



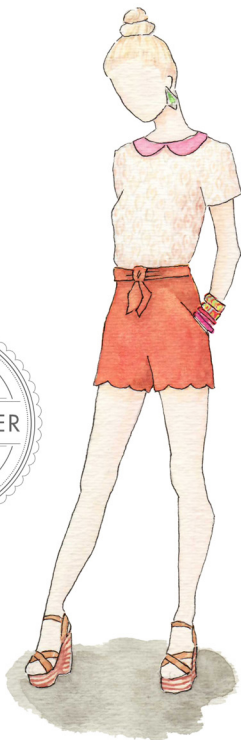
the

STYLE SENIOR GUIDE

*your guide to exceptional style and
flattering looks for your best portraits ever*



mishelle lamarrand
SENIOR PHOTOGRAPHER



DESCRIPTION	LOCATION PAIRINGS
<p><i>For the girl on the go, who is always in the know when it comes to the latest and greatest trends. She flaunts femininity with finishing touches like a scalloped hem, flirty lace top and a wistful peter pan collar. Her slicked back bun, high-waisted shorts and fun espadrilles work together to create a curvy yet classy silhouette.</i></p>	<ul style="list-style-type: none"> • Downtown Ann Arbor • Central Campus • Botanical Gardens • In & around Main Street • Kerrytown • North Campus
<p>COLOR PALETTE</p>	



DESCRIPTION	LOCATION PAIRINGS
<p><i>Comfort and range of motion are both key for this 'ready for anything' style. With breathable cotton, a light yet sturdy belt, stretch jeans and sporty footwear our guy is ready with a look that is both functional and fun.</i></p>	<ul style="list-style-type: none"> • Post Arena Area • Near the Big House • Central Campus • The Business School • Near Main Street • Kerrytown
<p>COLOR PALETTE</p> 	



DESCRIPTION	LOCATION PAIRINGS
<p><i>This bombshell is dressed to thrill, with dresses and heels invoking earlier fashion periods. She's rocking 40's couture mixed seamlessly with modern pieces, stylized hair, red lipstick and she loves period hats and jewelry.</i></p>	<ul style="list-style-type: none"> • The Graduate Hotel • UMMA • Central Campus • Kerrytown & farm market • Botanical Garden • Main Street
COLOR PALETTE	

TIPS *from the pros* FOR A SENIOR GIRL

1	<i>Don't forget to consider accessories, an important element of any shoot. Look for layers in jewelry also, including cute, meaningful chains, bracelets, rings and even hair feathers.</i>
2	<i>Consider starting your senior session with professional hair and makeup, either in the studio or at the local salon.</i>
3	<i>Layers done right are slimming and lead the eye away from problem areas. The right combination can totally dress a look up or calm it down and can give that extra pop of color a wardrobe needs.</i>
4	<i>Bring an elastic brown or black belt to cinch dresses and blouses that may look bulky on camera.</i>
5	<i>Dark denim flatters all shapes, sizes and photographs better than distressed or light washes.</i>
6	<i>Statement jewelry speaks volumes about personality. Go all out with a colorful necklace, chandelier earrings or stacked bangle bracelets. Worn with a simple tee or solid tank, the jewelry takes center stage.</i>
7	<i>Create complete, multi-piece looks. Consider purchasing a cropped blazer to throw over pieces you already own and cuff the sleeves for a fresh, tailored look that will keep its modern edge years after photos are taken.</i>
8	<i>Avoid mixing and matching bold patterns and crazy nail polish colors. Stick to one or two patterns per outfit and a nail polish color that won't draw too much attention to your hands.</i>
9	<i>Materials and texture of clothing is another factor to consider. Shiny clothes can be distracting, and clingy clothing is frustrating to continually adjust. Linens and cotton clothing tend to be easy to work with and photograph well.</i>
10	<i>Dress for the season. Clothing choices should match the season of your shoot. A short dress and flip flops will look out of place in the winter. Instead, try pairing that same dress with tall boots, tights and a long sweater.</i>



DESCRIPTION	LOCATION PAIRINGS
<p><i>Smart looks means rolled up slacks and a flash of panache in a jacket and playful bow tie. For a more casual look, pair a math humor tee with a cardigan and funky socks. Glasses work the look.</i></p>	<ul style="list-style-type: none"> • Near shops & cafes • Bus Depot • UMMA • North Campus • Matthei Conservatory • Main Street
COLOR PALETTE	





DESCRIPTION

This rough and tumble guy has taken a few cues from famous front men with worn tees, tight pants and messy long hair covered with a styled fedora. He's rocking bracelets reminiscent of his favorite musical pursuits, and sports sneakers so he's always ready to jump on his skateboard and ride.

COLOR PALETTE



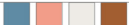
LOCATION PAIRINGS

- music shop
- urban alley
- freeway underpass
- skate park
- downtown area
- retro car lot



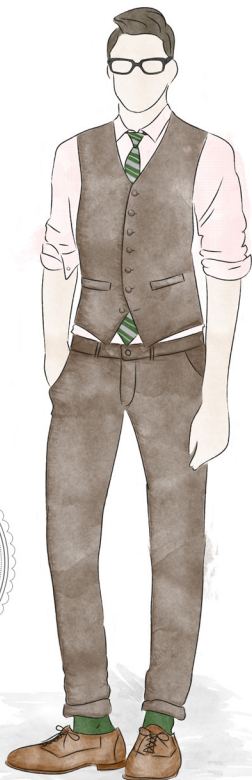
DESCRIPTION	LOCATION PAIRINGS
<p><i>This girl loves to accessorize, read fashion blogs, and show off her own unique style. Look for fun, layered looks and jewelry to add pops of color. Don't overly fuss about hair and makeup; the emphasis is on fashion.</i></p>	<ul style="list-style-type: none"> • Main Street • An urban alley • NEar shops & Cafes • In & around UMMA • Kerrytown • The Arb
COLOR PALETTE	




DESCRIPTION	LOCATION PAIRINGS
<p><i>Old is new again. Thrift shop findings paired with new, retro looking fashions, she mixes different eras for a coherent look. She's not afraid to tuck in her tops, throw on Maryjanes and work an 80's skirt.</i></p>	<ul style="list-style-type: none"> • <i>Shops & cafés</i> • <i>Kerrytown</i> • <i>Michigan Theatre District</i> • <i>Nickels Arcade</i> • <i>The Law Quad</i> • <i>North Campus</i>
<p>COLOR PALETTE</p> 	

TIPS *from the pros* FOR A SENIOR GUY

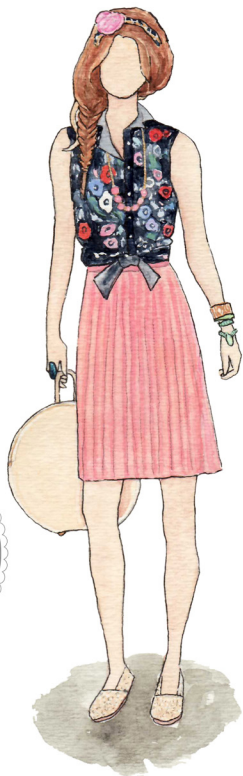
1	<i>Sports jerseys and equipment as well as other hobby related props (bikes, guitars, your skateboard) will add that personal flair to make you stand out, so don't be afraid to bring them along!</i>
2	<i>Dress to your own style but feel free to take it up a notch more than you normally would. This is your time to rock out your outfit. Add an extra layer, like a jacket or vest to give your outfit a more stylized look.</i>
3	<i>Make sure clothes are comfortable enough to move around in. Stay away from clothes that are binding or that restrict movement.</i>
4	<i>Sure, you aren't likely going to the stylist for an updo, but it's still important to go for a haircut 2 weeks before the shoot. It's enough time for the look to grow back slightly to a more comfortable length.</i>
5	<i>Jeans and t-shirts are the quintessential comfy for everyday wear but senior portraits are a time to shine. Take the extra time to pull a collection of outfits together that will really make those portraits special and unique as you are.</i>
6	<i>Spice up the outfit by stepping outside the box. Adding a pop of color to your outfit can really make a photo. Red shoes, a green jacket, a bright scarf or a fun watch are great ways to add color and interest.</i>
7	<i>Avoid head to toe baggy or head to toe loafs. Fitted clothing tends to translate better to photos and logos will distract from the main subject - you!</i>
8	<i>Your favorite band t-shirts, funky jackets, jerseys, fun sweatshirts and even hats make for great personality shots - the ones where you're just hanging out, being you.</i>
9	<i>It's always better to pack too many options than too few. Make sure everything is clean and wrinkle free.</i>
10	<i>Dress for the season. Clothing choices should match the season of your shoot. A t-shirt and flip flops will look out of place in the winter. Instead, try pairing the same shirt with a button-up, jeans and your favorite sneakers.</i>



DESCRIPTION	LOCATION PAIRINGS
<p><i>Clean cut and updated classic, this look entails some old-fashioned sensibility in 40's-styled trousers and vests, with a surprise of color in accessories, from a hip tie to a pop of color in his socks.</i></p>	<ul style="list-style-type: none"> • Near train station • Kerrytown • Law Quad • North Campus • Main Street • Business Schools
<p>COLOR PALETTE</p>	



DESCRIPTION	LOCATION PAIRINGS
<p><i>He's got the hat, whether he's wearing it or not, and a head for comfy, casual clothes that let him move. Look for soft layers, jeans and a polo, his jersey, or team paraphernalia, along with a classic haircut.</i></p>	<ul style="list-style-type: none"> • Near the Big House • Main Street • South Campus • Island Lake Park • Kahn Auditorium • Parking Structure
COLOR PALETTE	



DESCRIPTION

A sweet rural palette mixed with a touch of metropolitan style blends to create this balanced bohemian look. Our girl is ready for spring in a tangible way with a lovely floral print top, loose fishtail braid and coordinating pastel accessories.

COLOR PALETTE



LOCATION PAIRINGS

- The Arb
- Matthiae Botanical Garden
- A Farm Setting
- Kerrytown
- Main Street Cafes
- The Law Quad



DESCRIPTION

When it comes to this sassy lady, we're talking style head to toe. Crank up the volume on a simple heart shaped dress with metallic accessories, flirty spot color heels and carefully manicured waves for a look that's a guaranteed total knockout.

COLOR PALETTE



LOCATION PAIRINGS

- Michigan Theatre District
- Main Street
- Offbeat Urban Locations
- Near UMMA
- Graffiti Alley
- The Diag



DESCRIPTION	LOCATION PAIRINGS
<p><i>Sporting the country club vibe, look for muted, natural colors, layered shirts with collars, boat shoes and soft, leather accessories. He is not looking to achieve trends, his style is all about classic attire.</i></p>	<ul style="list-style-type: none"> • Near a boat marina • Law Quad • Nickels Arcade • Near the Huron River • Main Street • Kerrytown
<p>COLOR PALETTE</p> 	



DESCRIPTION

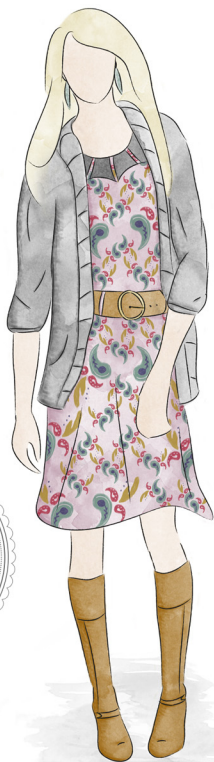
He's got that 'just stepped off the sailboat' style, with a clean nautical pattern and accessories. He keeps a crisp rolled cuff at the bottom of his pastel pants to showcase bare ankles and sturdy leather boat shoes.

COLOR PALETTE



LOCATION PAIRINGS

- A waterfront park
- A boat dock
- North Campus
- Urban setting
- An Alley
- Island Lake Park



DESCRIPTION

Feminine and understated, layers of natural fabrics are cinched with a cuter, rustic belt and capped with worn boots. Her country visage is offset by an urban fashion sense, with little accessory and soft, flowing hair.

COLOR PALETTE



LOCATION PAIRINGS

- *A farm setting*
- *The Arb*
- *Kerrytown & shops*
- *Botanical Gardens*
- *The Law Quad*
- *Central Campus*



DESCRIPTION

Sharp and sophisticated, this look mixes modern dress with the snazz and pizzazz of a clean-cut 1940's gentleman, then smoothes it all together with a slim tie and pops of color.

COLOR PALETTE



LOCATION PAIRINGS

- Michigan Theatre District
- Nickel's Arcade
- The Law Quad
- North Campus
- A Downtown Setting
- Kerrytown