

# MagraHearth Post and Beam Mounting Instructions Non-Combustible ASTM E-136\*

## Tools needed:

## Parts Needed:

1/8" Masonry Drill Bit	1 - SMP-54 Leg
1/4" Masonry Drill Bit	1 - SPP-54 Leg
Level	1 - LBB-78 Header
Cordless Drill	1 - 3"x3"x72" Mounting Bracket
Phillips Bit	4 - 2"x2"x48" Mounting Brackets
#2 Square drive bit	6 - 2 1/4" Self-Tapping Screws
1/4" Durock	18 - 2 1/4" Sharp Point Screws
Thinset (not premix bucket mastic)	8 - Trim Head Screws
Diamond Blade	Touch Up Kit
Circular Saw or Grinder (dry cut)	

Option: BFK17: (14 Pieces) - 12" x 5 1/2" Boards  
(3 Pieces) - 61 1/2" x 6 1/2" Boards

Option: Hearth Board Kit: (1 Piece) - 78" x 7 1/2" x 2" (+/-)  
(1 Piece) - 78" x 9 1/2" x 2" (+/-)

### **\*Note:**

- **Mantels are true replications of century's old & natural materials. There are inherently un-level aspects of these artifacts.**
- **All pieces can be cut to size – Use a diamond blade, wear safety glasses, and a respirator.**
- **Bottom of mantel should be a minimum of 6 inches above the glass trim of any unit 50K BTU's or lower. Bottom of mantel should be a minimum of 12 inches above the glass trim of any unit exceeding 50K BTU's.**

## INSTALLATION INSTRUCTIONS

### Step 1: Installing Hearth Boards

- Layout & orient the boards so they fit together in front of the unit.
- Thin set boards to underlayment making sure boards are level.
- Be sure to manage or isolate potential surface movement/cracking.
- Option: Grout space between hearth boards if desired (use colored tile grout)

### Step 2: Install Legs

**\*Note : The way the post and beam was designed was to have the mantel overhang the posts by 4" on each side that leaves 54 1/4" inside of posts for BFK.**

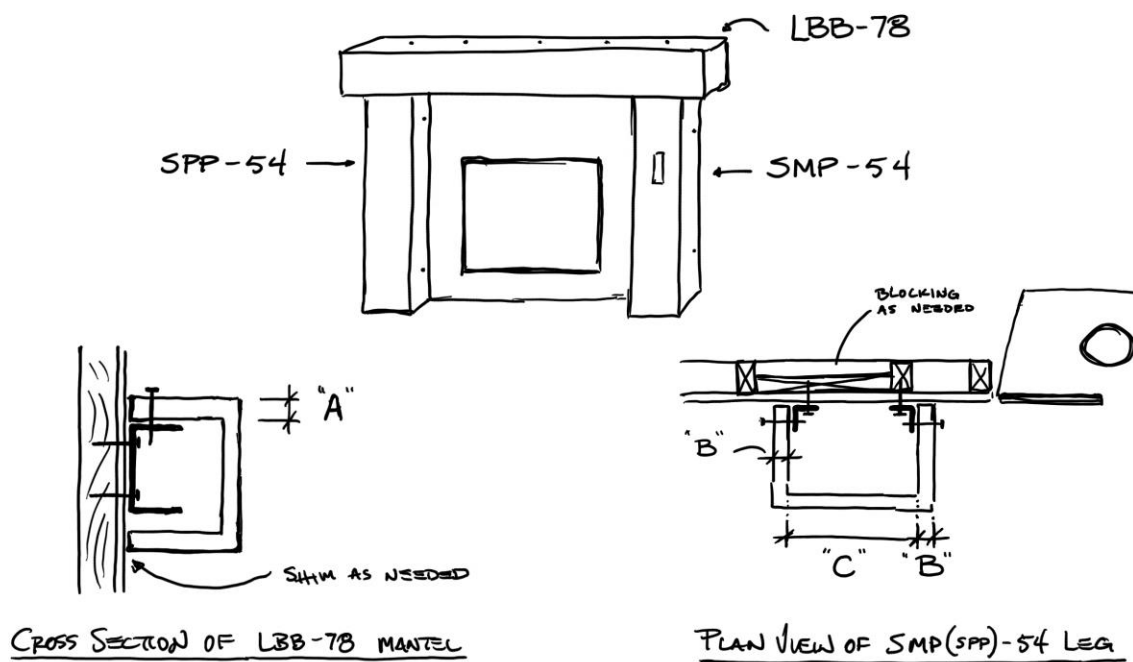
- When installing 2x2 mounting bracket to wall we recommend pre-drilling the bracket.
- Prepare legs by pre-drilling holes for trim head screws. Drill 1/8" holes all the way through at 6" from top and bottom, and 1 1/2" from back of leg. Use 1/4" drill bit to countersink screws 1/16" of an inch.
- Layout legs w/ overhang on mantel.
- 2x2 mounting brackets must be screwed to framing through wood or steel.
- Make sure there is backing for 2x2 mounting brackets. (open the wall & add wood or metal 2X if needed)
- Position legs on the hearth. Hold leg level, mark a line on the wall inside of the legs.
- Remove leg and put to the side.
- When installing 2x2 mounting bracket to wall we recommend pre-drilling the bracket.

- Take measurement "B", install inside 2x2 mounting bracket to wall with sharp point screws.
- Take measurement "C", install outside 2x2 mounting bracket to wall with sharp point screws.
- Test fit leg to make sure it fits over brackets and make sure it's level.
- Install legs with trim head screw.

### **Step 3: Install Mantel Shelf Beam**

- Carefully place mantel into position on top of legs.
- Mark a vertical line on wall where the 2 outside mounting holes are and mark horizontal line on wall where the top of the mantel meets vertical line. This will give you an average height for 3x3 mounting bracket.
- **Find and mark minimum 5 Studs.**
- If you cannot find 5 studs you must open wall and add wood or metal 2X.
- Take measurement "A" to install 3x3 mounting bracket under marks on wall.
- Start with 2 of the 10 sharp point screws and install mounting bracket.
- With 2 people test fit mantel making sure mantel is sitting on legs.
- When installing 3x3 mounting bracket to wall we recommend pre-drilling the bracket.
- Now remove mantel and install remaining 8 sharp tipped screws.
- With 2 people, lift mantel and place over mounting bracket. When centered and flush against wall, place a 2 1/4" inch self-drilling screw in the center pre-drilled hole on top of mantel. Screw through mounting bracket until screw head is flush or slightly countersunk. Maximum 1/16" countersink. DO NOT OVER TIGHTEN. Follow procedure by attaching remaining top 2 1/4" self-drilling screws in pre-drilled holes.
- **\*NOTE: If bottom of mantel is over the metal face of the unit self-drilling screws may be installed in lieu of mounting to studs directly over the unit.**

**\*Only fasten screws through the provided holes on top of mantel. Do not put any screws through the bottom of the mantel!**



#### **Step 4: Install Barn Filler Kit (BFK)**

- Cover hearth and inside of post or legs during installation of BFK to keep clean and scratch free.
- Add if necessary black metal 1" deep finish guide around final fireplace opening (Durock should be installed up to this lip).
- Install ¼" Durock over the whole inset area.
- When screwing Durock to fireplace take note of internal wires or gas lines. (Check Fireplace Manual)
- When cutting BFK use a saw with a diamond blade for masonry. (4½" grinder or circular saw) Be sure to wear a respirator and safety glasses, this is recommended.
- Install BFK boards with thinset.
- Dry cut and vacuum after for best results (wet saws create a slurry that gets into the texture and is much more difficult to clean up).
- Butt boards together without grout for an authentic look (be sure not to have excess thinset squeeze through, if so clean immediately).

#### **Step 5: Final Clean / Touch-up**

- Clean off dust etc. with soft brush and vacuum cleaner.
- Fill any chips, screw heads, and voids with dry mix putty (per instructions included)
- After everything is dry, lightly carve wood texture into patched area/s with a utility knife.
- Color patched area with the brown & dark dye that was provided.

#### **Final Note: for walls with steel studs or over metal above fireplace units**

- Use 16 gauge studs
- Or use 16 gauge 1' x 2" x 2" pieces of "L" brackets over studs screwed into front and sides centered on mounting brackets.
- Add metal studs to stiffen the non-combustible metal stand-off area above the fireplace opening as needed.

Your installation of the MagraHearth Post & Beam should now be complete. If you have any questions, you can contact us at [techsupport@magrahearth.com](mailto:techsupport@magrahearth.com).

\*Standard Test Method for Behavior of Materials in a Vertical Tube Furnace of 750 Degrees