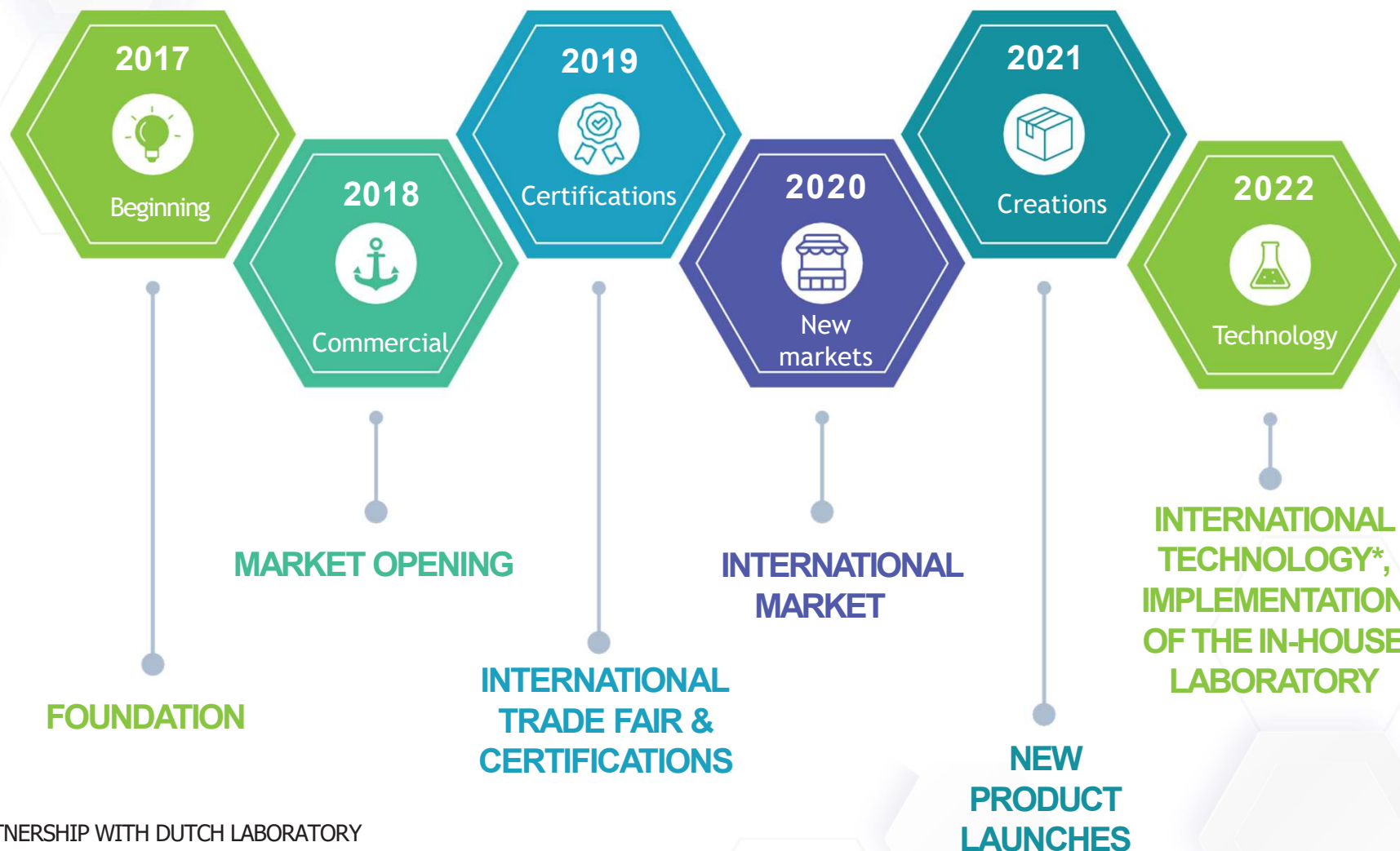


// PRESENTATION



REBOTEC BRASIL IS A 100% BRAZILIAN COMPANY, LOCATED IN LUIZ ALVES, SC. ITS PRODUCTS ARE MARKETING IN ALL 26 STATES OF THE COUNTRY, IN THE FEDERAL DISTRICT AND SOME COUNTRIES OUTSIDE BRAZIL. THE COMPANY STARTED SELLING PRODUCTS IN 2017 AND HAS SINCE GROWN EXPONENTIALLY.



*PARTNERSHIP WITH DUTCH LABORATORY

RESPECT FOR PEOPLE AND THE ENVIRONMENT.

**NON-TOXIC
PRODUCTS**



**CONSTANT
INVESTMENTS**

**HONESTY | ETHICS | TRANSPARENCY | RESILIENCE | TRUST
PERSISTENCE | WORK**

// HEAD OFFICE & SUBSIDIARIES

LUIZ ALVES HEADQUARTERS, SC
REBOTEC BRASIL LTDA

REBOTEC CAMAÇARI, BA
REBOTEC NORTHEAST

SUBSIDIARY XANXERÊ SC
JASON, SC

BRANCH IN SÃO PAULO, SP

BRANCH IN SÃO VICENTE, SP

PARAGUAY
CIUDAD DEL ESTE



TECHNOLOGY & INNOVATION

CORE BUSINESS: WATERPROOFING (EXPANDING MARKET IN THE WORLD)

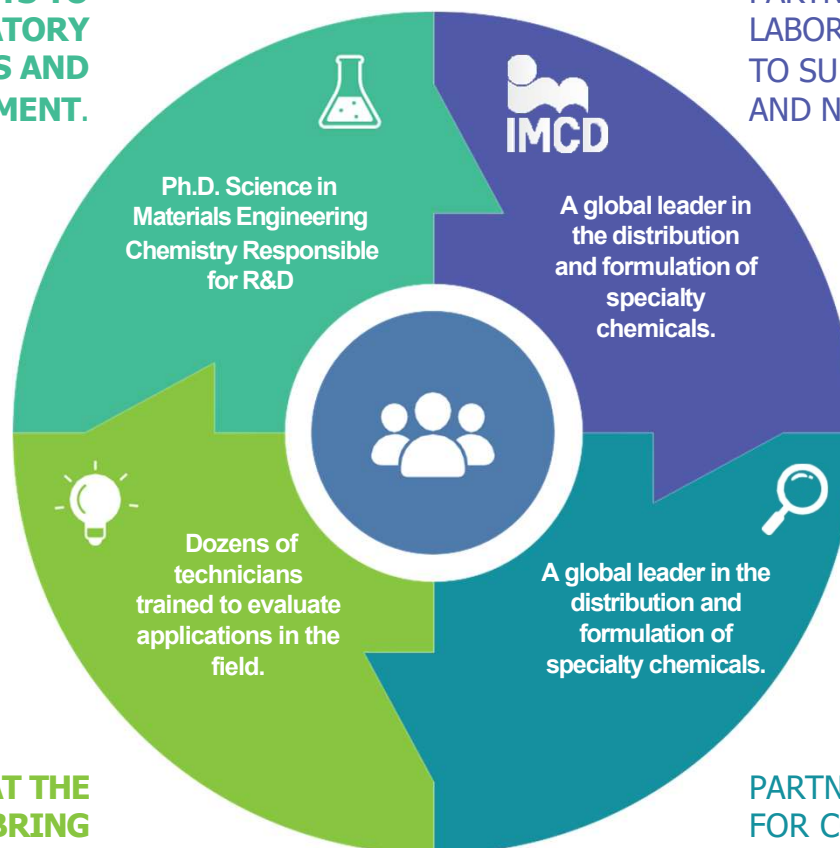
SOLVING HUMIDITY PROBLEMS IN CIVIL CONSTRUCTION. RELATIONSHIP AND AFTER-SALES

BRAND STRENGTH (UNCONVENTIONAL MEDIA AND CREATIVE EXPOSURE)

// TECHNOLOGICAL PARTNERSHIP AND TECHNICAL STAFF

**TECHNICAL SPECIALISTS TO
MANAGE THE LABORATORY
ANALYSIS AND
PRODUCT DEVELOPMENT.**

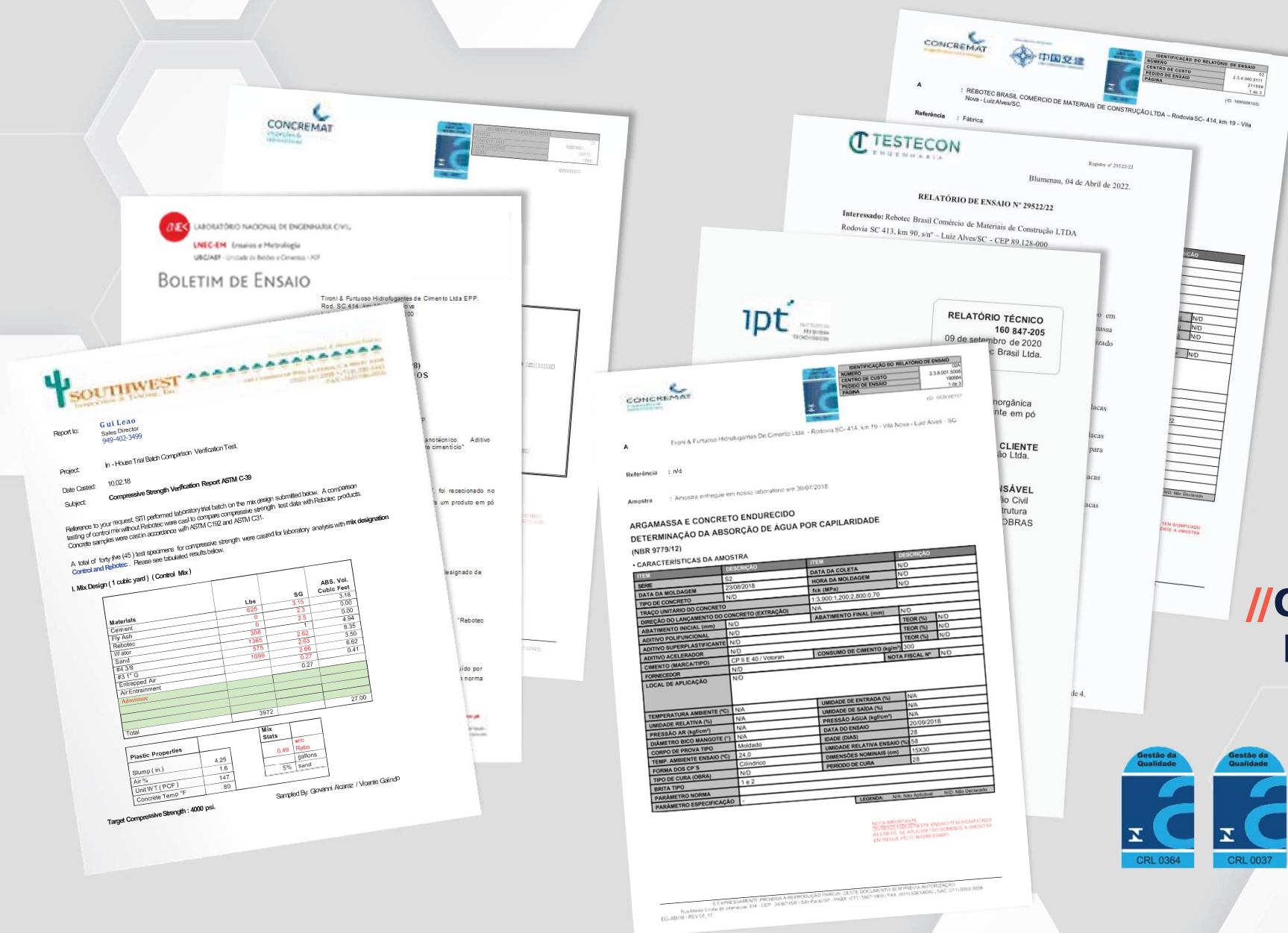
PARTNERSHIP WITH INTERNATIONAL
LABORATORY
TO SUPPORT THE DEVELOPMENT OF PRODUCTS
AND NEW TECHNOLOGIES.



**TECHNICAL TEAM PRESENT AT THE
WORK SITES TO BRING
FEEDBACK FROM THE
PRODUCTS.**

PARTNERSHIPS WITH TECHNICAL SCHOOLS
FOR COURSES AND DATA COLLECTION.
PARTNERSHIP WITH A GROUP OF
SPECIALISTS IN CONSTRUCTION FINISHING
(#SOUCUNHEIRO).

// TECHNICAL REPORT / TEST REPORT / CERTIFICATIONS / COMPLIANCE TESTING



**// CERTIFIED
LABORATORIES**

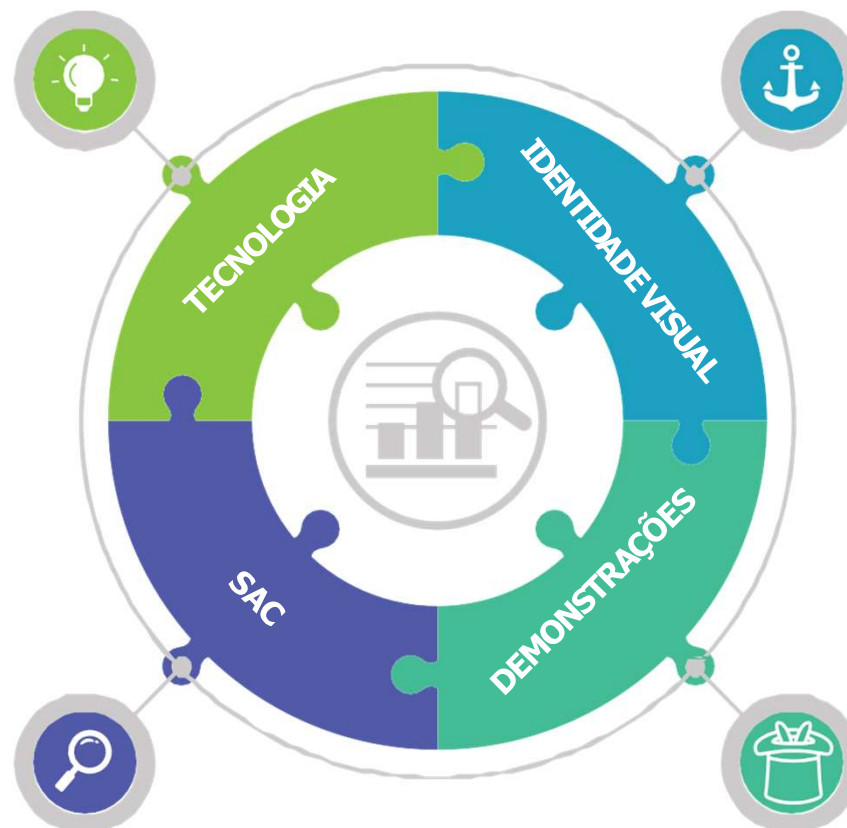


// BRAND POSITIONING

IN JUST A FEW YEARS, REBOTEC HAS BECOME A REFERENCE IN WATERPROOFING PRODUCTS IN THE DOMESTIC MARKET. WITH MILLIONS OF VIEWS ON SOCIAL MEDIA AND THOUSANDS OF FOLLOWERS.

PRODUCTS WITH EXCLUSIVE TECHNOLOGY

STRONG INVESTMENT IN
TECHNOLOGY FOR
EXCLUSIVE LAUNCHES
IN THE DOMESTIC
MARKET.



VISUAL IDENTITY

REDESIGN OF THE VISUAL IDENTITY; #
NEW PACKAGING LINE;
WEBSITE;
COMMUNICATION MATERIALS; # POS
MATERIAL;
STRONG PRESENCE IN SOCIAL MEDIA; #
PRODUCT LAUNCHES
WITH CLEAR POSITIONING;
PRODUCT APPLICATION TUTORIAL
VIDEOS.

SIMPLE AND VISUAL PRESENTATIONS AT FAIRS AND EVENTS

LIVE & ONLINE & ON SCREENS
TRAININGS

CUSTOMER SERVICE AND AFTER-SALES TECHNICIAN

100% SATISFACTION
POLICY

// MEDIA PRESENCE

IN JUST A FEW YEARS, REBOTEC HAS BECOME A REFERENCE IN WATERPROOFING PRODUCTS IN THE DOMESTIC MARKET. WE HAVE CONTRACTS WITH THE MAIN DIGITAL INFLUENCERS IN THE CONSTRUCTION INDUSTRY IN THE BRAZILIAN MARKET. IT ALSO HAS A PRESENCE IN TV AND RADIO MEDIA REGIONALLY. PARTICIPATION IN NATIONAL AND INTERNATIONAL FAIRS.



// PARTICIPATION IN TRADE FAIRS & TRACKING MAGAZINES

1

PARAGUAY
INTERNATIONAL
FAIR

2

BATIMAT
FRANCE
INTERNATIONAL
FAIR

CONSTRUC
TECNIA

BATIMAT

3

CIVIL
CONSTRUCTI
ON FAIR IN
SOUTH OF
BRAZIL

4

CIVIL
CONSTRUCTI
ON AND
ARCHITECTUR
E FAIR IN SP

5

INTERNATIONAL
TRADE FAIR FOR
CONSTRUCTION
IN PE

Construsul

FEICON



6

ANAMACO
MAGAZINE

anamaco





// ALL RANGE OF PRODUCTS



REBOTEC WATERPROOFING

4kg (8.8lb) for each 50kg (110lb) of
cement / 8% of cement weight

Cement-based mineral product that
transforms cement and aggregates into
water-repellent (impermeable)



REBOTEK CONCRETO

Beams, foundations, ready-mix, prestressed, reinforced and projected concrete.
4kg (8.8lb) for each 50kg (110lb) of cement / 4% of cement weight

REBOTEK CONCRETO is a waterproofing aggregate specially developed for addition to the concrete trace at the time of its production.



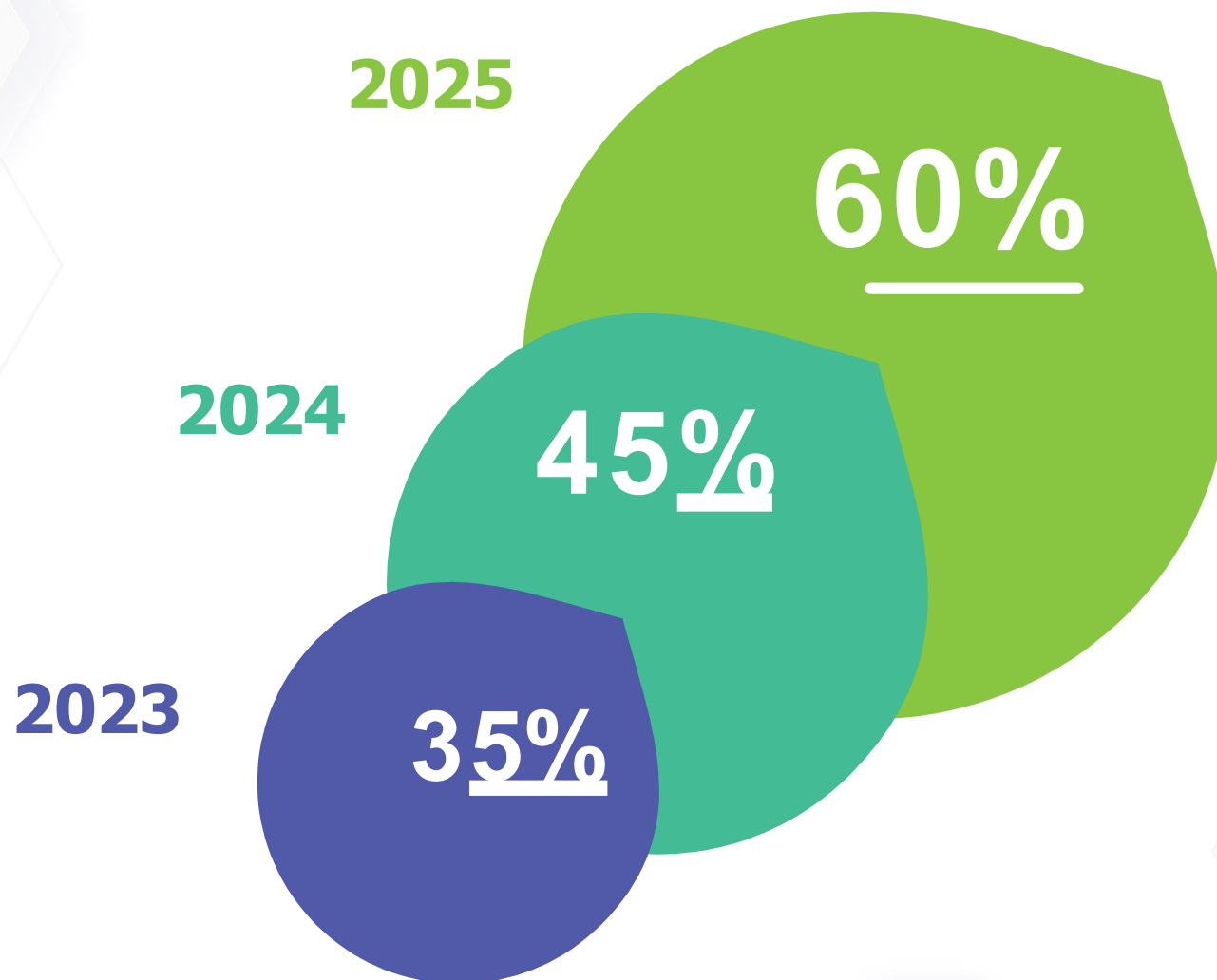
REBOTECFLEX POOL AND TANK

Waterproof cementitious liquid membrane

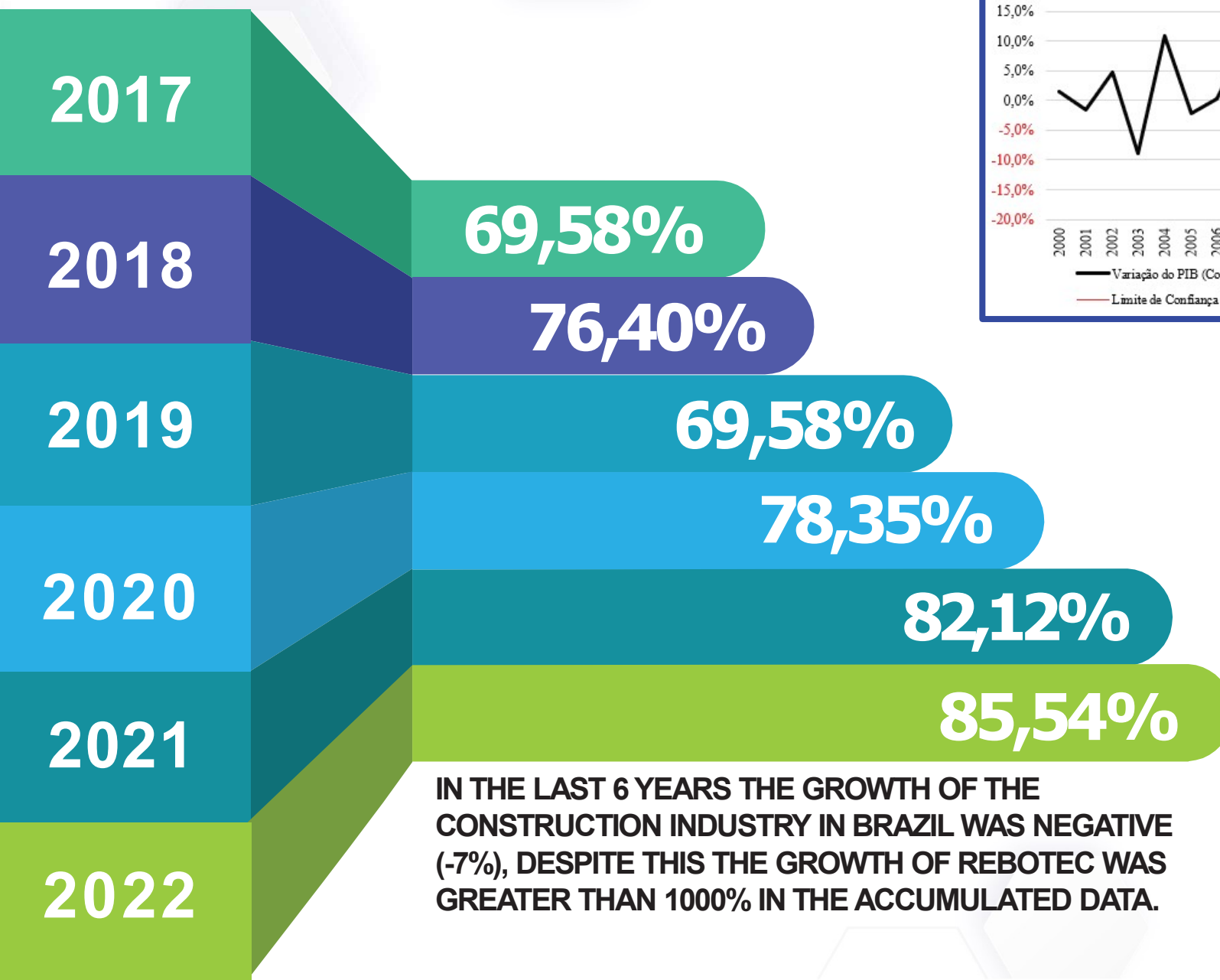


REBOTECFLEX is a two-component waterproof cementitious liquid membrane based on acrylic polymers with high adhesion power. It is 100% waterproof, flexible, and has elastic properties that provide greater ability to remain intact in areas subject to cracks, fissures, rising damp, and negative and positive pressure dampness. Very effective against permanent exposure to the sun, the sea and the weather in areas without transit

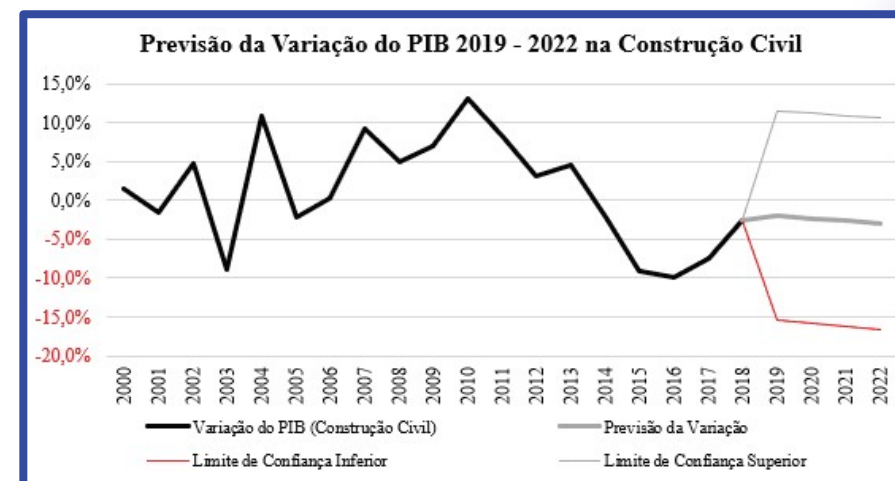
// GROWTH PROJECTION FOR THE NEXT 3 YEARS



// TURNOVER: YEAR-OVER-YEAR GROWTH



IN THE LAST 6 YEARS THE GROWTH OF THE CONSTRUCTION INDUSTRY IN BRAZIL WAS NEGATIVE (-7%), DESPITE THIS THE GROWTH OF REBOTEC WAS GREATER THAN 1000% IN THE ACCUMULATED DATA.



THANK YOU!

