

Smarter Science. Stronger Skin.

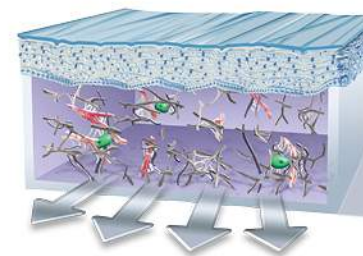
When your skin's ability to recycle and repair collagen and elastin begins to slow, ALASTIN Skincare® offers an innovative collection of specially formulated and clinically proven products to help restart the process. Whether the goal is to create an essential daily skincare

regimen or to enhance the results of some of the most popular skincare procedures, ALASTIN Skincare offers cruelty-, paraben- and gluten-free solutions that promote fortified, healthy skin so patients can look refreshed and are free to feel fabulous, unfiltered and confident.



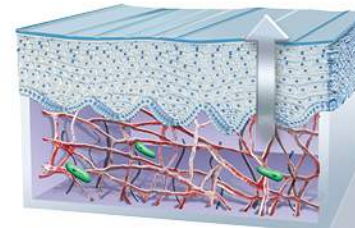
The TriHex Technology Difference

ALASTIN Skincare rejuvenating products are powered by a patented blend of active peptides and botanicals that elegantly support your skin's natural life cycle – promoting the benefits of recycling, rebuilding and replenishing the skin matrix in order to maintain a healthy glow and youthful appearance.



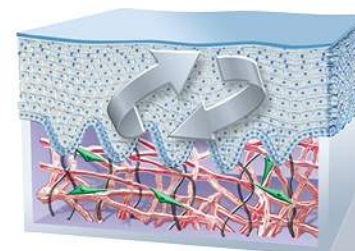
REMOVE

TriHex Technology supports the REMOVAL of aged, damaged elastin and collagen to help kick-start the skin's natural rejuvenation process.



REBUILD

After creating an optimal skin environment, TriHex Technology helps the skin REBUILD new, healthy elastin and collagen to provide visible changes at the surface level.



REPLENISH

With daily use, TriHex Technology helps REPLENISH new, healthy elastin and collagen as well as continue clearing damaged fragments in order to maintain healthy skin from the inside out.



Our Products



Regenerating Skin Nectar

WITH TRIHEX TECHNOLOGY

Regenerating Skin Nectar with TriHex Technology is designed to support and strengthen the skin and can enhance procedure outcomes when used before skin-rejuvenating procedures to prepare the skin, and afterward to support faster recovery and optimal results.

Benefits:

- Prepares skin prior to a procedure to optimize results
- Calms post-procedure skin and helps reduce downtime
- Helps preserve your procedure results
- Works with the skin to remove damaged elastin and collagen, and supports the skin's natural ability to replenish elastin and collagen
- Anhydrous, preservative-free, bacteriostatic formulation

Key Ingredient	Function
TriHex Technology	Elastin and collagen support
Naringenin with Panthenyl Triacetate	Soothing antioxidant
Arnica Montana Extract	Calming
Phytoene & Phytofluene	Supports pigmentation correction and protects the skin from further damage
Application: 1-2 pumps directly to treated area or as directed by your skincare specialist. AM/PM	



Restorative Skin Complex

WITH TRIHEX TECHNOLOGY

Restorative Skin Complex with TriHex Technology should be used every day to strengthen skin and combat the appearance of visible signs of aging on the face.

Benefits:

- Helps restore volume to thinning skin
- Improves appearance of fine lines and wrinkles
- Helps even skin tone
- Works with the skin to remove damaged elastin and collagen, and supports the skin's natural ability to replenish elastin and collagen

Key Ingredient	Function
TriHex Technology	Elastin and collagen support
Phosphatidylserine	Collagen maintenance
Palmitoyl Dipeptide-5	Skin structure support
Acetyl Hexapeptide-38 & L-Ornithine	Helps restore volume to thinning skin
Phytoene, Phytolfluene & Niacinamide	Supports pigmentation correction and protects the skin from further damage
Application: 1-2 pumps to the face. AM/PM	



Restorative Eye Treatment

WITH TRIHEX TECHNOLOGY

Restorative Eye Treatment with TriHex Technology should be used daily to reduce the appearance of puffiness, dark circles and fine lines and wrinkles around the eyes.

Benefits:

- Reduces the appearance of dark circles
- Helps smooth fine lines and wrinkles
- Diminishes puffiness
- Works with the skin to remove damaged elastin and collagen, and supports the skin's natural ability to replenish elastin and collagen

Key Ingredient	Function
TriHex Technology	Elastin and collagen support
Mimosa Tree Extract & Darutoside	Supports skin firmness
Green Tea & Oak Leaf Tea Extracts	Helps reduce the appearance of dark circles
Niacinamide, Tetrapeptide-30	Brightening and skin tone improvement
Cross-polymer	Light-diffusing benefits

Application: 1 pump to the area around the eyes (can be placed directly on the upper eyelid). AM/PM





Ultra Nourishing Moisturizer

WITH TRIHEX TECHNOLOGY

Use Ultra Nourishing Moisturizer with TriHex Technology to help hydrate and soothe skin in order to provide support against environmental damage.

Benefits:

- Works with the skin to remove damaged elastin and collagen, and supports the skin's natural ability to replenish elastin and collagen
- Calms, nourishes and helps hydrate the skin
- Fragrance- and oil-free formulation
- Intended for daily use and is safe to use post-procedure

Key Ingredient	Function
TriHex Technology	Elastin and collagen support
Oat Kernel Extract	Calming
Linoleic Acid, Phospholipids	Skin barrier support
Caprylic/Capric Triglyceride	Emollience and moisture delivery

Application: Apply a pea-size amount to the face. AM/PM



Restorative Neck Complex

WITH TRIHEX TECHNOLOGY

Restorative Neck Complex with TriHex Technology should be used daily to help tighten skin and reduce the appearance of fine lines and wrinkles on the neck and décolleté.

Benefits:

- Improves the appearance of crepey skin, as well as fine lines and wrinkles on the neck and décolleté
- Minimizes redness and discoloration
- Works with the skin to remove damaged elastin and collagen, and supports the skin's natural ability to replenish elastin and collagen

Key Ingredient	Function
TriHex Technology	Elastin and collagen support
Acetyl Tetrapeptide-2	Elasticity and skin texture improvement
Plantain Leaf	Collagen support
Phytoene, Phytofluene & Niacinamide	Supports pigmentation correction and protects the skin from further damage
Flax Seed Extract	Hydration and softening of the skin
Dill Extract	Elasticity and skin texture improvement

Application: 1 pump to the neck and décolleté. AM/PM



TransFORM Body Treatment

WITH TRIHEX TECHNOLOGY

TransFORM Body Treatment with TriHex Technology is specially designed to use after body-sculpting procedures. This unique formulation can help accelerate the body's natural removal of broken-down fat cells post-procedure to accelerate and enhance visible results. It also supports the skin's natural ability to produce elastin and collagen for firmer, smoother skin, even when used alone as a daily body treatment.

Benefits:

- Accelerates and enhances body-sculpting procedure results
- Improves the appearance of skin texture, laxity and crepiness post-procedure or as a daily body treatment
- Works with the skin to remove damaged elastin and collagen, and supports the skin's natural ability to replenish elastin and collagen

Key Ingredient	Function
TriHex Technology	Elastin and collagen support
Hexapeptide-11	Helps accelerate the clearance of broken-down fat cells post-procedure
Acetyl Tetrapeptide-2 & Dill Extract	Elasticity and skin texture improvement
Linseed Extract, Plantain Leaf	Hydration, skin crepiness and texture improvement

Application: 2-3 pumps to desired or treated areas on the body.
AM/PM





Gentle Cleanser

Gentle Cleanser is self-foaming and removes impurities without drying or irritating the skin.

Benefits:

- Thoroughly removes environmental pollutants and makeup
- Self-foaming and sulfate-free
- Contains calming antioxidants
- Intended for daily use and is safe to use post-procedure

Key Ingredient	Function
Provitamin B5	Softening and moisturizing
Oat Beta Glucan	Anti-irritant
Chamomile Extract	Antioxidant with calming properties
Oat Kernel Extract	Calming

Application: Wet face with warm water. Using a nickel-size amount, lightly massage onto face and then rinse thoroughly. AM/PM



Renewal Retinols .25 + .5

Renewal Retinol should be used nightly to help smooth skin texture, improve skin tone and reduce the appearance of fine lines and wrinkles.

Benefits:

- Diminishes the appearance of fine lines and wrinkles
- Smooths skin texture and helps improve skin tone
- Potent hydrators protect against skin dehydration
- Anti-irritants and antioxidants calm sensitive skin

Key Ingredient	Function
Retinol encapsulated in a solid lipid	Improved delivery and collagen support
Oat Extract	Calming
Hydroxymethoxyphenyl Decanone	Potent antioxidant that supports hydration
Silver Mushroom	Hydration and skin texture improvement
Co-enzyme Q-10	Retinol-stabilizing antioxidant
Application: 1 pump to the face each evening. PM	



Soothe + Protect Recovery Balm

Soothe + Protect Recovery Balm moisturizes, soothes and strengthens skin following skin-rejuvenating procedures.

Benefits:

- Softens, calms and moisturizes skin
- Supports renewal of post-procedure skin
- Helps to restore the barrier function of the skin
- Helps hydrate dry and compromised skin

Key Ingredient	Function
Physalis Angulata Extract	Calming
Chamomile Extract	Antioxidant with calming properties
Shea Butter Triterpenes	Soothes post-procedure skin

Application: Use as directed by your skincare specialist for post-procedure care.



HydraTint Pro Mineral

BROAD SPECTRUM SPF 36

Use HydraTint Pro Mineral Broad Spectrum SPF 36 daily to protect skin from harmful UVA/UVB rays, shield against environmental pollution and provide a tint with a soft glow for perfect-looking skin.

Benefits:

- All-mineral, lightweight formulation
- Broad Spectrum UVA/UVB sun protection SPF 36
- Environmental pollution protection
- Beautiful tint provides a soft glow for perfect-looking skin
- Reef-friendly formulation

Key Ingredient	Function
Titanium Dioxide 8.9%, Zinc Oxide 3.4%	Broad Spectrum UVA/UVB sun protection
Phytoene & Phytofluene	Supports pigmentation correction and protects the skin from further damage
Thermus Thermophilus Ferment	Counteracting IR-generated free radicals
Asteriscus Graveolens Extract	Prevention of air pollution-induced oxidative stress

Application: Apply generously alone or under makeup before sun exposure, as needed. AM

Product
Regimens



Pre- and Post-Procedure Care Regimen

Using a regimen of ALASTIN Skincare products specifically formulated for use on skin before and after invasive and non-invasive procedures has been clinically proven to help reduce recovery time, enhance results and preserve a more youthful look for a longer amount of time. For a comprehensive procedure care regimen, we recommend the following products.

- Gentle Cleanser
- Regenerating Skin Nectar with TriHex Technology
- Ultra Nourishing Moisturizer with TriHex Technology
- Soothe + Protect Recovery Balm
- TransFORM Body Treatment with TriHex Technology

Ask your skincare specialist about customizing the right regimen for your treatment plan today.





TriHex Transition Duo

TriHex Transition Duo is designed for patients undergoing skin-rejuvenating procedures to prepare the skin prior to a procedure, support recovery and results post-procedure, and ensure a smooth transition to daily skincare after recovery to help maintain the benefits of the procedure.

The TriHex Transition Duo leverages ALASTIN's TriHex Technology, which supports skin's natural life cycle – promoting the benefits of recycling, rebuilding and replenishing the skin matrix in order to maintain a healthy glow and youthful appearance.

Start with Procedure Enhancement:

- **Regenerating Skin Nectar with TriHex Technology:**

Use Regenerating Skin Nectar before and after skin-rejuvenating procedures for faster recovery and optimal results.

Transition to Daily Maintenance:

- **Restorative Skin Complex with TriHex Technology:**

Use Restorative Skin Complex every day to strengthen skin and combat the appearance of visible signs of aging on the face.

Application: Use as directed by your skincare specialist.

Ask your skincare specialist about the right regimen for your treatment plan today.



Daily Skincare Regimen

ALASTIN Skincare offers a range of products that can be used independently or as an entire system to help combat the appearance of visible signs of aging. Use the following products as part of a daily skincare regimen.

- Gentle Cleanser
- Restorative Skin Complex with TriHex Technology
- Restorative Eye Treatment with TriHex Technology
- Ultra Nourishing Moisturizer with TriHex Technology
- Restorative Neck Complex with TriHex Technology
- TransFORM Body Treatment with TriHex Technology
- HydraTint Pro Mineral Broad Spectrum SPF 36
- Renewal Retinol .25 + .5

During your appointment, ask your skincare specialist about personalizing an ALASTIN Skincare daily care regimen.

Ask us about
ALASTIN Skincare
TODAY!

