



# Sel vame

HOTEL & RESIDENCES

TULUM

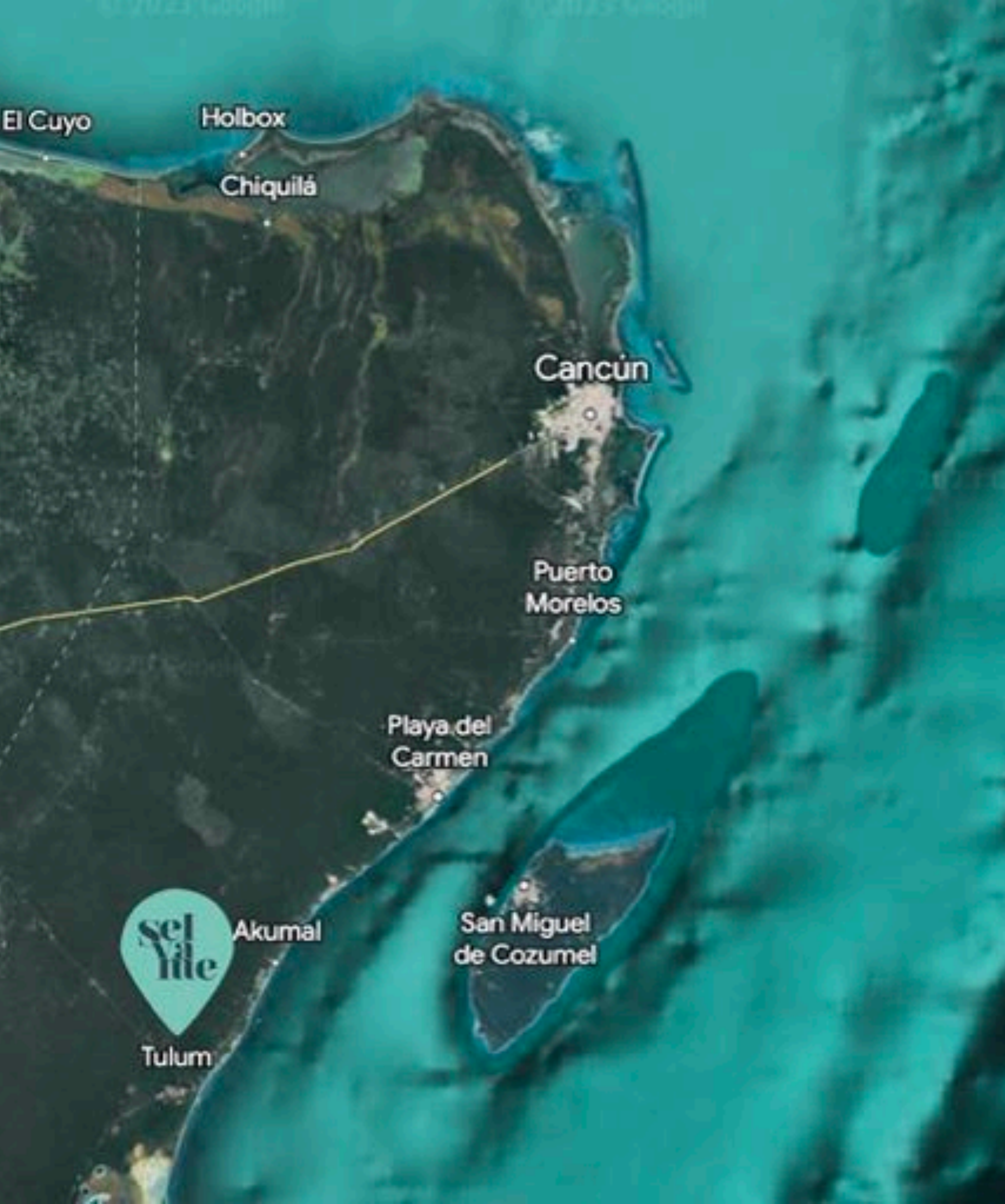


Discover a rejuvenating and relaxing lifestyle in a **serene** and breathtaking environment. **Selva Me TULUM** offers an exclusive retreat with meticulously designed apartments and condos to immerse yourself in the **natural beauty of Tulum**. Guest comfort, relaxation, and happiness are a priority and a **sanctuary** is created to cater to their needs and well-being. Whether for a short or long vacation, this place guarantees a peaceful escape from monotony.

Experience the stunning natural beauty of TULUM, one of the most important tourist destinations in Latin America. This exotic Caribbean coastal city is renowned for its beautiful white sandy beaches, crystal-clear waters, and lush tropical jungles. Known for its vibrant outdoor dining, bohemian culture, and relaxed atmosphere, Tulum is the perfect destination for those seeking an escape from their daily routine and to connect with nature.

Be part of this wonderful community with our new real estate development that offers the best of TULUM'S lifestyle.





“

LOCATED IN ONE OF THE MOST  
IMPORTANT SPOTS IN LATIN  
AMERICA





Tulum Hotel Zone 10 MIN

Zona Arqueológica de Tulum 13 MIN

Tulum International Airport 20 MIN

Xel-Ha 25 MIN

Xcaret 35 MIN

Fifth Avenue,  
PLAYA DEL CARMEN 1 HR

Cozumel 2 HR

Valladolid 1HR 50 MIN

Cancún International Airport 1 HR 45 MIN

Cancún Hotel Zone 2 HRS

Chichén Itzá, Yucatán 2 HRS 10 MIN

Beach Access 10 MIN

WHERE *Luxury* CONVERGES WITH *Nature*





# SERVICES



BIKE TOUR  
TO THE BEACH



BIKE TOUR  
TO AN ANTIQUE BOOK  
STORE



BIKE TOUR  
TO CENTER



BIKE TOUR  
TO ITALIAN HOTEL ZONE



HOTEL  
RESERVATIONS



RESTAURANT  
RESERVATIONS



TRANSPORTATION  
TO ANCIENT TOWNS  
IN THE YULIN AREA



TRANSPORTATION  
TO ICE CREAM WATER  
PARK

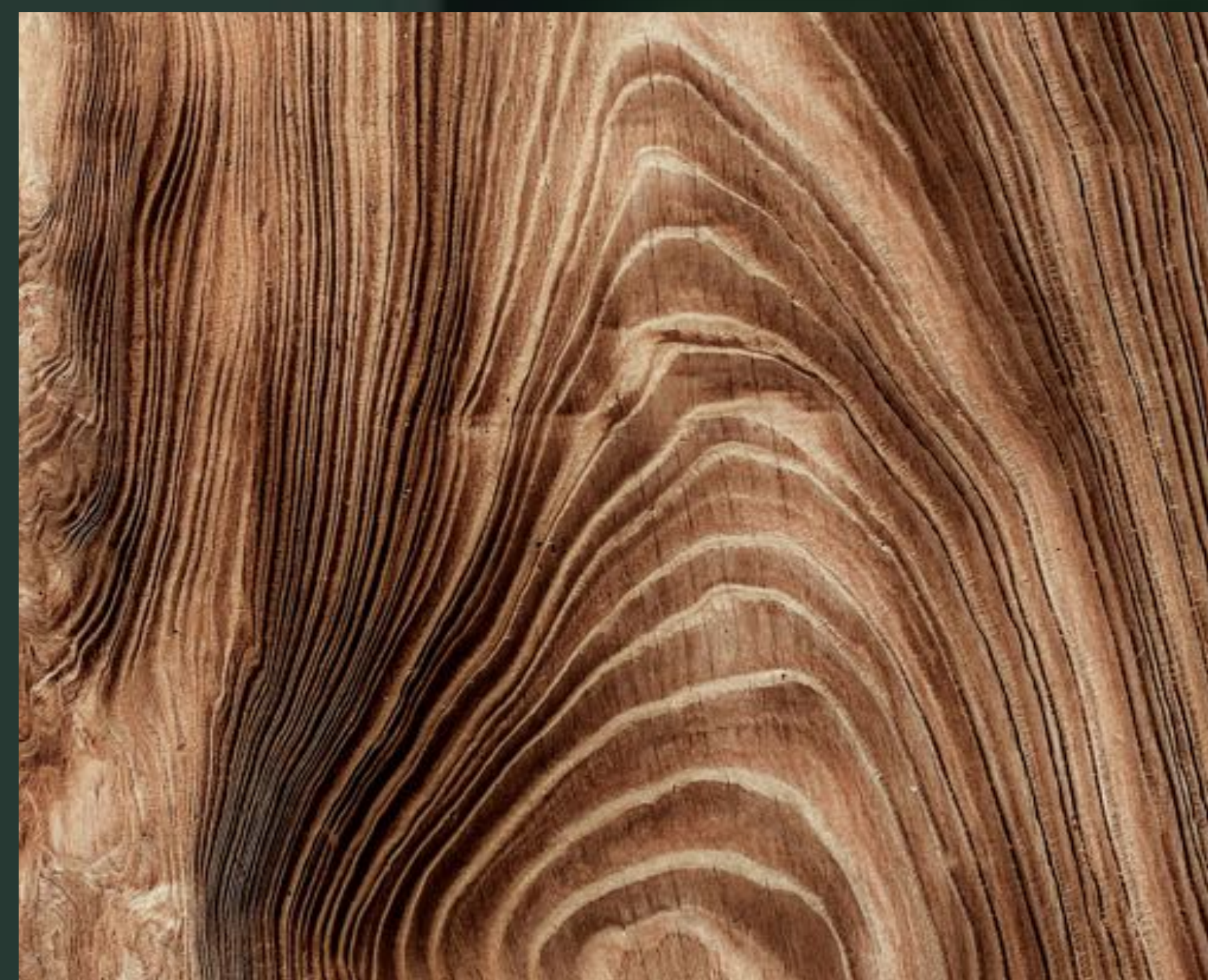


*Life* IS LIKE RIDING A *Bike*



## SELVA ME TULUM

Is a boutique hotel-condominium that pays homage to the Mayan jungle by using natural elements such as limestone, Chukum, jives, parota, and precious woods in its architectural spaces. Its exclusive design includes natural lighting and spacious outdoor terraces with artisanal tubs, relaxation areas, spas, rooftop, gourmet restaurant, gym, and coworking space, all designed to offer a **healthy lifestyle.**



"All images shown are for promotional and informational purposes only. The project is subject to change without prior notice."

An aerial photograph of a tropical coastline. The left side shows clear, turquoise water with white waves washing onto a narrow, white sandy beach. To the right of the beach is a thick, lush green forest of palm trees and other tropical vegetation. The sky is bright blue with scattered white clouds. The overall scene is idyllic and scenic.

*Selva me;* BETWEEN  
THE *Sea* AND THE *Beach*



OUR  
*Residences*



# LUXURY RESIDENCES

ORQUÍDEA · 1 BEDROOM

- 👉 HOTEL SUITE
- 👉 1 BEDROOM
- 👉 DRESSING ROOM
- 👉 ARTISTIC TUB  
Hand made
- 👉 LIVING ROOM
- 👉 DINING ROOM
- 👉 1 BATHROOM
- 👉 TERRACE

## DIMENSIONS

Apartment 42.53 m<sup>2</sup> | Terrace 7 m<sup>2</sup>

**TOTAL 49.53 m<sup>2</sup>**

# LUXURY RESIDENCES

## MANGLAR • 2 BEDROOMS

1 LOCK-OFF

- 👉 EQUIPPED KITCHEN
- 👉 2 BEDROOMS
- 👉 ARTISTIC TUB  
Hecha a mano
- 👉 LIVING ROOM
- 👉 DINING ROOM
- 👉 BREAKFAST AREA
- 👉 LAUNDRY AREA
- 👉 2 BATHROOMS
- 👉 TERRACE

### DIMENSIONS

Underground parking space 13 m<sup>2</sup>  
Apartment 105 m<sup>2</sup> | Terrace 12.6 m<sup>2</sup>

**TOTAL 130.48 m<sup>2</sup>**



# LUXURY RESIDENCES

PALMA CHIT • 3 BEDROOMS  
1 LOCK-OFF

- 3 BEDROOMS
- DRESSING ROOM
- ARTISTIC TUB  
Hand made
- EQUIPPED KITCHEN
- LIVING ROOM
- DINING ROOM
- 3 BATHROOMS
- TERRACE

## DIMENSIONS

Underground parking space 13 m<sup>2</sup>  
Apartment 116.30 m<sup>2</sup> | Terrace 12.60 m<sup>2</sup>

**TOTAL 141.90 m<sup>2</sup>**



# LUXURY RESIDENCES

CEIBA • 3 RECÁMARAS  
1 LOCK-OFF

- ☞ COCINA EQUIPADA
- ☞ 3 RECÁMARAS
- ☞ TINA ARTÍSTICA  
Hand made
- ☞ SALA
- ☞ DESAYUNADOR
- ☞ COMEDOR
- ☞ ÁREA DE LAVADO
- ☞ 2 BAÑOS  
1 sanitario
- ☞ TERRAZA

## DIMENSIONES

Espacio de estacionamiento subterráneo 13 m<sup>2</sup>

Departamento 146.3m<sup>2</sup> | Terraza 19 m<sup>2</sup>

**TOTAL 178.3 m<sup>2</sup>**





# Sel vame

HOTEL & RESIDENCES

TULUM



+52 (1) 998 - 767 - 8831

melissa@selvame.mx

WWW.SELVAME.MX