



EXPECTED MINE LIFE

The project will be a newly developed open-cut mining operation with an onsite processing facility and an initial mine life of 25 years.

25
YEARS

COMMUNITY FOCUS

Recognising the importance of both the traditional owners of the area and the community, Diatreme's approach is rooted in consultation and collaboration. By valuing open dialogue and partnership, we aim to create a project that not only respects the deep-rooted heritage of the area but also brings shared benefits to the entire Hope Vale community.

3-5
MILLION

TONNES PER ANNUM

The project's scoping study indicates a initial target production rate of 3 million tonnes per annum (mtpa) increasing to 5 mtpa after the first 2 years of operation.

SITE STRUCTURE

- ✓ CAMP & ADMINISTRATION
- ✓ MINE EXTRACTION SITE
- ✓ STOCKPILE AREA
- ✓ SITE ACCESS ROADS
- ✓ INFRASTRUCTURE

JOBS CREATED

The project stands to create upwards of 120 jobs for Hope Vale and surrounding communities.

120+
JOBS

CULTURAL HERITAGE

Diatreme is dedicated to preserving the rich cultural heritage of the Hope Vale area. We'll be working closely with affected local clans to identify cultural heritage values and develop cultural heritage management plans. These plans ensure that the traditions and history of the land are respected and protected. Our commitment is to involve and consult the community every step of the way, ensuring that our operations align with the values and interests of the Hope Vale community. We aim to build a project that benefits everyone while honouring the area's deep-rooted heritage.

10
BUSINESS

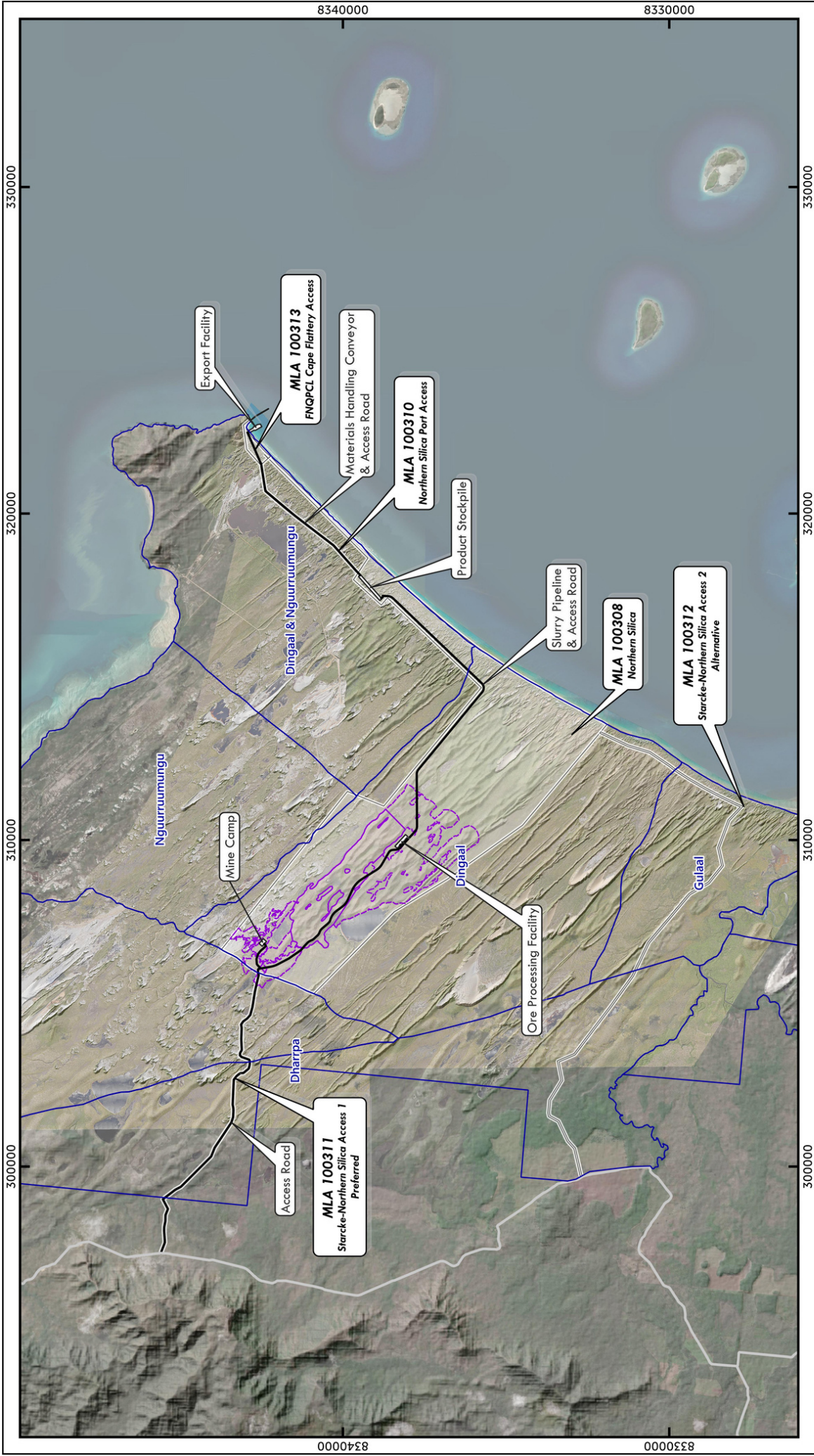
OPPORTUNITIES

Estimated 10 local business development opportunities to directly support the mine in areas such as: nursery, training, catering & camp services, road maintenance and more.

SOLAR PANELS

Every 1 million tonnes of our high purity silica produced could be used in the manufacture of approximately 103 million solar panels.

103
MILLION
PANELS



DIATREME Resources

Northern Silica Project
Development Overview

Document: DRX_NSP_CP_2015	Scale: 1:150000
Version: 2.0	CRS: GDA2020 / MGA Zone 55
Author: Frazer Watson	Date Created: 15/02/2024
Approved: Robyn Bartlett	Date Approved: 15/02/2024

	Main_Road		Mineral Resource Estimate: Inferred Category
	Materials Handling Conveyor		Mineral Resource Estimate: Indicated Category
	Mine Infrastructure		Clan Boundary (QC1997/001)
			Mining Lease Application: Northern Silica Pty Ltd (Diatreme)