



THE MAINSTREAM

SUNDAYS

WORSHIP IN PERSON
9:30 & 11:00 AM

WORSHIP BY LIVESTREAM
11:00 AM



Joy Singers

FOURTH QUARTER 2024



2025 Planning



Fall Festival



*From the Heart of
Rev. LeAnn Hodges*

CLINGING TO HOPE

Dear GPC Members and Friends,

This fall is yet again a season requiring us to stand firm in our faith as we face many changes.

- Our beloved pastor (for me, beloved colleague and friend), Rev. Mary Beth Lawrence, is retiring after decades of faithful service.
- GPC is entering into an in-between time where we have gone from 2 full-time pastors just last year to 1-½ when I joined you in 2023, and now down to ½+, as I remain part time and am joined by a robust team of part-time leaders who will help us sail through the transition until the next full-time pastor arrives.
- Many of you are in the midst of a challenging season with health concerns or grieving the death of loved ones.
- Our nation is in tumult around perhaps the most contentious presidential election in our lived history.
- The natural world is conspiring with an increased intensity of extreme weather and the normal cycle of the seasons as the days grow shorter and the nights grow longer.

As I sit with the reality of our world as it is, I am reminded of a quote by Raymond Williams that is hanging on my office wall: "To be truly radical is to make hope possible rather than despair convincing."

And so I wonder: This Advent, how might we cling to the hope that our faith promises, especially as the world around us is doing a pretty good job of making despair convincing? How do we live according to the familiar hymn's direction?

*No storm can shake my inmost calm
while to that Rock I'm clinging.
Since Love is lord of heav'n and earth,
how can I keep from singing?*

This Advent we will be using the metaphor of the stable as a house for the Holy. We will consider how our hearts, our lives, our church might be known and experienced as a house for the Holy—a warm and sturdy place for hope to live and grow.

My prayer is that once we reach next spring, we will be able to look back at these next few months and say that we lived as hope-filled people of faith, and that God led us through a time of great uncertainty.

With Stubborn Hope and Abiding Faith,
—REV. LEANN HODGES
TRANSITIONAL PASTOR

WAYS TO CONNECT



www.gpchurch.org

301-948-9418

office@gpchurch.org

[@gpchurch_moco](https://www.instagram.com/gpchurch_moco)

MANY BLESSINGS

I will miss you.

I forget where I read the following: “The best part of a pastor’s ministry is being a witness to the presence of God among her flock.” The last 22.5 years have been good to me. I have seen God show up in our lives in so many ways:

- In the number of people who are actively engaged in **mission/community service** throughout the week, not to mention the nearly 100 people who have volunteered with our **Presbyterian Disaster Assistance teams**.
- In the caring for one another through the **Caring Card Table**. Sometimes the first people to sign the cards are those who have previously received them and know what powerful reminders they are of God’s love.
- In the growth of our **children’s ministry**, the addition of the playground, the children who lead worship, and the families who are dedicated to the faith development of their children.
- In the vitality of our **youth ministry**, and how the students are growing as worship leaders, too.
- In the amazing ministry called **VIPS**, where GPC seniors laugh, eat, serve, and grow together.
- In the **new members** who have joined over the years, touched our lives, and taught us so much about faith, if we were willing to listen and be changed.
- In the addition of a **columbarium** and **memorial garden**, where we remember and give thanks for the saints who influenced our faith.
- In **new ministries and revitalized ministries** – Christian Women/Men Fellowships, Creation Care Committee, Racial Justice Ministry/Matthew 25, children’s choir, new members in the Sanctuary Choir, a Prayer Network, and live streaming.

The list is much longer, but that’s all I have room for now.

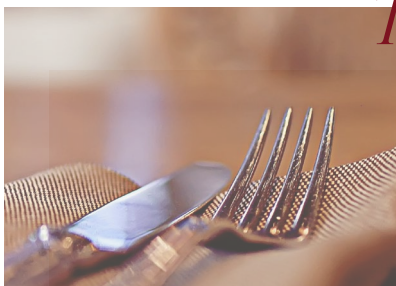
As I prepare to retire and move away from this vibrant community of faith, I will miss seeing God at work in all these ways and in the new ways that are to come. But I hope you know that God will still be here and will continue to guide and direct you.

I will miss you. As that great theologian Winnie the Pooh said, “How lucky I am to have something that makes saying goodbye so hard.” Lucky indeed. Blessed.

—REV. MARY BETH LAWRENCE
ASSOCIATE PASTOR



THERE'S ROOM *at the Table for You!*



Sign up for Table Fellowship as an individual, with a friend, or as a couple. This **new** program does not require everyone to host. As eight adults sign up, groups are created. After you participate in one group, you can sign up to be included in a different group. For questions or to be added to a group, contact Clara Pratt at office@gpchurch.org.



HONORING 22+ Years at GPC



Mary Beth's first VIPS meeting (in Fellowship Hall) – May 2002



Mary Beth preaching



Charlotte the Dog, Mary Beth, and Charlotte Spencer



Some of the faithful kitchen crew



Infant baptism

Mary Beth has abundantly blessed us with her gifts at GPC—from leading mission trips and preaching thoughtful sermons, to leading staff through umpteen transitions and providing pastoral care that words cannot adequately describe.

She has been at GPC for 22-½ years. That's over 2,700 worship services, hundreds of shared communions, 200–300 sermons, and learning to do all of the above on Zoom. It's working with over 50 staff through the years, including 10 other pastors. It's dozens of committee and Presbytery meetings every year, and pastoral visits to every hospital in the area.

When I think of Mary Beth, I think of 1st Thessalonians 2:8. *“Because we loved you so much, we were delighted to share with you not only the*

gospel of God but our lives as well.” For so many of us, Mary Beth is not just our pastor, she is also our friend. She has walked us through tough times as a church and in our personal lives. We have shared our lives with each other—she knows all about our families as we know about hers. We have laughed, cried, and served together. She knows the stories behind our quirks and is an integral part of our GPC story. She has helped us grow in our relationships with one another and with God, and for that we will be forever grateful.

Mary Beth – From a grateful congregation of your flock and your friends, well done, good and faithful servant! Go thou and enjoy your retirement! (And please keep in touch!)

—MARY SPENCER

Honoring Mary Beth at her last PDA Mission Trip – September 2024



Mary Beth and children during worship



Leadership Retreat – 2005



A Trinity of GPC Lady Spiritual Leaders: Mary Beth, Mary Austin, and Whitney Fauntleroy

EQUIPPING DISCIPLES

The Godly Play Advent Week 1 story begins: “Everything has changed. It is now the time of the color purple . . . Purple is a serious color and something serious is about to happen. A King is coming, but he is not the kind of King that people thought was coming. This King had no army, no great house, and no riches. This King was a baby who was born in a barn.

The King who was coming is still coming. This is full of mystery. You know, a mystery is hard to enter sometimes. That is why this time of Advent is so important. Sometimes people can walk right through a mystery and not even know that it’s there. This time of year, you will see people hurrying in malls buying things and doing this and that, but they will miss the mystery. They don’t know how to get ready or maybe they just forgot.

The Church learned a long time ago that people need a way to get ready to enter or even come close to a

mystery like Christmas. The Church set aside four weeks to get ready. This is such a great mystery that it takes that long to get ready. During this time, we are all on our way to Bethlehem. We are all making the journey. We are all getting ready to enter the mystery of Christmas, so let’s go with the prophets, the Holy Family, the shepherds, the angels, the magi, and all the rest to make the journey that was not just back then. It is also now.”

Source: *The Complete Guide to Godly Play*, Vol. 3, Living the Good News, Denver, CO 2002.

I think that this way of thinking about Advent is particularly poignant right now as we work through changes here at GPC and broader changes in the nation and the world. So let us remember *who* we are and *whose* we are, and that we are all on our way to Bethlehem.

—CAROLYN HAYES
DIRECTOR OF CHILDREN
AND YOUNG FAMILIES



Adult Ed Offerings

Sunday Morning

- 8:15 – Small Group, hybrid, Room 32/33 - continuing with *Celebration of Discipline* by Richard Foster
- 9:30 – The Present Word, hybrid, Room 206 - studying the “Fall Curriculum”
- 9:30 – Christian Classics, hybrid, Room 202 - studying “Martin Luther’s 95 Theses” by Timothy Wenger
- 9:30 – The Bible as a Whole, in person, Room 205 - using “Feasting on the Word Curriculum”

Wednesday Evening

- 7:30 – Bible Study, Google Meet, studying “Peter, the Making of a Disciple,” from Faith Alive
- 7:30 – Frederick Small Group, Zoom
November: TBD
December: Advent Study

Children’s Offerings

Sunday School meets most Sundays after the Children’s Message at the 11:00 worship service except for the first Sunday of each month (Communion Sunday) and some holiday weekends. We begin together in the Sanctuary and then, following the Children’s Message, are excused. The younger children meet for Godly Play in Room 14 and children from 1st to 5th Grades meet in Room 11.





Nov 4 – Kingdom Worker Celebration Night
 Nov 13 – Friendsgiving Potluck
 Nov 17 – Confirmation Information Meeting
 Dec 7 – Youth Help Deck the Halls at GPC | 10 a.m.
 Dec 13 – Youth Christmas Party | 7 p.m.
 Dec 22–Jan 1 – Youth Christmas Break
 Jan 4 – Snow Tubing Event
 Jan 5 – New Year Breakfast | 11 a.m.

GPC Youth

JOIN US!

Sunday Mornings | 11 a.m.
Wednesday Nights | 7–8:30 p.m.

GPC College

Join us for our monthly events! Mark your calendars!
 Nov 9 – Lettuce Talk about Tacos | 12 p.m.
 Dec 14 – Christmas Board Game Breakfast | 10 a.m.
 Jan 3 – Liberty Ski Day | 8 a.m.

Please contact Carrie for event-specific information.



Our Youth & College Ministry at GPC seeks to provide opportunities for our middle school, high school, and college students to **KNOW** one another, **SHOW** God's love to others through service, and **GROW** together with God at the center.

MUSICAL NOTES

The music program at GPC has gotten off to a great start this fall. We have heard from the Canterbury Ringers, the Praise Team, the Sanctuary Choir, and the children during worship. As music director, I am so grateful for the enthusiasm and dedication of those who lead each of these groups and for the faithfulness of all who participate in one or more of these ensembles. Personally, I have been so excited to restart the children's choir – the Joy Singers. We are having a great time together in our Sunday rehearsals singing, playing instruments, and learning songs of the faith. The children sang during worship in October and November and will participate again on December 22. In addition, the children will lead the 4:00 p.m. family worship service on Christmas Eve. The theme will be Las Posadas. All children ages 4–11 are invited and encouraged to participate!

The Sanctuary Choir will perform the cantata “Let There Be Christmas” on Sunday, December 15,

at both worship services. We are looking forward to telling the Christmas story through the music of one of our favorite composers, Joseph Martin.

Last, but not least, we all enjoyed a joyful and musically rich worship experience on Sunday, November 24, as we lifted our voices (and instruments!) in thanks for all of our blessings, and most especially, the blessing of Mary Beth's many years of service to GPC. All of the musical groups took part in worship that day. It was truly a time of celebration and thanksgiving.

Please contact me at kwilliams@gpchurch.org if you would like more information on any of the music programs at GPC. New members are always welcome!



ORCHESTRA CONCERTS AT GPC!

The Montgomery Philharmonic will hold the second concert of its 18th season in our Sanctuary on Sunday, **December 1**, at 6:30 p.m. The program will include *Pictures at an Exhibition*, IMM 50 – Modeste Mussorgsky, *Sensamayá* – Silvestre Revueltas, and *Concertino for Clarinet and Orchestra*, Opus 26 – Carl Maria von Weber. Future Sunday concert dates in their 2024–2025 season are **March 9**, **April 27**, and **June 8**. The orchestra will also perform at Asbury on Sunday, **January 26**, at 3:00 p.m. Admission is free but donations are gratefully accepted.



RJM “DROP—IN CONVERSATIONS”

Have you read or heard about the Racial Justice Ministry “Drop-In Conversations” at 9:30 on Sunday mornings in the library or Tuesday evenings on Zoom? We had lively conversations in October on “what does racism mean to you” and the “history of voter suppression” in our country. We’re taking a break for November and December to celebrate Mary Beth and Christmas, but look for more “Drop-In Conversations” to be scheduled starting in January. Check the weekly emails and Sunday bulletins for dates and details. We hope that you are curious enough to join in the conversation!

—DONNA DANNELS



CHRISTMAS WORSHIP

Services and Events



SUNDAY, DECEMBER 1

9:30 & 11:00 AM – First Sunday of Advent

FRIDAY, DECEMBER 6

6:00–8:00 PM – Annual Ornament-Making Party

SATURDAY, DECEMBER 7

10:00–Noon – Deck the Halls! Help decorate the church for Christmas!

SUNDAY, DECEMBER 15

9:30 & 11:00 AM – Christmas Cantata by the Sanctuary Choir –
“Let There Be Christmas” by Joseph M. Martin

In-person worship at both services and livestreaming at 11:00 AM

CHRISTMAS EVE, TUESDAY, DECEMBER 24

4:00 PM – Family service with children’s skit

6:00 PM – Lesson and Carols candlelight service

In-person worship at both services and livestreaming at 6:00 PM

CHRISTMAS DAY, WEDNESDAY, DECEMBER 25

Pre-recorded service – available for viewing anytime

(No in-person worship or livestreaming)

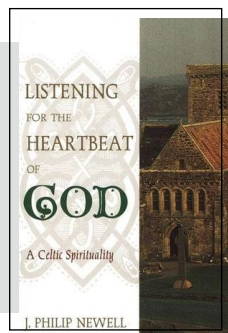
SUNDAY, DECEMBER 29

11:00 AM ONLY, with special handbell music

In-person worship and livestreaming

Note: The church building will be closed December 25 – January 1.

ADVENT BOOK STUDY



Our book study for Advent this year will be **Listening for the Heartbeat of God, A Celtic Spirituality** by J. Philip Newell. We are meeting on Sunday mornings at 9:30 in Room 35 from November 10 through December 15. Books are readily available on most bookseller websites.



MEN'S BREAKFAST GROUP

FIRST SATURDAY | 8:00 AM | LINDSAY HALL

In **October**, Jerry Brown's presentation provided information about GPC's long partnership with Rebuilding Together Montgomery County (RTMC) and showed homes that they had worked on in recent years. In **November**, Nona Silver and Gillian Hulsizer from the Animal Welfare League of Montgomery County told us about the organization's many programs. On **December 7**, John Travis will give a presentation on The History of GPC. Speakers for the **January 4** and **February 1** meetings are still being confirmed. Questions? Contact Ted Farrand (*call the church office*).



VERY IMPORTANT PRESBYTERIAN SENIORS {VIPS}

FIRST THURSDAY | 11:30 AM | LINDSAY HALL

One of the highlights of the VIPS calendar year is our annual Christmas Party! The 2024 party will be held on **December 5** and will include the reading of the Story of Christmas, a buffet lunch, a Christmas carol sing, Christmas-themed games, an optional gift exchange, and our Christmas outreach projects.

As we begin 2025, the theme for the early months of the year is MOVING FORWARD! from unique experiences, life-changing events, etc. Our **January 9** meeting will feature Jeff Hildebrant, who will share his love of music by his composing, singing, and/or guitar-playing and how his retirement has permitted him to explore his opportunities more intently. The program for February, Black History Month, will be presented by Jerry Brown, Yvonne Miller, Carole Tukes, and Frantz Wilson on **February 6**. They will share personal stories of how they have MOVED FORWARD from times in which they encountered challenges because of their race. Our traditional Soul Food lunch will be served. For more information, please contact Nancy Sanders (*call the church office*).



CAREGIVERS SUPPORT GROUP

SECOND SATURDAY | 10:00 AM – NOON | ROOM 30/31

This group is for GPC members and friends who are caring for loved ones with mental illness. Upcoming meetings will be held on **December 14**, **January 11**, and **February 8**. Questions? Contact Cathy Lyon (*call the church office*).



CRAFT GROUP

FIRST SUNDAY | 12:15 PM | LINDSAY HALL

The group continues knitting and crocheting to support requests. They have been asked to knit or crochet hats for the Prison Ministry in addition to prayer shawls and prayer squares by local service organizations. New organizations include Ingleside, Sunrise, and Adventist Shady Grove Hospital. We continue to support Holy Cross Hospital, The Equity Center, and JSSA (Jewish Social Services Agency). You can help too – just let Barbara know! Any pattern is fine, and yarn and patterns are available, if you need them. Prayer squares are 4"x4" so that a prayer card can be attached. Donations must be washed and placed in a plastic bag. Arrangements for pick-up can be made, if needed. The next three meetings will be on **December 1**, **January 5**, and **February 9***. Questions? Contact Barbara Clark (*call the church office*). *Note that the February meeting will be on the second Sunday of the month.



CUB SCOUTS

TUESDAYS | 7:00–8:00 PM | LINDSAY HALL & DOWNSTAIRS CLASSROOMS

Cub Scout Pack 64 has had a busy fall! We welcomed new scouts in **September**. The pack also enjoyed camping at the Lois Green Isaac Walton League property. Popcorn sales topped the **October** activity list. The pack sold popcorn individually and at booth sales in the local area, with proceeds to help support programming for the pack. Additionally, the pack sponsored a hike near Pennyfield Lock on the Muddy Branch Greenway. The scouts also enjoyed the annual Halloween party. **November** brought service projects for the pack. We help support local food pantries through the Scouting for Food campaign. Scouts received their hard-earned achievements at the November pack meeting. December brought more service opportunities through the Wreaths Across America in Frederick, and holiday cards for the residents at Sunrise Senior Living in Rockville. **January** and **February** events will include our annual Pinewood Derby, Scout Sunday, and Blue and Gold celebration. Our pack is open to boys and girls entering Kindergarten through rising 5th Graders. If your child is interested in participating, contact Barbara Clark (*call the church office*).



FOCUS ON STEWARDSHIP — WHY SHOULD YOU GIVE?

By the time you read this article, the formal Stewardship campaign will be well underway, and Consecration Sunday will have come and gone. We dream of 100% participation and hope that the giving estimates that we have received will support our 2025 budget. We're very grateful for a giving congregation and are thankful for every pledge and donation, no matter how large or small. If you have not yet pledged, know that it is never too late to do so. Again, we offer our gratitude.

I was interested in why people pledge/donate to the church, so I invited members from our congregation to comment on why they give to GPC. I also asked friends who are not GPC members if and why they give to their respective churches. Their comments are shared below.

GPC member: "GPC became our church home when we moved to Rockville in 1987. During our nearly 38 years here, we have participated in this beloved community in many ways with our 'time and talent.' Our financial contributions support our staff and maintain our church building, but our physical church is nothing without our financial contributions to efforts outside of our building. Please consider how you want to contribute to GPC's true legacy—the difference we make in our community and the world."

Global Methodist: "All that we have comes from God. By giving to the church, we honor God and acknowledge His grace to us. We are limited in what we can do individually to care for the needy, support the mission of the church, and bring people to Christ across the world. The strength of combined giving enables the church to make a difference."

United Methodist: "First, God asks us to give Him the first fruits of our labor. Second, I love my Church and when I joined, I made a commitment to give of my treasure to support the church. The church building needs care and maintenance, church staff need to be paid, and the programs within and outside the church need funding. The church needs to operate on a budget, but can't do so without knowing how much it can count on from pledges stating how much will be given."

Member of a Non-denominational Church: "As I grew up and observed the giving spirit of family, friends, and church folk, the realization of the need to have a giving spirit because it reflected God's nature began to dawn on me. I learned that everything I had, whether material or talent, had been given to me by God. As I began to grasp this concept of personal gifts, the magnitude of God's goodness began to grow for me. As a child, I felt

that I did not deserve 'God's gifts,' but He gave them to me anyway. I responded by giving as much as I could to God—a manifestation of those gifts in how I lived my life, exercised my gifts, and pursued walking with Jesus in a very real way. I also came to learn that our family tithe helped support the church. This was tough with young children and one income, but we found that returning our blessings in service-oriented stewardship and doing our chosen tasks in Godly ways was a good place to start our commitment to the financial component. And God has blessed us in many ways."

GPC member: "By the grace of God, I developed skills and talents to provide for my family. God has been generous to me and, likewise, fruitful giving is at the heart of the Christian faith. We should feel the joy of generosity, knowing that no matter how much or how little we give, our contributions will be put to beneficial use as we move forward with GPC's mission. We live in abundance and it is time to give back to His kingdom."

I think that the comments about stewardship from members and non-members of GPC are similar. You have shown your generosity in the past and for that we are grateful and offer many thanks.

—GARY SCHUMACHER
STEWARDSHIP COMMITTEE

GENEROSITY OPPORTUNITIES

First and foremost, thank you to everyone who has returned their 2025 Estimate of Giving commitment card. We are still accepting commitments and every response is important to fulfilling our ministry in furthering the Kingdom of God for next year.

There are various ways to still make donations for 2024. Cash, check, and e-gift transfer are popular. It is important to fulfill your generosity prior to **December 31**. If you intend to make a planned gift donation, please do so by **December 16**. Gifts of this type include stock, mutual funds, donor advised funds, and IRA/retirement plans. If you have questions, assistance is available from the Presbyterian Foundation, the church treasurer, or the Planned Giving Committee.

If you have not yet returned your Time and Talent card, please do so at your earliest convenience. Extra cards are available from the church office and at the Welcome Desk.

—PHIL MELBERG
STEWARDSHIP COMMITTEE



MERRY CHRISTMAS from GPC SPANS the GLOBE

GPC SPANS THE GLOBE ARTICLES
WILL RETURN IN FEBRUARY.

BRAZIL – Feliz Natal!

CAMEROON – Merry Christmas! &
Joyeux Noël!

CANADA – Merry Christmas!

PEOPLE'S REPUBLIC OF CHINA –
Sheng Dan Kuai Le!

CUBA, ECUADOR & EL SALVADOR –
¡Feliz Navidad!

**DEMOCRATIC REPUBLIC OF THE
CONGO** – Krismasi Njema! (Swahili)

GHANA – Afenkyiapa!

GUYANA – Merry Christmas!

HONG KONG – 生日快乐 (shèngdànkuaìlè!)

INDIA – Shubh Christmas! (Hindi) &
Krismas Ashamsakal! (Bengali)

INDONESIA – Selamat hari Natal!

CÔTE D'IVOIRE – Joyeux Noël!

JAMAICA – Merry Krismus!

JAPAN – メリークリスマス! (Merīkurisumasu!)

KENYA – Heri ya Krismasi! (Swahili) &
Nchipai e Kirismas! (Maasai language)

KOREA – 메리 크리스마스!
(Meli Keuliseumaseu!)

LEBANON – “عيد ميلاد مجيد” (Eid Mil) (formal) &
“عيد ميلاد سعيد” (Eid Milad Saeed) (informal)

LIBERIA – Sambala Krismas! (formal) &
Krismas Chreez! (informal)

MALAWI – Moni Wa Chikondwelero Cha
Kristmasi! (Chewa) & UKhisimusi omuhle! (Zulu)

MYANMAR – ပျော်ရွှင်သောခရစ္စမတ်ဖြစ်ပါစေ
(Pio shen da krismas phit ba se!)

THE NETHERLANDS – Zalig Kerstfeest!

NIGERIA – barka dà Kirsìmatì! (Hausa) &
E ku odun, e ku iye'dun! (Yoruba)

PAKISTAN – Bara Din Mubarrak Ho!

THE PHILIPPINES – Maligayang Pasko Po!
(Tagalog)

RUSSIA – Счастливого Рождества!
(Schastlivogo Rozhdestva!)

SENEGAL – Joyeux Noël!

SIERRA LEONE – Jabbama be salla Kirismati!

SOUTH AFRICA – Geseënde Kersfees!
(Afrikaans), UKhisimusi omuhle! (Zulu), and
Krismesi emnandi! (Xhosa)

SOUTH KOREA – 메리 크리스마스
(me-ri keu-ri-seu-ma-seu!) (formal) &
즐거운 크리스마스 (jeul-geo-un keu-ri-
seu-ma-seu!) (informal)

SWITZERLAND – Froueh Wiehnachte!
(Swiss German), Joyeux Noël! (Swiss French) &
Buon Natale! (Swiss Italian)

REPUBLIC OF CHINA (TAIWAN) –
Sheng Dan Kuai Le!

TOGO – Joyeux Noël!, Blunya na wo! (Ewe),
Jabbama be salla Kirismati! (Fula/Fulani) &
barka dà Kirsìmatì! (Hausa)

TRINIDAD AND TOBAGO –
Merry Christmas! & ¡Feliz Navidad!

USA – Merry Christmas!

VIETNAM – Chúc Mừng Giáng Sinh!

Sources: Google/other

—BARBARA OLDROYD



OPPORTUNITIES FOR GIVING TIME & GIFTS AT CHRISTMASTIME

HELP PROVIDE MEALS FOR THE IWWC AT CRABBS BRANCH!

GPC is continuing our tradition of supplying meals for the residents at the **Interfaith Works Women's Center** shelter during Christmas week (**December 22–28**). Volunteers can shop, deliver, cook, or serve—or all of the above! Whether you can donate a snack or a meal, whether you cook or call your favorite takeout place, it all helps. We welcome new helpers just as much as we appreciate our longtime volunteers!

You can find more information at www.signupgenius.com/go/70A0F48A8A87-iwwc. Questions? Contact Denise Schleckser (*call the church office*). Make it part of your Christmas tradition to help our neighbors experiencing homelessness!

DONATING CLOTHING & CALENDARS TO SUMMIT HALL ES FAMILIES

The colder months are now here, and many Summit Hall Elementary School children need warm coats, hats, and gloves. Gently used hand-me-downs are also welcome. The parents are always grateful for nearly new adult clothes as well.

If you receive too many 2025 calendars, pass them my way. All donations can be put in the plastic bin under the mailboxes. Thanks!

—MARILYN MORRISON

THE GIVING TREE



The Giving Tree will be up in the Gathering Space around Thanksgiving and collecting your gifts for those around our local area and worldwide who are less fortunate than we are. Information about organizations that the Community Engagement ministry is supporting this year will be provided in bulletin announcements, flyers, and weekly emails.

Please pick up an ornament and a flyer! All donations (including checks) should be received at GPC by **Sunday, December 15**. Our grateful hearts thank you! Questions? Contact Cindy Zammit (*call the church office*).

LITTLE FREE PANTRY

Thank you for supporting the Little Free Pantry. Our food insecure neighbors appreciate your donations. Your continued gifts will help our local community in this colder time of year. Current needs are spaghetti sauce, dried beans, rice, soup, oatmeal, breakfast foods, and fruit. Donations can be placed directly in the pantry or in the wooden bin in the Gathering

Space (Narthex). If you would prefer to make a monetary donation, you can donate via check mailed to the church or online. Please designate Little Free Pantry as the fund.

—ANNETTE WARD

REQUESTS FROM GPC'S PRISON MINISTRY

Our Prison Ministry continues to support the Clarksburg Detention Center and the Pre-Release Center (PRC) in Rockville. Their staffs have requested the following items for their inmates:

Clarksburg Detention Center

- Socks & undershirts (new, plain white; all sizes for men and women)
- Life Saver Mints, Hershey Kisses (plain), Honey Buns, and Fruit Snacks
- Dove bar soap (original)
- Postage stamps
- Amazon gift cards: a.co/flNHBNo
- Target gift cards: target.com/gift-registry/gift/mccf

Pre-Release Center

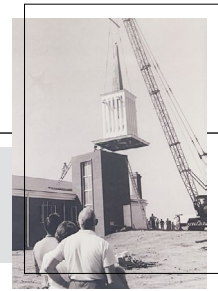
- Writing paper, note cards, postage stamps, envelopes, toothpaste, and deodorant for men
- Men's beanies – The Prison Ministry and Craft Group are collaborating to provide beanies for the adult men to keep their heads warm as they go to work. Because they take public transportation, they often have to stand outside in the cold for extended periods of time. If you knit or crochet, please contact Barbara Clark for a pattern. All items can be dropped off in the boxes in the church library.

Questions? Contact Shari McCann or Sandra Menzies. Your ongoing support is greatly appreciated!



HONORING GPC'S DIAMOND

ANNIVERSARY CONCLUDES



"Gaithersburg Presbyterian Church Honors Its Past and Celebrates Its Future!"

This is the last in our series of articles celebrating the May 17, 2024, 60th Anniversary of Gaithersburg Presbyterian Church! In the two previous issues of the Mainstream, we profiled some of our longest-serving members and folks who are working on our Pastor Nominating Committee (PNC). In these final articles, we focus on members and youth with an international heritage, all of whom set a great example for the present and future of GPC!



YAW AND GEORGINA OBENG

GPC has really benefited from the energy and dedication of Yaw and his wife, Georgina. They are both from Ghana but met at GPC and were married by Rev. Mary Beth Lawrence in 2010.

Yaw came to the US from Ghana in 1984 for graduate school. He worked for several private corporations before being recruited by NIST (National Institute of Science and Technology). In 2007, he moved to Maryland to accept that position. Of course, GPC happens to be just down the road from NIST, and he said, "I knew a bunch of people there, so it was much easier for me to attend." He joined GPC in 2009, after he and Georgina were married.



Georgina's career is in the field of healthcare, specifically working with people who've suffered head injuries. She lived in Gaithersburg back in the 1990's. GPC was in her neighborhood, and she found our church just by driving by. (Note to the Buildings and Grounds and Communications committees: the outside appearance and signage does make a difference!) She started attending in 1999, when Reverend Greg Seckman was our pastor.

Both Yaw and Georgina have contributed generously to the vitality of our church. Yaw has served on the Pastor Nominating Committee twice. He was on the PNC that called Mary Austin. He has been on Session, working on the Buildings and Grounds, Stewardship, and Digital Communication committees. He was chair of a Strategic Planning committee at one point, and also helps coordinate the Rebuilding Together Montgomery County (RTMC) projects with Jerry Brown.

You'll regularly see Georgina ushering. She has been a Deacon, taught Sunday School, and organized new

member luncheons. She makes a special point to talk to guests at GPC. Her advice to make GPC better falls right in line with that practice. "Make sure you talk to new people—the unfamiliar faces—because the way people are received at our church helps them decide whether they want to come back."

Yaw likes the mix of people at GPC, representing a variety of racial, intellectual, and theological points of view. He said that he has been in congregations that were not so open-minded. Yaw remembers Maxine Brown introducing him to the then-Chair of the Stewardship committee, taking his hand, and saying, "You need to put this man on your committee!"

He has seen a lot of changes at GPC. "We have fewer pastors and the congregation has shrunk." Many of our Caucasian members have retired and moved to North Carolina or Florida. Some older African members start spending more time in their home countries. He also feels that the church is more focused. "As resources are strained, we become more selective about what we do. We can't be a 'peanut butter' church that's spread too thin. We need to focus on a few things and do them well."

"We reached an inflection point in our church history during Covid 19. We made a transition from being one kind of church to another kind of church. We are now more open, with a wider variety of people making decisions. Initiating online services and continuing them after Covid has transitioned us from being a parochial church to one available to many more people." He feels that we still need more integration of our cultures. "Right now, we are more like a chopped salad than a soup."

What would he like to see? "Let's mix it up more in Lindsay Hall. Let's take more advantage of our digital abilities, and let's do more outreach to grow our church. Let's have a much bigger idea of what God is calling us to be and then follow that. Let's strive for GPC to be here for another 60 years!"

Based on an interview by Lucille Baur in October 2024.





GRACE NDJONGO

Grace, whose home country is Cameroon, shows us the importance of church feeling like home, and remaining active in your church home even when life hands you serious, unexpected challenges.

GPC was a church that Grace already knew a little about, but she wasn't prompted to visit until she wanted to support a close friend who had lost her husband and worshiped at GPC. She also attended a Christian Women Fellowship (CWF) rally with GPC CWF participation, and in 2014 was invited to attend GPC worship on a regular basis. She said, "I just continued worshiping at GPC because it felt like home. I want to feel at home in the House of God—it is my comfort place."

Grace jumped right into church activities. "It's not my thing to be somewhere and not be an active part of it." Serving as an Elder, being on the Nominating committee, Stewardship committee, and, of course, a member of GPC's chapter of CWF, are examples of her involvement over the years.

Grace is most visible singing with CWF. She had been a member of the CWF movement back in Cameroon. Although she started attending GPC as "just a regular member," when officer election time rolled around, she found out that her CWF sisters wanted her to become their president. She's been president since 2016.

This past late winter/spring, when she was 60 years old, she started having headaches and then difficulty speaking. Some doctors suggested that it was just her age, but 60 seemed too young to not be consistently able to speak. She had trouble getting doctors to take her symptoms seriously, until she was finally able to find a medical group who would properly care for her. In April, they discovered a growth in her brain that required surgery. "It was really hard! I am still recovering." She thought that she should step down from her CWF leadership position, but the members supported her throughout her ordeal, even when she couldn't talk, and held the president position for her. Grace said, "I encourage my friends to continue their Christian service, even when times are rough."

What does she like best about GPC? "To me, it is a big family. I wouldn't want to be anywhere other than GPC!" As we celebrate the 60th anniversary of GPC, she shared that, "So many things are changing. We are growing more like a family. We are embracing everybody. That is a big thing for me!"

Her advice: "Let us just continue to let the Holy Spirit lead us in a way that the Holy Spirit would want. When we allow that to happen, we can do things that we might never have thought we could do! I encourage everyone to be an active part of the church. Don't be a 'pew worshiper' and head out with your purse when the service is finished. Try your best to make meaningful contributions to the growth of the church!"

Based on an interview by Lucille Baur in October 2024.

Perhaps you know the first two lines of the song, *The Greatest Love of All*. "I believe the children are our future. Teach them well and let them lead the way." I hope that you know we have some great young and young adult leaders right here at our church who give us good reasons to celebrate the future of GPC! Read on to learn more about Tallie and Aria Chen, David Fofuh, and Ninna Nana.



TALIESIN (TALLIE) AND MARIAN (ARIA) CHEN

It's hard to believe that these two little ones, Tallie, age 8 in 2nd Grade, and Aria, age 5 in Kindergarten, have been as involved as

they have in GPC activities. Of course, the credit for that belongs to their parents, Tom and Emma Chen. Both children were born in the United States, but Tom is from Taiwan (the Republic of China) and Emma is

from Mainland China. Their parents started taking them to GPC services when each one was a month old—in 2016 for Tallie and in 2019 for Aria. During the years since then, they've been part of Zoom gatherings during Covid, Sunday School classes, helping with Communion, reading scripture during services, Joy Chimes and Joy Singers, Vacation Bible School, Young Family events, and they even participated with their mom and dad in the Labor Day Interfaith 5K Run! They set quite a fine example for us all!

Based on a conversation with Tom by Lucille Baur in October 2024.



DAVID FOFUH

David is 16 years old and a 10th Grader at Oakdale High School in Ijamsville, Maryland. He has been coming to GPC since 2013 and is a member of the GPC Youth Group. David's parents, Peter Fofuh and Joelle Pokam, are from Ghana, and he was born there. He joined

his parents at our Jumpstart meeting this spring and wasn't shy about raising a personal concern of his. He felt that GPC needed to build a closer relationship between our youth and our adults. David was invited to a GPC Communications committee meeting to expand upon his thoughts and then two committee members attended a youth group meeting. Change takes time but let's all remember to greet our youth when we see them. Reach out to Carrie Larsen to deliver a personal invitation to youth group members when there is a church event in which youth might be interested in participating. Because of David's input, you'll start seeing youth assisting in worship services.

Written by Lucille Baur in October 2024, based on David's attendance at a spring Communications committee meeting.



NINNA NANA

Ninna is 31 and works as a Gastroenterology Physician Assistant/Associate. She is the daughter of GPC members Joseph and Mary Nana, who were born in Cameroon. She says that she has pretty much grown up in GPC and values the diversity and welcoming

nature of our congregation. She remembers her parents joining the church when she was in 1st or 2nd Grade. Confirmed when she was in middle school, she was a part of GPC's youth group in high school. Even with the busy schedules of a teen and now young adult, she has maintained a strong involvement with GPC. In the past she worked with Malvin Duncan in the nursery, helped set up for new member luncheons (back when they were still hosted in Fellowship Hall), was briefly part of the Strategic Planning Committee in 2018, and has intermittently assisted as a Lay Worship Leader since 2016. After having ushered occasionally, she is now on the schedule for the third Sunday of every month. Make sure that you say hello to her. Ninna, not only do you make your parents proud, you make your whole GPC family proud as well!

Based on an interview by Lucille Baur in October 2024.

THANK YOU TO OUR INCOMING ELDERS & DEACONS AND THE NOMINATING COMMITTEE!

We thank our newly elected Elders & Deacons for answering God's call. They will be ordained during worship in January 2025. Thank you, too, to our Nominating committee for all of their hard work!

Class of 2026 Elder

Sandra Menzies

Class of 2027 Elders

Tom Bahls

Michael Baxter

Corinne Kuypers-Denlinger

Larry Masselink

Paul Njofang

Loyce Simfukwe

Class of 2027 Deacons

Malvin Duncan

Mary Masselink

Mary Nana

Nominating Committee

Elisa McClelland, Ruling

Elder and Chairperson

Jerry Brown

Donna Gregory

Sandra Menzies

Alvine Pouemi





GPC's Creation Care Committee is honored by Montgomery County at the Climate Solutions for Congregations Summit: (L-R) Lisa Whitehead, Larry Masselink, Laura Wilson, Laurie Wallace-Lanham.

GPC'S CREATION CARE COMMITTEE *Honored by Montgomery County*

On October 13, Montgomery County (MoCo) honored a number of congregations from diverse faiths for their efforts in environmental sustainability, including GPC! The “Climate Solutions for Congregations: Bridging Spiritual Wisdom and Environmental Stewardship” summit gathered environmental stewards from Christian, Jewish, Islamic, Sikh, and Universalist traditions to share “green” successes, explore “green” ideas, and discuss MoCo’s ambitious Climate Action Plan to reduce our county-wide carbon footprint to zero by 2035. How uplifting to hear how so many faiths feel called by the Creator to be good stewards of Earth and its myriad gifts.

County Executive Marc Elrich noted that climate change requires MoCo to pivot from a “government knows best” mentality to a “we need community partners” mentality. Our planet’s climate is clearly warming; we are past the time of contemplating solutions. For our Earth, ourselves, and our grandchildren, we must implement immediate changes in the way we live—both individually and communally. Faith communities are key partners precisely because we engender trust and hope within our communities; we can discuss difficult truths and challenging changes.

Restoring God’s Creation has been a focus at Presbyterian General Assemblies (GA) since 1971! In 1990, at the 202nd GA, PC(USA) approved “Restoring Creation for Ecology and Justice” through equity, sustainability, frugality, and community. Eco-stewardship is defined as “actively caring for creation as a way to love one’s neighbor.” In a 1997 statement, Presbyterian Earth Care (a “green team”

of church members from each Presbytery) noted that our Triune God:

- “calls us to sacrificial, loving, and joyful participation in caring for the fullness of that creation . . .
- calls us to carry on the holy work of transforming brokenness into wholeness . . .
- calls us to witness boldly as servants and prophets to our age.”

In 2022, the 225th GA published “Investing in a Green Future: A Vision for a Renewed Creation,” again stressing intertwined goals of environmental, racial, and economic justice as part of the caring stewardship we are called to as God’s people.

Please try the “green hints” found in each Sunday’s bulletin and GPC’s weekly emails. Look for ways to focus on stewardship and sustainability in our display case near the church library. Each April, when CCC hosts Creation Tables, try out new “good, better & best” practices for actively caring for God’s Creation. Incorporate daily “green” choices, as small as bringing your own water bottle everywhere and as large as choosing to use renewable energy, in our individual lives, in our church programs, and in the larger communities in which we are each involved.



GPC is recognized for Efforts in Environmental Sustainability.

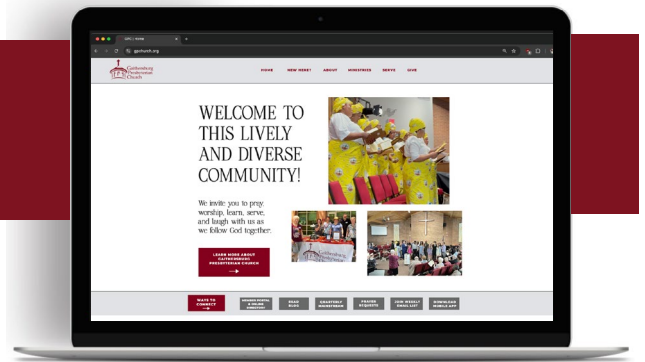
—LISA WHITEHEAD

STAY INVOLVED WITH THE GPC WEBSITE!

One of our most important means of communicating information to our members—and to prospective new members—is our GPC website! We hope that you find it helpful. We also want to know if you have difficulty with the website or have any suggestions for additions to it.

Here are some ways to stay involved:

- Our online Servant Keeper Member Directory should top the list of MVFs (Most Valuable Features). But it can't reach that status without your input. A big "Thank You" goes out to everyone who has already posted their photographs. Congratulations to Fletcher and Carole Tukes, who won a \$50 gift certificate to Il Porto restaurant from a drawing, held at our churchwide potluck on October 6, for all those who had already posted their photos. When you add your photo, you'll be eligible for a second drawing to be held before the end of this year! Details are in the bulletin announcements. Don't forget, the general passcode for the Member Portal only needs to be entered once. It can be saved, so you don't



have to enter it each time you use the directory. If you forget the passcode, call the GPC office at 301-948-9418, or ask Lucille Baur or Paul Whitehead on the Communications committee.

- The website will also help keep you up to date on GPC events, displaying featured announcements and a year-long calendar. To add an announcement, email office@gpchurch.org.
- Exciting plans for new content to the website are currently under development and will be shared when a new feature becomes active!

Using the GPC website at www.gpchurch.org regularly will help you stay informed and involved!

—LUCILLE BAUR
COMMUNICATIONS COMMITTEE

BUILDINGS AND GROUNDS UPDATE

Have you noticed anything new? Your Buildings and Grounds committee has been working hard to keep our church bright and clean and in good working order. Through your generous donations to the Within These Walls fund, in addition to your regular donations, we have been able to:

- Let the light shine! We replaced the old, single-paned, aluminum windows in the Sanctuary with new, double-paned, insulated vinyl windows with remote-controlled shades. These windows should pay for themselves in energy savings in about 5 years.
- Extend the life of our parking lots. The cracks were filled and both lots were sealed and restriped to keep them in good shape.
- Keep GPC looking fresh with new paint inside and outside. We painted around the south entrances, under the ramp, and in the hall in Building 1 (our original church building).

We've also done many smaller projects that make GPC a beautiful, safe, and comfortable church home. Projects that we'd like to do in the future include:

- Brightening the Sanctuary by replacing the overhead lights
- Replacing the worn carpeting in Spencer Hall with vinyl flooring for longer wear
- Replacing the vinyl flooring on the first floor of Buildings 3 & 4 with flooring matching that used on the second floor

Please continue to give to Within These Walls to help pay for these projects. We thank you for your ongoing support!

—ANNETTE WARD
CHAIR, BUILDINGS AND GROUNDS



UPDATE FROM THE PASTOR NOMINATING COMMITTEE

It's still early days for the Pastor Nominating Committee (PNC). We have received applications from several candidates and identified a few that we will have preliminary conversations with. As of this writing, we have had several conversations. Most candidates have experience in small churches, where the average weekly attendance is less than 100. Nearly half of the candidates have served at churches with fewer than 50 in attendance each Sunday. (GPC averages just over 350 each week.) Session voted to increase the starting salary slightly, hoping that doing so will broaden the candidate pool.

We truly appreciate the prayerful support for the members of the PNC by this congregation and by Session. Please continue to pray for Jerry Brown, Grace Atanga Fuh, Laurie Gira, Stuart Hayes, Natalie Jorges-Castellanos, Serge Kamba, Yaw Obeng, Akiko Taketani, and Francie Whitlock.



STEPS TO CALLING GPC'S NEW PASTOR

- ✓ 1. The Congregation completes the Congregational Assessment Tool (CAT).
- ✓ 2. The CAT is interpreted for GPC Leadership.
- ✓ 3. The Congregation participates in Mission Jumpstart.
- ✓ 4. GPC elects a Pastor Nominating Committee (PNC).
- ✓ 5. The Congregation prays for the PNC.
- ✓ 6. The PNC begins meeting with a Committee on Ministry (COM) Liaison.
- ✓ 7. The PNC meets to discuss a theology of call, establish roles, and set a meeting schedule.
- ✓ 8. GPC Leadership reviews the Mission Jumpstart Report.
- ✓ 9. The first draft of a Mission Discernment Profile (MDP) is completed.
- ✓ 10. The final draft of the MDP is approved by the PNC and Session.
- ✓ 11. The final draft of the MDP is approved by the COM.
- ✓ 12. The MDP is posted on the Church Leadership Connection (CLC) website.
- ✓ 13. The Congregation prays for the call process.
- ✓ 14. The PNC reviews Pastoral Discernment Profiles (PDPs), which are like résumés, as they are received.
- ___ 15. Top candidates are invited to an initial interview on Zoom with the PNC.
- ___ 16. The PNC checks references for the candidates in whom they are most interested.
- ___ 17. The Executive Presbyter completes a Presbytery check on all the final candidates.
- ___ 18. The PNC arranges for weekend-long intensive interviews of the final candidates.
- ___ 19. The PNC prayerfully discerns which of the candidates God is calling to GPC.
- ___ 20. The Congregation prays for clear discernment.
- ___ 21. The PNC extends a Call to the person they believe is being called by God to serve GPC.
- ___ 22. When the candidate has accepted, a National Capital Presbytery Clearance Exam is arranged.
- ___ 23. The Terms of Call are negotiated by the PNC and HR.
- ___ 24. The PNC requests that the Session call a Congregational Meeting.
- ___ 25. The Congregation prays for the pastoral candidate.
- ___ 26. The candidate preaches at a service and a Congregational Meeting follows.

Color Key for Responsibilities:

Congregational • GPC PNC/Leadership • National Capital Presbytery

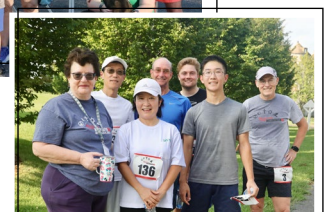
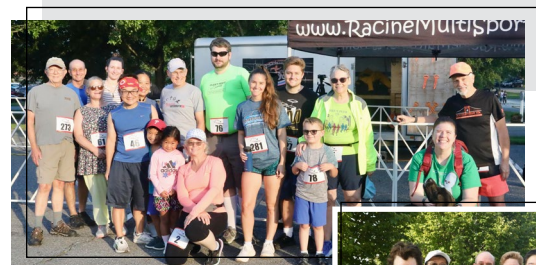
We're keeping a checklist in the Narthex showing completed tasks and milestones reached. A photo of the large foam core board display is included to the left. I hope that you'll follow along with us.

—STUART HAYES
PASTOR NOMINATING COMMITTEE

FUN AT ANOTHER INTERFAITH 5K!

The 2024 Interfaith 5K was held on Monday, September 2. The GPC Striders had the third largest team and participants had a lot of fun – walking, running, cheering, and sharing. After the race, we enjoyed a lovely brunch at David and Ginny Alsopp's home. Consider participating next year – it's a great way to celebrate Labor Day!

—SANDRA MENZIES





CHRISTIAN SYMPATHY

*We extend our sympathy to the members
of our congregation who have lost loved ones.*

JoAnn Barney

her mother, Donna Sword,
in Hagerstown, MD
August 4, 2024

Malvin Duncan

his sister, Quintheta
"Cookie" Lucinia Lowery,
in Baltimore, MD
September 18, 2024

Richard Lowery

his sister, Gloria Talford,
in Reading, PA
September 20, 2024

Crystal Blyler

her husband, Van Sickler,
in Rockville, MD
October 7, 2024

Sara Munzer

her mother, Elvera Bergdolt,
in Gaithersburg, MD
October 7, 2024

*We mourn the loss of
members who have died.*

Jane Hyndman

in Gaithersburg, MD
August 20, 2024

Family of Nancy Powell

(former GPC Director of Music)
in Alexandria, VA
October 6, 2024

Doris Gordon,

wife of the late Gary Gordon,
in Gaithersburg, MD
October 14, 2024

Judge John McAuliffe

(GPC's last remaining charter member)
husband of the late Barbara McAuliffe,
in Germantown, MD
October 25, 2024

Robert Lagas

husband of Sally Lagas,
in Olney, MD
October 25, 2024

DIRECTORY CHANGES

*Addresses and phone numbers
are available through the church office.*

Address change 

Phone number change 

Jim & Anna Davidson  

Salome Abeja 

Joan Simmons 

*Happy 
Anniversary!*

62 YEARS

John & Kay Travis
August 11, 1962

50 YEARS

Gary & Joyce Schumacher
August 24, 1974

45 YEARS

Alan & Diane Thompson
September 22, 1979



SANCTUARY FLOWER ORDERS

WANT TO DONATE POINSETTIAS *for the Christmastime display?*

Poinsettias cost \$13/plant and the last day to place an order is **Sunday, December 8**. To do so, go to gpchurch.org/poinsettia-form or scan the QR code below. You may also place a check in the offering plate or mail it to the church office. You may take plants home with you after the Christmas Eve 6:00 PM service.

Flowers may be given in honor or memory of someone, or to celebrate a special occasion.

The weekly altar flowers for Sunday worship services cost \$50, and you may take them home after the 11:00 AM service. To place your order, go to gpchurch.org/flower-form or scan the QR code below.



THE MAINSTREAM

Distribution of Newsletters and Submission Deadlines for Articles

The Mainstream is published quarterly. It is sent electronically and hard copies are mailed in February, May, August, and November.

**Submissions should be sent
to jobermiller@gpchurch.org and
bmoldroyd53@gmail.com
by January 15, April 15,
July 15, and October 15.**

Questions? Contact the church office.

FINANCIAL SUMMARY REPORT

October 2024

% OF
2024 YTD BUDGET

INCOME

Envelope Pledged.....	\$548,977	73%
Envelope Unpledged	\$224,119	90%
Loose Offering	\$16,587	111%
Other Income	\$1,430	48%
Room Rent.....	\$400	0%
Interest & Dividends	\$8,712	73%
Manse Rental	\$22,400	83%
Bequest Unpledged.....	\$281,627	0%
Capital Maintenance Reserve.....	\$0	0%
Carryover	\$0	0

Total..... \$1,104,252104%

EXPENSE

NCP Membership	\$21,160	75%
Human Resources.....	\$513,070	81%
Buildings & Grounds.....	\$184,060	80%
Office Operations.....	\$23,507	63%
Communications.....	\$3,009	67%
Stewardship	\$2,244	32%
Comm Engagement	\$88,434	89%
Eq Disciples.....	\$14,417	74%
Vital Worship	\$4,576	44%
Congregational Life	\$1,729	58%
Other.....	\$0	0%
Session	\$739	51%

Total..... \$856,945 79%

NET \$247,307

To request a complete financial summary,
email accountingmanager@gpchurch.org.



GPC MEDIA POLICY

Gaithersburg Presbyterian Church (GPC) uses print and digital media of church life in communications materials to share the ministry of GPC with our congregation and community at large. GPC reserves the right to use any media taken at any activity sponsored by GPC, without the express written consent of those individuals included within the media. GPC may use any such media in publications, social media, and any website.



THE MAINSTREAM

Gaithersburg Presbyterian Church

610 South Frederick Avenue

Gaithersburg, MD 20877-1297

RETURN SERVICE REQUESTED

NON-PROFIT U.S.
ORGANIZATION
U.S. POSTAGE
PAID
Suburban Maryland
PERMIT NO. 10005

HAPPY THANKSGIVING & MERRY CHRISTMAS!



FIND IT FAST!

- Honoring Reverend Mary Beth's 22+ Years at GPC! (p. 3)
- Montgomery Philharmonic Upcoming Concerts (p. 6)
- RJM "Drop-In Conversations" (p. 6)
- Christmas Worship Services and Events (p. 7)
- Focus on Stewardship – Why Should You Give? (p. 9)
- Merry Christmas from GPC Spans the Globe (p. 10)
- Gift-Giving Opportunities to the Community (p. 11)
- GPC's 60th Anniversary – Thoughts from (pp. 12–14)
Yaw Obeng and Grace Ndjongo and about
Tallie & Aria Chen, David Fofuh, and Ninna Nana
- Our Incoming Elders and Deacons (p. 14)
- Creation Care Committee Honored (p. 15)
- Staying Involved with the GPC Website! (p. 16)
- Buildings and Grounds Update (p. 16)
- Pastor Nominating Committee (PNC) Update (p. 17)
- Ordering Christmas Poinsettias for the Sanctuary (p. 19)