

ELIZABETH DAVIS



INVESTMENT  
GUIDE 2025



ELIZABETH DAVIS  
ELIZABETHDAVIS.COM.AU  
@ELIZABETHDAVISDESIGN\_





# TABLE *of* CONTENTS

Pg. 3	Welcome
Pg. 4	About the Studio
Pg. 5	About the Designer
Pg. 6	Who This Guide is For
Pg. 7	The Value of Interior Design
Pg. 8	Why Interior Design is an Investment in Your Future
Pg. 9 - 10	Signature Services
Pg. 11 - 13	Curated Packages and Investment
Pg. 14 - 15	The Process: From Start to Finish
Pg. 16	Client Collaboration and Communication
Pg. 17 - 19	Frequently Asked Questions
Pg. 20 - 26	Portfolio
Pg. 27	Next Steps
Pg. 28	Get in Touch





# WELCOME

There's a moment, just before you step through the door, where anticipation lingers. The feeling of arriving home—of stepping into a space that holds your story, reflects your values, and nurtures your wellbeing—is unlike any other. But a home that truly speaks to you doesn't happen by chance. It's created with intention.

My role is to translate the unspoken—your vision, your needs, the way you want to feel—into a space that is as functional as it is beautiful. Every element is chosen with purpose, every detail considered. Whether you're seeking a sanctuary for restoration or a workspace that aligns with your ambitions, I design with your individuality at the heart of it all.

This Investment Guide outlines how we can bring your vision to life, ensuring the process is seamless, considered, and deeply personal. Luxury isn't just about aesthetics—it's about creating a space that not only meets your needs but anticipates them, shaping an environment that enriches your daily life in ways you may never have imagined.

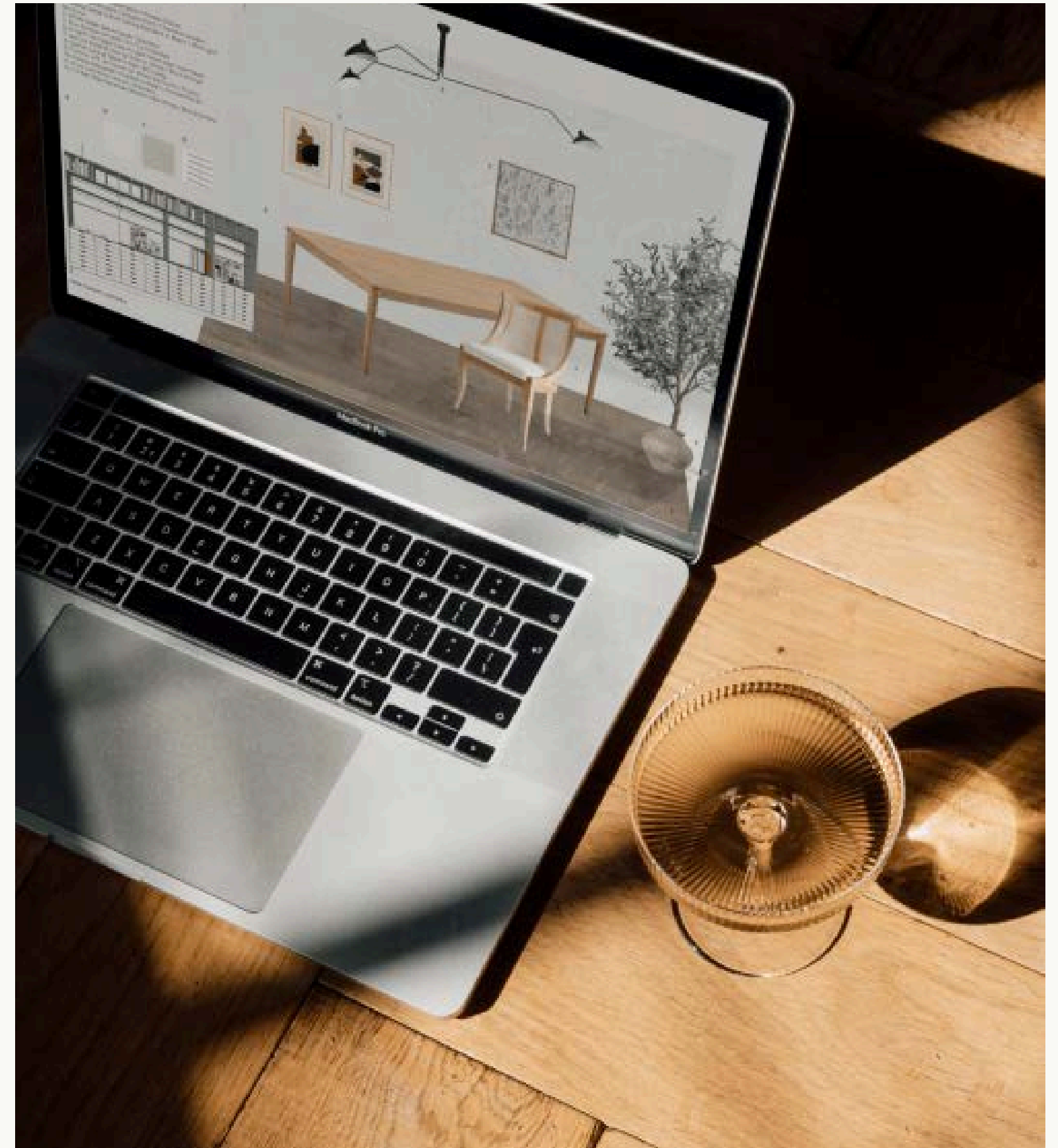
I look forward to beginning this journey with you.

With Love,

Elizabeth Davis  
Principal Interior Designer

# ABOUT *the* STUDIO

Your home and workspace should be more than just aesthetically pleasing—they should be an extension of your wellbeing, thoughtfully designed to support both your physical and emotional needs. Through my virtual interior design and styling services, I collaborate with creative entrepreneurs all across Australia, crafting spaces that blend beauty, function, and authenticity. My approach merges technical expertise with an intuitive understanding of how a space should feel, resulting in environments that tell a deeply personal story. Every detail is intentional, every design a reflection of what truly matters—an investment in the way you live and work.







# *Principal* Designer

**ELIZABETH DAVIS**  
Principal Designer

A truly transformative space has the power to elevate your life—it shapes the way you move, breathe, and experience each moment. Design is not merely about aesthetics; it's about creating an environment that nurtures your wellbeing, fuels your inspiration, and supports your every need. This is the heart of my work.

My style is layered and nuanced, blending contemporary and mid-century influences with thoughtfully chosen antiques and the quiet elegance of British Regency and Georgian design. Inspired by Australia's rich cultural landscape, my work balances heritage with modernity, creating spaces that feel deeply personal and inherently timeless.

But beyond aesthetics, I understand the profound impact of design on everyday life. My own journey into interior design began with a defining moment—one where I learned, firsthand, how much our surroundings influence our sense of comfort and ease. That experience shaped my philosophy: a space should be more than well-designed; it should support you—physically, emotionally, and spiritually. It should be a sanctuary that nurtures your every need, providing both comfort and inspiration, reflecting the essence of who you are.

Through my virtual interior design and styling services, I collaborate with creative entrepreneurs across Australia, helping them craft spaces that honour their lifestyles and aspirations. Every project is approached with intention, ensuring that each design is not only visually refined but a seamless reflection of the way you want to live.

And while I am endlessly drawn to Old Hollywood films, antique treasures, and the quiet pleasure of a well-loved book, my greatest joy is found in creating spaces that tell your story—spaces that feel like home in every sense of the word.





# WHO THIS GUIDE IS FOR

## WHO THIS GUIDE IS FOR

As a creative entrepreneur, you understand the importance of a space that nurtures your creativity, supports your growth, and fuels your inspiration. But if you're tired of feeling stuck in spaces that don't serve you, or overwhelmed by design choices that don't align with your vision, then this guide is for you.

Whether you're looking for a luxurious home that supports your wellbeing or a workspace that aligns with your brand identity, I'm here to help you create a space that is more than just visually stunning—it's a space that empowers you. Your environment is not just where you work or unwind; it's an extension of who you are and a foundation for your success—in business and in life.

Through my tailored virtual interior design services—available across Australia—I'll guide you through the process of creating a space that feels authentically yours. Every design decision is made with intention, balancing beauty and functionality while reflecting your lifestyle, values, and brand.

Together, we'll craft a space that nurtures your creativity, fosters wellbeing, and inspires you to reach new heights—where you feel more focused, more at ease, and more aligned with your goals. A space that, at the end of the day, feels like a true sanctuary—one that recharges and replenishes you, ready to inspire you again tomorrow.





# THE VALUE *of* INTERIOR DESIGN

## THE VALUE OF INTERIOR DESIGN

A well-designed space isn't just a luxury—it's an investment in your wellbeing, creativity, and success. As a creative entrepreneur, you face unique challenges when it comes to curating an environment that both nurtures your aspirations and reflects your personal or professional identity. That's where my virtual interior design services come in: I specialise in transforming your space into a true reflection of your values, goals, and style, creating an environment that supports you in all the right ways.



# Why Interior Design is an *investment* in your future

**COMMON  
CHALLENGES  
YOU MIGHT BE  
FACING**

1. Overwhelmed by Choices: You’re inundated with endless options in decor, materials, and furniture, and it’s tough to make decisions that truly align with your vision. The fear of making a wrong choice makes it feel like one misstep could ruin the entire cohesion of the space.

I’ll guide you through the decision-making process with a tailored design plan, ensuring that every choice aligns with your lifestyle and goals. Together, we’ll create a cohesive, intentional space where each element supports your vision and enriches your life.

2. Struggling to Balance Beauty and Functionality: You want your space to be both stunning and practical, but it feels impossible to strike the right balance. The result? A space that doesn’t quite meet your needs or fully reflect your style.

I specialise in designing spaces that blend beauty with functionality, ensuring every room serves its purpose while remaining aesthetically pleasing. Whether it’s your home or workspace, I’ll create a harmonious design that supports your wellbeing, creativity, and success.

3. Not Sure How to Reflect Your Brand in Your Workspace: Your workspace should reflect who you are and fuel your professional goals, but you’re unsure how to bring your brand identity into your home office.

With my virtual design services, I’ll help you create a workspace that mirrors your brand identity, making it not only functional but also a true representation of your values and vision. This space will inspire you to perform at your best and speak to your audience in a way that aligns with your business.

4. Styling Choices Feel Like a Guessing Game: Even if you’ve already made some furniture choices, your space still feels incomplete. The final touches—decor, art, or accessories—seem overwhelming, and you’re unsure how to make the right decisions.

With my virtual styling expertise, I’ll bring clarity to the styling process, carefully curating pieces that reflect your style and bring harmony to the space. Together, we’ll finish your space with intention, creating a polished, cohesive look that feels uniquely yours.

5. A Lack of Confidence in Your Styling Decisions: You know what you like, but when it comes to choosing the right decor, you’re second-guessing yourself. You’re not sure how to make your space truly reflect your personality and vision.

I’ll empower you to trust your instincts. Through expert guidance and a curated selection of luxury decor, I’ll help you make confident styling choices that align with your vision, giving you a space that feels complete and authentic.

**THE RESULTS  
YOU WILL  
ACHIEVE**

- A cohesive, intentional space that’s a true reflection of your personality, values, and brand, helping you feel more at ease and aligned with your goals.
- A space designed to nurture creativity and success, where beauty and functionality come together seamlessly.
- Confidence in your design decisions, with expert guidance and clear direction throughout the process.
- A workspace that amplifies your professional identity, fostering an environment where you can focus, create, and thrive.
- A home that supports your wellbeing, where every piece serves a purpose and contributes to a sense of calm and inspiration.





# SIGNATURE SERVICES

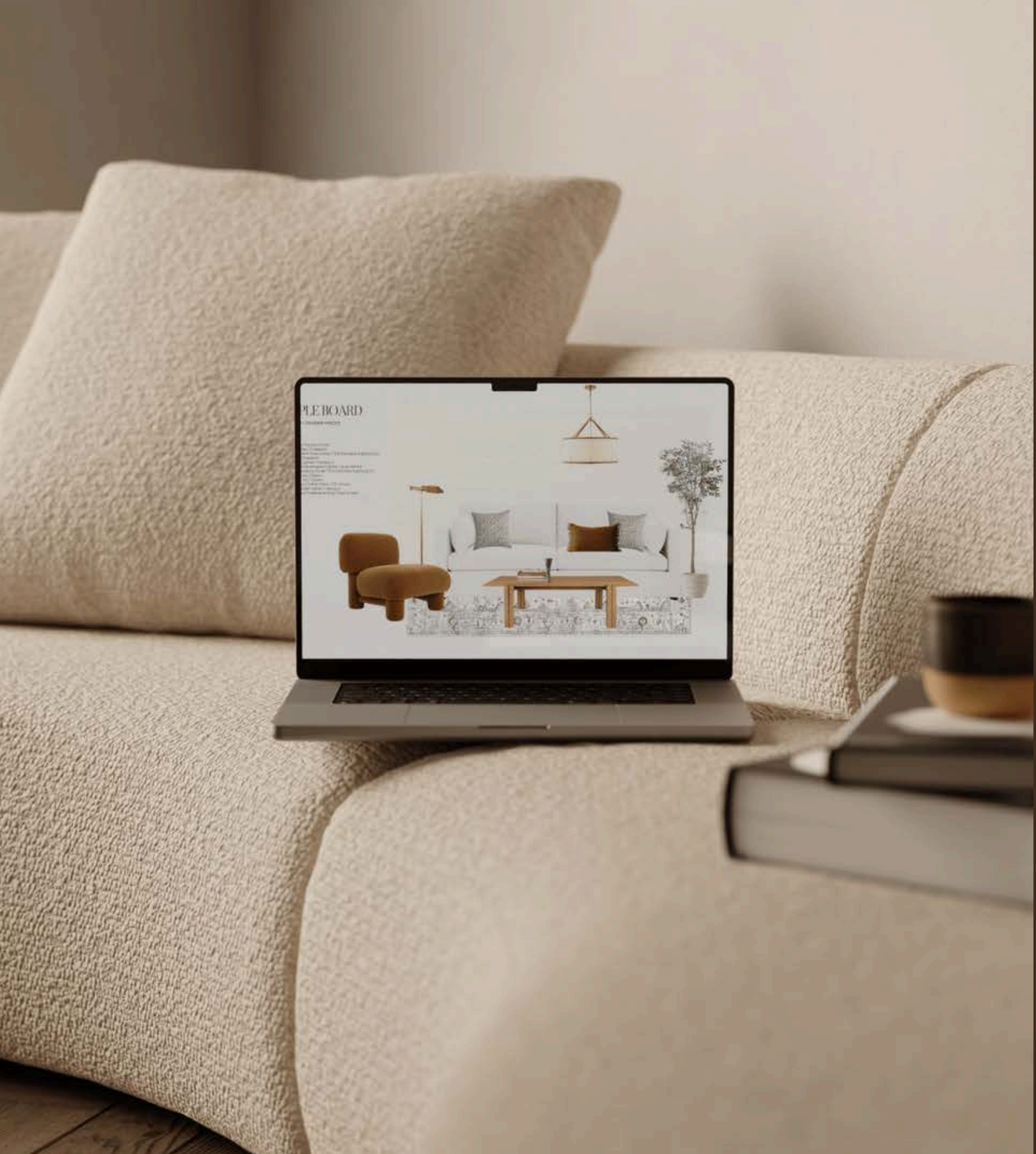
## VIRTUAL INTERIOR DESIGN

My signature virtual interior design service is crafted to transform your space into more than just a visual experience—it's a sanctuary that nurtures your entire being. Having personally navigated the profound impact of a supportive environment during a challenging time, I deeply understand how our surroundings can influence both our physical health and emotional wellbeing. By thoughtfully integrating ergonomic design, natural light, and a soothing colour palette, every element is carefully chosen to harmonise with your life's rhythms. This process doesn't merely focus on aesthetics but on creating a space that enhances your daily experience—where every corner functions with intention and reflects your personal aspirations.

This bespoke offering marries the professional insight of interior design with the freedom and flexibility of a fully virtual service. From the initial concept to tailored floor plans, refined design advice, and detailed recommendations, I provide you with a comprehensive design package that serves as the blueprint for your transformation. Whether you are reimagining a room in your home or designing a workspace that fuels your creativity and brand identity, I will guide you through each step, empowering you to bring the vision to life in your own time, at your own pace, with a sense of clarity and purpose.

## WHAT'S INCLUDED IN EACH PACKAGE

- Mood Boards – Curated visual representations that capture the essence and mood of your space, ensuring every design element aligns seamlessly with your vision.
- Spatial Planning – A custom floor plan crafted to optimise furniture placement and functionality, enhancing flow and ensuring your space serves its intended purpose.
- Specifications – A comprehensive breakdown of materials, finishes, furniture, and decor, carefully tailored to reflect your preferences and ensure design cohesion. This is inclusive of Paint and Wall Furnishings, Furniture, Art and Sculpture, Accessories and Decor, Decorative Accents, Door and Door Hardware, Window Furnishings, Flooring, Fixed and Non-Fixed Lighting, and Cabinetry and Hardware.
- Colour Palettes – Thoughtfully selected colour schemes that complement your space's design and reflect your unique personality, creating a harmonious and inviting atmosphere.
- Concept Boards – Inspiring visuals that bring your design concepts to life, translating your vision into tangible ideas that set the tone for your space.





# SIGNATURE SERVICES

## VIRTUAL INTERIOR STYLING

Your space deserves more than just functionality—it deserves to tell your story. Imagine your room as a canvas, ready to be brought to life with carefully curated art, decor, and accessories that reflect your individuality. My virtual interior styling service is designed to complete the vision you’ve begun, selecting the perfect details that elevate your space from good to extraordinary. Whether it’s fine-tuning a room in your home or completing your workspace, every piece is chosen with intention to evoke emotion and create harmony. Together, we’ll bring your space to life, making it a sanctuary that resonates deeply with your values and passions.

For creative entrepreneurs, your workspace is a direct extension of your brand identity—it should be as inspiring and purposeful as the work you do. My virtual styling service goes beyond aesthetics, helping you refine your workspace with pieces that speak to your brand’s values and message. With a focus on function and inspiration, I will guide you in selecting art, decor, and non-fixed lighting that seamlessly align with your professional identity. This tailored approach ensures your environment supports both your personal style and your business goals, empowering you to take ownership and bring your space to life with confidence.

## WHAT’S INCLUDED IN EACH PACKAGE

- Mood Boards – Curated visual representations that bring your styling vision to life, ensuring every element complements your space and aesthetic.
- Style Guide – A bespoke styling manual offering expert recommendations on how to layer textures, arrange decor, and achieve a cohesive, well-curated look.
- Specifications – A comprehensive selection of accessories, and decor, meticulously chosen to align with your style and existing interiors. This is inclusive of Art and Sculpture, Accessories and Decor, Decorative Accents, Non-Fixed Lighting, Visible Tableware, Servingware and Drinkware, Bedding and Linens, Rugs and Books.
- Tailored Advice – Personalised styling insights and expert recommendations to refine your space with confidence and clarity.
- Concept Boards – Inspiring visuals that translate your styling ideas into a cohesive scheme, guiding you towards a thoughtfully styled home or workspace.





# Curated Packages & Investment— *Virtual Interior Design*

**ROOM  
SIZE**

**ROOM  
OPTIONS**

**DESIGN  
FEES**

**SMALL SPACE**

With a wall length of 3 metres or less

- Small Bedroom
- Office/Study Nook
- Entry
- Hallway
- Dining/Breakfast Nook
- Small Living Room

\$5,500.00

**MEDIUM SPACE**

With a wall length greater than 3 metres and less than 4 metres

- Bedroom
- Home Office
- Study
- Dining Room
- Living Room
- Sitting Room

\$6,500.00

**LARGE SPACE**

With a wall length greater than 4 metres and less than 5 metres

- Primary Bedroom
- Workspace (Office)
- Large Dining Room
- Large Living Room

\$7,500.00

**OPEN PLAN SPACE**

With a wall length of 5 metres or more

- Dining Room/Living Room
- Great Room

\$10,500.00



# Curated Packages & Investment— *Virtual Interior Styling*

ROOM  
SIZE

ROOM  
OPTIONS

STYLING  
FEES

SMALL SPACE

With a wall length of 3 metres or less

- Small Bedroom
- Office/Study Nook
- Entry
- Hallway
- Dining/Breakfast Nook
- Small Living Room

\$3,500.00

MEDIUM SPACE

With a wall length greater than 3 metres and less than 4 metres

- Bedroom
- Home Office
- Study
- Dining Room
- Living Room
- Sitting Room

\$4,500.00

LARGE SPACE

With a wall length greater than 4 metres and less than 5 metres

- Primary Bedroom
- Workspace (Office)
- Large Dining Room
- Large Living Room

\$5,500.00

OPEN PLAN SPACE

With a wall length of 5 metres or more

- Dining Room/Living Room
- Great Room

\$8,500.00





# ADDITIONAL SERVICES

## VIRTUAL INTERIOR DESIGN

2D Perspective Images	\$2,500.00
2D Elevations	\$2,000.00
Photorealistic Renders	\$3,500.00
Additional Revisions One round	\$800.00

## VIRTUAL INTERIOR STYLING

Additional Revisions One round	\$800.00
-----------------------------------	----------



# Design Process

TAKE A PEEK AT MY PROCESS

## INITIAL INQUIRY & DISCOVERY CALL

Begin by filling out the Inquiry Form, followed by a 15-minute call to discuss your project in more detail and confirm that my services align with your needs.

## PURCHASE DESIGN PACKAGE

Once you've selected the design package that best suits your vision, you can secure your package by paying the fees in full.

## ONBOARDING

After securing your package, I will initiate the onboarding process, sending you forms, including the Project Questionnaire, to gather all the necessary details to begin crafting your vision. Expect clear communication, attention to detail and dedication to excellence throughout.

## PRE-PLANNING & SITE ANALYSIS

During this phase, I conduct a thorough review of your space based on the provided measurements, photos, and forms. We'll dive deep into understanding your lifestyle and how you use your space, discussing your daily routines, preferences, and any specific needs or challenges you may currently have. I'll create a custom floor plan to optimise furniture placement and functionality.

## DESIGN PROPOSAL

This phase outlines the project scope, goals, proposed budget, and a tailored spending strategy. One round of revisions is included.

## DESIGN CONCEPT

Curated mood boards and colour palettes will guide the design, and I'll present a selection of materials, finishes, furniture, décor, and accessories to ensure everything aligns with your vision. I will also consider lighting schemes, furniture placement, how people move around the space and the overall layout. One round of revisions is included.

## FINAL DESIGN SCHEME

I'll provide you with a comprehensive suite of professional design documents, including technical drawings and schedules, ensuring you have everything needed to bring your vision to life with ease.

## COMPLETION

Once the project is finalised, I'll send you an offboarding packet with aftercare information, product warranties, and further collaboration details.



# Styling Process

TAKE A PEEK AT MY PROCESS

## INITIAL INQUIRY & DISCOVERY CALL

Begin by completing the Inquiry Form, followed by a 15-minute consultation to discuss your styling needs and ensure my services align with your vision.

## PURCHASE STYLING PACKAGE

Once you've selected the package that best suits your space, secure your booking by completing the full payment.

## ONBOARDING

I'll guide you through the onboarding process, providing essential forms to gather key details about your space, style, and preferences. Expect clear communication, attention to detail and dedication to excellence throughout.

## PRE-PLANNING & SITE ANALYSIS

I conduct an in-depth review of your room's measurements, existing furniture, lighting, and decor, ensuring a holistic approach to your styling transformation. We'll take the time to explore your daily habits and how you interact with your space. Together, we'll talk through your preferences, routines, and any unique needs or challenges you might be facing.

## STYLING PROPOSAL

A comprehensive styling proposal outlining the project scope, goals and a tailored spending strategy, ensuring alignment before proceeding. One round of revisions is included.

## STYLING CONCEPT

Along with curating inspiration and mood boards, a selection of art, decor, soft furnishings, and accessories will be selected. Realistic concept boards will show the seamless blend of new additions with your existing interiors. One round of revisions is included.

## FINAL STYLING SCHEME

I will curate a fully developed styling plan, delivered through a suite of professional documents, including a bespoke styling guide, which will empower you to execute the design effortlessly.

## COMPLETION

Upon completion, you'll receive an offboarding packet with aftercare details, product warranties, and insights for future collaborations.



# PAYMENTS *and* COMMUNICATION

## PAYMENTS

To maintain a seamless and focused collaboration, full payment is required upon purchase. This payment structure not only ensures clarity and commitment but also fosters a collaborative partnership throughout the design process, allowing us to move forward with confidence and purpose.

## OFFICE HOURS

My office hours are Monday to Friday, from 8:30 AM to 3:00 PM AEST. Please note that I do not respond to emails outside of these hours, including weekends and public holidays. This schedule allows me to give my full attention to each project during designated working times.

## COMMUNICATION

To facilitate transparent and efficient project management, I use a collaborative platform that ensures you are always in the loop. I also send weekly updates via email, keeping you informed on progress, new developments, and addressing any questions or concerns you may have. This dual approach ensures you feel engaged and well-informed at every stage of the journey.

## EXPECTATIONS

Your timely and constructive feedback is highly valued. Adhering to agreed timelines allows us to maintain momentum, ensuring a smooth process and exceptional outcomes. This mutual respect for time and feedback is key to creating a design experience that is as seamless as it is successful.



# FAQ

## DESIGN PROCESS AND COLLABORATION

Nº1

CAN YOU PROVIDE DESIGN SERVICES FOR MORE THAN ONE ROOM AT A TIME?

Yes, I'm happy to design multiple rooms at once. Simply add the necessary number of design packages to your cart when purchasing.

Nº3

CAN YOU INCORPORATE EXISTING FURNITURE?

Absolutely! I value the meaningful pieces you already own. During the Project Questionnaire, we'll discuss which items to incorporate, ensuring they're seamlessly integrated into your new design.

Nº5

CAN I PROVIDE MY OWN INPUT INTO THE DESIGN?

Absolutely! Your input is crucial. I'll work closely with you, listening to your vision and incorporating your ideas into the design. My goal is to create a space that's a true reflection of your style and needs.

Nº7

WHAT HAPPENS AFTER I RECEIVE MY FINAL DESIGN SCHEME?

Once you receive your final design, you'll have all the tools and guidance necessary to bring your vision to life. From ordering furnishings to coordinating with trades, you'll be poised to transform your space. For flawless execution, I recommend collaborating with trusted professionals.

Nº2

ARE YOU ABLE TO PROVIDE HELP WITH A FEW THINGS IN DIFFERENT ROOMS INSTEAD OF A FULL ROOM?

My virtual interior design services focus exclusively on individual rooms, ensuring each space is thoughtfully crafted with the attention and detail it deserves.

Nº4

WHAT INFORMATION DO I NEED TO PROVIDE?

When your project begins, I'll ask for the following details: Project Questionnaire, Site Evaluation, Pinterest Inspiration Board, Site Measurements & Floor Plan, and High-Quality Photographs.

Nº6

WHAT IF I DON'T LIKE THE DESIGN?

I prioritise clear communication to avoid any surprises. Working in stages, I'll seek your approval and feedback before moving forward, ensuring your voice shapes every part of the design.



# FAQ

## STYLING AND PERSONALISATION

Nº8

AM I ABLE TO GET VIRTUAL STYLING FOR A ROOM THAT IS NOT YET FULLY FURNISHED OR COMPLETED?

To get the most out of my luxury virtual interior styling service, the room should already be fully furnished, including paint, wall treatments, flooring, and window coverings. This service focuses on the final touches – art, accessories, and decor. Accurate dimensions of existing furniture are essential for me to make the right styling choices for your space.

Nº10

CAN I REQUEST CHANGES OR REVISIONS TO THE STYLING PACKAGE ONCE IT'S COMPLETE?

If your preferences or circumstances change after the package is complete, don't worry – we can discuss how to make the necessary adjustments. I'm here to help ensure your space remains aligned with your evolving needs. Additional fees will apply, depending on the scope of the changes.

Nº9

DO YOU WORK WITH SPECIFIC BRANDS OR ITEMS?

I work with a wide range of brands and items to ensure the best fit for your space. If there are particular brands or specific items you prefer, please let me know, and I will do my best to incorporate them into your virtual interior styling package.

Nº11

HOW DO I ENSURE THE FINAL LOOK STAYS TRUE TO MY PERSONAL STYLE?

My process is centred around understanding your unique preferences and lifestyle. From our first consultation to the final styling scheme, your input is prioritised every step of the way. I provide expert guidance, ensuring the finished space is a true reflection of your style and designed to enhance your daily life.



# FAQ

## LOGISTICS AND PROJECT DETAILS

Nº12

HOW LONG DOES THE DESIGN AND STYLING PROCESS TAKE?

For Virtual Interior Design, the typical timeline is 18 weeks, and for Virtual Interior Styling, it's usually around 14 weeks. However, each project is tailor-made to meet your specific requirements, and as such, project completion times can vary.

Nº14

WHAT BUDGET SHOULD I PLAN FOR DESIGNING OR STYLING MY ROOM?

To ensure lasting beauty and quality, I typically recommend a budget of \$20,000 - \$25,000 per room for virtual interior design. For virtual interior styling, I recommend allocating \$8,000 to \$10,000 per room to achieve a cohesive, luxury interior. These estimates exclude trades, service fees, and custom items. At the outset, we'll assess your budget and create a bespoke spending strategy that aligns with your vision.

Nº16

ARE YOU ABLE TO RECOMMEND CONTRACTORS OR TRADES OR OBTAIN QUOTES FOR CUSTOM ITEMS?

No, my services do not include recommending, obtaining quotes, or engaging third-party contractors, tradespersons, or any design industry professionals. I also do not provide quotes for custom-made items or renovation costs.

Nº13

DO YOU PROVIDE VIRTUAL DESIGN OR STYLING SERVICES OUTSIDE AUSTRALIA?

Currently, my virtual services are offered exclusively within Australia, where my expertise is tailored to the specific needs and nuances of clients in this region.

Nº15

WHAT TYPE OF SPACES CAN BE DESIGNED VIRTUALLY?

My services can be utilised to transform most spaces, including the Primary Bedroom, Living Room, Dining Room, Office, Study, Entry, and Hallway. I do not offer virtual services for Kitchens and Butler's Pantries, Bathrooms and Powder Rooms, Laundries and Mudrooms, or other highly functional spaces. These areas are better suited for in-person design services.

# PORTFOLIO

## CRAFTING TIMELESS SPACES: WHERE DESIGN MEETS PURPOSE

Each space is an opportunity—a chance to blend beauty, functionality, and personal expression. I believe interiors should not only be visually captivating but should also nurture, inspire, and reflect the unique stories of those who inhabit them. Through a refined curation of form, colour, texture, and scale, I create spaces that go beyond aesthetics to evoke emotions, elevate everyday experiences, and seamlessly align with the way you live.

My design philosophy draws on a deep understanding of comprehensive design principles, enabling me to craft spaces that are both artistic and practical. Whether designing a layout, creating a bespoke lighting plan, or advising on finishes, I approach each detail with purpose. I carefully select furnishings, textiles, art, and accessories, and incorporate expert spatial planning to ensure cohesion and functionality.

Each project is a chance to shape an environment that transcends expectations—where every detail, from the thoughtful selection of colours rooted in psychological principles to the precise arrangement of furnishings, contributes to a cohesive and meaningful whole. My goal is to craft spaces that not only reflect the distinctive character of those who inhabit them but also stand as timeless and enduring sanctuaries, offering both beauty and functionality for generations to come.



PROJECT №1 / HERITAGE MEETS CONTEMPORARY

# Victorian Terrace

YEAR

2024

TYPE

Renovation

This project involved the complete redesign of a freestanding two-storey Victorian-era terrace, blending contemporary needs with the historical character of the building. The design was tailored for a young family, with a primary focus on creating spaces that would nurture their lifestyle and foster connection, all while preserving the home’s heritage.

The ground floor extension introduces a North-facing open-plan kitchen and dining space that invites an abundance of natural light and ventilation. This layout not only meets the functional demands of a modern family but also preserves the spirit of the original architecture. A second casual living room and study are cleverly integrated into the adjacent space, allowing family members to engage in daily tasks while remaining in close proximity to one another.

A newly added laundry with external access, along with a strategically placed water closet beneath the stairs, optimises both convenience and space. The main living room, located at the front of the house, exudes both grandeur and comfort, providing a sense of welcome as one enters the home.

Upstairs, the design reflects a clear vision for family living with a luxury master bedroom suite that includes an ensuite and walk-in robe. Two additional bedrooms are located at the front and rear, complemented by a full bathroom, while an abundance of windows and skylights enhances natural light throughout the home.





Lighting Scheme

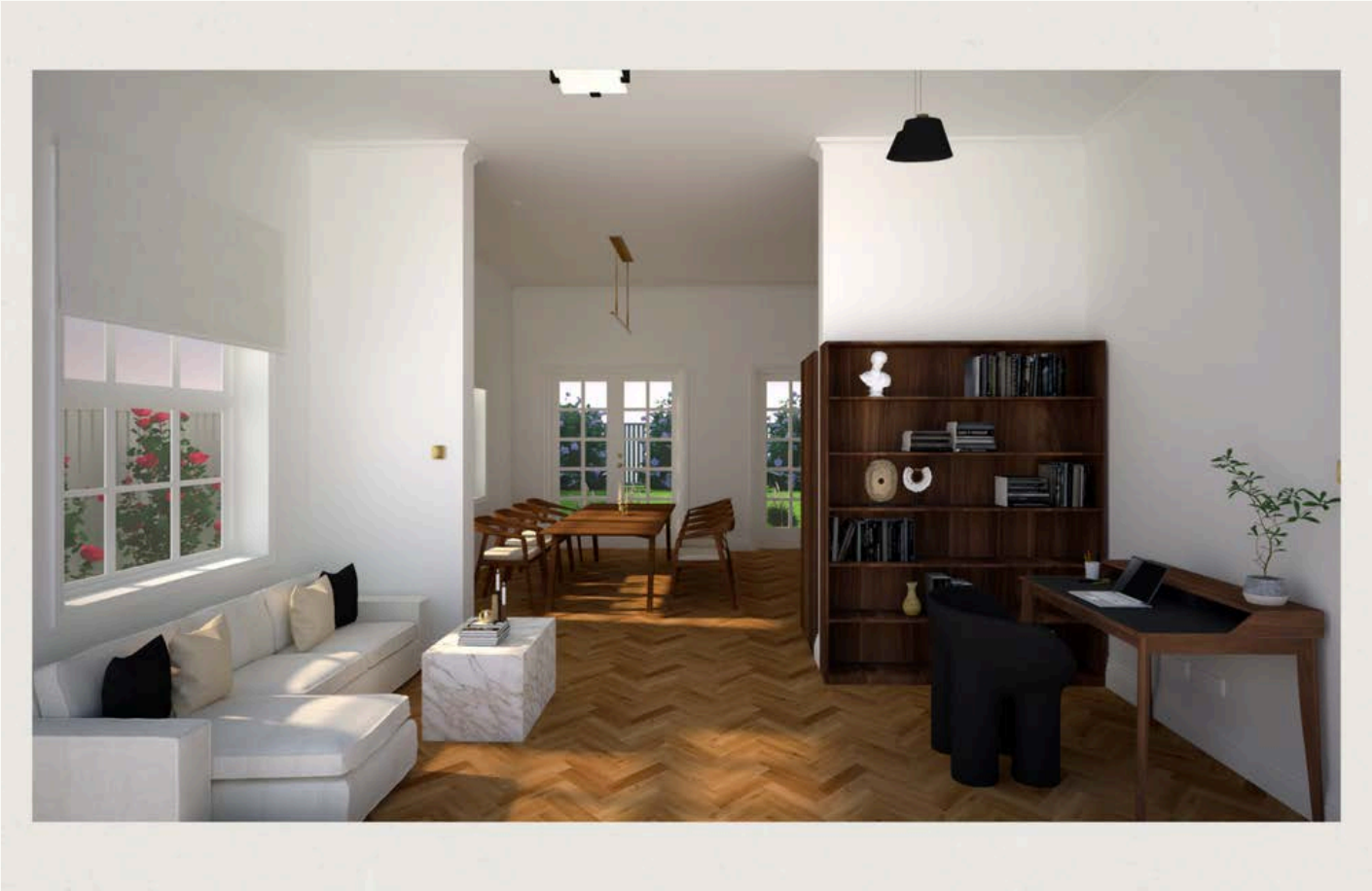


# Examples of My Work



2D Perspective Images

2D Perspective Images



Photorealistic Render





## KEY DESIGN FEATURES

- The open-plan kitchen features a galley-style layout, incorporating state-of-the-art appliances and a marble island with seating for three. This is complemented by a solid walnut dining table that comfortably accommodates 8-10 people, seamlessly transitioning from informal to formal settings.
- The informal living room and study are thoughtfully designed to cater to the family's needs. Custom walnut bookshelves and a vintage desk provide a functional workspace for the children, while the adjacent living area offers a comfortable and airy space for relaxation, with a large sliding window enhancing airflow and light.
- The second bedroom, designed for a five-year-old, offers a neutral colour palette and flexible, non-fixed storage solutions that will evolve with her needs over time. The room is flooded with natural light from a new sliding window, complemented by stylish drapery and temperature-regulating shades.
- A curated lighting plan features a mix of mid-century and contemporary fixtures, including pendants, downlights, sconces, and ceiling mounts in materials like brass, alabaster, and glass, complementing the design's finishes and creating a harmonious atmosphere.

## A VISION REALISED

Through an integration of thoughtful spatial planning, careful material selection, and attention to light and airflow, this home was transformed into a timeless and functional sanctuary for a modern family, while respecting the integrity of its Victorian origins. The design harmoniously balances contemporary comfort with the enduring charm of the past, creating a lasting environment for this family to thrive.



PROJECT №2 / CONTEMPORARY

Design Studio

YEAR

2024

TYPE

Renovation

This project involved the transformation of a compact studio space into a fully functional, professional environment for interior design work. The goal was to create an efficient yet aesthetically pleasing workspace that promotes the health and wellbeing of the individuals using it, all while reflecting the business's ethos and design sensibilities.

The layout was carefully planned to incorporate distinct zones, ensuring a seamless workflow while maintaining a sense of openness and connection. The studio features separate areas for two designers to work, as well as designated spaces for informal and formal meetings with clients, along with ample storage solutions for design materials, samples, and books.

Custom cabinetry maximises storage space, housing an extensive design library and essential office equipment. The kitchen, compact yet functional, includes a breakfast bar for casual dining. With the added challenge of working within a fixed footprint, internal walls were strategically added to create separate zones while ensuring the space remains cohesive and versatile.





FLOOR PLAN



COMMERCIAL OFFICE

INTERNAL / 6000 x 6480 EXTERNAL / N/A

ELIZABETH DAVIS

2D Floor Plan







Sample Board



Examples of My Work

2D Perspective Images

FFE Schedule

<p><b>OFFICE CHAIR</b> BARRE REPUBLIC LEATHER OFFICE CHAIR / TEMPLE &amp; WEBSTER / TPW1070</p>  <table><tr><td>MATERIALS</td><td>PLYWOOD WITH WALNUT VENEER POLISHED ALUMINIUM CHROME &amp; FALSA LEATHER</td></tr><tr><td>DIMENSIONS</td><td>W: 700 x D: 640 x H: 1000</td></tr><tr><td>COLOR</td><td>BLACK &amp; WALNUT</td></tr><tr><td>PATTERN</td><td>N/A</td></tr><tr><td>QUANTITY</td><td>1</td></tr><tr><td>COST</td><td>\$6400.00</td></tr><tr><td>LINK</td><td>BARRE REPUBLIC LEATHER OFFICE CHAIR</td></tr></table>	MATERIALS	PLYWOOD WITH WALNUT VENEER POLISHED ALUMINIUM CHROME & FALSA LEATHER	DIMENSIONS	W: 700 x D: 640 x H: 1000	COLOR	BLACK & WALNUT	PATTERN	N/A	QUANTITY	1	COST	\$6400.00	LINK	BARRE REPUBLIC LEATHER OFFICE CHAIR	<p><b>CHAIR</b> ELM HARDWOOD DINING CHAIR / B&amp;C FURNITURE / SOCEW02</p>  <table><tr><td>MATERIALS</td><td>NALAYAN RUBBERWOOD</td></tr><tr><td>DIMENSIONS</td><td>W: 540 x D: 540 x H: 760</td></tr><tr><td>COLOR</td><td>BENGE &amp; WALNUT</td></tr><tr><td>PATTERN</td><td>N/A</td></tr><tr><td>QUANTITY</td><td>2</td></tr><tr><td>COST</td><td>\$3800.00</td></tr><tr><td>LINK</td><td>ELM HARDWOOD DINING CHAIR</td></tr></table>	MATERIALS	NALAYAN RUBBERWOOD	DIMENSIONS	W: 540 x D: 540 x H: 760	COLOR	BENGE & WALNUT	PATTERN	N/A	QUANTITY	2	COST	\$3800.00	LINK	ELM HARDWOOD DINING CHAIR
MATERIALS	PLYWOOD WITH WALNUT VENEER POLISHED ALUMINIUM CHROME & FALSA LEATHER																												
DIMENSIONS	W: 700 x D: 640 x H: 1000																												
COLOR	BLACK & WALNUT																												
PATTERN	N/A																												
QUANTITY	1																												
COST	\$6400.00																												
LINK	BARRE REPUBLIC LEATHER OFFICE CHAIR																												
MATERIALS	NALAYAN RUBBERWOOD																												
DIMENSIONS	W: 540 x D: 540 x H: 760																												
COLOR	BENGE & WALNUT																												
PATTERN	N/A																												
QUANTITY	2																												
COST	\$3800.00																												
LINK	ELM HARDWOOD DINING CHAIR																												
<p><b>CHAIR</b> MADRID LIVING CHAIR / BLACK MANGO / SKU100732N</p>  <table><tr><td>MATERIALS</td><td>SOLID OAK FABRIC TON POLYESTER 100% LINEN 20% VISCOSE</td></tr><tr><td>DIMENSIONS</td><td>W: 600 x D: 560 x H: 940</td></tr><tr><td>COLOR</td><td>WHITE</td></tr><tr><td>PATTERN</td><td>N/A</td></tr><tr><td>QUANTITY</td><td>6</td></tr><tr><td>COST</td><td>\$6500.00</td></tr><tr><td>LINK</td><td>MADRID LIVING CHAIR</td></tr></table>	MATERIALS	SOLID OAK FABRIC TON POLYESTER 100% LINEN 20% VISCOSE	DIMENSIONS	W: 600 x D: 560 x H: 940	COLOR	WHITE	PATTERN	N/A	QUANTITY	6	COST	\$6500.00	LINK	MADRID LIVING CHAIR	<p><b>OFFICE CHAIR</b> BENTWOOD EXECUTIVE OFFICE CHAIR / TEMPLE &amp; WEBSTER / TPW12036</p>  <table><tr><td>MATERIALS</td><td>PLYWOOD WITH WALNUT VENEER POLISHED ALUMINIUM CHROME &amp; FALSA LEATHER</td></tr><tr><td>DIMENSIONS</td><td>W: 700 x D: 640 x H: 1000</td></tr><tr><td>COLOR</td><td>BLACK &amp; WALNUT</td></tr><tr><td>PATTERN</td><td>N/A</td></tr><tr><td>QUANTITY</td><td>1</td></tr><tr><td>COST</td><td>\$6500.00</td></tr><tr><td>LINK</td><td>BENTWOOD EXECUTIVE OFFICE CHAIR</td></tr></table>	MATERIALS	PLYWOOD WITH WALNUT VENEER POLISHED ALUMINIUM CHROME & FALSA LEATHER	DIMENSIONS	W: 700 x D: 640 x H: 1000	COLOR	BLACK & WALNUT	PATTERN	N/A	QUANTITY	1	COST	\$6500.00	LINK	BENTWOOD EXECUTIVE OFFICE CHAIR
MATERIALS	SOLID OAK FABRIC TON POLYESTER 100% LINEN 20% VISCOSE																												
DIMENSIONS	W: 600 x D: 560 x H: 940																												
COLOR	WHITE																												
PATTERN	N/A																												
QUANTITY	6																												
COST	\$6500.00																												
LINK	MADRID LIVING CHAIR																												
MATERIALS	PLYWOOD WITH WALNUT VENEER POLISHED ALUMINIUM CHROME & FALSA LEATHER																												
DIMENSIONS	W: 700 x D: 640 x H: 1000																												
COLOR	BLACK & WALNUT																												
PATTERN	N/A																												
QUANTITY	1																												
COST	\$6500.00																												
LINK	BENTWOOD EXECUTIVE OFFICE CHAIR																												
<p><b>BARSTOOL</b> UTILITY BAR STOOL / LIVING EDGE / SKU1009720</p>  <table><tr><td>MATERIALS</td><td>SOLID WOOD STAINLESS STEEL FABRIC LEATHER</td></tr><tr><td>DIMENSIONS</td><td>W: 380 x D: 380 x H: 750</td></tr><tr><td>COLOR</td><td>BLACK &amp; WALNUT</td></tr><tr><td>PATTERN</td><td>N/A</td></tr><tr><td>QUANTITY</td><td>2</td></tr><tr><td>COST</td><td>\$1500.00</td></tr><tr><td>LINK</td><td>UTILITY BAR STOOL</td></tr></table>	MATERIALS	SOLID WOOD STAINLESS STEEL FABRIC LEATHER	DIMENSIONS	W: 380 x D: 380 x H: 750	COLOR	BLACK & WALNUT	PATTERN	N/A	QUANTITY	2	COST	\$1500.00	LINK	UTILITY BAR STOOL	<p><b>ARMCHAIR</b> INGRID SHERRA ARMCHAIR / CASTLEBY / SKU N/A</p>  <table><tr><td>MATERIALS</td><td>PLYWOOD SOLID RUBBER WOOD WITH OAK VENEER FABRIC 100% POLYESTER</td></tr><tr><td>DIMENSIONS</td><td>W: 700 x D: 540 x H: 740</td></tr><tr><td>COLOR</td><td>TEDDY WHITE &amp; OAK</td></tr><tr><td>PATTERN</td><td>N/A</td></tr><tr><td>QUANTITY</td><td>2</td></tr><tr><td>COST</td><td>\$7900.00</td></tr><tr><td>LINK</td><td>INGRID SHERRA ARMCHAIR</td></tr></table>	MATERIALS	PLYWOOD SOLID RUBBER WOOD WITH OAK VENEER FABRIC 100% POLYESTER	DIMENSIONS	W: 700 x D: 540 x H: 740	COLOR	TEDDY WHITE & OAK	PATTERN	N/A	QUANTITY	2	COST	\$7900.00	LINK	INGRID SHERRA ARMCHAIR
MATERIALS	SOLID WOOD STAINLESS STEEL FABRIC LEATHER																												
DIMENSIONS	W: 380 x D: 380 x H: 750																												
COLOR	BLACK & WALNUT																												
PATTERN	N/A																												
QUANTITY	2																												
COST	\$1500.00																												
LINK	UTILITY BAR STOOL																												
MATERIALS	PLYWOOD SOLID RUBBER WOOD WITH OAK VENEER FABRIC 100% POLYESTER																												
DIMENSIONS	W: 700 x D: 540 x H: 740																												
COLOR	TEDDY WHITE & OAK																												
PATTERN	N/A																												
QUANTITY	2																												
COST	\$7900.00																												
LINK	INGRID SHERRA ARMCHAIR																												

3D RENDERS

COMMERCIAL OFFICE



3D RENDERS

Custom floor-to-ceiling enclosed cupboards measuring five metres in length provide abundant storage for the design library which houses all product samples as well as catalogues, books and design tools.

Internal walls have been added or extended to delineate separate spaces for the Formal and Informal Meeting Areas and the Principal's and Employee's Offices.

The Kitchen includes a small breakfast bar with seating for use during meal times.

IZABETH DA  
INTERIOR DESIGNER







## KEY DESIGN FEATURES

- A formal meeting area with a neutral colour palette, featuring an oak dining table and mid-century-style chairs beneath a pendant light, creating a welcoming environment for client meetings.
- A custom-designed, five-metre-long design library with floor-to-ceiling cupboards, storing product samples, catalogues, design tools, and books.
- An employee's office, designed with an oak desk and mid-century-style chair, complemented by a custom internal wall that provides privacy and houses office equipment such as a printer/scanner/copier.
- An informal meeting area with low-slung chairs and a glass coffee table, featuring textural plaster on the walls and ceiling to add elegance to the space.
- A principal's office with a semi-enclosed layout, featuring a Tulip Dining Table as the desk and framed mid-century photographs, complemented by custom storage showcasing a collection of interior design books and decor.
- A compact kitchen with black cabinetry, bold Domino Quartzite with sweeping veining, and a small breakfast bar for casual dining.
- A lighting plan combining mid-century and contemporary luminaires, including pendants, downlights, spotlights, and lamps, in materials like aluminium, steel, and iron, with a monochromatic colour palette of black, white, and gesso.

## A VISION REALISED

The studio design successfully balances functionality with aesthetic refinement, creating a versatile and inspiring environment that fosters creativity and collaboration. Through thoughtful spatial planning, the use of high-quality materials, and a focus on natural light and wellbeing, this studio serves as a dynamic and comfortable space for all design work.



NEXT

STEPS

**THANK YOU**

Thank you for exploring my work – I hope you're inspired by the possibilities we can create together. Whether you're seeking a sanctuary at home or a workspace that fuels your professional success, I'm here to bring your vision to life. Let's create a space that nurtures who you are, inside and out.

**HOW TO  
BOOK YOUR  
PROJECT**

Fill out the Inquiry Form on my website to share your vision, and from there, we'll craft a personalised design plan tailored to your needs.

You can also head directly to my Virtual Interior Design and Virtual Interior Styling pages to book your project online and get started right away.



# ELIZABETH DAVIS

## GET IN TOUCH

WEBSITE: ELIZABETHDAVIS.COM.AU  
INSTAGRAM: @ELIZABETHDAVISDESIGN\_  
PINTEREST: @ELIZABETHDAVISDESIGN\_

## COPYRIGHT

Copyright © 2025 Elizabeth Davis. All rights reserved.

This document is the intellectual property of Elizabeth Davis. No part of this guide may be reproduced, distributed, or shared in any form without prior written consent.

