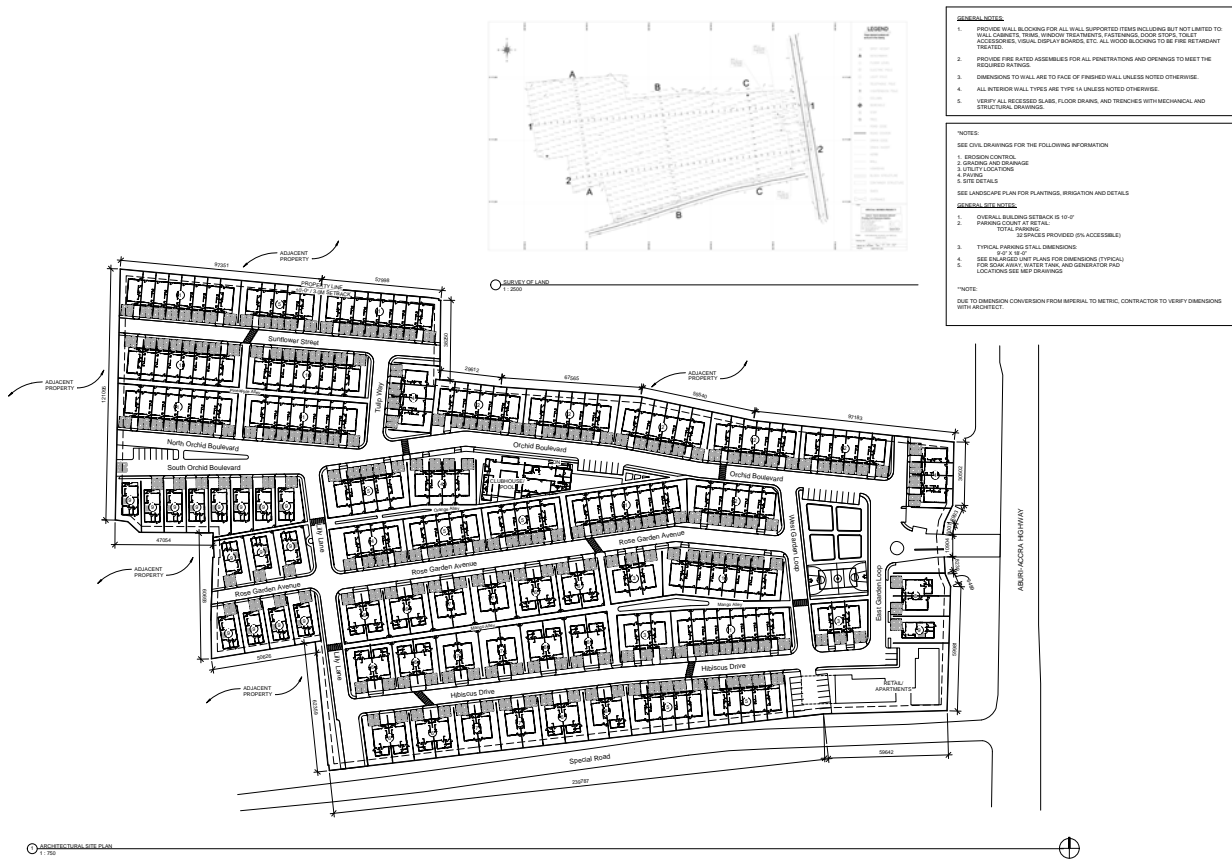


KORANTEMMAA LARBI

PORTFOLIO

PROJECTS



Size: 20-Acre Residential Development
Structure: Concrete, CMU
Finishes: Paint, Porcelain tiles, Metal, Wood
Description: 250 Townhome development + 30 Condos with Retail and Social Amenities

SPECIAL GARDENS, ACCRA, GHANA

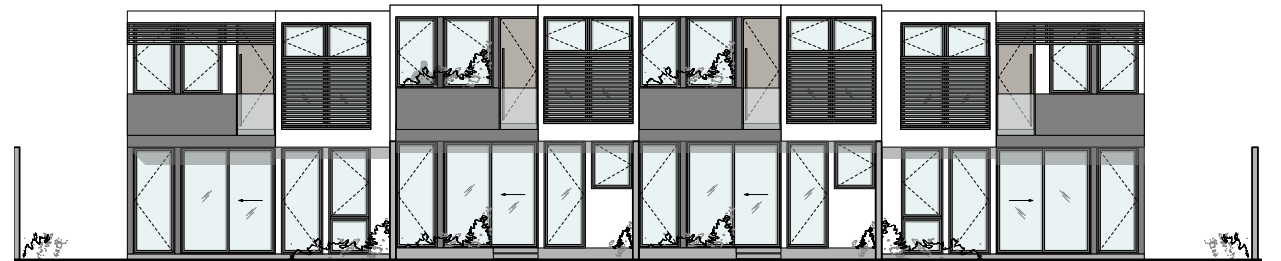
ACTIVITIES: DESIGN ARCHITECT IN COLLABORATION WITH INFINITE GROUP LTD. | MASTERPLANNING |
DESIGN OF RESIDENCE TYPOLOGIES | FINISH & FIXTURE SPECIFICATIONS | QA/QC CD SET



RENDERING BY ARCHIBIM INC



1 4-STICK BLOCK PLAN
Scale: 3/16" = 1'-0"



1 4-STICK BLOCK ELEVATION
Scale: 3/16" = 1'-0"



SPECIAL GARDENS, ACCRA, GHANA

AERIAL VIEW | PHOTOGRAPH BY SPECIAL GARDENS

EXTERIOR VIEW | PHOTOGRAPH BY SPECIAL GARDENS

SPECIAL GARDENS, ACCRA, GHANA



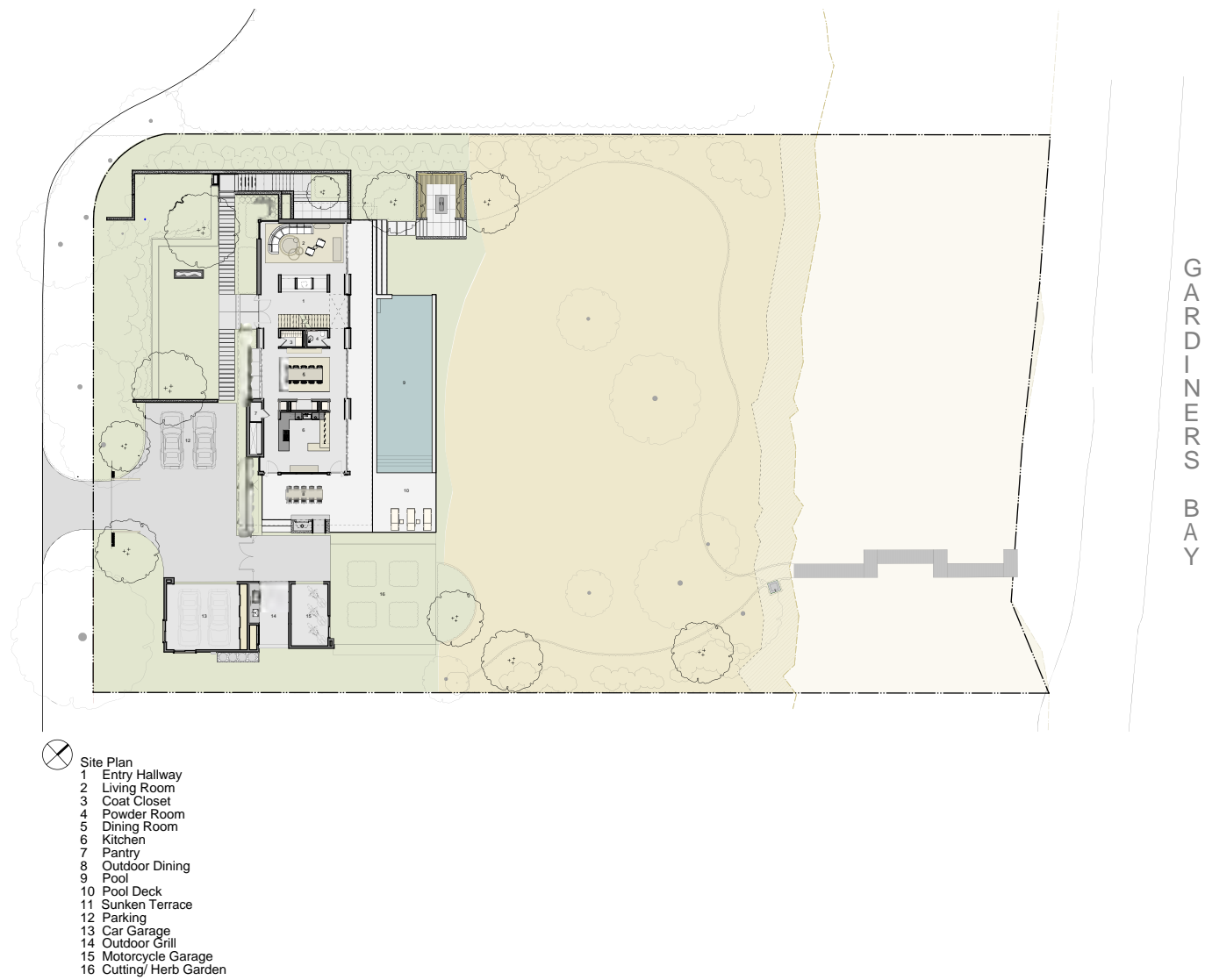
SPECIAL GARDENS, ACCRA, GHANA

INTERIOR VIEW | PHOTOGRAPH BY SPECIAL GARDENS



INTERIOR VIEW | PHOTOGRAPH BY SPECIAL GARDENS

SPECIAL GARDENS, ACCRA, GHANA



Size: 5,793 SQ FT
Structure: Concrete, Steel, Wood Framing
Finishes: Concrete, Wood, Natural Stone, Sheetrock, Man-made Tiles
Description: New Construction of a Summer Vacation House

HEDGES BANKS RESIDENCE, HAMPTONS, NY
WITH STELLE LOMONT ROUHANI ARCHITECTS
ACTIVITIES: INTERIORS PROJECT MANAGER & ARCHITECT | DESIGN DEVELOPMENT | CONSTRUCTION DOCUMENTS | CONTRACT ADMINISTRATION

PHOTOGRAPH BY MATT CARBONE



HEDGES BANKS RESIDENCE, HAMPTONS, NY LIVING ROOM | PHOTOGRAPH BY MATT CARBONE

DINING ROOM | PHOTOGRAPH BY MATT CARBONE HEDGES BANKS RESIDENCE, HAMPTONS, NY



HEDGES BANKS RESIDENCE, HAMPTONS, NY FAMILY ROOM | PHOTOGRAPH BY MATT CARBONE



FAMILY ROOM | PHOTOGRAPH BY MATT CARBONE HEDGES BANKS RESIDENCE, HAMPTONS, NY



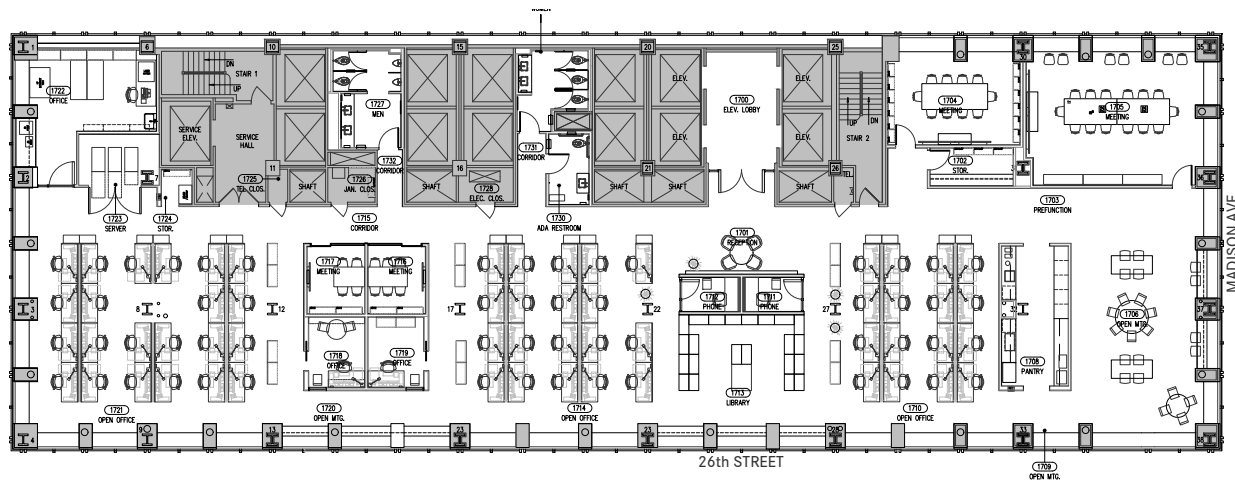
HEDGES BANKS RESIDENCE, HAMPTONS, NY GUEST ROOM | PHOTOGRAPH BY MATT CARBONE

GUEST ROOM | PHOTOGRAPH BY MATT CARBONE HEDGES BANKS RESIDENCE, HAMPTONS, NY



HEDGES BANKS RESIDENCE, HAMPTONS, NY GUEST ROOM | PHOTOGRAPH BY MATT CARBONE

UPPER DECK | PHOTOGRAPH BY MATT CARBONE HEDGES BANKS RESIDENCE, HAMPTONS, NY

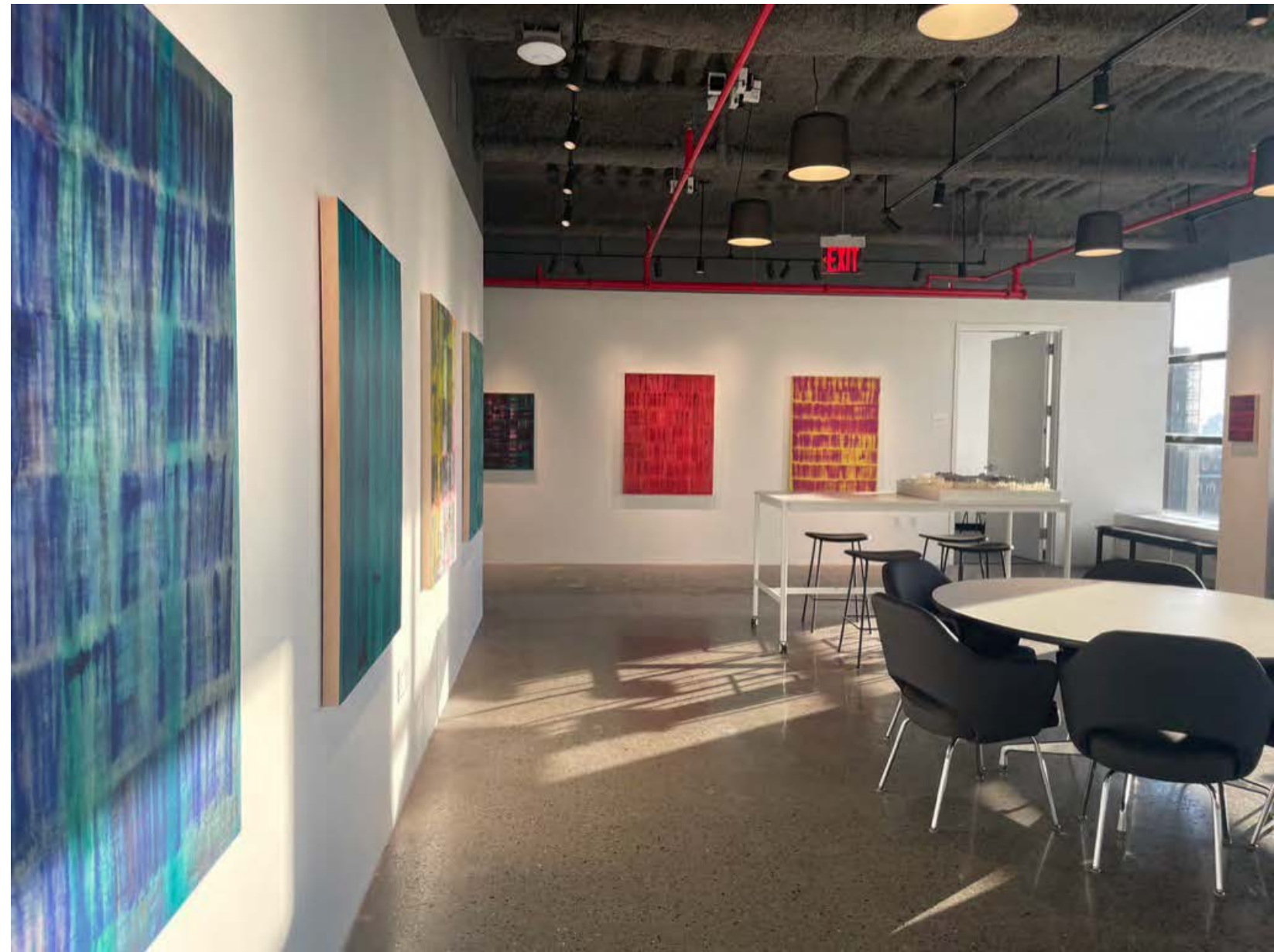


Size: 13,000 SQ FT

Structure: Steel, Concrete, Metal Framing

Finishes: Polished Concrete, Carpet, Porcelain tile, Resilient tile

Description: Gut-renovation and fit-out of TenBerke Architect's new home.

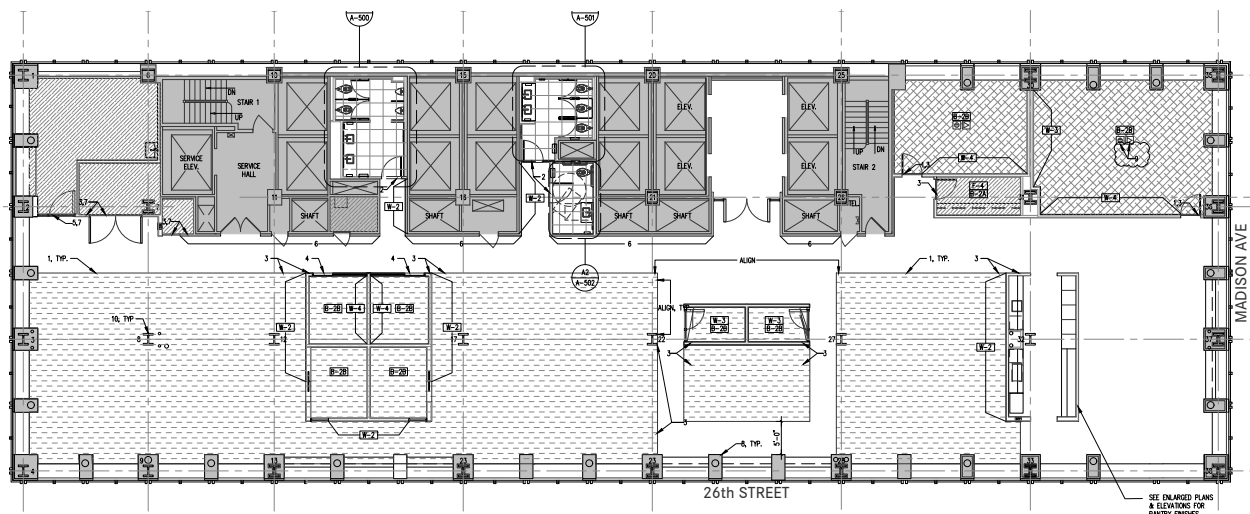


TENBERKE OFFICE, NEW YORK, NY

WITH TENBERKE ARCHITECTS

ACTIVITIES: PROJECT MANAGER & ARCHITECT | DESIGN | DETAILING | CONSULTANT COORDINATION | SPECIFICATIONS |
BID REVIEW | SUBMITTALS |

THIS AND SUBSEQUENT PHOTOGRAPHS BY KORANTEMMAA LARBI



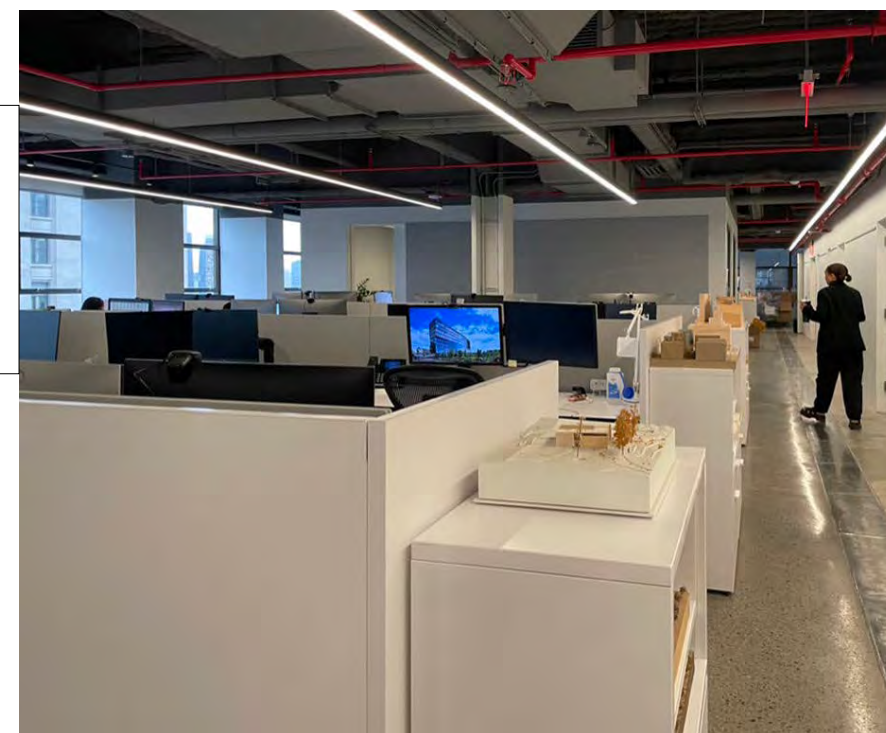
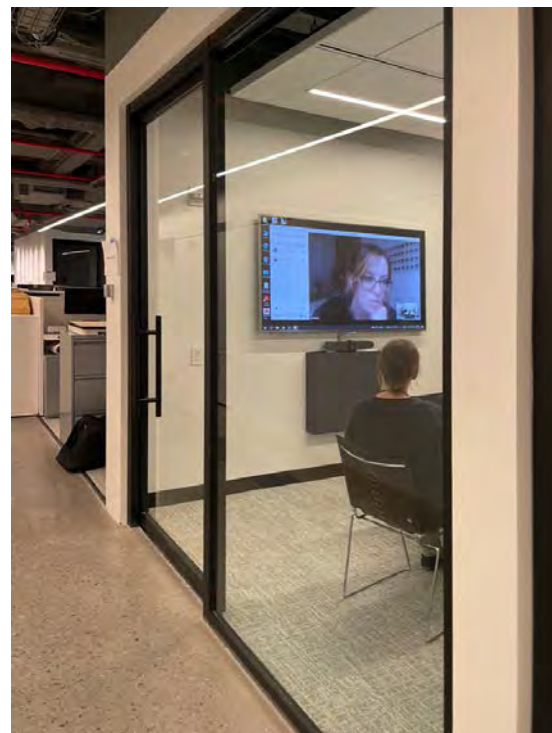
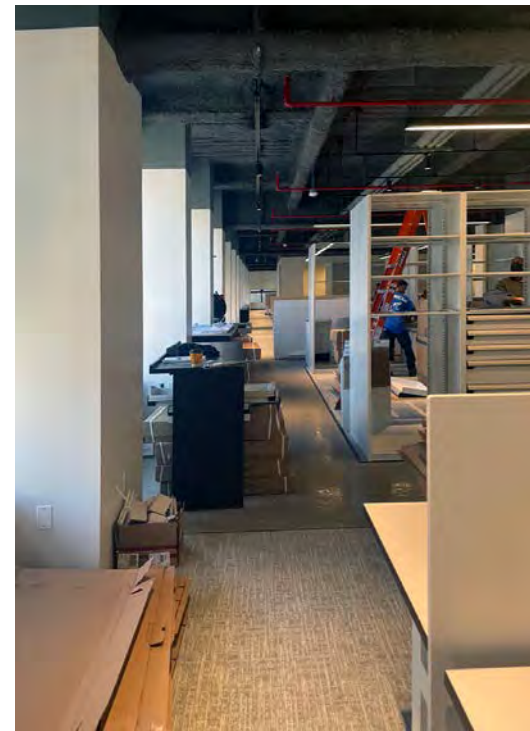
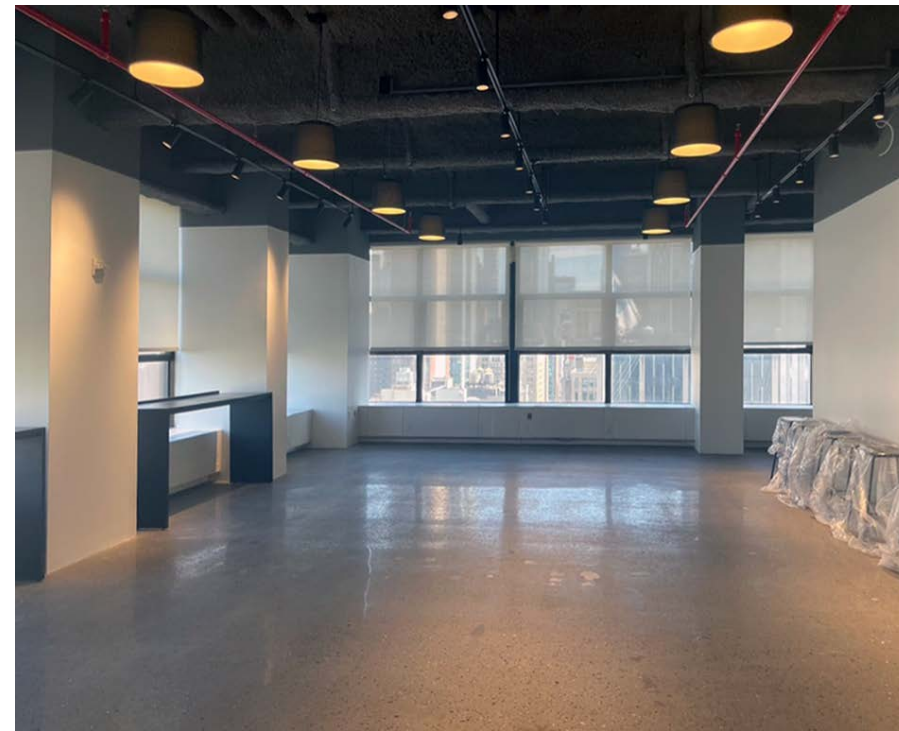
TENBERKE OFFICE, NEW YORK, NY

FINISH PLAN



GALLERY LOOKING TOWARDS OPEN OFFICES & ENTRY

TENBERKE OFFICE, NEW YORK, NY

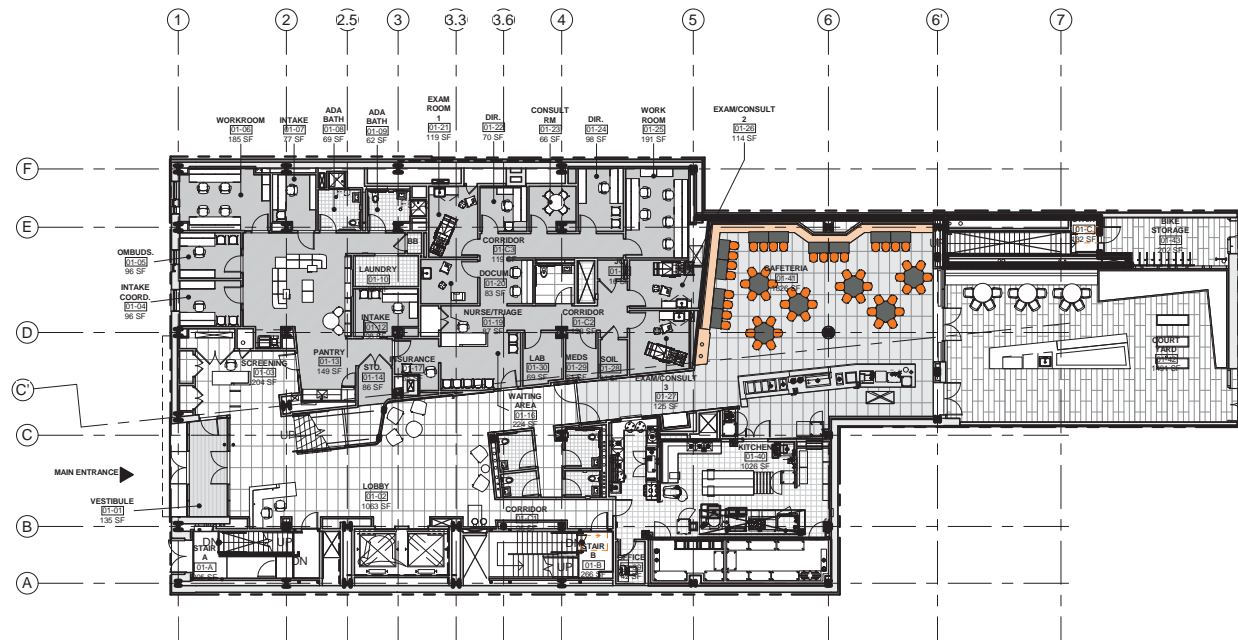


TENBERKE OFFICE, NEW YORK, NY

IN PROGRESS PHOTOS

IN PROGRESS PHOTOS

TENBERKE OFFICE, NEW YORK, NY



Size: 80,000 SQ FT

Structure: Brick, Concrete, Steel, Metal Framing

Finishes: Wood, Porcelain tile, Resilient tile

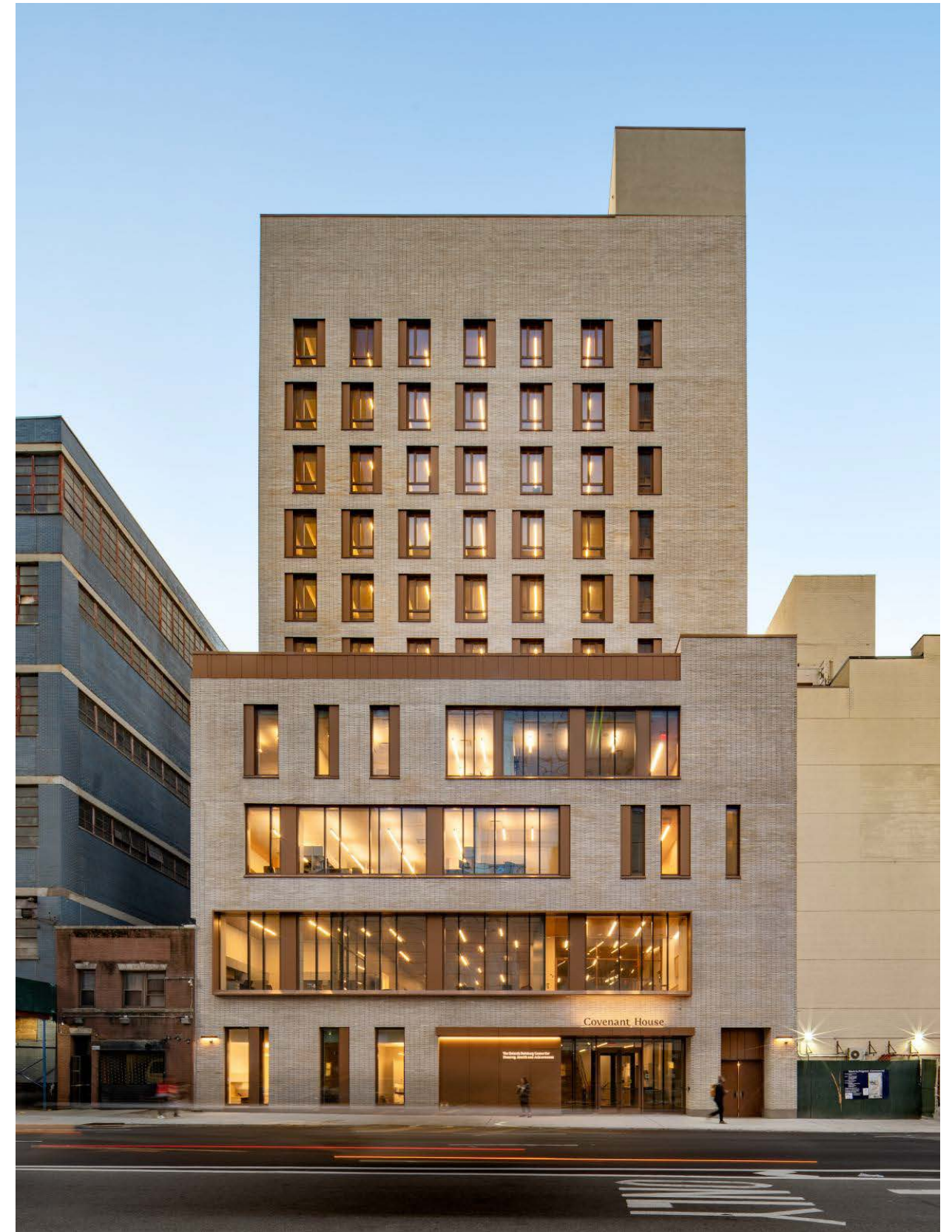
Description: New building to provide shelter and services for 120 vulnerable youth

Mentions: world-architects.com US Building of the Week July 25, 2022

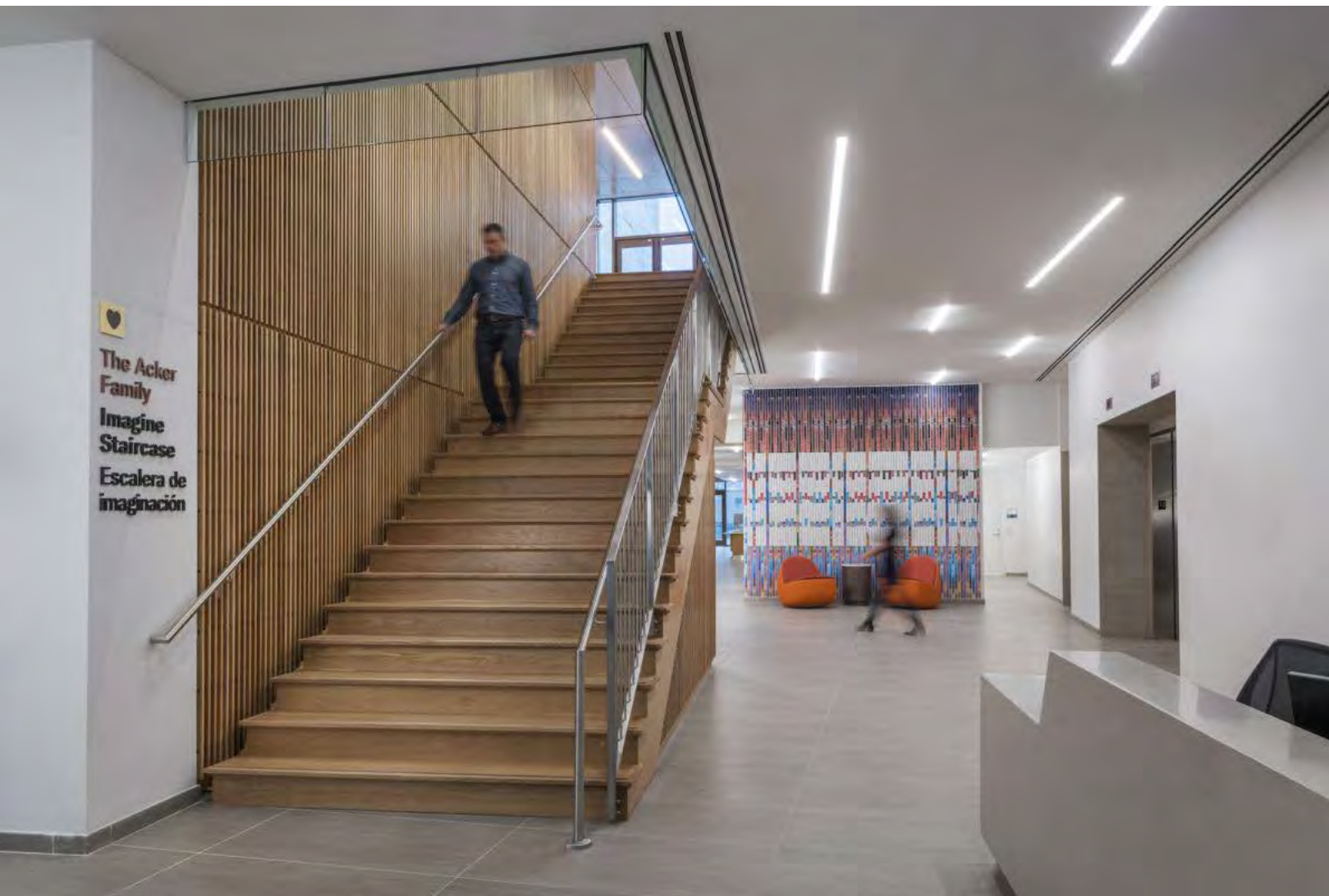
COVENANT HOUSE, NEW YORK, NY

WITH FXCOLLABORATIVE

ACTIVITIES: INTERIORS PROJECT ARCHITECT | FURNITURE & MATERIAL SPECIFICATIONS |



PHOTOGRAPH BY CHRIS COOPER



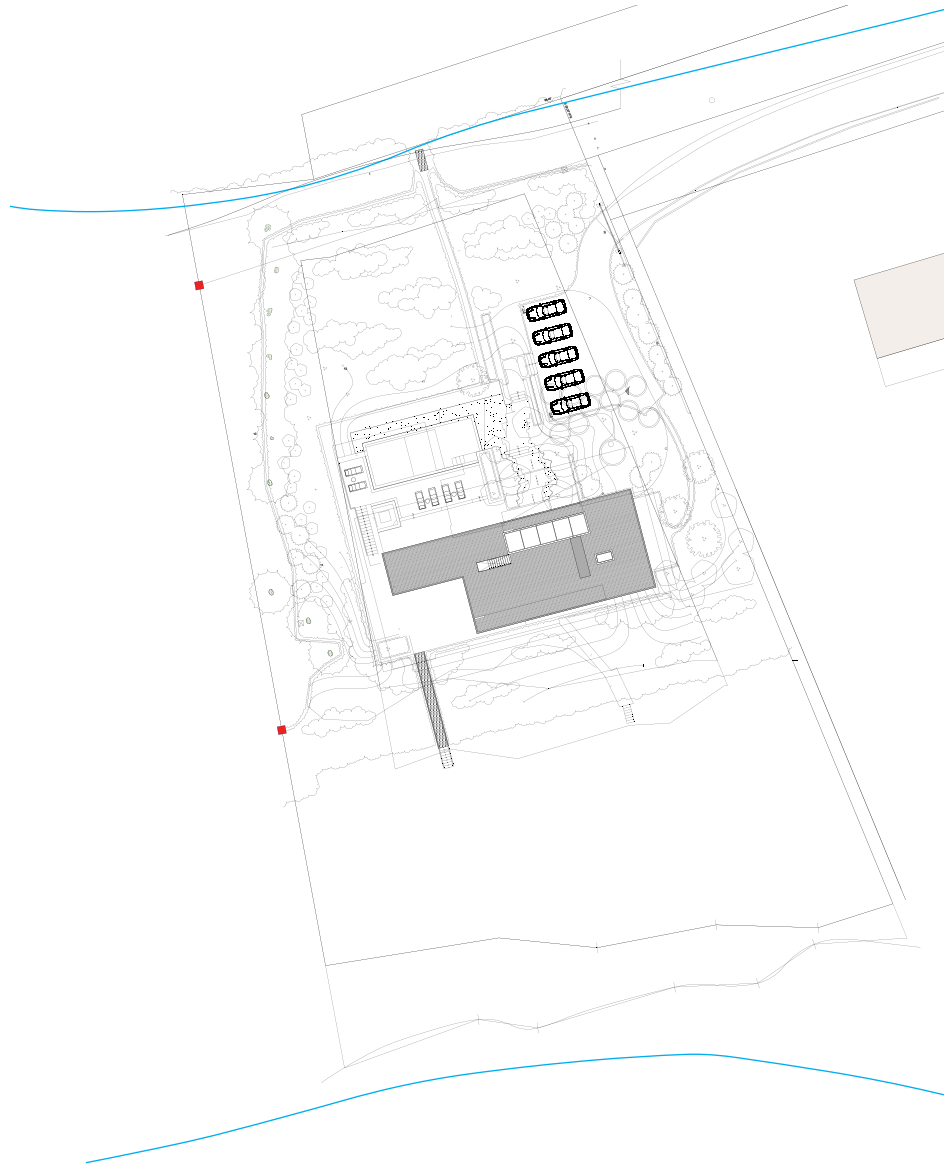
COVENANT HOUSE, NEW YORK, NY

LOBBY | PHOTOGRAPH BY ADAM KANE MACCHIA



GREAT HALL | PHOTOGRAPH BY ADAM KANE MACCHIA

COVENANT HOUSE, NEW YORK, NY



Size: 4,600 SQ FT
 Structure: Concrete, Steel, Wood Framing
 Finishes: Wood, Natural Stone, Sheetrock, Solid Surface
 Description: New Construction of a Summer Vacation House



FIELD HOUSE, HAMPTONS, NY
 WITH STELLE LOMONT ROUHANI ARCHITECTS | LAGUARDIA DESIGN | JULIE HILLMAN DESIGN
 ACTIVITIES: INTERIORS PROJECT ARCHITECT | DETAILS | SPECIFICATIONS | RENDERINGS | COORDINATION OF SITE MEETINGS | SUBMITTALS

PHOTOGRAPH BY MATT CARBONE



FIELD HOUSE, HAMPTONS, NY

LIVING ROOM | PHOTOGRAPH BY MATT CARBONE



ENTRY STAIRS | PHOTOGRAPH BY MATT CARBONE

FIELD HOUSE, HAMPTONS, NY



FIELD HOUSE, HAMPTONS, NY

MASTER BATH | PHOTOGRAPH BY MATT CARBONE



MASTER BATH | PHOTOGRAPH BY MATT CARBONE

FIELD HOUSE, HAMPTONS, NY



FIELD HOUSE, HAMPTONS, NY

GUEST BATH | PHOTOGRAPH BY MATT CARBONE



GUEST BATH | PHOTOGRAPH BY MATT CARBONE

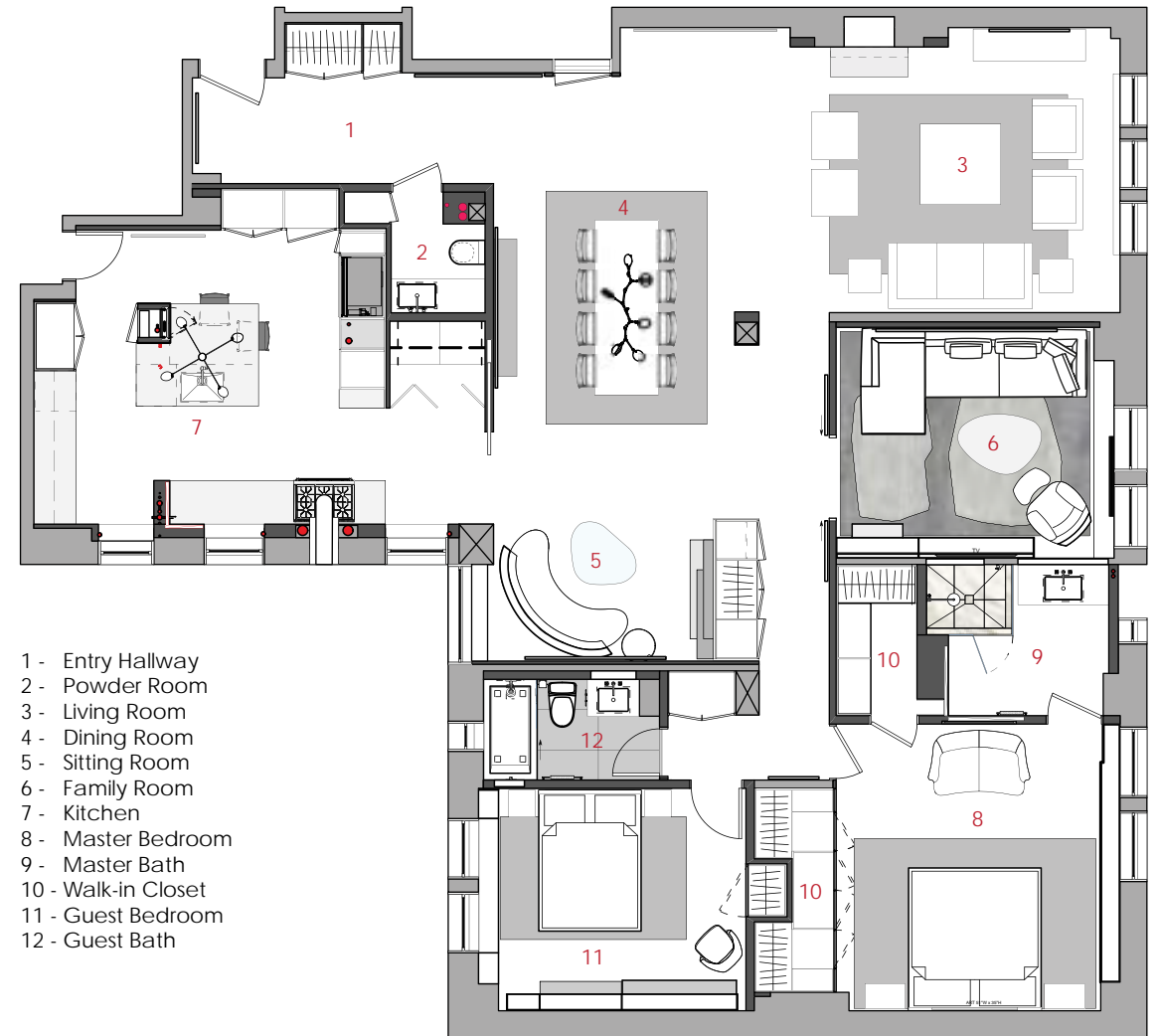
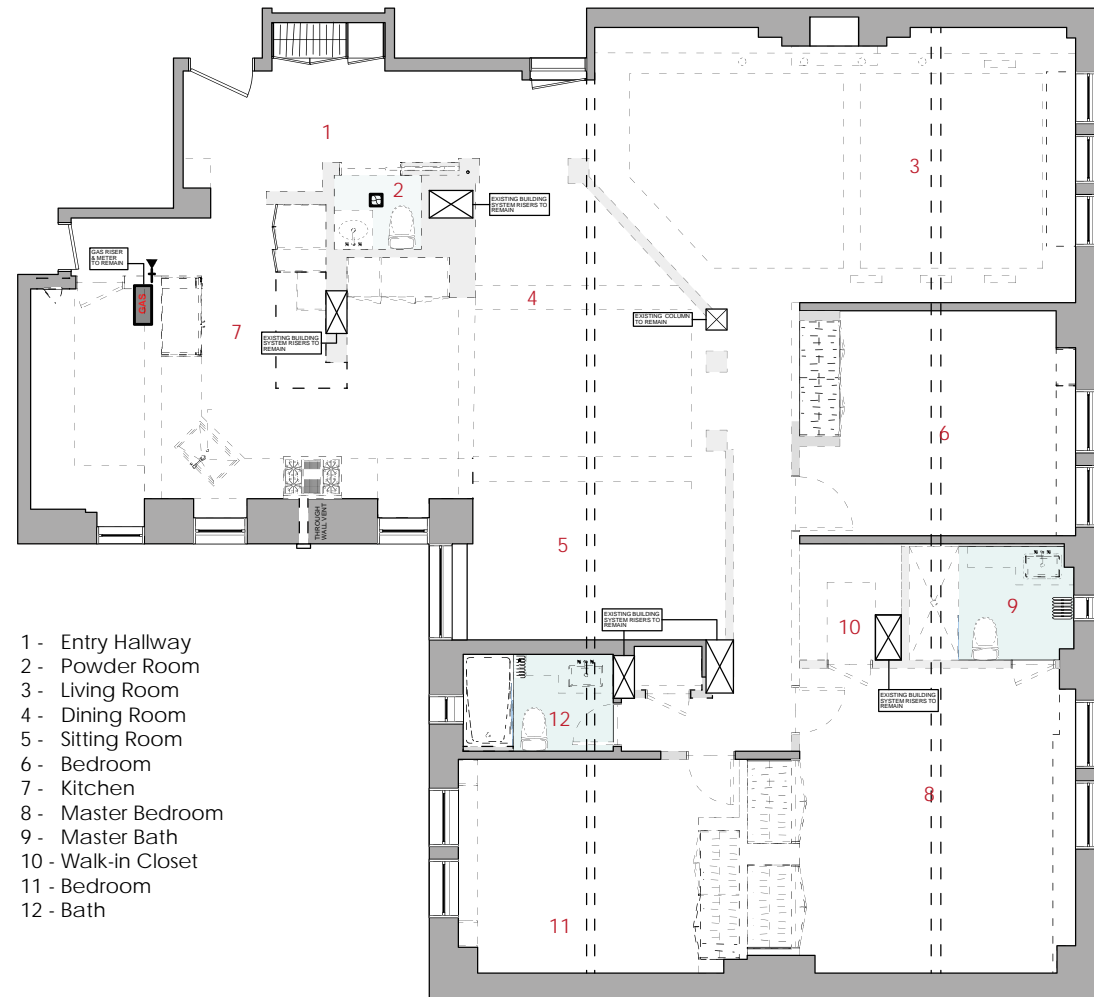
FIELD HOUSE, HAMPTONS, NY



PARK AVENUE APARTMENT, NEW YORK, NY
WITH STELLE LOMONT ROUHANI ARCHITECTS

ACTIVITIES: PROJECT MANAGER & ARCHITECT | CONSTRUCTION DOCUMENTS | BIDDING | CONTRACT ADMINISTRATION

DINING + SITTING ROOM | PHOTOGRAPH BY MATT CARBONE



Size: 2,000 SQ FT
 Structure: Concrete, Metal Studs
 Finishes: Wood, Natural Stone, Sheetrock, Man-made Countertops (Kitchen)
 Description: Gut-Renovation of 3-Bedroom Apartment



PARK AVENUE APARTMENT, NEW YORK, NY LIVING/ DINING | PHOTOGRAPH BY MATT CARBONE

LIVING ROOM | PHOTOGRAPH BY MATT CARBONE PARK AVENUE APARTMENT, NEW YORK, NY



PARK AVENUE APARTMENT, NEW YORK, NY

HALLWAY | PHOTOGRAPH BY MATT CARBONE



FAMILY ROOM | PHOTOGRAPH BY MATT CARBONE

PARK AVENUE APARTMENT, NEW YORK, NY



PARK AVENUE APARTMENT, NEW YORK, NY

FAMILY ROOM | PHOTO BY MATT CARBONE



POWDER ROOM | PHOTO BY MATT CARBONE

PARK AVENUE APARTMENT, NEW YORK, NY



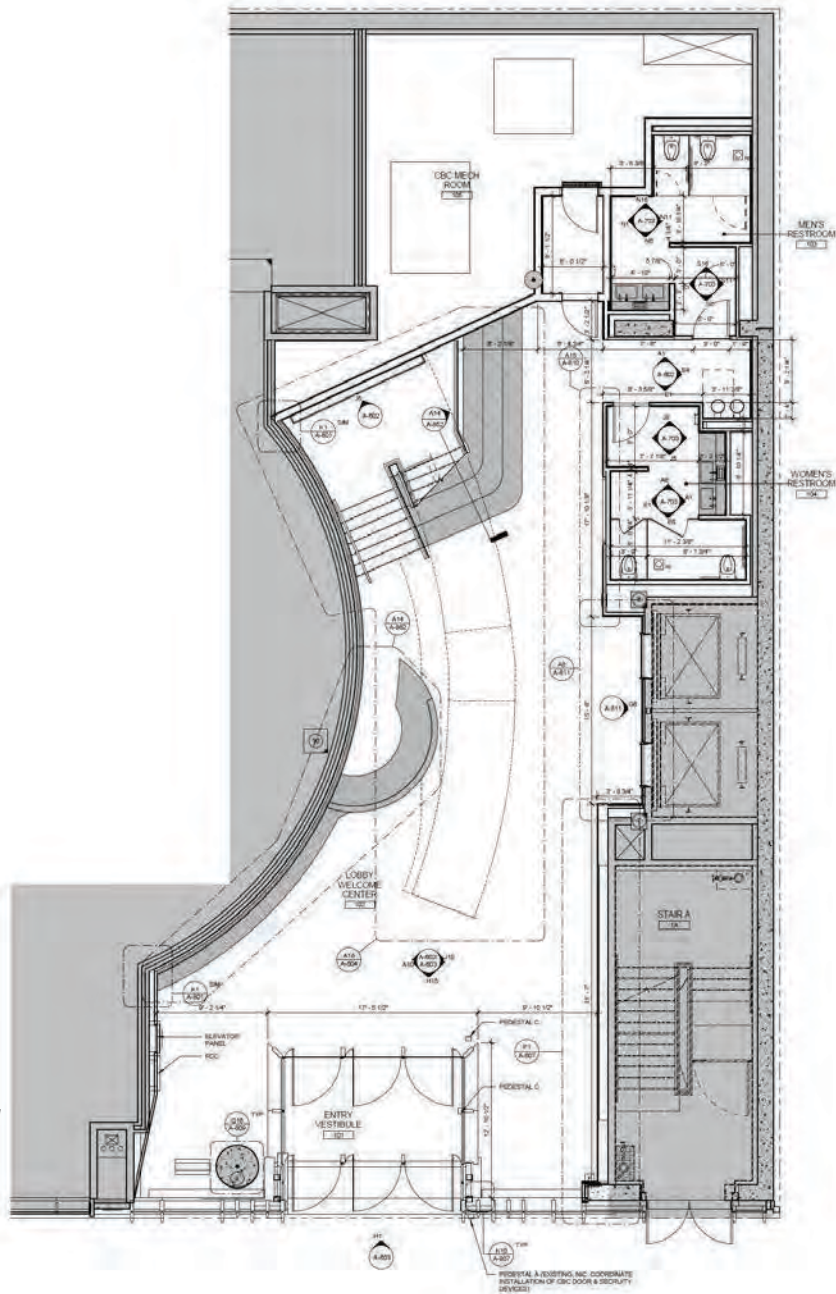
PARK AVENUE APARTMENT, NEW YORK, NY

KITCHEN | PHOTOGRAPH BY MATT CARBONE

KITCHEN | PHOTOGRAPH BY MATT CARBONE

PARK AVENUE APARTMENT, NEW YORK, NY

Size: 74,000 SQ FT
Structure: Concrete, Steel, Metal Framing
Finishes: Wood, Terrazzo, Aluminum, Bronze
Description: New construction of a 7-storey interior fit-out of a church with administrative, educational and recreational facilities.

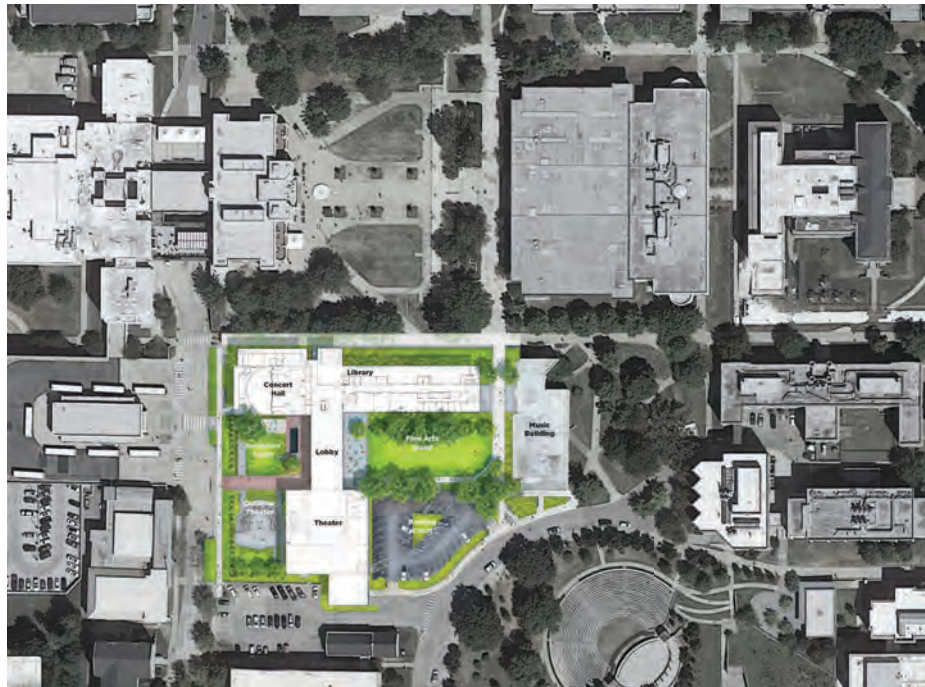












Structure: Brick, CMU, Concrete, Steel, Metal Framing

Finishes: Terrazzo, Wood, Resilient Flooring

Description: Restoration of the University of Arkansas' 1951 Fine Arts Center in colloration with Miller Boskus Lack Architects. The project included an addition to house new dressing rooms and music practice rooms adjacent to the existing theater to be renovated.



UNIVERSITY OF ARKANSAS FINE ARTS CENTER, FAYETTEVILLE, AR

WITH TENBERKE ARCHITECTS

ACTIVITIES: PROJECT ARCHITECT | CONSULTANT COORDINATION | SPECIFICATIONS | DETAILING |

Project Goals

1.

An integrated arts community

A vibrant and connected network of the arts in Fayetteville and beyond
2.

A visible, welcoming center

An inviting and accessible place for the public and the academic community
3.

An interconnected, teaching building

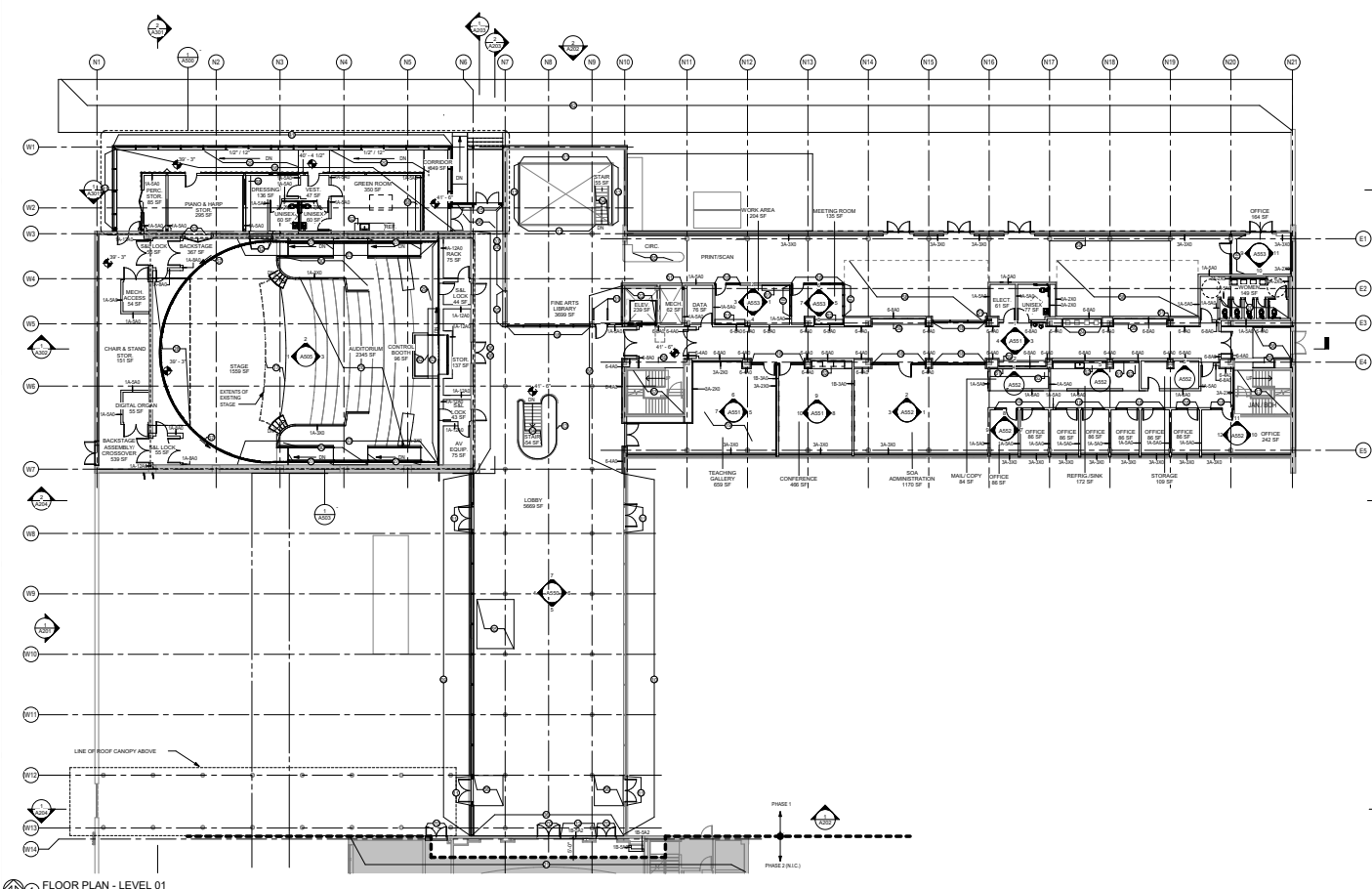
A highly functional, state-of-the-art facility that encourages creativity and collaboration; and adaptable for the future
4.

A holistic design vision

A fully integrated experience of architecture, landscape, furnishings, lighting, acoustics, and art
5.

Stewardship and renewal

Rejuvenate the complex in a historically sensitive manner to better support the teaching missions of the academic departments





Historic Design Characteristics:

- Wood doors at Theatre entrance
- Natural brick (unpainted) at interior and natural concrete columns
- Decorative track lighting with adjustable light fixture
- Smooth and clean ceiling surface
- Neutral, monolithic floor
- Flexible furniture and panels





UNIV. OF ARKANSAS FINE ARTS CENTER, FAYETTEVILLE, AR

LOBBY



PROPOSED

UNIV. OF ARKANSAS FINE ARTS CENTER, FAYETTEVILLE, AR



Historic Design Characteristics:

- Original turquoise blue storefront and window frames
- Buff brick, concrete structure, copper roof trim
- Planes, storefront, and screen walls juxtaposed with “solid” volumes
- Expressed thin line of the roof



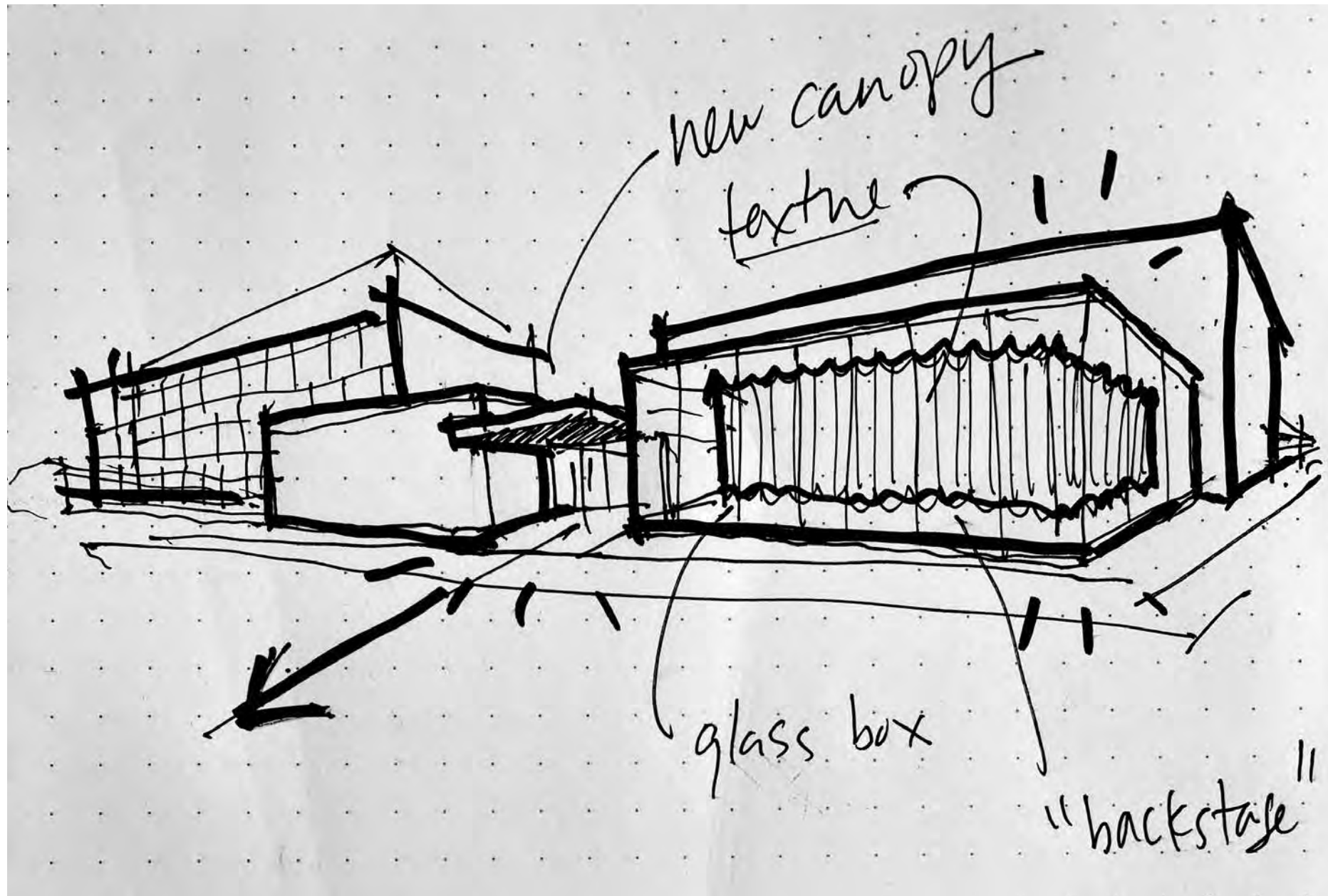
UNIV. OF ARKANSAS FINE ARTS CENTER, FAYETTEVILLE, AR

SCULPTURE COURT



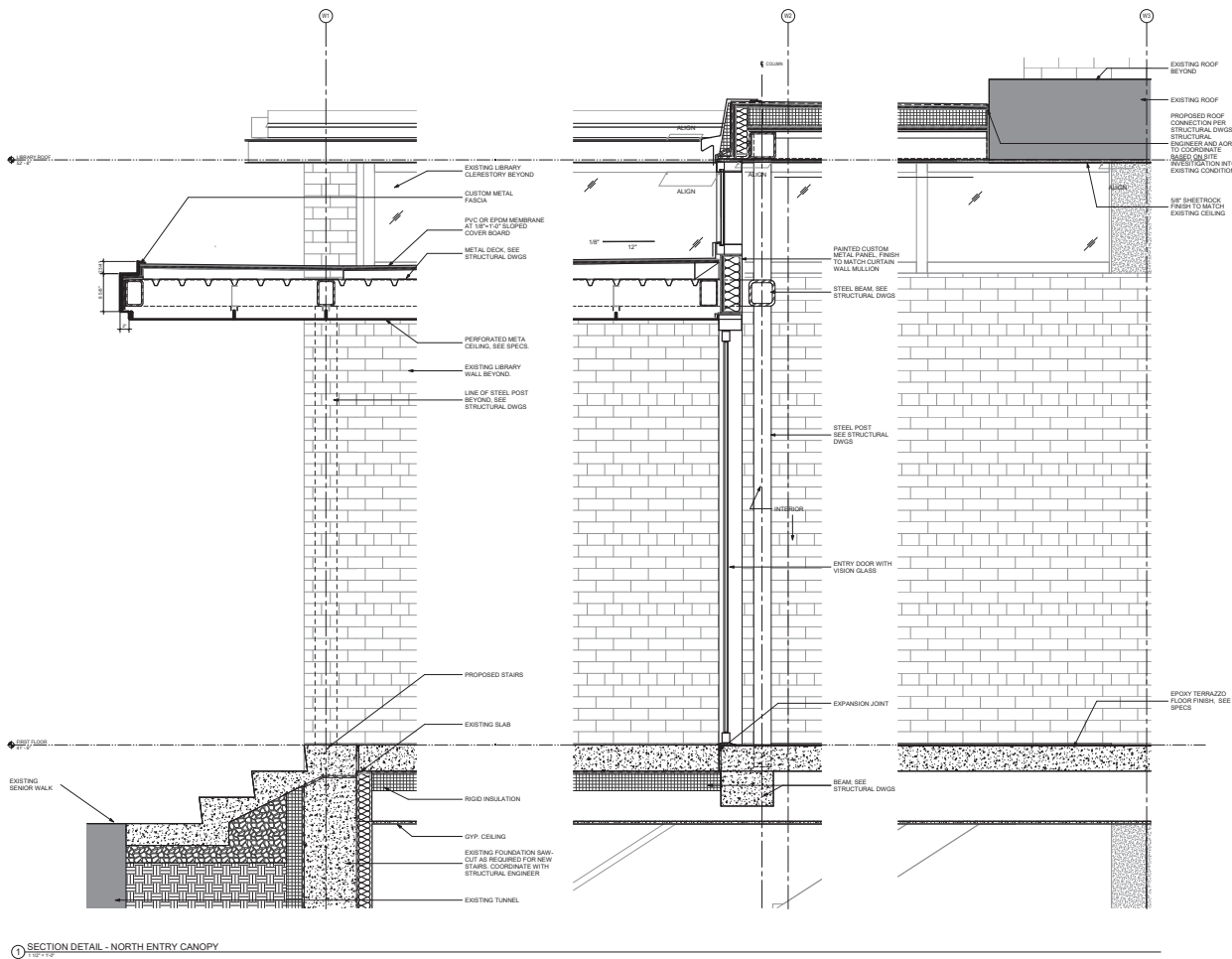
EXTERIOR MATERIAL PALETTE

UNIV. OF ARKANSAS FINE ARTS CENTER, FAYETTEVILLE, AR



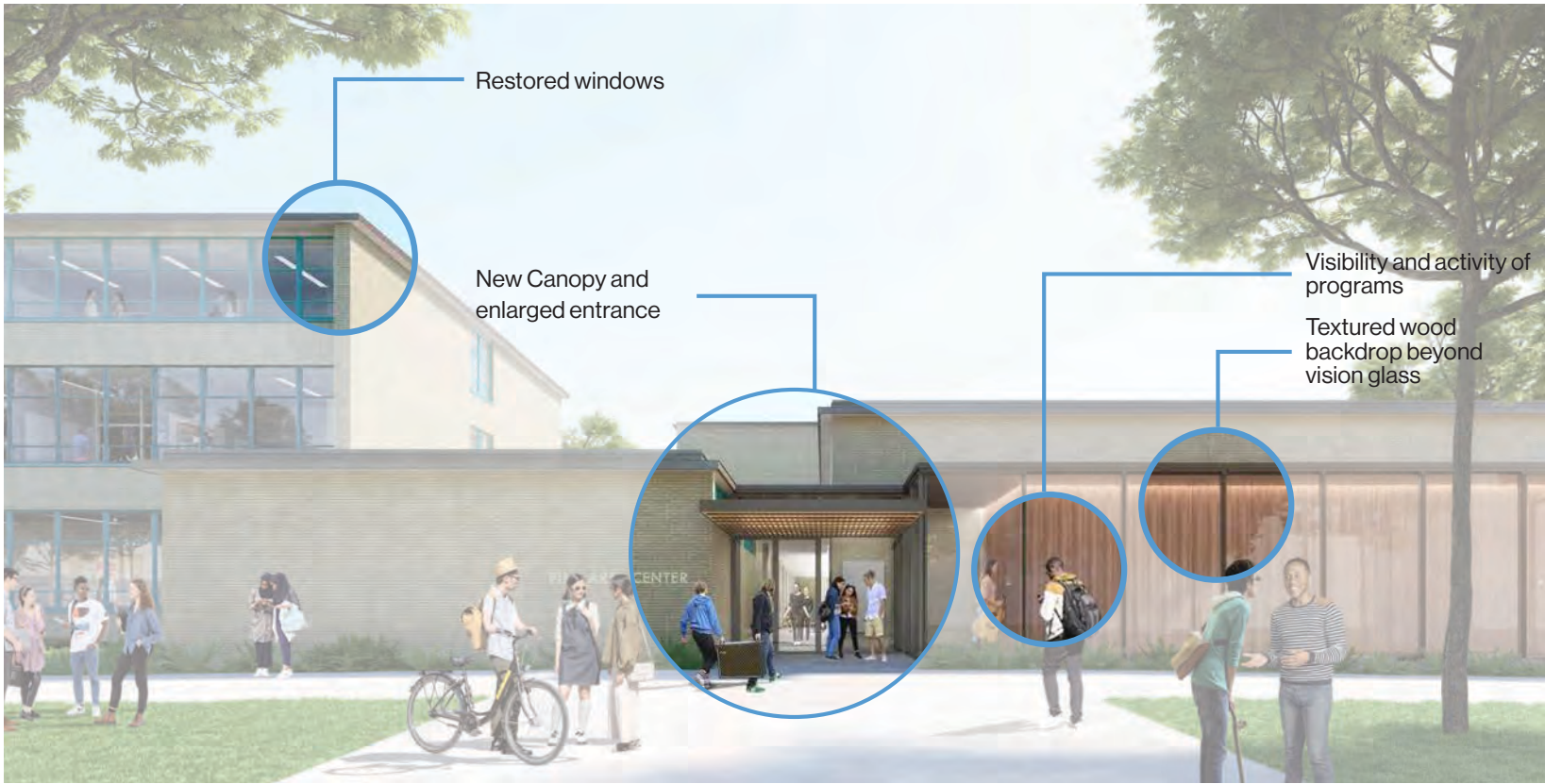
Addition Concept Sketch:

- New canopy and enlarged entry to increase connection to the campus
- A refined glass box that draws from the proportions of the original building, in juxtaposition to the existing brick
- A textured surface that forms a backdrop to the "backstage" activity that is visible beyond the glass
- The addition gives the building a welcoming presence to the north



UNIV. OF ARKANSAS FINE ARTS CENTER, FAYETTEVILLE, AR

CANOPY DETAILS



FEATURES OF ADDITION

UNIV. OF ARKANSAS FINE ARTS CENTER, FAYETTEVILLE, AR

FURNITURE



HEDGES BANKS RESIDENCE, HAMPTONS, NY DINING ROOM | PHOTO BY MATT CARBONE
DINING TABLE: KORANTEMMA LARBI & ELEANOR DONNELLY | FABRICATION BY FIELD & CO.

FAMILY ROOM | PHOTO BY MATT CARBONE **HEDGES BANKS RESIDENCE, HAMPTONS, NY**
DINING TABLE: KORANTEMMA LARBI & ELEANOR DONNELLY | FABRICATION BY FIELD & CO.



HEDGES BANKS RESIDENCE, HAMPTONS, NY

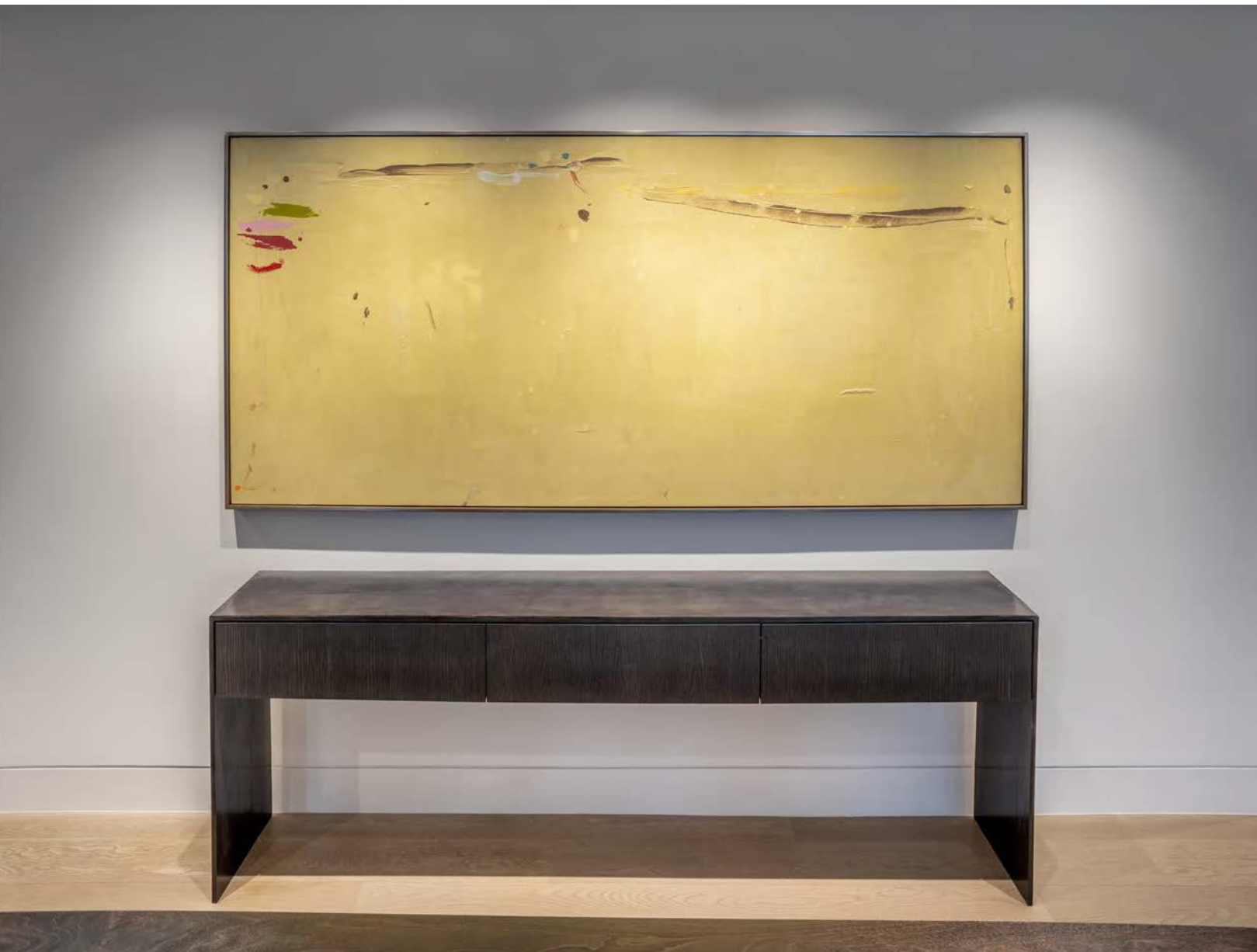
GYM | PHOTOGRAPH BY MATT CARBONE
SOFA: KORANTEMMA LARBI & ELEANOR DONNELLY | FABRICATION BY FIELD & CO.



GUEST ROOM | PHOTO BY MATT CARBONE

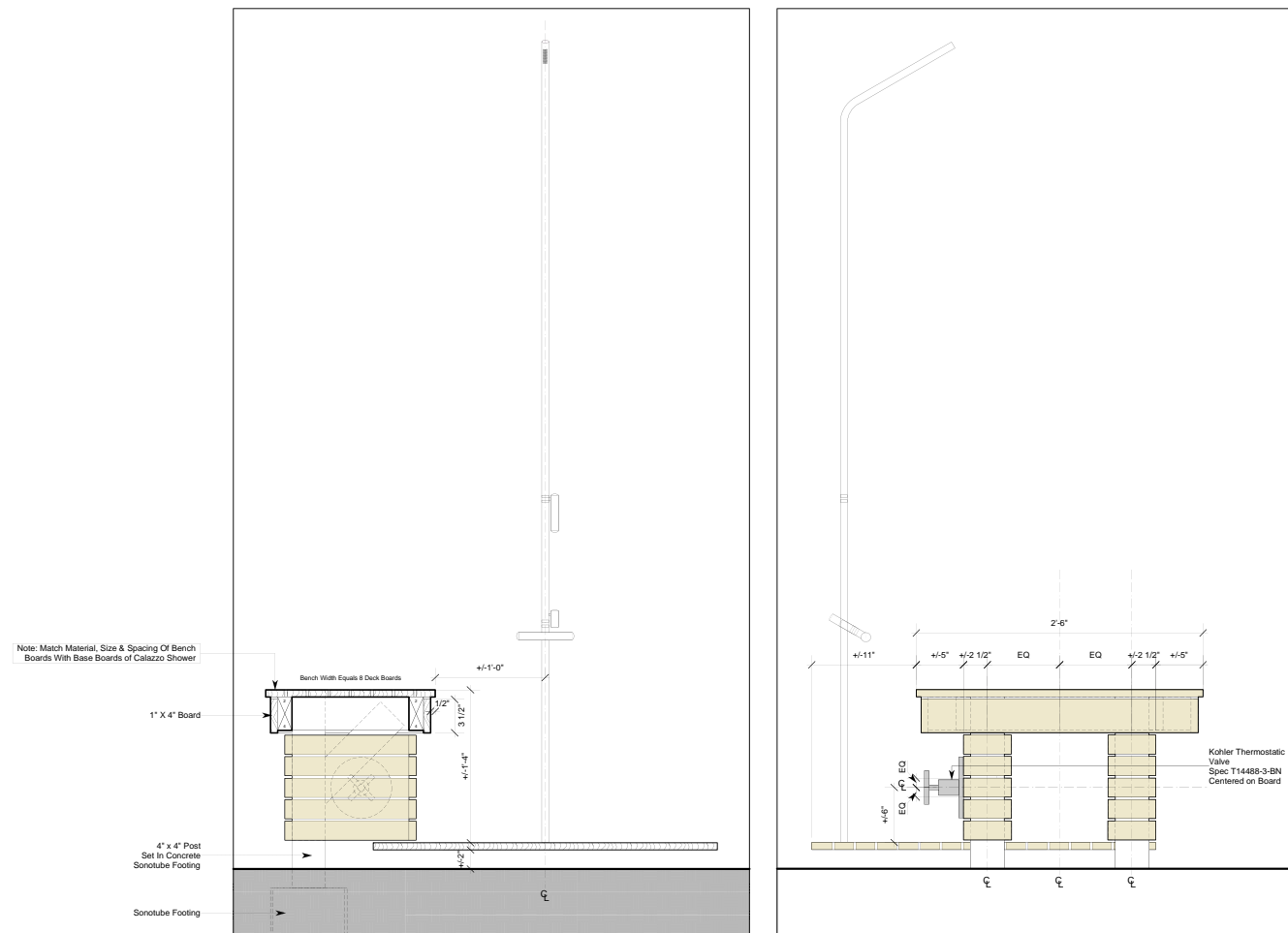
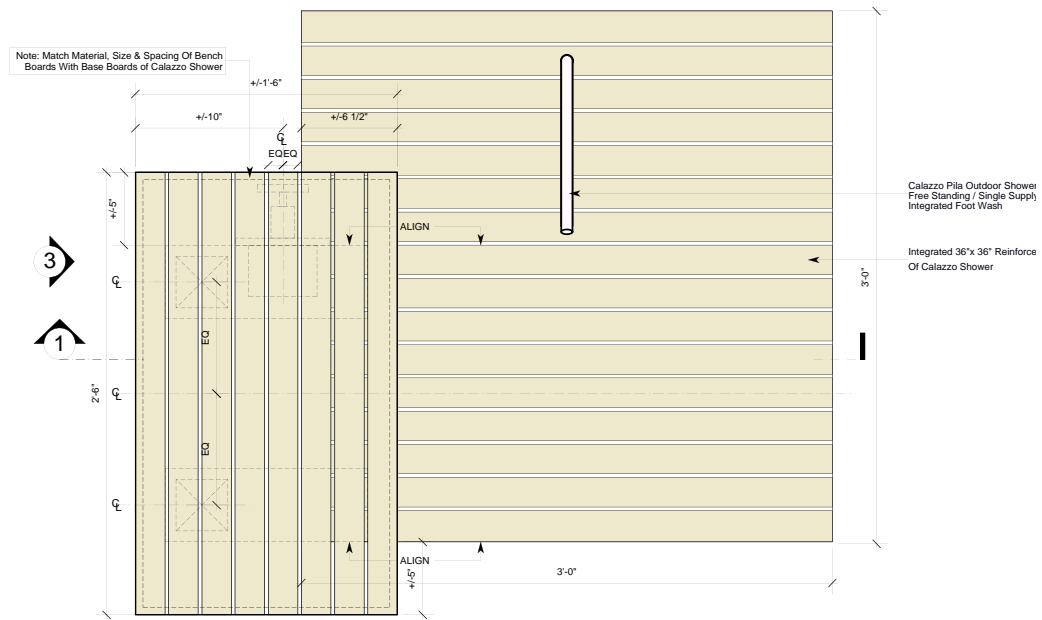
HEDGES BANKS RESIDENCE, HAMPTONS, NY

HEADBOARD + NIGHTSTAND: KORANTEMMA LARBI & ELEANOR DONNELLY | FABRICATION BY FIELD & CO.



PARK AVENUE APARTMENT, NEW YORK, NY DINING ROOM | PHOTOGRAPH BY MATT CARBONE
CREDENZA: KORANTEMMA LARBI & ELEANOR DONNELLY | FABRICATION BY FIELD & CO.

SITTING ROOM | PHOTO BY MATT CARBONE **PARK AVENUE APARTMENT, NEW YORK, NY**
CABINET: KORANTEMMA LARBI & ELEANOR DONNELLY | FABRICATION BY FIELD & CO.



SURFSIDE RESIDENCE, HAMPTONS, NY

OUTDOOR SHOWER PLAN & DETAILS

OUTDOOR SHOWER | PHOTO BY LUCAS COWART

SURFSIDE RESIDENCE, HAMPTONS, NY

BENCH: KORANTEMMA LARBI + LUCAS COWART | FABRICATION BY BULGIN & ASSOCIATES

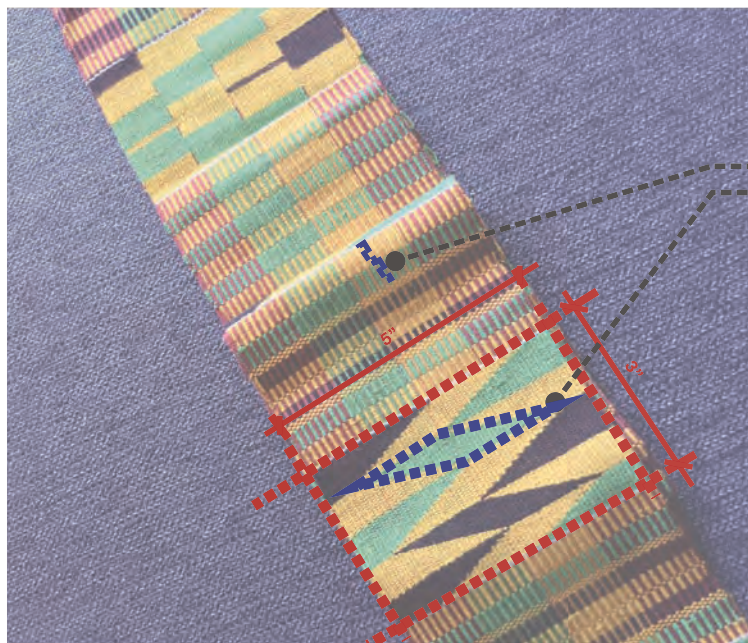
TEXTILES

My textile line, Korantemaa Larbi | Design (www.korantemaalarbi.com) and collections are inspired by my Ghanaian heritage, by the Kente cloth and Adinkra patterns of Ghana, with a minimalist interpretation. They are aimed at creating a niche for black and Afrocentric aesthetics in the international design market, offering a range of options to designers and consumers for both residential and commercial projects. With our range of products, which include upholstery textiles, wallcoverings and soft furnishings, the options for designers and consumers alike open up. Each pattern comes from an in-depth research into the color theories and their significance within the Ghanaian culture.

I take a tactile approach to the designs. Beginning with sketches, I use that as a research tool, delving into the structure and logic behind the cultural motifs I take inspiration from, before moving into the digital phase. Following a selection of patterns to further develop, I go through a rigorous process of sampling to select fabrics and correctly scale patterns.

Each design comes in 10-yard panels of fabric with off-the-shelf offerings in the form of decorative pillows and table linen.



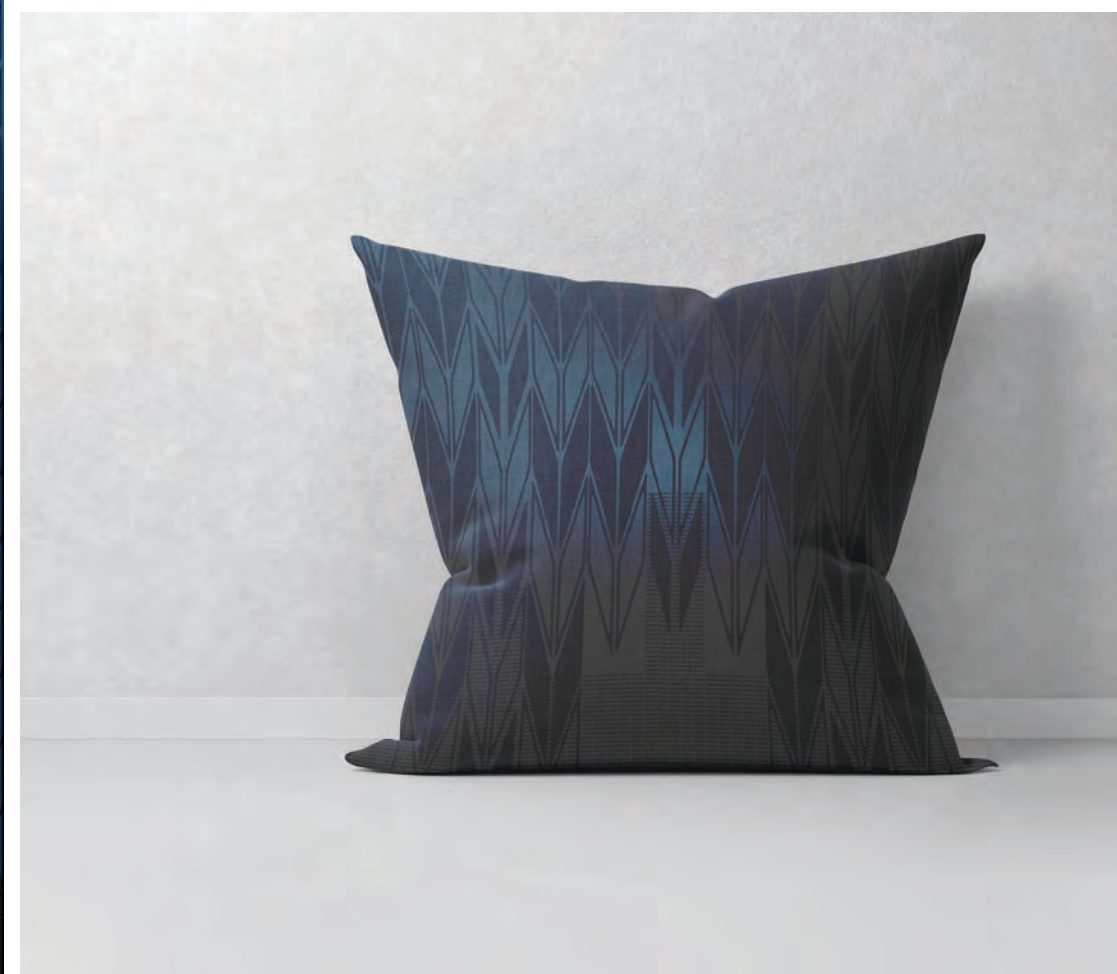


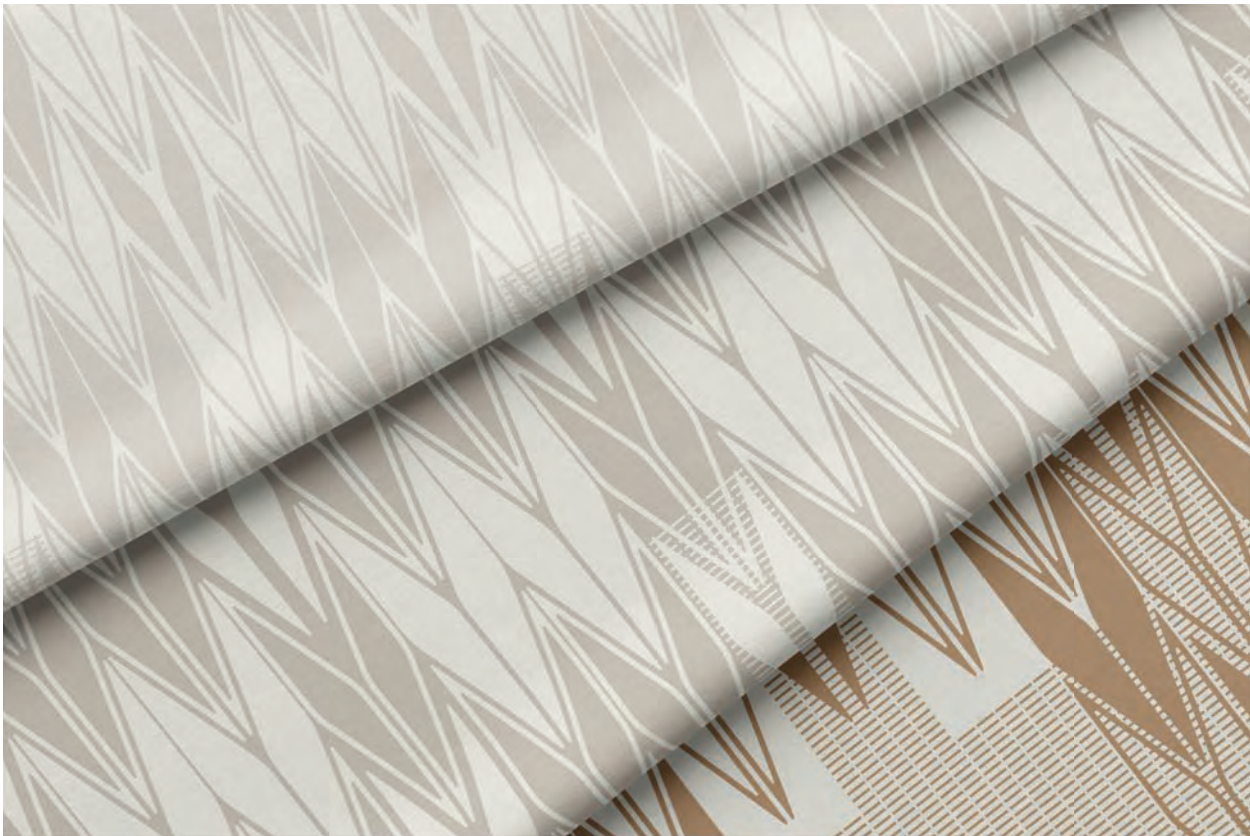
MODULAR
(3"x5" PANELS)
LINEAR STAGGERING BANDS
NESTING SHAPES



The FRACTALS collection is inspired by the traditional Kente patterns of Ghana with a modern interpretation. The inherent logic and proportions of the kente weave inform the underlying grid of the patterns.

The color palette of the collection takes inspiration from the landscape and vegetation of Ghana - its forest regions, sandy gold beaches and blue skies - in a subtle form that evokes the sophistication, regality and richness of the kente cloth. Soft velvet and satin fabrics make up this collection.





KORANTEMAA LARBI | DESIGN

FRACTALS | MIST, BEACH SAND & EARTH



FRACTALS | BEACH SAND

KORANTEMAA LARBI | DESIGN



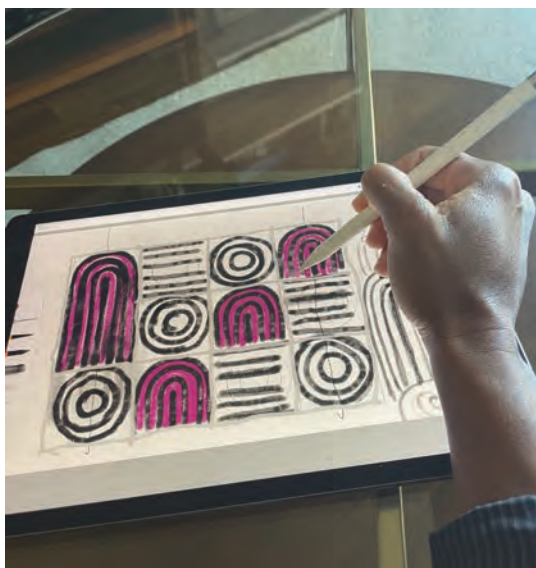
KORANTEMAA LARBI | DESIGN

FRACTALS COLLECTION | B|W I



FRACTALS | AHENIE

KORANTEMAA LARBI | DESIGN



The Akan culture of Ghana has several symbols which represent concepts and carry proverbial meanings. These symbols are referred to as Adinkra, which literally means saying goodbye. Traditionally, they can be found primarily on cloths, other fashion items, but are also used as logos, motifs on furniture and decorations on walls.

In the GEOMETRIX collection, I explore the graphic quality of the Adinkra symbols in a bold, playful and contemporary way. The colors of the collection are fun, and bold, inspired by the colors of the tropical Fruits of Ghana - lemons, avocados, oranges. The linen fabrics used in this collection make it versatile, whether going for a modern, understated decor or a youthful, energetic theme.





KORANTEMAA LARBI | DESIGN

GEOMETRIX | B|R I



GEOMETRIX | B|R I

KORANTEMAA LARBI | DESIGN

