

AMONG THE TREES Emerging from the forest floor, this home is like a gentleman's club that welcomes all who enter, including its owners and their two children. In every corner is a harmonious blend of both the dramatic and serene, rustic and refined, exquisite and comfortable, and industrial and romantic. "It is a home that can weather whatever life brings to it," says interior designer Erica Colpitts. >

COMFORT ZONE

AFTER A REFRESH, THIS FAMILY HOME
MESHERS SOFT COLOURS AND TEXTURES
WITH AN INDUSTRIAL AESTHETIC

Story KARINE MONIE Photography EMA PETER



When the owners of this home initially saw it they weren't in love with the interiors but the location won them over and they knew with a little bit of help they could make it into a place where they could put down roots and raise their nine-year-old son and a six-year-old daughter. So they turned to interior designer Erica Colpitts. "The couple are generous hosts and friends, and they wanted their home to be a place to easily welcome families for intimate dinner parties and celebrations," says Erica of the husband and wife from Canada and Australia respectively. "This desire was a strong factor in design decisions, for as much as they appreciate beauty in their surroundings, they wanted to ensure that nothing was so precious that it could get in the way of their children and guests feeling comfortable in their home."

Tucked among cedars in a forest within a quiet community on the west coast of Canada, the home features Mid-Century modern architecture. "They enlisted architectural firm Olson Kundig to create a fresh concept for the home that honoured the original structure and landscape, better met their family needs for space, and felt more like them design-wise," says Erica.

Having lived in the home for a few years while working on the renovation plans, the couple decided to expand the footprint minimally. "The proportions of the main rooms are comfortably intimate, but there are striking moments of expansion achieved in the gorgeously airy main foyer and the floor-to-ceiling forest views throughout the different spaces," says Erica. "My task consisted in melding Olson Kundig's overall design for the home with soft and romantic interiors. This required my portion of the work to be incredibly concept driven, a strength of mine stemming from my background in restaurant design."

The neutral and texturally layered palette marries with the natural materials, such as timber, metals, wools and linens, while blackened steel was used for the staircase unit. Weathered to the perfect patina before sealing, corten steel adorns the front door.

"Where colours were used, we wanted those and their textures to be reminiscent of a gentlemen's library," says Erica. Warm white, creams and oatmeals prevail with cognac-coloured leather, dark flax and deep grey. "This provides the backdrop for the most colourful moment in the home: the original rust-coloured brick fireplace," adds Erica, who drew inspiration both from rural British interiors – in particular for the furnishings – and Australian interiors to create a sense of serenity and calm. "In another life, the homeowner would have been very happy to find herself reading her days away in a tiny English cottage."

The feeling of warmth and the interaction with light are omnipresent. "As the sun moves behind the forest, there are moments when it peeks through the trees and pours into the living room," says Erica. "You can actually see the individual beams of sunlight – it is magical."

HALLWAY "The bookcase and staircase are the key features in this part of the home," says Erica. "The staircase unit functions as an oversized sculpture that bridges the three levels of the home together," she adds. **RECREATION ROOM** "We landed on a soft grey for the substantial RH sectional in the recreational room [top left]," says Erica. "A casual tartan wool rug was added, plus a custom blackened steel coffee table."



LIVING AREA "The aged leathers and oatmeal tones throughout this space wrap the room in warmth," says Erica. "Each piece of furniture is substantial and solid – which is a good thing as the children regularly bounce from one piece of furniture to the next." A studio lamp by Design Within Reach (for similar, try 'Bennett' spotlight tripod floor lamp from Temple & Webster) is a statement piece and the coffee table ottoman is by Fourhands. >

WE LOVE...
ribbon windows

Having chosen dark, moody tones in the kitchen, this long ribbon window above the benchtop lets light flood into the space and adds warmth. It also shows off the smooth concrete benchtop while serving a practical purpose of making it easy to see the workspaces during the day, as well as providing the owners a view of the outside world while they're prepping meals for the family.

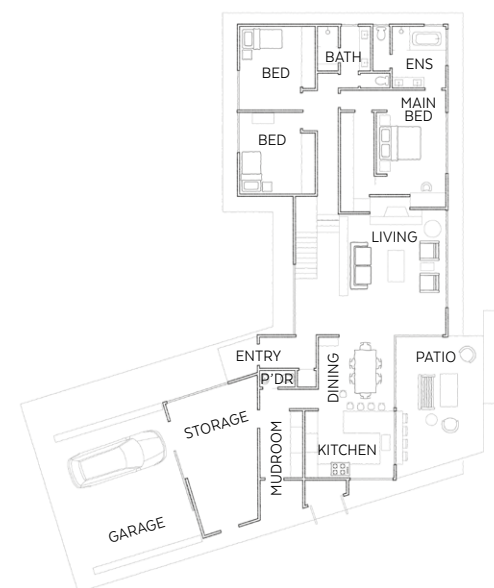


“I AM *most proud*
OF THE CLIENTS’
enjoyment and
satisfaction IN THE
FINAL DESIGN OF
THIS HOME”

ERICA COLPITTS,
INTERIOR DESIGNER

FLOOR PLAN

GROUND FLOOR



LOWER GROUND FLOOR

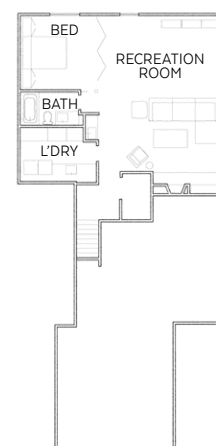


ILLUSTRATION KENZIEDSIGN.COM.AU



DINING AREA The hero of the dining area (above) is a scrubbed and worn antique table from Scott Landon Antiques. “It sets the mood for completely casual and ‘at ease’ meals – you can do anything to that table and it will only add to its patina and charm,” shares Erica. “The George Nelson pendant [try Living Edge] is original to the house and casts an aged glow when lit, and ceramics by Janaki Larsen and linens by The Stylewell complement the atmosphere.” **KITCHEN** “Furnished with barstools by Arteriors through CF Interiors, the kitchen [opposite] is modest in scale, grand in impact, and the most delicious combination of moodiness and romance,” says Erica. “Vintage Champagne coupés and delicate bone china sit within modern blackened steel – proof that varied and contrasting materials can coexist and complement each other.” The concrete counters and splashback by Diamond Finish Concrete Countertops combine with the tap by Galley Tap through Cantu Bathrooms and the cabinet hardware is by Joseph Giles. >



CHILDREN'S BATHROOM This neutral bathroom designed for the couple's children will last well into their teenage years, with a few fun elements, such as the oversized, knurled-wheel tapware by Crosswater London and a fire-engine red lever in the shower (out of view). **POWDER ROOM** "Limestone wall tiles set the tone for this room [above right]. They are dark and moody, full of character and raw sediments," says Erica. Each fixture is its own little sculpture: the Brodware tap, the custom metal sink plinth, the stone sink and the torch light by John Beck Steel." **MAIN BEDROOM** "The homeowner has always loved Shou Sugi Ban and the main bedroom [bottom left] was the perfect place to bring this material into the home," says Erica. "We clad the headboard wall in vertical panels and added a custom linen headboard by local maker Cloth Studio [try Heatherly Design]. We then sought out another local artisan, Nicholas Purcell, to build petite bedside tables." **GIRLS' BEDROOM** Once Erica decided on the Boråstapeter fairies wallpaper, the rest of the room came together. She had an Irish felt lampshade made to match the fairy hats, and found a miniature rattan bedside table from Etsy Australia.

MAIN BATHROOM "Our desire was for this space to be soft and tranquil," says Erica of the vanity in the couple's bathroom. "We used Samuel Heath fixtures in a rich brown finish, and matched them with Colonial Bronze hardware with knurled detailing. Add in our natural walnut vanity, limestone flooring and black patinated pendants by John Beck Steel and you have what I call a pretty unique and stunning palette." >



"THE BATHROOM is a moment of whimsy WITHIN THE ARCHITECTURALLY modern home"
ERICA COLPITTS, INTERIOR DESIGNER

Beautiful HOMES

Source book
Interior design: Erica Colpitts
Interior Design, ericacolpitts.ca.
Architecture: Olson Kundig,
olsonkundig.com.
Contractor: Brent Braybrook,
Braybrook Projects,
braybrookprojects.ca.
Joinery: Robin Woronko, Intempo
Interiors, intempointeriors.com.
Landscape architect:
Amelia Sullivan.
Metawork: Drabek Technologies.

OUTDOORS The floor-to-ceiling windows, which run the entire length of the back of the home, provide a view of the pool that blends seamlessly with the forest that surrounds it. The garden itself features corten steel beds filled with lavenders, allium, roses and specialty peonies selected by the homeowner.



LEAFY HIDEAWAY

INSIDE STORY

Who lives here?
A husband and wife, plus their son, nine, daughter, six, and dog Lily.
What are you most proud of?
Erica: “We managed to pull together the elements of old and new, industrial and romantic, into a unified and timeless aesthetic that is exactly to the owners’ tastes.”
Favourite feature?
“The view of the kitchen through the dining room. To me it is a symphony of muted tones, soft textures and organic finishes.”
Your best decorating tip?
“Taking individual pieces that you love from new shops, old shops, family pieces and local makers, and bringing them all together to create your own distinctive look.”

- 1. An RH sofa and a cushion by Libeco add warm touches to the living area.
- 2. The open hatch provides a connection between the home and outside area.
- 3. A firepit allows the couple to extend their outdoor entertaining season.
- 4. Metallic and ceramic pieces add warmth and character in the kitchen.
- 5. The flooring in the mudroom is Texas Azul limestone and the joinery has been custom designed by Intempo Interiors.
- 6. Thomas D. Mangelson’s ‘Windswept Bison’ features in the dining area.
- 7. Erica custom designed the I-Beam side table in the living area.