



# Strategic Brand Solutions Catalog

TAKE YOUR BRAND 1ST CLASS

REVIEW THE DECK

WE TURN BRANDS INTO PREMIUM EXPERIENCES



# Understanding Our Services:

At Deeply Rooted Studio we recognize the importance of clarity and precision in helping you make the best choices for your business. Each of our services is meticulously structured into individual phases or package levels to cater to various needs and goals.

## HERE'S HOW WE'VE ORGANIZED THE INFORMATION TO ASSIST YOUR DECISION-MAKING PROCESS:

- 1. Service Overview and Description:** Start here to get a fundamental understanding of what each service entails and how it can benefit your business.
- 2. Service Packages/Levels and Deliverables:** Dive into the specifics of what each package or level offers. We detail the deliverables and the scope of work so you can align your needs with our solutions.
- 3. Investment and Timeline Guidance:** We provide clear information on the financial investment and timelines associated with each service, ensuring you know what to expect before making a commitment.
- 4. Decision Guide:** This section is designed to help you make the best-informed decision. It includes key considerations that should influence your choice, ensuring you select a service that aligns perfectly with your business objectives.
- 5. Your Choice Reflects Your Ambition:** We believe in the power of choice. This part reiterates how selecting a particular service or package can reflect and support your broader business ambitions.

THEY SAY NOT TO JUMP TO CONCLUSIONS, BUT AS A BUSY CEO, YOU VALUE EFFICIENCY.

WHY WADE THROUGH ENDLESS TEXT WHEN YOU CAN GET STRAIGHT TO THE POINT?

Use the links below to 'jump to' the information that matters most to you—no scrolling required

It's about getting you the answers you need, fast, so you can make decisions and move forward."

[DFY SERVICES OVERVIEW](#)

[OUR METHODOLOGY](#)

[THE FULL REBRAND EXPERIENCE](#)

[THE LAUNCH ARCHITECTURE](#)

[THE BRAND DIRECTOR PARTNERSHIP](#)

[EXCLUSIVE ENHANCEMENTS](#)

# About Us



## SPECIALIZING IN BUILDING PREMIUM BRANDS FOR CEOs, THOUGHT LEADERS AND VISIONAIRES WHO ARE DEEPLY ROOTED IN THEIR MISSION

We are a full-service Creative Agency with more than 4 years of experience in working with high-caliber female founders.

We are here to help you take your brand 1st class, through our full-circle brand approach.

*our clients were featured in*



WE CAN ACHIEVE IT TOGETHER

# Meet The Founder

## Part time digital nomad, full time CEO...and a lifetime creative soul.

With more than 4 years of experience working in the digital industry, I have developed a full-circle approach to branding. Deeply Rooted Studio is a reflection of my background working in fashion industry and marketing.

Traveling the world for the last 10 years has allowed me to gain a lot of knowledge and unique perspective that has been driving my passion to help other founders experience the freedom and quality in their own businesses.

I have helped dozens of entrepreneurs build powerful brands that bring results on repeat and I am ready to do the same for you because I have seen it first hand, what a n ever evolving brand with strong message and visuals can do.

I've spent 7 years not just improving my creative and technical skills, but also my ability to adapt well to the needs of your industry. When you work with Deeply Rooted Studio, you'll feel at ease knowing that your brand and business are in capable hands.

*...and your brand director*

*as seen in*



SHOUTOUT COLORADO



CANVAS REBEL

# Deeply Rooted Method

experience the full-circle brand approach.

## 1 Brand Direction

Inner and Outer energetics of your brand play a huge part in laying down long-lasting foundations.

## 2 Client Experience

This is where you build your brand reputation and foster brand loyalty. Focusing on creating a strong client experience helps us further connect your future client with your business through an optimized set of brand touchpoints and strategic User Experience (UX).

## 3 Marketing & Launch

At Deeply Rooted Studio we combine marketing, launch and tech support within everything we do. This means all of your assets are well optimized, thought out and executed before we press publish.



# The Overview

DONE FOR YOU SERVICES AND CONSULTING

## The Full Rebrand Experience

### THIS IS FOR YOU IF:

- You're a **Visionary CEO** aiming to **elevate your brand** to reflect your **evolved leadership** and **unique style**.
- You **seek a transformative, strategic brand overhaul** that empowers and **positions** you as an **industry leader**.
- You **value personalized, innovative branding solutions** tailored to your specific path and ambitious goals.
- You're **ready to invest in attracting premium clients** and building a legacy through a distinctive, premium brand experience.

## The Launch Architecture

### THIS IS FOR YOU IF:

- You're a **Visionary CEO** aiming to **elevate your brand** to reflect your **evolved leadership** and **unique style**.
- You **seek a transformative, strategic brand overhaul** that empowers and **positions** you as an **industry leader**.
- You **value personalized, innovative branding solutions** tailored to your specific path and ambitious goals.
- You're **ready to invest in attracting premium clients** and building a legacy through a distinctive, premium brand experience.

## The Brand Director Partnership

### THIS IS FOR YOU IF:

- You're a **High-Level Entrepreneur/ Business Owner**: Specifically tailored for those in the consultancy, e-commerce, and B2B sectors who are generating substantial revenue and need expert oversight to scale their brands.
- You're a **Visionary Seeking Comprehensive Brand Oversight**: Ideal for business owners who require a strategic partner to manage all aspects of their brand, from design to strategic marketing.
- You're a **Leader Looking for High-Touch, Personalized Service**: Suitable for clients who value ongoing, personalized strategic guidance and are ready to invest in top-tier service to push their brand forward.

	<b>The Full Rebrand Experience</b>	<b>The Launch Architecture</b>	<b>The Brand Director Partnership</b>
	Comprehensive brand transformation from the ground up	Strategic and cohesive design and tech setup for launching a signature offer	Full-scale brand and marketing management
<b>Ideal For</b>	CEOs ready to evolve their entire brand identity to align with growth and new goals	CEOs planning to launch or relaunch a key product or service with a strong market impact	High-revenue businesses needing dedicated brand leadership
<b>Key Offerings</b>	<ul style="list-style-type: none"> <li>• Full brand redesign</li> <li>• Strategic brand consultancy</li> <li>• Legacy and influence building</li> </ul>	<ul style="list-style-type: none"> <li>• Cohesive launch asset design</li> <li>• Funnel and course portal setup</li> <li>• Launch strategy enhancement</li> </ul>	<ul style="list-style-type: none"> <li>• Continuous brand and marketing oversight</li> <li>• Strategic and design services</li> </ul>
<b>Consultation</b>	Deep dive into brand essence with strategic consultancy sessions	Focused brand consultancy to refine launch strategy	Ongoing advisory support and monthly strategy sessions
<b>Tech Support</b>	Comprehensive support for brand implementation across platforms	Complete tech setup for course portals and launch funnels	Full management of brand-related tech and systems
<b>Client Transformation</b>	Transforming brand perception and market position	Enhancing launch impact and sales effectiveness	Integrating strategic brand management into daily operations



# The Full Rebrand Experience

**Unleash the power of your brand and demand attention with our Full Rebrand Experience.**

This is a full-service branding and website package for CEOs who are ready to stand out by being themselves.

**Our Full Rebrand package has been designed to improve overall brand experience and strengthen positioning to gain more influence on the market.**



# The Full Rebrand Experience

## PHASE ONE: SHAPING YOUR BRAND

**1:1 60min Brand Consultancy Call** | Brand Strategy Call To Ensure The Success Of Your Brand Direction

**Brand Direction** | Strategically Designed Brand And Creative Direction For Your Business

**Photoshoot Direction** | Art Direction For Your Brand Photoshoot To Help You Step Into The Space As An Authority And Create Seamless Client Experience. This includes photoshoot assistance with finding the perfect place, outfit suggestions, props, shot list, photographer brief and strategically aligned direction that will help your brand stand out.

**Moodboard** | Thoughtfully Curated And Timeless Creative Direction

**Logo Suite** (1x Main, 2x Secondary, 2x Icons, Your Services/Program Logos Are Included As Well except if they would need a separate brand direction) | Custom Logo Suite Designed To Reflect Your Business Direction

**Typography Suite** | Curated Font Suite That Holds Your Brand Direction Together For Years To Come

**Brand Board** | A Quick Cheatsheet To Understand Your Brand That Can Be Shared With Your Team Members

**Brand Guidelines** | A Full Brand Guidelines Booklet To Ensure Your Brand Follows The Brand Direction

## PHASE TWO: DIGITAL PRESENCE BUILD-OUT

**1:1 60min Website Strategy Session** | This Session Will Help Us Understand Your Future Business Goals, So That We Can Build A Website That Supports The Bigger Picture. Strategy Session Is The Single Most Important Part Of This Whole Project Because We Will Make Sure To Hit The Right Type Of Metrics.

**Custom Website Design** | Each Page Will Be Developed And Designed According To Our Signature Website Strategy And Brand Direction To Ensure We Turn Your Visitors Into Paying Customers/Clients

**CRM Integration And Technical Support** | Nothing Makes You Cringe More Than The Word TECH? We've Got You Covered! Any And All Integrations Will Be Taken Care Of For You. Think Analytics, Pixels, CRM Forms, Embeds And Beyond!

**Mobile Optimization** | In This Digital World Nothing Is More Important Than A Perfectly Optimized Mobile Version Of Your Website. We Will Make Sure To Create A Foolproof User Experience For Your Website Visitors

**Video Trainings To Manage Your Website** | Let Us Lift The Weight Of "So What Do I Do Now With My Website?" Off Your Shoulders With A Hands On Support And Tutorials On How You Can Easily Manage Your Website Going Forward Without Stress



# The Full Rebrand Experience

## PHASE THREE: MARKET MOMENTUM

**Teaser + Promo Graphics To Promote Your Rebrand Launch** | You will receive various types of content to tease and promote your rebrand so that we get AS MANY as possible to view your new website, download resources and beyond

**Social Media Templates** ( *5xIG Feed Carousel Templates, 5xIG Story Template based on your request*) | Bespoke Social Media Templates To Help You Position Your New Brand On The Market And To Help You Communicate The New Direction Easily And Effortlessly

### Choose 3 Brand Collaterals

- **Services Guide**
- **Media Kit**
- **Business Cards**
- **Onboarding/Offboarding Guides**
- **Client Case Study**
- **or request your own collateral**

## PHASE FOUR: POST-LAUNCH PAMPERING

**1 Week Post Launch Support** | We do not leave you high and dry! Launches can be stressful (and somehow tech problems ONLY appear at this time 🙄) You will have Diana's full support and attention during this time

**1 Month Check-In** | We will check in with you to see whether there are any immediate changes needed to your website or other support you might need with your brand

**3 Month Check-In** | After 3 months we will schedule a time to go over your data and make informed decisions to ensure your brand funnel and website are on still on the right track



# The Full Rebrand Experience

INVESTING IN YOUR BRAND'S FUTURE

Your brand is far more than just another item on your to-do list—it is a vital component of your business success. **It serves the essential purpose of authentically representing you and connecting meaningfully with your target audience.** Our comprehensive process is designed to create **timeless, impactful brand elements that drive your business's growth.**

**With over seven years of honing my creative and technical skills, I've also mastered adapting to the unique demands of diverse industries.** Every project is managed in-house at Deeply Rooted Studio, ensuring personalized attention and consistency.

Choosing to work with DRS means placing your brand and business in trusted, skilled hands. **We are dedicated to transforming your brand into a powerful asset that captures your vision and engages your ideal customers effectively.**

TIMELINE: 4 - 6 MONTHS

2xUSD\$6,000

6xUSD\$2,000



# Decision Guidance for Choosing The Full Rebrand Experience

## Assess the Current State of Your Brand:

- **Consider a Full Rebrand** if your brand feels outdated or no longer aligns with your market positioning or business values. This service is crucial for businesses undergoing significant shifts in their target audience, product offerings, or overall business strategy.

## Consider Your Brand's Visual and Emotional Appeal:

- **Go for a Full Rebrand** if your current brand visuals and messaging do not evoke the desired emotions or actions from your audience. This service revitalizes your brand's visual narrative to connect deeply and effectively with your target customers.

## Determine Your Brand's Market Impact:

- **Opt for a Full Rebrand** if you're looking to make a stronger impact in your industry. This service is designed for businesses aiming to transform their presence and become a leading voice in their sector, requiring a fresh, innovative, and authoritative brand identity.

## Analyze the Cohesiveness of Your Brand Across All Platforms:

- **A Full Rebrand is necessary** when there is inconsistency across your marketing channels that could be confusing to your audience or diluting your brand's effectiveness. This service ensures uniformity and a seamless brand experience across all customer touchpoints.

## Evaluate Your Long-Term Business Goals:

- **Choose a Full Rebrand** if your long-term goals involve scaling, entering new markets, or significantly enhancing your brand perception. A full rebrand provides the foundational strength to support these ambitious plans with a cohesive and resonant brand strategy.

## Analyze Your Competitive Edge:

- **Consider a Full Rebrand** if you find your brand is not standing out against competitors in your industry. This service is perfect if your current branding falls short in showcasing the unique advantages or premium quality of your offerings. A full rebrand will differentiate your business, making it more memorable and appealing, which is critical in saturated markets.



# Your Choice Reflects Your Ambition

**Opting for "The Full Rebrand Experience" reflects a strategic decision to elevate your brand to its highest potential.**

This choice is not just about changing logos or color schemes; **it's about redefining your brand's essence and ensuring it resonates with your current and future markets.** It's suited for **visionary leaders** who are **ready to invest in their brand's longevity and influence**, setting the stage for **enhanced market presence** and **increased customer loyalty.**

This decision will position your business to not only meet the current market demands but also anticipate future trends and customer needs. **With "The Full Rebrand Experience," you're not just adapting; you're leading in your industry.**

By considering these factors, you empower yourself to make an informed choice that aligns with your business's growth trajectory and branding goals. **This service is for those who are ready to make a profound impact with their brand, ensuring it is a true reflection of their mission and vision.**



# The Launch Architecture

The Launch Architecture is tailored to help online business owners craft a seamless and engaging journey from free to paid content, focusing on enhancing every interaction within your sales funnel.

**Our goal is to elevate your lead conversion and intensify customer engagement at every step of the funnel, ensuring every interaction with your brand is as strategic as it is stunning.**



# The Launch Architecture

## LVL 1

**Consultancy Call (30min):** A targeted consultation to ensure your launch's strategic alignment and success.

**Visual Direction:** Tailored strategic design and creative direction to enhance your program's identity.

**Program Logo Suite:** Custom-designed logo suite for free and paid offers in your launch related funnel | one main logo, two secondary logos, and two icons

**Funnel Pages Design:** Design of essential funnel pages including Opt-in, Thank You, and Sales pages.

- **Opt-in Page Design:** Custom design for the lead magnet's opt-in page
- **Thank You Page Design/Tripwire:** Custom design of the Thank You page that serves as a tripwire, effectively converting new leads into customers
- **Long-form Sales Page Design:** Detailed and persuasive sales page creation..
- **Waitlist Page** (If applicable)

**Promotional Graphics Suite:** A comprehensive set of graphics for broad promotional use of your signature program and lead magnets

TIMELINE: 1-2 MONTHS

INVESTMENT: 3 X \$ 2500

INVESTMENT: 6 X \$ 1250

## LVL 2

← Everything in LVL 1

**Course Portal Setup in Kajabi/Kartra/Thrivecart Learn or other hosting platforms: Complete setup and design of your course portal, which includes:**

- Custom branded video thumbnails
- Branded banners and graphics to enhance the user experience
- Uploading of all course materials
- Video tutorials for platform management
- Custom Checkout Pages

**Tech Setup and Checkout Integration:** Comprehensive technical support to seamlessly connect your checkout pages and configure the technical components of your funnel, ensuring a smooth transaction process for your customers.

**Launch Email Setup and Design:** Expertly integrated campaign copy into your CRM or chosen platform, ensuring that your launch-related emails are not only technically sound but also visually compelling to engage your audience effectively.

TIMELINE: 2 - 3 MONTHS

INVESTMENT: 4 X \$2500

INVESTMENT: 6 X \$1700

INCLUDES  
2 WEEKS  
OF POST-  
LAUNCH  
SUPPORT





# Decision Guidance for Choosing the Right Launch Architecture Level

## Evaluate Your Content Delivery Needs:

- **LVL 1:** Suitable if your launch does not require delivering ongoing content or managing a learning portal.
- **LVL 2:** Essential if your launch includes courses, memberships, or any offerings that benefit from a structured learning environment. This level provides robust support for course portals, enhancing both the delivery and the user experience of your educational content.

## Consider the Scale of Your Launch:

- **LVL 1:** Adequate for smaller-scale launches that aim to reach a targeted audience with less complex needs.
- **LVL 2:** Recommended for large-scale launches aimed at a broad audience, where multiple touchpoints and higher levels of engagement are required to convert leads effectively.

## Determine Your Follow-up Strategy:

- **LVL 1:** Perfect for launches that may not need extensive post-launch engagement or complex follow-ups.
- **LVL 2:** If your strategy includes nurturing leads through sophisticated follow-up sequences or you need to implement automated sales processes, this level offers the necessary technical and design support to optimize these systems.

## Future-Proofing Your Launch:

- **LVL 1:** Gets you up and running with a solid foundation but might require additional updates or tech enhancements for future expansions.
- **LVL 2:** Prepares your brand for future growth with scalable solutions from the start, reducing the need for significant overhauls as your business evolves.

## Assess Your Brand's Maturity in the Market:

- **LVL 1:** Ideal for newer brands or those still establishing themselves in the market, providing all the essentials to make a strong impact.
- **LVL 2:** Best for established brands looking to reinforce their market presence with advanced features and a seamless, professional online interface.

## Personalized Consulting and Support:

Both levels offer consulting, but the depth and frequency of strategic interactions vary:

- **LVL 1:** Includes essential consulting to guide your initial strategy.
- **LVL 2:** Provides ongoing, detailed consulting to continually refine and adapt strategies throughout the launch process, ensuring alignment with evolving market conditions and business objectives.



# Your Choice Reflects Your Ambition

**Choosing between LVL 1 and LVL 2 should reflect not only where your business currently stands but also where you want it to go.**

If you foresee a need for evolving your launch into more complex offerings or anticipate a growth in audience size that requires robust systems, **LVL 2 provides the comprehensive support** needed to achieve these goals.

Alternatively, **if you're testing the waters with a new concept or have a limited scope for your current launch, LVL 1 offers a strong start that can be built upon as your needs grow.**

By guiding your decision based on these factors, you ensure that the service level you choose not only meets your current needs but also aligns with your future business growth and vision. *This tailored approach helps optimize your investment and maximizes the impact of your launch.*



# The Brand Director Partnership

**Unlock unprecedented profit, unmatched peace-of-mind and long-lasting impact with our brand director partnership experience:**

**A bespoke, full-circle service designed to seamlessly align your business aspirations with meaningful branding, personality-infused design and a phenomenal client experience.**

With a **resilient marketing plan, messaging** and **offers** that land, and a curated team of experts behind the scenes, you'll be able to say goodbye to the constant uncertainty and embrace a clear roadmap for growth.

# The Brand Director Partnership

**Our Brand Director Partnership is designed to provide flexible and comprehensive support tailored to the unique needs of your business.**

**Starting at \$5,500 per month** with a **minimum six-month commitment**, this service includes foundational components that are **customized** for **each client**.

STARTING AT \$5,500 PER MONTH [MINIMUM 6 MONTH COMMITMENT]

## HERE'S WHAT YOU CAN EXPECT:

### 1. **Strategic Brand Oversight:**

- Ongoing advisory and strategic guidance to ensure your brand aligns with business objectives and market opportunities.

### 2. **Custom Brand and Marketing Strategy Development:**

- Development and continuous refinement of brand and marketing strategies tailored to maximize impact and growth.

### 3. **Design and Creative Direction:**

- Professional design services for creating or enhancing brand elements, including logos, brand visuals, marketing materials, and digital assets.

### 4. **Integrated Marketing Management:**

- Coordination and oversight of your marketing campaigns across multiple channels to ensure consistency and effectiveness in brand communication.

### 5. **Performance Analysis and Reporting:**

- Regular analysis of branding and marketing efforts to assess performance and adjust strategies as necessary for optimal results.

### 6. **Technical and Digital Asset Management:**

- Management of digital platforms and technical assets, ensuring they are up-to-date and effectively supporting your brand's activities.



# Tailoring to Your Business Needs

While the above components form the foundation of our partnership, we understand that each business has unique challenges and opportunities.

## HERE'S HOW WE TAILOR OUR APPROACH:

- 1. Flexibility in Service Delivery:** Services are adapted in real-time to respond to new business developments, market trends, and changes in strategy.
- 2. Custom Support Based on Phase of Business:** Whether you're launching new products, entering new markets, or scaling operations, support is scaled to match your business phase.
- 3. Collaborative and Consultative Approach:** We work closely with you and your team, ensuring our efforts are deeply integrated with your internal goals and practices.



# Choosing the Brand Director Partnership means investing in a service that adapts as your business evolves.

**Our commitment is to not only meet but anticipate your needs, offering expert guidance and execution that propel your brand forward.**

This flexible yet structured approach ensures that while the foundational aspects of brand management are thoroughly covered, the specific application of these services can be adapted to fit the evolving landscape of your business.

**This way, your investment is always aligned with achieving the best possible outcomes, reflecting both the current and future needs of your enterprise.**



# Decision Guidance for Choosing the Brand Director Partnership

## Evaluate Your Need for Ongoing Strategic Support:

- **Choose the Brand Director Partnership** if you require continuous strategic oversight and creative direction. This service is ideal for businesses that need regular input to navigate complex branding and marketing landscapes, ensuring every decision aligns with long-term objectives.

## Consider Your Business Growth Stage:

- **Engage with a Brand Director Partnership** if your business is at a growth stage where scaling your brand effectively is necessary to capture and expand your market share. This service supports dynamic growth with adaptive branding strategies that evolve with your business.

## Determine the Scale and Complexity of Your Operations:

- **Opt for the Brand Director Partnership** if your business operations are extensive and involve multiple channels or customer touchpoints. This service ensures cohesive branding across all platforms, crucial for businesses aiming to maintain a unified presence in diverse markets.

## Analyze the Need for Integrated Marketing and Branding:

- **This partnership is suited** for businesses requiring an integrated approach to marketing and branding. If your promotional efforts need to be deeply intertwined with your brand identity to effectively attract and retain customers, this service offers the comprehensive expertise to make that happen.

## Assess the Requirement for High-Level Expertise:

- **Select this partnership** if your branding and marketing efforts demand expert knowledge and specialized skills. This option is perfect for businesses that need to outsource these critical functions to trusted experts to focus more on core business activities.

## Review the Demand for Long-Term Brand Development:

- **The Brand Director Partnership is crucial** if you aim to develop your brand for long-term success and recognition. This service goes beyond temporary solutions, providing ongoing development that helps establish your brand as a leader in its industry.



# Your Choice Reflects Your Ambition

Opting for the "Brand Director Partnership" is a strategic choice reflecting a commitment to not just sustain but significantly enhance your brand's market position.

This service is for **visionary leaders** who **understand** the **value of comprehensive, professional brand management** as a **critical component of business success**.

This partnership is more than a service; it's an **investment in transforming your brand into a distinguished and influential presence in your industry**, ensuring that it not only meets but exceeds the expectations of your evolving market.





# Exclusive Enhancements

**Discover our curated collection of Exclusive Enhancements, designed to provide specialized support where and when you need it most.**

This section features a select array of premium services including Priority Support Hours for urgent needs, Custom Stock AI Image Packages to elevate your visual branding, and our comprehensive Brand Your Podcast Package to help you extend your brand's voice. Each offering is crafted to **complement and enhance your main branding strategy**, providing **targeted solutions** that **cater to specific challenges**.

**Whether you need immediate technical assistance, bespoke visual content, or specialized branding for new platforms, our Exclusive Enhancements are here to ensure your brand shines in every encounter.**

# Priority Support Hours

**For those moments when you need swift, expert attention—whether it's a last-minute adjustment to your sales page, a technical hiccup before a launch, or any small yet urgent task—our Priority Support Hours are here to help.**

**This service is designed to provide you with immediate, high-quality assistance to ensure everything runs smoothly, exactly when you need it.**

## IMPORTANT NOTE:

To ensure the effectiveness and appropriate use of our Priority Support Hours, these are exclusively **reserved for urgent needs and minor adjustments, NOT for ongoing project work**. Each client is allocated **a maximum of 5 hours per month** under this service. This cap is designed to maintain the integrity and responsiveness of the support provided. Priority Support Hours are priced at a premium due to their on-demand nature and should not replace regular project engagements. This ensures that you receive immediate attention when truly necessary, while we maintain the high standard of service our clients expect.

## HOW IT WORKS:

- **Availability:** Access to priority support during business hours or by special arrangement after hours.
- **Flexibility:** Use these hours for any urgent tweaks, technical fixes, or quick consultations.
- **Rate:** Charged at a premium hourly rate, reflecting the on-demand, high-priority nature of the support.

**PRIORITY HOURLY RATE: \$250**

With Priority Support Hours, you can **rest assured** that your **urgent needs are handled promptly** and **professionally**, keeping your **projects on track** without the stress.

# Upgrade Your Experience

## CUSTOM AI STOCK IMAGES

Custom generated stock images based on your visual direction to enhance your brand perception and emotional connection.

### Perfect for when 🧑‍🎨

- you're launching a new program/membership
- want images that captivate your vision without flying to another country for a photoshoot
- you want to captivate your audience through visuals

**5 IMAGES: \$350**  
**10 IMAGES: \$550**  
**20 IMAGES: \$1000**

## BRAND YOUR PODCAST

Match all of your podcast assets to your new branding. From cover designs to promotional templates.

- Podcast Logo Suite (Main Logo, Icon And Sub Logo)
- Main and Secondary Podcast Cover
- Guest Cover
- Templates To Share With The Guests
- Launch Graphics
- Reel Template
- Custom Promotional Mockups

**\$1200**

## CREATIVE DIRECTION FOR PHOTOSHOOTS

Elevate your brand's visual storytelling with our Creative Direction Package for Photoshoots. Tailored to bring your brand's essence to life, this package includes comprehensive services designed to enhance every visual aspect of your branding.

- **Brand Photoshoot Guide:** We provide a detailed guide that outlines key themes, color schemes, props, and settings that align with your brand identity, ensuring a cohesive look and feel across all images.
- **Planned Photoshoot:** Coordination and planning of the photoshoot from start to finish, including location scouting, scheduling, and logistics to ensure a smooth, productive shoot day.

**\$1200**

need something else? send us an email!

# Hear It From Them

## 001. IN A FEW SENTENCES COULD YOU PLEASE DESCRIBE THE REASON(S) THAT YOU DECIDED TO WORK WITH DIANA?

I was immediately attracted to Diana's creative work from her instagram page - came across very innovative, professional and "against the grain" which is what i wanted for my brand.

## 002. WHAT WAS THE BEST PART OF WORKING WITH DIANA?

Diana takes on your project like it is her baby, she cared from our first call all the way to offboarding. It's been such a pleasure working with her - we only needed one kick off call and she immediately understood the vision and went over and beyond to deliver a mind blowing PREMIUM marketing campaign for my brand.

## 003. ARE THERE ANY TANGIBLE OR INTANGIBLE BENEFITS THAT YOU CAN ALREADY FEEL/SEE? (NUMBERS, CONFIDENCE...)

Absolutely - confidence in promotions and also attracting the specific target audience intended.

## 004. WHAT WOULD YOU SAY IF YOU WERE TO REFER DIANA TO SOMEONE WHO IS INTERESTED IN WORKING WITH DEEPLY ROOTED STUDIO?

We didn't pay her enough! absolutely jump on board with Diana - your business is in the best hands! worth the investment and MORE.

### Miwa Dasilva

Business Coach & Consultant  
Founder of Wealthy Woman  
Inc. and 9 To Freedom



[CLICK TO SEE WHAT WE'VE CREATED](#)

# Hear It From Them

## 001. IN A FEW SENTENCES COULD YOU PLEASE DESCRIBE THE REASON(S) THAT YOU DECIDED TO WORK WITH DIANA?

Diana is a long time friend of mine who just from day one... I knew she was ABSOLUTELY INSANELY Brilliant and SO incredibly talented. She CONSISTENTLY tested the boundaries for what was possible in Design and it is so much of the reason I decided to work with her. I am an against the grain type of founder - while everyone else goes left, I go right and Diana just understood that whole heartedly and truly captured that essence from day one.

## 002. WHAT WAS THE BEST PART OF WORKING WITH DIANA?

Hands down with out a doubt, her ability to go above and beyond time and time again. **This woman puts her heart and soul into EACH AND EVERY PROJECT!** She lives and breathes for her clients and DOES NOT SETTLE until you are obsessed with your results! Her intentional approach to client experience is also unmatched, every touch point is so carefully crafted and thought of to make you feel like the only person in the room... she is the best.

## 003. ARE THERE ANY TANGIBLE OR INTANGIBLE BENEFITS THAT YOU CAN ALREADY FEEL/SEE? (NUMBERS, CONFIDENCE...)

1000% Less stressed hahahaha I don't know a single thing about Kajabi which is what we decided to build our course on and she just went in there and did her magic! Because of her - **I was able to buy back more time doing other things in my business and enjoy the last few weeks of pregnancy I had left!**

## 004. WHAT WOULD YOU SAY IF SOMEONE ASKED YOU: WHAT'S REALLY DIFFERENT WHEN WORKING WITH DIANA [DEEPLY ROOTED STUDIO]?

Again, I would say her level of care and intentionality. Her ability to think outside of the box and really be side by side with you like a partner every step of the way. She hears you... she sees you... and ultimately i think when working with any designer who is supposed to capture your essence... that is the most important thing of all.

## 005. WHAT WOULD YOU SAY IF YOU WERE TO REFER DIANA TO SOMEONE WHO IS INTERESTED IN WORKING WITH DEEPLY ROOTED STUDIO?

Ummm... run dont walk. Like don't consider anyone else... you know that list of contractors you were tossing between? Throw it in the bin. It is a clear answer. HIRE HER,



**Lacey Madison**

Founder and CEO of Sir. Consulting Firm, Sir. Business Academy, and The Brand CEO Academy

# Hear It From Them

## 001. IN A FEW SENTENCES COULD YOU PLEASE DESCRIBE THE REASON(S) THAT YOU DECIDED TO WORK WITH DIANA?

I decided to work with Deeply Rooted Studio after seeing such a gorgeous portfolio of work! The quality and intention put into each design in Diana's portfolio is something I wanted for myself!

## 002. WHAT WAS THE BEST PART OF WORKING WITH DIANA?

Diana is truly amazing! She listened so carefully to exactly what we're needing and went above and beyond to create something so unique! The best part of working with her was the level of quality, and seamless communication when talking with her!

## 003. ARE THERE ANY TANGIBLE OR INTANGIBLE BENEFITS THAT YOU CAN ALREADY FEEL/SEE? (NUMBERS, CONFIDENCE...)

I feel an immediate sense of confidence in my ability to sell out my offer! The design's Diana created left me feeling like I have a million dollar product and I'm ready to walk into any sales call and show it off for the world to see!



**Maliquea Starnes**  
Coach, Consultant and  
Strategist

# Hear It From Them

[CLICK TO SEE WHAT WE'VE CREATED](#)

## 001. IN A FEW SENTENCES COULD YOU PLEASE DESCRIBE THE REASON(S) THAT YOU DECIDED TO WORK WITH DIANA?

I found Diana last year when searching for a designer that could work inside Kartra. As soon as I found her instagram I knew she was the best fit for my business - her work felt heart centered, authentic to each persons business and far more personal than a simple template.

## 002. WHAT WAS THE BEST PART OF WORKING WITH DIANA?

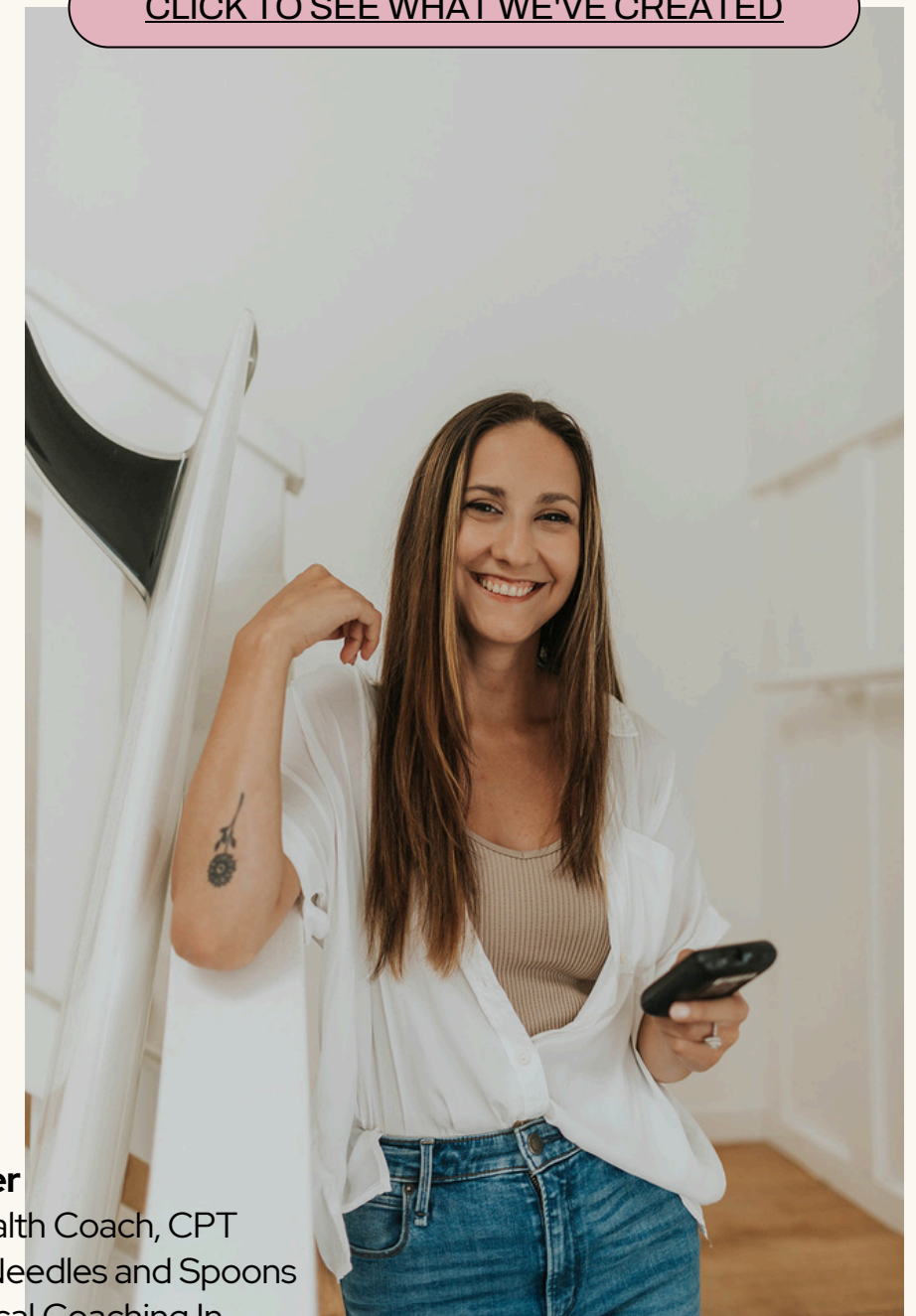
**There are no limits to what Diana can do.** I love that as soon as I bring an idea to her, she is 100% in. She has helped me not only relaunch my website and brand, but she goes above and beyond. She's helped me launch a directory, my podcast and even has gone out of her way to create a shot list for photoshoots (all while finding our studio for us from another country AND communicating with the photographer directly). I cannot tell you how much peace of mind it gives me as a business owner to have Diana on our side. I do not need to worry about my branding because it's in the best hands possible.

## 003. ARE THERE ANY TANGIBLE OR INTANGIBLE BENEFITS THAT YOU CAN ALREADY FEEL/SEE? (NUMBERS, CONFIDENCE...)

First 5 figure launch after Diana rebranded our website and sales page - Diana developed an entirely new brand for a sub-section of our business - More web traffic to our website after Diana helped us develop our blog and free resource hub

## 004. WHAT WOULD YOU SAY IF YOU WERE TO REFER DIANA TO SOMEONE WHO IS INTERESTED IN WORKING WITH DEEPLY ROOTED STUDIO?

No hesitation, do it. Diana is a one-stop shop to what normally would take hiring multiple different people to complete. DRS focuses on the best interest of your brand and makes sure it is a reflection of what you offer. **She is not just here to do the work and leave, she is IN your business and a part of bringing your project to life.**



**Lissie Poyner**

Diabetes Health Coach, CPT  
Founder of Needles and Spoons  
and The Ethical Coaching In  
Diabetes Certification

# Ready to Transform Your Brand?

*Let's Talk.*

You've explored the dynamic range of services in our Strategic Brand Solutions Catalog, each carefully designed to elevate and energize your brand.

If you're prepared to take bold steps towards a more impactful and resonant brand presence, we're here to make it happen. **We're here to help you take your brand 1st class.**

**Don't let another day pass with potential untapped.** Reach out to us today to discuss which of our tailored solutions best fits your vision and needs.

Fill out our inquiry form for a detailed discussion, or schedule a direct call to start your transformative journey with Deeply Rooted Studio.

Our team is ready to guide you through each step, ensuring a partnership that not only meets but exceeds your expectations.

[CLICK TO INQUIRE](#)

[CLICK TO SCHEDULE A FREE INITIAL CONSULTING CALL](#)



WE TURN BRANDS INTO PREMIUM EXPERIENCES

