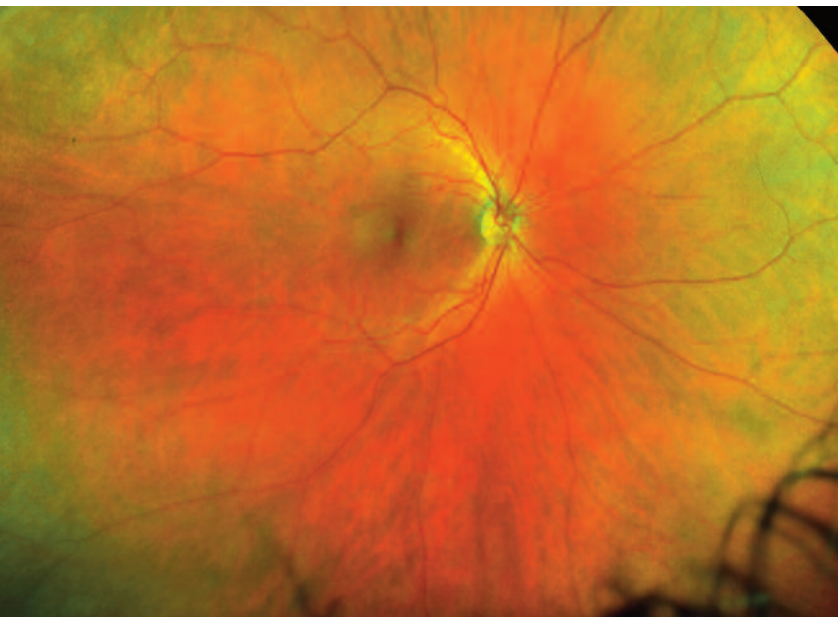
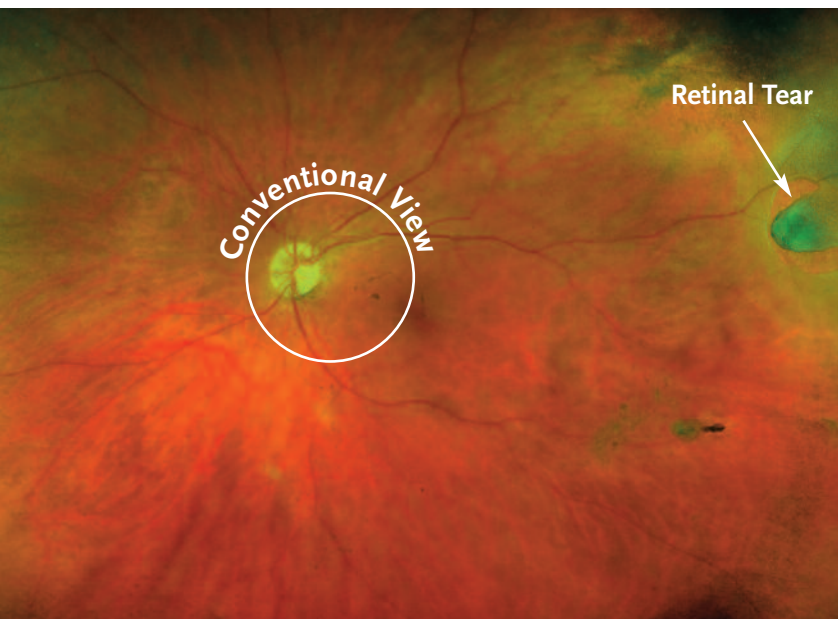


Helping you maintain healthy eyes

Check and maintain the health of your eyes with **optomap**[®]



An **optomap** image of a healthy retina



An **optomap** image of a retinal tear

Your doctor recommends an **optomap** as an integral part of your eye exam today. An **optomap** provides your doctor with a view of approximately 82% of your retina in a single capture and helps your doctor to evaluate your visual health.

Many eye problems can develop without warning and progress with no symptoms. Early on you might not even notice any change to your vision. However, diseases such as macular degeneration, glaucoma, retinal tears or detachments, as well as other health problems such as diabetes and high blood pressure can be detected with a thorough exam of the retina.

An **optomap** retinal image provides:

- Confirmation of a healthy eye or may detect the presence of disease.
- An overview or map of the retina, giving your doctor a more detailed view than can be achieved with other traditional tools.
- The opportunity for you to view and discuss the **optomap** images with your doctor at the time of your exam.
- A permanent record for your medical file, enabling your doctor to make important comparisons if potential problems show themselves at a future examination.

Getting an **optomap** is fast, easy, and comfortable.

PLEASE NOTE: Your doctor strongly believes an **optomap** is an essential part of your comprehensive eye exam. However, some health plans do not cover **optomap**, which means that you may be responsible for an additional fee.

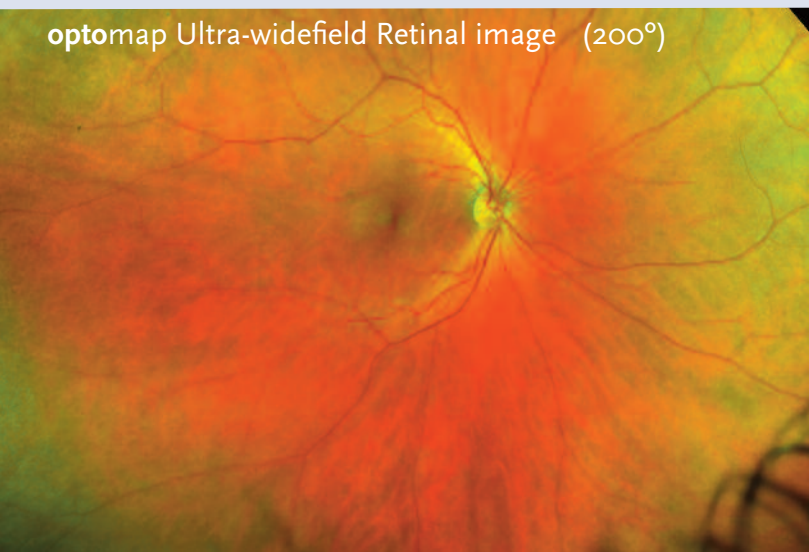
Optos, Inc.
67 Forest Street
Marlborough, MA 01752
USA
800-854-3039
optomap.com


ultra-widefield retinal imaging

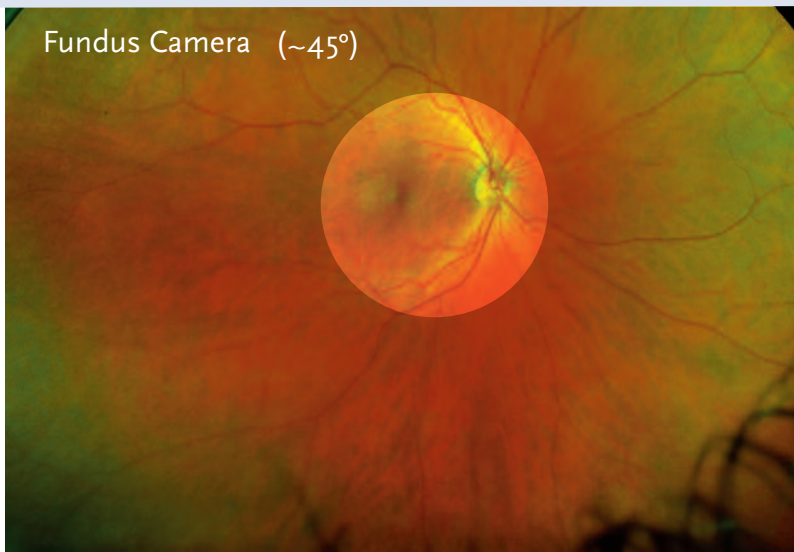
Comparison of Fields of View

An **optomap** retinal image compared to conventional devices in a single capture.

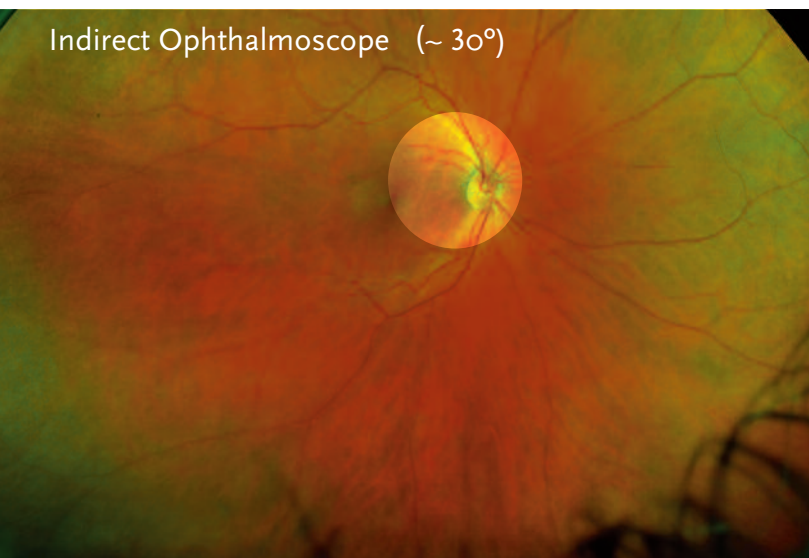
optomap Ultra-widefield Retinal image (200°)



Fundus Camera (~45°)



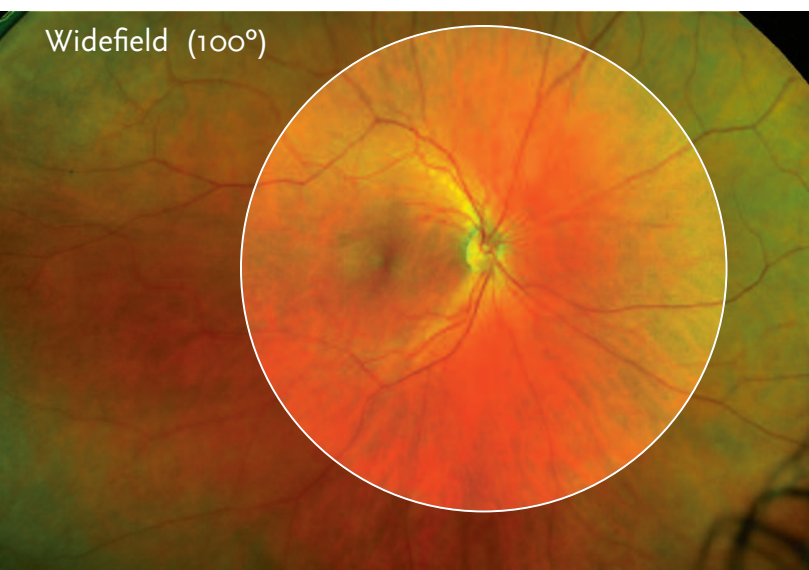
Indirect Ophthalmoscope (~30°)



Slit Lamp (with 90° diopter Lens)



Widefield (100°)



ETDRS Standard

