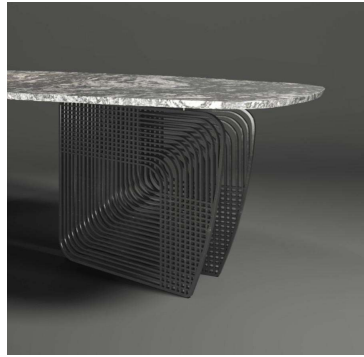


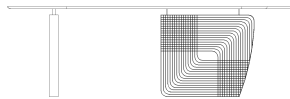
# P A R I S I I



## METAL WOVEN DINING TABLE

\*PRODUCT SHOWN MAY NOT DEPICT STANDARD OFFERING

### TECHNICAL DRAWINGS



### DIMENSIONS

MEASUREMENTS ARE APPROXIMATE

Overall Width : 96"

Overall Height : 30"

Overall Depth : 48"

Wood: Oak, Teak

Wood Finish:

- Available in all of our Oak Finishes for interior use /see Finishes and Fabrics page

- Available in two teak finishes for outdoor use /see Finishes and Fabrics page

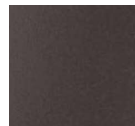
Top - Natural Stone:

- Available in all of our stone finishes /see Finishes and Fabrics page

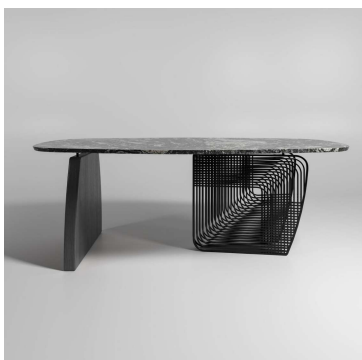
Metal Finish Options: Oil Rubbed Bronze or Gunmetal



Oil Rubbed  
Bronze



Gunmetal



scroll for detail

Inspired by ancient weaving traditions reimagined in metal and stone

The Woven Leg Dining Table is an elegant study in contrast—where solid material meets intricate pattern. Its sculptural base is composed of two distinct legs: one, a thick curved pedestal of softly contoured wood; the other, a bold V-shaped form of woven metal. The woven detail, inspired by delicate ancient basketry, gives the base its rhythmic texture and sense of movement.

A radiused stone slab rests above—its smooth surface counterbalancing the tactile depth below. Offered as a complete table or as a standalone base for custom tops, the design explores the interplay of craft, geometry, and light. The result is both grounded and ethereal: a table that celebrates the meeting of nature's materials and human handwork.

[www.PARISIfurniture.com](http://www.PARISIfurniture.com)