

HOLIDAY/WINTER 2022/23

STYLE ■ COMFORT ■ IDEAS ■ REAL ESTATE

ourhomes

L O N D O N A N D M I D D L E S E X C O U N T Y

NOSHING ON
GNOCCHI

LIGHT
MY FIRE

living
THE DREAM

BACK TO
BLACK

CHANNELING
European style



Home Automation Available!



© 2021 Budget Blinds, LLC. All Rights Reserved. Budget Blinds is a trademark of Budget Blinds, LLC and a Home Franchise Concepts Brand. Each franchise independently owned and operated.

We Do It All With You

We're your local experts backed by the #1 provider of custom window coverings in North America. We partner with you every step of the way—*design, measure and install*—because we think everyone, at every budget, deserves style, service and the best warranty in the business.



226.289.7881
BudgetBlinds.com/London-On



welcome to amazing ... and start walking on "sunshine"
FOR SIMPLY THE BEST LUXURY HARDWOOD FLOORING



Simply the Best ...
PRODUCTS
CUSTOMER SERVICE
INSTALLATION
WARRANTY

519 697 7290 | info@sunshineexotichardwoods.com | www.sunshineexotichardwoods.com



Service Area — London, Middlesex County and other select communities

FINANCING OPTIONS AVAILABLE



UNMATCHABLE

When you find the perfect colour, **nothing else will do**. Perfection comes from our paint and our proprietary Gennex® colourants, together, creating results that are breathtaking.

Rely on Benjamin Moore® for premium quality and Gennex Colour Technology, which makes our long-lasting colours, all 3,500 of them, one-of-a-kind.

Unmatchable.



WALL: *Shadow 2117-30,
Aura® Matte*

Clancy's Rainbow

1030 Adelaide St N (at Cheapside) | 519.434.3201 | clancysrainbow.com

Clancy's Rainbow

595 Fanshawe Park Rd W (No Frills Plaza) | 519.472.1116 | clancysrainbow.com



©2020 Benjamin Moore & Co. Aura, Benjamin Moore, Gennex, and the triangle "M" symbol are registered trademarks licensed to Benjamin Moore & Co. Colour accuracy is ensured only when tinted in quality Benjamin Moore® paints. Colour representations may differ slightly from actual paint. 6/20



CCR BUILD+REMODEL
CREATING HOME

519.472.7461
info@ccrbuilding.com
ccrbuilding.com



Built to a higher standard.

Backyard Escape Studios creates more space for your life! Whether you require a home office, art studio, personal gym, yoga studio, or cozy guest retreat, the possibilities are only limited by your imagination.

Combining craftsmanship and modern aesthetics, we design and build our Modern Sheds and All-Season Studios with love, attention to detail, and enduring quality founded on high-grade standards.

The flexibility of a Backyard Escape structure is sure to fulfil every creative need. We offer poolside bars, full sized motorized roll-up shutters for easy and secure access, and even eco structures with live roofs. We will be sure to provide you with a design piece that not only adds value to your property but also makes you want to spend time in your backyard to enjoy a place that will last a lifetime.



Sunrise Rollups and Shades, formerly known as DDK Security and Shade, is located in Port Stanley, Ontario and serves all of Southwestern Ontario by offering energy savings, security and protection to homes. Manual or motorized controls ensure smooth, convenient operation of our roll shutters and screens. Both the shutters and the screens roll up into a box for an aesthetically pleasing look! We use only fine quality European and U.S.-manufactured parts in all of our roll shutters and screens. This way our customers are assured of a long-lasting, high quality product that is customized. Sunrise Rollups and Shades can provide you with the benefit of cost-efficiency and quality workmanship combined with a quality product!

CONTACT US TODAY FOR YOUR QUOTE!

info@backyardescapestudios.ca • 226-219-6062 • www.backyardescapestudios.ca

CONTACT US TODAY FOR YOUR QUOTE!

www.ddksecurityandshade.com • ddkrollups@gmail.com

SOME OF THE PLACES YOU CAN FIND US.

You can pick up your free copy of OUR HOMES at the following locations:



- Oak and Linen Home 21556 Richmond St, Arva
- Cottage Culture 148 King St, Hensall
- Foodland 10166 Glendon Dr, Komoka
- Home Hardware 22428 Jefferies Rd, Komoka
- Floor Source 4333 Colonel Talbot Rd, Lambeth
- Aqualuxe 1350 Fanshawe Park Rd W, London
- Backyard Escape Studios 36446 Bush Line, London
- Carver Sheet Metal 176 Rectory St, London
- CCR Build + Remodel 2416 Sunningdale Rd W, London
- Clancy's Rainbow 595 Fanshawe Park Rd W, London
- Covers Canada 1950 Hyde Park Rd, London | 297 Exeter Rd, London
- Custom Shades Of London 1422 Fanshawe Park Rd W, London
- East Side Marios 94 Fanshawe Park Rd E, London
- Featherfields 1570 Hyde Park Rd, London
- Food Basics 1299 Oxford St E, London • 1200 Commissioners Rd E, London
- Foodland 2295 Wharncliffe Rd S, London
- Freshco 981 Wonderland Rd S, London • 1080 Adelaide St N, London
- Golden Windows 49-309 Exeter Rd, London
- KGK Science 275 Dundas St, Suite G02, London
- Living Lighting 1673 Richmond St, London
- Metro 1030 Adelaide St N, London
- Rahim Charania Real Estate Group 380 Wellington St, Tower B, London
- ReDecor Consignment 1055 Sarnia Rd, London
- Rona - Moffatt & Powell 1282 Hyde Park Rd, London
- Sifton Properties Ltd 195 Dufferin Ave, Suite 800, London
- Sloan Stone Design 75 Midpark Cres, London
- Steel Grill Catering 1674 Dundas St E, London
- Superking Supermarket 785 Wonderland Rd S, London
- The Realty Firm 395 Wellington Rd. Unit 11B, London
- The Table & Chair Co 44 Meg Dr, London
- The Wood Studio 365 Horton St E, London
- Ultimate Bath Systems 932 Leathorne St, London
- Foodland 184 Main St, Lucan
- Foodland 291 Colborne St, Port Stanley
- Sunrise Rollups and Shades 36446 Bush Line, Port Stanley
- Don West Custom Homes 15 Barrie Blvd, St. Thomas
- Geerlinks Home Hardware 295 Wellington St, St. Thomas

OUR HOMES is also sent via Canada Post direct mailing to targeted neighbourhoods and local homes-related businesses



Many of our advertisers also have OUR HOMES on display in their establishments for you to pick up and enjoy! Look for them while visiting throughout the area!



REGIONAL PUBLISHERS Jamie Jefferson
Georgette McCulloch

REGIONAL MANAGING EDITOR Megan Smith-Harris

REGIONAL PRODUCTION MANAGER Julia Dempsey

MARKETING & ADVERTISING Jamie Jefferson, 705.730.3827
jamie.jefferson@ourhomes.ca

REACH US EASILY: firstname.lastname@ourhomes.ca

OUR HOMES is a registered trademark of OUR HOMES MEDIA GROUP INC. OUR HOMES London and Middlesex County is published four times a year.

OUR HOMES is distributed to residents of London and Middlesex County via direct mail and precision targeted neighbourhood mail. Copies of OUR HOMES are available for free pick up at high traffic locations throughout the region. OUR HOMES is distributed to select business leaders via direct mail.

Please send all letters and/or feedback to OUR HOMES Magazine, 25 Elgin St., Collingwood, ON Canada L9Y 3L6. Or email us at editor@ourhomes.ca. All letters received are subject to editing for grammar and length.

OUR HOMES MEDIA GROUP INC:

EDITORIAL	PRODUCTION
EDITOR-IN-CHIEF Georgette McCulloch	PRODUCTION DIRECTOR Lynn Derrick
ASSOCIATE EDITOR Heather Wright	PRODUCTION MANAGERS Julia Dempsey, Kelly Donaldson, Tracy Shuttleworth
DIGITAL EDITOR Rachael Havens	OPERATIONS
MANAGING EDITORS Walter Franczyk, Rachael Havens, Donna Luangmany, Gina Makkar, Sara Martin, Drew Beth Noble, Melissa North, Megan Smith-Harris, Gabrielle Tieman-Lee, Janet White Bardwell, Heather Wright	MANAGING DIRECTOR, SALES & MARKETING Jamie Jefferson jamie.jefferson@ourhomes.ca
ART	MANAGING DIRECTOR, OPERATIONS Georgette McCulloch
ART DIRECTOR Tara Chattell	ACCOUNT EXECUTIVE & DIRECTOR OF DISTRIBUTION Lisa Ormsby
ASSOCIATE ART DIRECTORS Sheila Britton, Robynne Sanguiliano	BUSINESS DEVELOPMENT Kelly Craig
DIRECTOR OF PHOTOGRAPHY Jason Hartog	ACCOUNTING Tyler Annette

CONTRIBUTORS

Larry Arnal, Sheila Britton, Stephani Buchman, Mike Chajecski, Tara Chattell, Blynda DaCosta, Nigel Eves, Jason Hartog, Lisa Kooistra, James C Lee, Sandy MacKay, Jenelle McCulloch, Tamarisk McNalty Stephens, Jackie Noble, Keily Ramos, Lynne Richardson, Erin Rochon, Amanda Shields, Megan Smith-Harris, Patti Wilson

Advertisements and the content, including photos, of advertisements published within OUR HOMES magazine are supplied solely by the advertiser and neither the publisher nor OUR HOMES Media Group Inc. accept responsibility for opinions expressed in advertisements or for copyright issues with regards to photos, advertising copy and advertisements, nor shall they be held liable thereby. By act of reading this publication, all advertisers and readers agree to indemnify and hold harmless both OUR HOMES Media Group Inc., and the publisher thereby. Copyright ©2022 OUR HOMES Media Group Inc. All rights reserved. Reproduction without permission is prohibited.

OUR HOMES CAN BE FOUND IN THE FOLLOWING MARKETS:

- Barrie/Orillia/Midland • The Golden Horseshoe • Grey Bruce • London • Muskoka
- Ottawa • Peterborough • Southern Georgian Bay • Toronto & York Region
- Wellington County/Orangeville/Caledon/Waterloo Region • Windsor



LONDON MAJOR APPLIANCES

www.londonmajorappliances.com

Since 1959



Acclaimed for its exquisite design and advanced technology, the Monogram Professional Range is redefining luxury appliances one detail at a time.



Since 1959, we have been selling and servicing most major appliance brands. Let our team of experts assist you in selecting the right product to suit your style, taste and budget. With free prompt delivery, in-house service technicians, and a price match guarantee, why shop anywhere else? **EXPERIENCE THE DIFFERENCE...YOU'LL BE GLAD YOU DID!**

45,000 SQ. FT. WAREHOUSE!

COME VISIT OUR
12,000 SQ. FT. SHOWROOM!
185 Hamilton Rd., London
519.432.1862
MON-FRI: 10-8
SAT: 10-5
SUN: 12-5



LOCALLY OWNED & OPERATED

SALES, SERVICE, PARTS • FREE LOCAL DELIVERY • PRICE MATCH GUARANTEE

editor's note

Winter is upon us

and *entre nous*, I'm trying hard to like the season a little more. I'm not a skier, skater or snowshoer so winter has become more of an endurance challenge than a joyful romp in the snow. I know. I'm Canadian. I'm supposed to be genetically programmed to embrace the cold. I'll grant you that snow is really pretty, but what about the blizzards, slush and painfully short days?

The silver lining for me lies in the fact that I'm indoors a lot more and have come to truly appreciate my cosy, well-appointed home. Come December, out come the wool tartan throw cushions and sheepskin throws. I happily read by the fire, bake bread and whip up cheese fondue for my family.

I also whole-heartedly embrace the holidays. We have a dozen oversize bins brimming with seasonal décor and I'm now counting the days until I can officially break out the balsam fir candles and begin festooning the world with cedar garlands. In this issue, you can learn how other Canadian families celebrate their time-honoured traditions in *How Do You Holiday?*

In *A Dream Come True*, we explore London's most recent Dream Lottery Home built from the ground up by Woodfield Design + Build with stylish interiors by Red Acorn Studio. On the opposite end of the design spectrum, *Home For The Holidays* showcases interior decorator Lisa Barron's inviting home, which exudes European charm and sophistication. But wait! There's more. We've got a delicious gnocchi recipe, a fun craft activity that cleverly upcycles old sweaters, current real estate news and lots more design inspiration.

So, however you holiday, I hope that this festive season is filled with warmth, fellowship, delicious food and a surplus of laughter. I'll sign off with this uplifting quote from Rainer Maria Rilke; "And now we welcome the new year. Full of things that have never been."

Cheers!



Megan Smith-Harris, Managing Editor
megan.smithharris@ourhomes.ca

Follow us   
Sign up for our newsletter ourhomes.ca/newsletter

online Get more at ourhomes.ca



HOME • BACKYARD • GIFTS • KIDS



FEATHERFIELDS
THE BIRD & GARDEN STORE



Visit Our New Wortley Rd Location

173 Wortley Rd, London • 1570 Hyde Park Rd, London
Shop online at www.featherfields.com

NEW BUILDS ♦ RENOS ♦ SPACE PLANNING ♦ STYLING



Sarah Atiq
INTERIORS

Thoughtful design.
Beautiful living.

info@sarahatiqinteriors.com ♦ www.sarahatiqinteriors.com

ReDECOR

CONSIGNMENT

FINE FURNISHINGS & HOME ACCENTS

ReDISCOVER Fabulous Finds Today, Tomorrow ...



SEE WHAT'S NEW IN STORE!
GO TO redecorconsign.com/see-whats-in-store/
AND WATCH OUR FRIDAY NIGHT VIDEOS

ReDECOR's showroom features 3000 square feet of gently used, upscale furniture and home accessories at a fraction of the original price. Contemporary, antique, vintage, traditional or modern decor have been carefully selected for your consideration. ReDECOR offers the rare combination of elegance with value. Unique, one-of-a-kind finds are here today, sold tomorrow.

1055 Sarnia Road, London ON N6H 5J9 | 226.884.4144

WWW.REDECORCONSIGN.COM



CONTENTS

HOLIDAY/WINTER 2022/23



20

50



18

LOCAL FEATURES

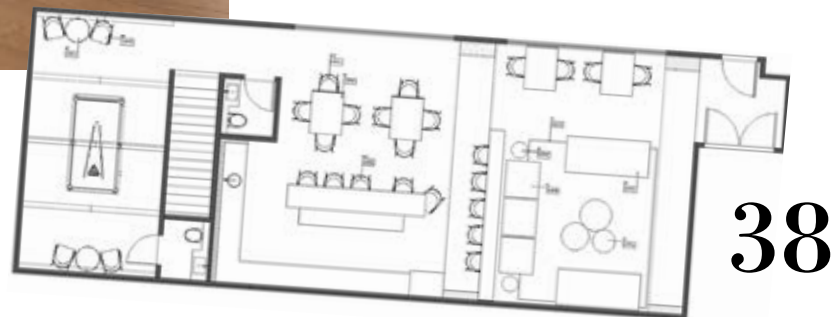
- 18 Style Picks** 'Tis the season to spruce up your home for the new year.
- 28 Feature Home** Discover what dreams are made of inside the swoon-worthy Lottery Dream Home.
- 38 Spotlight** A London-based architectural-concept design company inspires new thinking.
- 50 Feature Home** A European aesthetic transforms this Ilderton home.
- 64 People & Places** Local pros share the latest products and design trends.



28

ON THE COVER

Check out the stunning interiors of the London Dream Lottery home, a stylish, fully-furnished modern farmhouse valued at over \$1.7 million. Story, page 28.



38

Modern Window Design Solutions

Take your project to new heights with custom Canadian-made windows from North Star. Our windows are endlessly customizable, easy to spec, and easy to install – making them the perfect option for renovations or new construction projects.

Visit us online to learn more about the North Star advantage.

northstarwindows.com



PROUDLY A PART OF
CORNERSTONE
BUILDING BRANDS

CONTENTS

HOLIDAY/WINTER 2022/23



74



48



24



40

DEPARTMENTS

- 10 **Editor's Note**
- 16 **Advice** Burning Questions
- 20 **Cooking At Home** Creamy Pesto Gnocchi
- 22 **Holiday Traditions** Multicultural Holidays
- 24 **Design Ideas** Scandi Style
- 40 **Double Take** Sweet Dreams
- 44 **Design Ideas** Basic Black
- 46 **Holiday Hints** Our Staff Wishlist
- 48 **Good Taste** Figgy G&T
- 60 **Birding** Winter Birds
- 62 **Crafty Ideas** Dried Oranges
- 70 **Real Estate** To Rent or To Buy
- 72 **Cooking At Home** Caramel Cheesecake
- 74 **Holiday Trends** Festive Décor-ables
- 78 **Projects** Cosy Sweater Weather
- 80 **Home Resource Directory**
- 82 **Finishing Touch** Solid Bedframes



82



"I am so excited to be using the Square D™ wiring devices from Schneider Electric in my home. Plates have typically been a standard for homes and it is so great to see they have come such a long way in their design. I especially love all the colours there are to choose from."

- Aly Velji

Designer, Alykhan Velji Designs/The Style Guys



- Upgraded aesthetics
- Smart connectivity
- Available in 4 matte finish colours



Learn more

se.com/ca/wiringdevices



Photographer credit to: Kokemor Studio

©2022 Schneider Electric. All Rights Reserved. Schneider Electric | Life Is On, Square D are trademarks and the property of Schneider Electric SE, its subsidiaries and affiliated companies.



PHOTO: SANDY MACKAY



GATHER 'ROUND

Designer **Tamarisk McNalty Stephens** shares her ideas.

FEW THINGS ARE MORE WELCOMING IN A HOME THAN A FIREPLACE.

What was once a necessity for the daily functioning of a household (heating, cooking, baking, boiling water, etc.) has become somewhat redundant with advances in mechanical systems. However, it is difficult to substitute the sensory experience of the warm glow, flickers and crackles of an authentic wood-burning fireplace. The hearth remains the centre of a home and is a hallmark of emotional comfort to the human psyche.

Whether renovating or building new, installing a fireplace (wood burning, gas or even electric) creates a natural focal point and gathering place. The ideal location is logically within a common area, but it is also nice to view and enjoy the fireplace from adjoining spaces, such as the kitchen. The location of the chimney and venting requirements may dictate placement.

Many argue that the heat from a wood-burning fireplace is unrivalled, but it also comes with a certain level of commitment. Firstly, you need to cut or purchase a supply of seasoned firewood and have a place to stack and store it that is protected from the elements, such as an outdoor storage shelter or attached garage. You also need a storage rack or containment unit inside that can hold a supply for a day or

two. Although there are endless images of beautifully curated stacks of firewood inside homes, the reality is quite different! Firewood is messy – and so is the process of emptying and disposing of the ashes. Chimney cleaning and maintenance are also a must. However, an often-overlooked benefit of a wood-burning unit is the opportunity to slow down and create a daily ritual of getting the fire going in the late afternoon or early evening during the colder months – a good excuse to take a moment of repose while you do it!

There are parameters regarding the appropriate clearances of various units from combustible materials, often making the footprint of a wood-burning stove or fireplace considerably larger than a gas fireplace (and

PHOTO: SANDY MACKAY



OSBURN: Duplex Fireplace Tool Set and Equiss Freestanding Log Holder

much more than electric). For wood burning and gas stoves, there are also requirements for the surround to be faced with non-combustible materials, including honed natural stone, slate, porcelain tile and metal. Always plan ahead and work with a professional to ensure you can accommodate the unit of your choice.

One obvious advantage of a wood-burning unit is that it provides a heat source in the event of a power outage, which can offer peace of mind. This isn't always the case with a gas unit. However, for day to day, a gas stove provides heat at the touch of a button and doesn't require cleaning or managing of wood. Just be sure to select a unit with realistic-looking logs. The temperature of a gas or electric unit is set with a thermostat and is much easier to regulate than a wood-burning stove.

Traditionally, an authentic chimney breast will extend from the floor to the ceiling (avoid stopping it above the firebox). Balance the chimney breast in the space, while keeping the centre bay the widest/largest. If installing a gas or electric fireplace that is horizontal in proportions (wider than it is tall), ensure that it is raised off the floor. The design of the fire surround should take into consideration the scale of the unit, the chimney breast and overall space to ensure the proportions are harmonious. The design of the mantel and surround will be affected by the unit you select, as manufacturers provide specific dimensions regarding clearances.

Even though the iconic and substantial traditional masonry chimneys are no longer commonplace (a lovely addition to a new build – albeit costly!), it is still important to be sympathetic to traditional architectural design if you're installing a wood or gas fireplace. If you can afford a chimney, be generous and make it look as authentic as possible by cladding the exterior in brick or stone and using traditional proportions.

Always consult a professional when installing any type of fireplace. Also, check with your insurance company about extending coverage. **OH**

Offering the latest in electric fireplace technology!



MODERN FLAMES

Watch the video

GUILDWOOD
Lighting & Fireside

Lighting | Fireplaces | Furniture | Art | Mirrors | Decor

Mon.-Fri. 8:30-5:30 & Sat. 9:00-5:00

5 York Street, London • 519.438.6161 • guildwoodlighting.ca



PHASE 1 SOLD OUT
NOW SELLING PHASE 2



LANDINGS
PORT STANLEY

NOW SELLING CONDOS

- 3 models to choose from – Bow, Port & Stern
- 1250-1325 sq. ft. of living space on the main floor
- Vaulted ceilings, gas fireplace, single or double garage
- Plus many more standard features!

WWW.PORTLANDINGS.CA
519.870.1335



1



2

DECORATING *ideas*

Make your home your own
with our latest style finds.



3



4



5



6

HanStone Quartz

Vicostone's
Splendix

Laminam
I Naturali

1 LIVING LIGHTING LONDON

Chandelier Redux

Make an elegant statement with this modern take on the traditional six-light chandelier. Part of the Arrington collection and perfect for a dining area, traditional kitchen or main living space. Steel with a polished-nickel finish.

1673 Richmond St. N., London | 519.667.3022
livinglightinglondonnorth.xolights.com

2 AQUALUXE LONDON

Faucet

This elegant Litze SmartTouch pull-down faucet has an angled spout and knurled handle. Brizo blends style with modern engineering, which works with both traditional and modern spaces. Available in matte black, luxe gold, chrome, polished nickel and stainless steel.

1350 Fanshawe Park Rd. W., London | 519.641.7555 | aqualuxelondon.com

3 THE TABLE & CHAIR CO.

Modern Dining

This stunning grouping from Canadel features a rectangular table paired with a modern chair – all are pecan, washed with a matte finish. The chair is available in ivory or black faux leather.

44 Meg Dr., London | 519.668.1200 | tableandchair.ca

4 GUILDWOOD LIGHTING & FIRESIDE

Electric Fireplace

The Orion Slim from Modern Flames is a simple slide-in, single-sided unit that makes a big impact. The Orion Multi can be viewed from four vantage points. Pick the colour of your flame and hear the crackle.

5 York St., London | 519.438.6161 | guildwoodlighting.ca

5 CLANCY'S RAINBOW

Colour of the Year

After a decade of understated neutrals, be bold in 2023 by embracing the Benjamin Moore Colour of the Year: Raspberry Blush. Basking somewhere between a bright red and a radiant coral, this warm, vibrant colour will revitalize any space in your home.

595 Fanshawe Park Rd. W., London | 519.472.1116
1030 Adelaide St. N., London | 519.434.3201
clancysrainbow.com

6 SLOAN STONE DESIGN

Solid Surfaces

High performance solid surfaces elevate every space. Calacatta Extra by HanStone Quartz features ribbons of taupe, grey and onyx. Vicostone's Splendix has big veins and a deep grid. Laminam's I Naturali has grey veining on a pure white background.

75 Midpark Cres., London | 519.652.3100 | sloanstonedesign.com

7 DALE + CO

Stoneware Serving Dishes

Crafted from non-toxic, mineral-rich clay, these sleek stoneware serving dishes are by Gharyan, a sustainable, fair-trade company. These pieces are naturally heat-and-shatter resistant.

17 Market Pl., Stratford | 519.305.1133 | daleandcompany.ca OH



7

online Get more recipes at ourhomes.ca/blogrecipes

INGREDIENTS

- 2 Tbsp butter
- 2 Tbsp flour
- 1 ½ cups milk, heated
- Prepared gnocchi
- ¼ cup pine nuts
- ¼ cup parmesan, grated
- 1 cup fresh basil leaves
- 2 cups fresh spinach
- 1 cup mozzarella
- Salt and pepper

INSTRUCTIONS

Preheat the oven to 350°F.

To make the béchamel, melt butter in a heavy-bottomed saucepan.

Stir in flour and cook, stirring constantly until the paste bubbles a bit, but don't let it brown – about 2 minutes.

Add hot milk, continuing to stir as the sauce thickens.

Add salt and pepper to taste, lower the heat and cook, stirring for 2 to 3 minutes more.

Remove from heat and let cool slightly.

Put béchamel in a blender with pine nuts, parmesan, basil and spinach. Blend until smooth.

Season with salt and pepper to taste.

Place gnocchi in an even layer in a medium-sized oven-safe dish and pour sauce on top.

Cover with a layer of mozzarella cheese.

Bake for 25-30 minutes until golden. **OH**



BAKED GNOCCHI

with *Pesto Béchamel*

RECIPE AND PHOTOGRAPHY **JENELLE MCCULLOCH**

THIS VIBRANT BAKED GNOCCHI STARS A CREAMY PESTO BÉCHAMEL MADE WITH FRESH BASIL AND SPINACH.

KGK Science
Advancing Health & Wellness through Clinical Research

BECOME A HEALTH HERO

JOIN OUR NATURAL HEALTH RESEARCH TRIALS

Studying:
Probiotics & Amino Acid Foods
Dietary Supplements
Sleep Improvement
Cannabis & Hemp
Psychedelics

JOIN TODAY

www.kgkscience.com/research

1-833-JOIN KGK

KitchenAid

- Award Winning Service
- Free Local Delivery*
- Price Match Guarantee*

*See sales associate for details

ARVA APPLIANCE CENTRE

Locally owned & operated for over 60 years!

We carry many of the top-named brands such as: **Jenn-Air, KitchenAid, Maytag, Whirlpool**, and many more. As a **member of BrandSource** we're able to offer the best value everyday.



STORY MEGAN SMITH-HARRIS

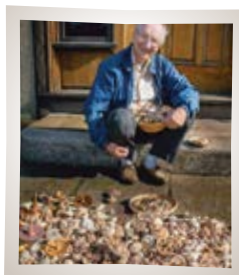
How Do You HOLIDAY?

MULTICULTURAL HOLIDAY TRADITIONS

Canada opens its arms to people from many different cultures. During the winter months, family celebrations proliferate and many of us raise a glass (or a fork) to mark the arrival of cherished holidays and reconnect with loved ones. Here's a sampler of holiday traditions from local families.

Bermudian Holiday Breakfast

Sacha Welsh, a fertility nutritionist, originally hails from Hamilton Parish, Bermuda. While attending boarding school at Albert College in Belleville, she met her future husband, Owen Welsh, now a vice-president at the Canadian Football League. The couple have three young daughters: Whitney, 6, Victoria, 4 and Cassia,



2. On Christmas morning, Sacha cooks up a delicious piece of her island heritage and serves a traditional Bermudian breakfast to

Josée Lafontaine, who operates a retirement residence, keeps her father's tradition alive. "At midnight my staff and I hang Christmas stockings on every resident's door," she says. "Each one contains chocolate, a tangerine in the toe and a wooden top, hand-turned by my 99-year-old father who still makes these classic wooden toys in his woodshop."

Kwanzaa

Dewitt Lee, founder and president of Emancipation Month, has celebrated Kwanzaa (a pan-African holiday that began in 1966) his entire life. Every year, Dewitt and his partner, Suzette, enjoy sharing the week-long holiday with their six children. Kwanzaa begins on December 26 and ends on January 1, culminating with the Karamu feast when the family "samples foods from around the Caribbean, Africa and soul food from North America," says Dewitt. "One of the great traditions we have is shutting down the TV and social media. We focus on reading and writing about the Nguzo Saba, also



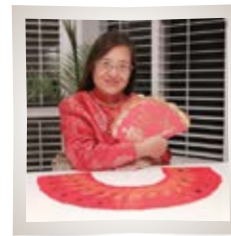
her family: boiled codfish and potatoes with tomato and onion sauces along with sides of boiled eggs, banana and avocado slices.

Stockings Hung With Care

Fred Lafontaine grew up in Québec during the depression. Money was tight, so at Christmastime there weren't a lot of gifts, but he and his siblings always received a stocking with chocolate, a hand-turned wooden top and a tangerine – considered an exotic treat

known as the Seven Principles or the Black Value System, which include: *Umoja* (unity), *Kujichagulia* (self-determination), *Ujima* (collective work and responsibility), *Ujamaa* (cooperative economics), *Nia* (purpose), *Kuumba* (creativity) and *Imani* (faith)."

Chinese New Year



Ruowen Leung, a children's book author, immigrated to Canada from Tianjin, China in the 1980s. Now a mother to two adult children,

Kevin, 28, and Robin, 25, she carries on holiday customs she grew up with. "Traditionally, Chinese New Year falls at the end of January or the beginning of February and continues for 15 days," says Ruowen. "There are dozens of rituals but here in Canada, we follow only a few of them."

"Parents, uncles and aunts give red envelopes containing money to the younger generation and to anyone who isn't married. We buy red letters and create lucky words with them." Her family also eats jiao zi (pork dumplings) before midnight and enjoys vegetable dumplings after midnight, followed by sweets, which symbolize a sweet future filled with happiness, good luck and prosperity.

Hybrid Hanukkah

"I was born Jewish and though I am not religious, I have grown to love the culture," says Avery Saltzman, co-artistic director of the Harold Green Jewish Theatre. "Hanukkah is a time of giving: the giving of oneself to family young and old. And it's also a delicious time of potato pancakes topped with applesauce." Avery and his husband, Kevin Dunlop, celebrate Christmas with Kevin's extended family, including nephews and nieces who excitedly await the arrival of St. Nick. After celebrating with their respective families, the couple have created their own hybrid holiday. "We plug in our electric Christmas tree adorned with ornaments both Jewish and not, switch on our gas fireplace and celebrate our love for one another by ordering Chinese food." **OH**



Dream it...
Build it...
Live It!

FREE stainless steel appliance package worth over \$7,300 (inc. HST) for any new home sold!

Look for us in **Orchard Park Meadows** and **West Lorne** for our next projects



Great Lots Are Available Now!

- YWFE550SOLZ** Whirlpool Electric Range
- WRF535SWHZ** Whirlpool French Door Refrigerator
- WDTA50SAKZ** Whirlpool Dishwasher
- WVW73UC0LS** Whirlpool Range Hood
- WTW4855HW** Whirlpool Top-Load Washer (white finish)
- YWED4850HW** Whirlpool Top-Load Electric Dryer (white finish)

In partnership with

LONDON MAJOR APPLIANCES

SERVICE LIMITED (Est. 1959)

"Appliance Specialists"

Ask about natural gas options!

*Applies to homes sold with signed contract. Offer ends December 31, 2022

Contact us to arrange a sales consultation!
519-633-0691 • sales@donwest.ca



STORY
LISA KOOISTRA

PHOTO: BLYNDA DACOSTA

3 REASONS Designers Love SCANDINAVIAN STYLE

If you've seen my work, then it should come as no surprise that I'm a big fan of Scandinavian décor. This distinctive aesthetic is also popular among many of my clients, who are seeking a home that is defined by simplicity, warmth and comfort, with contemporary flair. These happen to be the very qualities that encapsulate what has been affectionately dubbed "Scandi style" and from an end-user perspective, are what home goals are made of. From a more technical designer's perspective, here are three reasons this unique aesthetic has been at the forefront of interior design since the 50s, and it isn't likely to fade anytime soon.



PHOTO: BLYNDA DACOSTA

IT WORKS

Function is one of the fundamental values and guiding principles of Scandinavian design. This approach gives precedence to the practical over the ornamental. Looks are important when it comes to design but the utilitarian mindset behind this decorating style focuses on efficiency, maximizing space, the user's energy and the materials used in construction. Aesthetically, Scandinavian-inspired design embraces clean lines, subtle curves and tapered legs, with a "less is more" mindset.

Another important aspect of this look isn't about what's in the space, but rather what isn't there. I'm referring to clutter. Regardless of your home's style, the dreaded "C" word creeps up and captures our home, and with it, our sense of space and sanity. Decluttering is even more critical in Scandinavian spaces to enhance a home's function and simplicity.

Continued on page 26

FloorSource

carpet, hardwood, vinyl, laminate & tile

4333
Col. Talbot Rd. London
www.floorsource.ca
519.652.0140

your flooring source for every room in your home

DESIGN+
FULL INTERIOR & EXTERIOR - 3D RENDERINGS, SPACE PLANNING

FURNISH

QUANTUM
VERDI
RDI

487 RICHMOND STREET • LONDON, ON • N6A 3E4
www.quantumverdi.com

27-29 JAN. 2023

LIFESTYLE HOMESHOW

lifestylehomeshow.ca
@lifestylehomeshow @ f

Western Fair District Agriplex
London, Ontario



IT HAS STAYING POWER

The neutral palette that defines Scandinavian style gives it a much longer shelf life than perhaps the bolder, more “trendy” styles that come – and go – and quickly show their age. This makes it a winning choice for many clients, who don’t want to endure the inconvenience of yet another redesign in a few years, or suffer the cost.

This minimal colour palette commonly includes variations of white, off-white, ivory, beige, taupe and grey, and visual depth is achieved through the layering of multi-tonal neutrals, some subtle (and specific) patterns, and a variety of different textures. Black details bring balance to this neutral backdrop, add emphasis and draw attention as key focal points in the space, such as black-and-white prints or black-framed artwork, black accessories or accent furniture.

Materials also tend toward the neutral and organic, with a big focus on wood everywhere from flooring and furniture to accessories.



IT FEELS LIKE HOME

The role of a designer is to make a house (or a condo) feel like a home. A home is intrinsically warm, cosy and comfortable, inviting you to come in, sit down and put your feet up. When a client feels all this in their newly designed home, a designer’s work is done. I love Scandinavian décor because it does exactly that.

The Scandinavian concept of “hygge” is about comfort as a state of mind. So, how does a feeling or a thought materialize in a physical and sensory way? Enter texture. Think oversized cushions, cotton chenille and alpaca wool throws, knotted area rugs and fluffy sheepskin. Now, layer these over hardwood, wicker, leather and linen. If you picked up on a theme, very good! Scandi style leans heavily on organic materials and motifs that instantly warm the heart and body.

Scandinavian style has it all – high function, simplicity and beauty, all priorities in today’s hectic world. A home should be a place to escape and feel embraced by the people, things and emotions that bring you comfort. If you’re in search of a new aesthetic for 2023 or are craving some cosy, give Scandinavian a go.

Lisa Kooistra is the creative director and principal designer for Lisa Kooistra Design.



LivingLIGHTING
London North

1673 RICHMOND ST. N., LONDON
 ☎ 519-667-3022
 ✉ londonnorth@livinglighting.com
 🌐 livinglightinglondonnorth.xolights.com

OPEN
7 DAYS
A WEEK

STORY **MEGAN SMITH-HARRIS**
PHOTOGRAPHY **COURTESY OF DREAM LOTTERY**

A DREAM *come true*

THE LONDON LOTTERY DREAM HOME WOWS

Open, airy and sophisticated – who wouldn't want to live in the 2023 London Dream Lottery Home in Talbotville built by Woodfield – Design + Build with interior design by Red Acorn Studio and valued at \$1,790,000.



Continued on page 30



WHO HASN'T fantasized about winning a stylish, state-of-the-art, fully furnished Dream Home? Now there's a very real opportunity to win one. The current London Lottery Dream Home is an impressive 3,254 sq. ft. modern farmhouse on a generous corner lot with four bedrooms, four-and-a-half baths, a chef's kitchen, high ceilings and distinctive architectural details. Ticket-buyers not only have a shot at winning this stunning property, they also get to help out the community, as all proceeds directly benefit area hospitals.

Designed and built by Londoners (and brothers-in-law) **Phil Alves** and **Rick Leitao** of **Woodfield Design + Build** with interiors by **Lea Legg** of **Red Acorn Studio**, this Talbotville house possesses both style and substance. The handsome white brick exterior is neatly tailored with black, European tilt-and-turn custom windows by **Raven Windows** with high performance thermal and acoustic characteristics. Peaked symmetrical rooflines (**Kettle Creek Roofing**) and a striking two-storey stone chimney stack (**Woodburn Masonry**) provide dimension and visual impact.

Inside, it just gets better. The foyer, grand staircase and open-concept living/dining/kitchen areas are bathed in abundant natural light from the towering windows – many rising to the second floor. Blonde, wide-plank oak flooring (**Flatout Flooring**) flows throughout the house, adding a warm, unifying Scandinavian vibe. Custom, black, steel railings, specially constructed, painted and installed on site, adorn the staircase, and run from the basement to the second floor.

Furniture and accessories have a modern, yet relaxed feel. The living room features two inviting white sofas, black-lacquer cane chairs, a low-slung blonde oak coffee table and a sleek gas fireplace with a porcelain surround. The adjacent dining area features a large pine Parsons table with black chairs and views to the outdoors.

The kitchen is defined by a gorgeous, cultured floor-to-ceiling stone feature wall (**Ferrel Brick London**, install **Woodburn Masonry**). Classic beige Shaker-style cabinetry (**Buehler Custom Woodworking**) provides enviable storage and is complemented by black porcelain countertops from **Sloan Stone Design**. A professional eight-burner Fisher & Paykel gas range (**Goemans Appliances**) with a custom range hood will inspire any cook. Elongated vintage birch french doors artfully conceal the butler's pantry and provide rustic charm. *Continued on page 32*



The Dream Home has an impressive exterior and sits on a large lot. Lobo Landscaping created the landscape design and J.D. Interlock installed the hardscaping using Triple H Highthorn materials.



The lucky Dream Home winner can work in style in this chic office space with floor-to-ceiling windows flanked by custom linen-blend curtains, a modular desk and retro 70s-style club chairs. The space has a unique groin-vaulted ceiling, which adds distinctive architectural flair.



TOP: It's all about connection – the relaxed living area flows effortlessly into the dining space and on to the spectacular kitchen artfully anchored by an eye-catching natural-stone feature wall. **ABOVE LEFT:** A monochromatic two-piece powder room; sink, toilet and faucet from Premium Plumbing and Heating Inc., counters by Sloan Stone Design. **ABOVE RIGHT:** The light-filled foyer and staircase harmonize perfectly and immediately establish the sophisticated black, white and blonde colour palette.

feature

The beige kitchen cabinetry is echoed in the combined laundry and mudroom and provides ample storage. A set of double-stacked LG washers and dryers promises to make laundry day a breeze.

Upstairs, the spacious primary bedroom is all about elegant simplicity. The space is anchored by a woven textured rug from Crate & Barrel, a king-size bed dressed with flax-coloured linens, and a framed modern print (**Wills & Prior**). A statement black light fixture and gun-metal grey linen-blend drapery (**Blinds by Design**) add another layer of sophistication.

The luxurious en suite features double sinks, a vessel bathtub and a dramatic, fully-arched entry into a curbless shower with double shower heads and white subway tile. An adjacent walk-in closet offers an attractive and efficient closet storage system. Three additional bedrooms boast en suites and walk-in closets as well, ensuring family harmony.

Arches are a recurrent theme throughout the house, and appear in window casings,



ABOVE RIGHT: Belly up to the generous, oversize island with of-the-moment black porcelain counters that provide contrast with the classic white farmhouse sink. **ABOVE:** Striking french doors dress up the entryway to the spacious butler's pantry, which features a second sink and dishwasher, along with additional storage.



A high-end, eight-burner gas range with a convenient pot-filler is crowned with a statement custom range hood designed by Lea Legg and built by Buehler Custom Woodworking



doorways, mirrors and a groin-vaulted ceiling in the office. The house is also a smart home, decked out with voice-activated lights and a security system, as well as three-zone HVAC and four-zone speakers.

Woodfield got involved with the project because they saw the Dream Home as a great opportunity to help local hospitals. Phil,

a trained architectural technologist, has a passion for architecture and design, whereas Rick's background is in marketing and promotion. "Our skill set complements each other, so together, we make one really good person," jokes Rick.

Phil had a vision for the dream home and their team was given full creative licence.

"That speaks to how much the lottery team trusts us and respects Phil's work," says Rick. From start to finish, the project only took eight months to complete.

"We have a streamlined process, an incredible team and our trades are loyal to us, says Phil. "When people know it's a dream home they want to participate even more."

Continued on page 34



TOP: A substantial Parsons table with an upscale butcher block vibe defines the dining area and is balanced by black wooden chairs with an updated Shaker style. **ABOVE:** A multipurpose laundry/mudroom doesn't disappoint, providing double washers and dryers, a utility sink, tons of storage and a convenient bench to put on and take off boots.

feature

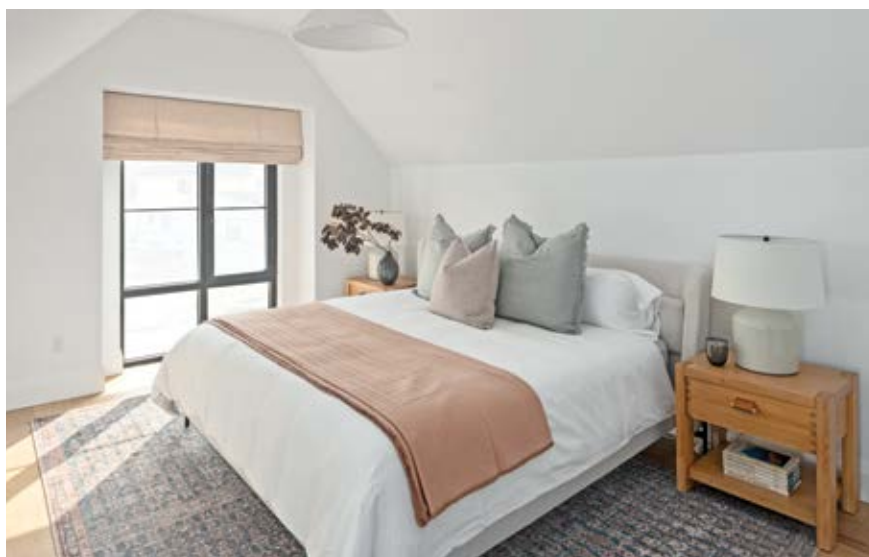


LEFT: Soft light fills this pretty guest room painted Benjamin Moore Horizon Gray and simply decorated with blush bed linens and modern artwork by Wills & Prior. **CENTRE LEFT & CENTRE RIGHT:** Each bedroom is outfitted with an en suite bath with vanities by Buehler Custom Cabinetry and floor and wall tile work by Refined Flooring & Design. **BOTTOM LEFT:** The home's four bedrooms each have their own personality – this romantic dormered space is styled in muted greys and pinks. **BOTTOM RIGHT:** A black iron bedstead has tailored grey-and-black striped linen bedding.



Lea has been working on Dream Home projects for the past six years and immediately connected with the Woodfield team. "In my opinion, Lea is the most talented designer around," says Rick. "We put our full trust in her," adds Phil. "There were elements she suggested that initially we weren't sure of, but when we saw everything pulled together, they not only worked, they were awesome."

Continued on page 36



20 Years in Business
★★★★★
Check Out Our 5-Star Google Reviews

Custom Draperies done by Blinds by Design for the London Dream Lottery

Motorization Experts

AWARDED #1 CUSTOMERS' CHOICE
Blinds, Draperies, Shades, Shutters & Great Ideas!

Blinds by design

151 Pine Valley Blvd, Unit 6, London • 519-681-9992
101 Fanshawe Park Rd E, London • 519-601-8992
86 Frank St, Strathroy • 519-601-8992
www.blindsbydesign.ca • nicki@blindsbydesign.ca

Visit our showroom today!

Sloan Stone DESIGN
QUARTZ & GRANITE

...where exceeding customer satisfaction is our goal!

75 Midpark Cres., London, ON
519-652-3100
sales@sloanstonedesign.com
sloanstonedesign.com

Quartz & Granite Countertops
Kitchens | Vanities | Fireplace Surrounds & More!

feature



Every purchase of a Dream Lottery ticket helps change the lives of patients from across Southwestern Ontario who need the specialized services at Children's Hospital at LHSC, St. Joseph's Health Care London and London Health Sciences Centre. Proceeds also help London's hospitals invest in patient care, equipment, research and education. Dream Lottery has raised over \$53 million (net) for these regional hospitals since 1996.

Phil sums up their experience: "For us, it was a dream come true." Soon another dream will come true for one lucky winner. Will it be you? dreamitwinit.ca OH



TOP: A spa-like bathroom with an elegant double walk-in shower and a bathtub meant for lingering. Arched black framed mirrors echo the arch of the shower and tie in with the black countertops and window frames, adding to the sophisticated, modern feel. **ABOVE RIGHT:** The primary bedroom is sparsely furnished, creating a tranquil retreat. A decorative wall ladder, adorned with a luxurious blanket, adds a rustic touch and provides a homey counterpoint to the ultra-modern black light fixture, retro bedside tables and square white lamps.

LOCAL SOURCE GUIDE

- Arcon Electric Ltd. • Blinds By Design • Buehler Custom Woodworking • Ferrel Brick London • Flatout Flooring • Goemans Appliances • Heritage Stairs & Railing • JD Interlocking • Johnson Finishing Carpentry • Kettle Creek Roofing • LD Shoppe • Living Lighting • Lobo Landscape Ltd. • North Pole Trim & Supplies Ltd. • Premium Plumbing & Heating Inc. • Raven Windows • Red Acorn Studio • Refined Flooring & Design • Sloan Stone Design • Wido Tech Inc. • Wills & Prior • Woodburn Masonry • Woodfield Design + Build • Xtreme Metal Worx

1.800.265.2290



VISIT ONE OF OUR SHOWROOMS AT:
 888 GUELPH ST., KITCHENER, ON | 519.579.3810
 309 EXETER RD., LONDON, ON | 519.652.1677
 1112 MARCH RD., KANATA, ON | 613.592.9111



ENJOY THE VIEW

QUALITY & PRIDE BUILT INTO EVERY WINDOW



CELEBRATING 60 YEARS!

Thank you for your continued support!



AFFORDABLE LUXURY



Riobel



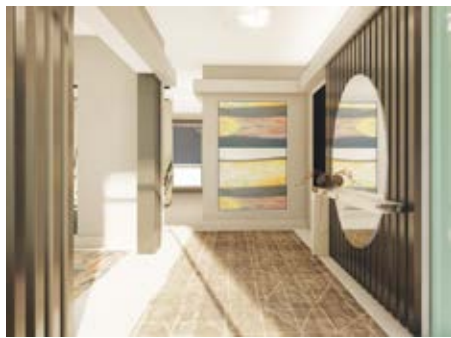
2 - 1350 Fanshawe Park Rd. W. London, ON N6G 5B1
 (519) 641-7555 Office / (519) 641-7551 Fax
www.aqualuxelondon.com



PHOTO: QUANTUM VERDI

Adam Mackowiak

ONE STOP *design*



ABOUT

Quantum Verdi is one of London's leading contemporary home-lifestyle stores, offering exceptional interior, exterior and architectural-concept design services. Established in 1989, this full-service design company is the brainchild of owner and creative force, Adam Mackowiak. The Richmond St. showroom features stunning home furnishings and décor accents that inspire endless possibilities. "It's never about us, it's always about the client," says Adam. "You need to listen carefully to truly understand what a client wants. We don't impose our style, rather we interpret their style so we can effectively guide them to the realization of their vision. When a house speaks to us, we call it a home."

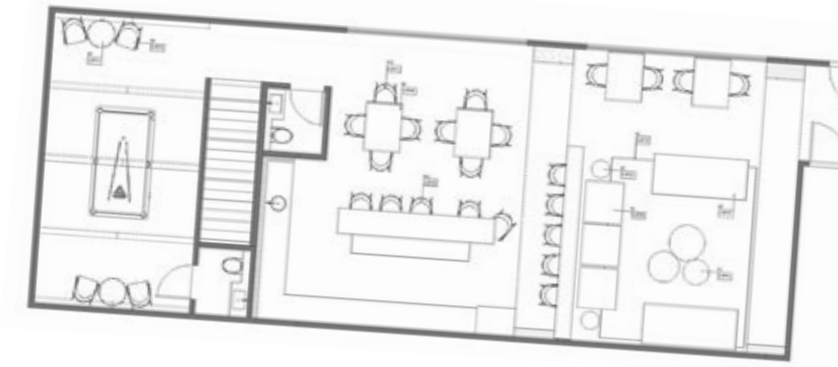


TRENDING

"Right now, people are intrigued by kitchens, home theatres and wine cellars," says Adam. "This is a core area of expertise for us and we are ready to transform your space."

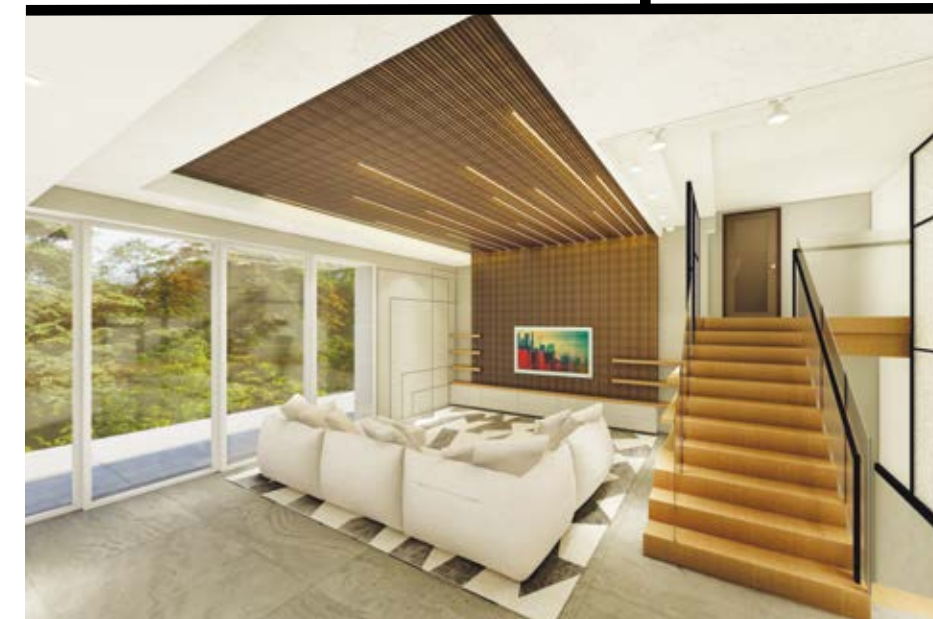
FULL SERVICE, PLEASE

When Quantum Verdi promises full service, they deliver. Whether you're looking for something as straightforward as a living room sectional sofa or as complex as a full-home design, build and furnish, they do it all. Their unique international team can assist with space planning, layouts, 3D rendering, CAD drawings and general consulting. The studio is committed to creating a space customized to your personality and lifestyle. Quantum Verdi's business concentrates on both commercial projects (focusing on designing sophisticated lobbies, party rooms and state-of-the-art fitness clubs for condo developments and high-rises) and residential (special designs and renovations). They have extensive relationships with industry-leading contractors, cabinet makers, finishing artists, metal fabricators and fine-furniture makers.



EUROPEAN CONNECTION

Though Adam has been in Canada for decades, he originally hails from Poland and has a strong connection to European design. This aesthetic is reflected in the offerings at Quantum Verdi, where they carry furniture lines from Sweden, Germany and Canada. Why? "Because the quality is superior, the design is first-rate and the prices are exceptional," says Adam. "We want to pass those benefits on to our clients." **OH**



Get there

487 Richmond St., London
519.438.5944 | quantumverdi.com

double take

HIBERNATE *in style*

RECREATE THIS LOOK
IN YOUR OWN HOME.



PHOTO: JASON HARTOG | DESIGNER: BRITTANY ZAZULA



- 1. POKOLOKO: Sophia Lambswool Throw Blanket in London
- 2. ELK HOME: Livingston 17" Wide 5-Light Chandelier
- 3. INDABA: Ambu Woven Pillow, Lina Linen Pillow (Stripe) and Nantucket Woven Pillow
- 4. ELK HOME: Dash Accent Table
- 5. ELK HOME: King Cake 22" High 1-Light Table Lamp
- 6. CRATE & BARREL: Tate Walnut Wood Bed
- 7. BRUNELLI: Organic White Cotton Duvet Cover
- 8. STYLE IN FORM: Everest Chair - Cream Boucle
- 9. STYLE IN FORM: Bohemian Bombay Pouf
- 10. MERCANA: Calvert Rug **OH**

Your Drapery and Shade PROFESSIONALS

ALTA
WINDOW FASHIONS
from shadeomatic

Covers
Special Offer
BUY ANY 5+ SHADES
& SAVE AN EXTRA 15%*
*Any manual or motorized shades,
excludes shutters

Request a Consultation — In your Home*, our Showroom or Virtual
*some conditions apply
SHOWROOM HOURS: Mon-Fri 10-5. Appointment Preferred. Closed Weekends.
www.coverscanada.ca




Willi Van Deven
Principal Design Consultant
London South



Shelley James
Decorating Consultant
London South



Lisa Leslie
Decorating Consultant
London North



BLISS™ AUTOMATION
SHADE AUTOMATION PROS

Ask To See Our Latest Drapery Fabric Collections

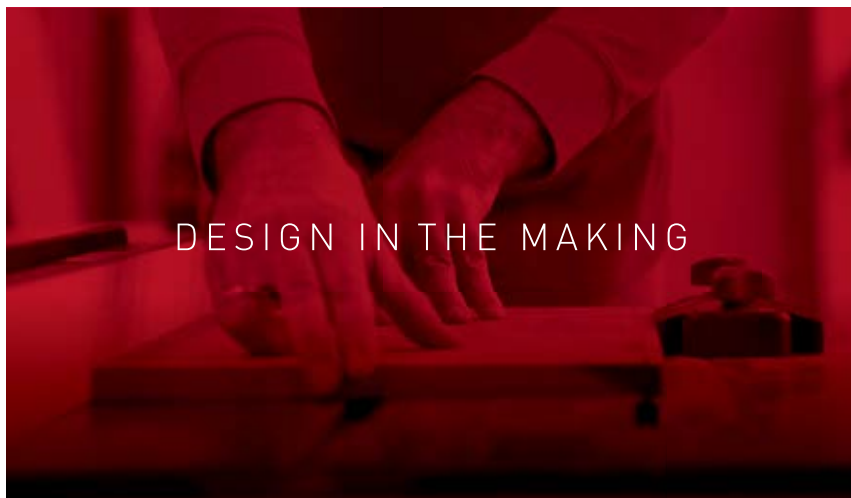
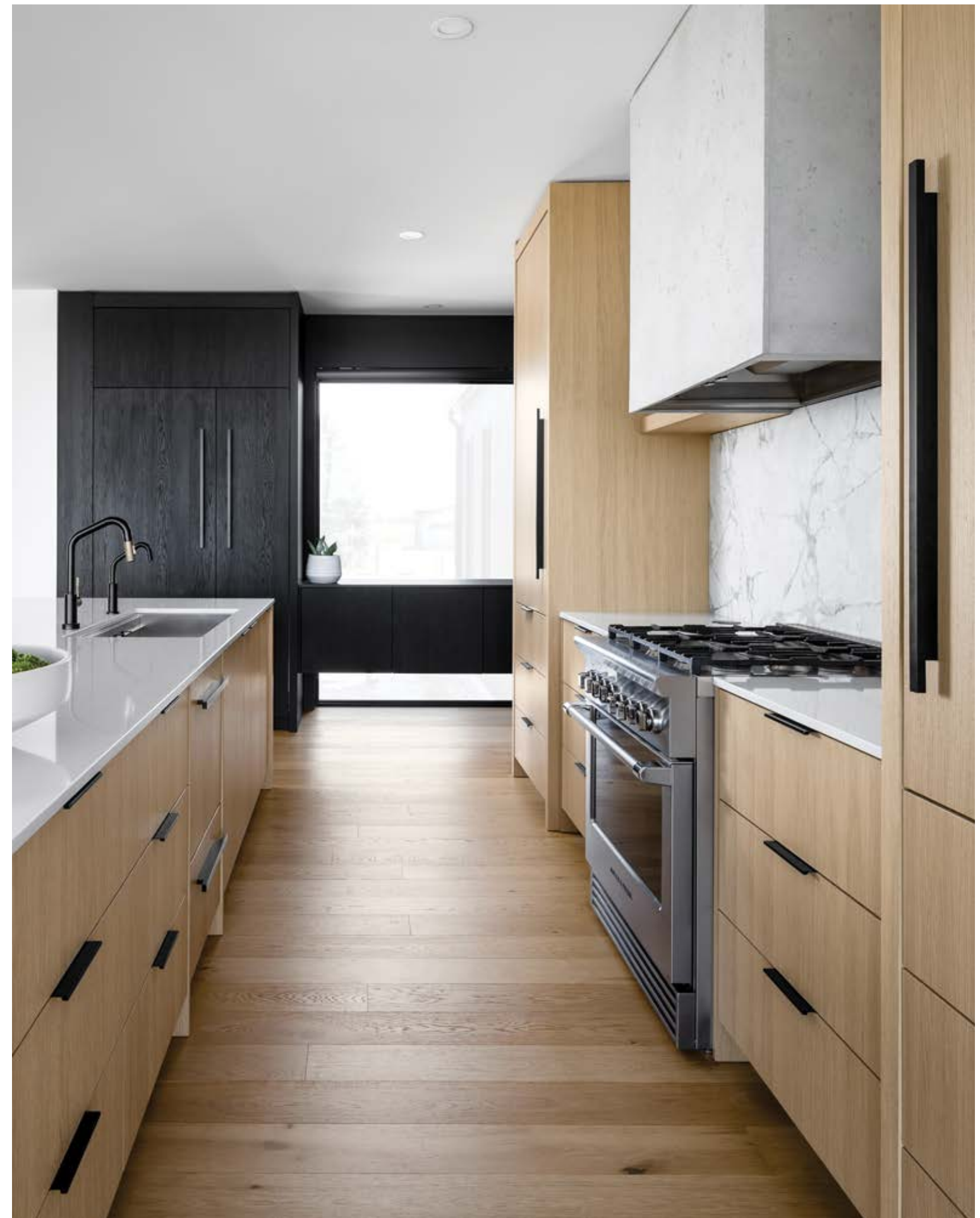
London North - 1950 Hyde Park Rd., London, ON N6H 5L9 • 519-660-3661
London South - Designers' Edge Showroom - 297 Exeter Rd., London N6L 1G3 • 519-652-0222

Serving London, St. Thomas, Strathroy, Lucan, Grand Bend and surrounding areas

the wood studio

CUSTOM CABINETRY | SPACE PLANNING & DESIGN | FINE FURNITURE

30 PACIFIC COURT | UNITS 5/6 | LONDON



GET IN TOUCH WITH US

519.872.1350

custom@thewoodstudio.ca

FIND US ONLINE

thewoodstudio.ca

[@thewoodstudiolondon](https://www.instagram.com/thewoodstudiolondon)

Photography: Barry MacKenzie

Home Builder: Details Renovation & Design

Easy and affordable ways to ACCENT WITH BLACK

STORY AMANDA SHIELDS
PHOTOGRAPHY KEILY RAMOS



Black is definitely having a moment right now. There are a zillion different ways to insert black into your décor. Personally, I like using black as a stylish accent colour rather than an all-over application and since I almost always use white as my backdrop, it acts as a nice contrast and really anchors your overall design. A long time ago I learned the classic 60-30-10 rule for decorating, which says that 60 per cent of the room should be your dominant colour, 30 per cent should be your secondary colour and the last 10 per cent should be your accent colour. Now I'm not one to follow all the rules, but I do believe if black is your accent colour, it should be kept somewhere under 20 per cent, otherwise it's going to come on too strong and you won't consider it an accent. I've seen some very cool all-black rooms, complete with black ceiling and black trim, but that's for another post.



Here are my favourite ways to use black as an accent:

SWITCH UP YOUR CABINET HARDWARE AND/OR PLUMBING FIXTURES

This is a great way to incorporate a little bit of black into any room without going overboard. Changing out your hardware is an easy and affordable way to make a quick update. Don't be afraid to mix your metals. Just try to limit your metal finishes to no more than two per room.

TIP: Matte black looks great with brushed gold.

PAINT YOUR INTERIOR DOORS

I absolutely love this idea because literally anybody can do it regardless of budget and it makes such an incredible statement. Black hides a lot of dirty, grimy little fingerprints. So, buy a can of black paint and get to it my friends. There are plenty of great tutorials online to help with your technique and choosing the right tools. A designer favourite is Tricorn Black by Sherwin Williams and I'd go with a satin finish.



PAINT AN ACCENT WALL

I get that black is not the first colour that comes to mind for many when they are choosing paint colour for their home, but I would love you to reconsider. Just as white is a designer favourite, and literally goes with anything, I'd like you to consider black as the new neutral and try it out on an accent wall. It's moody, dramatic, cosy and can anchor a room in the best way possible. It works best if the rest of the room is white and you keep your furniture on the lighter side, too. **OH**



GO DARK WITH ART

You want to choose artwork that is heavy on the black. Simple right? There are lots of options out there ranging in price from high to low. Make a serious impact with something high contrast or go moody with an all-dark palette. Either way, tie it back to one or two of the other options on this list and your décor is going to look so pulled together people will think you hired a designer.



CHANGE UP LIGHT FIXTURES

I especially like this option in the kitchen, but changing out light fixtures anywhere in the home is a great way to add some black. An all-white kitchen with black pendant lights is a rising trend. Even though there's no sign of black anywhere else in the design, it just seems to work very well. That little hit of contrast gives a much more polished look by staying away from the dreaded "matchy-matchy."



Amanda Shields is the creative director and principal designer for Amanda Shields Interiors.

holiday hints

Georgette
Le Creuset Braiser
in Blueberry



Robynne
Marimba
Chandelier
from Mercana



Lisa
Hello Fresh
Subscription



Sheila
Indaba's
Felt-star Pom
Pom Garland



CHRISTMAS Wishlist

We asked the staff at OUR HOMES what they'd like to find under the tree for their homes this Christmas.

Kelly
Ninja
Air Fryer



Lynn
Breville
Wafflemaker



Tara
KitchenAid's
Blossom
Stand Mixer



Tyler
ActiveDough
+ Bamboo
Charcoal Pillow
from Malouf



Janet
The Bay's Iconic
Oxford White
Point Blanket



Megan
Aludra Table
Lamp by Sunpan

Rachael
Billie Collection
Ink Salmon Rug
from Loloi



LONDON FINE FURNITURE
FINE PRICE

DESIGNER FRIENDLY & CUSTOMIZABLE

100% Canadian Made
Discover the Difference!

1040 Wharnclyffe Rd. S. • (519) 649-2590 • www.londonfinefurniture.com



Welcome home, to your Fountain West townhome!

REGISTER ONLINE
WWW.LEGACYHOMESOFLONDON.COM



good taste

Fig and Thyme GIN AND TONIC

RECIPE AND PHOTOGRAPHY
JENELLE MCCULLOCH

The figs give this gin and tonic a sweet honey-like quality and beautiful purple hue. Enjoy at your next holiday party!



FIG AND THYME SYRUP

- 1 cup granulated sugar
- 1 cup water
- 4-5 fresh figs
- A few sprigs of thyme

In a saucepan, combine sugar, water and figs. Heat gently for 5-10 minutes, stirring until the sugar dissolves and the figs begin to soften and break down. Remove from the heat and add the thyme. Allow to infuse for 30 minutes. Strain into a clean jar. You can keep any of the unused fig syrup for 3-4 weeks in the fridge.

PER COCKTAIL

- 2 oz. gin
- 1 oz. fig syrup
- ½ oz. fresh lemon juice
- Tonic water to top it off

To make your cocktail, fill a glass with ice and add gin, fig syrup and lemon juice. Top with a neutral tonic. Stir well, then garnish with a sprig of fresh thyme and enjoy! **OH**



Treat yourself to the Ultimate Gift

932 LEATHORNE STREET - LONDON, ON

519-685-2284



online Get more recipes at ourhomes.ca/blogrecipes



STORY MEGAN SMITH-HARRIS | PHOTOGRAPHY JASON HARTOG

home

*** FOR THE HOLIDAYS

When you enter the Ilderton home of Lisa Barron and Guy Van Gelder, you're enveloped by old-world charm and feel as if you've been transported to Europe. This gracious home is reminiscent of France, Belgium and the Netherlands all rolled into one.

Lisa's flair as an interior decorator combined with the couple's European sensibilities are reflected in this elegant home. Rooms are pleasingly populated with French country furniture, Flemish antiques, vintage copper pots and an abundance of natural linen. Many of these treasures come from **Oak and Linen Home**, an Arva-based home décor boutique owned by Lisa.

The story of how Lisa, Guy (now retired), and their teenage son, Mitch, came to live in this particular house sounds like a sitcom with a dash of John Cheever thrown in for good measure. Ten years ago, the family decided to relocate from Belgium to London, Ontario to be closer to Lisa's mother. Lisa had researched the real estate market and generated a list of 60 possible houses. "She knew more about them than the realtor," says Guy.

Continued on page 53



ABOVE: A Mid-century tripod floor lamp, eclectic wrought-iron candelabra and a framed antique sampler provide visual interest in the front hall. **LEFT:** A rustic wooden beam is reimagined as an outdoor table and perfect for perching these whimsical black lanterns. **OPPOSITE:** A cosy den flows off the pretty entryway and is casually outfitted with a linen sofa, lots of down-filled pillows and two striking 19th century daguerreotype portraits of Guy's great-great grandparents.



When everyone else was going for all-white kitchens, Lisa opted for greys and blacks to contrast with the speckled quartz counters and the warm tones of the cognac-coloured wood floors. **OPPOSITE, TOP:** The informal everyday dining area is defined by a double-sided stone fireplace that lends itself perfectly to holiday décor. **BOTTOM:** The formal dining room is the crown jewel of this charming home and used frequently by the homeowners, who love to entertain.



STANDING IN THE KITCHEN, IT'S EASY TO IMAGINE A HEARTY CASSOULET BUBBLING ON THE STOVE OR THE AROMA OF FRESHLY-BAKED BELGIAN WAFFLES WAFTING THROUGH THE HOUSE.

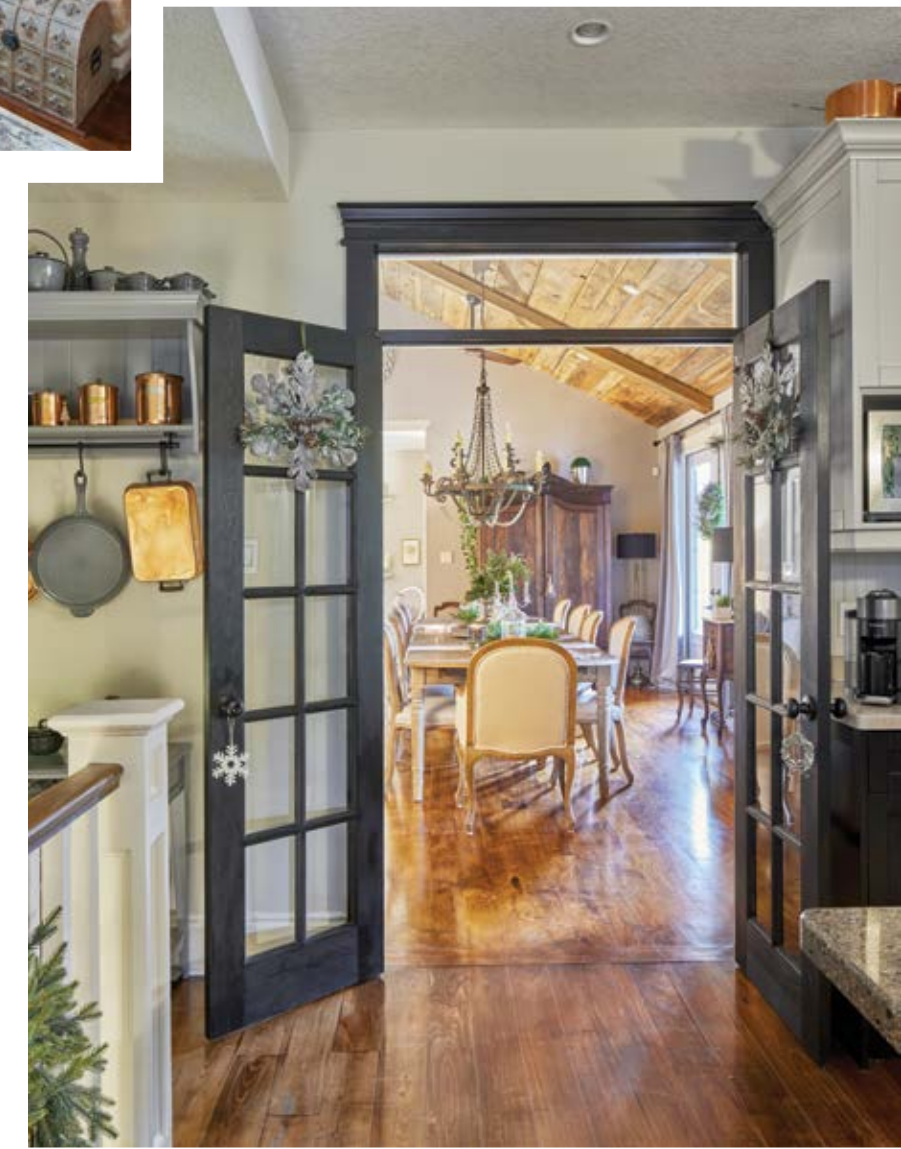
"We arrived in Toronto on a Saturday, rented a car and drove to London," recalls Lisa. "On Sunday we went to open houses and on Monday we looked at 10 homes. The tenth house was the one. We fell in love with it."

They packed up their life overseas and sent everything back to Canada in a massive shipping container. The family acclimated to their new life in Canada but after four years, began to reassess their needs. They yearned for a bigger yard with a pool but were reluctant to leave their great school district.

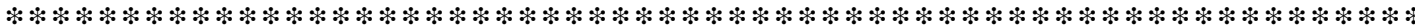
As luck would have it, a family that lived two doors down in a lovely house with a pool was also seeking change. In an unexpected twist, the two families bought each other's homes.

The "new" house that Lisa and Guy moved into was already renovated and didn't require any major changes. A basement granny suite was installed for Lisa's mother and the interior spaces were reimagined with a more European aesthetic.

The result is warm, inviting and quietly sophisticated. Behind every piece of furniture, artwork and object lies an interesting provenance or intriguing story. *Continued on page 54*



The eye travels far and wide and up and down in this endlessly captivating space. Lisa mixes one-of-a-kind antiques with flea market finds, giving them all equal billing. Substantial furniture pieces are softened with buffet lamps, silk tassels, greenery and a profusion of candles. Silk drapery panels add a luxurious element and contrast perfectly with the rough-hewn wood ceiling. **BOTTOM:** A holiday tableau featuring vintage porcelain Christmas trees, deer and a tall spray of white berry illex tree stems.



The previous owners had utilized a spacious high-ceilinged room off the kitchen as a family-friendly game space, outfitted with a pool table, sports memorabilia and a large flatscreen TV. Lisa and Guy's passion is entertaining, so they opted to transform the space into a show-stopping dining room.

An oversize iron chandelier softened with crystal and wood beads (Oak and Linen Home) hangs over a long French-country oak table surrounded by 10 dining chairs upholstered in a warm beige linen. At the far end of the room, an heirloom antique armoire has been retrofitted with shelves to hold glassware. At the opposite end, a smaller circa 1840s armoire has been repurposed as a display case for Lisa's pretty collection of creamware. A massive solid oak buffet (hand-

cerused by Lisa) holds linens, placemats, cutlery and china. "This space is elegant, pretty and sparkly," says Lisa. "All my favourite things are here."

Walls are painted a soothing greige (**Benjamin Moore** Thunder) and the towering back wall is given visual interest with a series of intricately carved wooden pieces from Indonesia and a sequence of panels with neutral, tone-on-tone English damask paisley wallpaper. A barnwood ceiling adds texture and character. Two sets of french doors flanked with taffeta-striped faux panels open to an outdoor entertaining area.

Gorgeous Mennonite maple floors with a cognac stain run throughout the house, unifying the space and adding warmth and charm. *Continued on page 56*

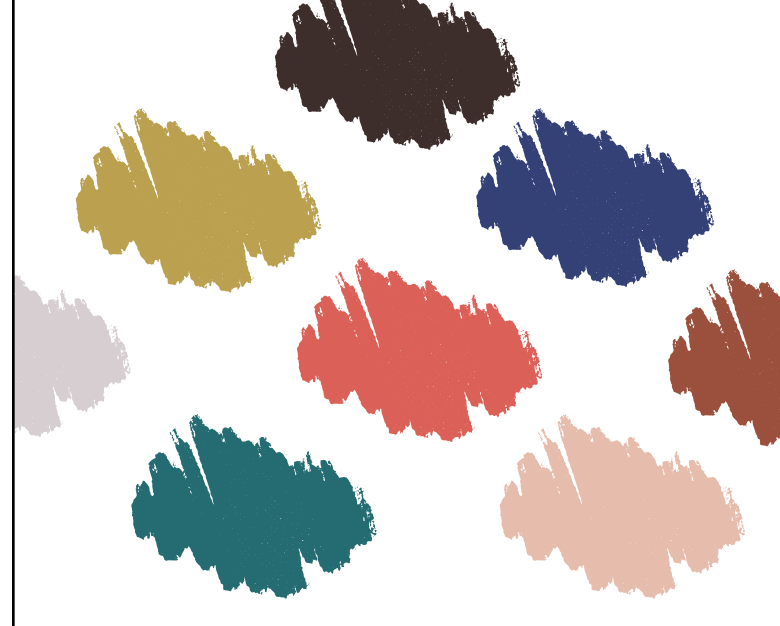


Boutique Firenze
FINE ITALIAN GLOVES & SCARVES
UNIQUE ARTISAN GIFTS

189 Adelaide St S in London
519-649-4122 | boutiquefirenze.ca

f i p

Design. Plan. Build. Furnish
184 York St. | 519-679-8526 | designhouselondon.ca



2023 COLOURS

test the trends

NOW AVAILABLE for just \$7.99

Benjamin Moore
COLOR SAMPLE

Clancy's Rainbow

595 Fanshawe Park Rd W (No Frills Plaza)

519.472.1116

1030 Adelaide St N (at Cheapside)

519.434.3201

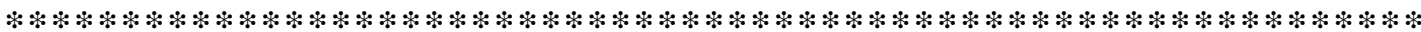
clancysrainbow.com

Benjamin Moore



A massive two-sided stone fireplace with a chunky hearth defines one of three backyard entertaining areas and helps extend opportunities for outdoor celebrations and get-togethers. Adjacent to this seating area (not pictured) is a simple outdoor bar and a dining area that can accommodate a crowd.

Continued on page 58



Oak and Linen Home

**YOUR SOURCE FOR
COUNTRY FRENCH DECOR**

*Home Accents & Linens | Homewares & Furniture
Decorating Services*

21556 RICHMOND STREET, ARVA
(519) 672-9514

WWW.OAKANDLINENHOME.COM
@OAKANDLINENHOME



Melody Gilmore
Sales Representative

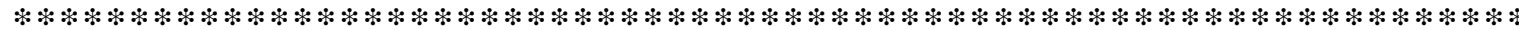
The REALTY FIRM INC.
Brokerage

Let a **professional** handle your most **valuable investment**

Call Melody today for a Free Market Evaluation

Direct 519.317.0940 // Office 519.601.1160
melody@melodygilmore.com // melodygilmore.com

Not intended to solicit properties already under contract for sale.



The homeowners installed french doors (**North Pole Trim & Supply Ltd.**) between the dining room and their homey kitchen and painted them a dramatic black. Cabinets are painted Benjamin Moore Revere Pewter, which contrast beautifully with the range hood, pantry door, island and window trim all painted Benjamin Moore Onyx. All paint from **Clancy's Rainbow**. The darker shades provide a perfect backdrop for a collection of vintage copper cookware. Standing in the kitchen, it's easy to imagine a hearty cassoulet bubbling on the stove or the aroma of freshly-baked Belgian waffles wafting through the house.

An adjacent casual dining space has an oak table, **Lloyd Loom** chairs and a glass-fronted teak cabinet to store everyday dishware. A double-sided fieldstone fireplace with a barn beam mantel is shared with the living room.

Living room décor is simple: a natural linen upholstered sofa and wing chair, tufted ottoman and Jaipur vintage-inspired rug (**Alexanian Carpet & Flooring**) share the space with a baby grand piano from **D&S Pianos**, played daily by Mitch, who aspires to be a music producer.

Across the hall is an intimate den with a versatile linen upholstered sofa, ottoman, 19th century family portraits and a TV, discreetly hidden inside an antique armoire. "In Belgium, one doesn't have a television in the living room, which is reserved for socializing," says Guy.

The winter holiday season is a happy coalescence of everything the Barron/Van Gelder clan values: family, friends, excellent food and even better conversation. Lisa and Guy have truly created a hospitable home not only for the holidays but for year-round living. **OH**

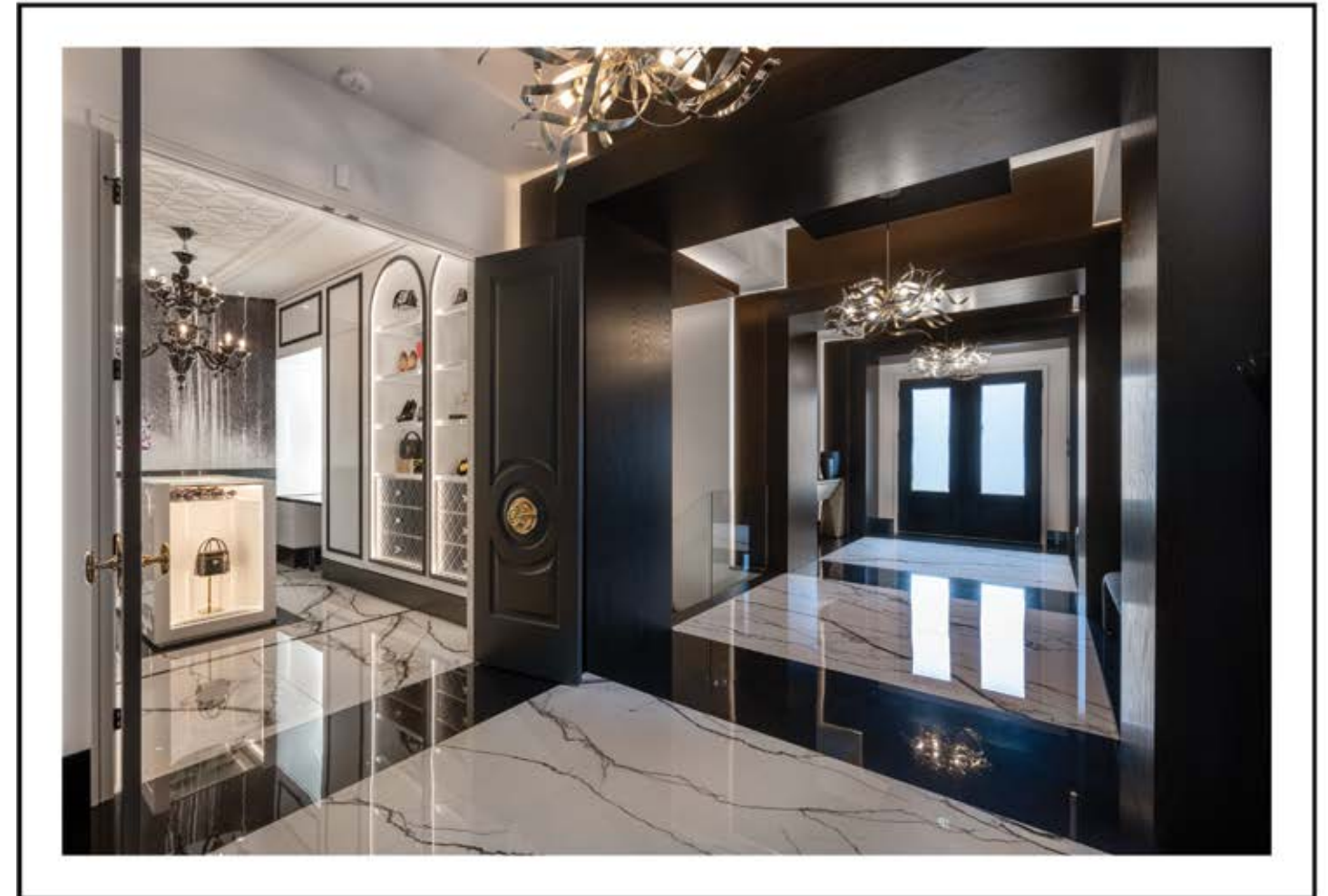
TOP LEFT: The living room is informal, unfussy and welcoming, allowing the sleek black baby grand piano to be the star attraction. **TOP RIGHT:** Homeowners Guy Van Gelder and Lisa Barron embrace the holiday season, making sure there's always a case of champagne on standby just in case unexpected guests drop by. **RIGHT:** Lisa's festive handiwork can be seen throughout – faux snow-kissed garlands, hurricane glasses filled with silver ornaments, large sparkly snowflakes hung from the mantel and a bowl of Christmas crackers awaiting their future.



MJCC

CUSTOM CABINETRY

ANYTHING BUT ORDINARY



WE IMPROVE THE APPEARANCE OF YOUR HOME

With a high level of craftsmanship and an eye for detail, MJCC sets the bar for beautifully crafted cabinetry.

Whether you are looking for a small vanity or a large project.

Helping your project reach its full potential is just one aspect of the excellence they strive for.

VISIT MARTINJESKO.COM | FOLLOW @MARTINJESKOCUSTOMCABINETRY

space designed by Erika Friesen and built by MJCC

'TIS THE SEASON TO BE *Brrrding*

STORY **LYNNE RICHARDSON**
PHOTOGRAPHY **NIGEL EVES**

STAY WARM AND KEEP ON BIRDING

Winter birdwatching? Yes, it's a thing. A really big thing. A season to look forward to with much anticipation. As winter descends, some may not feel any great urge to leave the warm sanctuaries of their homes and head out into the cold. But not birders. For them, the birding doesn't stop with the onset of winter weather. It simply brings another aspect to birding with a focus on the birds of winter.



Pine Grosbeak



Snowy Owl



Evening Grosbeak

CHRISTMAS BIRD COUNT

Way back in 1900, an honoured Christmas-week tradition was to hunt in competitions and see who could bag the most birds in one day. An American ornithologist at the time sought to break this convention by replacing it with a holiday Christmas Bird Census. This census would cover a day when people would count, rather than shoot, each and every bird found throughout the chosen date. The city of Toronto participated in this original census along with 25 other cities across North America. Impressive communication for an era without email, chatlines, Messenger and all the rest of today's media!

Today, Christmas Bird Counts are held between December 14 and January 5 across hundreds of communities in Ontario and throughout North America. They are organized by a naturalist club or a coordinator and involve teams of birders who head out to record every bird – species and numbers – in all parts of a designated 24 km diameter circle of land. Neither wind nor rain nor sleet nor

snow stops the count. It can be a blizzardy birding adventure!

Count day is generally wrapped up with a tally dinner where each team reveals the birds they have found, all hoping to have discovered the day's best bird – a lingering migrant, the winter specialties, or even a bird blown in from far off its normal range. Being winter, there are usually stories to share about mini-mishaps on snowy sideroads, slippery shorelines, in wild winds and weather and through all the other extremes winter may throw at you. And then there is usually one group that will confess to the always-embarrassing stopping for a Snowy Owl, only to zoom in on a white plastic bag caught up in a tree. The fun, the challenges and the rewards of a Christmas Bird Count can make a brave winter birder out of you! And there is the added bonus of knowing that the data collected from your heroic effort provides vital long-term information used to assess the health of winter bird populations, and helps guide conservation action.

PROJECT FEEDERWATCH

Ok, so I haven't convinced you to get out and freeze your fingers off focusing your binoculars in a blizzard, as fun as that may be? The thought of brrrding on the coldest days of the year still doesn't appeal? Well, never mind then; set aside the coldest days for watching your feeders from inside your cosy home. The worst days of winter can be the best days for feeder-watching. Feeders will be hopping with birds fuelling up before a winter storm or refuelling after one. Blizzards bring in birds looking for an easy, energy-saving snack.

Observing the action at your feeders will while away a cold winter's day. The energy, life and colour against a backdrop of snow that birds bring to your yard can't help but warm your spirit. And once again you can contribute critical information for environmental research by counting the birds you see for science. Simply enter your sightings in the Project FeederWatch database and contribute to the scientific body of knowledge on wintering bird species, distribution, and abundance. Birds are the barometers of the health of our environment so count every bird. Every bird matters.

So, when winter gets you down – get up and go birding! Beat those winter blues and awaken your senses with the cheery call of the Chickadee, the bright blue of a Blue Jay or the blushing red of a Cardinal. Merry winter brrrding! **OH**



Snow Buntings



Rough-legged Hawk

WINTER BIRD LIST

Winter is a time to find a range of birds that you won't see in the spring or summer. So, come December, birders start tackling their annual Winter Bird List. Over a period starting December 1 and running throughout the dead of winter to the end of February, we head out to find the winter specialties (Grosbeaks, Redpolls, Siskins, Snowy Owls, Rough-legged Hawks and more) along with our hardier year-round residents (Cardinals, Chickadees, Nuthatches, Woodpeckers and more) to round out our tallies. This fun and occasionally competitive activity motivates birders to grab their binoculars, scopes and scarves and head outdoors for a winter

treasure hunt of sorts. You never know what you may come across. The number and variety of birds are certainly lower in the winter, but the unique-to-winter species make up for that and add to the challenge.

Master lists are kept by ornithological organizations, and it is common to cumulatively rack up sightings of over 200 different species of birds across the province through these three bleak and seemingly barren months! No wonder many take up the challenge of winter bird listing. And as a bonus, winter listing is a good warm-up for one special, big day of birding – the annual Audubon Christmas Bird Count.



Blue Jay



Chickadee



DRIED ORANGE ORNAMENTS

PROJECT AND PHOTOGRAPHY ERIN ROCHON

THESE DRIED ORANGE ORNAMENTS ARE A COLOURFUL ADDITION TO YOUR TREE OR TABLE THIS HOLIDAY SEASON. THEY ALSO ADD A FESTIVE SCENT TO YOUR HOME.



MATERIALS

- 3 oranges
- Sharp knife
- Parchment paper
- Cookie sheet
- Hot glue gun
- String & needle
- Star anise
- Cinnamon sticks
- Rosemary sprigs
- Peppercorns
- Wooden beads (optional)
- String & needle

HOW-TO

Start by cutting the oranges into 1/4-inch thick slices. Preheat oven to 200°F. Place sliced oranges onto a cookie sheet lined with parchment paper. Make sure orange slices are equally spaced and not touching each other. Bake oranges for between two-and-a-half and five hours, until slices are translucent.

Next, remove oranges from oven and let cool for two hours.

Then, with a glue gun, start decorating the orange slices. Glue some star anise to the centre, add some pink peppercorns, a cinnamon stick and a sprig of rosemary to complete your ornament. Have fun, get creative and try different combinations!

Lastly, cut some string to hang your ornament. Use a needle to make a hole near the top of the orange and thread the string. Add a wooden bead or a cinnamon stick to the string to complete the look. Knot the ends of the string.

Add these dried orange ornaments to your tree, as a decorative touch to your table or add to a gift for that special someone. **OH**



Call Us When You're **HOT**... ...Call Us When You're **NOT**



**ENVIRONMENTALLY FRIENDLY
AIR CONDITIONERS & FURNACES**



**WATER
HEATER
RENTALS**
Starting at
\$22
Monthly

**Buy a furnace or air conditioner with no money down
for as low as \$37 A MONTH! O.A.C.**

- Full Line Dealer Since 1986
- Fully Equipped Service Vehicles
- 24 Hour No Heat Service
- No Interest or Payments for 3 Months O.A.C.

CARVER SHEET METAL
BUY A FURNACE & GET
\$300 OFF
CENTRAL AIR
EXPIRES MARCH 31, 2023



turn to the experts™



176 RECTORY STREET, LONDON
519-686-1545 • www.carversheetmetal.com



COLLABORATION



Work with local experts who set a standard of excellence for everything you need for your home.

PHOTOGRAPHY JACKIE NOBLE

THE REALTY FIRM INC., BROKERAGE

The Realty Firm Inc., Brokerage is founded on the core principle of excellence and we are driven by the needs and goals of our clients. In every aspect of our daily operations, the focus is on providing the optimal consumer experience. We empower our real estate partners to deliver exceptional results through first-rate training and support, ensuring exceptional outcomes.

"I'm energetic, focused and passionate about helping people achieve their real estate goals."

— Melody Gilmore



Kay Habib Home Stager
& Melody Gilmore Broker

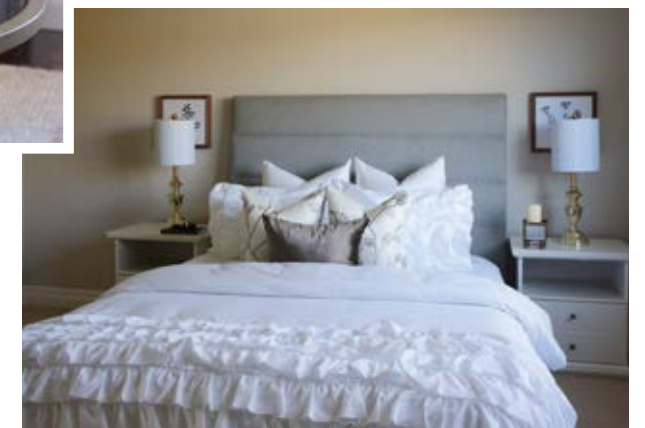


INDUSTRY TRENDS

In terms of current real estate trends, the market has definitely shifted. Prices are stabilizing and interest rates continue to inch up, but buyers and sellers need to remember that it's all relative. The market is still moving and people will always be motivated to buy and sell.

PARTNERSHIP

Buying or selling a home is one of the largest financial transactions most people will ever make. Real estate professional Melody Gilmore successfully walks you through every step of the process. She will help you sell your current property and/or buy the home of your dreams while working tirelessly to make your experience streamlined and enjoyable.



Continued on page 66

CUSTOM SHADES OF LONDON

Launching our new business in March 2020 has been an exciting opportunity to assist many new and established homeowners in the London area with Hunter Douglas window coverings and custom décor. Our experienced design team can help create a personalized look for any room in your home.

FABRIC, BEDDING AND DÉCOR

Designer fabrics, quality bedding and home décor from Canadian suppliers such as Cuddle Down, Daniadown and Brunelli will make your house a home. Area rugs from Dash & Albert and Surya will complete your look. Design services from initial vision through to professional installation – we can do it all.

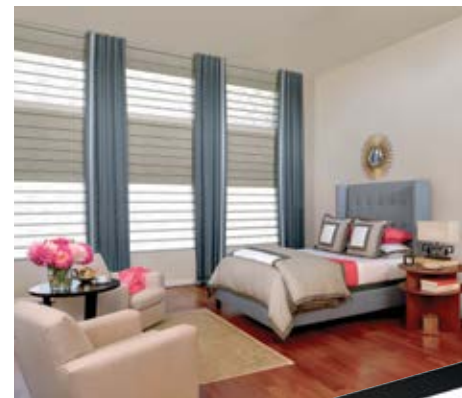


Janice Brock, Wes Petch, Patty Dowling & Sydney McLean



“With years of experience we provide exceptional, professional service from vision to installation.”

— Janice Brock



AUTOMATION

Once considered a luxury, automation in window coverings has become commonplace. Advances in technology allow operation through sleek remotes, your phone or tablet, and voice-integrated activation through many options, including Alexa, Siri, Google and many whole-home systems. Automation increases pet and child safety, home security and overall convenience.

DESIGN HOUSE LONDON

We are a full-service interior design firm focused on helping you from start to finish. Our three-person design team means we each bring something different to the table. Whether you're embarking upon a small-scale home renovation or full-blown commercial projects, we can do it all!



Andrea Bursey (front), Nathan Agustin & Tricia Tack

WORKING TOGETHER

At Design House London, we listen to our clients' needs and wants. Not everyone has the same fashion style or taste in music, and the same is true for interiors. We create designs based on each client's vision and dreams, not just on what is trending.

“We design, plan, build and furnish spaces people love to live in. Let's get to work, shall we?”

— Andrea Bursey



WARM & COSY

While modern farmhouse is still a hot trend that isn't going away anytime soon, we believe interior trends are going to shift to an even warmer, cosier vibe in 2023. Inviting jewel tones such as shades of burgundy and blush are on the horizon. Darker wood cabinetry for kitchens and washroom vanities is also trending. And remember those toasty tan shades of the early 2000s? They're making a comeback, too.

COVERS DESIGNERS EDGE

Covers Designers Edge is an established expert in all types of window coverings for homes, businesses and commercial settings. We take pride in our professional approach and best-in-class products with trained expert installers. With almost 40 years in business, we have a reputation for quality products and services.



*Kevin Fellner,
Shelley James &
Willi Van Deven*



"With a vast selection of top vendors, Covers Designers Edge offers shading solutions for every type of window, including child-safe cordless, motorized, bloc wand and more." — Kevin Fellner

BIG WINDOWS

Architects and builders continue to design homes, offices and high-rise buildings with massive windows. Many common types of window coverings aren't suitable for these large windows, and inferior quality products can't stand up to the weight of the larger shades required. We offer some of the best-designed systems to meet these challenges.



QUALITY PRODUCTS

The average consumer replaces window coverings infrequently so when they do select them, the number one consideration should always be quality. Properly selected window coverings offer light control, privacy, sun and UV protection, as well as insulation. Controls can range from a simple cordless lift style to complete automation. Because the choices are wide and varied, professional advice is a must. **OH**

SEE OUR DIRECTORY FOR ALL CONTACT INFORMATION.

EXPAND THE ONLINE PRESENCE OF YOUR BUSINESS

INQUIRE ABOUT OUR DIGITAL ADVERTISING OPPORTUNITIES



REACH 500,000+ PEOPLE ONLINE

• SOCIAL MEDIA POSTS • NEWSLETTER ADS • SPONSORED ARTICLES • AND MORE

ourhomes
CELEBRATING LIFE AT HOME

FOLLOW US ON   



We don't just build homes, we build relationships

Vranic Homes is a family-owned business that specializes in quality custom homes, with attention to detail and customer service that is unparalleled in our industry. Our homes are built on the foundation of integrity, customer service, and professional expertise. Each home is designed with our client's needs and lifestyle in mind, which is why we have repeated success with our client experiences.



www.vranichomes.com
519-521-4734
sales@vranichomes.com



To Rent or Buy?

THAT IS THE QUESTION

STORY **MEGAN SMITH-HARRIS** | ILLUSTRATION **SHEILA BRITTON**

In life and in real estate, timing is everything. With interest rates ratcheting up at an unnerving pace, is it better to rent and luxuriate in a turnkey, trouble-free existence? Or should one take advantage of plummeting real estate prices and jump into the housing market before mortgage rates soar even higher?

WHAT TO DO, WHAT TO DO? As a consumer, it's hard to know the right financial move in the current real estate climate, which is, at best, murky and at worst, highly volatile.

These are not idle musings. My American husband and I are in the thick of it. After 20 years living in the United States, we decided to move back to my Canadian homeland. I identified a charming, walkable community for us to live in, one with great restaurants and enviable cultural attractions, but by the time we relocated, house prices had soared an astonishing 40 per cent in a mere two years. Our dream of buying a storybook cottage imploded as pre-emptive bully bids and dog-eat-dog bidding wars became the norm.

So, we've been renting. Don't feel sorry for us – we're in a penthouse condo with amazing views, a private rooftop deck and heated underground parking. After decades of

homeownership, we're enjoying the freedom of not paying property taxes, shovelling the walkway or dealing with maintenance issues. But here's the rub: we miss being the rulers of our own domain. We want a real Christmas tree (only faux allowed here) and crave a big gas barbecue instead of the lame electric one mandated by the condo board. But most of all we want a fenced yard for our dog Duncan, who currently lives with our son because we're in a no-pets building.

I have bought and sold eight homes and done things the right way (made a tidy profit), and the soul-destroying way (sold two houses for less than I paid for them). Why do I keep buying real estate? Growing up, I was indoctrinated to believe that renting was "throwing money away" that could more advantageously be used to pay down a mortgage. That reasoning has merit, but on

the other hand, my husband and I don't want to be chumps and overpay for a house that won't hold its value. I consulted some local real estate professionals to get their take on the situation.

The market is correcting and that's a good thing according to Jodi Hannivan of Keller Williams Lifestyles Realty in London. "Now that prices and expectations are more balanced, buyers can ask for reasonable conditions such as financing and home inspections."

According to a recent study released by in-house economists at Desjardins Group, Ontario has moved from a "pandemic-fueled seller's market" to more "balanced territory." Housing prices are predicted to drop by up to 25 per cent by December 2023 from their all-time high in February 2022.

Is springtime still the ideal time to buy? According to Jodi, maybe not. "Seasonality doesn't really exist in the way it used to," she says. "We see great properties listed throughout the year." Her advice to homebuyers: "Keep up your search. There aren't as many buyers in the winter so you won't face as much competition."

June Leitch, a realtor at Home & Company Real Estate Brokerage in Stratford concurs. "We're still in a transitional market and prices continue to go down slightly on a weekly basis," June says. "After six years of a seller's market buyers now have an advantage because inventory is high and negotiations come into play with almost every deal."

And renting isn't always the cheaper option. Recent stats from rentals.ca indicate: "The average price for all property types across Canada in September was \$2,043 per month." This is an increase of 21.9 per cent from April 2021.

"In our community we have a shortage of rentals and rents are high so it comes down to supply and demand," explains June. "If someone can qualify for a mortgage, they should consider purchasing because their monthly payments will likely be less than their rent."

Will my husband and I finally be able to buy a Victorian charmer on a mature tree-lined street at an affordable price? That remains to be seen. In the meantime, we're enjoying the perks of being renters but looking forward to the day when we can play with our dog in our own backyard. **OH**

THE REALTY CONCIERGE

ACCESS TO
**PRE-CONSTRUCTION
AND INCENTIVES**

Setting you up for financial gains in 2025-2027 with little investment today

**GET ON OUR
DISTRIBUTION LIST NOW!**

Rahim Charania, BROKER
info@realtyconcierge.ca
www.realtyconcierge.ca
519-859-0133 • 647-243-6742

CHARANIA GROUP REALTY INC. | exp REALTY BROKERAGE | THE REALTY CONCIERGE

Advertise With Us

Give your business the benefit of premium exposure and connect, like never before, to our extensive targeted readership!

Lisa Ormsby Account Executive
T: 705.607.0411 E: lisa.ormsby@ourhomes.ca

Tyler Annette Account Executive
T: 705.888.5706 E: tyler.annette@ourhomes.ca

STEEL GRILL CATERING

519.455.8222
steelgrill.com

BEST OF LONDON 2022 WINNER

Photography by Abi Collins

Catering to London's finest venues & private parties...with personality.

CORPORATE « COCKTAIL RECEPTIONS » WEDDINGS

DALE + COMPANY

HOME DECOR

519-305-1133 | daleandcompany.ca

17 MARKET PL, STRATFORD



DETAILS
— CUSTOM —

**REDEFINING
CUSTOM HOME
BUILDING**



519 318 5448 • info@detailscustom.ca • detailscustom.ca

Bourbon Caramel CHEESECAKE

RECIPE AND PHOTOGRAPHY
JENELLE MCCULLOCH

WE TAKE A CLASSIC CHEESECAKE AND GIVE IT AN ADULT-RATED UPGRADE WITH OUR BOURBON CARAMEL SAUCE.

Tip: For a bold sauce with hints of bitterness, try cooking the caramel to a dark amber.

online Get more recipes at ourhomes.ca/blogrecipes



Ingredients

GRAHAM CRUST

- 1 ½ cups graham cracker crumbs
- 5 Tbsp unsalted butter, melted
- ¼ cup granulated sugar

CHEESECAKE FILLING

- 4 8-ounce blocks full-fat cream cheese, room temperature
- 1 cup granulated sugar
- 1 cup full-fat sour cream, room temperature
- 1 tsp vanilla extract
- 3 large eggs, room temperature

BOURBON CARAMEL SAUCE

- 1 cup granulated sugar
- ¼ cup water
- ½ cup heavy whipping cream, room temperature
- ¼ cup butter, room temperature
- 2 Tbsp bourbon
- 1 tsp vanilla extract
- 1 tsp fine sea salt

Instructions

CHEESECAKE

Preheat the oven to 350°F. Using a food processor, pulse graham crackers into crumbs. Combine with melted butter and sugar. Press mixture into a 9-inch springform pan. Prebake crust for 10 minutes. Once baked, remove from the oven.

To prepare the cheesecake filling, using your mixer, beat together cream cheese and sugar on medium speed until creamy, about 2 minutes. Add sour cream and vanilla until combined. Beat in eggs one at a time, stopping after the last egg is combined to prevent overbeating. Pour the cheesecake batter on top of the crust. Use a rubber spatula or spoon to smooth it into an even layer.

Place in oven and bake for 55-70 minutes, until the centre is set. When it's done, the centre of the cheesecake will wobble slightly if you gently shake the pan. Turn the oven off and open the oven door slightly. Let the cheesecake sit in the oven and cool down for 1 hour. Remove from oven and cool cheesecake completely uncovered at room temperature. Then cover and refrigerate the cheesecake for at least 4 hours or overnight.

BOURBON CARAMEL SAUCE

Combine sugar and water in a saucepan over medium-high heat. Stir once to combine and leave untouched until the sugar has caramelized. The sugar will slowly turn from gold to an amber colour. Cooking the caramel longer will enhance the bitterness and is up to personal preference. Once it reaches an amber colour, remove from heat and slowly whisk in the heavy cream. The mixture will bubble – be careful of the steam. Add in butter and whisk until combined. Add bourbon, vanilla and sea salt and whisk to combine. Set aside and let cool in the fridge until thickened.

TO SERVE

Remove cheesecake from the springform pan. Pour the caramel sauce over top and place back into the fridge to set or until ready to serve. OH



- London's #1 window and door company
- A+ rating from the Better Business Bureau
- Top-quality window and door brands
- 30 years of experience



London's Largest Showroom

COME BROWSE OUR COLLECTION OF WINDOWS AND DOORS OR REQUEST A QUOTE

Add a FESTIVE TOUCH



STORY PATTI WILSON

Your home becomes a hosting haven in the fall and winter months, when the chill sets in and people want a warm, cosy place to meet and greet. For some, their homes practically become an open venue for drop-ins and planned gatherings that stretch through the winter and into the new year. Here are some easy tips to keep your home “dressed for guests” on any given day.

MAKE WAY FOR THE HOLIDAYS!

The cardinal sin of decorating, for everyday or any occasion, is creating clutter in the process. I'm a big proponent of the “one in, one out” rule, whereby you remove one item for every new piece you intend to introduce into a room. This is especially relevant when adding seasonal décor to an already furnished and accessorized room. Whenever adding a set of new or themed décor or furnishings, your decorating strategy should include the removal of some of your year-round elements in favour of those festive fares. If you are decorating your fireplace mantel, be sure to remove the existing décor and start with a blank slate. This rule also applies to tabletop accessories, centrepieces, pillows and throws. Similarly, swap out the photos in your picture frames and replace pillows and throws with something appropriately themed in a richer fabric such as fleece and chunky wool knits. And what about the decorated tree? Unless you have lots of open space, you'll likely need to remove an armchair or a side table to accommodate this larger item.

Continued on page 76

PHOTOGRAPHY JAMES C LEE



We're Budget Blinds, and we're North America's #1 provider of custom window coverings. We do it all for you; design, measure and install – because we think everyone, at every budget, deserves style, service, and the peace-of-mind of the best warranty in the business.



Style and service for every budget.®

Call now for your FREE in-home consultation!

226.289.7881
BudgetBlinds.com/London-On

Blinds • Shutters • Shades • Drapes • Home Automation



TIP: Choose a theme and stick to it. There are many festive options: woody cottage, winter wonderland, silver and gold. Carry your chosen theme into others areas of the home, too, such as fresh or faux greenery wrapped around your banister and incorporated into unconventional areas, like in the kitchen and bathrooms.

SET THE MOOD

Lighting contributes to the vibe in your home, which impacts the people who live in your home and visitors. Layer lighting by combining ambient, task and accent lighting that can be increased and decreased, depending on the mood of your gathering. For example, dim light is better suited to dining and intimate gatherings, while brighter light is great for more casual kitchen parties. Installing a dimmer switch on your lights lets you crank it up or down as needed, so you don't have to commit to one type of light – or party!

TIP: Candles are a must at this time of year, adding a key layer to your lighting strategy, not to mention their aesthetic attributes and aroma! But be safe and never leave a candle unattended.



The holidays should be a time of fun and joy, but for many, they are also a source of stress. Take the overwhelm out of the holidays by planning ahead and being prepared. Your gatherings don't have to be overblown or overdone. Just a little thoughtful planning and preparedness will ensure that you enjoy the season just as much as your guests do! **OH**

Patti Wilson, principal of award-winning Patti Wilson Design, is known for creating stylish, thoughtfully curated, livable interiors.



WOW WITH A CENTREPIECE

What's the first thing people see when they enter your home? Many open-concept homes open to a dining area or kitchen with an island, making these the perfect place for a seasonal centerpiece. This will welcome and wow anyone who walks into the home – yourself included! You can't go wrong with a classic floral centerpiece, but stick to the season with elements like evergreen boughs, pinecones and even consider incorporating seasonal fruit and vegetables. One particularly fun thing about the holidays is the opportunity to really lean on the theme and be a little bit extra with light strings, shimmering baubles, ribbons, feathers or candles.



Serendipity SOY CANDLES

DISCOVER SOMETHING BEAUTIFUL

HAND POURED SOY CANDLES
PROUDLY MADE IN CANADA
CLEAN BURNING

FRANCHISES AVAILABLE

9 LOCATIONS
Collingwood Outlet - Collingwood Downtown
Oakville Downtown - Oakville Place - Barrie - Hamilton -
St. Catharines - Kitchener - Pickering - London
Online: serendipitycandlefactory.com
VISIT OUR WEBSITE FOR MORE INFORMATION ON OUR LOCATIONS

THE TABLE & CHAIR CO. Inc
London's Most Unique Furniture Location
Quality furniture at comfortable prices for your home & office

DINING ROOM EXPERTS
44 Meg Drive (off Exeter Road), London
519-668-1200 • 1-800-265-1208
www.tableandchair.ca

2023 HOME SHOW

Joe Thornton Community Centre
Mar 24 – 5-9 | Mar 25 – 10-8 | Mar 26 – 11-5
www.25percentmore.com

VENDOR REGISTRATION NOW OPEN
Visit www.stthomashomeshow.org to register & pick your own booth!
Email stthomashomeshow@25percentmore.com for more info



Sweater BLANKET

PROJECT AND PHOTOGRAPHY **TARA CHATTELL**

Does your family have a stack of old sweaters no one wears? Upcycle those sweaters into a cosy blanket.



TOOLS & MATERIALS

(Makes a 40- by 70-inch blanket)

6-8 sweaters
(amount depends on sweater sizes)

Soft backing fabric at least 42 by 72-inches
(fleece, minky or chenille)

10 ½ by 10 ½-inch and 5 ½ by 5 ½-inch pieces of card stock or cardboard for cutting templates

Sewing machine

Fabric scissors

Polyester sew-all thread

Sewing pins

Sewing clips (optional but helpful)

Yarn (optional for decorative edging)

Yarn needle (optional for decorative edging)

HOW-TO

Wash and dry sweaters and backing fabric so your finished blanket won't shrink.

We're making a 40- by 70-inch blanket, made of four 10-inch squares (wide) by seven 10-inch squares (long) – a total of 28 10-inch squares for your blanket. Smaller five-inch squares are sewn together in sets of four to create larger 10-inch squares. You can adjust your blanket to any size you like depending on the number of squares you're able to cut from sweaters, as well as the width of the backing fabric you have available. Our templates are ½-inch larger than the final 10-inch and five-inch sewn squares to accommodate for a ¼-inch seam allowance.



Cut along sweater seams to separate pieces, then flatten to make cutting small squares easier. Place your templates on a sweater piece and begin cutting squares until you have enough to fill the entire blanket. You can cut squares that include loose waistbands, but remove and avoid fitted, tight waistbands. You can cut smaller squares from sleeves once they've been cut open and laid flat.

When you have enough large and small squares combined to make up 28 10-inch squares, lay them out on the floor until you have a design you like. Take a picture of your final design to use as a reference when sewing.



Number some paper squares 1 through 7. Begin stacking your cut sweater squares for each row on top of each other from left to right and top with the corresponding row number. Then stack the rows together, with row 7 on the bottom and transfer the stack to your sewing table.

Beginning with row one, start sewing smaller squares together to create larger squares and place them back in the correct order (this is where your reference photo comes in very handy!). Then, place the first two larger squares together, right sides facing in, pin (or clip) and sew along the inside edge. Continue sewing together the remaining squares until the row is complete. Repeat this process until all squares are sewn together into 7 separate rows of four 10-inch squares each.



Once all rows are complete, begin pinning and sewing the rows together with right sides facing in, starting with rows one and two. When all rows are sewn together you will have a complete top layer for your blanket. Helpful hint: When pinning (or clipping) the rows together, start by matching the seams and then pin along the rest, stretching and scrunching a little as needed. Knit sweaters vary in thickness and elasticity, so don't worry if things don't line up perfectly.



Lay your backing fabric on the floor right side facing up. Lay your completed sweater layer face down on top of the backing fabric. You'll want to pin together the layers in a few places around the blanket to hold things in place while trimming your backing fabric to match your top layer. Begin cutting your backing fabric along the edge of your top layer and pin (or clip) along the edges as you go.



Begin sewing the two layers together along the edge of the blanket, leaving a little less than a full square open. Using the opening, turn your blanket right side out.



To finish your blanket you have two choices: You can top-stitch around the entire blanket with your sewing machine, about ¼ to ⅜ inch in from the edge, closing the opening as you go. Or, (if you have some hours to kill while bingeing a TV series) you can choose to do a decorative blanket stitch by hand with some yarn and yarn needle. The blanket stitch option is very time consuming but creates a very nice decorative edge on your blanket. There are many blanket stitch tutorial videos online if you've never done this stitch before.



Et voila! You're ready to snuggle up with your new blanket and a good book. **OH**

OUR HOMES attracts the area's finest businesses to advertise in our pages, and utilize our unparalleled distribution and coffee-table appeal to market their products and services. We're making it easier for you, our readers, to become educated as you plan your home- and real estate-related purchasing decisions. View these business ads online at ourhomes.ca. The listings below are organized alphabetically by industry.

APPLIANCES

Arva Appliance Centre, 21
London Major Appliances, 9

**ART/ARTISANS/ART GALLERIES/
STUDIOS/WORKSHOPS**

Serendipity Soy Candle Factory, 77

**AUDIO VIDEO/HOME AUTOMATION/
ELECTRONICS/SMART HOME
TECHNOLOGY**

Schneider Electric, 15

**BEDS & BEDDING/MATTRESSES/
SLEEP PRODUCTS**

Covers Canada, 41

BUILDERS

CCR Build + Remodel, 5
Details Custom Ltd., 71
Domus Developments, 17
Donwest Custom Homes, 23
Legacy Homes of London, 47
Sifton Properties Ltd., 84
Vranic Homes Inc., 69

**CABINETS & MILLWORK/CARPENTRY/
FINE WOODWORKING/CUSTOM
FURNITURE**

Martin Jesko Custom Cabinetry, 59
The Wood Studio, 42&43

CLINICAL RESEARCH

KGK Science, 21

**CLOTHING/FASHION/
FOOTWEAR/JEWELRY/
LUGGAGE & LEATHER GOODS**

Boutique Firenze, 55, 81

CONSIGNMENT

ReDecor Consignment, 11

COUNTERTOPS

Sloan Stone Design, 35

ELECTRICAL

Schneider Electric, 15

FIREPLACES & STOVES/ACCESSORIES

Guildwood Lighting & Fireside, 17

FLOORING

Floor Source, 25
Sunshine Exotic Hardwoods, 3

**FOOD & DRINK/RESTAURANTS/
CATERING/DELI**

Steel Grill Catering, 71

**FURNITURE & HOME DÉCOR/
ACCENTS/GIFTS/COLLECTIBLES**

Dale + Company, 71
Featherfields, 10, 81
London Fine Furniture, 47
Oak and Linen Home, 57
ReDecor Consignment, 11
The Table & Chair Co., 77

HEATING & COOLING

Carver Sheet Metal, 63

HOME ENTERTAINMENT

Schneider Electric, 15

**HOME IMPROVEMENTS/
RENOVATIONS**

CCR Build + Remodel, 5

**INTERIOR DECORATING/INTERIOR
DESIGN/HOME STAGING**

Design House London, 55
Quantum Verdi, 25
Sarah Atiq Interiors, 10, 81

KITCHEN & BATH

Aqualuxe Bath Showroom, 37
CCR Build + Remodel, 5
Ultimate Bath Systems London, 49

LIGHTING

Guildwood Lighting & Fireside, 17

Living Lighting, 27

NEW HOME COMMUNITIES

Donwest Custom Homes, 23
Fountain West – Legacy Homes
of London, 47
Landings Port Stanley – Domus
Developments, 17
Riverstone – Sifton Properties Ltd., 84
Vranic Homes Inc., 69

OUTDOOR FURNITURE/STRUCTURES

Backyard Escape Studios, 6

PAINTING & DECORATING

Benjamin Moore, 4
Clancy's Rainbow, 4, 55

REAL ESTATE

eXp Realty Canada – Rahim Charania
Real Estate Group, 71
The Realty Firm Inc. – Melody Gilmore, 57

SPECIAL ASSOCIATIONS

London Home Builders' Association, 25
St. Thomas & Elgin Home Builders'
Association, 77

SPECIAL EVENTS

Lifestyle Home Show – London Home
Builders' Association, 25
St. Thomas Home Show – St. Thomas &
Elgin Home Builders' Association, 77

WINDOW TREATMENTS

Blinds By Design Ltd., 35
Budget Blinds, 2, 75, 81
Covers Canada, 41
Custom Shades Of London, 83
Sunrise Rollups and Shades, 7

WINDOWS & DOORS

Golden Windows, 37
Heritage Renovations Windows
& Doors, 73
North Star Windows and Doors, 13



**BUDGET BLINDS
OF LONDON**

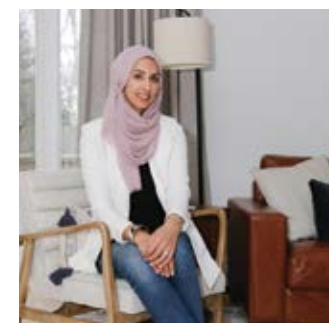
Budget Blinds of London is a family business in the truest sense. The franchise is owned and operated by Brian and Ashley Vermunt who have been living and breathing everything to do with custom window coverings since 2012. Ashley's mom, Barb, works in customer service. Cousin Matt heads up the installs and Brian's brother Scott is the Design Consultant for London and area.

Valuing every customer like family has earned Budget Blinds of London the Consumer Choice Award in the category of Custom Window Treatments for 2020, 2021, 2022, and 2023.

Budget Blinds has partnered with Lutron®, the worldwide leader in smart home technology, to offer unparalleled convenience in powering your smart shades and blinds with the touch of a button. Lutron and Budget Blinds of London make smart home automation easy to use and easy to afford! With Lutron's whole-home wireless automation, your shades and blinds open and close at the touch of a button, or at a pre-selected time of day or night, giving you effortless control of your smart shades and blinds.

From the first call to the final installation, Budget Blinds of London's simple approach of providing high-quality products and treating each client the way they would like to be treated, is evident.

226.289.7881
budgetblinds.com/london-on
(Please see ads on pg 2, 75)



SARAH ATIQ INTERIORS

Sarah Atiq is the award-winning founder and principal designer of Sarah Atiq Interiors.

Originally from Edmonton, Sarah moved to London in 2004. After receiving her business degree and subsequent decorating designation, she established herself as a trusted source of design advice for her clients.

Sarah Atiq Interiors offers Residential Design for New Builds and Renovations.

The firm believes in creating timeless, sophisticated spaces with an element of contemporary style.

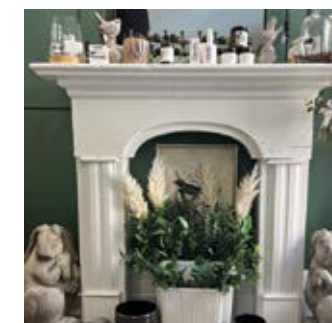
Functionality and fundamental design principles are essential to making her clients' everyday routine that much easier.

The firm provides full-service design. From consult, to conceptual drawings to picking the last details of the home, SAI will make the process that much smoother!

Our consult consists of an on-site 90-minute meeting to discuss the space you have envisioned and providing you with suggestions on how your vision can come to life.

If you feel you need an update or need to freshen up the style of your home, we offer a partial home refresh or design concepts for individual spaces. We offer expert advice on new furniture layouts and pieces for your space.

Please contact us to find the best service fit for your project!
info@sarahatiqinteriors.com
sarahatiqinteriors.com
(Please see ad on pg 10)



**FEATHERFIELDS – THE BIRD
AND GARDEN STORE**

There are few shops better tailored to the love of nature than Featherfields – The Bird and Garden Store, located in Hyde Park and Wortley Village. It is a haven for bird lovers, gardeners, and all those who love something truly unique. We are an independently-owned wild bird and garden shop, as well as a popular destination for unique gifts for the whole family.

Featherfields focuses on Canadian, handmade products that set us apart, and a knowledgeable and experienced team that can help you find that new addition for your backyard, home, or pick out that perfect gift.

We have something for everyone in the family, from kids nature books and activities, to bird seed and feeders, seasonal home décor, and so much more.

With delivery available in London, online shopping 24/7 at Featherfields.com, and two beautiful store locations in Hyde Park and Wortley Village, we welcome you to come check us out!

1570 Hyde Park Rd,
London | 519.474.1165
173 Wortley Rd,
London | 519.672.8958
featherfields@featherfields.com
featherfields.com
(Please see ad on pg 10)



BOUTIQUE FIRENZE

The idea for Boutique Firenze was born when I visited Italy for the first time in 2007; we were awed by such beautiful things, many still made in the artisanal way. Wouldn't Londoners love to see the wonderful products made in Florence, Venice and Naples? So we began selling gloves and scarves part-time, and then opened Boutique Firenze as a permanent shop in 2017.

We bring you fine Italian gloves, handmade from lambskin, and colourful scarves in silk, linen, cashmere, wool blends and easy care acrylics. You will find styles for both men and women, to give everyone a touch of affordable and practical elegance.

Boutique Firenze has expanded its Italian products to include jewelry, fine soaps and toiletries, stationery and Murano glass. In addition, we showcase a variety of beautiful Canadian accessories and gifts made by artisans from London and across the country. Our growing selection of products by First Nations designers continues to be very popular.

Please check our Facebook page for new product updates, plus stories and photos about Italian travel, art, and recipes. We appreciate our loyal customers – thanks for supporting local small business during this difficult time. See you soon – a presto!
Bettina Weber, Owner
189 Adelaide St S, London
519.649.4122
boutiquefirenze@gmail.com
boutiquefirenze.ca
(Please see ad on pg 55)

OUR HOMES is committed to ensuring the businesses above appear under the correct headings. To make a correction, or to have your business listed under more than one heading, please email lisa.ormsby@ourhomes.ca or tyler.annette@ourhomes.ca. To have your business listed in our Home Resource Directory, call us to advertise at 705.607.0411 or 705.888.5706.

finishing touch

SOLID *sleep*

Metal bed frames are back in style in a big way in all shapes and sizes. Cast Iron beds were developed in the early 1800s, providing a sterile and durable base. They are still a healthy choice and look great in bedrooms for people of all ages.



BERNHARDT:
Buchanan Canopy Bed



UNIVERSAL: Past Forward Poster Bed



CRATE & BARREL:
Gracia Canopy Bed



TAKE COVER

PHOTO: SANDY MACKAY



CRATE & BARREL:
Canyon Arched Canopy Bed



BERNHARDT:
Milo Canopy Bed



UNIVERSAL:
The Guest Room Bed



VINTAGE INSPO

PHOTO: SANDY MACKAY

ALL THAT GLITTERS...



MADE GOODS:
Laken Canopy Bed



CRATE & BARREL:
Mason Brass Bed



MADE GOODS:
Brennan Bed



CB2: Alchemy Bronze Bed



CRATE & BARREL:
Cora Black Iron Bed



PHOTO: SANDY MACKAY

COTTAGE CHARM



Luminette® Privacy Sheers and Silhouette® Window Shadings

Motorization/Automation Specialists

Hunter Douglas Gallery in London

At Custom Shades of London we pride ourselves in working with you every step of the way to find you the perfect window treatments for your home.

Lean on our experts for design direction, product knowledge and seamless installation.

- ◆ Friendly Service
- ◆ Professional Installation
- ◆ Quality Window Coverings

London's Only Hunter Douglas Gallery Dealer



Sonnette™ Cellular Roller Shades with LiteRise

CustomShades
of London

1422 Fanshawe Park Road West, Unit 3A
London, ON N6G 0A4
519-601-4443 • customshadesoflondon.ca

HunterDouglas

HunterDouglas Gallery®



**LIMITED
UNITS
AVAILABLE!**

Riverstone Villas - NOW LEASING!

A new home for the holidays! Nestled in West 5, Riverstone Retiree Villas are a private enclave of 20 one-storey units for those wishing to maintain a larger home in their retirement.

Move in now and start enjoying a worry-free lifestyle before the snow flies. We'll take care of snow removal and monthly housekeeping, while you enjoy rooftop dining, an on-site fitness studio and relaxing lounge. You've earned this!

Book your tour today!

519.474.4410 | LiveAtRiverstone.ca

riverstone

By 