

CHANTEL
CRISP

REAL ESTATE TEAM



7826, 7824 & 7822 PIPERS HILL ROAD



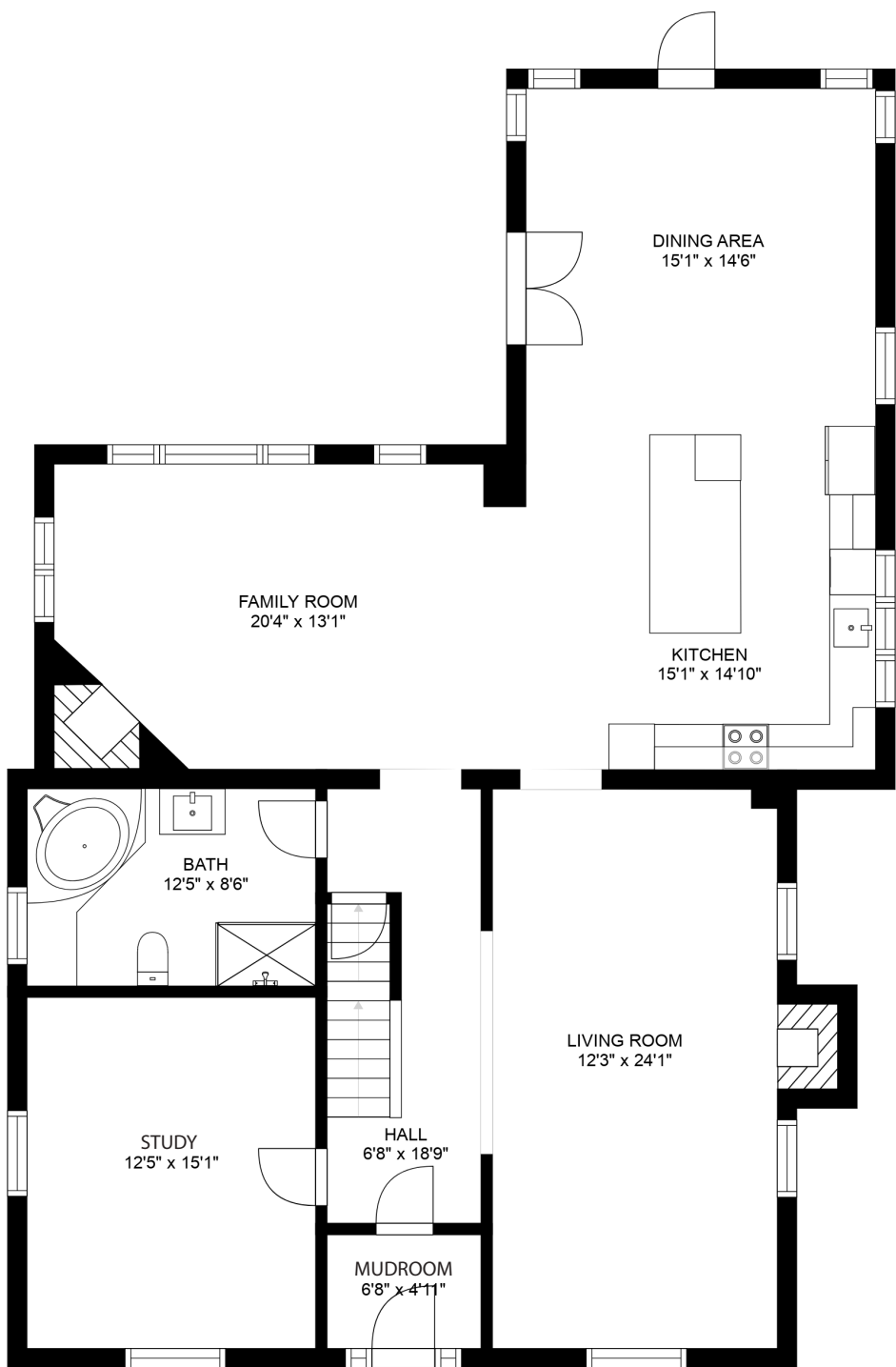
Welcome To Pipers Hill Acres

Majestic Victorian Estate Located On 16 Private Acres With Views For Days Of The Lush Rolling Hills, Woodlands, Groomed Paths, Serene Creek, Epic Sunsets, And A Revenue Stream Of Dreams From 3 Homes. This Peaceful Sanctuary Boasts An Exquisite Victorian Modern Farmhouse + 2 Guest Homes + 2 Private Driveways + Solar Panel Income = \$150K+ In Turn-Key Annual Income. Each Home Is Meticulously Renovated, Sun-Drenched & Spacious With High Vaulted Ceilings, Large Bedrooms, Roomy Bathrooms, Wide-Plank Flooring, And New Finishes Throughout, While Maintaining The Historic Charm. This One-Of-A-Kind Compound Is Move-In Ready & Holds Endless Opportunities For A Live/Work/Play Combo, Multi-Generational Families, Events & Ongoing Rental Income. The Enormous Garage + Carport + Loft Has Potential For Coach House Apartment Conversion. Located On A Quiet Road Off The Beaten Path, You Will Enjoy Remote Privacy Less Than 1Hr To Toronto And Only 5 Mins To Tottenham. Top School District St James Rated 9.2/10

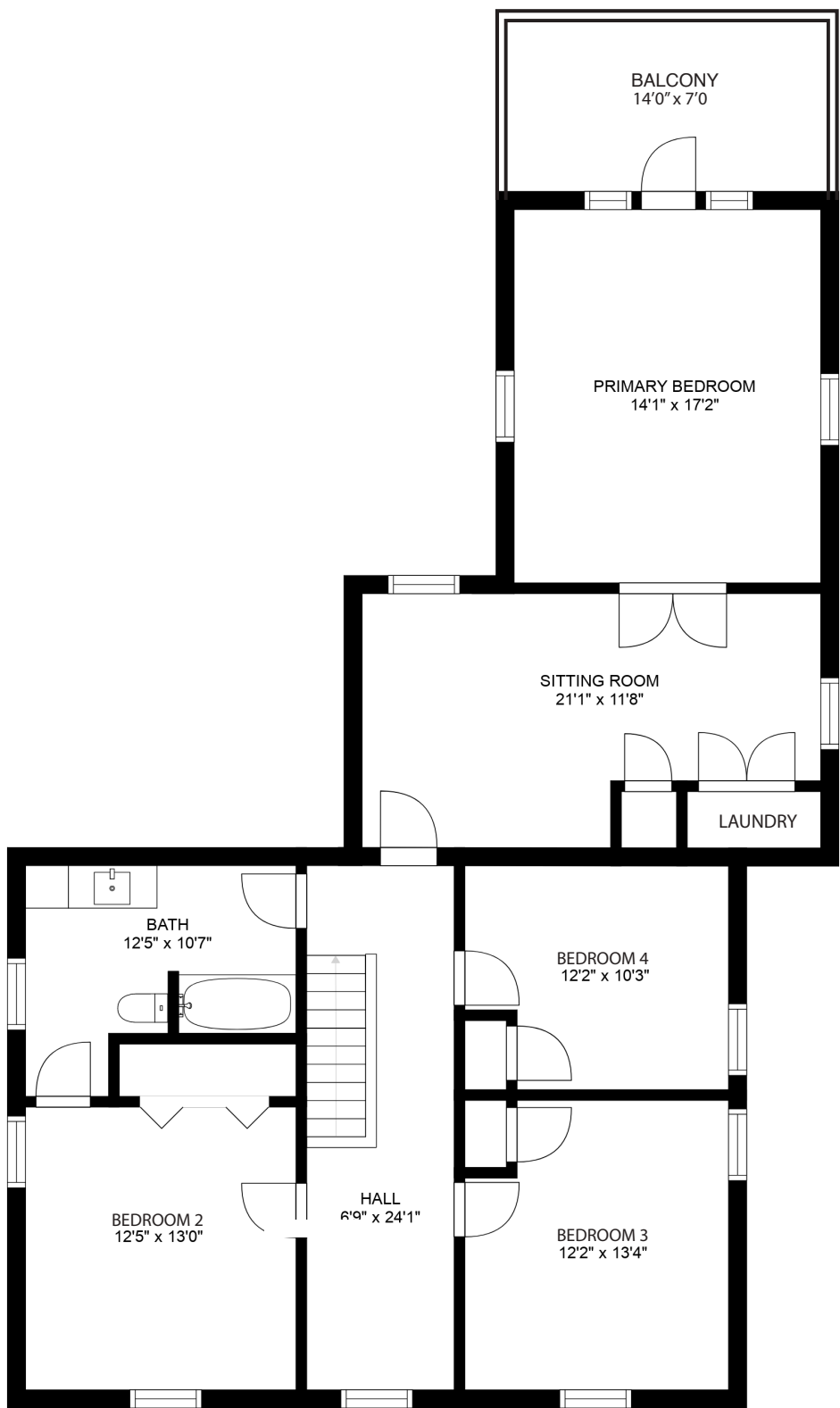


7826 PIPERS HILL ROAD, LORETTO

MAIN FLOOR



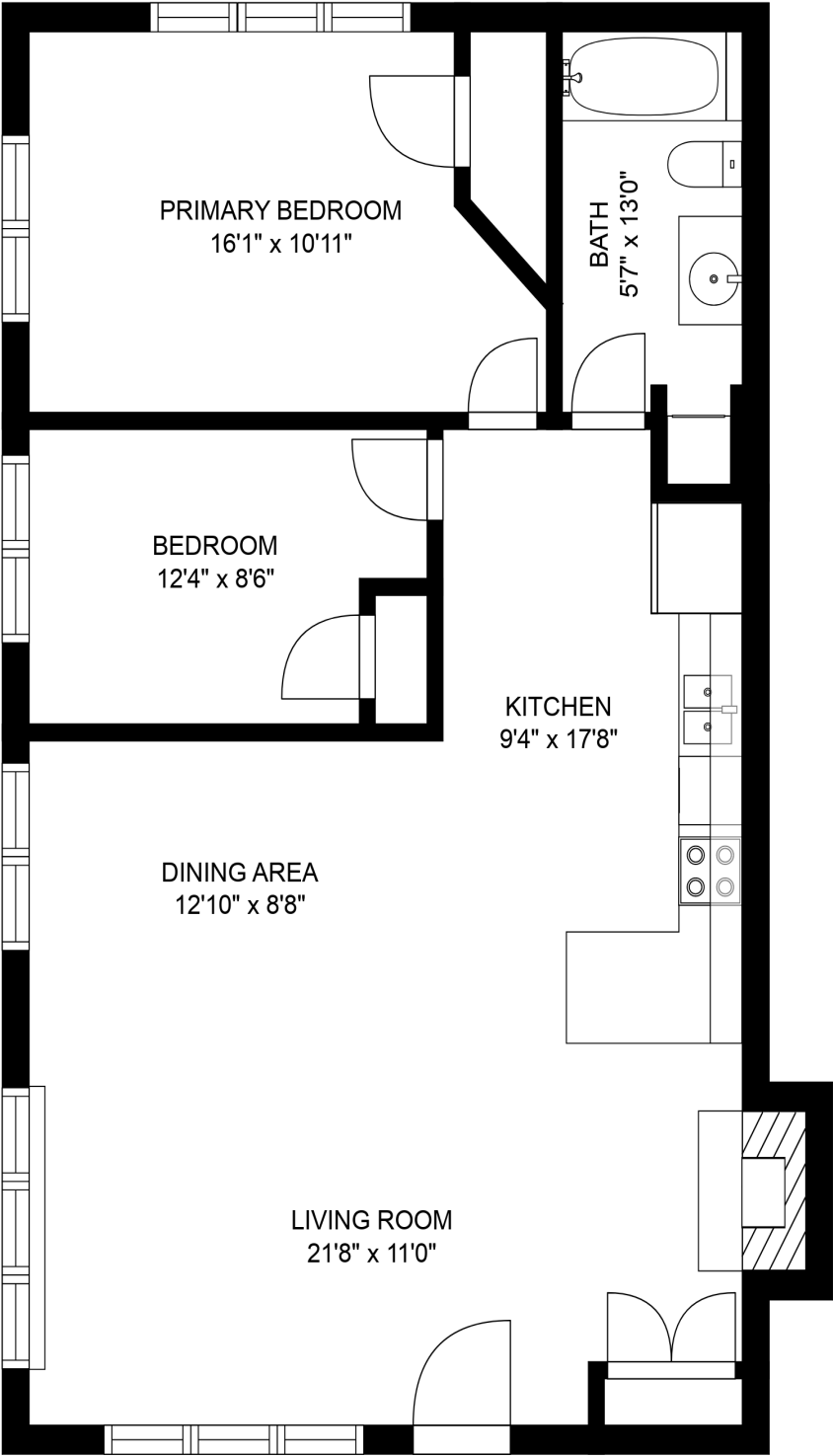
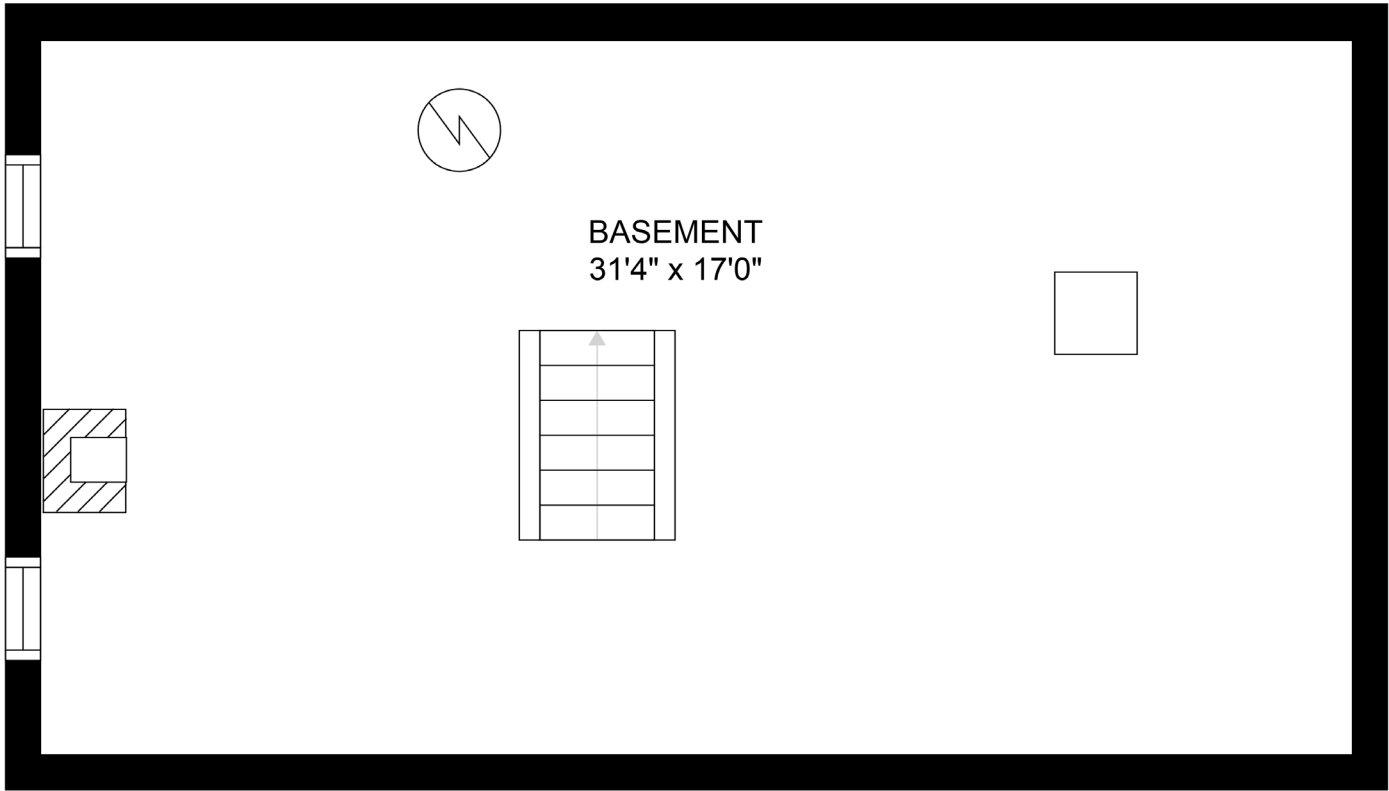
SECOND FLOOR



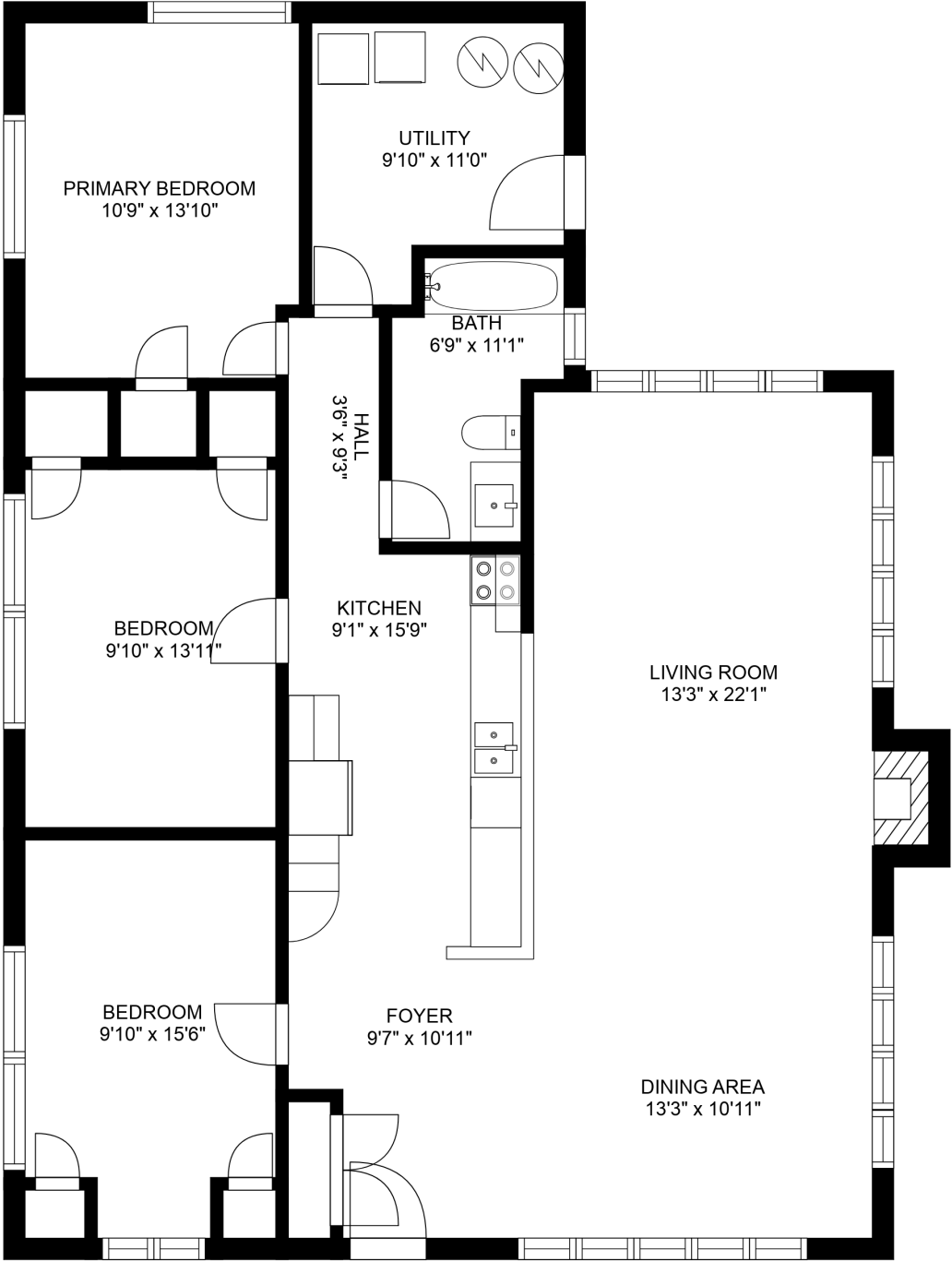
7824 PIPERS HILL ROAD, LORETTO

7826 PIPERS HILL ROAD, LORETTO

BASEMENT



7822 PIPERS HILL ROAD, LORETTO



Neighbourhood: Rural Adjala-Torsorontio

- Main Intersection: Highway 50 & County Road 14

Neighbourhood Features Near Property

- Major Highways: Highway 50, Highway 400, Highway 9 and Highway 27
- Groceries: Vince’s Market
- Shopping: Tottenham Mall & Beverly Hills Nail Boutique
- Entertainment: Tottenham Recreation Centre & Area, Teen Ranch Canada, Puck’s Farm It’s Fun, Mayfield Recreation Complex, Caledon Center For Recreation & New Techumseth Recreation Center.
- Restaurants: A Taste Of Freedom, China Garden, 1 Fish 2 Fish, Tottenham Piri Piri & Enzo’s Stile Tradizionale.
- Schools:
 - Elementary – St James Separate School (Rating 9.20), Tecumseth South Central Public School (Rating 6.10), Palgrave Public School (Rating 6.50),
 - Secondary – St Thomas Aquinas Catholic School (Rating 6.30), Banting Memorial District High School (Rating 6.80), St. Michael Catholic Secondary School (Rating 7.30)
- Hospital: Medical Centre, Truenoth Medical Centre & Stevenson Memorial Hospital

Specifications:

- Year Built: 1900
- Property Tax Year: 2022
- Property Taxes: \$6,412
- Main Farmhouse:
 - o # of beds 4 + 1
 - o # of baths 2
- Big Bungalow:
 - o # of beds 3
 - o # of baths 1
- Small Bungalow:
 - o # of beds 2
 - o # of baths 1
- Rental Appliances: Main House: Furnace & AC, Big Bungalow: Heat Pump @ \$79.99 + HST, Small Bungalow: Furnace & AC
- Included Chattels: All Electrical Light Fixtures, All Window Covers And All Rods, 3 Sets Kitchen Appliances, 2 Sets Of Washer/Dryer, 1 Stacked Washer/Dryer





Contact us today for your private viewing.



WWW.CHANTELCRISP.COM

CHANTEL CRISP
BROKER

DIRECT 647.967.9677

OFFICE 416.443.0300

EMAIL chantel@chantelcrispteam.com



Signature Realty
IND. OWNED & OPERATED BROKERAGE

Royal LePage Signature Realty, Brokerage

Shops at Don Mills | 8 Sampson Mews, Suite 201, Toronto, ON. M3C 0H5