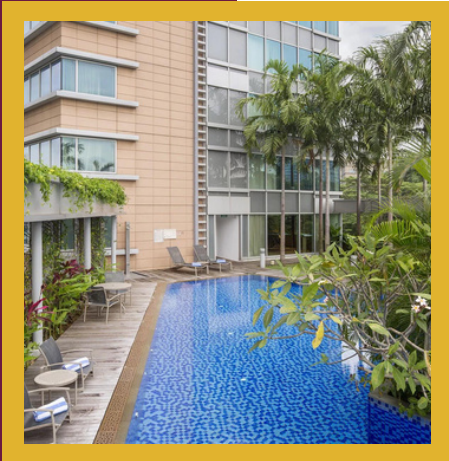




Singapore HOTEL RECOMMENDATIONS

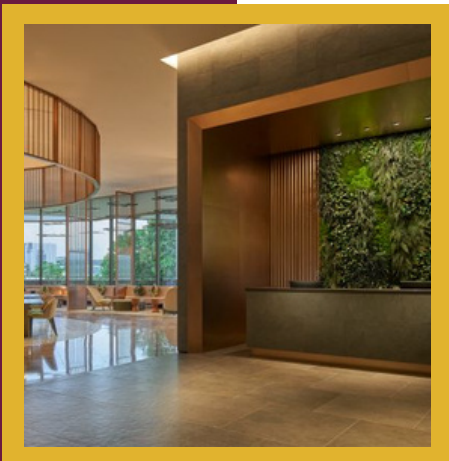


1

Park Avenue Rochester

Cuddled by lush greenery, Park Avenue Rochester is a blissful urban retreat whether you are here for business or leisure. Located a short walk from Buona Vista MRT Station and just minutes away from business districts located in the Western and Central part of Singapore like One-North, Science Park, International Business Park, and Mapletree Business City, it is a perfect place to stay with a pool, gym and many dining options nearby.

9 minutes in a car from UWCSEA Dover Campus.
27 minutes in a car from UWCSEA East Campus.

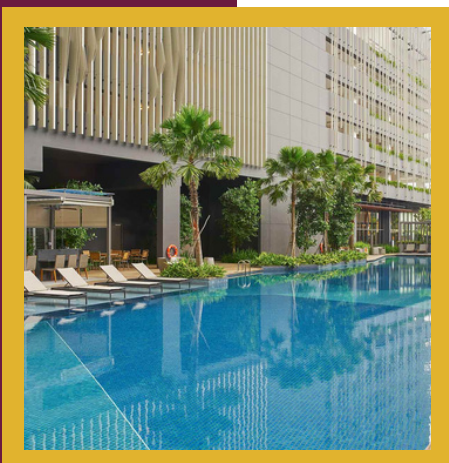


2

Citadines Connect Rochester Singapore

Conveniently located near the Buona Vista and one-north MRT stations, Citadines Connect Rochester hotel apartments in Singapore are ideally situated as a base to explore the country's life science, education, and dining hub. Numerous dining and entertainment options exist, ranging from restaurants within the neighboring conservation bungalows to Timber+ at One-North, Holland Village, and Star Vista (Theatre).

10 minutes in a car from UWCSEA Dover Campus.
27 minutes in a car from UWCSEA East Campus.



3

Oasia Residence, Singapore

Located in the West Coast area, Oasia Residence, Singapore, offers short and long-term stays, which exemplifies a tranquil home away from home combining prime location, best value, and attentive service. Oasia Residences sits on the fringe of the city's bustling science and technology cluster. Just minutes drive away from the National University of Singapore, the Singapore Science Park, and one north.

11 minutes in a car from UWCSEA Dover Campus.
31 minutes in a car from UWCSEA East Campus.

Singapore HOTEL RECOMMENDATIONS



4

InterContinental Robertson Quay

Awarded Singapore's Leading Lifestyle Hotel at the World Travel Awards 2022 for the fourth year running, enjoy sophisticated riverfront living at InterContinental Singapore Robertson Quay. Luxury's preferred address is nestled in the heart of Robertson Quay along the Singapore River.

Hideaway in one of 225 light-filled studios and suites equipped with bespoke amenities and modern luxuries.

**16 minutes in a car from UWCSEA Dover Campus.
25 minutes in a car from UWCSEA East Campus.**

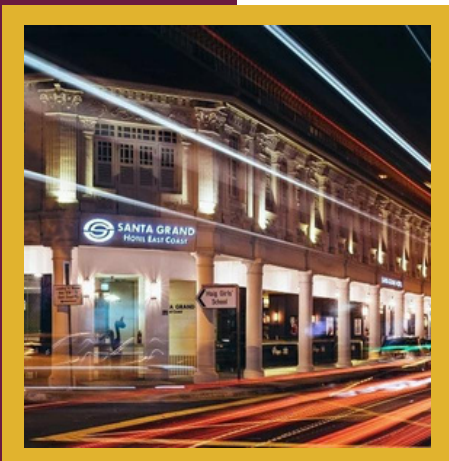


5

Swissotel The Stamford

Step into a world of modern comfort at Swissôtel The Stamford, one of the tallest hotels in Southeast Asia. Experience sincere and smart hospitality that is part of our Swiss DNA through our innovative and technology-enhanced fixtures and fittings; intuitive design that serves to make a difference to your happiness and well-being; and a passionate and caring team that takes care of you from the moment you arrive to the moment you leave.

**18 minutes in a car from UWCSEA Dover Campus.
20 minutes in a car from UWCSEA East Campus.**



6

Santa Grand Hotel East Coast

Situated near the eclectic cultural belt of the East, staying at Santa Grand Hotel East Coast is a good start to exploring Katong and Joo Chiat. Embodying the Chinese Baroque architecture, the hotel building is well conserved to retain the rich local Peranakan heritage. Step out of the hotel and explore the local area. You will discover the colorful and beautiful traditional shophouses that were occupied by Peranakan families and tradespeople in the 1920s and 1930s

**25 minutes in a car from UWCSEA Dover Campus.
20 minutes in a car from UWCSEA East Campus.**