

An aerial photograph of a white, two-story house with a dark roof, situated in a lush, green rural landscape. The house is surrounded by trees and a well-maintained lawn. In the background, there are rolling hills, fields, and a dense forest. The sun is low on the horizon, creating a warm, golden glow over the entire scene. The sky is a mix of light blue and soft orange.

CASA LANE

SERENE COUNTRYSIDE HOME

KNOWLTON AND CO

ABOUT CASA LANE



Casa Lane is a 4 bedroom, 4 bath home with a beautiful bank barn & drive shed located on 49 acres of land. It is private, calm, serene ~ all the things that comfort is made of.

We named it CASA LANE because the long, scenic laneway lined with fields and trees leads you to the heart of this beautiful property.

Every attention to detail has been an intricate part of this renovation... from the oak floors, stunning handcrafted tiles, custom cabinetry, gorgeous fixtures, and everything in between.

There's a unique blend of tranquility and sophistication, and a perfect escape from the hustle and bustle of city life. The peaceful surroundings and countryside views create an atmosphere of peace and calm, ideal for a slower, more mindful pace of life.





PROPERTY:

- 49.3 acre property
- 885' lot frontage, 2,533' lot depth
- Prime agricultural land, 20 acres workable, 5+ acres forested
- A1 zoning
- Renovated 115 year old farmhouse with 750 sq ft extension, bank barn and driveshed

HOME :

- New brick
- New roof
- New Marvin windows
- New septic
- New wooden soffit and Fascia
- New eavestrough with buried water runoff
- Drilled well
- 2 1/4" solid oak exterior doors – Bluetooth lock on mudroom
- 2 -12' porches with second floor walkouts
- Soffit lights
- Skylight
- New 200 amp electrical. Electrical line buried to the house and barn
- Viessmann propane boiler, air handler, heat pump, water softener, iron remover
- Central heat and air conditioning
- Appliances –Bespoke LG column fridge and freezer, Bosch washer and dryer, Bosch dishwasher, Bertazonni 30" gas stove



INTERIOR :

- Custom cabinetry throughout
- Emtek brass door hardware
- Wooden trim
- Custom Balinese teak doors
- Hanstone quartz throughout
- Perrin and Rowe faucets throughout
- 9" solid oak floors
- Custom rattan kitchen banquette
- Custom oak railing and banister
- Push button dimmer light switches with brass fixtures
- Designer light fixtures throughout
- Custom pocket doors throughout
- Handcrafted solid Oak 7-8 ft doors throughout
- Custom trim
- Custom vanities



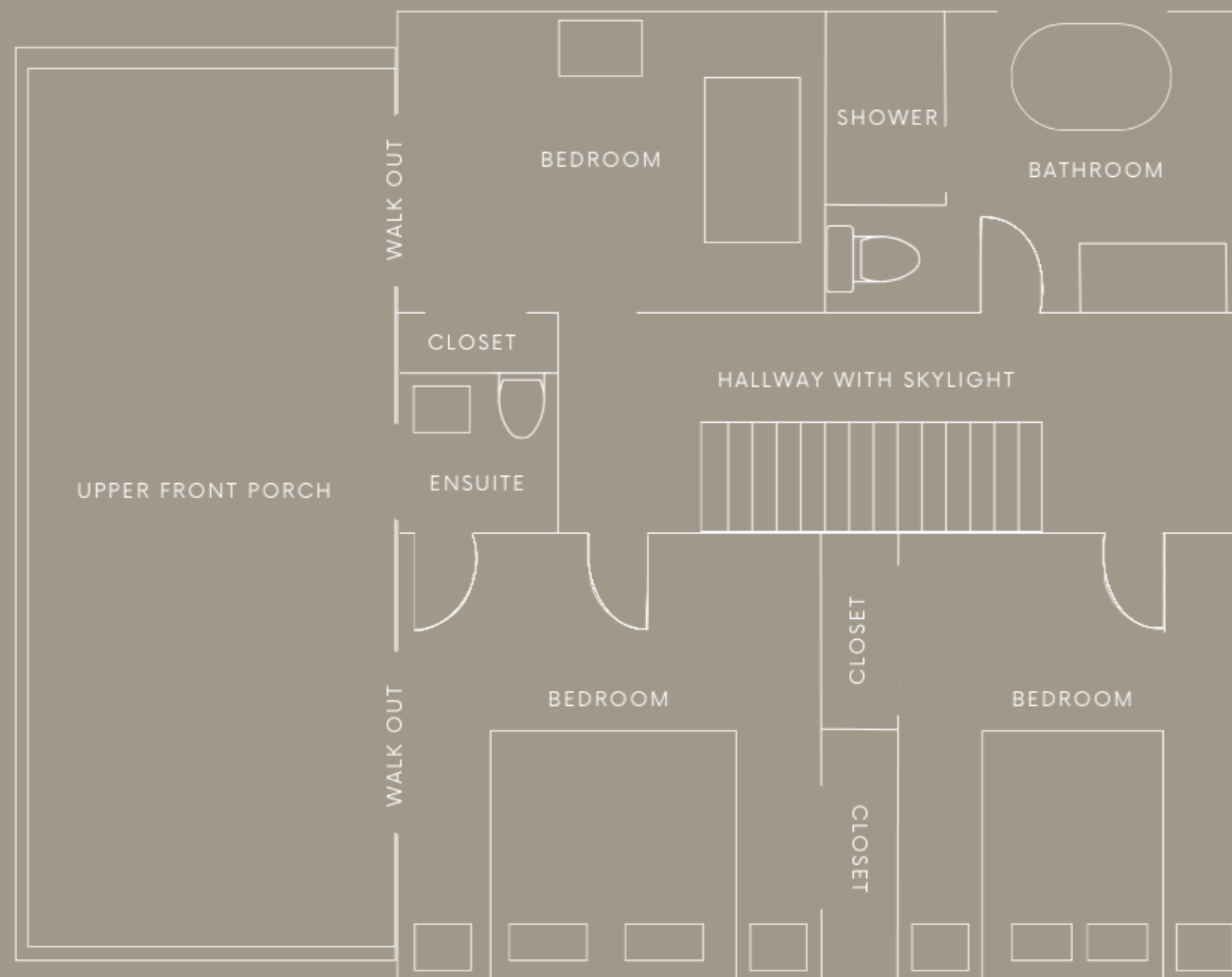
MAIN FLOOR NEW ADDITION :

- Includes mudroom, laundry room, primary bedroom, ensuite bath and walk in closet :
- In floor heat throughout
- 4 piece ensuite bath with zellige tiled steam shower and built in bench seat
- Primary has 9' sliding doors to 10' x 37' concrete walk out porch
- Laundry room with built in Bosch appliances and ample custom cabinetry storage
- Mudroom with 4 custom cabinetry lockers and bench seating
- Two side door entrances with 2.25 inch solid oak doors.

EXTERIOR AND BUILDINGS

- New gravel driveway
- New barn roof
- New barn 60 amp electrical
- New barn lighting and new barn plumbing
- 6 horse stalls with sliding doors
- Driveshed roof repair
- Landscaping

SECOND FLOOR PLAN



On the second floor you'll find 3 bedrooms, main bathroom with soaker tub and an ensuite bathroom. Two bedrooms have sliding doors to a walk out upper porch with gorgeous views for miles.

KITCHEN

Beautiful inset custom cabinetry with quartz countertop, backsplash and wall shelf. Bertazonni 30" gas stove, bespoke counter depth refrigerator and freezer and integrated Bosch dishwasher. Solid oak floors throughout. Perrin & Rowe unlacquered brass faucets, unlacquered brass hardware and stunning sink overlooking the fields and forests beyond.



DINING

The custom designed banquette has it all. Lots of great seating and beautiful light streams through the large Marvin windows.





LIVING ROOM

Casual living with beautiful windows throughout. Hardwire rough in for a wall Frame TV.





MUDROOM

Earthy tile. Built in lockers with custom cabinetry. Heated floors. Custom teak pocket door with reeded glass. Solid oak side entrance door with bluetooth locking Emtek hardware.

LAUNDRY ROOM

Bosch washing machine and dryer integrated with custom cabinetry and hinged with hideaway door fronts. Quartz countertops with custom cabinetry for storage. Heated floors, custom teak pocket door with reeded glass and all with a side entrance too.





POWDER ROOM

Onyx sink and reclaimed teak vanity table. Painted in gorgeous London Stone Farrow and Ball. Perrin & Rowe faucets, oak door and Emtek hardware.



PRIMARY SUITE

Serene and private with sweeping views for miles.





PRIMARY
SUITE



PRIMARY ENSUITE





NURSERY

Also ideal as an office, or bedroom.

MAIN BEDROOM UPSTAIRS





GUEST ROOM

Beauty with views for miles. A serene bedroom with a large closet and custom oak doors.



MAIN BATHROOM

A beautiful soaker tub overlooking the fields and forests. Gorgeous shower with Italian tile and Perrin and Rowe faucets.

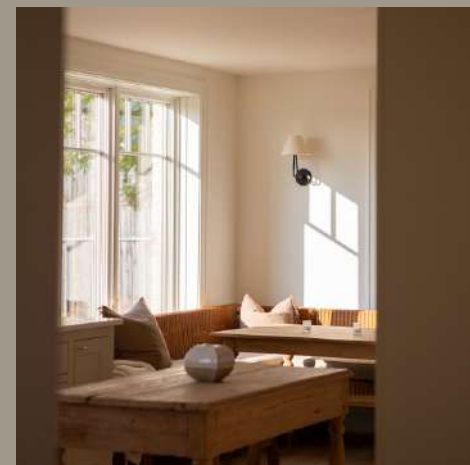
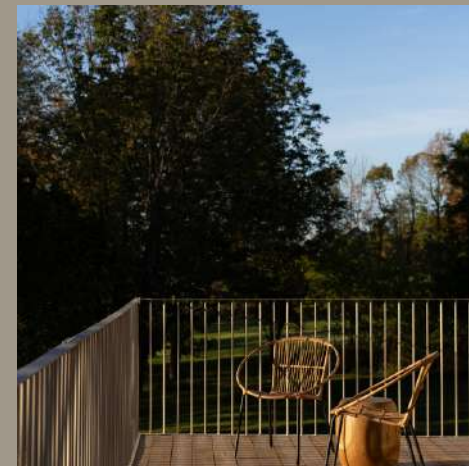


SOCIAL

We have been sharing the journey of renovating Casa Lane on our Instagram @KnowltonandCo. Follow along here.

See the Casa Lane story highlights here too.

Read all the details of the Casa Lane home with listing details, photos, video and sources here on our website.



CASA LANE

Instagram @knowltonandco

KNOWLTON AND CO
lynne@lynnenowlton.com
lynnenowlton.com