

# IPA

## Tracking Sheet for Directors

### Premier Club

Complete any 20 activities weekly.

### Cadillac

Complete any 30 activities weekly.

### Top Director Trip

Complete any 40 activities weekly.

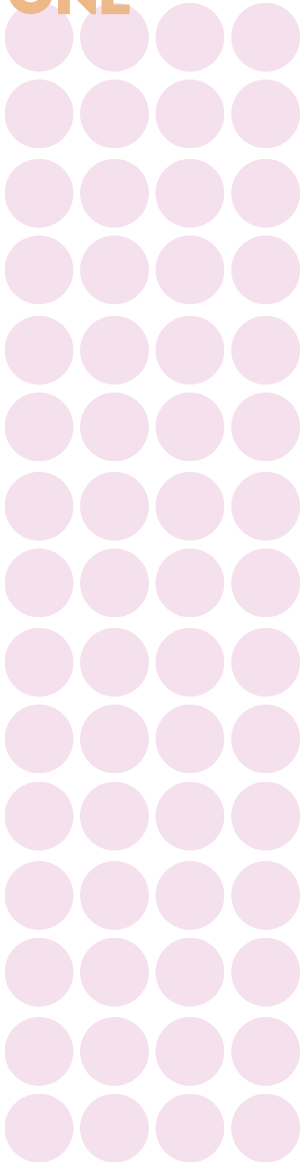
### Million \$ Director

Complete any 60 activities weekly.

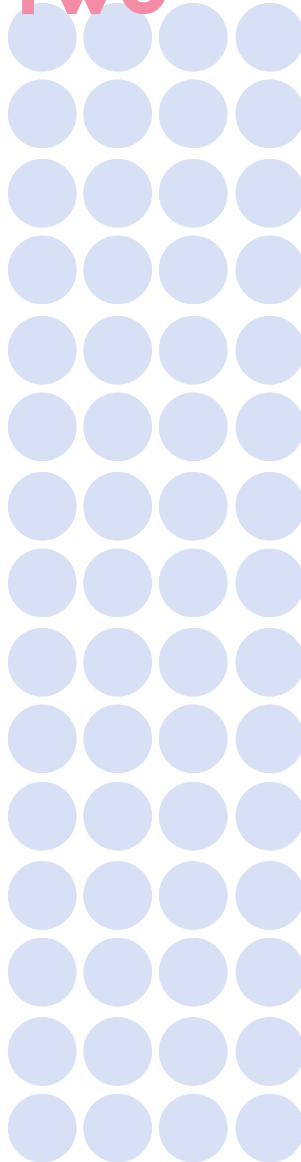
### MY IPA GOAL IS...

- |          |  |          |                                  |
|----------|--|----------|----------------------------------|
| <b>A</b> | Personal Skin Care Class (3 IPA's)       | <b>H</b> | 8 new personal Contacts          |
| <b>B</b> | \$100 in Sales (not from a class)        | <b>I</b> | New Unit Member                  |
| <b>C</b> | Guest follow-up within 24 hours of event | <b>J</b> | 2 New Bookings                   |
| <b>D</b> | Personal Interview & 24 hour follow-up   | <b>K</b> | New Consultant Orientation       |
| <b>E</b> | Unit Interview & 24 hour follow-up       | <b>L</b> | Unit Meeting                     |
| <b>F</b> | Personal Guest to an Event               | <b>M</b> | Personal Facial or Double Facial |
| <b>G</b> | 8 Contacts with Unit Members             |          |                                  |

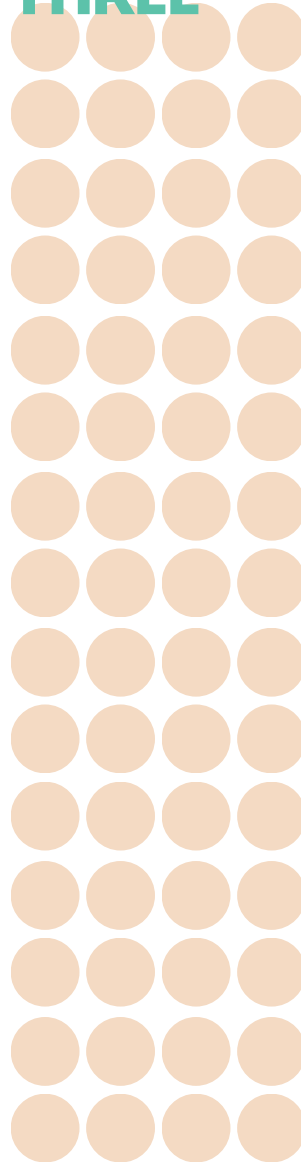
### WEEK ONE



### WEEK TWO



### WEEK THREE



### WEEK FOUR

