



THE BUILDING

WESLEYANONCOPLEY.COM

Located directly across from Copley Square Park in a boutique office building, the Wesleyan on Copley at 581 Boylston Street features two street-level retail suites and a full floor suite on the second level. The building will boast a new retail facade with ornate crown, new storefront windows, and metal signage banding.

SUITE C

6,081 SF

Up to 9'10" ceilings

14'-8" of frontage

FIRST FLOOR

1,990 SF

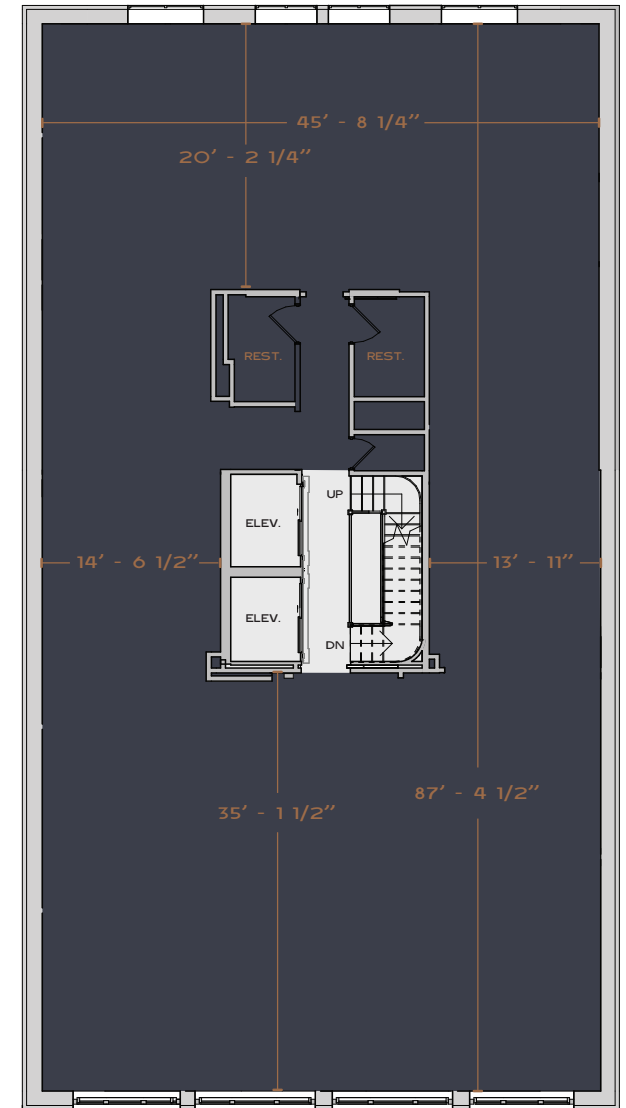
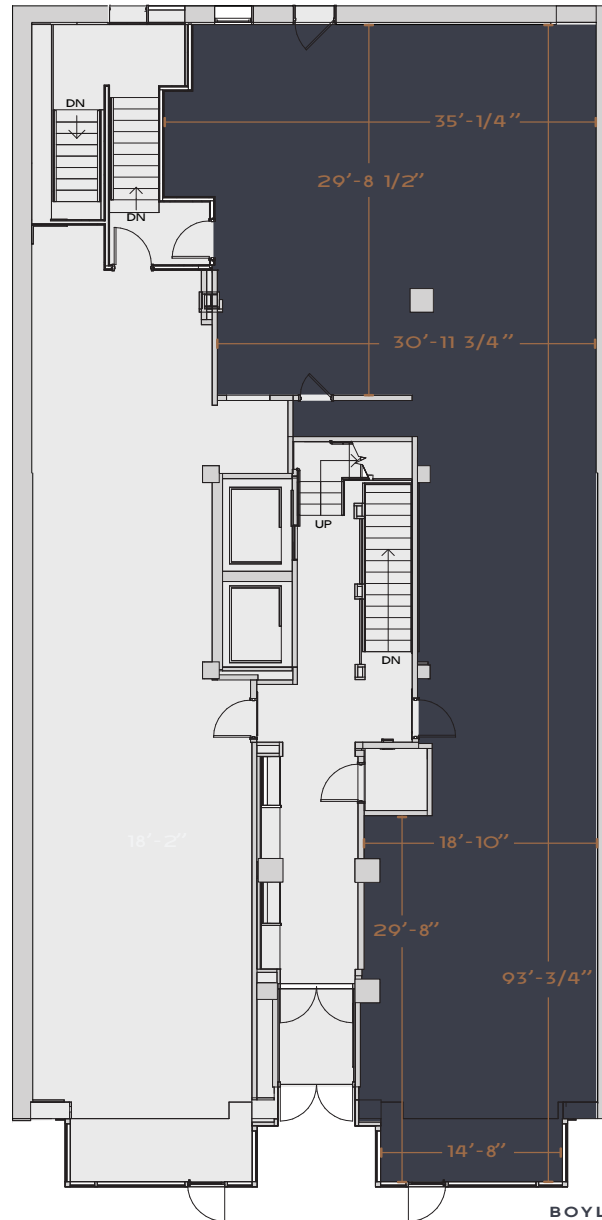
SECOND FLOOR

4,091 SF

FIRST FLOOR

PUBLIC ALLEY 439

SECOND FLOOR



BOYLSTON STREET

LEASING

WHITNEY GALLIVAN

617.850.9612

wgallivan@bradvisors.com

JOE WAGNER

617.850.9675

jwagner@bradvisors.com



CHEVRON
PARTNERS

Boston Realty Advisors