



EMMA LANE

H · O · M · E · S

MODERN HOMES FOR RENT

WELCOME TO EMMA LANE

This modern-style community sits central within York, Pennsylvania and is just minutes from Rt. 30. This community is newly constructed and comes with clean, modern amenities. The Homes at Emma Lane features 16, 2-story apartments for lease which include a 1-car garage, 3 beds, 2.5 baths, and a laundry room, granite countertops, an oversized-kitchen with an open concept, as well as board and batten siding, and a quaint front porch. 4 units include a basement.

SCHOOLS

- Central York School District
- Hayshire Elementary School
- Central York Middle School
- Central York High School

DIRECTIONS

From US-30, turn onto N Sherman Street, then left onto Church Street. Continue onto Church Street until you see Emma Lane and the community will be straight ahead.

PRICE
\$1,895
\$2,195 w/ basement

STYLE
Duplex

SQ. FT.
1,654
2,667 w/ basement

PROPERTY
3 beds, 2.5 baths

CONTACT

INCH & CO.
PROPERTY MANAGEMENT

adminpm@inchandco.com
717.848.1579
inchpropertymanagement.com



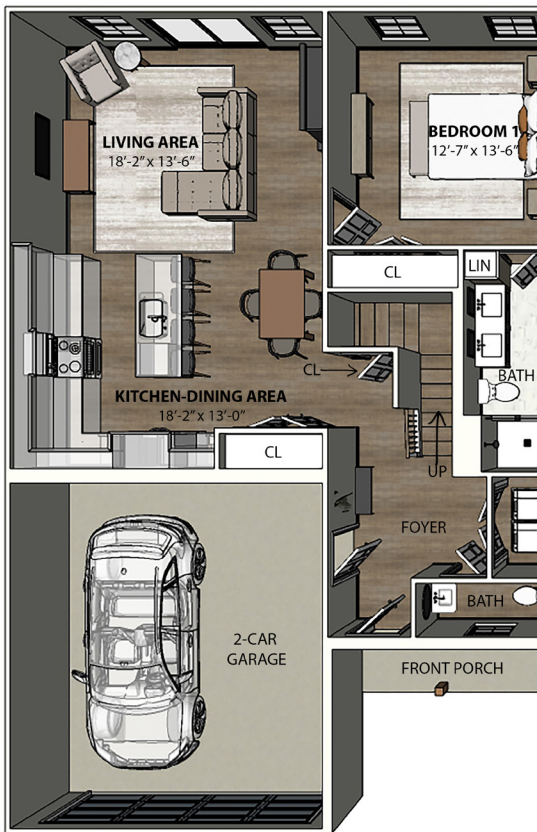
EMMA LANE
H • O • M • E • S



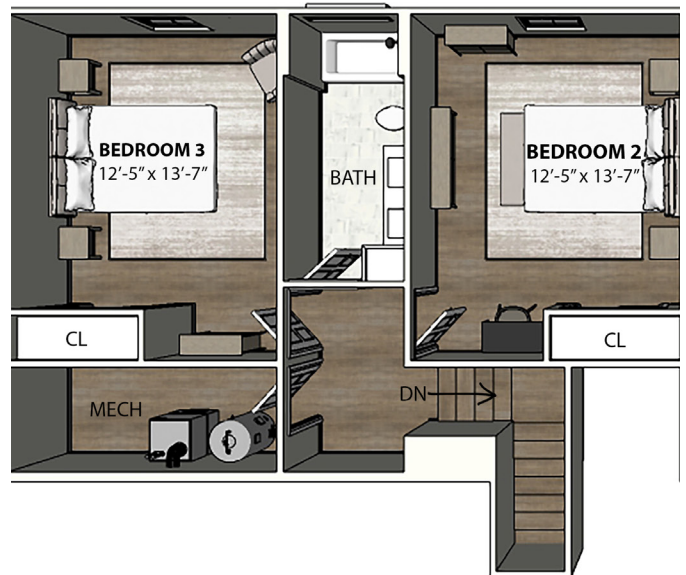


EMMA LANE

H · O · M · E · S



FIRST FLOOR

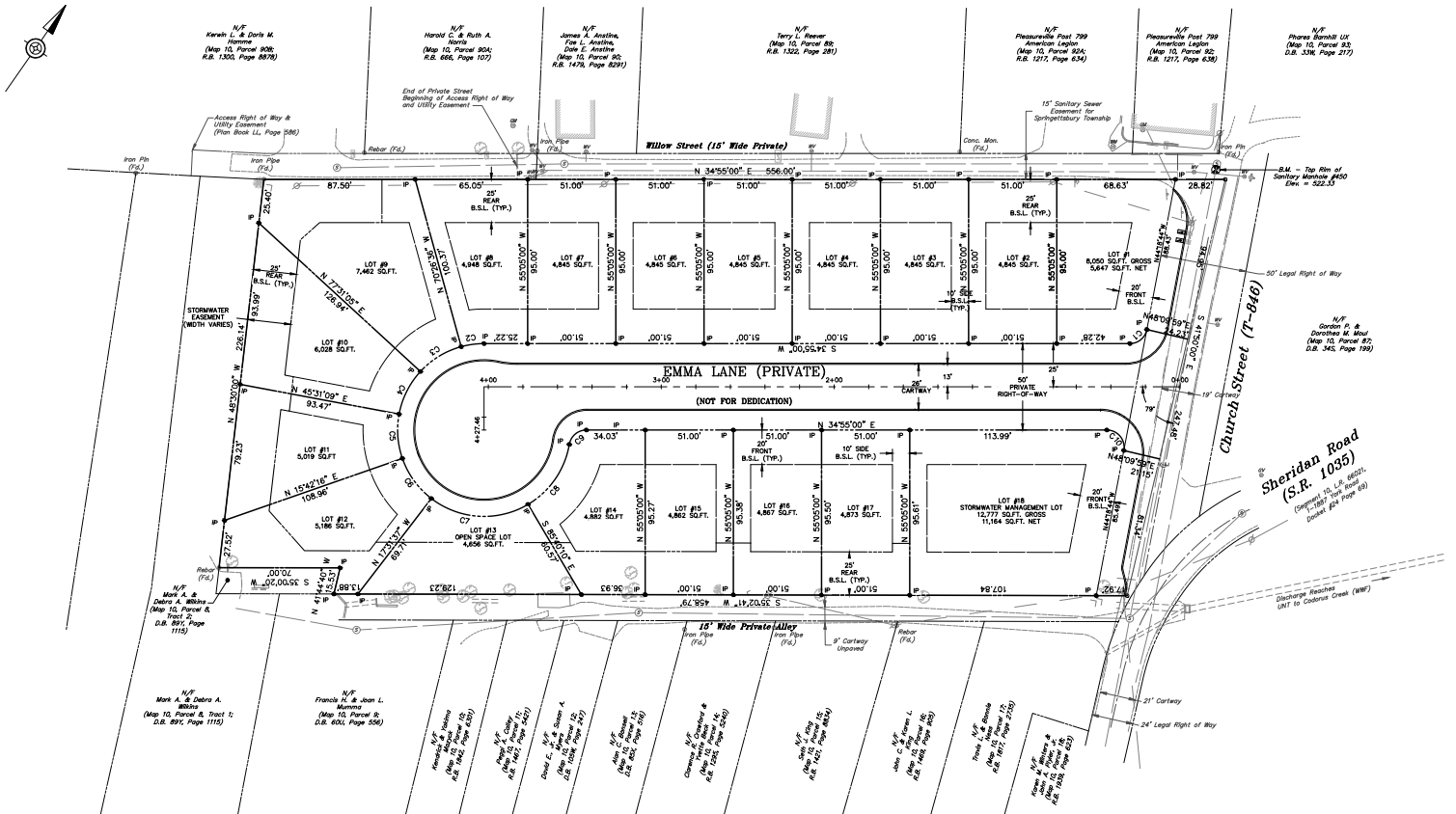


SECOND FLOOR



EMMA LANE

H · O · M · E · S



LOT PLANS