



# THE MAINSTREAM

## SUNDAYS

WORSHIP IN PERSON  
9:30 & 11:00 AM

WORSHIP BY LIVESTREAM  
11:00 AM



Palm Sunday

SECOND QUARTER 2025



Ministry Fair



Making Paths



*From the Heart of  
Rev. LeAnn Hodges*

## TRAVELING THE ANCIENT PATH

Dear GPC Members and Friends,

Thus says the Lord: Stand at the crossroads and look, and ask for the ancient paths, where the good way lies; and walk in it, and find rest for your souls. But they said, "We will not walk in it." (Jeremiah 6:16)

God spoke these words to the people of Jerusalem as the enemy was at the gate. It would be understandable for them to sharpen their blades for one last stand. But God offered them another way. Instead of charging into a fight that they could not win, God instructed them to stop everything and seek the path that God had laid out for them. Only then were they to move in the direction of God's leading, and on that ancient path they would finally find rest for their souls.

But they said, "We will not walk in it." That line haunts me. When we allow ourselves to be led by fear, we are unable to follow God forward in faith and it is difficult to be led in faith toward a future yet to be imagined.

It takes no faith to believe that the worst imaginable is inevitable. It DOES take faith to hold together the world as it is and as it could be and then make daily choices to move in the direction of God's beloved community.

That is what I think Jeremiah was talking about. When we stand at the crossroads, especially with much at stake, and ask to be shown God's way, that is when God is creating a way out of no way, for those who have eyes to see.

In my nearly two years as your transitional pastor, I have been inspired by your willingness to be faithful to God's timing. And I believe that we are finally beginning to see some glimpses of the path in front of us.

As you read the articles in this edition of the Mainstream, I invite you to look for ways in which you see God doing a new thing in our midst. In the context of the chaos, fear, and reactivity that is all around us, it is truly remarkable that this congregation is finding numerous ways to stay in a space of generous discernment and to respond with measured steps. I believe that this might be what it's like to stand at the crossroads, and that God is responding by showing us glimpses of the ancient path.

With Easter Hope,  
REV. LEANN HODGES  
TRANSITIONAL PASTOR

## WAYS TO CONNECT



[www.gpchurch.org](http://www.gpchurch.org)

301-948-9418

[office@gpchurch.org](mailto:office@gpchurch.org)

[@gpchurch\\_moco](https://www.instagram.com/gpchurch_moco)

# EQUIPPING DISCIPLES

Eastertide, as a general rule, we get to enjoy full spring and renewed life—trees and flowers are blooming, birds are twittering, it's warmer, and, on balance, life just feels more hopeful. I'm going to challenge all of us during this Eastertide to disconnect from the *Sturm und Drang* (Storm and Stress) of the constant news cycle for at least an hour each and every day. Go out, get some fresh air, take a little walk, let the beauty of the world really settle into your spirit, and thank God for all of your many blessings.



Looking ahead, Vacation Bible School is right on the horizon—Monday–Friday, July 14–18, from 9:00 a.m. to Noon. Children 4 years old through rising 5th Graders are welcome. Our theme this year is our “Faith Family Forest.” We will use the metaphor of trees and the forest to explore the family of God and how we are all part of that family. We’ll study five of the Old Testament patriarchs and matriarchs to discover how their faith and lives influence us today. We will use natural science to talk about relationships between God and people—people amongst themselves and people with the natural world. We will also see how God reuses patterns over and over in all of creation. To register, go to the website or [click here](#).

## VBS Volunteers Are Needed!

Adult and teen volunteers are needed from 8:45 a.m. to 12:15 p.m. each day. They will receive a 1-hour training. This is a wonderful time to connect with kids, make some new friends, or spend quality time with some that you already have. You can never get too much Godly Play!

**Spring Programming Ends**  
June 15

**Summer Program**  
(One-Room Schoolhouse)  
Room 32/33  
July 13 – August 24

**Fall Programming Begins**  
September 7

—CAROLYN HAYES  
DIRECTOR OF CHILDREN  
AND YOUNG FAMILIES



## Adult Ed Offerings

### SUNDAY MORNING

8:15 – Small Group  
*Between the World and Me* by  
Ta-Nehisi Coates, hybrid, Room 33

9:30 – The Present Word  
Spring Curriculum, hybrid, Room 206

9:30 – The Bible as a Whole  
Feasting on the Word, in person, Room 205

9:30 – Christian Classics  
considering next steps, hybrid, Room 202

### WEDNESDAY EVENING

7:30 – Frederick Small Group  
finishing the Lenten Study – Zoom



## SAVE THE DATE!

### GPC's Fireworks Picnic

Saturday, June 28, 5:00–8:00 pm  
Lindsay Hall



# YOUTH HAPPENINGS



**THANK YOU** to all who supported the Muffin Mania fundraiser! The VIPs are always supportive of our youth, and we thank you! Monies raised will go towards our summer camp expenses.



**JOIN US ON JUNE 8 FOR YOUTH SUNDAY!** Our students have put together full worship services for both 9:30 and 11:00 a.m. There is a lot to celebrate—graduations of seniors, confirmation students, and youth baptisms. Wear red and help us to celebrate!



*Confirmation students in class learning about the Holy Spirit*



**CONGRATULATIONS** to the following grads! Charles Che (Gaithersburg HS), Aaron Tchouambou (Northwest HS) and Max Young (Seneca Valley HS). If you are a high school or college senior graduating this year, please send your full name, school, and your degree (if you are graduating from college) to [office@gpchurch.org](mailto:office@gpchurch.org). We will post this information in future mid-week emails! Congratulations on making it to this milestone!

Our Youth & College Ministry at GPC seeks to provide opportunities for our middle school, high school, and college students to **KNOW** one another, **SHOW** God's love to others through service, and **GROW** together with God at the center.

—CARRIE LARSEN  
DIRECTOR OF YOUTH  
AND YOUNG ADULTS



## RED CROSS BLOOD DRIVE

*Returns to GPC!*



**American Red Cross** | Blood Services

The Blood Drive is scheduled for Tuesday, June 17, 1:00–6:00 p.m. in Lindsay Hall. Watch for posters around the church.

Online sign-ups will be available soon at Red Cross Blood Donation ([www.redcrossblood.org](http://www.redcrossblood.org)). For members who need computer assistance signing up, we are hoping that some volunteers will be available in Lindsay Hall and the Gathering Place in the weeks leading up to the Blood Drive.

We'll also need people to cover welcome stations and do other valuable tasks to help keep things running smoothly. If you are interested in helping that day, let a Congressional Life member know or contact Laurie Wallace-Lanham at [office@gpchurch.com](mailto:office@gpchurch.com).

Before Covid struck, GPC's quarterly Blood Drives were a big success. The Red Cross representative told us that GPC had more participants than many other locations in our area. We hope to bring back the high level of participation that we once had!

*Summit Hall Elementary Welcomes Your Donations!*

Parents are always grateful for gently used adult clothing and hand-me-downs for children, as well as other small items. Even though school will soon be out for the summer, parents and their children will continue to stop by the school during the next few months for assistance and counseling.

—MARILYN MORRISON







# OUR ORGAN NEEDS REPAIR . . .

## Help Us Strike the Right Chord!

Next to inspiring sermons, one of the most memorable parts of a worship service is the music! Often the heart of that music comes from a church's pipe organ. For quite some time, GPC's organ has needed to have several parts repaired. The good news is that with Session-approved funds and your help, we can restore our organ to better than when it was new and enjoy its music for many more years! Director of Music Katherine Williams provides the details.

After a long and extensive process, GPC has engaged David Storey, Inc. to repair our organ. He is familiar with the instrument and gave us the best price on repair. The Session approved funds for part of the repair with funds that were already in the budget for the organ and in the Vital Worship Ministry discretionary funds.

Unfortunately, there are several issues with the organ. The most obvious is that many of the notes on the "Great" (the primary division of an organ that an organist plays manually and is often considered to provide its foundational sound) do not make any sounds. There are 40 dead notes on that manual. That means when the organist plays the key, no sound comes out. Because there are so many dead notes, it affects the sound in many aspects—it will be uneven in various octaves and with different couplings. It's a major problem. In an organ of this age, what happens is that the rubber gaskets on the pouch board (the board within an organ that holds pouch-like leather bags that control the airflow into each pipe) have hardened and shrunk and lost their ability to seal. This allows air to escape instead of going into the pipe. The leather pouches have also neared the end of their expected life span, so they will be replaced, as well.

David Storey submitted a proposal that is in two parts.

**Part 1:** Beginning in May, he will remove the 16 pouch boards from the Great windchest and ship them to Schantz (the manufacturer of the organ). While there, the leather pouches and gaskets will be replaced. Once Schantz has completed the work and returned them to Storey, he will put them back into the organ. Then he will do the same thing with the pouch boards for the "Swell" (an enclosed box space in an organ with adjustable shades that open to allow pipe sounds to flow freely to the room)—remove them and send them out for refurbishment. This process should take until the end of August, depending on Schantz's schedule. The Session has already approved the funds for this portion

of the repair, which amounts to **\$16,250**. Once this work begins, the organ will be completely unplayable until all of the pouch boards have been reinstalled.



**Part 2:** This second part is not covered by funds already in the budget. **It is this portion for which we are holding a fundraising campaign—"Help Us Strike the Right Chord!"—through June.** This part of the project includes repairing actual pipes that have already collapsed or are in danger of collapsing. When a pipe is loose or misshapen, it will, at the very

least, affect the tuning or there will be no sound at all when played. A description of the work that Storey proposes follows.

- Removal of notes 1–4 of the 16' Principal pipes. These pipes have a slip joint in the body enabling them to be taken apart and removed from the organ without dismantling the casework. The main body of the pipe will be left in place and the mitered section (a part of a pipe folded back on itself to reduce the length) will be shipped to Schantz for replacement. While the pipes are out of the organ, additional racking will be installed to secure pipes in place and prevent them from collapsing again.
- Removal of notes 1–10 of the 16' Reed pipes. These pipes (which produce sound through a vibrating reed) are small enough that they may be completely dismantled and removed from the organ with little complication. They will be shipped to Schantz for repair and reconstruction. While the pipes are out of the organ, additional racking will be installed to secure the pipes in place and keep them from collapsing in the future.

The total cost, including onsite labor, shipping, and subcontract labor, is **\$27,400**.



## Help Us Strike the Right Chord!

There are no funds in the budget for this portion of the refurbishment. The organ will be playable if we replace only the pouch boards, which has already been approved but, eventually gravity will take hold of those large pipes, and they will collapse. So, the work will need to happen at some point. If the entire scope of the work is done now, the organ will basically be in its original condition (if not better because of improved scaffold supports) and it will be good to go for another 40 years!

The fundraising team would like you to “Help Us Strike the Right Chord” by making a financial contribution to fully restore the GPC organ. A donation of any size will be gratefully accepted and will bring us further to reaching our **\$27,400** goal. Donations may be made by check with “Organ Repair” written in the memo line and either mailed to GPC or placed in the offering plate. You may also contribute online through the Give portion of the GPC website or the GPC App on your phone. What a privilege to be a part of bringing more beautiful and inspirational music to our ears!

—KATHERINE WILLIAMS  
DIRECTOR OF MUSIC

### WE WELCOME OUR NEW STAFF MEMBERS!

GPC is happy to welcome two new staff members: David Bartley, Accounting Manager (left) and Jason Szymkowiak, Facilities Manager (right). Both men started working at GPC in April.



### THANK YOU TO OUR NEW CHURCH OFFICERS!



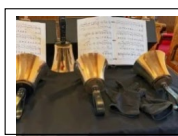
Nancy Sanders  
Trustee  
Class of 2026



Katherine Aller  
Trustee  
Class of 2027



Alex Parker  
Session Member  
Class of 2026



### HANDBELL CONCERT AT GPC!

Canterbury Ringers & Good Shepherd Ringers

Sunday, June 1, 6:00 PM  
GPC Sanctuary

### ORCHESTRA CONCERT AT GPC!

The Montgomery Philharmonic will hold the final concert of this season on **Sunday, June 8, at 6:30 p.m.** in our Sanctuary. The program will include *Suite for Strings* – Andrew John Kosinski (the orchestra’s conducting fellow), *Grand Canyon Suite* – Ferde Grofé, and *Dances in the Canebreaks* – Florence B. Price. Admission is free but donations are gratefully accepted.

The orchestra will again offer six Summer Reading Sessions to musicians who feel that they can play orchestral music and are good sight-readers. The sessions will be held on Monday nights in June, July, and August. You do not have to attend GPC to take advantage of this opportunity. For details, go to [www.montgomeryphilharmonic.org](http://www.montgomeryphilharmonic.org).





# ENGAGING WITH GPC . . . WORSHIP SERVICES!



How can you experience the rewards of service fellowship while further engaging with your GPC family? Read on.

Our 1st Quarter Mainstream focused on just some of the tasks and volunteers it takes to hold a GPC worship service . . . the Vital Worship

Ministry, Welcome Desk Greeters, Ushers, coordinating Sanctuary flowers, Music, Sanctuary preparation, and Communion. ([Click here](#) and scroll down to see the article on pp. 4-5 or go to the *Mainstream* navigation bar on the GPC website homepage.) But there's even more volunteering that adds to a positive Sunday worship experience.

**Lay Worship Leaders:** It is Elder Kris Maldarelli's responsibility to recruit Lay Worship Leaders for all worship services and she provides the training for this important service. What are the duties of the Lay Worship Leader? They lead the call to worship, opening prayers, responsive readings, and scripture passage prior to the sermon, and may read other portions, such as receiving the offering, as requested by the pastor. Kris is also researching ways to include online participants as lay leaders.

**Nursery Volunteers:** You can't miss Malvin Duncan in his colorful Hawaiian-style shirts as he cares for our youngest in the GPC Nursery during services. While we do have other wonderful Nursery volunteers, we can certainly use more. Carolyn Hayes is the contact for this position. A background check is required, but she says it is all online and very painless.



**Children & Youth Sunday School Volunteers:** Carolyn Hayes and Carrie Larsen lead these programs. Carolyn needs more Sunday School teachers. She says, "If you love the Lord and kids, this teaching opportunity might be right for you." Carolyn is looking for folks who can commit to one Sunday a month during the 11:00 a.m. service (it doesn't have to be the same Sunday every

month). These volunteers should be GPC members or in the process of becoming members. This position also requires an online background check.

Your presence could also make a difference in the faith building of our Youth Group members. Carrie would love to have volunteers both for Wednesday evening gatherings (7:00 to 8:30 p.m.) and/or one Sunday a month during the 11:00 a.m. service.

**The Caring Card Ministry:** Reverend Deb Vaughn coordinates this ministry, but GPC member Sandy McCoy has dedicatedly kept it flourishing over many years. She has been joined by Sandy Newcomb, and together they make a great team. The card-signing table is available at the doorway to Lindsay Hall. Duties include working together on caring card lists sent by Deb, setting out the cards, preparing a prayer list for the table, and returning signed cards to Deb's office at the end of the 12:00 coffee hour.



**Coffee Hour Volunteers:** Under the organized and cheerful leadership of Nancy Sanders, being a volunteer during church coffee hours is not only a much-appreciated service, but also a fun way to make church friends. Hairnets (or you can BYO hat), plastic gloves, and aprons are provided for you. If you want to help after the 9:30 or 11:00 a.m. services, you'll need to leave the Sanctuary during the last hymn. Your duties may include plating the food and keeping the tables well stocked, as well as washing up utensils, mugs, and plates, and filling the dishwasher afterwards.

## GPC Landscape Projects:

Another way to make new friends—Spring Cleanup—is an outdoor group effort that takes place prior to Easter and is coordinated by members of the Buildings and Grounds and Creation Care committees. You are asked to help with

trimming, raking, and generally beautifying our grounds. Creation Care also coordinates planting days, usually in May and September or October. Upkeep is needed throughout the year. Lisa Whitehead has been spotted watering planted areas, but others are needed to keep those plantings healthy. Please contact Larry Masselink or Lisa Whitehead to become a green volunteer!



# ENGAGING WITH GPC (cont'd)

**Litter Pick-Up and Extra Plantings:** Sometimes folks see a need and quietly volunteer to fill it. That was the case with Marilyn Morrison and her husband, Stuart; Donna Dannels; and Sue Eisenhower. Marilyn was distressed by the quantity of litter she saw at GPC near the bus stop on the south side of our property. Now, anytime they are near the church during the week, she and Stuart have added litter pick-up to their volunteer to-do list! Marilyn also provides plants for the large planters at GPC's north entrance and tends to them faithfully. Donna and Sue were disturbed by a lack of plants and dead plants leading

into our south entrance. They purchased ferns for the right side of the sidewalk into the church and Donna shared several of her own plantings to go in front of the playground fence facing the parking lot. Maybe more of us can keep our eyes on the grounds! These good deeds certainly make the church look more inviting on Sunday mornings and throughout the week!

—LUCILLE BAUR, CHAIR  
COMMUNICATIONS COMMITTEE

## WHAT'S NEW WITH THE CONGREGATIONAL LIFE MINISTRY?

The Congregational Life Ministry consists of many distinct parts, such as the Men's Breakfast Group, the Library Committee, CWF, CMF, VIPS, and Creation Care. Each group is committed to providing fellowship and service to the congregants of GPC.

With the recently formed Creation Care Committee joining Congregational Life, the ministry has become more focused on being better stewards of the Earth. This has evolved into certain new practices in the kitchen when serving food at coffee hours, churchwide gatherings, funeral receptions, etc. We welcome your participation in implementing the practices listed below.

WE USE	WE AVOID USING
Reusable Dishware & Bamboo Plates	Paper Plates
Ceramic Mugs, Bamboo Cups, Glasses, Children's Reusable Glasses	Paper Cups
Reusable Servingware & Utensils	Disposable Servingware & Utensils
Reusable Tablecloths	Disposable Table Coverings
Separate Garbage/Recycling/Composting Bins	Only Trash Bins

Congregational Life thanks everyone for your help and support of these efforts! In addition, your generous donations of food and time to the church kitchen are greatly appreciated!

—NANCY SANDERS  
CONGREGATIONAL LIFE



# GPC SPANS *the GLOBE*

## THAILAND

GPC benefits from and takes pride in the international diversity of its members. These quarterly articles are written by our internationally born members to share some of their home-country cultures and traditions, along with photos of the author and the featured country. We hope that these new, continuing articles in *The Mainstream* will help us build even stronger understanding and connections.

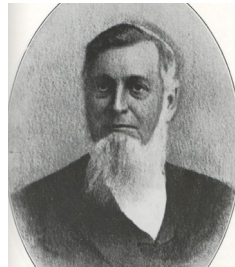
### Thailand Today

Thailand is a country in Southeast Asia known for its amazing cuisine, beautiful temples, tropical climate, vibrant nightlife, and world-class beaches. The country is predominantly Buddhist, with Christianity accounting for only slightly more than one percent of the population of approximately 70 million. American Presbyterians positively contributed to the development of Protestantism in the region.

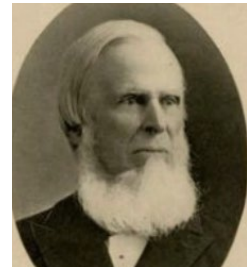
### History of Presbyterianism in Thailand

Presbyterianism in Thailand goes back to the early part of the 19th century, soon after the formalization of the relationship between the country and the United States. The Treaty of Amity and Commerce Between His Majesty the Magnificent King of Siam and the United States was signed in 1833. As noted on the website of the embassy in Bangkok, Thailand is “truly our oldest friend in the region” as this was the first treaty between the United States and an Asian nation. Siam was the official name of Thailand at the time. The country adopted the name “Thailand” many years later. The word “Thai” means freedom or freemen.

The American Presbyterian Mission (APM) in Thailand was founded in 1840 by the Board of Foreign Missions, a predecessor organization to today’s Presbyterian Mission Agency. One of the early Presbyterian missionaries to arrive was Rev. Stephen Mattoon, who received a call to the Kingdom of Siam while he was still a student at the Princeton Theological Seminary. He was ordained in 1846 and commissioned by the Board for a Mission in Siam with his wife, Mary, and Dr. Samuel House, a medical doctor.



Rev. Stephen Mattoon



Dr. Samuel House

The Mattoons arrived in Bangkok in 1847, after a nearly eight-month journey, which included stops in Macao and Singapore. Much of that time was spent awaiting ships that would get them closer and eventually to Thailand, which is halfway around the world. At that time, Bangkok was also known as the “Venice of the East,” with much of local transportation occurring via interior canals and rivers, and floating houses lining the waterways. The Mattoons initially lived in one of the floating houses and enjoyed the convenience of access to the site near the river where they built their early compound.

The First Presbyterian Church of Siam was established in 1849. Within eight days, the church received its first new member by certificate. The earliest known baptism occurred two years later when a staff member of the Mattoons was received into membership. The church moved to a permanent location in 1860. The APM’s early mission work included distribution of publications, operating a dispensary (run by Dr. House), teaching English, and establishing and running a boarding school. By 1878, the Presbytery of Siam was organized. In the following few decades, mission stations started to open in northern and southern provinces, hundreds of miles from Bangkok.





By the early 20th century, the APM had attracted thousands of converts and Thai leadership began to emerge. Notably, among the early influential Thai leaders, was Rev. Boon Tuan Boo-Itt, who had accompanied the retiring Dr. House to the United States for education and returned to plant his own church. Thai lay leaders and ministers started a movement to form an independent and indigenous church. In 1934, the Church of Christ in Siam, known today as Church of Christ in Thailand (CCT), was formed with mostly Presbyterian and some Baptist influences. CCT's founding principles included emphases on self-determination and self-governance.

After the Second World War and due to the shifting focus of the Board of Foreign Missions, the APM dissolved in 1957 and integrated its mission into CCT. CCT took full control of the then-existing mission. Support by the Board remained through "fraternal workers" instead of "missionaries." Today, CCT is an independent, self-sustaining organization, with 130,000 members, representing 550 congregations. It is just one of many Christian churches in Thailand. Interestingly, in 1958, the Board of Foreign Missions underwent its own transformation and became the Commission on Ecumenical Mission and Relations (COEMAR) following the merger of the United Presbyterian Church of North America and the Presbyterian Church in the United States of America. The word "ecumenical," which means unification and togetherness, was chosen because the previous name "belongs to an era long gone" and "the word 'foreign' connotes separation among the nations and fails to take into account the emergence of one world."

### Modern Day Thailand

Much has changed in Bangkok since the arrival of the APM. Like many modern big cities, local transportation is largely by cars, buses, rails, motorcycles, rideshares, and subway. One can still find a few floating houses and visit tourist attractions known as floating markets. While it may be difficult to imagine the sight that

greeted early APM missionaries, a visitor to Thailand can still find the church that the Mattoons planted, now known as the First Presbyterian Church of Samray (a two-minute tour, with Thai narration, may be found at <https://www.youtube.com/watch?v=QeJW7rabm2Q>).



First Presbyterian Church of Samray circa 1800s

### Author's Closing Thoughts

Although I was born in New Jersey, it was truly a blessing to have spent part of my formative years in northern Thailand, with many friends and teachers in the Thai Christian communities. I was introduced to what I have come to know of the grace and love of Jesus Christ early on. I did not become a Christian until many years later, long after my return to the United States, but my early exposure to Christianity in Thailand was truly foundational to my belief today. In writing this article, I am also reminded that while churches continue to evolve, in our own congregation and elsewhere, we all ultimately belong to one Church and share common belief ("For in the one Spirit we were all baptized in one body . . . and were all made to drink of one Spirit" – 1 Corinthians 12:13). As the Heidelberg Catechism puts it succinctly: "I believe in the Holy Spirit, the holy catholic church, the communion of saints, the forgiveness of sins, the resurrection of the body, and the life everlasting. Amen."

For a bibliography of sources consulted for this article, [click here](#).

—VINAI VINLANDER



*After attending worship and studying the Bible for many years, Vinai was baptized in a PC(USA) church while living in Saint Paul, Minnesota. He was ordained as a ruling elder in 2020 and served as commissioner to the Presbytery of the Twin Cities Area.*

*Following his relocation to the DC area, Vinai was drawn to GPC by the diversity of its membership and opportunities for Bible study. He became a member in 2024 and is an active participant in The Present Word, which meets on Sunday morning.*

*Vinai; his wife, Anne; and their two children, Jasmine and James, reside in Silver Spring, Maryland.*

IF YOU WOULD LIKE TO CONTRIBUTE AN ARTICLE ABOUT YOUR HOME COUNTRY,  
CONTACT PETER FOFUH AT [OFFICE@GPCHURCH.ORG](mailto:OFFICE@GPCHURCH.ORG).



## MEN'S BREAKFAST GROUP

FIRST SATURDAY | 8:00 AM | CAFÉ SOPHIE



In **April**, Lisa Whitehead spoke about Montgomery County's Climate Change Initiatives, and in **May**, Michael and Clara Pratt tried to answer the question "I've Taken All These Pictures, Now What?" As in previous summers, the group will meet at Café Sophie in the Gaithersburg Airpark. Summer dates are **June 7, July 5, and August 2**. No program, just breakfast, fellowship, and prayer. Each person pays for his or her own breakfast. All men and women are welcome. For more information, call the church office.

With the recent passing of Ted Farrand, we would like to acknowledge with gratitude his many contributions over the years as co-chair and chair of the Men's Breakfast Group. He arranged for speakers and coordinated the details for their monthly meetings and was instrumental in helping organize the annual Shrove Tuesday Pancake Supper.



## VERY IMPORTANT PRESBYTERIAN SENIORS {VIPS}

FIRST THURSDAY | 11:30 AM | LINDSAY HALL

A highlight for GPC seniors this spring was leading both church services on Older Adult Sunday. More than 20 individuals from the church participated in the **May 18** services.

At our **June 5** meeting, we will continue our theme of Moving Forward Following Retirement. Our speaker will be Dr. Sandy Newcomb, retired University of Maryland Professor of Education in Early Intervention for Children with Visual Impairment aged 0-4. Because of Sandy's passion for these children and their families, she continues to work with them, but now, as a retiree, she has more control of her scheduling.

The **4th of July** party will be held on Saturday, July 5, from 4:00 to 7:00 p.m. at the Asbury Villas Clubhouse. The party will include a potluck lunch as well as music and games with a patriotic theme.

As is our custom, there will be **NO meeting in August**. Our regular monthly Porch Angel Ministry deliveries of treats to any GPC seniors confined to their homes will continue through August, however.

For more information, contact Nancy Sanders (*call the church office*).



## CAREGIVERS SUPPORT GROUP

SECOND SATURDAY | 10:00 AM – NOON | ROOM 30/31

This group is for GPC members and friends who are caring for loved ones with mental illness. Upcoming meetings will be held on **June 14, July 12, and August 9**. Questions? Contact Cathy Lyon (*call the church office*).



## CRAFT GROUP

FIRST SUNDAY | 12:15 PM | LINDSAY HALL

The group continues knitting and crocheting to support requests. They have been asked to knit or crochet hats for the Prison Ministry in addition to prayer shawls and prayer squares by local service organizations. New organizations include Ingleside at King Farm, Sunrise Senior Living, and Adventist Shady Grove Hospital. We continue to support Holy Cross Hospital, The Equity Center, and JSSA (Jewish Social Services Agency). You can help too—just let Barbara know! Any pattern is fine, and yarn and patterns are available, if you need them. Prayer squares are 4"x4" so that a prayer card can be attached. Donations must be washed and placed in a plastic bag. Arrangements for pick-up can be made, if needed. Upcoming meetings will be on **June 7, July 13\*, August 3, and September 7**. Questions? Contact Barbara Clark (*call the church office*).

\*The July meeting will be held on the second Sunday of the month due to the July 4 holiday weekend.





## CUB SCOUTS

TUESDAYS | 7:00–8:00 PM | LINDSAY HALL & DOWNSTAIRS CLASSROOMS

Cub Scout Pack 64 has had a busy spring. April brought the **GPC clean-up day**. We had a good showing by the Lions and Webelos scouts. Our **spring hike** to Wheaton Regional Park was interesting and we observed some wildlife signs. Our May **camping trip** at the Sandy Spring Friends School Adventure Park included a campfire and scout activities. The **Bike Rodeo**, also in May, was held in the GPC parking lot. It was provided by the Montgomery County Recreation Department and the Gaithersburg Police Department, and a bike store provided maintenance services.

We're looking forward to the end-of-year **promotion ceremony**, the **Raingutter Regatta**, and our **annual planning picnic and play date**, all to be held in June. This year's **Summer Scout Day Camp** theme is Invention Convention. Two separate weeks of camp are available for scouts. It will be held at the Lois Green Izaak Walton League in Gaithersburg. Other summertime events for the pack include the **Frederick Keys baseball game** in July, **annual kickball game** and end-of-the-year **family picnic** in August.

If you are interested in joining our pack, we welcome both boys and girls from Kindergarten through 5th Grade. Inquiries can be sent to [cubscoutpack64md@gmail.com](mailto:cubscoutpack64md@gmail.com) or contact Barbara Clark (*call the church office*).

## REPAIRS TO COLUMBARIUM COMPLETED!

The Buildings and Grounds committee is pleased to announce that repairs which had closed the Columbarium in part of March and April were completed at the perfect time. On Easter Sunday, worshipers were invited to visit and take part in creating our traditional floral cross. The closure had been caused by a broken pipe under the fountain, which required removal of the paving stones so that plumbers could access the defective pipe.

Anyone is welcome to visit the Columbarium during GPC-staffed office hours, Monday through Thursday, 10:00 a.m. to 3:00 p.m. If you would like to arrange a visit at another time, please call the church office at 301-948-9418.

—LUCILLE BAUR  
COMMUNICATIONS COMMITTEE



## CMF UPDATE

The Christian Men's Fellowship continues to meet each Sunday at noon in a classroom off Lindsay Hall. Our regular group includes official GPC CMF members as well as non-members who enjoy the time of fellowship. We are currently engaged in a study of how biblical texts address contemporary issues and how they can inspire us—both individually and collectively—to better stewardship and discipleship. Our meetings are generally 45 minutes to an hour long, and all are invited to join us!

## CWF UPDATE

Members of the Christian Women Fellowship are busily preparing for the annual rally to be held September 26–28 in Texas. The theme this year is “Let Justice Roll.” During the rally, the CWF groups will have community outreach activities, retreat/leadership training, and a Bible quiz, and there will be a singing competition.



# THE NUTS AND BOLTS OF REOPENING THE GPC LIBRARY



The GPC Library was looked after for 50 years by volunteer Linda Hastings, who was also a librarian with various branches of the Montgomery County library system. (For more information about Linda and the history of the GPC Library, [click here](#) to scroll down to p. 9 of the August 2022 *Mainstream*.)

For the last several years since she retired, including during the pandemic, however, the Library has kind of taken care of itself.

Interest in our Library was rekindled with the formation of the Racial Justice Ministry and their desire to add books about social and racial justice to the Library.

Last fall, GPC's Library Committee was formed. It includes Norma Cary, Donna Gregory, Joy McIntyre, and Barb Thorne, all of whom are retired librarians. Barb is doing a great job of adding the new books to the catalog and updating it. Much work still needs to be done though.

Our first goal is to incorporate into GPC's inventory the books from the recently acquired Irene Coleman/Racial Justice Collection.

Another goal is to bring more attention to these new books. We are considering starting a reading program to encourage GPC members to explore the wealth of resources that are available to them. We have also

discussed having a program for adults and another one for younger children, depending on interest.

We are also thinking about having a work day to process and put covers on the books, make displays, and explain the reading programs.

Several GPC members are trained librarians, and we have reached out to them for their help. These include Sarah Mecklenburg and Merilee Worsey. We hope that they will be available to help during the hours that the Library will be open.

The Library is open for visitors when the church office is open (Monday–Thursday, 10:00 a.m.–3:00 p.m.). It is also open on Sunday mornings and committee members are available to answer questions between worship services and after the 11:00 service.

The next committee meeting will be on **Wednesday, December 3, at 10:30 a.m.** We plan to have the new books processed by that date. This will include putting stickers on all of the books in the Irene Coleman/Racial Justice Collection.

—THE LIBRARY COMMITTEE



(L–R: CRE Kris Maldarelli, Elder Carolyn Coleman, Rev. LeAnn Hodges, and Rev. Deb Vaughn)

## THE RACIAL JUSTICE COLLECTION

The Racial Justice Collection in our church library is open and ready for you to explore and learn!

Are you interested in books for children to learn about racism?

Are you interested in learning more about:

- Medgar Evers?
- Martin Luther King, Jr.?
- The Sugarland Ethno-History Project?
- Other anti-racist projects and heroes who have worked for racial justice and are still working for it?

Are you interested in learning more to equip yourself to work for racial justice?

Come explore the collection. You are bound to find something that will intrigue and surprise you.

The Racial Justice Ministry would like to challenge the members of GPC to check out and read an anti-racist book from the Collection this summer.

Remember to watch for our monthly “Drop-In Conversations” on a wide range of topics related to racism. The schedule is posted on the bulletin board across the hall from the Nursery. The topic of the June 1 and June 3 conversations is “Affirmative Action and Reverse Racism.”

—RACIAL JUSTICE MINISTRY



# CAN WE RELY ON CARBON OFFSETS?

Making travel plans for the spring and summer and looking to reduce your carbon footprint? Some people try to rely on carbon offset programs, but there are some significant concerns about their effectiveness. These programs offer travelers the opportunity to “neutralize” the carbon emissions from air travel by investing in projects like reforestation or renewable energy, but research has shown that many of these initiatives are poorly monitored and overestimate their benefits. As a result, some airlines are shifting away from these programs.

So what can we do instead? Obviously, one of the most effective things that we can do is to fly less because air travel is a significant contributor to carbon emissions. That might include taking a train, if it is possible. Additionally, choosing more efficient airlines, using direct flights, and flying economy rather than business or first class (since larger seats that fly fewer people require more energy per person) can all help decrease emissions.

Another effective approach that we can take is to focus on lifestyle changes that reduce the overall carbon footprint. Shifting to a more plant-based diet, for example, can lower personal emissions. Similarly, reducing energy consumption at home by utilizing renewable energy sources, improving insulation, and using energy-efficient appliances can all reduce emissions while saving money.

Finally, instead of relying on carbon offsets, we can invest our time and energy in local, tangible, environmental projects. We can also engage in community-based environmental conservation efforts, such as planting native trees or supporting local businesses that prioritize sustainable practices.

This is not to say that carbon offset programs are not worthwhile, but we shouldn't assume that they automatically reduce our carbon footprint. Instead, if we focus on reducing emissions ourselves and making sustainable lifestyle changes, we can have a greater and more immediate positive impact on the environment.

—CREATION CARE COMMITTEE



## GREENBRIER STATE PARK!

A summer camping trip is a wonderful opportunity to combine your love of camping and/or just spend time at the lake enjoying fellowship with other GPC families.

**Tent Camping will be August 15–17.** The Mosher, Choi, and Chen families have already reserved campsites C68, C69, and C70 in the Cedar Loop, which has electrical hookups and is pet friendly. Sites in this campground go quickly, so reserve yours now!

Greenbrier is also a great place to spend the day. **A Day-at-the-Lake** is on **Saturday, August 16.** The only “official” activity will be a potluck-style dinner. The rest of the time is for swimming, volleyball, boating, hiking, fishing, or sunbathing.

For information, email Fred Mosher at [alicefredannaalex@verizon.net](mailto:alicefredannaalex@verizon.net) or Kwang Choi at [khchoi3@verizen.net](mailto:khchoi3@verizen.net).

## NEED EMPLOYMENT?

GPC is restarting the Employment Support Group meetings. If you are looking for employment and would like to network with others in a supportive Christian environment to share concerns and job hunting tips, please plan to join us virtually on the 2nd and 4th Wednesdays at 7:00 p.m.

Upcoming meeting dates:  
**May 28, June 11 & 25, and July 9 & 23**

For more information about meetings, send an email to [office@gpchurch.org](mailto:office@gpchurch.org) or call GPC at 301-948-9418.

We hope that you can join us.





# CHRISTIAN SYMPATHY

*We mourn the loss of members and friends who have died.*

**Darlene Kunsman**

wife of Joe,  
in Gaithersburg, MD  
February 9, 2025

**Ted Farrand**

husband of Sue and father of Ashley,  
in Germantown, MD  
April 17, 2025

**Pam Carlson**

wife of Terry and  
mother of Carolyn and Mark,  
in Gaithersburg, MD  
February 24, 2025

**Kris Lyon**

son of Randy & Cathy Lyon  
and brother of Keith Lyon,  
in Rockville, MD  
April 19, 2025

**Kay Travis**

wife of John and  
mother of Sarah, Tom, and Ed,  
in Gaithersburg, MD  
March 31, 2025

*We extend our sympathy to the  
friends and family of the  
beloved GPP&K Teacher (15 years)  
and Director (10 years)*

**Gerry Wixson**

widower of Geni and  
father of Harriet, Fred & Robert,  
in Silver Spring, MD  
April 8, 2025

**Suzanne (Sue) Richardson**

in Derwood, MD  
April 26, 2025

*We extend our sympathy  
to the members of our  
congregation who have lost  
loved ones.*

**Terry Young**

his father, Terry Young,  
in Leechburg, PA  
February 7, 2025

**Sandy McCoy**

her mother, Gloria Fleming,  
in Olney, MD  
February 15, 2025

**Susie Linz**

her brother, John Sonneborn,  
in Ambler, PA  
March 2, 2025

**Sandy Menzies**

her mother, Linda Propst,  
in Grottoes, VA  
March 11, 2025



**WELCOME TO  
THE WORLD!**

*Congratulations to*

Claudio & Liane Ferreira,  
the proud grandparents, and  
Pedro & Carli Ferreira,  
the proud parents of  
**SEBASTIAN LOUIS FERREIRA**  
born on September 27, 2024

Paul & Lisa Whitehead,  
the proud grandparents, and  
David Whitehead & Dr. Aletheia Donald,  
the proud parents of  
**LORENZO WHITEHEAD**  
born in February 2025

## WE WELCOME NEW MEMBERS!

On Easter Sunday, April 20, we welcomed six new members to GPC. When you see them, be sure to introduce yourself and welcome them to our GPC family!



Isatu  
Kamara



Mercy  
Kumbatira



Tom  
Kumi



Bob  
Oliver



Bruce & Kathy  
Stephen





## SANCTUARY FLOWER ORDERS

### WANT TO DONATE FLOWERS *for Sunday worship service?*

You may give flowers in honor or memory of someone, or to celebrate a special occasion.

The weekly altar flowers cost \$50, and you may take them home after the 11:00 service.

Scan the QR code below to access the flower form or visit [gpchurch.org/flower-form](https://gpchurch.org/flower-form) to place your order.



## THE MAINSTREAM

### Distribution of Newsletters and Submission Deadlines for Articles

The Mainstream is published quarterly. It is sent electronically and hard copies are mailed in February, May, August, and November.

**Submissions should be sent  
to [jobermiller@gpchurch.org](mailto:jobermiller@gpchurch.org) and  
[bmoldroyd53@gmail.com](mailto:bmoldroyd53@gmail.com)  
by January 15, April 15,  
July 15, and October 15.**

Questions? Contact the church office.

## FINANCIAL SUMMARY REPORT

April 2025

% OF  
2025 YTD BUDGET

### INCOME

Envelope Pledged.....	\$249,389 .....	36%
Envelope Unpledged .....	\$69,306 .....	26%
Loose Offering .....	\$5,079 .....	25%
Other Income .....	\$345 .....	0%
Room Rent.....	\$0 .....	0%
Interest & Dividends .....	\$7,261 .....	33%
Manse Rental .....	\$14,200 .....	53%
Bequest Unpledged.....	\$0 .....	0%
Mizo Church Offering.....	\$0 .....	0%

Total.....\$345,580 .....33%

### EXPENSE

NCP Membership .....	\$7,134 .....	25%
Human Resources.....	\$167,415 .....	28%
Buildings & Grounds.....	\$73,024 .....	31%
Office Operations.....	\$12,940 .....	33%
Communications.....	\$1,391 .....	31%
Stewardship .....	\$(25).....	-1%
Comm Engagement .....	\$28,663 .....	30%
Eq Disciples.....	\$3,416 .....	19%
Vital Worship .....	\$6,128 .....	48%
Congregational Life .....	\$749 .....	23%
Other.....	\$0 .....	0%
Session .....	\$0 .....	0%

Total.....\$300,835 .....29%

NET .....\$44,745

To request a complete financial summary,  
email [accountingmanager@gpchurch.org](mailto:accountingmanager@gpchurch.org).



## GPC MEDIA POLICY

Gaithersburg Presbyterian Church (GPC) uses print and digital media of church life in communications materials to share the ministry of GPC with our congregation and community at large. GPC reserves the right to use any media taken at any activity sponsored by GPC, without the express written consent of those individuals included within the media. GPC may use any such media in publications, social media, and any website.



# *THE MAINSTREAM*

**Gaithersburg Presbyterian Church**

610 South Frederick Avenue

Gaithersburg, MD 20877-1297

*RETURN SERVICE REQUESTED*

NON-PROFIT U.S.  
ORGANIZATION  
U.S. POSTAGE  
**PAID**  
Suburban Maryland  
**PERMIT NO. 10005**



*PENTECOST SUNDAY IS JUNE 8!*



## *FIND IT FAST!*

- Vacation Bible School – July 14–18 (p. 2)
- GPC's Fireworks Picnic – June 28 (p. 2)
- Red Cross Blood Drive Returns to GPC (p. 3)
- Organ Repair Update and Fundraising (pp. 4–5)
- Our Two New Staff Members (p. 5)
- Our Three New Church Officers (p. 5)
- Handbell Concert – June 1 (p. 5)
- Montgomery Philharmonic Concert – June 8 (p. 5)
- Engaging With GPC – Part 2 (pp. 6–7)
- Congregational Life News (p. 7)
- GPC Spans the Globe (Feature Article) (pp. 8–9)
- Columbarium Repaired (p. 11)
- CMF and CWF Updates (p. 11)
- Reopening the GPC Library (p. 12)
- The Racial Justice Collection (p. 12)
- Greenbrier State Park Trip (p. 13)
- Employment Support Group (p. 13)
- New Members of GPC (p. 14)