



# THE MAINSTREAM

## SUNDAYS

WORSHIP IN PERSON  
9:30 & 11:00 AM

WORSHIP BY LIVESTREAM  
11:00 AM



FIRST QUARTER

2025



*From the Heart of  
Rev. LeAnn Hodges*

## IN THE MIDST OF CHAOS

Dear GPC Members and Friends,

In the beginning of Genesis, we read about the formless void that existed before God spoke all that is into being—often referred to as chaos, something with which we are well acquainted. I find it helpful to remember that God STILL hovers over the chaos, but something deep in me resists that awareness. I suspect it is because I still cling to the belief that we are responsible for bringing order to the chaos on our own.

Elder Shani McIlwain recently preached a powerful sermon, “The Arc of Justice Won’t Bend Itself.” I have been mulling this over in my heart recently, pondering and praying about what is mine to do. Doing nothing but expecting that all shall be made well is in no way consistent with the call of faith. And also, believing that everything is dependent upon what we make happen is problematic. The life of faith is not an either/or situation. It is an active partnership with the Divine and a lifelong exercise of discernment and trust.

The way that I have been framing this in my leadership as your transitional pastor is the difference between **managing** chaos and **leading through** chaos. Pastors have traditionally been trained as managers—to create order out of the “formless voids” of institutional life.

While that skill of managing “all the things” is indeed necessary, it becomes problematic when we consider that the pastor’s main job is intended to equip the community to engage with scripture in faithful ways.

Our job as disciples is not to tame the waters of chaos, but to cling to the one who will—to follow the path of Jesus, who came to show us how the transforming love of God still has the power to bring order out of chaos and life where we only see death. On my better days, I believe that God is still at work in ways that I cannot see, and that faith at such a time as this means that we keep showing up, clinging to the hope that Christ’s love surpasses our knowledge and is at work within us, able to accomplish abundantly far more than all we can ask or imagine.

May we lift up the sails of this sailboat church and trust in the winds of the Holy Spirit to take us where we and the world need us to go.

In Faith and Hope,  
REV. LEANN HODGES  
TRANSITIONAL PASTOR

## WAYS TO CONNECT

[www.gpchurch.org](http://www.gpchurch.org)

301-948-9418

[office@gpchurch.org](mailto:office@gpchurch.org)

[@gpchurch\\_moco](https://www.instagram.com/gpchurch_moco)



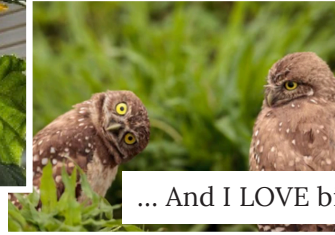
# EQUIPPING DISCIPLES



I LOVE my garden.



I LOVE flowers.



... And I LOVE birds and insects.



Well, spiders not so much. I respect them, but I don't have warm feelings toward them.

Last winter we bought a couple of suet feeders and for weeks we didn't get any birds. Then one day those little four-inch-square feeders had big old giant crows hanging off them! Apparently, they broke the log jam because after that lots of different sorts of birds came to feed, and the crows never came back.

This year we put the feeders up and, again, for weeks, nothing. Then one day, a little Downy Woodpecker showed up. The next day he brought a friend. And by the end of that day, we had a steady stream of tiny, little birds. I spoke with Katherine about them because I couldn't quite figure out what some of them were. She mentioned the bird feeder hierarchy . . . who knew there was such a thing? Well, I did look it up and discovered that all the birds that come to our feeder are those on the very bottom of the bird feeder hierarchy. All of our visitors are the teeny, tiny, timid little birds: Tufted Titmice, Carolina Chickadees, House Finches, Bluebirds, and Juncos. Watching them, I realized that there is still a kind of hierarchy, but this one is much kinder. The bigger of the tiny, little birds knock off some of the seeds while they are eating so that the smaller ones, who may be neither big, strong, nor brazen enough to get

at the seed lodged in the suet, can then go through and collect what has fallen on the porch and into the planters on our porch, kind of like gleanings. It may not be done on purpose, but it still works out well for everyone, including me, since there's very little leftover mess!

*Listening for the Heartbeat of God*, by J. Philip Newell, is a book about Celtic spirituality that some of us read to prepare our hearts for Christmas. An important aspect of Celtic spirituality is seeing God in everything . . . even birds at a bird feeder. There are hundreds of examples in nature where we see unexpected relationships. Who knew that plants had evolved such intricate and extensive communication skills and had relationships with other plants? Who knew how important the humble moss can be in an ecosystem? Octopuses are incredibly playful and they know and like some people very much, and others . . . not so much. Alex, the gray parrot, could count, knew shapes and colors and how to break words into phonemes, and had a very dry sense of humor, usually at his trainer's expense.

God created the universe out of love—to love and for love. We just need to slow down . . . to look for God in everything . . . and to try our best to love like Jesus taught us.

—CAROLYN HAYES  
DIRECTOR OF CHILDREN  
AND YOUNG FAMILIES



## Children's Offerings

Sunday School meets most Sundays after the Children's Message at the 11:00 worship service except for the first Sunday of each month (Communion Sunday) and some holiday weekends. We begin together in the Sanctuary and then, following the Children's Message, are excused. The younger children meet for Godly Play in Room 14 and children from 1st to 5th Grades meet in Room 11.







- Feb 12 – Ice Skating & Pizza | 7:00 p.m.
- Feb 23 – Confirmation Parent Meeting | 12:00 p.m.
- Mar 5 – Ash Wednesday Service | 7:00 p.m.
- Mar 26 – Parents Night Out Event | 6:30 p.m.
- Apr 24 – Kingdom Worker Bash | 7:00 p.m.

**GPC** Youth

Registration for High School Camp opens on February 23. Please see Carrie for details.

**JOIN US!**

**Sunday Mornings | 11:00 a.m.**  
**Wednesday Nights | 7:00–8:30 p.m.**

**GPC** College

- Join us for our monthly events! Mark your calendars!
- Feb 8 – Board Games & Bagels | 10:00 a.m.
  - Mar 14 – Dinner & Bonfire | 6:30 p.m.
  - Apr 5 – Hike @ Sugarloaf Mountain | 8:00 a.m.

Please contact Carrie for event-specific information.

Our Youth & College Ministry at GPC seeks to provide opportunities for our middle school, high school, and college students to **KNOW** one another, **SHOW** God's love to others through service, and **GROW** together with God at the center.





# ENGAGING WITH GPC ... WORSHIP SERVICES!

This year's issues of the Mainstream will feature a series of articles about volunteer opportunities (all kinds of ways to engage with GPC) and spotlight some of our current, dedicated GPC volunteers who consistently share their time and talents in large and small ways.

This article will focus on a few of those who volunteer to make our Sunday worship experience at GPC so fulfilling. Some of those good works are overseen by GPC ministries and committees, but others are taken on independently. There are always opportunities, both occasional and consistent, for you to add your volunteer support.



**Welcome Desk:** Members of the Communications committee—Paul Whitehead, Peter Fofuh, Francie Whitlock, and Lucille Baur—have been serving as occasional greeters as GPC has been providing and encouraging the use of name tags. This is an important position that needs to be filled on a regular basis. It only takes a short time commitment before and after services, but it is vital in helping members and especially guests have a personal connection point.

**Vital Worship Ministry Coordination:** This ministry works with our paid staff and takes the lead in coordinating many volunteers who work together to handle all the details of our services. The chair of the committee is Elder Kofi Kumi, whose duties cover overseeing all the aspects of our services. Just some of those responsibilities are Sanctuary set-up, ushers, flowers, and communion. Of course, we don't just hold in-person services; Elder Evi Melberg is the welcoming host of our livestream chat. She deftly assists our online worshipers throughout each service, always with the goal that they receive as much information and support as those attending in person.

begins. Ed also coordinates ordering our Sanctuary flowers, with Susie Linz stepping in to take the lead for our special Christmas poinsettias and Easter flowers. She can always use plenty of helpers to water the plants. Of course, everyone who orders Sunday flowers (learn how on the GPC website) contributes to the beauty of our services.

**Music:** After an uplifting sermon, nothing else quite elevates a service like music. We are very fortunate to have two highly experienced leaders of our Music Ministry: Katherine Williams, our full-time Director of Music, and Sandra Ragusa, our part-time Handbell Director. In addition, we are very grateful for Carol Anderson and Kris Maldarelli, who have made personal volunteer commitments to lead our children's Joy Ringers and Joy Chimes programs for many years. Whenever you are moved by a song from the Praise Team, you can thank volunteer Barbara Oldroyd. She thoughtfully makes selections, finds the music, and coordinates the rehearsals. Christian Women Fellowship (CWF) holds regular rehearsals for their dynamic music the first Sunday of the month. Members take turns leading the choir in worship. A huge thank you to the volunteer members of all our musical groups, both vocal and instrumental, for sharing their gifts with us. Each group would welcome more to its ranks, and no auditions are necessary.



**Ushers and Sanctuary Flowers:** The most visible worship service volunteers, of course, are the Ushers. We currently have a working pool of 15, with 6 needed for each service. They are coordinated by Usher Captain Ed Markley, who would certainly welcome more Usher volunteers. There is just a little bit of training, and all the duties can be easily reviewed from a written list. You only need to arrive 20 minutes before each service



Joy Ringers



GPC Musicians



**Sanctuary Preparation:** Did you know that the Buildings and Grounds committee coordinates with two volunteers, John Travis and Don Woodward, who come to church on Saturdays armed with yardsticks to adjust the Sanctuary rows of chairs to ensure proper placement and spacing? Could your skills measure up to help with that job?

Another task that can be done periodically is making sure that hymnals and Bibles are stowed in their proper places under the chairs. If you would like to help, ask a member of Vital Worship for details



**Communion:** The various aspects of serving Communion to the congregation are currently coordinated by Elder Steven J. Ward. With only a few volunteers once a month to help prepare the elements, we might be able to go back to our pre-Covid non-prepackaged bread and juice.

[Click here](#) to see the worship-service-related duties of many of our volunteers and GPC staff as compiled by the Vital Worship Ministry. The ministry always welcomes new members!

In our May issue, we'll feature more volunteer opportunities that contribute to making a difference in your Sunday morning experience. These include lay worship leaders, GPC landscape projects coordinated by Creation Care and Buildings and Grounds; Sunday morning litter pick-up; the Caring Card Ministry; and the Nursery, Sunday School, Sunday Youth Group, and Coffee Hour volunteers.

Your engaged and caring involvement transforms our congregation into a family. We hope that you'll be inspired to become an active family member of GPC. Call the church office to get connected with the proper contacts to learn more about a desired volunteer position!

—LUCILLE BAUR, CHAIR  
COMMUNICATIONS COMMITTEE

## UPDATE FROM THE PNC

The Pastor Nominating Committee has been busy reviewing candidate profiles and accompanying materials (sermon recordings, etc.). We're happy to report that we have conducted several informal Zoom interviews and are scheduling more formal second Zoom interviews with our collective favorites of these. We are also continuing to receive new candidate information.

We're excited for the future of GPC and committed to the faith that God has already chosen the person who is best equipped for this position and are prayerfully working to discern God's will. We appreciate your prayers.

—PASTOR NOMINATING COMMITTEE

## CONGRATULATIONS to Kris Maldarelli!

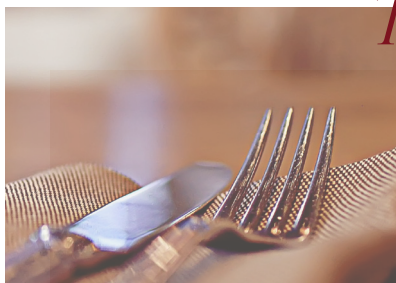


On January 23, Elder Kris Maldarelli, CRE, was commissioned at the National Capital Presbytery's meeting. Each time a Commissioned Ruling Elder serves a new church, the presbytery must commission them to that congregation.

The presbytery approved her commission in November, which allowed her to start her ministry at GPC, but the presbytery was required to formalize the relationship with a commissioning at a presbytery meeting.



## THERE'S ROOM at the Table for You!



Sign up for Table Fellowship as an individual, with a friend, or as a couple. This **new** program does not require everyone to host. As eight adults sign up, groups are created. After you participate in one group, you can sign up to be included in a different group. For questions or to be added to a group, contact Clara Pratt at [office@gpchurch.org](mailto:office@gpchurch.org).



## MEN'S BREAKFAST GROUP

FIRST SATURDAY | 8:00 AM | LINDSAY HALL

For the **January** program, Carol Anderson and David Mecklenburg shared photos and experiences from their recent trip to Antarctica and Patagonia. In **February**, Norm Gordon told us about the tutoring program at Germantown Global Connection. On **March 1**, Denise Schleckser will tell us about KindWorks. The speaker for the **April** meeting is still being confirmed. All men and women are welcome to join us for Christian fellowship, prayer, and a light continental breakfast. Questions? Contact Ted Farrand (*call the church office*).

---



## VERY IMPORTANT PRESBYTERIAN SENIORS {VIPS}

FIRST THURSDAY | 11:30 AM | LINDSAY HALL

VIPS is closing the month of February with a tour of the Sandy Spring Slave Museum on **February 25**. At the **March 6** meeting, we will welcome Elder Kris Maldarelli to share her message "Ways to Make the Most of One's Senior Years." Our newly formed GPC Library Committee—Barb Thorne, Joy McIntyre, Marna Cary, and Donna Gregory—will speak at our **April 3** meeting about their long-range goals and the progress already made on revitalizing our church Library. On **May 1**, retired Montgomery County Police Officer Tom D'Albora, will share some of the varied jobs and experiences he has encountered. On **Sunday, May 18**, seniors of the church will host our annual Older Adult Sunday worship services. On the same day, we will also sponsor our annual Muffin Mania to collect donations to support the summer activities of our GPC Youth Group! For more information, please contact Nancy Sanders (*call the church office*).

---



## CAREGIVERS SUPPORT GROUP

SECOND SATURDAY | 10:00 AM – NOON | ROOM 30/31

This group is for GPC members and friends who are caring for loved ones with mental illness. Upcoming meetings will be held on **March 8**, **April 12**, and **May 10**. Questions? Contact Cathy Lyon (*call the church office*).

---



## CRAFT GROUP

FIRST SUNDAY | 12:15 PM | LINDSAY HALL

The group continues knitting and crocheting to support requests. They have been asked to knit or crochet hats for the Prison Ministry in addition to prayer shawls and prayer squares by local service organizations. New organizations include Ingleside, Sunrise, and Adventist Shady Grove Hospital. We continue to support Holy Cross Hospital, The Equity Center, and JSSA (Jewish Social Services Agency). You can help too – just let Barbara know! Any pattern is fine, and yarn and patterns are available, if you need them. Prayer squares are 4"x4" so that a prayer card can be attached. Donations must be washed and placed in a plastic bag. Arrangements for pick-up can be made, if needed. The next three meetings will be on **March 2**, **April 6**, and **May 4**. Questions? Contact Barbara Clark (*call the church office*).

---



## CUB SCOUTS

TUESDAYS | 7:00–8:00 PM | LINDSAY HALL & DOWNSTAIRS CLASSROOMS

Cub Scout Pack 64 has had a busy winter! In **January** we had our Pinewood Derby. **February** brought Scout Sunday and our annual Blue & Gold Banquet. The theme this year was Pirates! Our 5th Grade Arrow of Light Scouts bridged to local Boy Scout Troops and other Scouts received awards at this event. **March** activities will include participation in Shrove Tuesday Pancake Supper and regular Den and Pack meetings. We're looking forward to our **spring** campout at Sandy Spring Adventure Park and **May** Bike Rodeo. Our pack is open to boys and girls entering Kindergarten through rising 5th Graders. If your child is interested in participating, contact Barbara Clark (*call the church office*).





# ASH WEDNESDAY AND HOLY WEEK SERVICES

<b>Ash Wednesday</b> <b>March 5</b>	7:00 PM	Communion Service In person & livestreamed
<b>Palm Sunday</b> <b>April 13</b>	9:30 & 11:00 AM	Worship Services In person & livestreamed*
<b>Maundy Thursday</b> <b>April 17</b>	7:00 PM	Worship Service In person & livestreamed
<b>Good Friday</b> <b>April 18</b>	12 NOON	Worship Service Good Shepherd Lutheran Church In person & livestreamed
<b>Easter Sunday</b> <b>April 20</b>	9:30 & 11:00 AM	Worship Services In person & livestreamed*



\*Livestreamed  
at 11:00 only.



## BE PART OF GPC'S NEW EMERGENCY ALERT SYSTEM!

GPC has developed a text messaging system that can provide emergency alerts. It was used for the first time on Saturday, January 18. Two alerts were sent due to the National Weather Service's prediction of snow and ice to occur in our area between 7:00 a.m. and 7:00 p.m. on January 19. For safety purposes, the decision was made to cancel in-person worship and to offer only an 11:00 a.m. online service. Did you receive the text alerts? You can only benefit from such notifications if we have your current cell phone number. If you haven't already provided it to GPC, please call Sue Goodyear, our Office Manager, at 301-948-9418 to give us that information. Our emergency message was delivered through several means, which is a best practice for alert notifications. But emergency planners believe that text messages should be a priority, as they are often the fastest way to reach people. In the event of any kind of church emergency, we want to make sure that we can reach you quickly!

—LUCILLE BAUR, CHAIR  
COMMUNICATIONS COMMITTEE



## SHROVE TUESDAY PANCAKE SUPPER

Bring your family, neighbors, and friends to **Lindsay Hall on March 4, from 5:00 to 7:00 p.m.** for pancakes and sausage. The cost is \$3 for adults and children ages 12 and up, \$2 for seniors, and \$1 for children under 12. \$10 maximum per family.

## ORCHESTRA CONCERTS AT GPC!

The Montgomery Philharmonic will hold the third concert of its 18th season in our Sanctuary on **Sunday, March 9, at 6:30 p.m.** The program will include *Huapango* – José Pablo Moncayo, *Bugler's Holiday* – Leroy Anderson, *The Deserted Garden for String Orchestra* – Florence Price, and *Symphony No. 5, Finale* – Peter Ilyich Tchaikovsky. Future concert dates are **April 27** and **June 8**. Admission is free but donations are gratefully accepted.



# CHRISTIAN WOMEN FELLOWSHIP

The Christian Women Fellowship (CWF) is pleased to share news of our group. Our CWF chapter was started in 2012. The organization has its roots within the Presbyterian Church of Cameroon (PCC), but it has spread through Africa and includes affiliates in the United States, Canada, and parts of Europe. We have longstanding ties to the Presbyterian Church USA (PC(USA)) and the Presbyterian Women (PW) PC(USA). GPC's CWF member Grace Atanga has served as a Co-Moderator of the PW in the National Capital Presbytery and is currently the CWF PC(USA) National President. In her leadership role, Grace publicly shared the mission of the CWF movement: "to spread the gospel of Christ through spiritual, social, and psychological transformation in the home, congregation, and society at large." Our current group president, Grace Ndjongo, also served as member of the Search Committee for the PW in the Synod of Mid-Atlantic. The CWF engages in ecumenical, evangelical, and educational activities, using a variety of skills on how to adapt and thrive in a fast-changing world."



Our GPC chapter of CWF welcomes all women and currently has 25 members. We meet each Sunday after the 11:00 a.m. worship service in Room 202 in Lindsay Hall for Bible study, fellowship, and singing. It is our joy to lead the congregation in song, typically the first Sunday of each month. We're also pleased to be able to add some male singers from our new GPC Christian Men's Fellowship (CMF) chapter. We carry out community outreach activities where we provide gifts to the homeless and visit the sick in our groups, church, and Africa. We also participate in annual rallies where we compose songs and present them during the rally. In the past year, we took gifts to CASA in Rockville, Maryland, and distributed them to 35 workers; we also distributed gifts to 50 women at the women's shelter in Rockville, as shown in the pictures below.

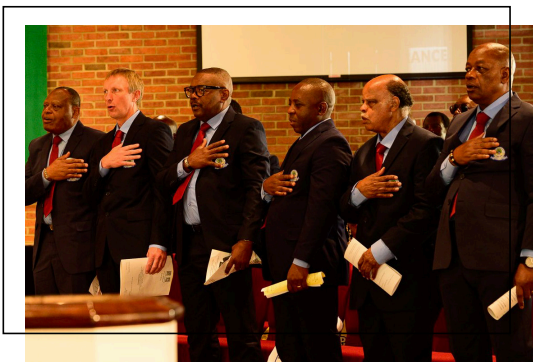


We look forward to sharing information about our upcoming activities.

CWF reminds us that "I can do all things through Him who strengthens me." —Philippians 4:13.

—GRACE NJONGO  
PRESIDENT, CWF

# CHRISTIAN MEN'S FELLOWSHIP



The Christian Men's Fellowship is an international movement committed to creating disciples. Although you may know our group for singing periodically during worship, the group's primary purpose is to strengthen our own faith walk, to create strong relationships in order to support and encourage one another, and to engage in outreach to others in the church and in our community. We meet every Sunday in Lindsay Hall at Noon for Bible study and fellowship. Our meetings generally last 45 minutes to an hour and we welcome anybody who would like to join us to learn more—no RSVP required!

—AARON CARUSO



# RJM REMEMBERS

## *and honors Irene Coleman*

On Sunday, February 23, the Racial Justice Ministry (RJM) will dedicate a collection of books donated by Carolyn Coleman in memory and honor of her mother, Irene, and also books that were donated by our congregation. The Colemans—Irene, Walter, and their two daughters, Roslyn and Carolyn—were the first

black family to attend GPC, opening the door for other people of color. Their legacy is a church that is truly open to anyone, as our congregation is made up of people from all over the world and of many different ethnicities. We give thanks for the faith of our beloved, longtime member Irene Coleman and her family and will celebrate the gift of books from Carolyn and from you.

One of the RJM's goals was to establish a racial justice section in the GPC Library. To that end, a GPC Lenten project last year was the donation of racial justice books and money for the RJM to purchase books on their list. The RJM received 70+ books (more than a third of which had belonged to Irene) along with financial donations! Thanks to all of you who helped make this happen. The RJM also would like to recognize the collaboration between the Library Committee and the RJM to make this happen.

You may still donate books but, more importantly, now you can check them out! Stop by the GPC Library on a Sunday morning to see the new additions or visit the Library's newly created website (go to [www.librarycat.org/lib/GPCLibrary](http://www.librarycat.org/lib/GPCLibrary)) to check the availability of specific books.

Watch for reminders of the RJM "Drop-in Conversations" being held in the Library at 9:30 a.m. on the first or second Sunday of each month.

RACIAL JUSTICE MINISTRY



## GET INVOLVED

# ADULT ED OFFERINGS

### Sunday Morning

- 8:15 – Small Group, hybrid, Room 32/33
- 9:30 – The Present Word, hybrid, Room 206
- 9:30 – Christian Classics, hybrid, Room 202
- 9:30 – The Bible as a Whole, in person, Room 205

### Wednesday Evening

- 7:30 – Bible Study, Google Meet
- 7:30 – Frederick Small Group, Zoom





# GPC SPANS *the GLOBE*

## THE DEMOCRATIC REPUBLIC OF THE CONGO

GPC benefits from and takes pride in the international diversity of its members. This is the fifth in a series of articles written by our internationally born members to share some of their home-country cultures and traditions, along with photos of the author and the featured country. We hope that these new, continuing articles in *The Mainstream* will help us build even stronger understanding and connections.

### Origins

The Presbyterian Community in the Democratic Republic of the Congo, commonly referred to in French as *Communauté Presbytérienne au Congo* (CPC), was pioneered by American Missionaries William H. Sheppard and Samuel N. Lapsley. In 1891, they created the first American Presbyterian Congo Mission (APCM) in Luebo, in the central part of the country. Today the church is fully autonomous and also one of the largest Presbyterian communities in Africa, with more than 1.2 million members spread across more than 1,000 congregations around the country.



William H. Sheppard



Samuel N. Lapsley

All has not been smooth sailing, however, as the CPC suffered internal strife and controversies from 1960, when the APCM handed full control and autonomy to the indigenes. Also, ethnic conflicts between communities in East Kasai and Shaba regions of the country between 1992 and 1994 led to the split of the church there, creating two groups—the West Kasai and the East Kasai regions. The intervention of church leadership was crucial in helping reduce conflict in the

region. Today, the West Kasai church runs a training college, and about 172 secondary and primary schools, mostly in the rural areas of this region, while the East Kasai church runs about 200 schools and provides other community services.

### Community Outreach

The Bible says, “. . . each of you should use whatever gift you have received to serve others, as faithful stewards of God’s grace in its various forms . . . so that in all things God may be praised through Jesus Christ” (1 Peter 4:10–11). The CPC, like many other early churches in Africa, followed this example by implanting itself through community outreach programs. The Presbyterian Church in Congo stands out as one of the most vibrant church communities in the country, due to its outreach programs.

As early as 1900, the missionaries realized the need for health services and established a health service in the Kasai Province. They had been confronted with the prevalence of malaria, which was killing many people, including some of the early missionaries. This set the trend for what was to follow in later years.

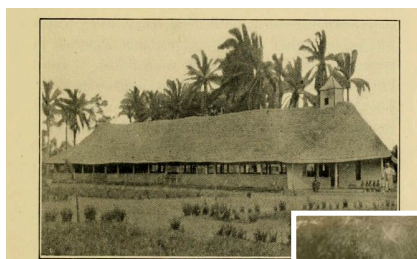
Today, the Church in Congo runs a program called the Congo Mission Network (CMN). This network runs several community programs, such as an educational scholarship program that was started by CPC and is supported by Presbyterians in the United States. It also has various partnerships with other churches in the PC(USA) to support social programs in the Congo, including a program that provides support for street children with basic school needs at the beginning of the





school year, and ensuring that they receive educational opportunities to further their education.

Other major community outreach programs include building and supporting primary and secondary schools, a radio ministry, a printing press, a bookstore, and a university. The Sheppard and Lapsley Presbyterian University of Congo is named after the pioneers of the church's ministry in that country.



Lapsley Memorial Church in Ibanje



Sheppard, left, with two Congolese men and camels (photo courtesy of Presbyterian Historical Society)

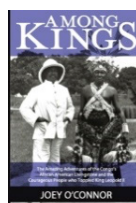
### Mission Engagement

Jesus' final command to his disciples was to make disciples of all nations and teach them to obey his commands. This great commission requires every Christian believer to preach the message of Christ to every corner of the earth. This command has been a cornerstone of the Presbyterian Church in the Congo engaging with partner churches in the world to bring the message of hope to all. This engagement goes back 125 years with sister churches like the PC(USA).

The CPC, in affiliation with the PC(USA), operates a partnership called the CMN, which is involved in evangelism, women's ministries, healthcare, education, and community development. To foster the work of God, a department for Christian education was created, which is responsible for promoting religion in schools, coordinating church leadership, and providing laity training, including children's and youth ministries, commonly referred to as Sunday Schools. The church also has an evangelism department responsible for evangelization, creating new churches, and sustaining the work of presbyteries. Because women make up the majority of all Christians, the church in Congo has a department of women and families, which seeks to promote development opportunities for women through training.

The CPC, as an affiliate of the PC(USA), has other programs with sister churches in the United States to promote evangelization and other social programs. These programs have been quite successful in helping local communities in areas ravaged by the ongoing armed conflicts in the country.

—PETER FOFUH



Note: You may be interested in reading *Among Kings* by Joey O'Connor, which recounts the adventures of Sheppard and Lapsley (available through ThriftBooks).

For a very short video about Sheppard and Lapsley, go to [youtube.com/watch?v=WXJLTNXHiJg](https://youtube.com/watch?v=WXJLTNXHiJg).



*Note: Although Peter Fofuh is from Cameroon, he generously offered to contribute this article about the Democratic Republic of the Congo.*

*Peter and his wife, Joelle (who is a GPC Elder), began attending GPC in 2013. They have three sons: David, Daryl, and William. The youngest of seven siblings, Peter has many relatives in Cameroon and returns to visit them at least once a year. He is a business enthusiast and has several business endeavors in Cameroon and the United States.*

*Peter is a member of the GPC Communications committee and the Christian Men's Fellowship (CMF). He is also the Mainstream's "International Desk Editor" for this column and authored the first article in the series.*

IF YOU WOULD LIKE TO CONTRIBUTE AN ARTICLE ABOUT YOUR HOME COUNTRY, CONTACT PETER FOFUH AT [OFFICE@GPCHURCH.ORG](mailto:OFFICE@GPCHURCH.ORG).

# WELCOME, NEW CHURCH OFFICERS!

THE FOLLOWING ELDERS AND DEACONS HAVE BEEN NOMINATED TO SERVE  
AND WERE ORDAINED DURING WORSHIP ON JANUARY 12, 2025.

---

## ELDERS

---



### Tom Bahls

Over the years at GPC, I have been involved in teaching the Godly Play curriculum in children's Sunday School, served as a church trustee, and participated in various music programs and committees. I previously served on Session from 2003 to 2005.

My spiritual journey has been a series of small, steady, and mostly unremarkable steps. I grew up attending a Presbyterian church in Michigan but fell away during college and the first few years of married life here in Gaithersburg. After moving to the area in 1982, our family was drawn back to the faith through GPC's summer VBS program. As our children became old enough to go to Sunday School, we knew that it was time to give them the same religious education that we'd had. Realizing that I needed to be a model of a good Christian to them made me pay attention again to my own spiritual growth. Over the years, my faith has grown through participation in Sunday worship services, adult Sunday School, and through fellowship with other church members.

As an Elder of GPC, I hope to help guide the church to reflect God's will in our policies, our community outreach, and our service to the congregation.

My wife, Betsey, and I have been members of GPC since 1992 and have both recently retired. We have three adult children—Erica, Scott, and Andrew—and two grandchildren.

finding a faith community was a priority for her. After moving to Gaithersburg to begin our postdoctoral fellowships at the NIH, we found our church home in GPC. I was baptized in 2001, and since then the Lord has blessed my family and me with a loving and supportive church family. Our children, Rebecca and Allen, who are now adults, attended GPP&K and grew up in the church. Over the years at GPC, I've grown spiritually through participation in adult ed classes, local mission projects, the Men's Bible Study, and the Young Families ministry that Rev. Norm Gordon launched when our children were preschoolers.

I have also had the privilege of serving GPC as a lay worship leader, children's Sunday School teacher, and Ruling Elder. I look forward to the next three years of service to my church family. To God be the glory!



### Corinne Kuypers—Denlinger

Originally from Woodstock, New York, and New York City, where I went to middle school, high school, and college, I moved to the Washington area in 1977. As long as I've been in this area, I still consider New York home. My husband

and I first lived in Virginia and then Maryland, with a two-year stop in Oregon where he went to graduate school. We have two sons, Timothy and Samuel. Tim lives in Frederick with his wife and son, and Sam lives in Brooklyn. Sam was very involved in the youth group in middle and high school, and I spent those years coordinating the Wednesday night youth dinners at GPC.

Currently I'm the Director of Philanthropy, Marketing and Public Relations with Adventist HealthCare, but I've had a long and rewarding career in business-critical information services serving many industries, including working with healthcare providers for the past 20 years.

I've always been drawn to church, even as a child, and to GPC ever since my family and I first attended a Christmas Eve service many decades ago. I'm honored to have this opportunity to serve my faith community.



### Michael Baxter

I grew up in Camp Springs, MD (near Andrews AFB), in a non-religious household. After graduating from the University of Maryland, I attended Johns Hopkins University for graduate school.

My spiritual development and faith in Christ began after I started dating my wife, Laura, as she shared her faith with me and made it clear that







## Larry Masselink

Born in Holland, Michigan, I grew up on a farm, the oldest of seven children. After attending a two-room school from Kindergarten to Grade 2 and Holland Christian Schools for Grades 3–12, I received a BA degree in math education from Calvin College (Michigan).

After graduation, I taught math at Fremont (Michigan) Christian School for 8 years, where I met my future wife, Mary. In 1976, we moved to Massachusetts, where I taught middle and high school math at Whitinsville Christian School. I retired in 2013 after 45 years of teaching. Our daughter, Leah, and her family live in Alexandria, while our son, Joel, and his family live in Rockville. In 2021 we moved to Maryland to be nearer to our children and grandchildren. Our search for a new church led us to GPC.

I was quite active in my previous church, Fairlawn Christian Reformed Church, where I served one term as a Deacon, three or four terms as an Elder, and 12 years as Sunday School Superintendent.

I like to go for walks, read, explore historic sites, and, during the winter, do jigsaw puzzles. Mary and I enjoy living near our children and grandchildren. We are blessed to worship and enjoy fellowship in a very diverse GPC.



## Sandy Menzies

I grew up in the Shenandoah Valley of Virginia, the second of four children, so I'm used to taking care of others. Baptized as a teenager in the Church of the Brethren, I served as their first female usher. My faith has encouraged and guided my journey, and it continues to grow

and mature with me.

I worked in biomedical research and quality system development for local pharmaceutical companies and the FDA for over 37 years. Standard Operating Procedures and standard practices are part of how I operate. These skills will be used during my service as an Elder.

This will be my second term as an Elder. I've also served as a Deacon and participated in several mission trips. I currently support GPC's Prison Ministry and the groups that organize the annual Interfaith 5K.

I became a member of GPC in 1994. In 1996, I met and married my husband, James Menzies, at GPC. When I'm not at GPC, I love to share the gift and joy of aging well in a business that focuses on retirement and later career coaching, yoga, and massage therapy. In addition, James and I can be found running, walking, or biking around the area.



## Paul Njofang

I am originally from Cameroon, and have been a member of GPC since 2002. From 2013 to 2015, I served as a Deacon, and from 2016 to 2018, I served as an Elder. I'm a Montgomery County Public Schools staff member. My wife, Vanissa, and I have been blessed with three

children—Kylie, Kylian, and Kristin.



## Loyce Simfukwe

I am a committed member of GPC and have served as an Usher Captain since 2023. Raised in a Christian family in Lilongwe, Malawi, my faith has been a constant foundation throughout my life, and it continues to shape my spiritual journey.

I work as a Diplomat, specializing in Political and Economic Affairs. My extensive experience in leadership, collaboration with diverse groups, and problem-solving equips me to foster understanding, unity, and growth within the church community.

Outside of my work and church responsibilities, I enjoy engaging with others through sports, reading, and community development initiatives. These hobbies reflect a belief in holistic well-being and the importance of balancing faith, service, and personal growth.

As an Elder, I am committed to leading with humility, integrity, and compassion. I aim to inspire others to strengthen their faith and actively participate in church life. I approach this new chapter of service with trust in God's guidance to fulfill the responsibilities of this sacred calling.



---

# DEACONS

---



Malvin Duncan

I grew up in Des Moines, Iowa, the 7th of 12 siblings. My mother was extremely ill while she was pregnant with me and she promised God that she would give Him her child if He would heal her. He did, and after I was born, my mother took me to church, placed me on the altar, and gave me to God. I became His child and hers. She raised me for Him. His Spirit would tell her whenever I did something wrong, so as soon as I got home, she told me what I had done wrong and said that I would be punished for it.

When I was 10, my life was transformed. I was drawn into a deep spiritual relationship but did not surrender until I was 14. I began to preach and lay my hands on people—even those who worshiped Satan. They felt God's power and if I was holding their hand, they quickly let go. I wanted to be one of the boys but grew up alone because people my age didn't know how to approach me. I could never hide. His Spirit in me always shouted even though I said nothing.

In 1965, I joined the Army. I was running from someone who wanted me to sing a solo, and I didn't think I could sing. I was quiet about who I was, but they said they knew someone I should meet. Soon I was part of a small group that sang in churches. Two of us shared the solos. God has a sense of humor—you can run but you can't hide!

Earlier, God had drawn me to Howertine. We married in 1986 and had two children, Michelle and Nolan.

Howertine and I attended the Bethesda First Baptist Church from 1968 until the early 1980's, before coming to GPC in the mid-1980's. I've helped in the Nursery since coming here and have been a Certified Kitchen Manager since 2012. I assist with setting up for activities in Lindsay Hall, have helped with VBS, and do food pick-ups for Catholic charities. I'm a member of CMF (Christian Men's Fellowship) and have also been a Stephen Minister and an Elder.



Mary Masselink

Some of the finest features of my life are the legacies of faith that formed and shaped who I am today. From my paternal grandmother, I learned to move beyond the sudden and untimely death of her husband, a grandfather I never knew, to live a life of faith, family, and preparing favorite foods. My maternal grandparents, both of whom were blessed with long lives, also exemplified lives filled with grit, grace, and generosity to those around them, even when terrible tragedies beset them.

My parents, sifted and shaped by their faithful families, provided my three siblings and me with love for the Lord, passion to serve the church, opportunities to offer hospitality, and experiences to expand our world and understanding of it. Dad, a college biology professor, relished God's creation, deep discussions, and family trips. Mom, a homemaker and seamstress extraordinaire, loyally cared for my dad through his struggle with dementia and eventual death.

When Larry and I married in 1973, we hoped that our relationship would exhibit many of the qualities that both of our families valued and practiced. As Christian school teachers, we were blessed with two children, Leah and Joel. Today we witness the legacies of our families woven into the fabric of our children's lives, who, with their spouses and our three grandchildren, all live in the greater D.C. area, a place we now call home after our move from Massachusetts in 2021.



Mary Nana

I grew up in Cameroon and completed my primary and secondary education there. I have seven siblings, two of whom live here in the United States. My husband, Joseph Tormen, and I are blessed with two sons and a daughter—Karl Nana, Phil Nana, and Ninna Nana.

I'm a nurse by profession and do mostly private duty care. I served as a Deacon previously and have been called back this year to serve for a second term.

*NOTE: BIOGRAPHIES AND FAITH STATEMENTS  
WERE EDITED FOR LENGTH.*







# ENJOY SEASONAL FOOD while Supporting Local Farms

Community Supported Agriculture (CSA) involves local farms offering “shares” for sale to local customers. When you invest in the upcoming growing season’s harvest by buying a share, you receive a weekly collection of local fruits, vegetables, and herbs, possibly with fresh meats, dairy products, or specialties like honey or eggs.

Elisa McClelland, who has split a CSA for years with Alex Parker, Mary Beth Lawrence, and Mary Spencer, notes that links to recipes help “expand your palate.” Alex considers opening each box a surprise, remembering pink celery (native to China) as one of several unusual vegetables that won her over.

Evi and Phil Melberg toast the excellent quality of local Common Root Farm’s organic produce, harvested the day before they pick it up. “At times, Ryan [the farmer] features produce from other Maryland organic farms. We have signed up for year-round pick-up again in 2025!”

CSAs offer a variety of box sizes, lengths of commitment, places for pick-up or delivery, and ways to pay. Many CSAs offer opportunities to visit the farm and attend special events like an end-of-season gathering. Members sign up at the beginning of each year, so now is the time to find a CSA that suits you.

Join a CSA to:

- 🌱 invest in local farming,
- 🌱 meet who grows and harvests your food with sustainable farming practices,
- 🌱 reduce packaging and transportation costs, and
- 🌱 enjoy seasonal, ultra-fresh produce ~ maybe served in new ways!

## Montgomery County CSAs

- 🌱 Common Root Farm (Derwood) and DRDs Got Your Six Farm (Gaithersburg) offer our most local CSAs.
- 🌱 Love & Grit Farm (Germantown), East Rivendell Farm (Damascus), and Giovanni Organic Farm (Dickerson) offer CSAs of their combined products.
- 🌱 Maryland Harvest Market collects products from 9 local farms, with pick-ups in DC, Silver Spring, Brookeville, and Ashton.
- 🌱 The Farm at Our House (Brookeville) offers pick-ups in Olney, Rockville, and Bethesda.
- 🌱 Norman’s Farm Market (Bethesda and Chevy Chase) offers CSAs with a wide variety of local products from land and sea.
- 🌱 Lancaster Farm Fresh Coop collects products from over 100 farms in Lancaster, Pennsylvania, and delivers them to local pick-up spots.

## Frederick County CSAs

- 🌱 In the city of Frederick, Sycamore Springs Farm and Twin Hills Farm offer CSAs.
- 🌱 North of Frederick, Moon Valley Farm (Woodsboro), Oakie Doke Farms (Keymar), Pleasant Hill Produce (Walkersville), and The Williams Farm (Thurmont) offer CSAs.
- 🌱 West of Frederick, Pleasant Pond Farm (Smithsburg) and Open Book Farm (Middletown) offer CSAs.

—LISA WHITEHEAD  
CREATION CARE COMMITTEE

# FOCUS ON STEWARDSHIP — WHAT HAVE WE DONE? HOW DID WE DO?

For the past year, the Stewardship committee has attempted to bring to the attention of our congregation the fact that Stewardship is a year-round activity, not simply a campaign that happens in the fall and culminates on Consecration (Commitment) Sunday. Several methods were used to make Stewardship more visible to the church: **1)** We gave several Minute for Mission talks; **2)** We requested pastoral support through scripture and sermons; **3)** Articles were placed in the *Mainstream*; **4)** Notices of Stewardship activities, such as planned giving, were in the bulletin; **5)** Stewardship campaign brochures and a letter from our Transitional Pastor were mailed out, along with Time and Talent surveys and Estimate of Giving cards; **6)** Member testimonials were made; **7)** Notices of the Stewardship campaign progress were placed near the entry doors in the Narthex.

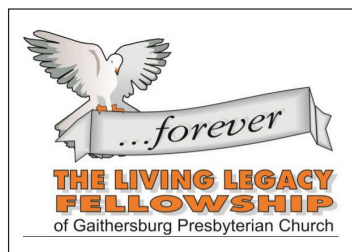
As of this post, we have received **150 Estimate of Giving cards** that will total **\$757,224** toward the 2025 operating budget. Comparing 2025 results to those of 2024 (152 pledges, \$720,216 pledged), data shows a decrease in the number of pledges but a significant increase in the amount of money pledged in the present campaign. The increase in the amount pledged in 2025 is a welcome turnaround, as GPC had experienced a drop in pledging every year since 2021, due primarily

to GPC's shrinking membership. "Each of you should give what you have decided in your heart to give, not reluctantly or under compulsion, for God loves a cheerful giver." (2 Corinthians 9:7) Remember, stewardship is a year-round activity; if you have not made a pledge yet, it is never too late.

We would like to thank you for your contributions to GPC. Many of you have been long-term contributors. Many, many thanks. God has been gracefully generous to us; likewise fruitful giving is at the heart of the Christian faith. I think we should feel the joy of graceful generosity, no matter how much or how little you give; your contributions will be put to beneficial use as we move forward with GPC's mission. This is Faith in Action, the theme of the 2025 campaign. As our membership is decreasing, now might be a good time to invite a friend(s) or a neighbor(s) to join us for worship or a church function. Little acts like this could potentially turn our membership around.

In general, the Stewardship committee is happy with the structure of the campaign. However, we would like to know what you think. Did GPC benefit from our more robust communication plan? How did we do? What could we have done better? How could we improve Stewardship? Let me know.

—GARY SCHUMACHER  
(drschu1@yahoo.com)  
STEWARDSHIP COMMITTEE



## LIVING LEGACY FELLOWSHIP LUNCHEON

Plan to attend the annual Living Legacy Fellowship luncheon, to be held **Sunday, May 4, at 12:00 Noon in Lindsay Hall**. A "Meet-and-Greet" time will precede the delicious, catered meal and short program. Our keynote speaker

will be **Olanda Carr from the Presbyterian Foundation**. You may learn and inquire about ways to make future legacy gifts, such as will bequests and beneficiary designations for retirement plans and life insurance.

There is no cost to attend but reservations are required. To **RSVP** or if you have questions, contact Kay Penn at [livinglegacygift@gmail.com](mailto:livinglegacygift@gmail.com) no later than **Sunday, April 21**.

## SAVE THE DATE!





# THANK YOU FOR YOUR CHRISTMASTIME GENEROSITY!

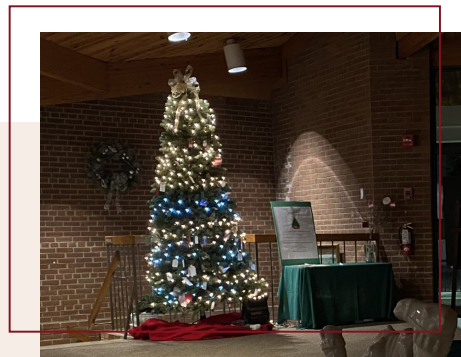


Photo by Mike Pratt

## THE GIVING TREE

Thanks to our very generous congregation, many in our local community and worldwide had a brighter Christmas! Over \$3,800 in cash/checks was donated to the various organizations that we collected for! These included Medical Benevolence, Presbyterian Disaster Assistance, Ukraine War Relief, and our Little Free Pantry. Multiple gift cards were made available to Summit Hall ES families in need, and seven students there were each given at least two presents apiece to open. Our Prison Ministry was well blessed with monies as well as many items that they had requested for their inmates. I delivered many bags filled with medical supplies and new clothing for soldiers to our neighbors at the St. Andrews Ukrainian Orthodox Cathedral in Silver Spring. The Little Free Pantry here at GPC received food items and books that were sorted through and filled up the boxes right outside our doors! All of these organizations send their THANK YOU's and blessings to each of you!!

—CINDY ZAMMIT

## THE PRISON MINISTRY

We extend our heartfelt gratitude to GPC for the generous Christmas donations, which we delivered to the Clarksburg Detention Center and the Rockville Pre-Release Center. The donations, including T-shirts, socks, toiletries, snacks, and stamps, allowed us to show God's love to individuals who may often feel forgotten.

The prisons are not accepting greeting cards at this time. We have a healthy inventory of donated greeting cards, so kindly ask that cards not be dropped off in the GPC Library until further notice.

With sincere thanks and blessings,

—SANDY MENZIES,  
PAM CARLSON,  
AND SHARI MCCANN  
THE PRISON MINISTRY

## GPC STAFFING UPDATE



Welcome to GPC's new **Operations Manager, Raianna Canady**. She brings her skills and enthusiasm to this new part-time position, working on Tuesdays and Thursdays from 10:00 a.m. to 3:00 p.m. Her desk is in the main office. Stop by and say Hello!

GPC is seeking a new **Facilities Manager** and You Can Help: The job description for this part-time position is posted on the GPC website. Just click on the "[Open Positions](#)" listing under the "About" navigational link on the Home page. Please share this information with anyone you believe possesses the skills and qualities desired for GPC's next Facilities Manager. For more information and/or to submit a resume, contact the church office by sending an email to [office@gpchurch.org](mailto:office@gpchurch.org) or calling 301-948-9418.



## IT'S NOT TOO SOON TO MAKE PLANS FOR CAMPING IN AUGUST!

A summer camping trip to **Greenbrier State Park** is being organized again. This is a wonderful opportunity to combine your love of camping and/or just time at the lake to enjoy fellowship with other GPC families. For a more rustic weekend, **Tent Camping is August 15-17. A Day-at-the-Lake is on Saturday, August 16.** The Mosher, Choi, and Chen families have already reserved campsites C68, C69, and C70 in the Cedar Loop, which has electrical hookups and is pet friendly. You are invited to reserve a site near one of ours. Sites in this popular campground go quickly, so reserve now! **Greenbrier** is also a great place to spend a day at the lake. The only "official" activity will be a potluck-style dinner. The rest of the time is for swimming, volleyball, boating, hiking, fishing, or sunbathing. Email Fred Mosher at [alicefredannaalex@verizon.net](mailto:alicefredannaalex@verizon.net) or Kwang Choi at [khchoi3@verizen.net](mailto:khchoi3@verizen.net) with your campsite number, or if you want to be kept in the loop for this activity.

For a flyer with more information and to print and pass around, go to [primelabel.com/gpc.pdf](http://primelabel.com/gpc.pdf).



### DIRECTORY CHANGES

*Addresses and phone numbers  
are available through the church office.*

Address change 🏠

Phone number change 📞

---

Joan Dunlop 🏠

Bridget & (Ivo) Etone 🏠

Sharon Mungai 📞

Rebecca Nanga 🏠

Jacob Rodawla & Sarawni Daw 📞



## CHRISTIAN SYMPATHY

*We extend our sympathy to the members of our congregation who have lost loved ones.*

#### Scholastica Muluh

her grandmother, Deborah Muluh,  
in Bamenda, Cameroon  
December 1, 2024

#### Pam Clinch

her mother, Patricia Bird,  
in Gaithersburg, MD  
December 20, 2024

#### Frantz Wlson

his sister, Daisy Simmons,  
in Danville, VA  
January 1, 2025

#### Jeff Hildebrant

his mother, Betty Jean Hildebrant,  
in Vestal, NY  
January 13, 2025





## SANCTUARY FLOWER ORDERS

### WANT TO DONATE EASTER FLOWERS *for the Sanctuary?*

Flowers cost **\$14/plant** and the last day to place your order is **Sunday, April 13**. You may take plants home with you after the 11:00 AM Easter worship service.

Flowers may be given in honor or memory of someone, or to celebrate a special occasion.

The weekly altar flowers for Sunday worship services cost \$50, and you may take them home with you after the 11:00 AM service.

To access flower forms and place your order, visit [gpchurch.org/flower-form](https://gpchurch.org/flower-form) or scan the QR code below.



## THE MAINSTREAM

### Distribution of Newsletters and Submission Deadlines for Articles

The Mainstream is published quarterly. It is sent electronically and hard copies are mailed in February, May, August, and November.

**Submissions should be sent  
to [jobermiller@gpchurch.org](mailto:jobermiller@gpchurch.org) and  
[bmoldroyd53@gmail.com](mailto:bmoldroyd53@gmail.com)  
by January 15, April 15,  
July 15, and October 15.**

Questions? Contact the church office.

## FINANCIAL SUMMARY REPORT

December 2024

% OF  
2024 YTD BUDGET

### INCOME

Envelope Pledged .....	\$697,585 .....	93%
Envelope Unpledged .....	\$269,410 .....	108%
Loose Offering .....	\$21,095 .....	141%
Other Income .....	\$1,530 .....	51%
Room Rent .....	\$400 .....	0%
Interest & Dividends .....	\$13,234 .....	110%
Manse Rental .....	\$25,640 .....	95%
Bequest Unpledged .....	\$281,627 .....	0%
Mizo Church Offering .....	\$5,000 .....	100%

Total .....

	\$1,315,521 .....	124%
--	-------------------	------

### EXPENSE

NCP Membership .....	\$28,213 .....	100%
Human Resources .....	\$617,861 .....	97%
Buildings & Grounds .....	\$241,030 .....	104%
Office Operations .....	\$32,955 .....	89%
Communications .....	\$4,457 .....	99%
Stewardship .....	\$4,482 .....	63%
Comm Engagement .....	\$88,391 .....	89%
Eq Disciples .....	\$16,681 .....	86%
Vital Worship .....	\$7,744 .....	74%
Congregational Life .....	\$1,871 .....	62%
Other .....	\$0 .....	0%
Session .....	\$1,166 .....	80%

Total .....

	\$1,044,851 .....	97%
--	-------------------	-----

NET .....

	\$270,670
--	-----------

To request a complete financial summary,  
email [accountingmanager@gpchurch.org](mailto:accountingmanager@gpchurch.org).



## GPC MEDIA POLICY

Gaithersburg Presbyterian Church (GPC) uses print and digital media of church life in communications materials to share the ministry of GPC with our congregation and community at large. GPC reserves the right to use any media taken at any activity sponsored by GPC, without the express written consent of those individuals included within the media. GPC may use any such media in publications, social media, and any website.



# *THE MAINSTREAM*

**Gaithersburg Presbyterian Church**

610 South Frederick Avenue

Gaithersburg, MD 20877-1297

*RETURN SERVICE REQUESTED*

NON-PROFIT U.S.  
ORGANIZATION  
U.S. POSTAGE  
**PAID**  
Suburban Maryland  
PERMIT NO. 10005

*ASH WEDNESDAY IS MARCH 5 / EASTER IS APRIL 20*



## *FIND IT FAST!*

- Engaging with GPC . . . Worship Services (pp. 4-5)
- PNC Update (p. 5)
- Congratulations to Kris Maldarelli, CRE (p. 5)
- Ash Wednesday & Holy Week Services (p. 7)
- GPC's New Emergency Alert System (p. 7)
- Montgomery Philharmonic Upcoming Concerts (p. 7)
- Christian Women Fellowship (CWF) (p. 8)
- Christian Men's Fellowship (CMF) (p. 8)
- RJM Remembers and Honors Irene Coleman (p. 9)
- GPC Spans the Globe (Feature Article) (pp. 10-11)
- Welcome to our Incoming Elders & Deacons (pp. 12-14)
- Community Supported Agriculture (p. 15)
- Focus on Stewardship – How Did We Do? (p. 16)
- Camping Opportunity in August (p. 18)
- Ordering Easter Flowers (p. 19)