



Your *Trusted* Pro Shop for Bowhunters

Inside Falls Archery, you'll find a shop built on grit, tradition, and a lifetime of real hunting experience. Our shelves are stocked with proven bow & hunting equipment, our benches are dedicated to hands-on tuning, and our team brings field-tested know-how to everyone who walks through our doors. Whether you're stopping in with a question or gearing up for your next season, we're here to help you get exactly what you need.

THE PRO SHOP →



Family Owned & Respected Since 1974

For nearly 50 years, Falls Archery has carried a three-generation legacy rooted in hard hunting and dependable craftsmanship. We've spent decades fine-tuning bows, testing gear in the woods, and passing down knowledge that only real experience can teach. If you want straight talk, solid setups, and performance you can trust in the field—you're in the right place.

ABOUT US →


Rooted in the Heart of Menomonee Falls

Located right in downtown Menomonee Falls, Falls Archery has long been a gathering place for hunters who value skill, service, and tradition. Our storefront has welcomed generations of shooters looking for honest guidance, dependable equipment, and a shop that treats them like part of the family. Visit us anytime—we're proud to continue a tradition that's been part of this community for decades.

VISIT US →

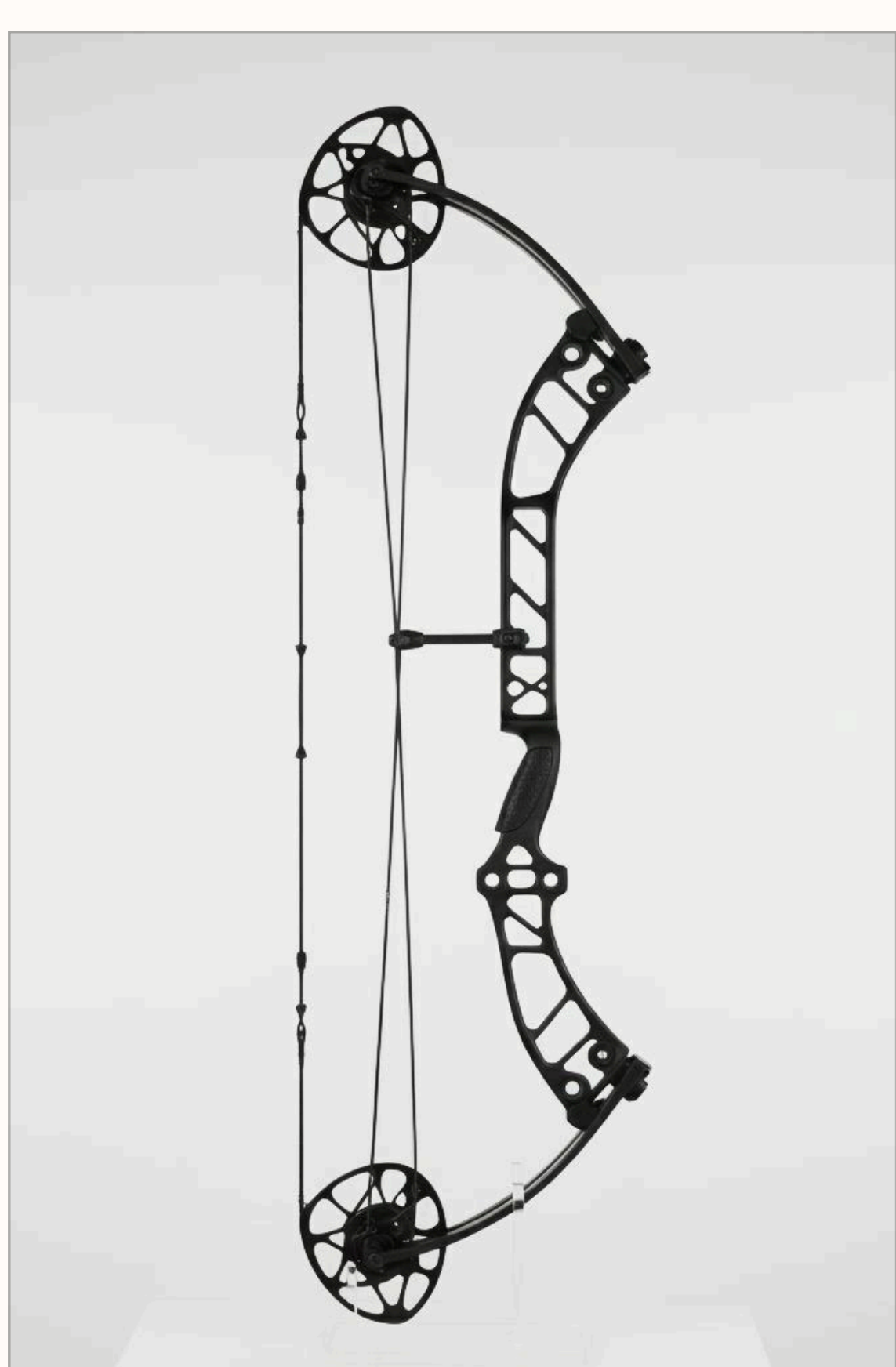


Our Featured Bow Lineup for Fall 2025



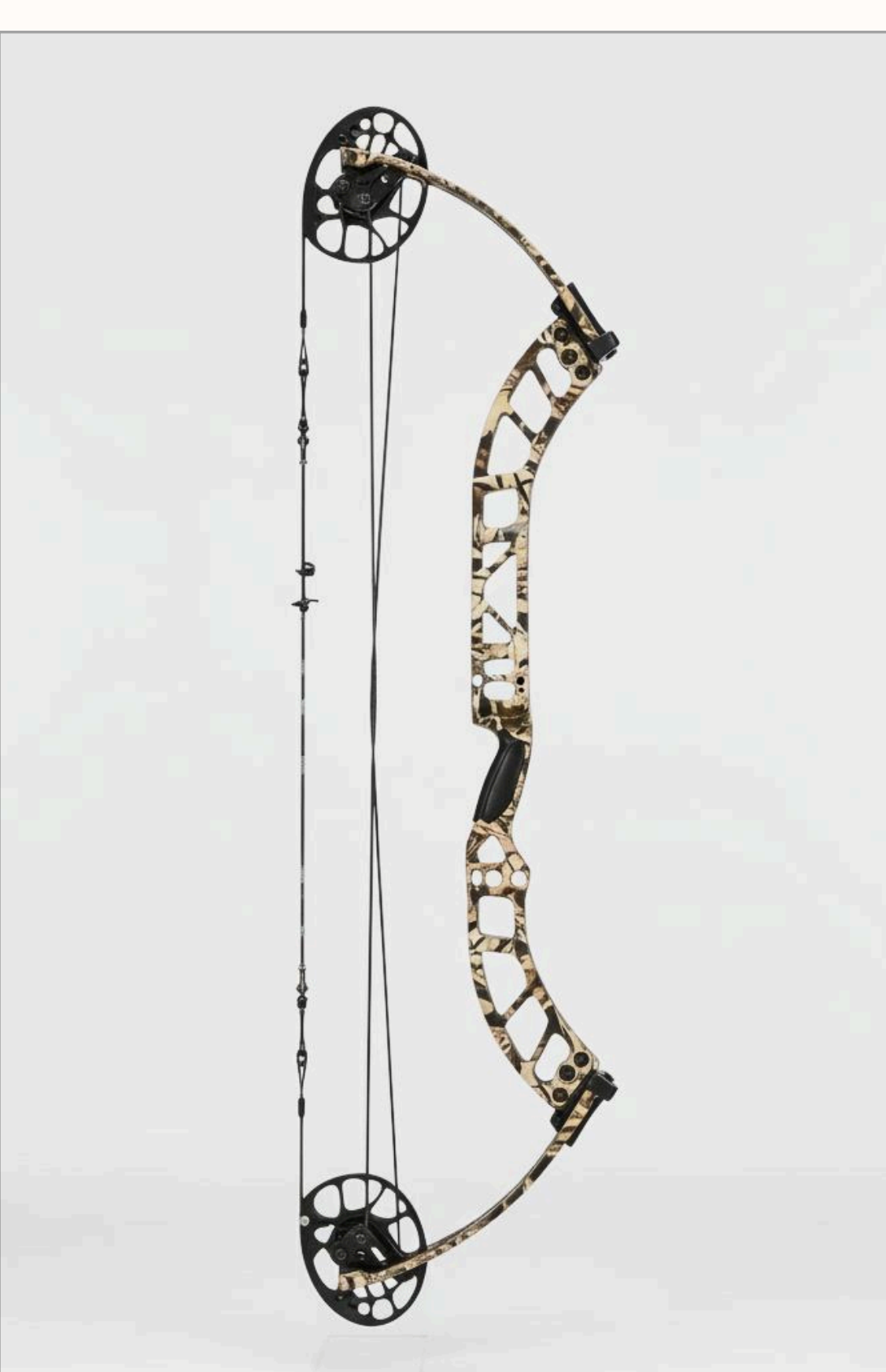
RIDGELINE

Built for demanding terrain and long holds, the Ridgeline delivers smooth draw cycles, rock-solid stability, and consistent accuracy whether you're on the range or deep in the backcountry.



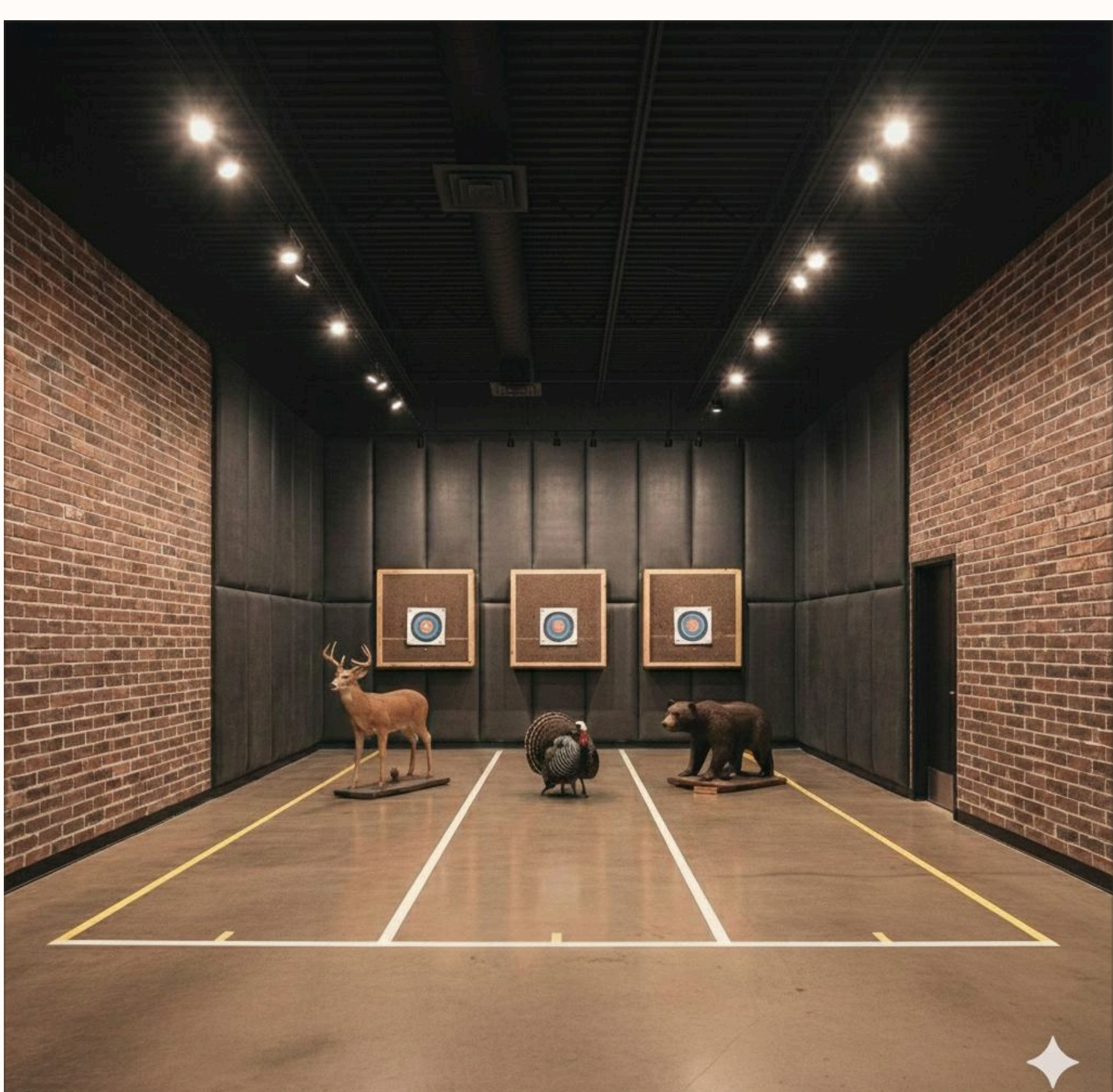
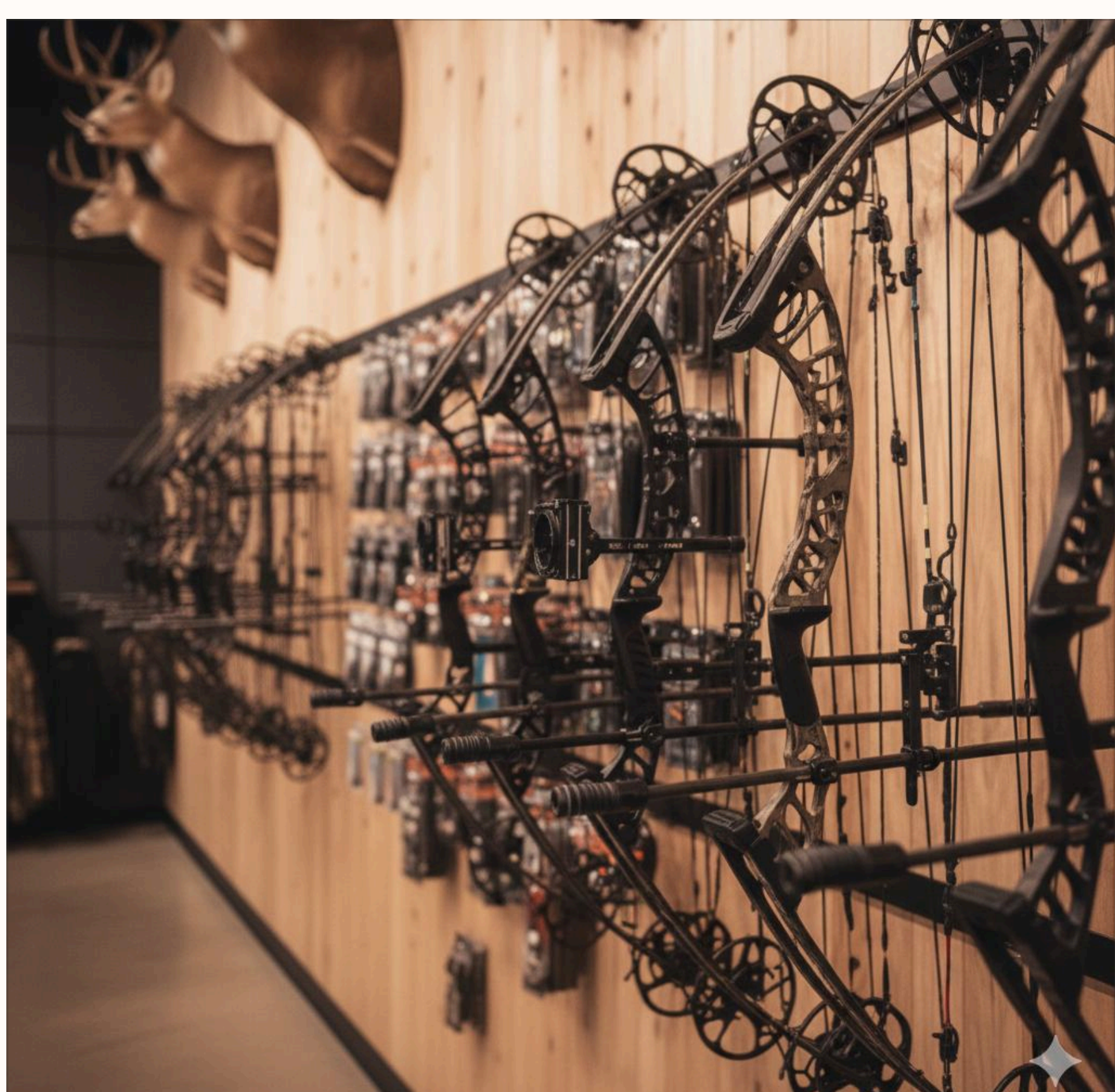
HELIX

The Helix brings advanced engineering to the field with efficient cams, vibration-reducing tech, and a lightweight frame that makes every shot feel crisp, balanced, and controlled.



WOODLAND

Quiet, dependable, and instinctively smooth, the Woodlands is designed for hunters who prefer a natural shooting feel and steady performance in close-quarters encounters.



Bow Tuning

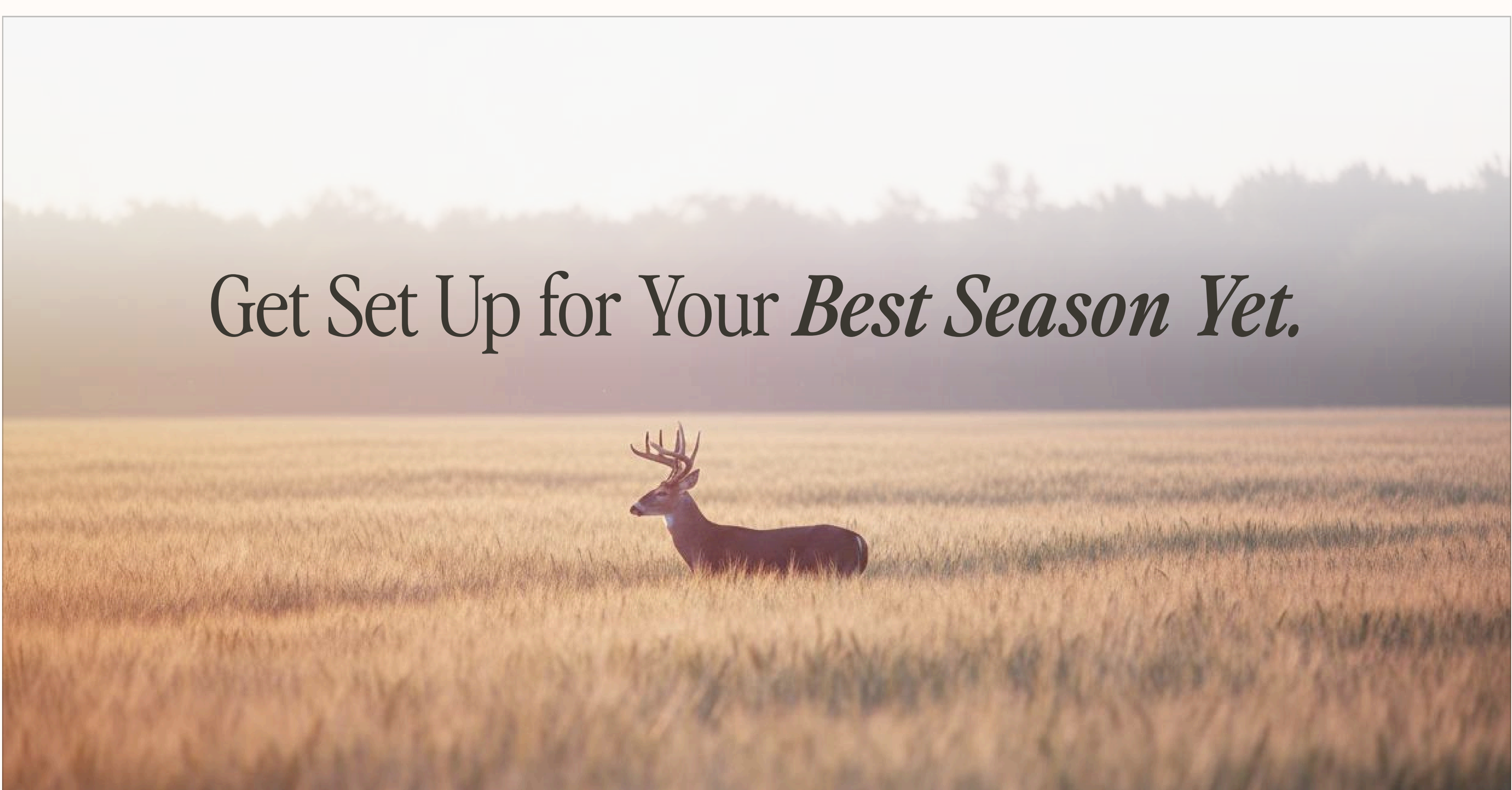
From new setups to full pro-level tune-ups, we dial in compound bows for clean, consistent performance. Our tuning includes accessory installation, proper fitting, cam and rest timing, sight leveling, D-loop work, paper tuning, and string care—everything your bow needs to shoot its best.

OUR SERVICES →

Archery Range

Dial in your shot on our indoor range, built for practice, testing setups, and sharpening skills year-round. Whether you're sighting in a new bow or prepping for the season, our range gives you a controlled, comfortable space to shoot with confidence.

ARCHERY RANGE →



WEBSITE DESIGNED BY JESSE PAULSEN©TERMS & CONDITIONSPRIVACY POLICY