

ENGAGE GLOBALLY



IMPACT REPORT

2025

FROM THE DIRECTOR



ABOUT US

Engage Globally supports community-led sustainable development in collaboration with nine traditional village communities in rural Ghana. Our local partners work with community leaders, women's groups, families, and program participants to choose priorities, design projects, and implement programming. We provide capacity building, funding, monitoring and evaluation, and strategic planning to ensure project effectiveness.

By focusing on long-term partnerships, we pursue a truly grassroots and collaborative approach to create meaningful, comprehensive, inclusive, and sustainable progress.

OUR MISSION: Engage Globally enables community-led sustainable development by engaging local partners in education, job training, small business development, food security, women's empowerment, and environmental conservation.

OUR VISION: We envision a world in which communities have the educational, economic, and environmental resources they need to develop equitably and sustainably.

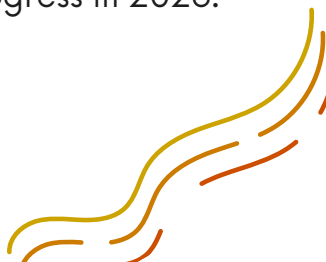
2025 was a year of resilience and deepening for Engage Globally and our local partner, Community Empowerment Resources (CER). The significant challenges we faced, including severe weather, currency devaluation, and the loss of foreign healthcare aid, strengthened our commitment to community-led change and our pursuit of sustainable development.

Despite these hurdles, we increased program enrollment, expanded our health and food security efforts, and broadened opportunities for girls and women to learn and lead. We were especially pleased that students at our new Duahi Community Learning Center and Vocational Education Center had a very successful first year.

We are grateful to our board, volunteers, and donors for your continued support and look forward to continuing our collaborative progress in 2026.

Heather

Heather Heckel, PhD, Director, engage@engageglobally.org



OUR PARTNERS - COMMUNITY EMPOWERMENT RESOURCES (CER)



WALISU

Founder and Director
CER



SUALE

Program Director
Vocational Training
& Boys Club



RAHMA

Program Director
Women's Agriculture
& Girls Club



FATAWU

Program Director
Community Learning
Centers

Engage Globally closely collaborates with our local partners, Community Empowerment Resources (CER). Our community-led approach means that all projects are chosen and implemented by the CER team in consultation with community members and program participants. By building on local knowledge, social ties, and available resources, we can implement comprehensive and sustainable programs. CER's close local relationships also enable effective responses to challenges. This capacity for resilience was clear in 2025 when we were able to rapidly distribute malaria nets, provide food to families suffering from drought, and repair schools damaged by severe storms.

Engage Globally supports organizational learning, assists with project design, and guides monitoring and evaluation. Our shared learning and deep trust strengthen our impacts. We also amplify the voices and accomplishments of our local partners so a wider audience can learn about and support effective, community-led sustainable development.

Our work is a true act of love, care, and concern for humanity, which will ripple into many more families and communities. All the beneficiaries are very grateful and share their many thanks and appreciation. They also send their endless warm regards with more blessings to you all.

Walisu Alhassan, Founder and Director, CER

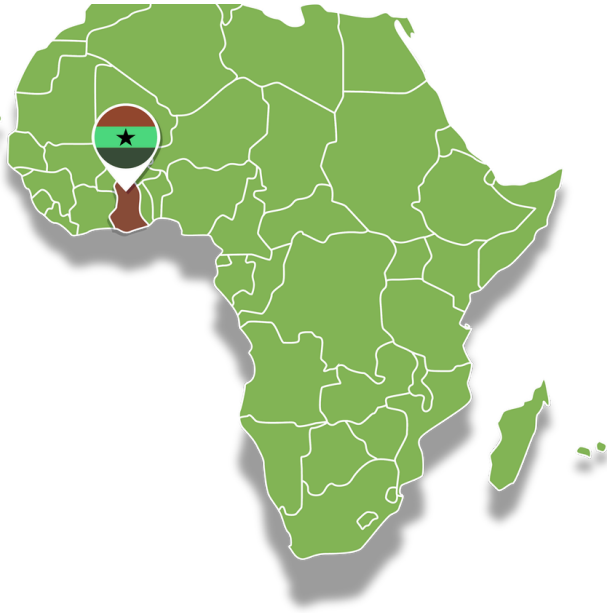
Thank you very much for supporting us over the years. Your funding has made a significant difference in the lives of women and children in our community. Many women are now able to provide three meals for their families, and children of school-going age are accessing quality education.

We've seen families thrive, women gain confidence, and communities transform. We are grateful for your generosity and commitment to creating a brighter future for Ghanaian women and children.

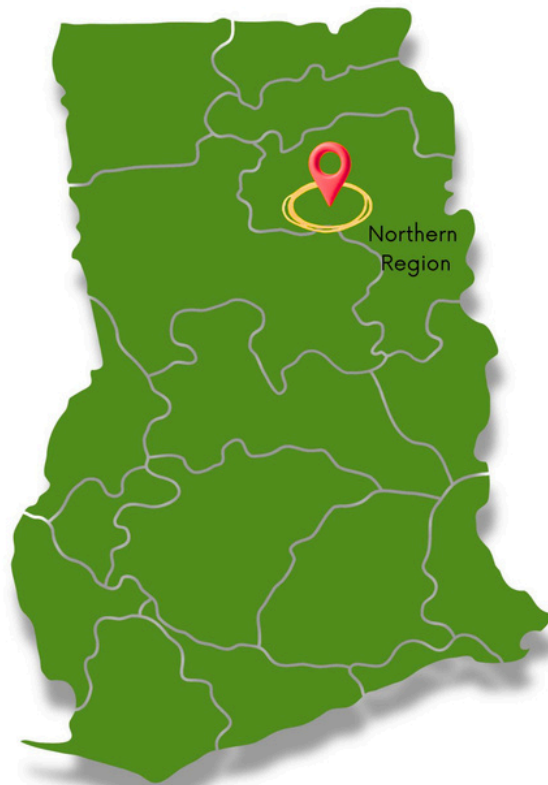
Rahmatu Abubakari, Director of Women's Programs

WHERE WE WORK

Ghana, Africa




Engage Globally partners with nine traditional rural villages in Ghana's Northern Region. Community members are primarily subsistence farmers and most live on less than \$2 per day in income. Access to clean water, education, food, electricity, and sanitation are core challenges.



2025 IMPACTS



125 Students
4th Grade to College



60,000
School Lunches



35
Vocational Trainees



442 Students
Pre-K to 3rd Grade



40 Women Farmers
Earning Incomes



Health Education
for 120 girls & women




New Vocational
Education Center



New website & social
media reaching
3000+ people



Local staff grows to
28 employees



Food security improves
for 1000+ families



200 people attend
Engage events



60 young women receive
menstruation supplies

COMMUNITY LEARNING CENTERS

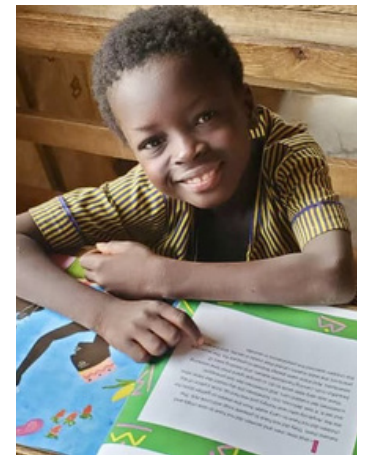
Our four community learning centers provide educational opportunities for children from six village communities in kindergarten through 2nd grade. Our programs are comprehensive and strive to address educational, health, nutritional, and clothing needs. 2025 was the first full year of operation for our new Duahi Learning Center. As the first school in their community, this school is very popular and is already enrolling over 70 students.

These schools have many positive intersectional impacts, including:

- A school lunch program providing essential nutrition in a region that is facing severe food shortages due to droughts, rising temperatures, population growth, and soil degradation.
- School uniforms sewn by our vocational trainees.
- A variety of learning supplies including books, notebooks, and games.
- Employing 23 teachers, cooks, and staff. Most of the teachers are graduates of our Youth Education Program. All of the cooks and caretakers live in the villages where the schools are located. On average, each employee uses their income to support ten other family members.
- Environmental education with school gardens, tree planting, and environmentally themed books.
- An after-school soccer (football) program.

2025 ENROLLMENT

Community schools	4
Total student enrollment	442
Local employees	23
Graduates in 2025	43
Number of school lunches served	60,000+



YOUTH EDUCATION

Our Youth Education Program (YEP) continues to grow rapidly as more students graduate from our early primary Community Learning Centers and more families request support for their children. This program helps students continue their education from 3rd grade through 9th grade in regional government and private schools. Local staff ensure that each child gets a school placement, which is a time consuming process, and then provide ongoing mentoring. All students receive textbooks, learning supplies, required fees, and a bicycle. Bicycles are especially important as they make it possible to travel long distances even in extreme weather. For girls, they also increase safety during the school commute.

After 9th grade, students can continue into high school if they pass national entrance exams, or they can join our Vocational Education Center. High schools are residential and we provide all living and learning supplies along with food and transportation stipends. High school students receive individualized support from Walisu, CER's Director, to ensure their success.

I enjoy learning English.

Sidikatu

I want to be a teacher to help my parents.

Haruna

I hope to use the education I learn in my high school to teach my brothers and sisters and my juniors and anyone who needs my help.

Abiba

2025 ENROLLMENT

Elementary	94
Junior High School	18
High School	11
University	1
Girls and boys club members	71



GIRLS AND BOYS CLUBS

Our clubs bring together students in our Youth Education Program, Vocational Education Center, and youth from the community who are not attending school. These clubs grew rapidly this year as participants invited their friends to join. The clubs provide many benefits, including:

- Health education from an experienced nurse/midwife. This year we added health classes for the boys club, which were very successful.
- Provision of personal hygiene supplies for girls including period packs and soap.
- Mentoring by long-term local staff who actively engage participants in discussions and activities.
- English language skill practice.
- Community service activities.
- Bringing youth from five villages together, which builds community across the region and strengthens peer support. Broadly, the clubs help to encourage youth to focus on opportunities in their communities instead of planning risky migration to urban settings.

This program offers many opportunities for expansion to include more students, village communities, and activities that support education, health, job training, and community building.

I want to be a midwife.

Iddrisu

I enjoy learning and going to the club meetings every time.

Taiba

They teach us togetherness.

Zeinab



VOCATIONAL EDUCATION

In 2025, we transitioned our vocational program to focus on our new Vocational Education Center (VEC). Twenty young women trained as seamstresses and weavers while studying literacy and math. The trainees were selected by their community to encourage them to remain in their homes and not migrate to urban centers. Students also participated in very popular health education and cooking classes. This was our first full year operating the VEC, and we look forward to expanding with additional training shops, more students, and training in how to manage a social enterprise.

In addition to the VEC, we continued to support those who were completing their training with regional small businesses. Most of these trainees will graduate in early 2026. Graduation ceremonies for many businesses, like Seidu's pictured below, are occasions for regional celebrations. Once certified, graduates can open their own shops and become trainers themselves.



2025 ENROLLMENT

Vocational Education Center students	20
Vocational trainees in small businesses	15
Small businesses supported	12
Graduates in 2025	5



WOMEN'S AGRICULTURE

Under the impressive leadership of program director Rahmatu, 40 women farmers participated in multiple trainings, engaged in detailed health education sessions, and received agricultural inputs including fertilizer, tools, seeds, and plowing.

This project continues to transform lives, with many positive outcomes including:

- Increased harvests - Though rains were low, the region did recover from the prior year's severe drought. Women's harvests increased in corn, rice, soybeans, and peanuts (groundnuts).
- Earned income - Every farmer was able to sell some surplus food. Participants report that they use this funding for education and health expenses, as well as to purchase other types of food for their families.
- Health education - all participants attended health trainings on topics like general health, first aid, pregnancy, and malaria. Though they face many significant health challenges, the women shared that learning more helped them better care for themselves and their families.
- School lunch program - Our local partners purchased the surplus harvest from many of the rice and corn growers, providing locally grown food for our school lunch program which feeds over 400 children daily.
- Changing roles for women - interviews consistently show that participants feel more comfortable as leaders in their homes and communities.

*Hands-on training made me brave to try new ways
and it helped me get a good yield this year.*

Hawabu

The group were very supportive of each other and that's what kept me going.

Alima

*The program respected women and that helped many families
get food on their table.*

Ayisheutu



HEALTH

With the generous support of Women In Leadership (WIL) of Philadelphia and two individual donors, and guided by the expertise of Madam Latifa, a local nurse/midwife, we significantly expanded our health program this year. Components included:

- Health education for women farmers on maternal health, child health, and first aid.
- Health education for girls and young women across our programs, with a focus on personal hygiene, mental health, and peer, family, and community support.
- Distribution of menstruation and hygiene supplies to over 60 girls.
- Health education for boys in their club, which included discussions of how to reduce gender-based violence.
- Distribution of malaria nets to mothers of children under age 5 and pregnant women. The loss of global malaria funding is expected to significantly impact this region, which has very high rates of malaria during the rainy season.
- Interviews with participants illuminated many barriers to women accessing emergency health care, including limited financial resources, family roles and expectations, lack of transportation, and beliefs about medical treatment. We realized that for some women and their children, we could quickly assist by providing an emergency health fund. This fund, operated by our local partners, will pay for transportation to the regional hospital and medications.





ENGAGE GLOBALLY



Resilience

- Organic fertilizer, pesticide, seeds
- Agriculture training and innovation
- Plowing with tractor
- King Motos to reduce harvest spoilage
- Health education with nurse/midwife
- Farming tools and fencing
- Rice processing for storage

Women's Agriculture

Vocational Training

- Vocational Education Center
- Literacy and math education
- Trade supplies/tools
- Reduction of trafficking & emigration
- Mentoring & guest speakers
- Health education & hygiene supplies
- Social enterprise development

Sustainability

COMMUNITY-LED PROGRAMS

Empowerment

- Four community schools
- Daily lunch to improve health/nutrition
- Trained local bilingual teachers
- Learning supplies including little libraries
- Vocational trainees make desks, weave carpets, and sew uniforms
- Rainwater catchment and handwashing lessons
- Vegetable gardens and tree planting

Community Learning Centers

Youth Education Program

- Placement in regional schools
- Bicycles to reach schools
- All school supplies including textbooks
- Required entrance, testing, PTA fees
- School uniforms
- Girls and boys clubs for mentoring and tutoring
- Support until graduation and employment

Community

Intersectional, Cross-Program Priorities

- Gender equity
- Environmental Sustainability
- Food Security
- Health

The diagram above illustrates our comprehensive and intersectional approach to sustainable development. Our programs have many components to ensure that our projects create meaningful, long-term impacts for participants and their communities.

COMMUNITY ENGAGEMENT

We were thrilled to host four major events this year in Boston, New York City, Washington, DC, and online. Participants learned about sustainable development, listened to great music by board member Seth Armentrout, and contributed generously to our education programs. Our team also presented on global issues to several community organizations.

We shared newsletters, learning updates on students whose educations are sponsored, and our 2024 annual report to update our community throughout the year.

Our social media messaging on Instagram, LinkedIn, and Facebook amplifies the work of our local partners reaching a community of over 1,900 people with more than 47,000 views.

Jessica and Hailey led a fantastic event outside of Boston. What struck me was the creativity and energy they bottled and then uncorked. Held in a big, busy neighborhood bar, I heard college and work friends catching up on one another's fast-moving lives. The discussion about Engage was upbeat and clear: Engage Globally offers a rare thing, the opportunity to do unadulterated good. To teach children who otherwise would not have access to education. To elevate families into lives of productive self-sufficiency. And to meaningfully impact a local economy. Engage builds on grassroots fundraising to support local communities in powerful ways that make a real difference in thousands of lives.

J. Andrew



GRATITUNES — GIVE A BIKE!

GIVING TUESDAY WITH SETH TROUT



THANK YOU TO OUR GENEROUS COMMUNITY OF SUPPORTERS!

Engage holds a special place in my heart, not only because it largely focuses on youth education and women's empowerment, but because all our programs are driven by community-led sustainable development. I really believe in this program because we are a partner--helping local leadership with strategies and resources but ultimately letting the community decide what they need and giving us the opportunity to help.

Casey

I'm honored to support Engage Globally and contribute to programs that uplift and invest in the strength and potential of girls and women in Ghana, empowering them to learn, thrive, and create lasting impact in their communities.

Charlie

GIVING CIRCLES MAKE A DIFFERENCE!

Women farmers - For the last three years, Action Africa Giving Circle has generously supported the piloting and growth of our Women's Farming Program. Their grants have enabled us to provide 40 women with farming training and inputs, and to increase food security for their 400 family members as well as our 400 community school students. Today, the women are earning incomes and helping other women with their farming.

Health education and hygiene supplies - Women International Leaders of Philadelphia has supported Engage's work with several grants. This year they are funding our growing health education and first aid training program along with the regular distribution of menstruation products and soap to young women in our Vocational Education Center, Youth Education Program, and Girls' Club.

FINANCE SUMMARY

2025

Total income	\$154,071
Programming	\$114,805
Operational expenses	\$18,976
Total expenses	\$133,781

DONOR SPOTLIGHT



Thanks to Charlotte for donating her birthday and to her family and friends for helping her sponsor a child's education! Charlotte shared, "I like learning Dagbani and seeing pictures of kids from Ghana in Kindergarten, just like me!"

IN APPRECIATION

We are grateful to our wonderful community of supporters who make our work possible. A huge thanks to:

- Our directors and advisors
- Our 2025 interns & volunteers
- Businesses including AXIS, Guido's Heart, & Happily Ever Exploring
- Action Africa Giving Circle
- Women International Leaders of Philadelphia
- Companies providing matching funding including: AXIS, Chase, Gartner, IBM, and Salesforce
- Individuals, family foundations, family giving funds, and donor-advised fund supporters



OUR
2026
PRIORITIES

- 1** Construct and open a village's first school.
- 2** Enroll a new kindergarten class with 29 new education sponsorships.
- 3** Expand and enhance our women's farming program.
- 4** Ensure we provide healthy lunches for every child.
- 5** Continue our work with resilience, community, and hope.

ENGAGE WITH US IN 2026

- Sponsor a Child's Education! Sponsors donate \$30 each month (\$360 a year) to provide a child with the opportunity to attend school and have a daily lunch. Please share this impactful opportunity with anyone who might be interested.
- Donate your birthday or share another life celebration to support one of our programs that is meaningful to you. We will send a simple guide and create a donation page for you to make this an easy way to make a difference!
- Invite an Engage Globally team member to be a guest speaker for your community. We can share our work or discuss sustainable development topics like the environment and global women's issues.
- Join our team! We are seeking new Advisory Board members.
- Contact us anytime with questions, ideas, and suggestions. We love hearing from our supporters!



Engage Globally

414 Silo Dr. Asheville, NC 28806

828-490-1694

engage@engageglobally.org

<https://www.engageglobally.org/>

Follow us:

[Facebook](#)

[Instagram](#)

[LinkedIn](#)

**Engage Globally is a 501(c)(3) non-profit organization
with EIN 45-5310434.**