



# SIDING

  
**TERRY'S**  
Discount Windows & More LLC

**AN AWARD-WINNING COMPANY**

1153 Marsh Street, Suite A

Valparaiso, IN 46385

219-476-0400

[www.terrysdiscountwindows.com](http://www.terrysdiscountwindows.com)



# WHY TERRY'S DISCOUNT WINDOWS & MORE?



## WHO ARE WE

**Terry's Discount Windows & More, LLC** is an award winning 5 star company with national recognition, located in Valparaiso, IN and is family owned and operated since 2003. Terry brings over 30 years experience in the industry, with over 40 years in management and customer service. Since 2003, we have had thousands of happy customers, many of which have become repeat customers. Terry's is one of the fastest growing window, siding, and door companies in Northwest Indiana. Our business was opened in hopes that we would be taken in good faith as a business guided by Christian values and principles.

Based on integrity, we strive to be set apart from other companies by striving to provide 100% customer satisfaction which is our top priority. If a problem arises, we will do everything in our power to rectify the situation. Only the very best is done to ensure our customer's happiness. Terry's has achieved the highest rating that the Better Business Bureau offers, which is the A+ rating. We are members in good standing with the local Chamber of Commerce and Builders Association.

## THE SALES TEAM

We are honored to have a unique, highly knowledgeable, friendly staff, with personalized customer service available to you, the customer, at unbelievable saving! Our sales team truly care about our customers. You will never be just another number with Terry's

## THE INSTALLERS

We have hand-selected our master certified installers, which work exclusively for Terry's. They set the benchmark in the area for top-quality workmanship, neatness and efficiency. Every crew leader is a master installer with over 25 years in the installation business. They are very personable, and are willing to go the extra mile to keep our customers happy.

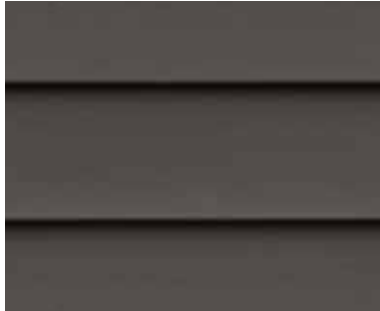


# ULTIMATE SIDING

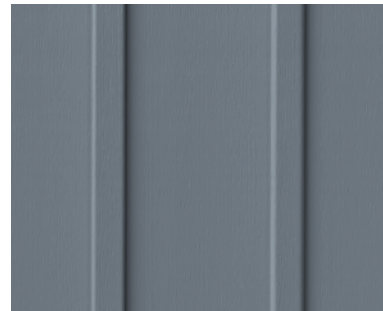
## PROFILES



Triple 6 in Clay



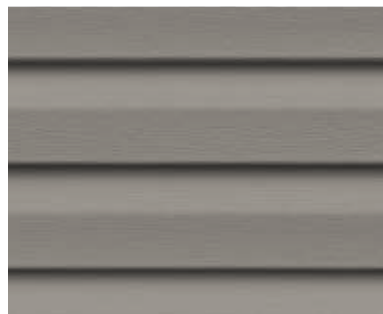
Double 7 in Graphite



Board & Batten in Oceanside



Quad 4" Clapboard in Country Beige



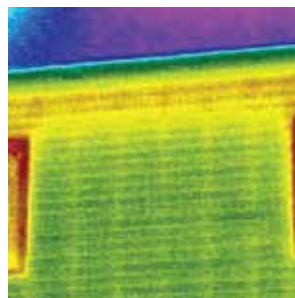
Quad 4.5" Dutchlap in Greystone

## FEATURES

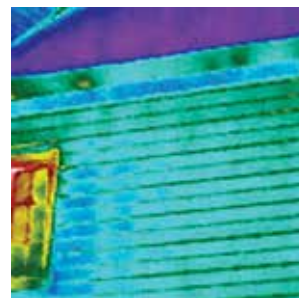
- Looks like real cedar but doesn't act like it
- Noise reduction up to 45%
- Insulates better than wood, brick and fiber cement - saving money
- Built with TXL™ Lamination Technology for superior bonding
- Wind resistant up to 160 mph depending on profile
- Industry-leading warranty

## PREVENTION

Heat and energy escape through the studs of your home's walls; this is known as thermal bridging. Only insulated vinyl siding reduces thermal bridging.



Studs make up 25% of your home's walls. The yellow lines show how heat transfers through the studs.



Our Siding reduces the amount of heat and energy you lose through studs. And that's as beautiful as the siding itself.

# ELITE SIDING



## PROFILES



Double 4" in Regatta



Double 4.5" Dutchlap in Graphite



Double 5" in Clay

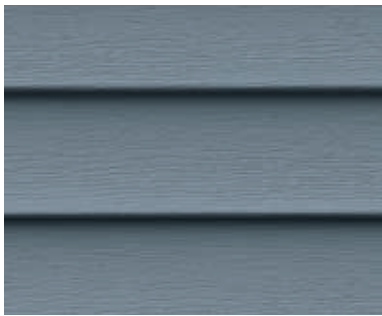
## FEATURES

- Beautifully textured grain of forest-grown cedar
- No painting. No scraping. Virtually no maintenance
- Special rolled-over nailing hem provides up to 180 mph wind load performance
- Integri-Lock<sup>®</sup> locking system snaps panels tightly together for secure installation
- Extra-wide 5/8" profile edge with square bottom edge provides enhanced shadow lines for greater visual appeal
- .044" nominal thickness
- Double Lifetime Warranty

# PRIME SIDING



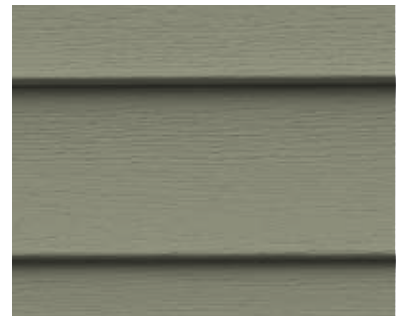
## PROFILES



Double 4" in Polaris



Double 4" Dutchlap in Greystone



Double 5" in Cypress



Double 5" Dutchlap in Driftwood

## FEATURES

- Beautifully textured grain of forest-grown cedar
- No painting. No scraping. Virtually no maintenance
- Special rolled-over nailing hem provides up to 160 mph wind load performance
- Extra-wide 1/2" profile edge with square bottom edge provides enhanced shadow lines for greater visual appeal
- .042" nominal thickness
- Double Lifetime Warranty

# SHAKE & SHINGLES SIDING



## PROFILES



Double 7" in Cedar Shingle  
in Black Walnut



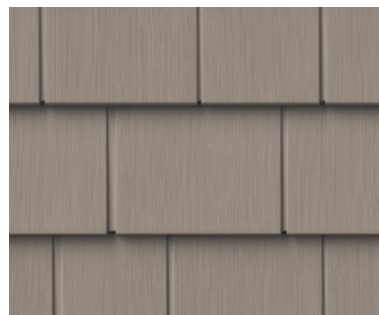
8" Single 7" Cedar Shingle  
in Slate



Hand-Split Shake in Greystone



Half Round Shingle in Clay



Double 5 Shingle in Canyon

## FEATURES

- Create a bold accent on your house
- Range of shapes and woodgrains
- No Painting. No Scraping. Virtually no maintenance.
- Limited Lifetime Warranty



## DARK COLORS



ESPRESSO



REGATTA



LIGHTHOUSE RED



GRAPHITE



OLIVE



SLATE



CARBON



INDIGO



PEPPERCORN

## MEDIUM COLORS



POLARIS



CANYON



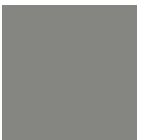
OCEANSIDE



NANTUCKET



HONEY OAK



METROPOLITAN GRAY

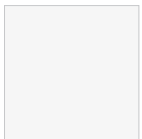
## LIGHT COLORS



COUNTRY BEIGE



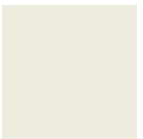
WHEAT



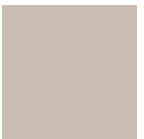
ASPEN WHITE



CYPRESS



PEARL



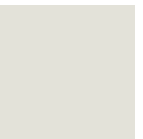
MOCHA



CLAY



SADDLE



BONE



GREYSTONE



RYE



DRIFTWOOD

Ultimate Siding - Quad 4 and Quad 4.5 not available in dark and medium colors  
 Ultimate Siding - Double 7, Triple 6 and Board & Batten - not available in Carbon, Indigo and Peppercorn  
 Elite Siding - Double 5" - not available in dark and medium colors  
 Prime Siding - Double 4, Double 4 Dutchlap and Double 5 Dutchlap - not available in dark colors  
 Prime Siding - Double 5 - not available in Dark and Medium Colors  
 Shake Siding - Only D7 and S7 available in all colors

## YOUR SUPERIOR EXTERIOR HOMETOWN PROFESSIONALS

At Terry's, all of our products are American made and green products. We specialize in Replacement Windows, Siding, Doors, Roofing, Gutters, and more.

At Terry's we give FREE in-home estimates and energy inspections. We offer Senior Citizen and Military Discounts. Financing if available and we accept Visa, Master Card, and Discover. We are also licensed, bonded, and insured.

Let the experts at Terry's Discount Windows and More help identify the ideal solution for you. Stop in our showroom conveniently located behind the Harley Davidson dealer on Hwy. 30.

Call us today at **(219) 476-0400** to set up an appointment for a free in home estimate with one of our certified specialists. Or contact us online at: **[www.terrysdiscountwindows.com](http://www.terrysdiscountwindows.com)**.

## OUR FAMILY SERVING YOURS SINCE 2003



1153 Marsh St. Suite A, Valparaiso  
(219) 476-0400  
[www.terrysdiscountwindows.com](http://www.terrysdiscountwindows.com)

