

Donor Report 2024



P.E.A.C.H.

Philanthropic Endowment Advancing Children's Health



Thank You

Tina and I would like to personally thank you for your incredible support in 2024. Your generosity—whether through financial contributions, volunteering, or advocacy, has had a profound impact on our mission to fund research for pediatric cancers. After our daughter Caroline's passing in 20217 we knew we wanted to carry on her legacy of making kids well.



Because of supporters like you, we continue to push forward in our fight for children battling this devastating illness. Your involvement gives us the strength to keep going and the hope that, together, we can make a difference.

As we look ahead to 2025, we are filled with gratitude for the progress we've made and the lives we've touched. Your support is not just appreciated—it's changing lives.

Michael & Tina Kanis

Founders

Mission Overview

Caroline's PEACH Foundation is on a mission to make kids well, care for their families, and bring art into the places they spend time.

01. Make Kids Well

The majority of our funding, is dedicated to pediatric cancer research. We believe that investing in novel treatments and scientific advancements is the most effective way to improve outcomes for children facing cancer. By prioritizing research, we are working toward a more tailored and transparent approach to pediatric cancer, increased survival rates, and ultimately, a cure.

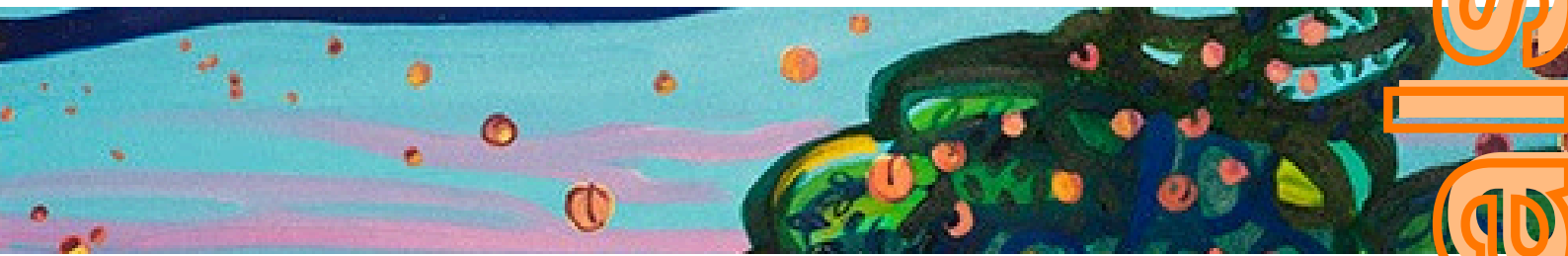
02. Care For Their Families

We allocate a smaller percentage of our funds to directly support families affected by pediatric cancer. This assistance can include financial aid for medical expenses, travel costs, and everyday essentials, as well as emotional and practical support. We recognize that a cancer diagnosis impacts the entire family, and our goal is to ease their burden so they can focus on what matters most—caring for their child.

03. Art

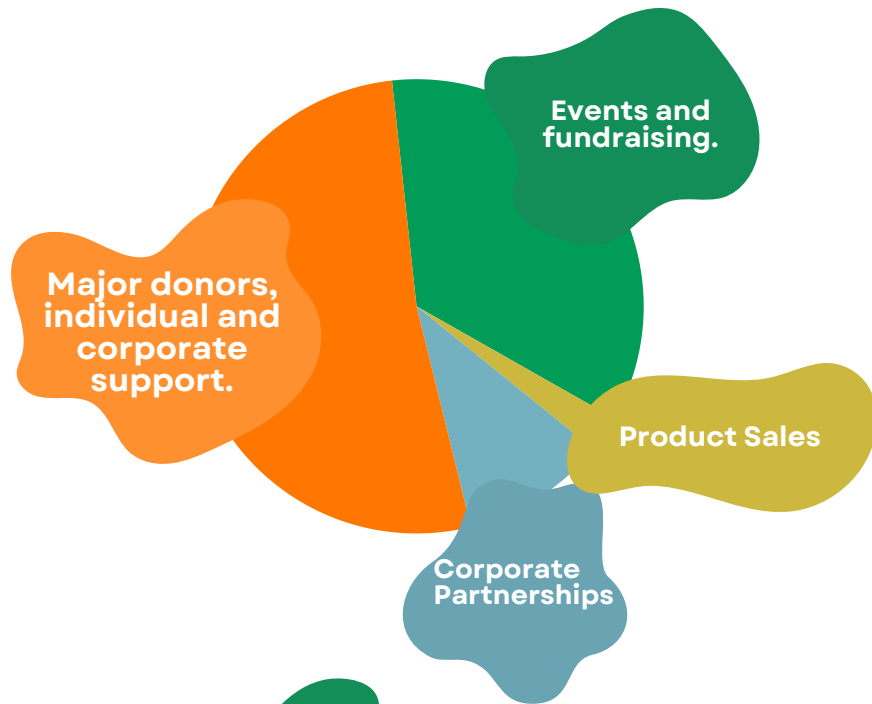
We dedicate the smallest percentage of our resources to creating healing and hopeful environments by installing art in research labs and hospitals. Cancer treatment and research can be an dark experience. By bringing art into these spaces, we aim to provide comfort, inspiration, and moments of joy in places that can otherwise feel sterile and intimidating.





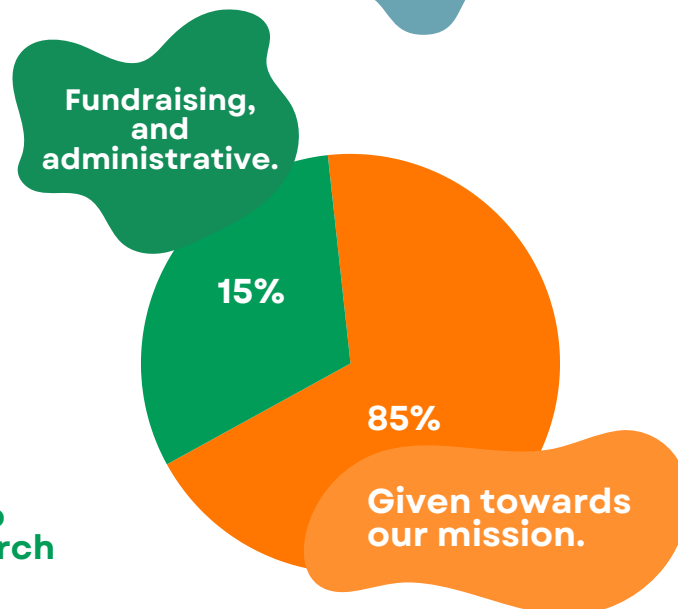
Money In

Representing **219k**, the total funds received by PEACH during the 2024 fiscal year.



Money Out

Represents our overall spending for the 2024 fiscal year.



In January 2025 we directed \$100,000 from 2024's funds to Beat Childhood Cancer Research Consortium.

** Does not include our Executive Director salary which was covered by an intercompany in 2024.

FUN FACT

For every \$1 given around \$0.85 went towards our mission.

Financials 2024



Director Recap

As we reflect on 2024, we are overwhelmed with gratitude for your generosity and belief in our mission.

But the work is far from over, and with your continued support, we are ready to make an even greater impact in 2025. From expanding our impact on funding novel research to connecting more with our local community of pediatric cancer patients we are committed to making every dollar raised count!

Together, we can continue to fight for better treatments and brighter futures. Thank you for being part of this journey, we can't wait to see what we accomplish together in 2025!

Paige Schut
Executive Director





Connect

We would love to hear from you!

Phone

616.344.4154

Email

info@carolinespeach.org

Website

www.carolinespeach.org

Location

496 Lincoln Ave
Holland, MI 49423



Instagram

[carolines.peach.foundation](https://www.instagram.com/carolines.peach.foundation)



Facebook

[carolines.peach.foundation](https://www.facebook.com/carolines.peach.foundation)



LinkedIn

[carolines.peach.foundation](https://www.linkedin.com/company/carolines.peach.foundation)

