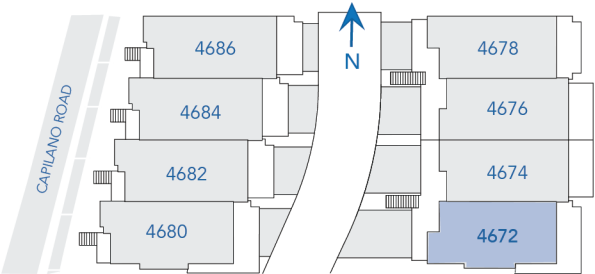




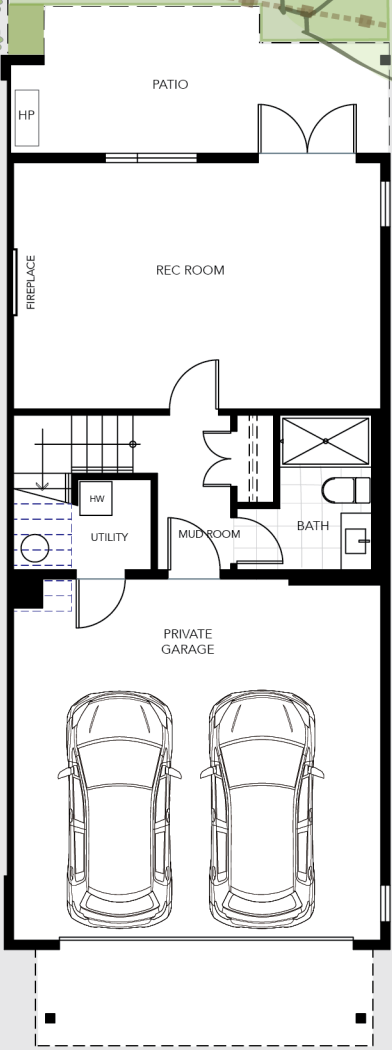
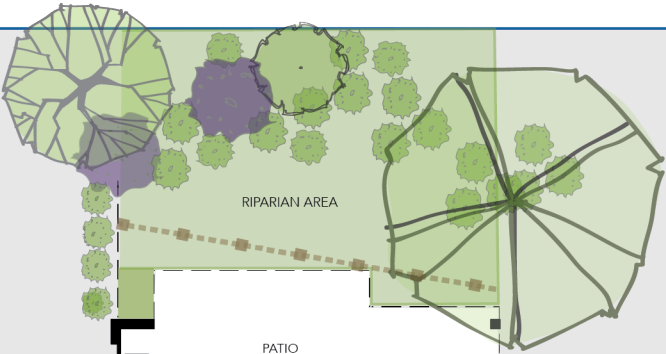
4672  
CAPILANO ROAD



ONE OF EIGHT  
EXCLUSIVE TOWNHOMES

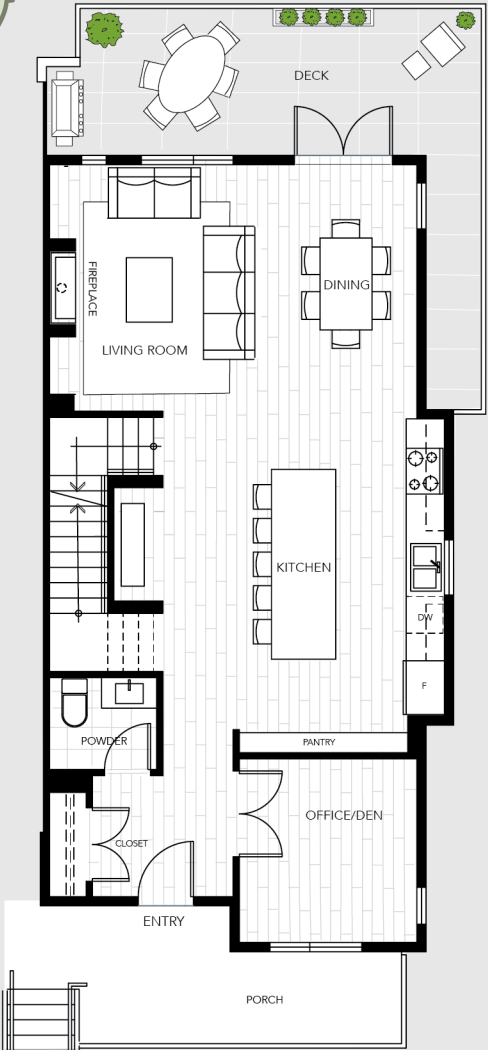
3 BEDROOMS + DEN

INTERIOR:  
2,200 SQ FT  
PLUS GARAGE:  
412 SQ FT



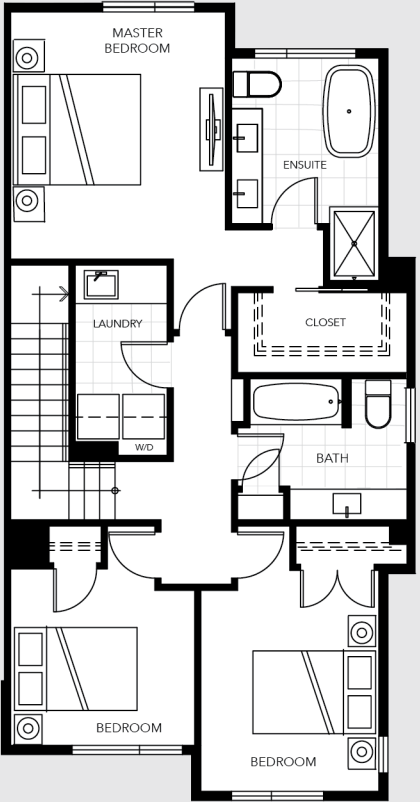
GROUND

465 SQ FT



MAIN

879 SQ FT



UPPER

856 SQ FT