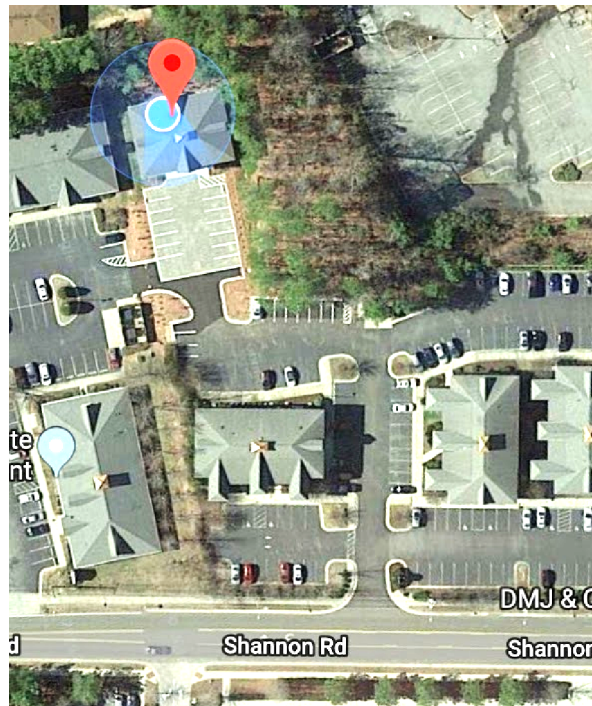




Directions to Catalyst Therapeutic Services

Our offices are located at 3616 Shannon Road, Suite 200, Durham, NC, 27713. We are located in a complex of offices called Shannon Summit, which you will see has a big green sign at the entrance to the parking lot.

Our building is directly BEHIND building 3620, so when you drive between 3620 and 3612, you will see our office building in the back to the left.



Directions to our offices:

[Click Here for Google Maps Directions](#)

FROM RALEIGH: Take I-40 west toward Chapel Hill. Take the exit for NC-55 (#278) and stay in the left 2 lanes. Turn left (north) onto NC-55. In 1.6 miles, turn left onto Martin Luther King Jr Parkway and travel 4.6 miles on MLK Parkway. Turn left onto Shannon Road and drive about .2 miles. Turn right into the office complex called Shannon Summit. Our office is 3616, behind building 3620. Our clinic is at the top of the stairs.

FROM CHAPEL HILL/GREENSBORO: Take US-15/US-501 toward Downtown Durham. Take exit 105b for Martin Luther King Jr Parkway toward South Square. Continue straight on MLK Pkwy 0.6 miles. Turn right onto Shannon Road and drive about .2 miles. Turn right into the office complex called Shannon Summit. Our office is 3616, behind building 3620. Our clinic is at the top of the stairs.



CATALYST THERAPEUTIC SERVICES

FROM DUKE CAMPUS AREA (15-501): Travel south on 15-501 and exit onto Martin Luther King Drive. Drive south/east on MLK Pkwy for approximately 0.6 miles. Turn right onto Shannon Road and drive about .2 miles. Turn right into the office complex called Shannon Summit. Our office is 3616, behind building 3620. Our clinic is at the top of the stairs.

FROM DOWNTOWN DURHAM: Drive on South Mangum (or other road to cross US 147) then turn right on W. Lakewood Ave. Stay on W. Lakewood Ave 0.3 miles to where it becomes University Dr., and remain on University Drive for 1.2 miles. Make a slight right onto Durham-Chapel Hill Blvd. In 1.9 miles, turn left onto Shannon Road. Stay on Shannon Road for 0.9 miles. Turn right into the office complex called Shannon Summit. Our office is 3616, behind building 3620. Our clinic is at the top of the stairs.