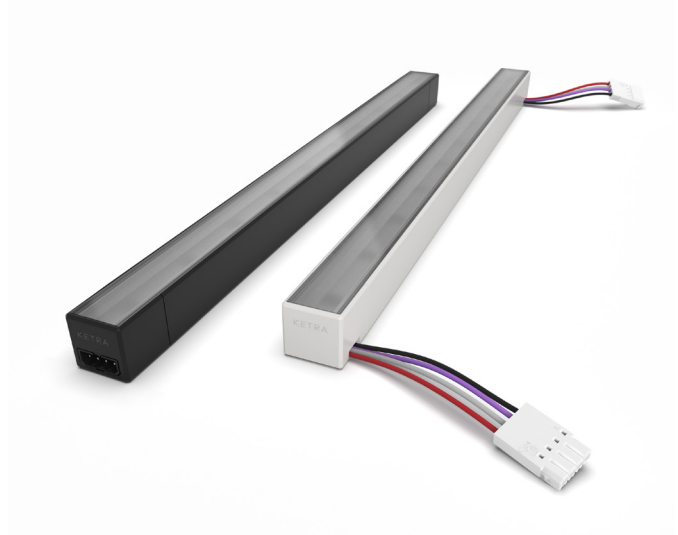


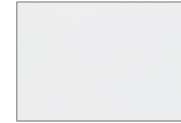
LS0 Lightbar Slim

Features

- Slim profile design suitable for small spaces and a wide variety of lighting applications such as cove, under-cabinet and specialty areas
- Simple end-to-end connection up to 24 ft (7.3 m) of lightbar in a run
- Options available for direct line of sight applications and for applications where the light can be hidden from view.
 - Uniform Lens (**Coming in Phase 2**)
 - High Output
 - Long Run
- Custom lengths that can be ordered in 1 in (25.4 mm) increments
- Compatible in HomeWorks 21.6 or greater (HomeWorks QSX) and Athena systems (**Coming in Phase 2**)
- Remotely powered and controlled by the X96 controller
- Title 24 JA8 Compliant
- Featuring the Ketra Tech Difference
 - **Dynamic Spectrum**—precisely tunes the amount of light across the visible spectrum to produce Natural Light, Natural Dimming and Vibrancy.
 - **High Def Palette**—capable of providing a wide range of 16.7 million colors, including pastels, saturated colors and high CRI whites spanning from 1,400K to 10,000K.
 - **TruBeam**—produces uniform color across any available beam angle.
 - **Color Lock**—guarantees your desired color point at a one-step MacAdam Ellipse across all Ketra product families and over each product’s lifetime.



Housing Color Options



Matte White



Matte Black

ORDERING GUIDE

Please download this [PDF](#) to use the full functionality of the ordering guide.

Order code: HW-LS0HO350WH12

HW-	LS0	HO350	WH	12
Product Line	Model	Lens Style & Lm/ft	Fixture Color	Length

Product Line	Code	Fixture Color	Code
Commercial (Athena compatible)	Coming in Phase 2	White	WH
Residential (HomeWorks compatible)	HW-	Black	BL
Lens Style & Lm/ft		Length	
Style	Lm/ft		
Uniform Lens ¹	250	12 in (304.8 mm) segment ³	12
High Output ²	350	24 in (609.6 mm) segment ³	24
Long Run ²	200	48 in (1219.2 mm) segment ³	48
		84 in (2133.6 mm) segment ³	84
		Custom to the inch	N
			N

Custom Ordering Option

- Also available to custom order in 1 in (25.4 mm) increments with straight and flexible connectors
- Minimum Length 10 in (254 mm)
- Maximum Length 96 in (2438 mm)

Endcap

- Straight connectors for end-to-end connections
- Flexible connectors for corner or angled connections
- End connector cover to terminate the last product

¹ Use Uniform Lens style for illuminating reflective surfaces (e.g., polished granite) and line of direct sight applications.

² Use Long Run or High Output style for applications where the light is hidden from view is acceptable.

³ Applies to commercial only.