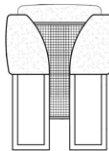




ENTITY DINING CHAIR

*PRODUCT SHOWN MAY NOT DEPICT STANDARD OFFERING

TECHNICAL DRAWINGS



DIMENSIONS

MEASUREMENTS ARE
APPROXIMATE

Overall Width: 21"

Overall Height: 28"

Overall Depth: 18"

SW: 18"

SH: 18"

SD: 14"

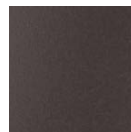
Metal Base: Powder Coated Steel Mesh and Frame

Metal Finish Options: Oil Rubbed Bronze or Gunmetal

COM @ 54" Plain: 5.5 yards



Oil Rubbed
Bronze



Gunmetal