

PRODUCT GUIDE

LANDSCAPE & ARCHITECTURAL LIGHTING

FXLuminaire®



FINISH CODES

Metal								Powder Coat: Standard					Powder Coat: Specialty [†]			Composite		
AB	AB	AT	AT	CU	BS	SS	NP [†]	BZ	DG	WI	SB	FB	M	FW ⁺	SV ⁺	CB	DT	DS
Antique Bronze on Copper	Antique Bronze on Brass	Antique Tumbled on Copper	Antique Tumbled on Brass	Copper	Natural Brass	Stainless Steel	Nickel Plate	Bronze Metallic	Desert Granite	Weathered Iron	Sedona Brown	Black	Matte Gray	Flat White	Silver	Camo Bronze	Desert Tan	Dark Slate

DESIGNER SERIES FIXTURES with Integrated LEDs

Up Lights ▾

◀ QZ

Height: 6.6" (168 mm)
Diameter: 1.8" (45 mm)
LED: 1
Finish: BZ, DG, WI, SB, FB, FW⁺, SV⁺
Material: Aluminum



◀ FB

Height: 8.1" (206 mm)
Diameter: 2.5" (64 mm)
LED: 1, 3
Finish: BZ, DG, WI, SB, FB, FW⁺, SV⁺
Material: Aluminum



◀ NP + color

Height: 8.4" (213 mm)
L Shroud: 10.4" (264 mm)
Diameter: 2.7" (69 mm)
LED: 3, 6, 9
Finish: BZ, DG, WI, SB, FB, FW⁺, SV⁺
Material: Aluminum

◀ QB

Height: 5.0" (127 mm)
Width: 2.9" (75 mm)
Depth: 2.2" (55 mm)
LED: 1
Finish: BZ, DG, WI, SB, FB, FW⁺, SV⁺
Material: Aluminum



◀ PB + color

Height: 6.0" (152 mm)
Width: 3.9" (98 mm)
Depth: 2.2" (56 mm)
LED: 1, 3
Finish: AB, AT, BS, NP[†], BZ, DG, WI, SB, FB, FW⁺, SV⁺
Material: Brass or Aluminum



◀ LC + color

Height: 6.5" (165 mm)
Width: 4.5" (114 mm)
Depth: 3.0" (76 mm)
LED: 3, 6, 9
Finish: AB, AT, BS, NP[†], BZ, DG, WI, SB, FB, FW⁺, SV⁺
Material: Brass or Aluminum

◀ FR + color

Height: 6.1" (155 mm)
L Shroud: 7.0" (178 mm)
Diameter: 2.0" (50 mm)
LED: 1, 3
Finish: CU, AB, AT, NP[†]
Material: Copper/Brass



◀ NR + color

Height: 6.1" (155 mm)
L Shroud: 7.4" (188 mm)
Diameter: 2.5" (64 mm)
LED: 3, 6, 9
Finish: CU, AB, AT, NP[†]
Material: Copper/Brass

◀ CC + color

Height: 6.3" (160 mm)
L Shroud: 7.2" (183 mm)
Diameter: 1.6" (41 mm)
LED: 1, 3
Finish: AB, AT, BS, NP[†]
Material: Brass



◀ VS + color

Height: 7.5" (191 mm)
L Shroud: 8.2" (208 mm)
Diameter: 2.5" (64 mm)
LED: 3, 6, 9
Finish: AB, AT, BS, NP[†]
Material: Brass

Down Lights ▾

◀ QT

Length: 6.8" (173 mm)
Diameter: 2.1" (53 mm)
LED: 1
Finish: BZ, DG, WI, SB, FB, FW⁺, SV⁺
Material: Aluminum



◀ JB + color

Length: 10.4" (264 mm)
Diameter: 2.6" (66 mm)
LED: 1, 3
Finish: BZ, DG, WI, SB, FB, FW⁺, SV⁺
Material: Aluminum



◀ DE + color

Length: 11.7" (297 mm)
Diameter: 3.0" (76 mm)
LED: 3, 6, 9
Finish: BZ, DG, WI, SB, FB, FW⁺, SV⁺
Material: Aluminum

Down Lights ▼



◀ LE

Height: 3.1" (79 mm)
Diameter: 1.6" (41 mm)
LED: 1
Finish: AB, AT, CU, NP[†], BZ, DG, WI, SB, FB, FW[†], SV[†]
Material: Aluminum or Copper/Brass



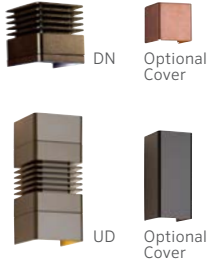
◀ VE + color

Height: 4.3" (109 mm)
Diameter: 2.3" (58 mm)
LED: 1, 3
Finish: AB, AT, BS, CU, NP[†], BZ, DG, WI, SB, FB, FW[†], SV[†]
Material: Aluminum or Copper



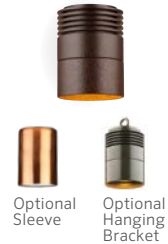
◀ QL

Height: 2.3" (58 mm)
Width: 1.5" (38 mm)
Depth: 2.2" (56 mm)
LED: 1
Finish: BZ, DG, WI, SB, FB, FW[†], SV[†]
Material: Aluminum



◀ NL + color

Height: 3.3" (84 mm)
Width: 3.2" (81 mm)
LED: 3, 6, 9
Finish: AB, AT, BS, CU, NP[†], BZ, DG, WI, SB, FB, FW[†], SV[†]
Material: Brass or Aluminum



◀ PS + color

Height: 4.2" (107 mm)
Diameter: 3.0" (76 mm)
LED: 3, 6, 9
Finish: AB, AT, BS, NP[†], CU, BZ, DG, WI, SB, FB, FW[†], SV[†]
Material: Brass or Aluminum



◀ SD + color

Height: 6.9" (175 mm)
Depth: 4.0" (102 mm)
LED: 3, 6, 9
Finish: BZ, DG, WI, SB, FB, FW[†], SV[†]
Material: Aluminum



◀ ZW + color

Height: 3.9" (99 mm)
Diameter: 2.3" (58 mm)
Base Diameter: 4.7" (119 mm)
LED: 1, 3
Finish: BZ, WI, FB, CU, DG, SS, FW[†], SV[†]
Material: Aluminum, Stainless Steel, or Copper



◀ ZC + color

Height: 5.5" (140 mm)
Diameter: 2.1" (53 mm)
Base Diameter: 4.7" (119 mm)
LED: 1, 3
Finish: BZ, WI, FB, CU, DG, SS, FW[†], SV[†]
Material: Aluminum or Copper



◀ VC

Height: 3.3" (83 mm)
Diameter: 2.4" (62 mm)
LED: 1
Finish: FW
Material: Aluminum



◀ RC + color

Depth: 3.5" (89 mm)
Width: 5.5" (140 mm)
LED: 1, 3, 6, 9
Finish: BZ, DG, WI, SB, FB, FW[†], SV[†]
Material: Aluminum

Wall Lights ▼



◀ LF + color

Height: 0.9" (22 mm)
Width: 6.7" (170 mm)
Depth: 1.0" (25 mm)
LED: 1
Finish: AB, AT, BS, CU, SS, BZ, DG, WI, SB, FB, FW[†], SV[†]
Material: Brass or Aluminum
Bracket: Stainless Steel



◀ MS

Diameter: 3.7" (94 mm)
Depth: 2.0" (51 mm)
LED: 1
Finish: AB, AT, BS, NP[†], BZ, DG, WI, SB, FB, FW[†], SV[†]
Material: Aluminum or Brass



◀ SL-3/SL-5 + color

Height: SL-3: 4.9" (125 mm)
 SL-5-CV: 4.1" (101 mm)
Width: SL-3: 3.2" (81 mm)
 SL-5-CV: 5.4" (137 mm)
LEDs: 1, 3
Finish: BZ, DG, WI, SB, FB, FW[†], SV[†]
Material: Aluminum



◀ PO

Height/Width: 2.5" (64 mm)
LED: 1
Finish: AB, AT, BS, NP[†], BZ, DG, WI, SB, FB, FW[†], SV[†]
Material: Brass or Aluminum



◀ MO + color

Height/Width: 3.3" (84 mm)
LED: 1, 3
Finish: AB, AT, BS, NP[†], BZ, DG, WI, SB, FB, FW[†], SV[†]
Material: Brass or Aluminum



◀ VO

Height/Width: 1.9" (48 mm)
LED: 1
Finish: SS
Material: Stainless Steel

[†] Items in this finish are not returnable.



◀ CP/LM

Face Width:
 CP: 5.0" (127 mm)
 LM: 9.0" (229 mm)
Face Height: 3.5" (89 mm)
LED: 1 (CP); 2 (LM)
Finish: AB, AT, CU, NP[‡], BZ, DG, WI, SB, FB, FW[‡], SV[‡]
Material: Copper



◀ UN/PD

Face Width:
 UN: 5.2" (91 mm)
 PD: 9.0" (229 mm)
Face Height: 3.5" (89 mm)
LED: 1 (UN); 2 (PD)
Finish: AB, AT, BS, NP[‡], BZ, DG, WI, SB, FB, CB, DT, FW[‡], SV[‡]
Material: Brass or Composite



◀ HS + color

Face Height: 2.3" (58 mm)
Face Width: 8.0" (203 mm)
Depth: 0.9" (23 mm)
LED: 2
Finish: BZ, DG, WI, SB, FB, FW[‡], SV[‡]
Material: Aluminum

Path/Area Lights ▶



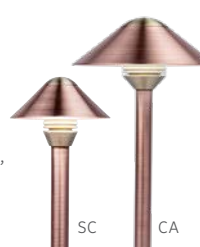
◀ HC/JS + color

Diameter:
 HC: 3.6" (92 mm)
Riser Required: P⁺
 JS: 6.3" (160 mm)
Riser Required: G⁺
LED: HC: 1; JS: 1, 3
Finish: AB, AT, CU, NP[‡], BZ, DG, WI, SB, FB, FW[‡], SV[‡]
Material: Copper/Brass



◀ PF/DM + color

Diameter:
 PF: 5.0" (127 mm)
Riser Required: P⁺
 DM: 7.1" (180 mm)
Riser Required: G⁺
Finish: AB, AT, CU, NP[‡], BZ, DG, WI, SB, FB, FW[‡], SV[‡]
LED: PF: 1; DM: 1, 3
Material: Copper/Brass



◀ SC/CA + color

Diameter:
 SC: 4.7" (119 mm)
Riser Required: P⁺
 CA: 7.6" (193 mm)
Riser Required: G⁺
LED: SC: 1; CA: 1, 3
Finish: AB, AT, CU, NP[‡], BZ, DG, WI, SB, FB, FW[‡], SV[‡]
Material: Copper/Brass



◀ PL/TM + color

Diameter:
 PL: 6.0" (152 mm)
 TM: 5.0" (127 mm)
Riser Required: A⁺
LED: 1, 3
Finish: BZ, DG, WI, SB, FB, FW[‡], SV[‡]
Material: Aluminum



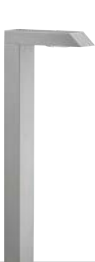
◀ RW + color

Height: 7.6" (193 mm)
Diameter: 4.1" (103 mm)
LED: 3, 6, 9
Finish: BZ, DG, WI, SB, FB, SV[‡], FW[‡], SV[‡]
Material: Aluminum



◀ PM + color

Height:
 14.0" (356 mm)
 XT: 18.5" (470 mm)
Diameter: 2.5" (64 mm)
LED: 1, 3, 6, 9
Finish: BZ, DG, WI, SB, FB, SV[‡], FW[‡], SV[‡]
Material: Aluminum



◀ M-PL + color

Height: 21.3" (541 mm)
Diameter: 7.4" (187 mm)
LED: 1
Finish: BZ, DG, WI, SB, FB, FW[‡], SV[‡]
Material: Aluminum



◀ M-PJ + color

Height: 22.1" (561 mm)
Width: 2.8" (71 mm)
Depth: 7.4" (187 mm)
LED: 1, 3, 6
Finish: BZ, DG, WI, SB, FB, FW[‡], SV[‡]
Material: Aluminum



◀ M-PK + color

Height: 22.5" (572 mm)
Width: 2.2" (56 mm)
Depth: 7.4" (187 mm)
LED: 1, 3
Finish: BZ, DG, WI, SB, FB, FW[‡], SV[‡]
Material: Aluminum



◀ M-PZ + color

Height: 22.1" (561 mm)
Width: 2.5" (64 mm)
Depth: 7.4" (187 mm)
LED: 1, 3
Finish: BZ, DG, WI, SB, FB, FW[‡], SV[‡]
Material: Aluminum



◀ TD + color

Height: 16.2" (411 mm)
 XT: 29.5" (749 mm)
Diameter: 5.0" (127 mm)
LED: 1, 3, 6, 9
Finish: AB, AT, CU, NP[‡], BZ, DG, WI, SB, FB, FW[‡], SV[‡]
Material: Copper/Brass



◀ FG + color

Height: 18.0" (457 mm)
Diameter: 5.0" (127 mm)
LED: 1, 3, 6, 9
Finish: AB, AT, CU, NP[‡], BZ, DG, WI, SB, FB, FW[‡], SV[‡]
Material: Copper/Brass

Underwater Lights ▶



◀ LP + color

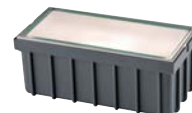
Diameter: 2.7" (69 mm)
Height: 1.9" (48 mm)
LED: 1, 3
Finish: BS
Lead: 30' (9 m) or 100' (30 m)
Material: Brass



◀ LL + color

Length: 4.0" (102 mm)
Diameter: 3.3" (84 mm)
LED: 1, 3, 6, 9
Finish: BS
Lead: 30' (9 m) or 100' (30 m)
Material: Brass

In-Grade Lights ▶



◀ HP-48 + color

Height: 3.1" (79 mm)
Width: 4.0" (102 mm)
Length: 8.0" (203 mm)
LED: 1
Finish: DS
Material: Composite

In-Grade Lights ▾

Ring (RG) Cowling (CW)



FC + color

Height: LV: 5.1" (130 mm)
 RG: 4.8" (122 mm)
 CW: 6.8" (173 mm)
 GW: 5.7" (145 mm)
Diameter: 4.0" (102 mm)
LED: 1, 3, 6, 9
Finish: AB, AT, BS, NP[†], BZ, DG, WI, SB, FB, FW[†], SV[†]
Material: Brass



KG + color

Diameter: 6.1" (155 mm)
Height: 9.2" (234 mm)
LED: 3, 6, 9
Finish: AB, AT, BS, NP[†], BZ, DG, WI, SB, FB, FW[†]
Material: Brass or Aluminum



KT + color

Height: 9.4" (240 mm)
Diameter: 7.0" (178 mm)
LED: 3
Finish: SS
Material: Stainless Steel

Specialty Lights ▾

BQ

Length: 24.0" (610 mm)
Diameter: 1.8" (45 mm)
 Head: 1.8" (45 mm)
 Base: 3.6" (94 mm)
LED: 1
Finish: SS
Material: Stainless Steel



SRP

Length: 10' (3.1 m) or 40' (12 m)
LED: Integrated
Material: Silicone



SRP ACCESSORIES

Two Jumper Cables: 3" (76 mm) and 6" (152 mm), Closed-End Connector, and Mounting Clips

STANDARD SERIES FIXTURES

Up Lights ▾

MP

Height: 6.6" (168 mm)
Diameter: 1.8" (45 mm)
Lamp: MR-11
Finish: BZ, DG, WI, SB, FB, FW[†], SV[†]
Material: Zinc



RS

Height: 6.6" (168 mm)
 L Shroud: 7.8" (198 mm)
Diameter: 2.4" (61 mm)
Lamp: MR-16
Finish: BZ, DG, WI, SB, FB
Material: Zinc



MU

Height: 7.2" (183 mm)
 L Shroud: 8.7" (221 mm)
Diameter: 2.2" (56 mm)
Lamp: MR-16
Finish: BZ, DG, WI, SB, FB, FW[†], SV[†]
Material: Aluminum

C-UL

Height: 6.5" (165 mm)
Diameter: 2.4" (61 mm)
Lamp: MR-16
Finish: AB
Material: Brass



LR

Height: 8.3" (211 mm)
Diameter: 2.5" (64 mm)
Lamp: MR-16
Finish: CU, NP[†]
Material: Copper/Brass



LO

Height: 8.4" (213 mm)
Diameter: 2.3" (57 mm)
Lamp: MR-16
Finish: BS, NP[†]
Material: Brass

WS

Height: 6.4" (163 mm)
Width: 4.0" (102 mm)
Lamp: G4
Finish: BZ, DG, WI, SB, FB
Material: Aluminum



RL

Height: 6.0" (153 mm)
Diameter: 4.0" (102 mm)
Lamp: G4
Finish: CU, NP[†], BZ, DG, WI, SB, FB, FW[†], SV[†]
Material: Copper/Brass



C-WW/C-WWL

Height: 6.5" (165 mm)
Width: C-WW: 4.0" (102 mm)
 C-WWL: 5.4" (137 mm)
Lamp: C-WW: G4; C-WWL: MR-16
Finish: AB
Material: Brass

Path/Area Lights ▾

SP/DL(-A)

Height: 15.6" (396 mm)*
Diameter: SP: 3.6" (92 mm)
 DL: 6.3" (159 mm)
Lamp: G4
Finish: AB, AT, CU, NP[†], BZ, DG, WI, SB, FB, FW[†], SV[†]
Material: Copper/Brass or Aluminum



PF/DM(-A)

Height: 15.5" (394 mm)*
Diameter: PF: 4.0" (102 mm)
 DM: 7.1" (180 mm)
Lamp: G4
Finish: CU, NP[†], BZ, DG, WI, SB, FB, FW[†], SV[†]
Material: Copper/Brass or Aluminum



SC/CA(-A)

Height: 15.4" (391 mm)*
Diameter: SC: 4.7" (119 mm)
 CA: 7.6" (193 mm)
Lamp: G4
Finish: CU, NP[†], BZ, DG, WI, SB, FB, FW[†], SV[†]
Material: Copper/Brass or Aluminum

*When specified with a 12" (300 mm) riser.
 † Items in this finish are not returnable.

Path/Area Lights ▾



◀ C-PL-4/7

Diameter:
C-PL-4: 4.3" (109 mm)
C-PL-7: 6.5" (165 mm)
Riser Diameter:
1.0" (25 mm)
Lamp: G4
Finish: AB
Material: Brass



◀ TM/PL

Diameter:
TM: 5.0" (127 mm)
PL: 6.0" (152 mm)
Lamp: G4
Finish: BZ, DG, WI, SB,
FB, FW[†], SV[†]
Material: Aluminum



◀ DS/DR

Diameter:
DS: 6.0" (152 mm)
DR: 10.0" (254 mm)
Lamp: G4
Finish: BZ, DG, WI, SB,
FB, FW[†], SV[†]
Material: Aluminum



◀ DP

Height: 13.5" (343 mm)
Diameter: 2.9" (74 mm)
Lamp: G4
Finish: CU, NP[†], BZ, DG,
WI, SB, FB, FW[†]
Material: Copper/Brass



◀ GN

Height: 22.1" (563 mm)
with 18" (450 mm) riser
Diameter: 10.0" (254 mm)
Riser Diameter:
1.25" (38 mm)
Lamp: G4
Finish: CU
Material: Copper



◀ AL

Height: 27.5" (699 mm)
Diameter: 5.6" (142 mm)
Lamp: Single Contact
Bayonet
Finish: BZ, DG, WI, SB,
FB, FW[†], SV[†]
Material: Aluminum



◀ TD

Height: 18.0" (457 mm)
XT: 29.5" (749 mm)
Diameter:
5.0" (127 mm)
Lamp: Single Contact
Bayonet
Finish: CU, NP[†], BZ, DG,
WI, SB, FB, FW[†], SV[†]
Material: Copper/Brass



◀ FG

Height: 18.0" (457 mm)
Diameter: 5.0" (127 mm)
Lamp: Single Contact
Bayonet
Finish: CU, NP[†], BZ, DG,
WI, SB, FB, FW[†], SV[†]
Material: Copper/Brass

Wall Lights ▾



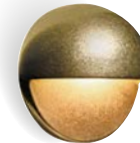
◀ LD

Height: 1.0" (25 mm)
Width: 4.8" (122 mm)
Depth: 0.8" (20 mm)
Lamp: G4
Finish: BZ, DG,
WI, SB, FB
Material: Aluminum



◀ C-LL

Height: 0.8" (20 mm)
Width: 6.9" (175 mm)
Depth: 0.8" (20 mm)
Lamp: Integrated LED
Finish: AB
Material: Brass



◀ MM

Depth: 1.8" (45 mm)
Diameter: 3.3" (83 mm)
Lamp: G4
Finish: BS, NP[†], BZ, DG,
WI, SB, FB
Material: Brass or
Aluminum



◀ UN/PD

Face Width:
UN: 5.2" (91 mm)
PD: 9.0" (229 mm)
Face Height:
3.5" (89 mm)
Lamp: G4
Finish: BS, NP[†], BZ, DG,
WI, SB, FB, CB, DT, FW[†], SV[†]
Material: Brass or Composite



◀ CP/LM

Face Width:
CP: 5.0" (127 mm)
LM: 9.0" (229 mm)
Face Height:
3.5" (89 mm)
Lamp: G4
Finish: CU, NP[†], BZ, DG, WI,
SB, FB, FW[†], SV[†]
Material: Copper



◀ CG

Face Diameter:
3.0" (76 mm)
Conduit:
Length: 3.1" (79 mm)
Diameter: 2.0" (51 mm)
Lamp: MR-8
Finish: BS
Material: Brass

Down Lights ▾



◀ TS

Length: 6.5" (165 mm)
Diameter: 2.4" (61 mm)
Lamp: AR-11
Finish: CU, NP[†], BZ, DG,
WI, SB, FB, FW[†], SV[†]
Material: Copper or
Aluminum



◀ MD

Length: 10.5" (267 mm)
Diameter: 3.0" (76 mm)
Lamp: MR-16
Finish: BZ, DG, WI, SB,
FB, FW[†], SV[†]
Material: Aluminum



◀ C-DL

Length: 10.7" (272 mm)
Diameter: 2.9" (73 mm)
Lamp: MR-16
Finish: AB
Material: Brass

Down Lights ▼



◀ LS/VL

Height:
 LS: 3.0" (76 mm)
 VL: 4.7" (119 mm)
Diameter:
 LS: 1.6" (41 mm)
 VL: 2.0" (51 mm)
Lamp: LS: SCB; VL: AR-11
Finish: CU, NP[†]
Material: Copper/Brass



◀ TC/CL

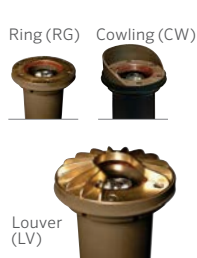
TC Square Dimensions:
 2.8" (70 mm)
CL Height: 3.5" (89 mm)
CL Diameter: 3.3" (83 mm)
Lamp: AR-11/20
Finish: CU, NP[†], BZ, DG, WI, SB, FB, FW[†], SV[†]
Material: Copper

In-Grade Lights ▼



◀ FC

Height:
 LV: 5.1" (130 mm)
 RG: 4.8" (122 mm)
 CW: 6.8" (173 mm)
Diameter: 4.0" (102 mm)
Lamp: MR-16
Finish: BS, NP[†], CB, DT
Material: Brass or Composite



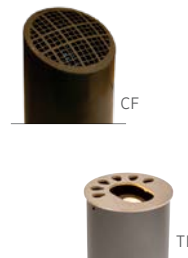
◀ RP

Height:
 LV: 9.3" (236 mm)
 RG: 9.0" (229 mm)
 CW: 11.0" (279 mm)
Diameter: 6.8" (171 mm)
Lamp: MR-16
Finish: BS, NP[†], CB, DT
Material: Brass or Composite



◀ C-IN

Height: 5.5" (128 mm)
Diameter: 3.8" (97 mm)
Lamp: MR-16
Finish: AB
Material: Brass



◀ CF/TE

Diameter: 6.1" (155 mm)
Height: 9.2" (234 mm)
Lamp:
 CF: PAR-36
 TE: MR-16
Finish:
 CF: CB, DT
 TE: BS, NP[†]
Material: Composite

LIGHTING CONTROL

Transformers and Controllers ▼



◀ EX

Height: 12.0" (305 mm)
Width: 5.0" (127 mm)
Depth: 5.5" (140 mm)
Wattage: 150
Finish: SS, M



◀ PX

Height: 13.5" (343 mm)
Width: 7.5" (191 mm)
Depth: 6.0" (152 mm)
Wattage: 300, 600, 900
Finish: SS, FW[†], BZ, DG, WI, SB, FB



◀ DX

Height: 11.4" (289 mm)
Width: 7.1" (181 mm)
Depth: 5.0" (128 mm)
Wattage: 150, 300
Finish: SS, M

Luxor Controllers ▼



◀ LUXOR

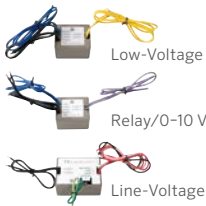
Height: 13.0" (330 mm)
Width: 8.0" (203 mm)
Depth: 5.0" (127 mm)
Wattage: 300
Finish: SS, M



◀ LUXOR SATELLITE

Height: 13.0" (330 mm)
Width: 8.0" (203 mm)
Depth: 5.0" (127 mm)
Wattage: 300
Finish: SS, M

Luxor Accessories ▼



◀ LUXOR CUBE

With the Luxor CUBE, the Luxor Controller can zone and dim other brands of low-voltage and line-voltage light fixtures



◀ LAM

Luxor Light Assignment Module for use with the Luxor App and Luxor Cloud Control



◀ WI-FI MODULE

Luxor Wi-Fi Module for use with the Luxor App

LED Lamps ▼



MR-16 LED MR-16 ZD

◀ MR-16

Base: GU5.3
Beam Angles: 3
Max Lumens: 450 lm



35 W

◀ G4

Base: T3
Max Lumens: 123 lm



20 W



MR-11

◀ MR-11

Base: GU4
Max Lumens: 176 lm



MR-16 ECO



10 W



PAR-36

◀ PAR-36

Base: G53 screw pin
Max Lumens: 860 lm

[†] Items in this finish are not returnable.

FXLuminaire

A Hunter Industries Company

Our mission is to create the most energy-efficient lighting products in the world while maintaining the highest level of quality and reliability. In every instance we will back our innovations with the unwavering support our customers need to succeed.



Gregory R. Hunter, CEO of Hunter Industries



Gene Smith, President, Landscape Irrigation and Outdoor Lighting

Website fxl.com | **Customer Support** 1-760-744-5240 | **Technical Service** 1-760-591-7383