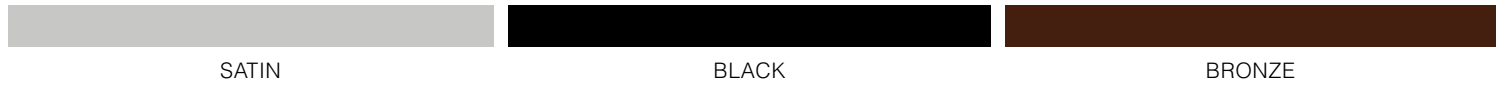
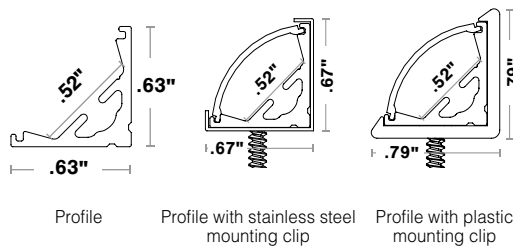


The ARKA is a 45-degree angled LED extrusion with a curved lens that produces a wide 130-degree beam angle for cove lighting applications. It is available in satin, black, and bronze finishes with two mounting hardware options. Lens options include clear, frosted, polar, and diffused. Combine ARKA with WhiteOptics to increase light output between 2-20%.

Finish

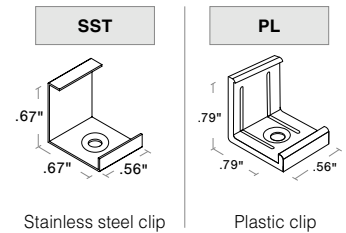


Dimensions



Mounting

2 clips provided for 4' or less; 4 clips provided for greater than 4'



Part Number Builder

Product	Finish	Mounting	Lens	Type	Finished Fixture Length (in)
<input type="text"/> ^ ARKA ARKA-WO	<input type="text"/> ^ ST BK BZ	<input type="text"/> ^ SST PL	<input type="text"/> ^ CL FR PR DF	<input type="text"/> ^ S1 Single (Input Only) P1 Pass through (Input/Output) NI Not installed	<input type="text"/> ^ 1" increments from 1" - 98.43" Tolerance +0.0"/-0.5"

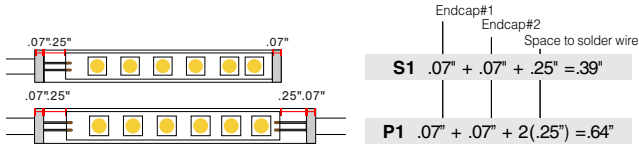
- If selecting WhiteOptics option, select **ARKA-WO** for Product

- Field modifications must comply with Q-Tran's installation methods otherwise warranty is null & void
- UL Listed when assembled with STRIP LEDs at Q-Tran
- Corner/surface mount
- Suitable for installation in the storage area of a clothes closet when assembled as a fixture at Q-Tran facility (Not applicable for encapsulation or LED strips exceeding 4W/ft)

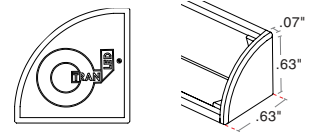
Compatible Strips

	STATIC WHITE (SW)	STATIC WHITE INDIVIDUALLY ADDRESSABLE (SW-IA)	STATIC WHITE STOCKING DISTRIBUTOR (SD-SW)	STATIC WHITE HIGH EFFICACY (SW-HE)	STATIC WHITE HIGH EFFICACY PLUS (SW-HE+)	DYNAMIC WHITE (DW)	DYNAMIC WHITE HIGH EFFICACY (DW-HE)	STATIC COLOR (SC)	WARM DIM (WD)	RGB	RGBW	RGBW HIGH EFFICACY (RGBW-HE)
	1.5W/ft 3.0W/ft 4.0W/ft 5.0W/ft 6.0W/ft	5.0W/ft	2.0W/ft 4.0W/ft 6.0W/ft	1.5W/ft 3.0W/ft 6.0W/ft 9.0W/ft	3.0W/ft 6.0W/ft	6.0W/ft	3.0W/ft 5.0W/ft 8.0W/ft	5.0W/ft	6.0W/ft	6.0W/ft	6.0W/ft	4.0W/ft 8.0W/ft
DRY	✓	✓	✓	✓ <small>Not compatible with 9.0</small>	✓	✓	✓ <small>Not compatible with 8.0</small>	✓	✓	✓	✓	✓ <small>Not compatible with 8.0</small>
DMP	✓ <small>Not compatible with 6.0</small>			✓ <small>Not compatible with 9.0</small>		✓	✓ <small>Not compatible with 8.0</small>	✓		✓	✓	✓ <small>Not compatible with 8.0</small>
ENC												
WET	✓ <small>Not compatible with 6.0</small>		✓ <small>Not compatible with 6.0</small>		✓	✓	✓ <small>Not compatible with 8.0</small>	✓	✓	✓		✓ <small>Not compatible with 8.0</small>

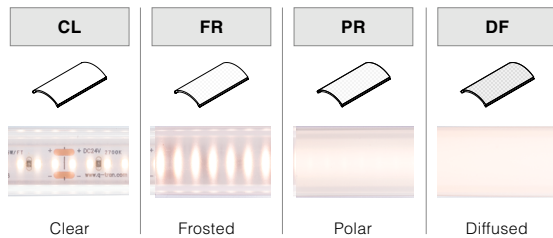
Length (in) Add to nominal LED length for fixture length



End Caps



Lens with LED visibility



WhiteOptics Photometrics

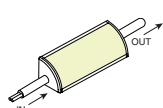
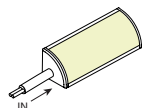
[Calculated L70(6k) - 70000 hours]
Tested with SW24/5.0-DRY-30

	ARKA LM/FT		ARKA-WO LM/FT		ARKA-WO Lumen Increase	
	Satin	Black/Bronze	Satin	Black/Bronze	Satin	Black/Bronze
Clear	432	410	439	438	2%	7%
Frosted	426	404	431	425	1%	5%
Polar	391	371	413	408	6%	10%
Diffused	361	320	390	385	8%	20%

Type

SINGLE (Input only)

PASS THROUGH (Input/Output)



End feed

End feed

Cut Off



130°

Wire Way

