



WELCOME

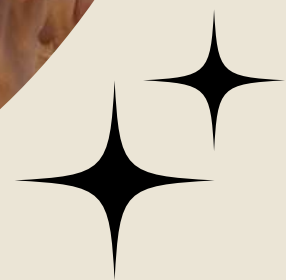


HEY THERE,  
*im Kaitlin*

---

I'M HERE TO BRING A BIT OF EXTRA MAGIC TO YOUR  
SPECIAL DAY. LIVE PAINTING IS A UNIQUE WAY OF  
REMEMBERING YOUR EVENT AND IT'S SOMETHING YOU  
CAN KEEP FOREVER.

WITH YEARS OF EXPERIENCE AS AN ARTIST, I  
GUARANTEE YOU A UNIQUE EXPERIENCE AND A  
ONE-OF-A-KIND PIECE OF ARTWORK.





FOR THE UNIQUE • ROMANTIC







## THE PROCESS - FIRST STEPS

Congrats! You've taken the first step to booking a live painter for your wedding or event.

Take a look through the rest of this guide and contact me if you have any questions or would like to go ahead and book with me.

When you've decided to move forward with booking, I'll send you to my scheduling site.

Through my scheduling site, you'll fill out a form with all the info I'll need. There is also a terms and conditions section you have to agree to in order to book. You'll have the option to pay the 25% deposit to secure the date, or go ahead and pay in full. Any remaining balance and travel fees will be charged a month before the event (or reach out if you'd like to set up a payment plan).

Then you're on the books! I'll reach out via the contact info you provide if I need any more info.



# THE PROCESS - THE DAY OF



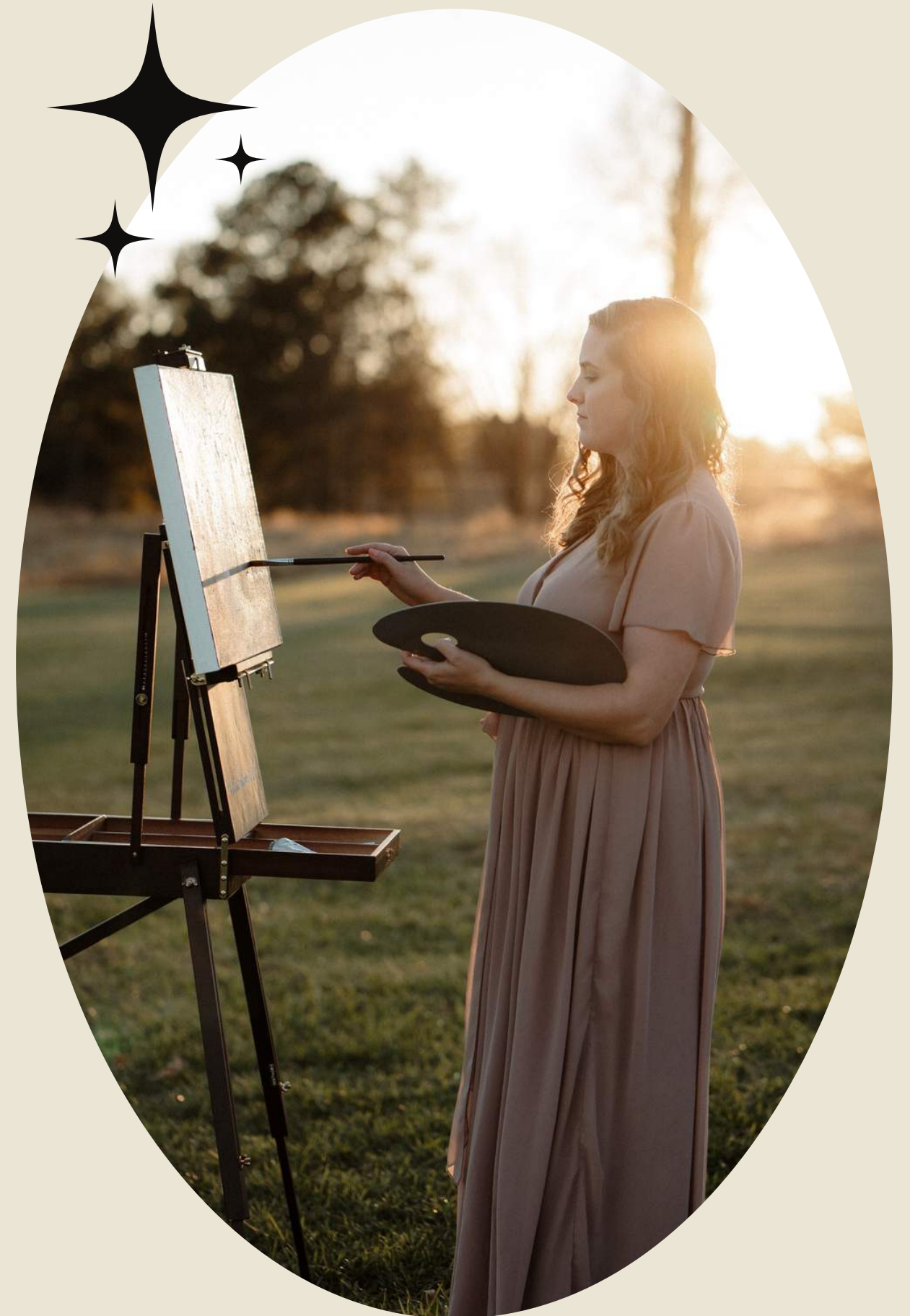
I'll arrive about 2 hours before the start of the ceremony or the reception (whichever moment you'd like to be painted) to set up and get started on sketching/painting the background.

I'll be taking photos and videos before and throughout the event to make sure I have references to look at while working on the painting.

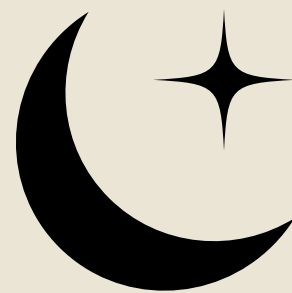
I'll continue to paint throughout the event. If guests are moved to a different location (ex. from ceremony space to a different reception space) I'll move too, so your guests can continue to watch the painting unfold.

In some cases, you will be able to take home the completed painting the night of the event, but this is not guaranteed. If I do finish the painting, I'll coordinate with you or your planner on how the painting will be getting home to you.

If additional time is needed I will bring it home to complete in my studio. Please allow 4-8 weeks for completion and the painting will be shipped to you at no additional cost.









# PRICING + PACKAGES







## WATERCOLOR

*packages*

16X20 INCH - \$1500

18X24 INCH - \$1700

22X30 INCH - \$2000

INCLUDES 6 HOURS OF PAINTING ON-SITE  
AND LIVE AT YOUR EVENT AND AN  
ADDITIONAL 2 STUDIO HOURS IF NEEDED  
(UNFRAMED)

ALL OPTIONS INCLUDE UP TO FIVE (5) DETAILED SUBJECTS. FACELESS OR BACK OF HEAD SUBJECTS  
ARE ALSO INCLUDED. ADDITIONAL DETAILED SUBJECTS ARE AVAILABLE AT EXTRA COST.



## ACRYLIC

*packages*

16X20 INCH - \$1900

18X24 INCH - \$2200

22X28 INCH - \$2600

24X36 INCH - \$3000

INCLUDES 6 HOURS OF PAINTING ON-SITE  
AND LIVE AT YOUR EVENT AND AN  
ADDITIONAL 4 STUDIO HOURS IF NEEDED  
(READY TO HANG)



# SIZING ✨

16X20  
INCHES

22X30  
INCHES

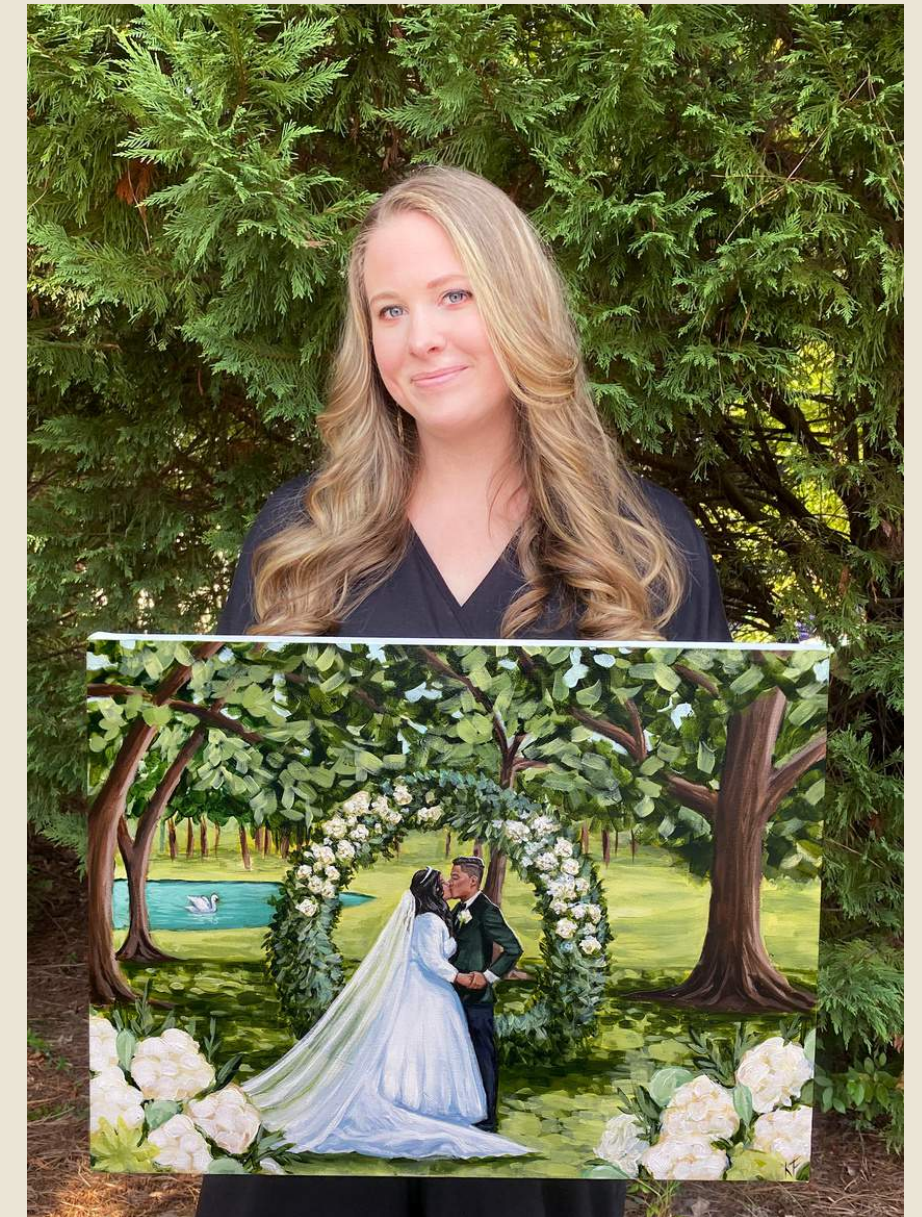
"WHAT SIZE SHOULD I CHOOSE? "

I suggest choosing size based on what you plan to do with the painting. If you want this to be a statement piece over a couch or bed, I suggest going larger.

18X24  
INCHES

24X36  
INCHES

Vertical or horizontal orientation is determined on-site by the artist unless specified otherwise by client



18X24 INCH PAINTING FOR SCALE



# WATERCOLOR *vs* ACRYLIC ✨

Style is light and airy

Painted on archival watercolor paper

Needs to be framed under glass

More likely to be finished on-site especially if you choose a smaller size



Style allows for dark and moody colors

Painted on stretched canvas

Can be hung as-is without a frame

Takes more time and is almost guaranteed to be taken back to be finished in studio



MORE PAINTING EXAMPLES:  
[HTTPS://KAITLINFUNKER.COM/GALLERIES](https://kaitlinfunker.com/galleries)



# TRAVEL FEES



Package pricing does not include travel costs.

Anywhere within 2 hours drive of Raleigh, North Carolina is no additional cost.

2-5 hours drive outside of Raleigh, NC I would need to be compensated for gas and hotel room.

Anywhere 5 hours or more outside of Raleigh, NC I would need to be compensated for a flight, hotel room, and any additional transportation.

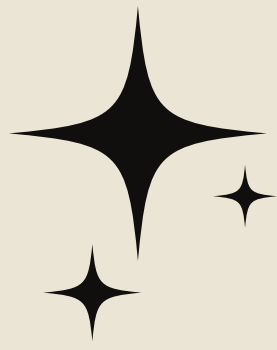
I will book any flights or accommodations myself and send these charges along with the remainder of the package price a month prior to the event.

You can contact me for a quote on travel fees for your event.

I am willing to travel anywhere in the world!









# FAQ'S



## I'M READY TO BOOK, WHAT NOW?

YOU CAN HEAD OVER TO MY BOOKING SITE USING THIS LINK -

[HTTPS://APP.SQUARESPACESCHEDULING.COM/SCHEDULE.PHP? OWNER=23442148](https://app.squarespacescheduling.com/schedule.php?owner=23442148)

SELECT YOUR DATE, FILL OUT THE FORM, SIGN THE AGREEMENT AND PAY THE DEPOSIT. THEN YOU'RE ON THE BOOKS!

## DO YOU TRAVEL?

I'LL TRAVEL ANYWHERE! MY PASSPORT IS UP TO DATE. PLEASE NOTE THAT THERE ARE TRAVEL FEES OUTSIDE OF A 2 HOUR DRIVE FROM RALEIGH, NC (SEE TRAVEL FEE PAGE FOR MORE INFO)

## WHO CHOOSES THE SCENE PAINTED?

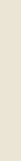
YOU DO! IF YOU'RE HAVING A HARD TIME DECIDING, I CAN HELP GUIDE YOU. AND NO NEED TO RUSH. YOU CAN BOOK FAR IN ADVANCE AND YOU CAN ALWAYS CHOOSE OR CHANGE YOUR MIND LATER ON.







## FAQ'S



### DO YOU NEED ANYTHING FROM THE VENUE?

NO, I'LL BRING ALL THE SUPPLIES I NEED. AND IF I NEED ANYTHING ELSE, I'LL REACH OUT TO YOUR PLANNER OR VENUE STAFF SO YOU DON'T EVEN NEED TO THINK ABOUT IT.

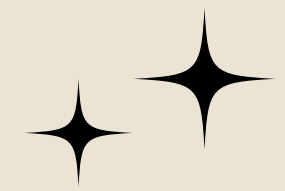
### DO I NEED TO GET MY ARTWORK FRAMED?

WATERCOLOR PAINTINGS NEED TO BE FRAMED UNDER GLASS TO ENSURE IT'S LONGEVITY. THIS IS NOT INCLUDED IN PRICING. ACRYLIC PAINTINGS CAN BE HUNG IMMEDIATELY, BUT CAN ALSO BE FRAMED FOR EXTRA FLAIR.

### ARE YOU INSURED?

YES! I HAVE LIABILITY INSURANCE WITH COVERAGE FOR UP TO \$1,000,000 AND CAN ADD VENUES TO THE CERTIFICATE IF NEEDED.





LET'S PAINT!