



SEARS' CRESCENT

BRICK & BEAM
BOUTIQUE OFFICE SPACE FOR LEASE

100 CITY HALL PLAZA, BOSTON, MA 02108

NEWMARK

SEARSCRESCENT.COM



CHEVRON
PARTNERS



100 CITY HALL PLAZA
BOSTON LANDMARK RENEWED

Built as a commercial row house in 1816, the Sears' Crescent Building is a landmark for the City of Boston. From the Brownstone cornices to the cast iron columns and red bricked facade; Sears' Crescent itself is a cherished cultural heritage accented by tasteful renewals. Its architectural features have been lovingly preserved and restored in all their grandeur, ensuring that this property will remain a sought after destination for the next generation of working Bostonians.



Second floor west suite conference room

CAREFULLY DESIGNED & RENOVATED WITH
TODAY'S MODERN WORK FORCE IN MIND

While maintaining its historic charm, Sears' Crescent has been updated to include imported oak wood flooring, Italian kitchens, and glass partitions.



CENTER OF THE NEW CITY HALL PLAZA

Sears' Crescent is located in Boston's Government Center area. Sitting directly across from City Hall Plaza and between Downtown Boston, Beacon Hill and the North Station neighborhoods, this location is in the middle of it all. Accessible via all five subway lines and the commuter rail, Sears' Crescent is convenient regardless of which direction you come from.

The newly renovated City Hall Plaza provides new seating and gathering areas, a public art space and will host events up to 20,000 people.



- 01 MIN WALK TO GOVERNMENT CENTER MBTA with access to Blue & Green lines
- 03 MIN WALK TO STATE STREET MBTA with access to Orange & Blue lines
- 06 MIN WALK TO PARK STREET MBTA with access to Red & Green lines
- 02 STOPS MBTA RIDE FROM KENDALL SQUARE

- 04 STOPS MBTA RIDE FROM HARVARD SQUARE & COPLEY SQUARE
- 10 MIN WALK TO SOUTH STATION with access to Red line & Commuter Rail
- 10 MIN DRIVE TO LOGAN AIRPORT

COLOR KEY

- Retail
- Restaurants
- Fitness
- Historic
- Office Towers
- Hotels



SEARS' CRESCENT OFFICE FEATURES

3,044 - 8,440 RSF
FLOORPLATES

FLEXIBLE OFFICE LAYOUTS

With options for private offices or huddle rooms, and space for reception areas, open desk seating, or collaboration space.

IMPORTED ITALIAN MATERIALS*

Including kitchen cabinetry, oak wood flooring, and glass partitions by Adige Design.

FRAMELESS GLASS CONFERENCE ROOMS*

With exposed brick & beam structure.

BEAUTIFULLY RENOVATED COMMON LOBBY

With Onyx wall structure, exposed brick, seating area, and Dacryl elevator cabs and controls.

*Third and fifth west office suites only.



THIRD FLOOR WEST SUITE

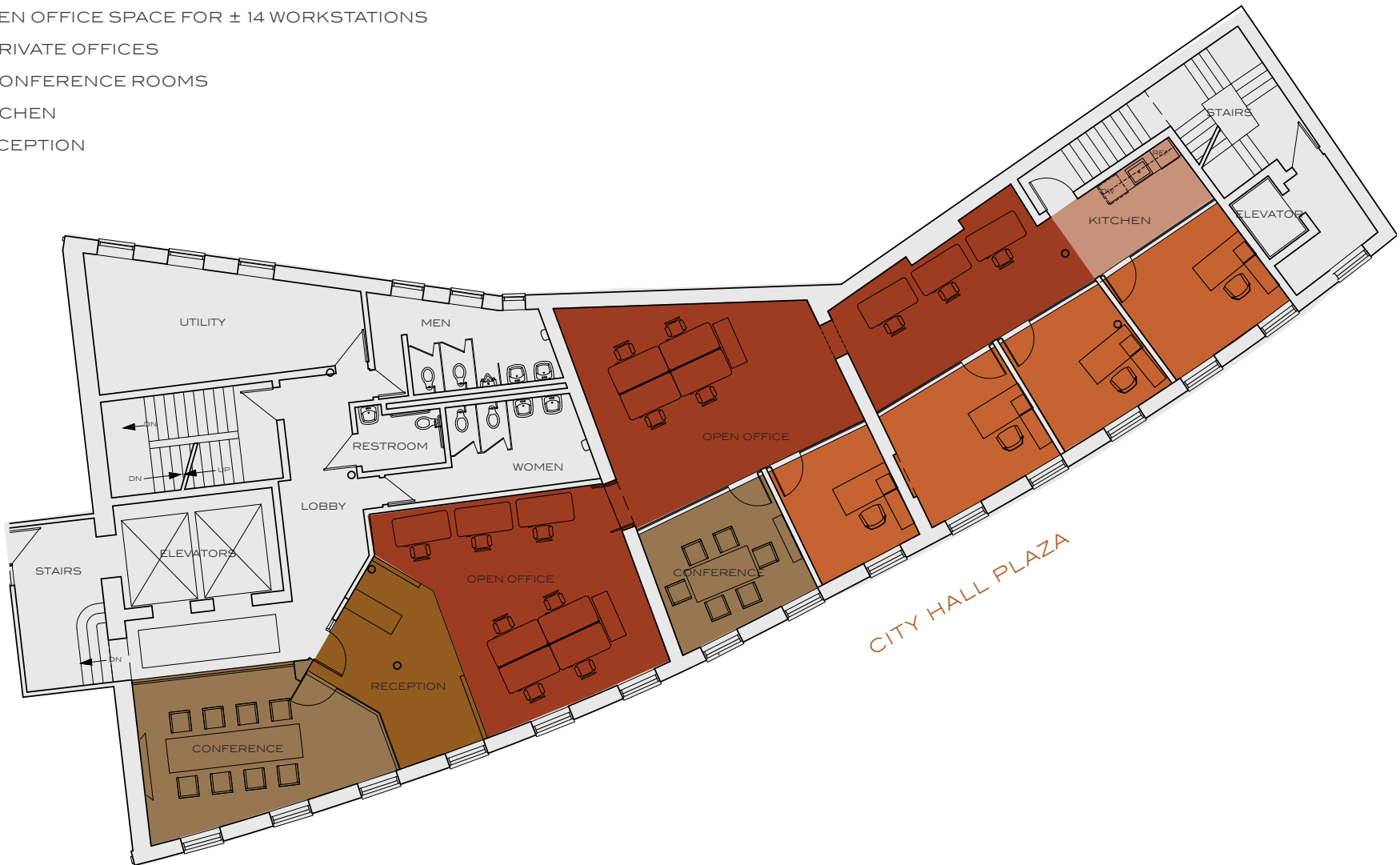
3RD FLOOR

WEST SUITE

3,044 RSF | OCCUPANCY: ± 18

AVAILABLE NOW
UNFURNISHED

- OPEN OFFICE SPACE FOR ± 14 WORKSTATIONS
- 4 PRIVATE OFFICES
- 2 CONFERENCE ROOMS
- KITCHEN
- RECEPTION



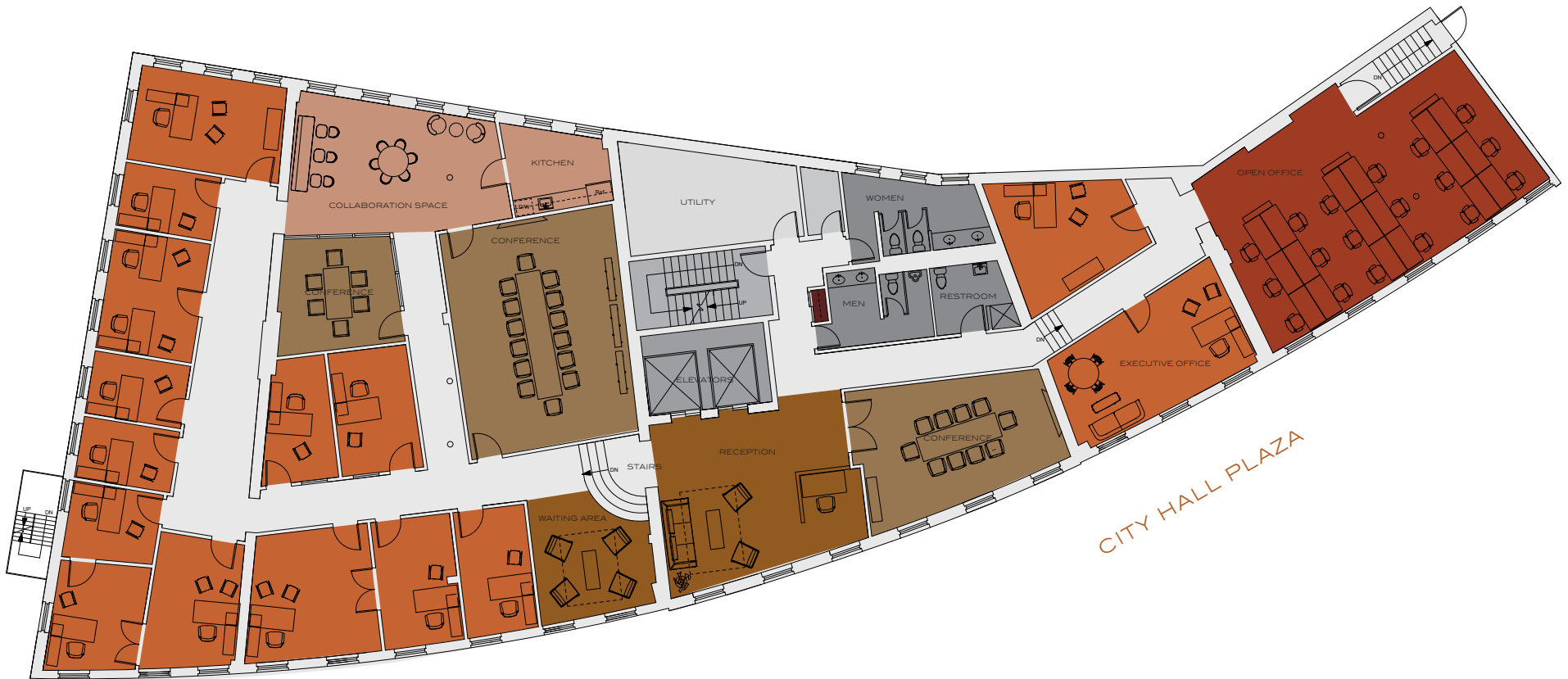
4TH FLOOR

TEST FIT A

8,440 RSF | OCCUPANCY: ± 35

AVAILABLE NOW
UNFURNISHED

- OPEN OFFICE SPACE FOR ± 18 WORKSTATIONS
- ± 15 PRIVATE OFFICES
- 3 CONFERENCE ROOMS
- KITCHEN/COLLABORATION SPACE
- RECEPTION/WAITING AREA
- CLOSET
- RESTROOMS
- UTILITY
- STAIRS
- SHARED BUILDING ELEVATORS



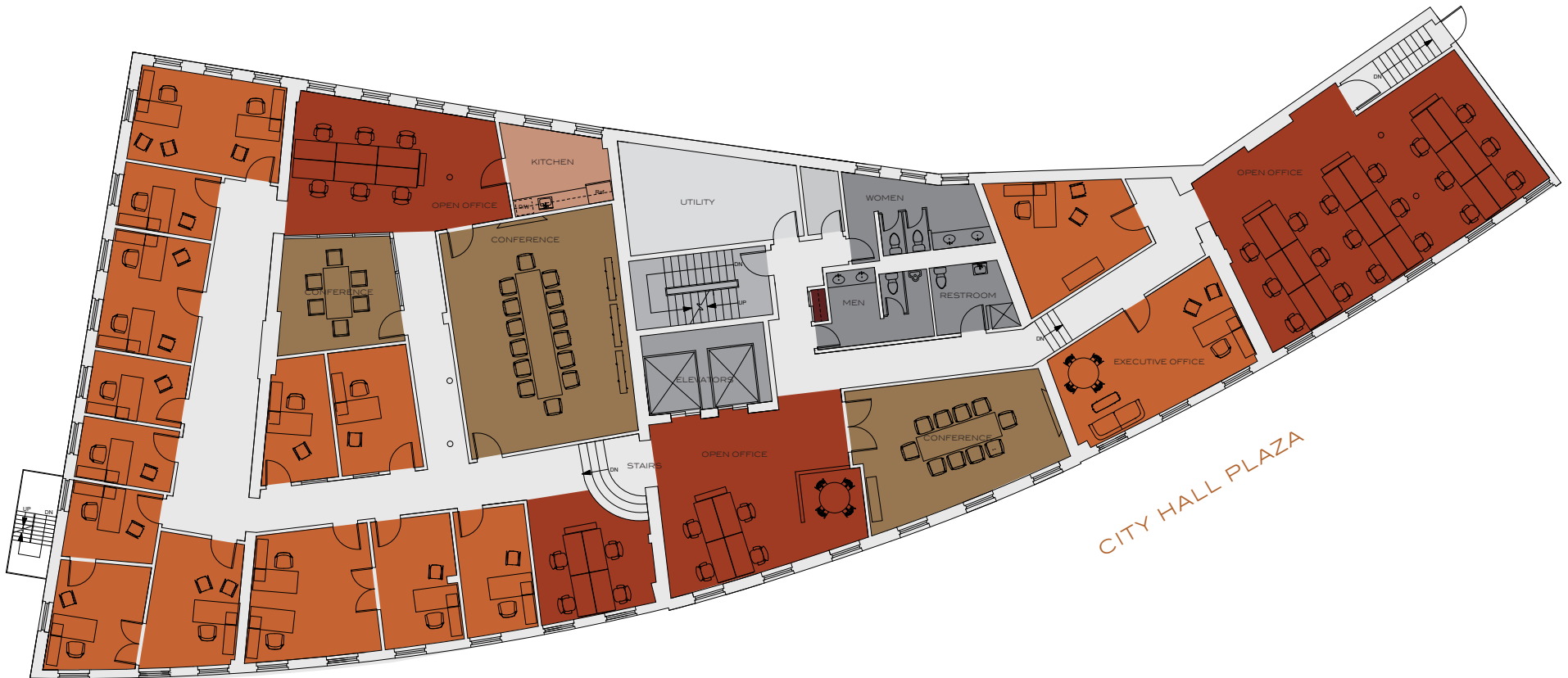
4TH FLOOR

TEST FIT B

8,440 RSF | OCCUPANCY: ± 50

AVAILABLE NOW
UNFURNISHED

- OPEN OFFICE SPACE FOR ± 32 WORKSTATIONS
- ± 15 PRIVATE OFFICES
- 3 CONFERENCE ROOMS
- KITCHEN
- CLOSET
- RESTROOMS
- UTILITY
- STAIRS
- SHARED BUILDING ELEVATORS



5TH FLOOR

WEST SUITE

3,223 RSF | OCCUPANCY: ± 17

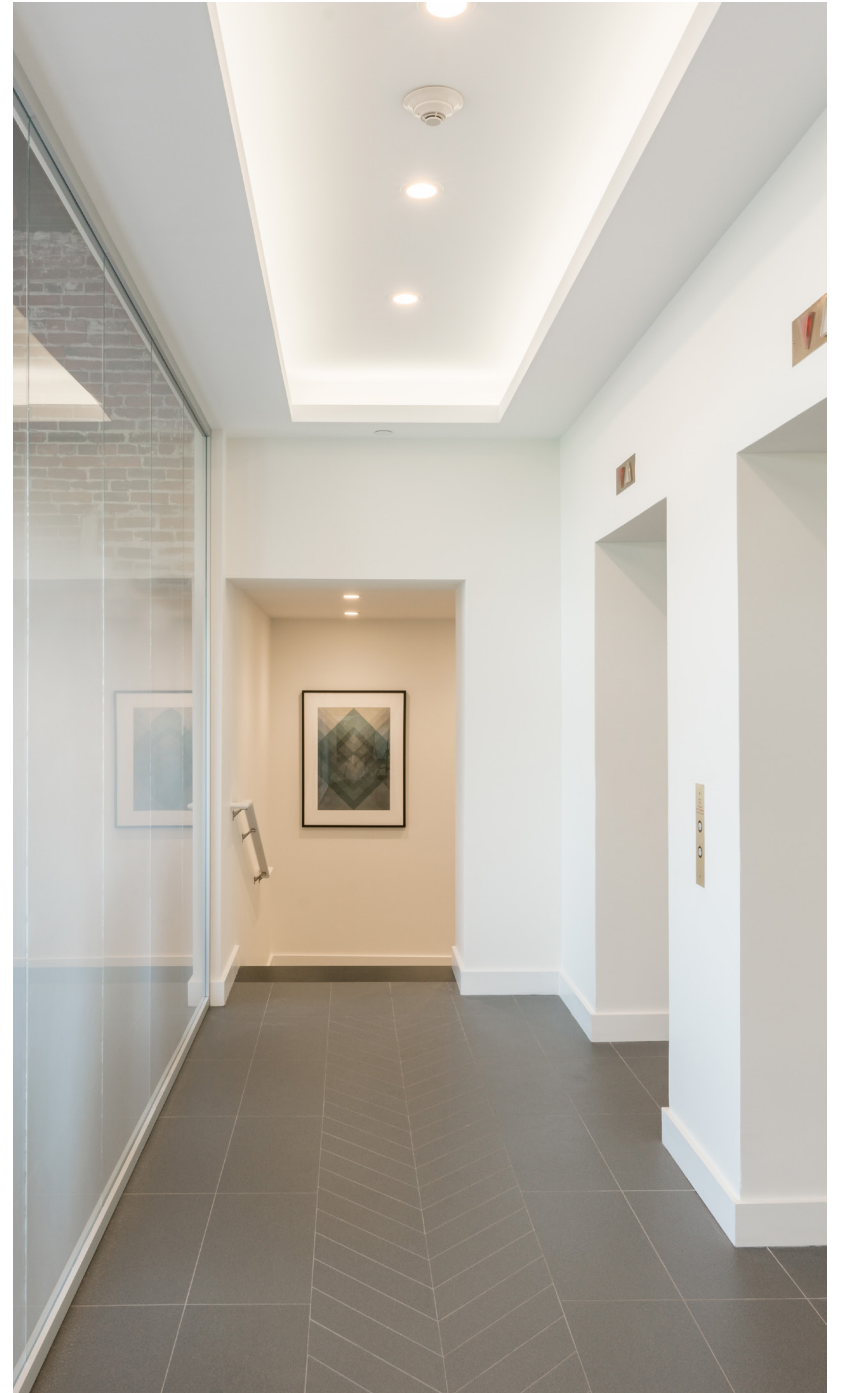
AVAILABLE Q1 2027
UNFURNISHED

- OPEN OFFICE SPACE FOR ± 12 WORKSTATIONS
- 5 PRIVATE OFFICES
- 1 CONFERENCE ROOM
- KITCHEN/ COLLABORATION SPACE
- STORAGE





FIFTH FLOOR WEST SUITE



COMMON BUILDING FEATURES INCLUDE SLATE FLOORING, TRAY CEILINGS, RENOVATED ELEVATOR CABS AND COMMON RESTROOMS.

LEASING
NEWMARK

JASON R. CAMERON 617-863-8129
BEN SUTTON 617-863-8429

JASON.CAMERON@NMRK.COM
BEN.SUTTON@NMRK.COM