

# SERVICES & PACKAGES GUIDE

A comprehensive guide to what Services and Packages Studio Rae has to offer, about the studio and how Studio Rae can deliver your dream result.

HELLO@STUDIO-RAE.COM.AU  
WWW.STUDIO-RAE.COM.AU

@\_STUDIORAE  
0447 013 838

NEWCASTLE, LAKE MACQUARIE  
HUNTER VALLEY, CENTRAL COAST

STUDIO  
RAE  
INTERIOR ————— DESIGN

# CONTENTS

- 03 Introduction to Studio Rae
- 04 Core Values
- 05 Full Package Service
- 08 Kitchen & Bathroom Service
- 10 Our Process
- 12 Consulting Packages
- 13 3D Visualisation Service
- 15 Contact Us



# STUDIO ESTD RAE MMXX



Studio Rae is a female-led Interior Design firm known for its creativity, high-end results and expertise in kitchen design. We are here to provide an individualised client approach from concept to completion to ensure our designs are created with intention, for you. Led by our core values, our attentive and detailed approach to designing your dream home, is truly why Studio Rae is recognised as a firm of excellence.

We are a bespoke studio specialising in residential Interior Design. From forever homes to someone's holiday home or even Multi Residential developments, we are here to deliver a luxury outcome that is curated with passion and understanding. Working on projects across the East Coast of NSW, we would love for you to get into contact with us to start your project.

# CORE VALUES

## CONNECTION

Whether its the connection between our clients and their homes, the connection Studio Rae has within our community or the connection and relationship we build with our clients. This is something we focus on and pride ourselves on. Building and forming those relationships is a big influence in why we do what we do.

## PSYCHOLOGY

Psychology influences the basis of what anyone does with anything in our lives. It is where we start with our design and influences how we create the space in terms of form, flow and functionality, how we choose our colours and the reasons why our designs are client centred.

## QUALITY

Quality is something that Studio Rae values from start to finish. Quality in our services, quality client relationships, quality design and quality products is where we set ourselves apart and paves the way for delivering a high-calibre design service.

## EDUCATION

Education is one of the single most important things we value, for not only ourselves but our clients as well. We are constantly learning and self investing so we are confident in our design ability and the decisions we make. In turn we educate our clients on why we have chosen specific design elements, and our community on free design insights helps them learn about something they may love.

# FULL SERVICE

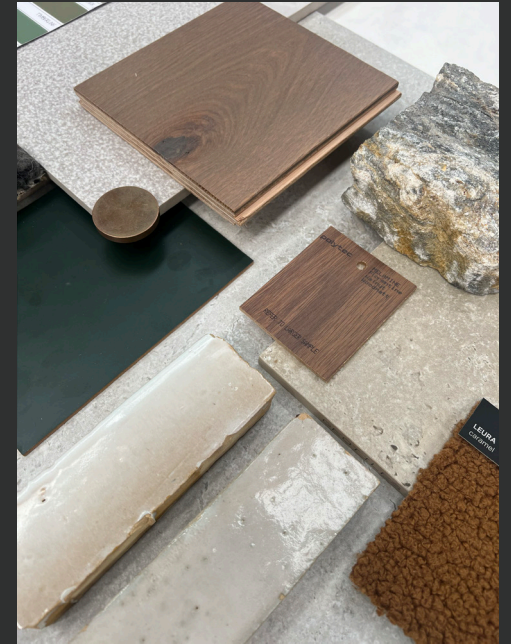
Our full service Interior Design service is a comprehensive package that includes all of the bells and whistles that come with a completely curated home interior from concept to completion.

This package caters to those who are doing a large renovation/extension or new build, that requires multiple rooms and elements to be designed and documentation delivered.

From start to finish, you will be provided a unique, personalised, professional approach where we can seamlessly collaborate and manage the interiors of your project. Nothing is left out. From vision boards in our conceptual design process to detailed design drawings, 3D visuals, sourcing and procurement and site visits. We are confident in offering you a stress-free experience with a high-end, creative and intentional finish.

We take your vision, your 'why', and our design prowess and curate show stopping spaces from Kitchens, Bathrooms, Laundries, Living, Bedrooms & more.

This is our best package to achieve a cohesive design throughout your home and you will receive a in depth, custom quote for your project as we find every project is different in many facets and pride ourself on tailoring our client experiences.



# DETAILS

## AN OVERVIEW OF WHAT IS INCLUDED:

We offer a tailored service, each enquiry will receive a custom quote and an individual list of inclusions

- Floor plans / Space planning
- Colour selections - internal / external including decorative finishes like wallpaper
- Hard material/product selections (i.e., Tiles, Stone, Fixtures, PC items)
- Soft furnishing selections (i.e., Rugs, curtains, custom fabrics, art)
- Custom joinery design (Kitchen, laundries, wardrobes, custom tv units etc)
- All accompanied specifications schedules
- Trade ready documentation including lighting plans, prelim joinery details etc
- Mood boards
- Material boards
- 2D & 3D digital perspectives and renders with proposed selections
- 2x Design meetings (if necessary)
- Furniture curation
- Access to Studio Rae's trades team - joiners, tilers, waterproofing, electricians, builder etc
- Access to Studio Rae for site visits when needed





“My husband and I have been working with Stevie for some time now, she is incredibly knowledgeable and brings thoughtfully curated designs to your home. Stevie has a talent for attention to detail bringing your vision to life. I couldn't recommend Studio Rae enough, she has made designing and styling our home and exciting and easy process.”

- SYMONDS  
\*3X FULL SERVICE CLIENT



# KITCHEN / BATHROOM



We allow for fully customisable packages, therefore you don't have to commit to a \$20,000 full house package when you just need a Kitchen and Bathroom designed. Within these custom packages you have access to everything that is in our FULL design service, on a smaller scale.

This is our best package to achieve a cohesive design throughout your home and you will receive a in depth, custom quote for your project as we find every project is different in many facets and pride ourself on tailoring our client experiences.

If you're looking for those big ticket items renovated / built on their own to maximise the value of your home, than this is the right package for you.

## WHAT ROOMS CAN BE INCLUDED?

- Kitchen / Butlers
- Bathroom
- Laundry
- Mudroom



# DETAILS

The heart of the home deserves detail, thought and meticulous execution. It falls under one of those categories that we believe is a non-negotiable in terms of engagement. Bringing on Studio Rae from the beginning will ensure your measurements and selections are considered and reflective of your goals.

The level of detail and knowledge that is required to execute a high calibre kitchen and/or design is worth the investment and confidence in your outcome. Not only so it looks perfectly aesthetic, but it also has to function like a useable space that is tailored to you.

Stevie-Rae has worked for leading companies within the kitchen and decorative surfaces industry by the likes of Polytec, Vogue Kitchens and Earp Bros, therefore has the hands on experience and knowledge to create show stopping, innovative kitchens.

**Studio Rae offers Interior Design as a package, but, you also get access to our trades team, offering you a complete start to finish comprehensive service. We design, implement and construct.**

- ✓ Joiner
- ✓ Waterproofer
- ✓ Tiler
- ✓ Builder
- ✓ Plasterer
- ✓ Plumber
- ✓ Electrician
- ✓ Painter
- ✓ Flooring installer

# OUR PROCESS

01

## DISCOVERY & CONSULTATION

Once you have booked your discovery call with Studio Rae we can have a chat about what you're looking for in our services. We then will book an onsite Initial Consultation to go into more detail about the process, and have a look at the existing space and discuss your expectations. This will give us an insight into what we will need to do as well as if we can fit your project in around your time frames. This allows you to ask any initial questions you may have to ensure you are making an informed decision.

02

## CONCEPT DEVELOPMENT

Once you're happy with our services and contracts have been signed and returned we start on our concept development. This is where we curate the overall vision, feeling and direction of the project. We create a presentation through visual imagery and sketches to present our ideas. This could include rough sketched concept drawings of particular elements and joinery, moodboards and colour palettes. This will be presented to you for approval, and once signed off we move to our next phase.

03

## DESIGN & MATERIALITY

This phase is our biggest, and attention to detail is how we execute the visual and spatial elements to be reflective of your individual circumstances. Floor Plans, 3D visuals, material boards, sourcing and procurement. You will see your project start to come to life. Detailed documentation is included for to handover to trades. A meeting will be held for sign off and one free revision will be included in this process. As a result of how in depth this phase is, the time frame for this is the longest.

04

## CONSTRUCTION MANAGEMENT

Although Studio Rae doesn't offer complete Project Management services, we are involved with certain aspects of overseeing the interior construction of your project, to ensure things are arriving and coming together as we have designed and specified. Think of it as quality control. This will involve site visits when necessary, tracking ordering and delivery from our suppliers, as well as being able to relieve your stress if something needs to be discussed with trades - we can be there to assist.

05

## STYLING & HANDOVER

The builders are now finished and you have an amazing space, this phase is like the cherry on top. We will come in and install what we have purchased for your space, such as your furniture or your soft furnishings like rugs and curtains. It's bringing those final pieces together. We will organise a time with you to get some photographs so we can capture how beautiful your space has come together, and pop some champagne to celebrate and enjoy your new home!



# CONSULTING PACKAGES



## 1 : 1 90 MINUTE CONSULTATION

This service is for those who have a solid vision, a half completed project, or you're someone who has a floor plan / layout issue you need refining.

Our 90 minute consultation allows you FULL access to us in an on-line zoom session where we can answer any of your questions, talk things through and offer you advice from the comfort of your own home.

We've consulted with Air BnB projects, small scale bathroom renovations - you name it - you can get that piece of mind and designer advice you're looking for.

## B2B CONSULTATION

Are you a tradie or own a custom building/development company? We would love to work with you and alleviate some of those design pressures with clients that you may face.

This frees up your time, allowing you to get back on the tools, run your business or just do what you love and have the confidence and peace of mind you are offering your clients quality design work.

We can offer you custom packages and pricing that suits your business and sets you apart from your competitors.

Get in touch for a chat, I'll bring the coffee.



# 3D VISUALISATION

Feeling overwhelmed? Worried about investing tens of thousands of dollars on something you're unsure will look good? Then I recommend this service, simply as an insurance policy on your decisions.

We are available to create individual rooms, to custom joinery pieces, to extensions and full houses. We can have a meeting, you can submit your plans and materials, and we will create a digital 3D model of your project to show you how it will look when it comes together.

Build your space with confidence. Book a discovery call to chat about how we can move forward.

This is the perfect B2B package for those designers who need to outsource.



\*Pricing will be determined by the size and detail of the project.\*

\*\*This is not a design service and Studio Rae will not select any finishes, materials or make design related decisions within this service\*\*

Stevie-Rae is an absolutely superstar designer who knows her stuff inside/out. She helped us draw up plans for our bathroom and laundry and knew exactly what would work and what wouldn't. We loved working with Stevie-Rae and wouldn't hesitate to recommend her everyone we know!

- HAGAN



# CONTACT US

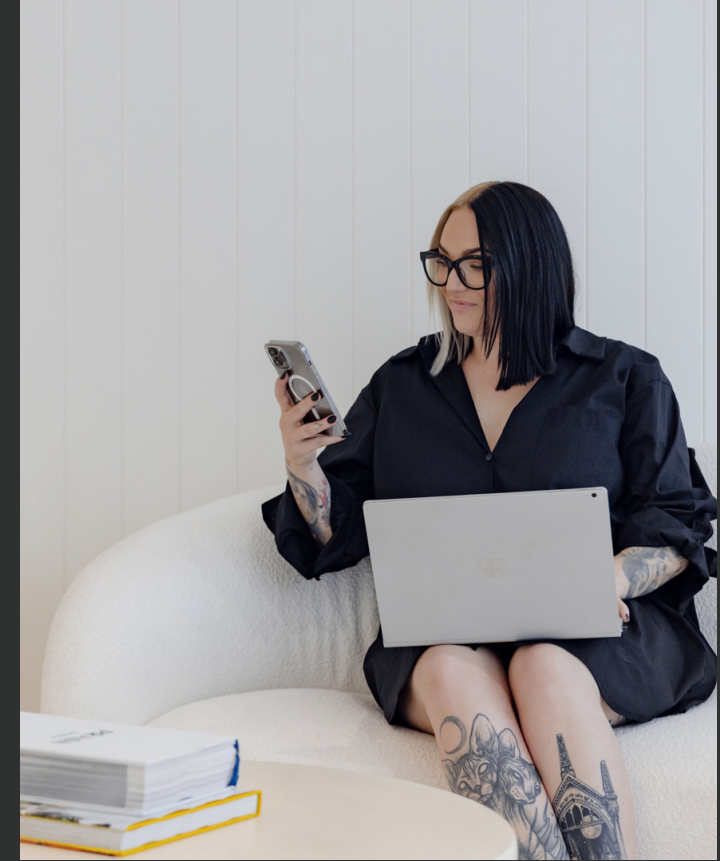
The next step is to book a discovery call with us where we can discuss your project briefly and plan the next steps to creating your dream home.

[HELLO@STUDIO-RAE.COM.AU](mailto:HELLO@STUDIO-RAE.COM.AU)

0447 013 838

[@\\_STUDIORAE](#)

[WWW.STUDIO-RAE.COM.AU](http://WWW.STUDIO-RAE.COM.AU)



NEWCASTLE, LAKE MACQUARIE, HUNTER VALLEY, CENTRAL COAST

\*if your project is outside of these areas, please contact us as we have happily taken on jobs interstate and projects outside of these areas.