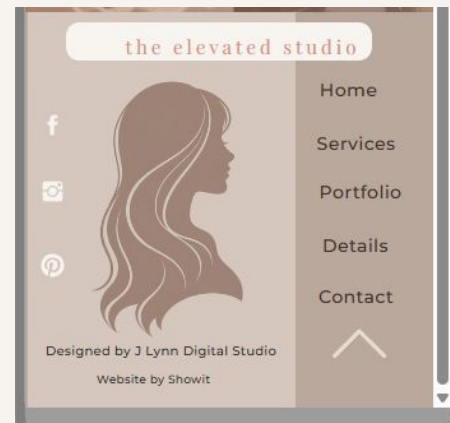
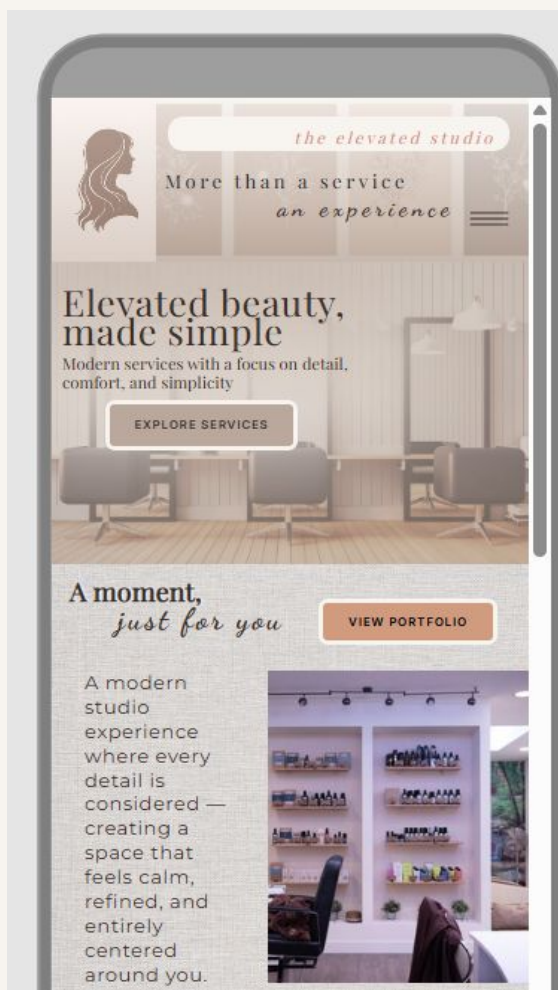


# Mobile Template

## Home Page



Footer



## Studio Services

Every service at The Elevated Studio is designed to feel simple, elevated, and tailored to you. From everyday maintenance to full transformations, each experience is approached with precision, care, and attention to detail.

### Hair Services

From subtle refreshes to full transformations, each service is designed to enhance your natural look while keeping your style modern, effortless, and easy to maintain.

- Haircuts & Styling
- Color & Highlights
- Blowouts
- Treatments & Conditioning



### Nail Services

Clean, detailed nail services designed to keep your look polished and refined — whether you prefer something simple or a more elevated finish.

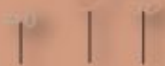
- Manicures
- Gel Services
- Nail Enhancements
- Nail Art & Custom Designs



### Specialty Services

For those looking for something more tailored, specialty services are designed to provide a fully customized experience with attention to every detail.

- Bridal & Event Styling
- Custom Color Services
- Advanced Treatments
- Consultation Services



## What to expect

### 01 — Book Your Appointment

Choose your service and select a time that works for you.

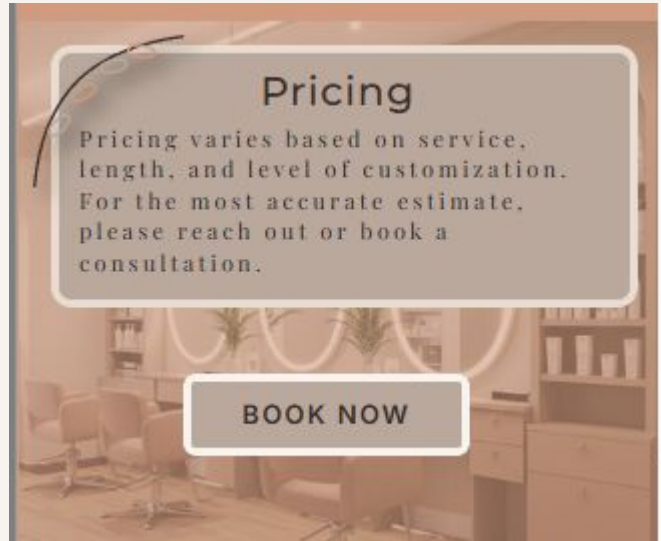
### 02 — Personalized Experience

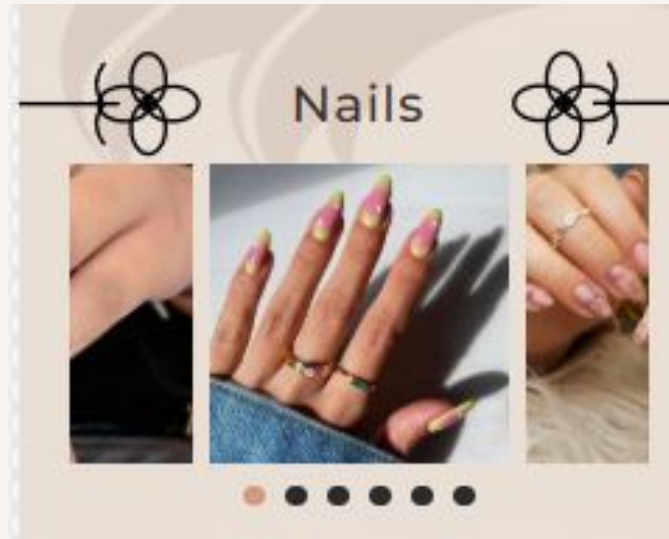
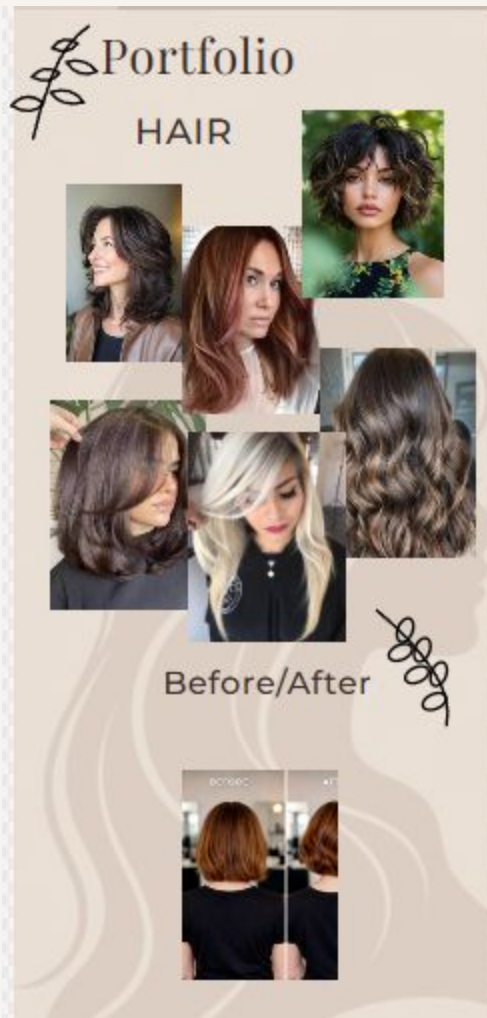
Every appointment is tailored to your preferences, style, and goals.

### 03 — Leave Feeling Elevated

Walk away feeling refreshed, confident, and effortlessly put together.

## Pricing Block





## Meet The Elevated Studio

A space designed with intention  
— where beauty feels effortless,  
and every detail is thoughtfully  
considered.

### ABOUT THE STUDIO

The Elevated Studio was created to offer more than just beauty services — it's a space where every detail is designed to feel calm, welcoming, and refined.

From the moment you walk in, the experience is centered around you. Thoughtful service, modern techniques, and attention to detail come together to create results that feel effortless, polished, and uniquely yours.

### THE EXPERIENCE

Why we're different

- Thoughtfully designed services
- A calm, welcoming environment
- Detail-driven results
- Personalized experience every time

### MEET THE STYLISTS

BECCA

Stylist Level 1



With a passion for creating natural, effortless results, Becca focuses on enhancing each client's individual style. Known for a thoughtful approach and attention to detail, every appointment is designed to feel relaxed, personalized, and seamless.

AMBER



### Stylist Level 2

With a passion for creating natural, effortless results, Amber focuses on enhancing each client's individual style. Known for a thoughtful approach and attention to detail, every appointment is designed to feel relaxed, personalized, and seamless.

CHRISTY



### Stylist/Nail Tech Level 1

With a passion for creating natural, effortless results, Christy focuses on enhancing each client's individual style. Known for a thoughtful approach and attention to detail, every appointment is designed to feel relaxed, personalized, and seamless.



Ready for your experience?

BOOK NOW

## Contact Page


**Hours** *the elevated studio*


Monday: Closed  
Tuesday: 9:00 AM – 6:00 PM  
Wednesday: 9:00 AM – 6:00 PM  
Thursday: 10:00 AM – 7:00 PM  
Friday: 9:00 AM – 6:00 PM  
Saturday: 9:00 AM – 4:00 PM  
Sunday: Closed


**Locations**

- The [City Name] Commons
- West End District
- Eastside Village
- The Collective at [City Name]
- Riverfront District
- Old Town

**SCHEDULE YOUR EXPERIENCE**




 (555)555-5555


 [booking@theelevatedstudio.com](mailto:booking@theelevatedstudio.com)



## Mobile Menu


*the elevated studio*




Home  
Services  
Portfolio  
Details  
Contact

Designed by J Lynn Digital Studio  
Website by Showit



## 404 Page



**Oops! We couldn't find that page.**

Here are some other links you may find useful:

[HOME](#)   [SERVICES](#)   [CONTACT](#)