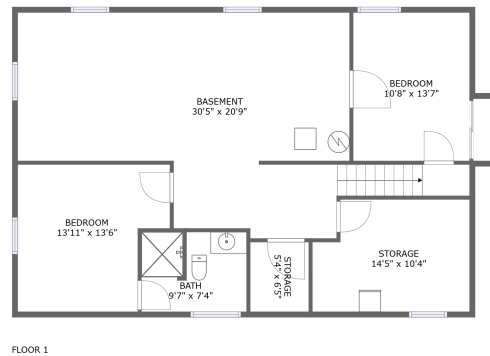
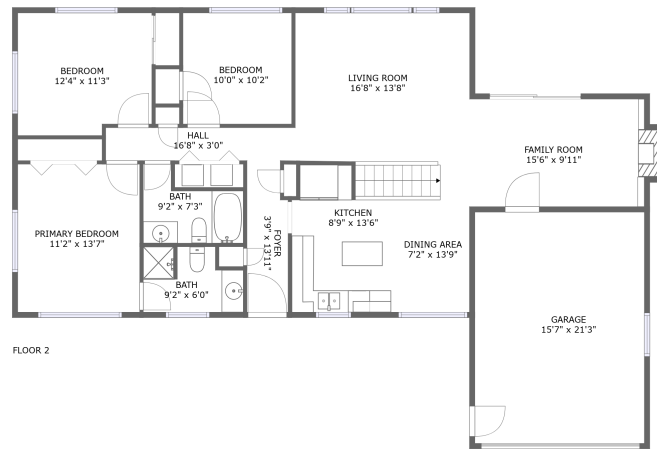


Home report

1075 Emerald St, Broomfield, CO, US



## Property summary

 **1** Garages


 **5** Bedrooms

 **3** Bathrooms

 **0** Half baths

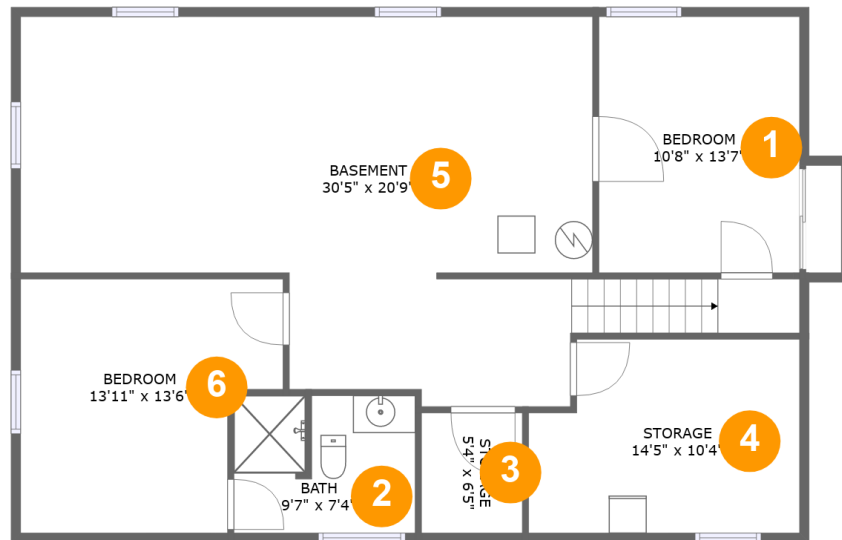
 **2** Floors

 **1,382**  
Gross living  
area sqft

 **2,968**  
Total sqft

Home report

1075 Emerald St, Broomfield, CO, US



## Room dimensions

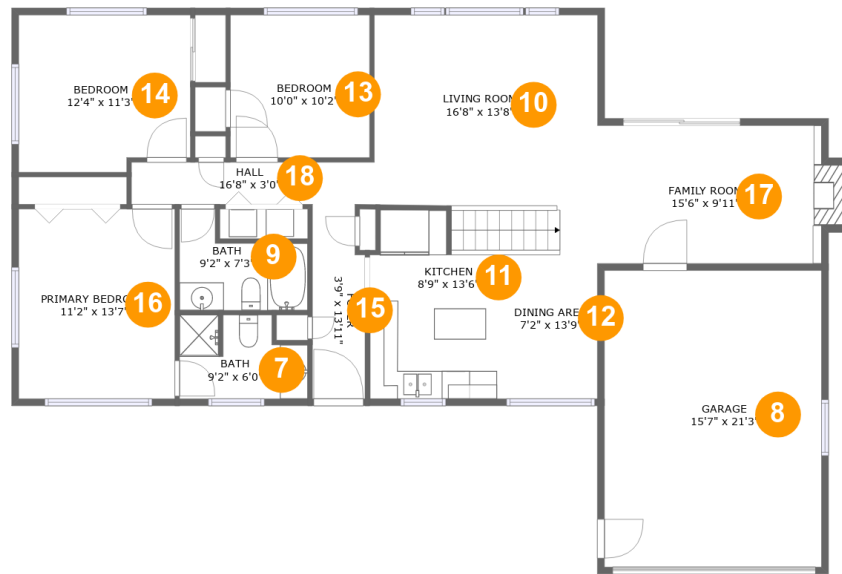
Floor 1

Total sqft: 1224 Living area: 0

#		Dimensions	sqft	Counted as living area
1	Bedroom	10'8" x 13'7"	145 sq. ft	No
2	Bath	9'7" x 7'4"	69 sq. ft	No
3	Storage	5'4" x 6'5"	34 sq. ft	No
4	Storage	14'5" x 10'4"	139 sq. ft	No
5	Basement	30'5" x 20'9"	547 sq. ft	No
6	Bedroom	13'11" x 13'6"	166 sq. ft	No

# Home report

## 1075 Emerald St, Broomfield, CO, US



## Room dimensions

Floor 2

Total sqft: 1744 Living area: 1382

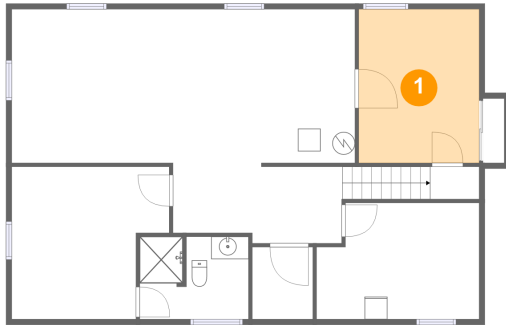
#		Dimensions	sqft	Counted as living area
7	Bath	9'2" x 6'0"	49 sq. ft	Yes
8	Garage	15'7" x 21'3"	330 sq. ft	No
9	Bath	9'2" x 7'3"	50 sq. ft	Yes
10	Living Room	16'8" x 13'8"	220 sq. ft	Yes
11	Kitchen	8'9" x 13'6"	120 sq. ft	Yes
12	Dining Area	7'2" x 13'9"	100 sq. ft	Yes
13	Bedroom	10'0" x 10'2"	102 sq. ft	Yes
14	Bedroom	12'4" x 11'3"	134 sq. ft	Yes
15	Foyer	3'9" x 13'11"	50 sq. ft	Yes
16	Primary Bedroom	11'2" x 13'7"	152 sq. ft	Yes
17	Family Room	15'6" x 9'11"	165 sq. ft	Yes

Home report

**1075 Emerald St,Broomfield,CO,US**

#		Dimensions	sqft	Counted as living area
18	Hall	16'8" x 3'0"	50 sq. ft	Yes

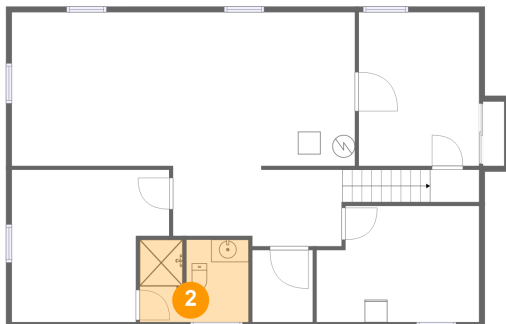
## 1 Floor 1 - Bedroom



Dimensions: 10'8" x 13'7"  
Area: 145 sq. ft  
Counted as living area: No

Heated: Yes  
Finished: Yes  
Enclosed: Yes  
Contiguous: No  
Permitted: Yes  
Wet space: No  
Addition: No  
Conversion: No

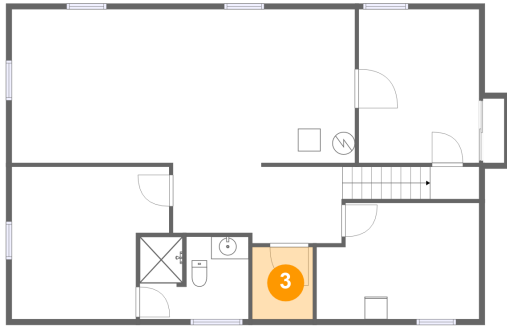
## 2 Floor 1 - Bath



Dimensions: 9'7" x 7'4"  
Area: 69 sq. ft  
Counted as living area: No

Heated: Yes  
Finished: Yes  
Enclosed: Yes  
Contiguous: No  
Permitted: Yes  
Wet space: Yes  
Addition: No  
Conversion: No

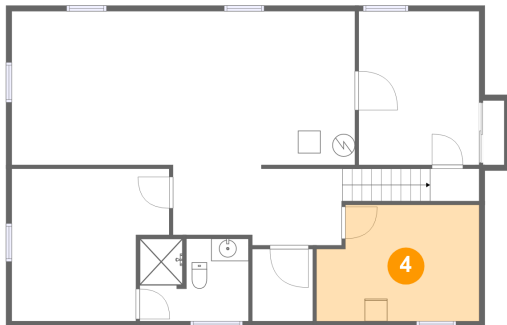
### 3 Floor 1 - Storage



Dimensions: 5'4" x 6'5"  
Area: 34 sq. ft  
Counted as living area: No

Heated: No  
Finished: No  
Enclosed: No  
Contiguous: Yes  
Permitted: Yes  
Wet space: No  
Addition: No  
Conversion: No

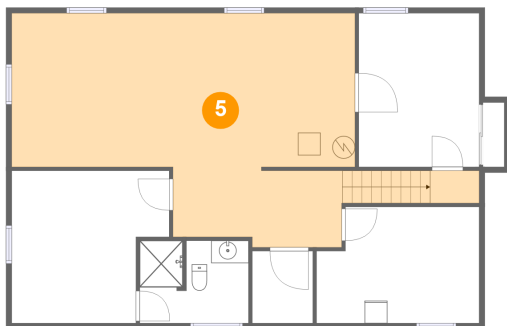
### 4 Floor 1 - Storage



Dimensions: 14'5" x 10'4"  
Area: 139 sq. ft  
Counted as living area: No

Heated: No  
Finished: No  
Enclosed: No  
Contiguous: Yes  
Permitted: Yes  
Wet space: No  
Addition: No  
Conversion: No

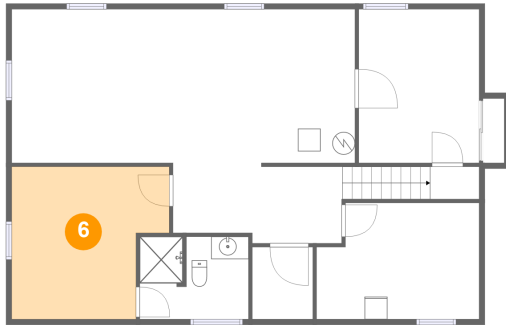
### 5 Floor 1 - Basement



Dimensions: 30'5" x 20'9"  
Area: 547 sq. ft  
Counted as living area: No

Heated: Yes  
Finished: No  
Enclosed: Yes  
Contiguous: Yes  
Permitted: Yes  
Wet space: No  
Addition: No  
Conversion: No

**6 Floor 1 - Bedroom**



Dimensions: 13'11" x 13'6"  
Area: 166 sq. ft  
Counted as living area: No

Heated: Yes  
Finished: Yes  
Enclosed: Yes  
Contiguous: No  
Permitted: Yes  
Wet space: No  
Addition: No  
Conversion: No

**7 Floor 2 - Bath**



Dimensions: 9'2" x 6'0"  
Area: 49 sq. ft  
Counted as living area: Yes

Heated: Yes  
Finished: Yes  
Enclosed: Yes  
Contiguous: Yes  
Permitted: Yes  
Wet space: Yes  
Addition: No  
Conversion: No

**8 Floor 2 - Garage**



Dimensions: 15'7" x 21'3"  
Area: 330 sq. ft  
Counted as living area: No

Heated: No  
Finished: No  
Enclosed: Yes  
Contiguous: Yes  
Permitted: Yes  
Wet space: No  
Addition: No  
Conversion: No

**9** Floor 2 - Bath



Dimensions: 9'2" x 7'3"  
Area: 50 sq. ft  
Counted as living area: Yes

Heated: Yes  
Finished: Yes  
Enclosed: Yes  
Contiguous: Yes  
Permitted: Yes  
Wet space: Yes  
Addition: No  
Conversion: No

**10** Floor 2 - Living Room



Dimensions: 16'8" x 13'8"  
Area: 220 sq. ft  
Counted as living area: Yes

Heated: Yes  
Finished: Yes  
Enclosed: Yes  
Contiguous: Yes  
Permitted: Yes  
Wet space: No  
Addition: No  
Conversion: No

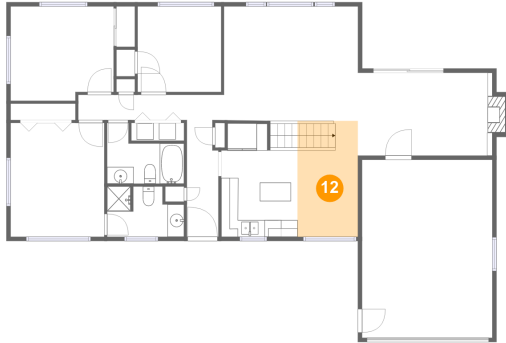
**11** Floor 2 - Kitchen



Dimensions: 8'9" x 13'6"  
Area: 120 sq. ft  
Counted as living area: Yes

Heated: Yes  
Finished: Yes  
Enclosed: Yes  
Contiguous: Yes  
Permitted: Yes  
Wet space: No  
Addition: No  
Conversion: No

## 12 Floor 2 - Dining Area



Dimensions: 7'2" x 13'9"  
Area: 100 sq. ft  
Counted as living area: Yes

Heated: Yes  
Finished: Yes  
Enclosed: Yes  
Contiguous: Yes  
Permitted: Yes  
Wet space: No  
Addition: No  
Conversion: No

## 13 Floor 2 - Bedroom



Dimensions: 10'0" x 10'2"  
Area: 102 sq. ft  
Counted as living area: Yes

Heated: Yes  
Finished: Yes  
Enclosed: Yes  
Contiguous: Yes  
Permitted: Yes  
Wet space: No  
Addition: No  
Conversion: No

## 14 Floor 2 - Bedroom



Dimensions: 12'4" x 11'3"  
Area: 134 sq. ft  
Counted as living area: Yes

Heated: Yes  
Finished: Yes  
Enclosed: Yes  
Contiguous: Yes  
Permitted: Yes  
Wet space: No  
Addition: No  
Conversion: No

**15** Floor 2 - Foyer



Dimensions: 3'9" x 13'11"  
Area: 50 sq. ft  
Counted as living area: Yes

Heated: Yes  
Finished: Yes  
Enclosed: Yes  
Contiguous: Yes  
Permitted: Yes  
Wet space: No  
Addition: No  
Conversion: No

**16** Floor 2 - Primary Bedroom



Dimensions: 11'2" x 13'7"  
Area: 152 sq. ft  
Counted as living area: Yes

Heated: Yes  
Finished: Yes  
Enclosed: Yes  
Contiguous: Yes  
Permitted: Yes  
Wet space: No  
Addition: No  
Conversion: No

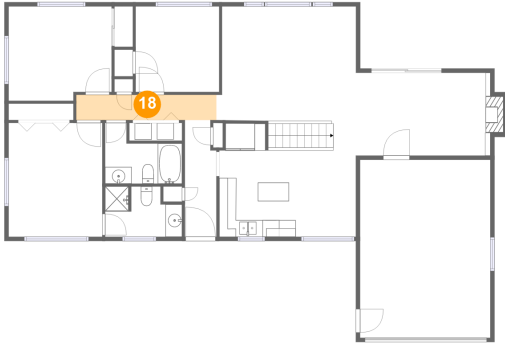
**17** Floor 2 - Family Room



Dimensions: 15'6" x 9'11"  
Area: 165 sq. ft  
Counted as living area: Yes

Heated: Yes  
Finished: Yes  
Enclosed: Yes  
Contiguous: Yes  
Permitted: Yes  
Wet space: No  
Addition: No  
Conversion: No

**18** Floor 2 - Hall



Dimensions: 16'8" x 3'0"  
Area: 50 sq. ft  
Counted as living area: Yes

Heated: Yes  
Finished: Yes  
Enclosed: Yes  
Contiguous: Yes  
Permitted: Yes  
Wet space: No  
Addition: No  
Conversion: No