

# The J.J. SCHECKEL SALE

## December 3, 2019



*She Sells!*

**SAV Blackcap May 4553**

17893601

One of the best, direct daughters of the 9 million dollar producer and breed legend, SAV Blackcap May 4136.



*She Sells!*

**Legends Miss Kelton 436**

17888198

One of the few ever in Existence! Full sister to breed-leading AI bull, AAR Ten X. Direct daughter of AAR Lady Kelton 5551.



Josh Scheckel / President

J.J. Scheckel Corporation  
21582 Hwy 62 • Bellevue, Iowa 52031

josh@jjscheckel.com • www.AngusCattleGenetics.com  
Office 563-872-4112



**Josh Scheckel / President**

J.J. Scheckel Corporation

21582 Hwy 62 • Bellevue, Iowa 52031

josh@jjscheckel.com • www.AngusCattleGenetics.com

Office 563-872-4112

Hello All!

My wife Angie, our 7 kids, and I would like to welcome all of you to take a look at, or to take a part in, our upcoming sale on December 3rd on AngusLive.com.

As a breeder, we have always focused on the base cow herd. Our cow foundation is based on historic and famous bloodlines, tracing back to 1824 in Scotland. These cows have been under intensive selection pressure for over 100 years. J.J. Scheckel has always focused on traits of economic importance, while at the same time keeping Angus cattle true to the original breed character that made them famous. We promote strong and sturdy cattle, that grow fast, yet display exceptional width, depth, length, and capacity, all while maintaining the maternal traits—fertility and fleshing ability—that made the Angus breed so great.

We have worked extremely hard building up a great herd that I hope continues on for several generations to come. I am passionate about the Angus business and personally work the cattle every day myself. I take the marketing pictures, perform all the chute work, make all the feed rations, all the breeding decisions, work and weigh every new calf, and maintain the records. I do this with the help of a couple great key employees.

The cows selling in this sale have served us extremely well, many at the prime of their life. They are not selling for any other reason other than a regular rotation of donors. They are absolutely top of the breed cows that we wish we could keep for a lifetime.

We welcome you to come in and view any of the cows selling, at any time. Please call, text, or email me, and we will set up a time that works for you.

Again, if you need anything or have any questions, don't hesitate to ask. We will do our very best to serve you. We will help arrange shipping or anything else you may require.

Thanks,  
Josh Scheckel

Cell Phone, Call or Text - 563-590-9903  
Email - Josh@jjscheckel.com



# The J.J. SCHECKEL SALE

December 3, 2019

Sale Ends 7 P.M. (CST)

Sale Hosted by

www.AngusLive.com



## SALE DAY PHONES:

(563) 590-9903 Josh Scheckel

(816) 516-1309 Jeremy Haag

**TERMS:** All bidding and payments are in US Dollars. Accepted payment forms are: Corporate or personal check, cashier's check, money order, Visa, Master Card, and Discover all immediately negotiable. 5% Credit Card convenience charge will be placed on all credit card purchases (Accepted - Visa, Master Card, and Discover). All payments are to be made to Angus Live - And Sent To - PO BOX 457 Smithville, MO 64089. Late fees are subject to a 15% finance charge after the seventh day. A fee of \$50 will be assessed on all late payments or returned checks and the bidder will be denied access to future auctions. Payments by credit card must be called in to office at the conclusion of the sale - Angus Live (816) 516-1309 to complete this process by phone. There are NO BUYER'S PREMIUMS in effect for this auction.

**CONDITIONS:** Any person placing bids on items in a specific auction agrees to these terms and conditions and understands that, by placing bids, they are entering into a binding contract between themselves and the seller(s) and that they will be held financially responsible for their actions. Angus Live acts as an agent between buyer and seller and may not be held responsible for any livestock merchandise. It is clear that Angus Live and representatives act only as a means between buyer and seller, and may not be held liable, financially or otherwise, for any failure on the part of the same to fulfill any obligations set forth in the sale or for the truths of any warranties expressed or implied. The information stated in the sale book has been prepared by the seller and is assumed to be fully accurate as presented. The sales of Angus breeding cattle will sell under the same standard terms and conditions of the American Angus Association.

**INVOICING:** An invoice with payment instructions will be sent to new buyer registered by e-mail at the close of bidding and sale. If you do not receive invoice by e-mail within 48 hours following the close of the auction, please contact (816) 532-0811. Failure to complete the payment terms as stated above will result in forfeiture of animals purchased and immediately reported to the Credit Bureau. Be sure you are capable of paying immediately and realize your bids are not based on financing. Angus Live reserves the right to charge the entire purchase price and late fees to the credit card on file if payment is not made in the seven days after the close of the auction.

**TRUCKING:** Each buyer is responsible for making their own trucking arrangements through seller or Angus Live. Trucking arrangements need to be made prior to or immediately following the sale. NO animal(s) will be delivered until payment is made in full.

**HEALTH PAPERS:** Furnished upon request for each animal. Any exportable animal(s) will need special testing and will be at buyer's expense unless otherwise discussed with seller.

**LIABILITY:** Angus Live is not responsible for injury or accidents. Animal(s) become property of the new buyer when sold. Following the auction we strongly recommend that all new owners take out mortality insurance on their purchases. Angus Live nor seller cannot be held responsible for the health or condition of animals after the conclusion of animal(s) being sold. Angus Live assumes no liability for accidents or injuries that occur. All Angus breeding stock will sell under standard terms and conditions of the American Angus Association.

**TO REGISTER FOR A BIDDER NUMBER GO TO:** www.anguslive.com and scroll down to the bottom of our home page, click on the "Register to Bid" button and follow the prompts.

**BIDDING ADDRESS:** www.anguslive.com



## 1 SAV Blackcap May 4553

Birth Date: 2-18-2014 Cow #\*17893601 Tattoo: 4553

SAV Adaptor 2213 #BCC Bushwacker 41-93 #Paramont Ambush 2172  
 14114073 SAV Abigale 0451 RC Anita T Bando 918903  
 #Schoenes Fix It 826  
 SAV Abigale 6062  
 #SAV 8180 Traveler 004 (ROF) #Sitz Traveler 8180  
 SAV Blackcap May 4136 +Boyd Forever Lady 8003  
 \*14739095 #+SAV May 2397 #+SAF 598 Bando 5175  
 SAV May 7238

BEPD	WEPD	YEPD	MILK
+2.0	.54	+52	.48
		+92	.44
		+18	.41
HCSOK CW		REA	\$B
+28	.44	+64	.41
		+101	

- Sells Open and Ready to Flush.
- An amazing opportunity to acquire one of our top donor cows, our Headline cow for this sale. Like all of the cows selling, this one we hate to sell. So much potential here. She is phenotypically beautiful, super long, feminine, and she possesses an amazing and rare pedigree.
- She has a group of her first embryo calves for us this year, and they are stunning. She produced both the #1 weaning weight heifer calf and #1 weaning weight bull calf in our 2019 calf crop!
- She has had her own progeny sell in the annual SAV sale.
- Direct daughter of \$9 million breed icon, SAV Blackcap May 4136.
- Ultra-unique mating here with this cow. Her sire is SAV Adaptor 2213, better known as the sire of AAR Lady Kelton 5551, who is also the dam of the past #1 bull in the breed and major AI sire, AAR Ten X 7008.
- Her dam, SAV Blackcap May 4136, has been one of the most influential cows ever to exist in the Angus breed. She has shattered all records as the #1 income producing cow in SAV history, generating millions in progeny. One hundred twenty-seven direct sons and daughters of 4136 have averaged \$30,000. She has been known as the "Sire Producer." She has produced AI stars like the \$750,000 SAV President, \$650,000 SAV Sensation, the \$110,000 SAV Resource, the \$725,000 SAV Pedigree, and many more major AI bulls including SAV Recharge, SAV Renown, SAV Seedstock, SAV Rainfall, SAV Raindance, and SAV Governor.
- This cow is a maternal sister to major bulls, the \$750,000 SAV President, \$650,000 SAV Sensation, the \$110,000 SAV Resource, the \$725,000 SAV Pedigree, and many more major AI bulls, including SAV Recharge, SAV Renown, SAV Seedstock, SAV Rainfall, SAV Raindance, and SAV Governor.
- There will be no more of these authentic SAV Blackcap May 4136 daughters ever produced, as she is now deceased. She will go down as one of the greatest cows ever in the Angus business. When the history books are written she will, without question, be at the top.



**2019 Heifer Calf G514**, heaviest weaning weight heifer calf in our 2019 calf crop at 864 lbs., against 150 contemporaries, a Lot 1 daughter.



**2019 Bull Calf G607**, heaviest weaning weight bull calf in our 2019 calf crop at 882 lbs., against 150 contemporaries, a Lot 1 son.



*SAV Blackcap  
May 4136 -  
Dam of Lot 1.*



*SAV Resource 1441 - Maternal brother*

*SAV Adaptor  
2213 - Sire of  
Lot 1.*



*SAV Renown 3439 - Maternal brother*



## 2 Legend's Miss Kelton 436

Birth Date: 9-7-2014 Cow #\*17888198 Tattoo: 436

Mytty In Focus <sup>(PDF)</sup>  
#\*13880818 Mytty Countess 906

AAR Lady Kelton 5551  
#15151449 +HSAF Lady Kelton 504B

#SAF Fame  
GDAR Forever Lady 246  
#Sitz Alliance 6595  
Baldrige Countess 357  
#BCC Bushwacker 41-93  
SAV Abigale 0451  
#Sitz Traveler 8180  
NA Lady Constance 504

BEPD		WEPD		YEPD		MILK	
-1.0	.53	+53	.47	+95	.42	+31	.39
HDSOK CW		REA		SB			
+34 .44		+.28 .41		+104			

- Confirmed bred to Bull Group #1 listed on Page 16. Due to calve March 1, 2020.
- A co-headliner, seize the opportunity here! Endless opportunity and endless potential! Only a couple in existence--Rare, Rare, Rare! Here is a full sister to the one and only AAR Ten X 7008, who is the nationally known AI bull, leading the entire Angus breed in registrations at #1 for several years running.
- A rare and hard to find EPD of -1.0 for birthweight, here is a famous pedigree that will bring the Birth EPDs down when mated with big powerful bulls. She has a ton of opportunity and potential!
- Her full brother, AAR Ten X, is one of the few bulls to offer a complete panel of EPDs in the top of the breed, from growth to carcass, and has held those numbers for years, something rarely ever achieved. He posted individual ratios of weaning 112, yearling 116, ribeye of 123, and marbling of 123.
- This cow's dam, the now-deceased AAR Lady Kelton 5551, is one of the greatest phenotype cows ever produced in the Angus business. She has produced, besides AAR Ten X, many other herd sires for Angus Alliance. She has been described by Arntzen Angus in Montana as a moderate-framed cow, very deep-ribbed, with a near perfect udder.
- She has a production record of birth 1@92 and weaning weight 1@105. She has just weaned off her third calf. We believe she will continue to be a calving ease, light birth weight dam that puts the extra pounds into her progeny in regards to weaning and yearling weights.
- We have some of her first embryo calves weaned in our herd, and they have all been standouts since birth. They look absolutely amazing. They will go on to do great things in the Angus business, no doubt.
- She has been an absolutely prolific embryo producer, producing an average of 18 high quality embryos per flush.



## 2A Miss Kelton Embryos

Eight Frozen Embryos

#\*Connealy Black Granite #\*Connealy Consensus 7229  
 Bar R Jet Black 5063 #Eura Elga of Conanga 9109  
 \*18389838 Bar R Iris Anita 0113 #Sitz Upward 307R  
 Bar R Anita 7081  
 #\*Mytty In Focus [RF] #SAF Focus of ER  
 Legend's Miss Kelton 436 Mytty Countess 906  
 +\*17888198 #AAR Lady Kelton 5551 SAV Adaptor 2213  
 +HSAF Lady Kelton 504B

BEPD		WEPD		YEPD		MILK	
\$	+1.4	.88	+85	.80	+151	.47	+26
D	-1.0	.53	+53	.47	+95	.42	+31
CW		REA		SB			
\$	+82	.49	+95	.41	+200		
D	+34	.44	+28	.41	+104		

## 2B Miss Kelton Embryos

Eight Frozen Embryos

\*Silveiras Conversion 8064 #+BT Crossover 758N  
 Byergo Black Magic 3348 +EXG Saras Dream S609 R3  
 \*17803074 \*Byergo Elia Cupcake 5900 Byergo Picasso  
 +Byergo Miss Cupcake 3600  
 #\*Mytty In Focus [RF] #SAF Focus of ER  
 Legend's Miss Kelton 436 Mytty Countess 906  
 +\*17888198 #AAR Lady Kelton 5551 SAV Adaptor 2213  
 +HSAF Lady Kelton 504B

BEPD		WEPD		YEPD		MILK	
\$	+5.2	.85	+104	.79	+190	.66	+28
D	-1.0	.53	+53	.47	+95	.42	+31
CW		REA		SB			
\$	+95	.47	+119	.42	+243		
D	+34	.44	+28	.41	+104		

## 2C Miss Kelton Embryos

Eight Frozen Embryos

#Sitz Upward 307R #\*Connealy Onward  
 Plattemere Weigh Up K360 [RF] Sitz Henrietta Pride 81M  
 #\*16692552 #Barbara of Plattemere 337 #GAR Retail Product  
 Barbara of Plattemere 311  
 #\*Mytty In Focus [RF] #SAF Focus of ER  
 Legend's Miss Kelton 436 Mytty Countess 906  
 +\*17888198 #AAR Lady Kelton 5551 SAV Adaptor 2213  
 +HSAF Lady Kelton 504B

BEPD		WEPD		YEPD		MILK	
\$	+1.6	.96	+76	.95	+138	.94	+26
D	-1.0	.53	+53	.47	+95	.42	+31
CW		REA		SB			
\$	+60	.69	+75	.63	+166		
D	+34	.44	+28	.41	+104		



AAR Lady Kelton 5551 - Dam of Lot 2.

## 2D Miss Kelton Embryos

Eight Frozen Embryos

#MCC Daybreak #+Boyd New Day 8005  
 Quaker Hill Rampage OA36 [RF] #MCC Miss Focus 134  
 +\*16925771 +\*QHF Blackcap 6E2 of 4V16 4355 Ideal 4355 of OT26 2440  
 \*QHF Blackcap 4V16 of 1H8  
 #\*Mytty In Focus [RF] #SAF Focus of ER  
 Legend's Miss Kelton 436 Mytty Countess 906  
 +\*17888198 #AAR Lady Kelton 5551 SAV Adaptor 2213  
 +HSAF Lady Kelton 504B

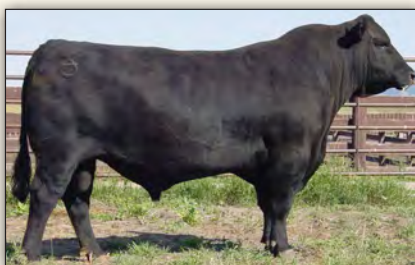
BEPD		WEPD		YEPD		MILK	
\$	+2.5	.97	+82	.97	+139	.95	+19
D	-1.0	.53	+53	.47	+95	.42	+31
CW		REA		SB			
\$	+64	.80	+1.46	.74	+165		
D	+34	.44	+28	.41	+104		



Mytty In focus - Sire of Lot 2.



2019 Heifer Calf G545



AAR Ten X 7008 SA  
 - Full brother of Lot 2.



2019 Heifer Calf G541



SAV Emblynette 1181 - Dam of Lot 3.



SAV Bismarck 5682 - Sire of Lot 3.

### 3 SAV Emblynette 3530

Birth Date: 1-4-2013 Cow #\*17579664 Tattoo: 3530

SAV Bismarck 5682 <sup>ROF</sup> #\*15109865  
 #\*GAR Grid Maker SAV Abigale 0451  
 #GDAR Traveler 044  
 GAR Precision 2536  
 #Schoenes Fix It 826  
 SAV Abigale 6062

SAV Emblynette 1181 #\*13845264  
 #\*SAF 598 Bando 5175  
 #\*Sav Emblynette Diamond 6377  
 #Bon View Bando 598  
 +SAF Royal Lass 1002  
 #Pro Trend 9042 LW  
 SAV Sky Diamond 2582

- Confirmed bred to Bull Group #1 listed on Page 16. Due to calve February 14, 2020.
- Maternal sister to the Lot 1 bulls in the 2006 and 2008 SAV production sales.
- Maternal sister to the lead off heifer in the 2007 SAV production sale.
- Her dam, SAV Emblynette 1181, is a second generation Pathfinder in the SAV herd. She posts a progeny weaning ratio of 7@106 against the stiffest competition of contemporaries in the business.
- Her granddam produced over \$1 million in progeny until the age of 17.
- This cow is a high-end, beautiful-uddered, feminine, SAV Bismarck daughter. SAV Bismarck is a major AI bull with Pathfinder status.
- She has had her own progeny sell in the yearly SAV production sale, averaging \$11,000 each.
- She also has a production record of birth 2@97, weaning ratio of 2@103, ribeye 3@104 and IMF 3@108.
- She is phenotypically beautiful, exceptionally long, deep and powerful.

BEPD	WEPD	YEPD	MILK
+2.2	.52	+62	.47
CW	REA	\$B	
+44	.43	+56	.40
			+125





SAV Emblynette 1057 - Dam of Lot 4.



SAV Mustang 9134 - Sire of Lot 4.

## 4 SAV Emblynette 3394

Birth Date: 4-15-2013 Cow \*17556183 Tattoo: 3394

SAV Mustang 9134 #\*SAV Final Answer 0035 [ROF] #Sitz Traveler 8180  
 #16397246 #SAV Emblynette 7415 SAV Emulous 8145  
 #SAV Net Worth 4200  
 #SAV Emblynette 7260  
 #\*\*SAV 707 Rito 9969 [ROF] +Rito 707 of Ideal 3407 7075  
 SAV Emblynette 1057 BR Polly 8077-472  
 \*16928480 #SAV Emblynette 8259 #+SAV 004 Density 4336  
 +SAV Emblynette 3325

BEPD	WEPD	YEPD	MILK
+4.4	.53	+58	.46
		+100	.42
		+40	.37
HOBOK		REA	\$B
		+51	.39
		+66	.36
		+150	

- Confirmed bred to Bull Group #1 listed on Page 16. Due to calve February 14, 2020.
- Past SAV donor, #2 intermuscular fat, #5 yearling weight, and #7 ribeye in her 2013 calf crop at Schaff Angus Valley.
- She posted her own individual weaning ratio of 110, yearling ratio of 115, and an amazing intermuscular fat ratio of 142.
- Her dam, SAV Emblynette 1057, is a pictured featured donor on the SAV website. She posts a production record of weaning 4@107, yearling 2@108, intermuscular fat 2@119 and ribeye 2 @105.
- Her maternal brother, SAV Cutback 6258, was a featured bull sold in the 2017 SAV Sale. He recorded a weaning ratio of 108 at 990 pounds.
- Her sire, SAV Mustang 9134, was an \$80,000 top-selling Final Answer son. He is described as a proven calving-ease sire that adds muscle, stoutness, and eye appeal to his offspring. He is full of volume and capacity.
- She has a great udder and beautiful phenotype and is as powerful as you can make one.



SAV Erica 0375 - Dam of Lot 5.



SAV Angus Valley 1867 - Sire of Lot 5.

## 5 SAV Erica 3174

Birth Date: 2-26-2013 Cow 17556303 Tattoo: 3174

SAV Angus Valley 1867 [PDF] #\*SAV Iron Mountain 8066 #TC Gridiron 258  
 #+\*17016630 #+SAV May 2397 #+SAF 598 Bando 5175 SAV Madame Pride 3249  
 #SAV Net Worth 4200 SAV May 7238 #SAV 8180 Traveler 004 [PDF]  
 SAV Erica 0375 +SAV May 2410 #SAV 598 Bando 5175  
 +16683488 SAV Erica 0178 SAV Erica 7102

BEPD	WEPD	YEPD	MILK
+2.2	.53	+58 .47	+102 .41
CW	REA	SB	
+37	.41	+27	.38
			+114

- Confirmed bred to Bull Group #1 listed on Page 16. Due to calve February 14, 2020.
- A picturesque, feminine, sharp, beautiful cow. She is featured on the SAV website as an example of the Erica family.
- This cow has had two of her very own progeny sell in the yearly SAV sales, averaging \$10,750 each.
- Her sire is the \$200,000 Genex AI bull, SAV Angus Valley 1867.
- Her dam, SAV Erica 0375, is a high end producer in the SAV herd. She posts a progeny production record of birth 5@97, weaning 5@101, yearling 2@104, intermuscular fat 2@105 and ribeye of 2@104.
- This cow had an individual weaning ratio of 101 against some of the stiffest contemporary competition to be found anywhere.
- She is picture perfect and has always maintained flesh easily.



SAV Emblynette 7566 - Dam of Lot 6.



SAV Registry 2831 - Sire of Lot 6.



SAV Emblynette 0491 - Maternal sister of Lot 6.


## 6 SAV Emblynette 4075

Birth Date: 2-21-2014 Cow #17824110 Tattoo: 4075

SAV Registry 2831 +Rito 707 of Ideal 3407 7075 #RR Rito 707  
 +\*17318928 SAV Madame Pride 0075 Ideal 3407 of 1418 076  
 #SAV Net Worth 4200 #+SAF 598 Bando 5175  
 SAV Emblynette 7566 #SAV Madame Pride 8264  
 +15778925 #SAV Emblynette 7261 #SAV 8180 Traveler 004 [RF]  
 #\*N Bar Emulation EXT  
 #SAV Emblynette April 1509

• Confirmed bred to Bull Group #1

BEPD	WEPD	YEPD	MILK
+1.3	.55	+38	.49
CW	REA	SB	
+30	.42	+26	.39
			+119

listed on Page 16. Due to  calve March 16, 2020.

- She is described as a deep, massive, and easy fleshing cow, from generations of top producing Emblynette females.
- She was the #10 IMF female in her calf crop.
- She has an individual record of birth ratio 98, weaning ratio 104, yearling ratio 104, and an IMF of 107.
- Her dam, SAV Emblynette 7566, has over \$1 million in progeny sales. She was featured and pictured on the SAV website. She records weaning ratio 3@109, yearling ratio 3@108, IMF 57@110, and she has over 18 daughters in production in the SAV herd.
- Her maternal sister, SAV Emblynette 0491, is the dam of the \$100,000 selling bull, SAV West River 2066.
- Her famous sire, SAV Registry 2831, is the sire of the \$235,000 bull, SAV Seedstock 4838 and the \$950,000 bull, SAV Sensation 5615 and many more major AI bulls.



**Ellston Scheckel B97 - Lot 7**



*Erica of Ellston G366 - Dam of Lot 7*



*Basin Excitement - Sire of Lot 7*

**7**

**Ellston Scheckel B97**

Birth Date: 4-26-2014 Cow #+\*17875382 Tattoo: B97

Basin Excitement #\*16047404 Basin Lady S532 AK #\*SydGen CC&7 Erica of Ellston G366 #16123322 Erica of Ellston D184 #Gardens Expedition Basin Primrose Lady 5287 #Vermilion Payweight J847 Basin Lady 306E #+SAF Connection SydGen Forever Lady 4087 #Woodhill Statesman 54K-90N #Erica of Ellston B235

BEPD	WEPD	YEPD	MILK
+1.7	.51	+66 .46	+116 .42
HCBSOK		CW	REA
		+45 .40	+48 .37
			\$B
			+128

- Confirmed bred to Bull Group #1 listed on Page 16. Due to calve March 1, 2020.
- A Pathfinder Cow who has an incredible story behind her.
- Ellston Scheckel B97 is a direct daughter of Erica of Ellston G366, who is one of the most incredible females ever bred in the 90-year history of Hoover Angus. Ten of her sons have been sale features at Hoover Angus. G366 produced the Lot 1 and 2 bulls in the 2017 Production Sale, selling for \$14,500 and \$9,500. G366 scanned a 131 IMF ratio and a 115 ribeye ratio individually.
- Ellston Scheckel B97 is also a full sister to Erica of Ellston M38, who was Hoover Angus's #1 weaning weight heifer of her calf crop. M38's first son was the Lot 1 bull in the 2016 Hoover auction, selling for \$14,500. M38's heifer calf easily took #1 weaning weight calf of the 2017 crop at 872 pounds. She was actually the heaviest weaning weight heifer ever in the 90-year history of Hoover Angus. M38 is also the #1 indexing cow in the entire Hoover herd.
- Ellston Scheckel B97's sire is the famous Basin Excitement, who is a big time spread bull, from birth weight to weaning weight. His progeny have shined in all herds where he was used. He is a true calving-ease bull who transmits growth and performance second to none.
- B97's two natural daughters, Ellston Scheckel D128 and Ellston Scheckel E229, both continue to serve in the Scheckel herd.
- Hoover Angus talks a lot about docility traits, and without question, you can absolutely see this first hand as B97 was always the first calf to come up to you in a pen of 100. It was unreal how docile she was compared to her herd mates.

**Here's a miraculous story about B97:**

"Ellston Scheckel B97" I bought her as an embryo egg, at the Denver Stock Show in 2012 from Hoover Angus. Out of one of their best cows, "Erica of Ellston G366." Her sire is "Basin Excitement."

She was born to a recip dam who didn't claim her, she became very sick and almost died, she was orphaned and weaned at just 273 pounds in November 2014. In May of 2015 she weighed 630 pounds when we took yearling measurements.

Within 1 month of that 630 pound weight, she became bred. She had her first calf in March of 2016.

Since then, she is currently raising her 4th calf, she was awarded the coveted Pathfinder status award this year. She had maintained a calving interval on 4 calves at 365 days, she has posted 3 weaning records at a 107 ratio, 3 yearling records at a 105 ratio, and this year's calf looks to be the best yet.



RB Lady 890-1131 - Dam of Lot 8.



Sitz Upward 307R - Sire of Lot 8.



RB Lady Standard 305-890 - Granddam of Lot 8.

## 8 RB Lady Upwards 1131-3269

Birth Date: 12-6-2013 Cow #\*17832478 Tattoo: 3269

Sitz Upward 307R #14963730  
 #\*Connealy Onward  
 Sitz Henrietta Pride 81M  
 #GAR Objective 7125  
 RB Lady 890-1131  
 #\*17010066  
 #\*Connealy Lead On  
 Altune of Conanga 6104  
 #Sitz Value 7097  
 Sitz Henrietta Pride 1370  
 #\*SS Objective T510 0T26  
 +GAR 1407 New Design 1463  
 #\*LCC New Standard  
 +\*BA Lady 6807 305

• Sells Open and Ready to Flush.

BEPD	WEPD	YEPD	MILK
+1.1	.55	+61	.48
CW	REA	SB	
+40	.46	+56	.42
			+112

• Take a look at the volume and capacity here. You

must see her in person to appreciate. Several sons have been among the top at bull tests throughout the country.

• Maternal granddaughter of the \$170,000 RB Lady 305-890.

• She is the highest birth to weaning spread Upwards daughter in the entire Angus breed.

• Her dam is a full sister to major ABS bull studs RB American Made 197 and RB Riley 2181.

• In the words of breeder Glen Davis from Riley Bros., "Lady Upwards 1131-3269 is one of the best growth females ever produced by Riley Bros."

• Her DNA profile puts her in the Top 3% for Weaning and Yearling growth, Top 1% for Milk, and Top 5% for Carcass Weight.

• Her sire, Sitz Upwards 307R, sold 1/2 interest for \$85,000 in 2006. One of the breed's most popular AI sires, he sires growth.

• Her sire, Sitz Upwards 307R, has sired many bull test champions throughout the country, and many prestigious females revered around the world.



BoBo Blackbird 0020 - Dam of Lot 9.

## 9 Spruce Mtn Blackbird 2078

Birth Date: 2-22-2012 Cow #\*17330512 Tattoo: 2078

EXAR Upshot 0562B #\*16541214  
 #Sitz Upward 307R #++EXAR Barbara T020  
 BoBo Blackbird 0020 #\*Summitcrest Complete 1P55 [RDF]  
 #16763614 +Riverbend Blackbird 4058  
 #\*Connealy Onward Sitz Henrietta Pride 81M  
 #Isu Imaging Q 9111 LCC Mc Henry Barbar MG382  
 #CF Right Design 1802 Summitcrest Elba 1M17  
 #Bon View New Design 1407 [RDF] Davis Yr Blackbird 558H

- Confirmed bred to Bull Group #1 listed on Page 16. Due to calve April 15, 2020.
- Production ratios: weaning 3@108, yearling 3@105, ribeye 3@103, IMF 3@103.
- Her daughters in production in our herd are some of the best; lots of milk, lots of growth.
- She was the \$25,000 selling highlight of the 2012 Angus Night on the Mountain Sale in Denver, Colorado.
- Maternal sister sold for \$25,000 at the same offering.
- A flush sister sold for \$100,000 at the 2011 BoBo Angus Sale, selling to a partnership of Deer Valley Farm and Express Ranch.
- Her dam, Blackbird 0020, blends the REA leader Summitcrest Complete with the \$54,000 now-deceased donor Blackbird 4058.
- Maternal sisters to the dam include: the \$56,000-valued, half-interest selection of Wellington Angus, who went on to produce Blackbird 9072; the \$34,000 valued half-interest selection of Malones Supreme Angus in the 2010 BoBo Sale; and Blackbird 9090, the \$13,000 selection of Hillhouse Angus in that same offering.
- Her sire, EXAR Upshot, has transitioned from a crowd favorite at the 2011 National Western to a preferred proven sire.
- Her sire, EXAR Upshot, is arguably the stoutest, most attractive high \$Beef value bull in the business. Few bulls have ever sired the Denver Champion Carload and Pen of Three bulls in the same year - find another that's done it in his very first calf crop!
- She is big-hipped, deep and long. She brings with her many breed-leading traits.
- She has a high producing daughter selling in this sale also, Blackbird Scheckel B85.

BEPD	WEPD	YEPD	MILK
+4.1	.53	+60	.47
CW	REA	\$B	
+51	.43	+66	.39
		+136	

## 9A Blackbird 2078 Embryos

Seven Frozen Embryos  
 #TC Total 410 #Bon View New Design 208  
 Poss Total Impact 745 +TC Erica Eileen 2047  
 #15885405 Poss Blackcap 5116 #Connealy Lead On  
 Poss Blackcap 205

BEPD	WEPD	YEPD	MILK
\$+2.7	.95	+65	.94
CW	REA	\$B	
\$+52	.75	+56	.69
		+174	

## 9B Blackbird 2078 Embryos

Two Frozen Embryos  
 #\*SAV Heritage 6295 #CAR Duke 104  
 SAV Harvester 0338 \*SAV Blackcap May 4136  
 #\*16687737 +\*SAV Emblynette 7749 #SAV Net Worth 4200  
 #\*Sav Emblynette Diamond 6377

BEPD	WEPD	YEPD	MILK
\$+6.7	.95	+71	.94
CW	REA	\$B	
\$+52	.58	+35	.52
		+133	



EXAR Upshot 0562B - Sire of Lot 9.



Spruce Mtn Blackbird 2030 - Maternal sister of Lot 9.



*Spruce Mtn Blackbird 2078 - Dam of Lot 10.*



*GAR Prophet - Sire of Lot 10.*

## 10 **Blackbird Scheckel B85**

Birth Date: 4-24-2014 Cow \*17882366 Tattoo: B85

GAR Prophet <sup>[ROF]</sup> #CRA Bextor 872 5205 608 #BAR Ext Traveler 205  
 #+\*16295688 +GAR Objective 1885 Cra Lady Jaye 608 498 S Easy  
 #\*EXAR Upshot 0562B #\*SS Objective T510 OT26  
 Spruce Mtn Blackbird 2078 GAR 1407 New Design 2232  
 #+\*17330512 +BoBo Blackbird 0020 #Sitz Upward 307R  
 #+EXAR Barbara T020  
 #\*Summitcrest Complete 1P55 <sup>[ROF]</sup>  
 +Riverbend Blackbird 4058

	BEPD	WEPD	YEPD	MILK
	+6	.54	+55	.48
			+97	.43
			+33	.38
	CW	REA	\$B	
	+40	.44	+46	.39
			+120	

- Confirmed bred to Bull Group #1 listed on Page 16. Due to calve February 14, 2020.
- Here is a high milking, high producing daughter of Spruce Mtn Blackbird 2078, who is selling in this auction as well.
- B85 records an outstanding production record of 2@107 for weaning, 2@107 for yearling, 2@105 for IMF, and 2@108 for ribeye.
- Her dam, Spruce Mtn Blackbird, was the \$25,000 selling highlight at the 2012 Angus Night on the Mountain Sale in Denver.
- Her sire, GAR Prophet, is known for his breed-leading growth and carcass, and the stylish and high volume daughters he produces.
- B85 has done everything right for us, she is heavy milking and always raises an outstanding calf.



TC Blackbird Ursa 6087 - Dam of Lot 11.



Connealy Onward - Sire of Lot 11.

11

**Marda Blackbird Ursa 536** [OSF]

Birth Date: 2-15-2015      Cow # \*18165163      Tattoo: 536

Connealy Onward #14216491      #Connealy Lead On      #Connealy Leadtime  
 Eligence Plus of Conanga  
 #GAR Traveler 1489  
 Avalon 1418 of Conanga 6276  
 #TC Freedom 104  
 #Connealy Forefront  
 #TC Ruby 9095  
 TC Main Frame 726  
 TC Blackbird Ursa 0067

BEPD	WEPD	YEPD	MILK
+1.7	.54	+43	.47
+26	.41	+43	.37

- Confirmed bred to Bull Group #1 listed on Page 16. Due to calve February 14, 2020.
- She is a full flush sister to Marda Onward 460, the #2 top Midland Bull Test bull in 2015 for Average Daily Gain. Midland is the nation's biggest and most prestigious bull test, competing with over 600 of the best bulls in the industry from producers around the country. Marda Onward 460 was the \$26,000 3rd top-selling bull at Midland in 2015.
- She posts individual ratios of 91 for birth and 118 for weaning.
- She was selected as Lot 1 by J.J. Scheckel at the Marda production sale.
- Her proven dam, TC Blackbird Ursa 6087, was bred at TC Ranch in Nebraska and is a foundation donor cow at Marda Angus. She posted birth ratio of 95, 114 for weaning, and 109 for yearling on 5 natural calves.
- She has a flush sister who was the top-selling female at the 2014 Marda production sale.
- She is loaded with high indexing, proven genetics.
- Her sire, Connealy Onward, is a legendary major AI stud bull that has sired many other greats such as Sitz Upward 307R and many more.






## 12 Scheckel Delia A47

Birth Date: 5-1-2013 Cow #\*17636280 Tattoo: A47

ONEills OMAI King #+BT Crossover 758N #CA Future Direction 5321  
 \*16478826 +\*ONEills Royal Lady 40 BT Royal Pride 237G  
 #+SAF 598 Bando 5175  
 #+Leachman Right Time +ONEills Royal Lady 28  
 #\*N Bar Emulation EXT  
 ONEills Delia 730 Leachman Erica 0025  
 +\*16241046 ONEills Delia 715 +Circle Oak Traveler 524  
 #+ONEills Delia 703

• Confirmed bred to Bull Group #1

BEPD	WEPD	YEPD	MILK
+3.2	.51	+38	.44
CW	REA	SB	
+26	.39	+49	.36
			+134

listed on Page 16. Due to  calve May 1, 2020.

- Delia Scheckel A47 is a full sister to three breed-leading power bulls bred by Jim O'Neill, ONEills Astound, ONEills OMAI King 1083 and ONEills Dominant.
- Delia Scheckel A47 comes from one of the greatest Angus herds in the country, Oneill Angus Farm, whose genetics are intentionally kept out of the mainstream, never following fads, producing Angus cattle that have walked the walk and proven themselves at bull tests, steer futurities, in the show ring, and on the grid.
- Full brother, ONEills Astound, was Reserve Grand Champion and second high-selling bull at the 2012 Black Hills Stock Show at Rapid City, SD selling for \$15,000 to Ballou Angus Ranch in Wyoming.
- Another full brother, ONEills Dominant, sold for a \$36,000 valuation also to Ballou Angus in Wyoming.
- Her dam, ONEills Delia 730, is one of the most popular and powerful donors in the Oneill Angus herd.
- Her maternal granddam, ONEills Delia 715, is an Angus legend and arguably one of the most powerful cows in the breed, producing major herd sires ONEills Expedition, ONEills Lucky Boy and ONEills Power Force, whom all went on to sire many bull test winners throughout the country. Delia 715 has also produced over six donor cows retained by O'Neill Angus in Iowa.
- A47's sire, ONEills OMAI King, has been a wonderful, proven calving-ease sire, siring extra muscle and excellent carcass value. ONEills OMAI King is also a maternal brother to ONEills Renovation.



ONEills Delia 730 - Dam of Lot 12.



ONEills Omai King - Sire of Lot 12.



ONEills Astound - Full brother of Lot 12.

# Sire Group 1

## TOTAL HERD BULL PACKAGE



### SAV ALLEGIANCE 6277

REG: AAA 18579247  
OWNED BY J.J. SCHECKEL AND SCHAFF ANGUS VALLEY  
SERVES AS A J.J. SCHECKEL HERD BULL

A featured bull in the 2017 SAV Sale, he was a favorite and potential sale topper, with big time performance. He earned a weaning weight of 997 lbs, to ratio 109, against the stiffest competition of contemporary herd mates in the Angus business.

- Ranks in the Top 1% in the breed, for weaning and yearling growth EPD's.
- His dam, SAV Emblynette 1072, is a feminine and productive SAV Brand name daughter. She has a beautiful udder, and front posture phenotype. She has daughters retained in the SAV herd, and multiple high selling progeny in past sales. His grandmother is 2nd generation Elite pathfinder.
- His sire, SAV Resource 1441, is one of the most popular, proven, and powerful sires in the Angus breed. He was the #1 Semen revenue bull at Genex AI Stud, and has earned the respect of the entire Angus world. He represents the best of the timeless Rito 707 lineage, and brings to the table massive thickness, fleshing ability, muscle, and superb structure and feet.
- Featured bull in the 2017 SAV Sale
- Displays all the attributes you would expect from SAV, as described by Kelly Schaff. - He is a personal favorite, has a Perfect phenotype, top performance, stellar pedigree, and the maternal superior Emblynette cow family to back him



**SAV EMBLYNETTE 1072**  
Dam of SAV Allegiance 6277



Josh Scheckel  
JOSH@JJSHECKEL.COM  
21582 HWY 62 | BELLEVUE, IOWA 52031  
WWW.ANGUSCATTLEGENETICS.COM

## POWERFUL PEDIGREE. LINEBRED PREDICTABILITY.



### SAV ATMOSPHERE 6600

REG: AAA 18579214  
OWNED BY J.J. SCHECKEL AND SCHAFF ANGUS VALLEY  
Maternal Brother and double bred, to the 8 million dollar producer cow, SAV Blackcap May 4136, along with 6 Bulls working in Major AI Studs, including the \$200,000 SAV Angus Valley 1867.

- Line Bred, to the Blackcap May Family. Double bred to SAV May 2397.
- #1 Ribeye EPD Bull of the entire SAV 2015 calf crop.
- His Dam, SAV May 2397, is currently the #3 income producing cow, in SAV History, and has generated 1.7 Million in receipts, on 97 progeny, averaging \$17,539 in past SAV Sales. She also has 6 sons working in Major AI Stud Facilities, including the \$200,000 SAV Angus Valley 1867, and the \$92,500 SAV Brwe 8320, that will be maternal brothers to this Bull.
- His Sire, SAV Resource 1441, is one of the most popular, proven, and powerful sires in the Angus breed. He was the #1 Semen revenue bull at Genex AI Stud, and has earned the respect of the entire Angus world. He represents the best of the timeless Rito 707 lineage, and brings to the table massive thickness, fleshing ability, muscle, and superb structure and feet.
- Featured bull in the 2017 SAV Sale.



**SAV MAY 2397**  
Dam of SAV Atmosphere 6600



Josh Scheckel  
JOSH@JJSHECKEL.COM  
21582 HWY 62 | BELLEVUE, IOWA 52031  
WWW.ANGUSCATTLEGENETICS.COM

## BRED FOR POWER & PERFORMANCE



### SAV ELONGATE 7901

REG: AAA 18911204  
OWNED BY J.J. SCHECKEL AND SCHAFF ANGUS VALLEY  
FULL FLUSH BROTHER, TO THE RECORD SELLING  
\$800,000 BULL FROM THE 2018 SALE, SAV ELATION 7899  
• Earned a weaning weight of 950 pounds, which was 269 pounds above breed average.

- Ranks in the top of the breed for weaning and yearling growth EPD's.
- His phenomenal dam, SAV Blackcap May 1782, is a herdbull producer, and herd leader at Schaff. She earned a weaning ratio of 112 on 4 calves. She ranks as the #2 weaning EPD cow in the SAV Herd, next only to her daughter. Her powerful body type, udder quality, perfect feet, and consistent top production have given her elite status in the SAV herd.



**SAV BLACKCAP MAY 1782**  
Dam of SAV Elongate 7901



Josh Scheckel  
JOSH@JJSHECKEL.COM  
21582 HWY 62 | BELLEVUE, IOWA 52031  
WWW.ANGUSCATTLEGENETICS.COM

## IMPECCABLE PHENOTYPE. POWER in PERFORMANCE



### SAV IGNITER 7940

REG: AAA 18912917  
OWNED BY J.J. SCHECKEL AND SCHAFF ANGUS VALLEY  
Maternal brother to many Major AI Bulls, including the \$180,000 SAV Regard, the \$260,000 SAV Cutting Edge, SAV Priority, SAV Brand Name, SAV First Cut, SAV Robust, and SAV Reproduction.

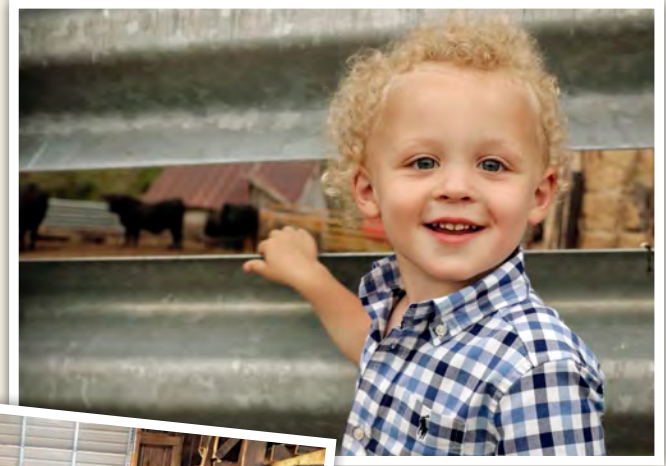
- Earned a weaning weight of 988 pounds, and a 365 day weight of 1,534 pounds
- Weaning weight was 307 pounds over breed average
- Ranks in the top of the breed for weaning and yearling growth EPD's.
- Featured bull in the 2018 SAV Sale
- Described by Schaff, as a sale headliner, with impeccable phenotype, performance, and cow power beyond compare. A real herd builder.



**SAV BLACKCAP MAY 5530**  
Dam of SAV Igniter 7940



Josh Scheckel  
JOSH@JJSHECKEL.COM  
21582 HWY 62 | BELLEVUE, IOWA 52031  
WWW.ANGUSCATTLEGENETICS.COM



# The J.J. SCHECKEL SALE

## December 3, 2019

on



*She Sells!*



▲ SAV Blackcap May 4136

### SAV Blackcap May 4553

17893601

One of the best, direct daughters of the 9 million dollar producer and breed legend, SAV Blackcap May 4136.



*She Sells!*



▲ Lady Kelton 5551

### Legends Miss Kelton 436

17888198

One of the few ever in Existence! Full sister to breed-leading AI bull, AAR Ten X. Direct daughter of AAR Lady Kelton 5551.



*She Sells!*

▲ SAV Erica 3174

Her progeny average \$10,750 each.



*She Sells!*

▲ SAV Emblynette 3394

Past SAV Donor, No. 2 IMF and No. 5 Yearling Weight, in entire SAV Calf crop.



*She Sells!*

▲ SAV Emblynette 3530

Maternal sister to past Lot 1 bulls at SAV Sale.

*Also selling several more top cows from Schaff Angus Valley, along with several select young heifers and embryos.*

*For more information contact:*



**Josh Scheckel / President**

J.J. Scheckel Corporation  
21582 Hwy 62 • Bellevue, Iowa 52031

josh@jjscheckel.com • www.AngusCattleGenetics.com  
Office 563-872-4112