

## Reach Early Learning (EL) Response Plan to Positive COVID 19 Case

In order to prevent the spread of COVID-19, planning ahead is key. To ensure a safe and rapid scale-up of childcare services, the Reach EL will include routine staff hand hygiene, disinfection of the workplace, and reduction in the number of staff and children per shift to comply with CDC (Centers for Disease Control and Prevention) guidelines.

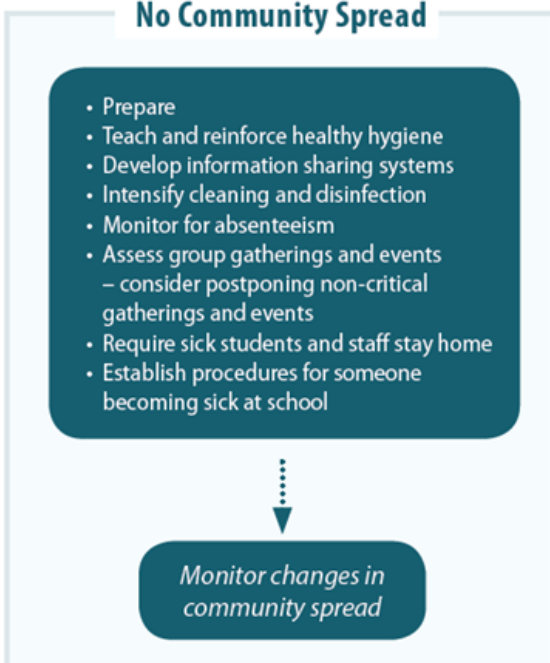
Reach EL is following the CDC guidelines and their plan is in alignment with the CDC recommendations.

### School Decision Tree

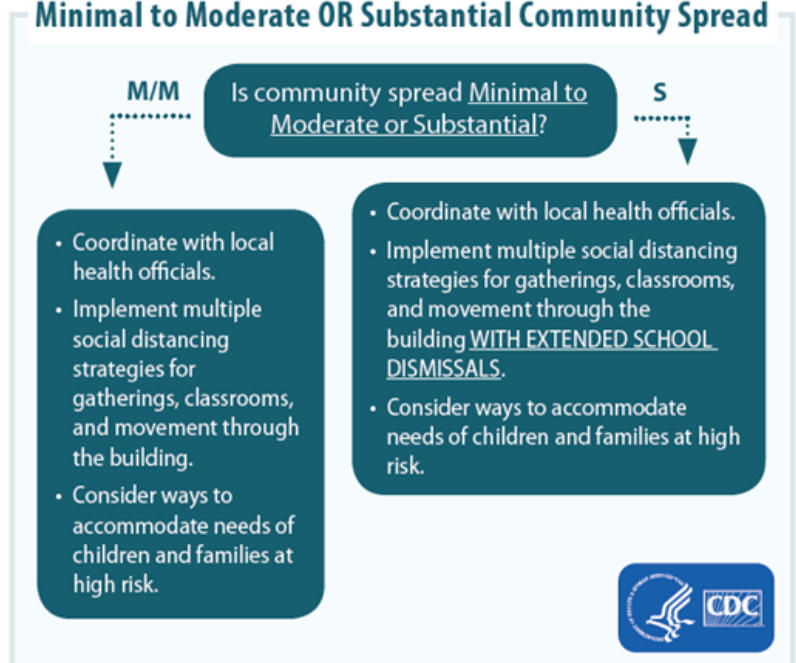
#### All Schools Regardless of Community Spread



#### No Community Spread



#### Minimal to Moderate OR Substantial Community Spread





## Reach Early Learning (EL) Response Plan to Positive COVID 19 Case

### High Level Plan if someone is or becomes sick at Reach EL<sup>1</sup>:

- An isolation room or area (such as a cot in a corner of the classroom) has been identified that can be used to isolate a sick child.
- Reach EL is ready to follow CDC guidance on how to [disinfect your building or facility](#) if someone is sick.
- If a sick child has been isolated in the Reach EL facility, REACH EL will clean and disinfect surfaces in the isolation room or area after the sick child has gone home.
- If COVID-19 is confirmed in a child or staff member Reach EL will:
  - Close off areas used by the person who is sick.
  - Open outside doors and windows to increase air circulation in the areas, if possible.
  - Wait up to 24 hours or as long as possible before you clean or disinfect to allow respiratory droplets to settle before cleaning and disinfecting.
  - Clean and disinfect all areas used by the person who is sick, such as offices, bathrooms, and common areas.
  - If more than 7 days have passed since the person who is sick visited or used the facility, additional cleaning and disinfection is not necessary.
    - Continue routine cleaning and disinfection.
- Reach EL will work with the Local and/or State Health Department.

### When a confirmed case has entered the Reach EL Facility, regardless of community transmission:

Reach EL may institute a short-term closure procedure regardless of community spread **if an infected person has been in a school building**. The following steps will be followed at Reach EL:

1. **Coordinate with local health officials.** Once learning of a COVID-19 case in someone who has been in the Reach EL facility, Reach EL leadership will immediately notify local health officials. These officials will help administrators determine a course of action for the pre-school.
2. **Communicate with staff, parents, and students.** Reach EL will communicate a possible COVID-19 exposure and any required dismissal decisions will be communicated in coordination with local health officials' recommendations/requirements. This communication to the school community should align with the communication plan in the school's emergency operations plan. In such a circumstance, it is critical to maintain confidentiality of the student or staff member as required by the Americans with Disabilities Act and the Family Education Rights and Privacy Act.

---

<sup>1</sup> <https://www.cdc.gov/coronavirus/2019-ncov/community/schools-childcare/guidance-for-childcare.html>



## Reach Early Learning (EL) Response Plan to Positive COVID 19 Case

3. **Dismiss students and most staff in the affected classroom for at least 72 hours (3 days).** This initial short-term dismissal allows time for the local health officials to gain a better understanding of the COVID-19 situation impacting the pre-school. This allows the local health officials to help the pre-school determine appropriate next steps, including whether an extended dismissal duration is needed to stop or slow further spread of COVID-19. This coordination with local health officials will help Reach EL determine the best course of action for the pre-school students, staff and families such as:
  - Local health officials' recommendations for the scope (e.g., a single classroom, entire school) and duration of school dismissals will be made on a case-by-case basis using the most up-to-date information about COVID-19 and the specific cases in the community.
  - During school dismissals, also cancel school-based afterschool programs, and large events (e.g., special events, field trips).

Reach EL will discourage staff, students, and their families from gathering or socializing anywhere. This includes group child-care arrangements, as well as gathering at places like a friend's house, a favorite restaurant, or the local shopping mall.

4. **Clean and disinfect thoroughly.** Reach EL will close off areas used by the individuals with COVID-19. The following steps will be taken by Reach EL:
  - Wait as long as practical before beginning cleaning and disinfection to minimize potential for exposure to respiratory droplets. If possible, wait up to 24 hours before beginning cleaning and disinfection.
  - Open outside doors and windows to increase air circulation in the area, if possible.
  - Cleaning staff should clean and disinfect all areas (e.g., offices, bathrooms, and common areas) used by the ill persons, focusing especially on frequently touched surfaces.
  - If surfaces are dirty, they should be cleaned using a detergent or soap and water prior to disinfection.
  - For disinfection most common EPA-registered household disinfectants should be effective. A list of products that are EPA-approved for use against the virus that causes COVID-19 is available [here](#). Additional information on cleaning and disinfection of community facilities such as schools can be found on [CDC's website](#). Follow the manufacturer's instructions for all cleaning and disinfection products (e.g., concentration, application method and contact time, etc.).



## Reach Early Learning (EL) Response Plan to Positive COVID 19 Case

5. **Make decisions about extending the school dismissal.** Temporarily dismissing pre-school program is a strategy to stop or slow the further spread of COVID-19 in communities.
  - During school dismissals (after cleaning and disinfection), Reach EL may stay open for staff members (unless ill) while students stay home. Keeping the Reach EL facility open: a) allows teachers to develop and deliver lessons and materials remotely, thus maintaining continuity of teaching and learning; and b) allows other staff members to continue to provide services and help with additional response efforts. Decisions on which, if any, staff should be allowed in the facility will be made in collaboration with local health officials.
  - **Reach EL will work in close collaboration and coordination with local health officials to make dismissal and large event cancellation decisions.** Schools are not expected to make decisions about dismissal or canceling events on their own. School dismissals and event cancellations may be extended if advised by local health officials. The nature of these actions (e.g., geographic scope, duration) may change as the local outbreak situation evolves.
  - Reach EL leadership will seek guidance from local health officials to determine when students and staff should return to schools and what additional steps are needed for the pre-school community. In addition, students and staff who are well but are taking care of or share a home with someone with a case of COVID-19 should follow instructions from local health officials to determine when to return to school.
  
6. **Implement strategies to continue education and related supports for students.**
  - Reach EL will work within the local requirements to potentially offer and implement e-learning options with our teaching staff. Reach EL will coach and encourage parents to provide the appropriate adult supervision while children are using distance learning approaches.
  - Reach EL will consult with relevant state or local partners to determine if a waiver is needed for state requirements of a minimum number of in-person instructional hours or school days (seat time) as a condition for funding.