

SPEAKER SHEET

Christine Robinson, RMCP

Writer and Keynote Speaker

✉ Christine@ResourceManagementInTheWild.com

🌐 www.ResourceManagementInTheWild.com

CONNECT



AN INTRODUCTION

Christine Robinson, the Founder of Resource Management In The Wild, leverages her extensive experience to empower professionals and organizations through thought leadership and keynotes. She has led national teams, implemented firmwide functions, established international joint ventures, and worked within a Big 4 firm.

Christine's speaking audiences have included professional conferences, universities, and women's empowerment groups.

Christine is a Resource Management expert, an award-winning speaker, and a mother of six. She was recognized as one of the top leaders in the Philadelphia Business Journal's 40 Under 40 List for her performance and community contributions.

A first-generation college student, working mother, and a Latina, Christine is passionate about supporting women and underserved families. Her philanthropic endeavors have garnered widespread accolades and national acclaim.



WORKING MOTHER



The New York Times



Courier Times

BOOK CHRISTINE TO SPEAK

Christine is an authority on workforce planning, working parenthood, and women in leadership. She is a sought-after speaker, panelist and guest expert for conferences, workshops, TV news programs, and podcasts. A perfect blend of relatable and captivating, Christine's presentations are tailored to your audience.

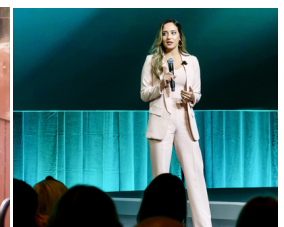
“ WHAT PEOPLE SAY

Christine is a genuine thought leader, with infectious enthusiasm, and innovative solutions to complex problems - Global Director

Christine inspired me as she recounted how she grew as a mom and business person - Entrepreneur

SPEAKING TOPICS

- Strategic Workforce Planning
- Productivity
- Burnout Prevention
- Workforce Dynamics
- Work / Life Intersection
- Women in Leadership
- Working Motherhood
- Career Breaks



CONTACT

🌐 www.ResourceManagementInTheWild.com

✉ Christine@ResourceManagementInTheWild.com