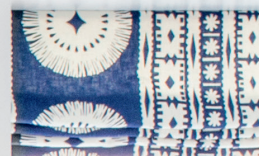




A Jersey Shore bungalow is revamped into a California-style beach house without losing its close-quarter coziness.

TEXT & STYLING CHARLOTTE SAFAVI  
PHOTOGRAPHY RAQUEL LANGWORTHY



SMALL-SCALE  
*spectacular*



**OPPOSITE** In the kitchen's eat-in area, a substantial beaded wood chandelier, visible from outside, offers wow factor. "I wanted a statement piece for the whole house," says interior designer and homeowner Stephanie Kraus. "It had to be big, yet the right height to work with our eight-foot ceilings." A laid-back combination of a wooden trestle table, bentwood dining chairs and slipcovered end chairs pops against the newly redone crisp white-on-white kitchen.

**DESIGN**, Stephanie Kraus Design, stephaniekrausdesigns.com; Decorator's White CC-20 **WALL PAINT** (throughout, except bathroom), Benjamin Moore; **DINING TABLE & CHAIRS**, RH; **CHANDELIER**, Made Goods; **RUG**, Stanton Carpet.

**ABOVE** The remodelled L-shaped kitchen features simple recessed-panel white cabinets with nautically inspired polished nickel pulls. In place of the former side door, a row of open shelves was added against the new subway tile backsplash. The countertop is made from Carrara marble. For continuity, the standout designer Roman shade fabric is repeated in the living area directly across.

**APPLIANCES**, GE Appliances; **FAUCET**, Grohe.

**RIGHT** The small vacation home required smart space solutions. In addition to bunk beds in the kids' rooms, Stephanie incorporated this pullout sofa in the living area to accommodate guests. Above it, the ruffle-beaded mirror makes a visual splash.





White walls make a crisp backdrop for the sandy-hued textures on display in the living area, from the round wooden side table to the graphic polyester indoor-outdoor rug. Also ebullient in the pale setting is the medley of blue and white textiles, from the toss cushions to the artwork to the Roman shade.

**SOFAS**, Lee Industries; **COFFEE TABLE**, Oomph; **ARMCHAIR FABRIC**, Zinc Textile; **RUG**, Stanton; **TOSS CUSHIONS**, Danielle Oakey Shop; **ARTWORK**, Gypsy Lane Home; **VASE**, HomeGoods.



**LEFT & ABOVE** Tight spaces call for capitalizing on storage in unexpected spots, and in the master bedroom that means using a mismatched multi-drawer bedside dresser and nightstand. The rattan headboard, coastal artwork and reclaimed wood lamp

base are all about the beach, as is the striped bedding, which calls to mind breezy skies and calm seas. **HEADBOARD**, Serena & Lily; **NIGHTSTAND**, Bungalow 5; **TABLE LAMP**, Regina Andrew; **ROMAN SHADE FABRIC**, Kravet Canada; large **LUMBAR CUSHION**, HomeGoods.

“I’ve been spending summers at the Jersey Shore since I was a kid,” recalls homeowner and interior designer Stephanie Kraus, adding, “I even met my husband here.” First came love, then came marriage, and three kids later, the cottage. “We had to continue the Jersey Shore tradition,” she says.

The diminutive Kraus family cottage was built in the 1970s – a mere 1,200 square feet of living space with three tiny bedrooms and one-and-a-half baths. None of this was a deterrent when the couple purchased it in 2015. “It’s one of the few remaining original bungalows left in the area,” says Stephanie. “We were drawn to that, and we loved its potential to become a small, easy-to-maintain vacation home where our family could summer together.”

Stephanie oversaw minor but important renovations: The wall separating the kitchen and family room came down, creating a larger open living space. The front window and French door were replaced with double sliding glass doors, bringing in natural light and connecting indoors and out via a newly expanded deck. “We closed off an unnecessary side door in the kitchen, giving us space for additional shelves and cupboards,” says Stephanie of the newly remodelled kitchen and its white recess-panelled cabinetry. Throughout the home, the walls, ceiling and trim were



A graphic wallpaper adds energy and verve to this tiny bathroom. The navy blue is picked up in the lacquered mirror that has a practical little ledge. A basket holds extra towels and toiletries.

**VANITY**, The Home Depot; **SCONCE**, RH.



**LEFT** One full bath (plus an outdoor shower), meets the family's needs during the summer holidays. Stephanie introduced a new vanity and refreshed the walls with sky-toned paint. The blues of the dotted shower curtain are repeated in the botanical-patterned Roman shade, which is edged with whimsical pompom trim.

Blue Horizon SW 6497 **WALL PAINT**, Sherwin-Williams; **VANITY**, The Home Depot; **SCONCE**, RH.

**ABOVE** The boys' room has a distinct nautical vibe, from its shipshape dark wooden bunkbeds to its blue-and-white striped Roman shades and armchair. The leather pouffe is a floater and can be pulled into the living area if an additional perch is needed. The fan-style light fixture has an industrial feel.

**TABLE LAMP**, Robert Abbey; **POUFFE**, Wayfair.ca; **ROMAN SHADE FABRIC**, Primavera; **RUG**, Knots & Weaves.

Painted in fresh white, a pleasing contrast to the new driftwood-look laminate floors.

With a crisp backdrop set, Stephanie turned her attention to furnishings. "For decorating, I wanted a clean and casual California beach cottage look," she says. Translation: "white slipcovers and performance fabrics with a little fun pattern mixed in." Of the palette, the designer says, "I favoured whites and blues – from navy to aqua – to keep it coastal but not overly nautical." To balance all the cool tones, Stephanie worked in organic wooden pieces like the dining table and chairs and the oversized beaded chandelier.

*"Most of the smaller beach bungalows have been torn down and replaced with bigger homes. We love that our house still has its original footprint."*



**LEFT** A highly textured pouffe set beneath a bright and graphic on-theme print makes a carefree summery statement. **THROW**, Wayfair.ca.

**ABOVE** White spindle details make the girl's room bunkbeds feel crisp and pretty, as does the custom fringed aqua Roman shade. The natural rug adds another organic layer and playful geometry to the small space, while fuchsia pillow shams punch up the palette.

**BEDDING**, Garnet Hill; **RUG**, Serena & Lily.



"I also integrated lots of texture into my design – including rattan, grasscloth, raffia and jute to add both warmth and interest," she says.

The three bedrooms (a girl's, a boys' and a master) don't hold much more than bunk beds and dressers, but that's of no concern to the Krauses. Most of their waking hours are spent at the beach or with the family anyway. "Our little cottage forces us to spend a lot of quality time together. It really inspires family closeness," says Stephanie. "I think that's how summers at the beach should be spent. We love it!"

**FAR LEFT & ABOVE** Black-and-white striped awnings deliver stylish shade, when needed, to this Avalon, N.J., beach home's newly enlarged deck, which is arranged with dining and lounging areas for entertaining. Red accents bring a smart touch to the sophisticated navy, white and grey resin wicker furnishings.

Teak **COFFEE TABLE**, Elk Group International; **TOSS CUSHIONS** (except on hanging chair), Gypsy Lane Home; **TOSS CUSHION** (on hanging chair), Danielle Oakley Shop; **PLANTERS**, RH; **LANTERNS**, Crate and Barrel.

FOR SOURCES, SEE OUR WORKBOOK