

CORNER STONE GENETICS - 6th ANNUAL

Online **ANGUS** Production Sale

Sale Hosted by
www.AngusLive.com



Sale Ends 11.27.20 - 7pm CST



SAV MADAME PRIDE 6625



SAV MADAME PRIDE 7088



SAV MADAME PRIDE 6501



SAV BLACKCAP MAY 2667



SAV POLLY 9973



SAV EMBLYNETTE 4585



SAV EMBLYNETTE 2007

FRIDAY | NOVEMBER 27 | 2020

Online **ANGUS** Production Sale

FRIDAY | NOVEMBER 27 | 2020
SALE ENDS 7PM CST

Sale Hosted by
www.AngusLive.com



SALE DAY PHONES:

(614) 546-9603 Ashley and Dan Hutchins

(816) 516-1309 Jeremy Haag

TERMS: All bidding and payments are in US Dollars. Accepted payment forms are: Corporate or personal check, cashier's check, money order, Visa, Master Card, and Discover all immediately negotiable. 5% Credit Card convenience charge will be placed on all credit card purchases (Accepted - Visa, Master Card, and Discover). All payments are to be made to Angus Live - And Sent To - PO BOX 457 Smithville, MO 64089. Late fees are subject to a 15% finance charge after the seventh day. A fee of \$50 will be assessed on all late payments or returned checks and the bidder will be denied access to future auctions. Payments by credit card must be called in to office at the conclusion of the sale - Angus Live (816) 516-1309 to complete this process by phone. There are **NO BUYERS PREMIUMS** in effect for this auction.

CONDITIONS: Any person placing bids on items in a specific auction agrees to these terms and conditions and understands that, by placing bids, they are entering into a binding contract between themselves and the seller(s) and that they will be held financially responsible for their actions. Angus Live acts as an agent between buyer and seller and may not be held responsible for any livestock merchandise. It is clear that Angus Live and representatives act only as a means between buyer and seller, and may not be held liable, financially or otherwise, for any failure on the part of the same to fulfill any obligations set forth in the sale or for the truths of any warranties expressed or implied. The information stated in the catalog has been prepared by sale management from the information provided by the seller(s) and is assumed to be fully accurate as presented to us. The sales of Angus breeding cattle will sell under the same standard and conditions of the American Angus Association.

INVOICING: An invoice with payment instructions will be sent to new buyer registered by e-mail at the close of bidding and sale. If you do not receive invoice by e-mail within 48 hours following the close of the auction please contact (816) 532-0811. Failure to complete the payment terms as stated above will result in forfeiture of animals purchased and immediately reported to the Credit Bureau. Be sure you are capable of paying immediately and realize your bids are not based on financing. Angus Live reserves the right to charge the entire purchase price and late fees to the credit card on file if payment is not made in the seven days after the close of the auction.

TRUCKING: Each buyer is responsible for making their own trucking arrangements thru seller or Angus Live. Trucking arrangements need to be made prior to or immediately following the sale. NO animal(s) will be delivered until payment is made in full.

HEALTH PAPERS: Furnished upon request for each animal. Any exportable animal(s) will need special testing and will be at buyer's expense unless otherwise discussed with seller.

EMBRYO/SEMEN: These item(s) will be sold in terms of so much times the number of units selling. Buyer on all embryos and semen will be responsible for all shipping cost. Embryos and semen sold will be noted if they are exportable to other countries in the footnote section of each lot.

LIABILITY: Angus Live is not responsible for injury or accidents. Animal(s) become property of the new buyer when sold. Following the auction we strongly recommend that all new owners take out mortality insurance on their purchases. Angus Live nor seller cannot be held responsible for the health or condition of animals after the conclusion of animal(s) being sold. Angus Live assumes no liability for accidents or injuries that occur. All Angus breeding stock will sell under standard terms and conditions of the American Angus Association.

TO REGISTER FOR A BIDDER NUMBER GO TO: www.anguslive.com and scroll down to the bottom of our home page, click on the "Register to Bid" button and follow the prompts.

BIDDING ADDRESS: www.anguslive.com



www.AngusLive.com

COMMENTS FROM THE SALE MANAGER

On behalf of Angus Live, it is certainly a pleasure to be working with Dan and Ashley Hutchins on their 6th Annual Online Production Sale event. This sale is backed by breed-leading genetics that are heavily influenced from the Schaff Angus Valley program. Dan and his family have built a premier program with cattle that have added eye appeal, performance and overall quality.

As you flip through this catalog, you will find an array of some of the very best families in the country including the Blackcap Mays, Elbas, Emblynettes, Madame Prides and an array of other featured families that have been dominant across the country with numerous high sellers and sale features. This year's offering is second to none.

If you have any questions, please feel to contact Ashley and Dan Hutchins at (614) 546-9603 or Angus Live at (816) 516-1309.

Sincerely,
Jeremy Haag
Jeremy Haag(816) 516-1309



Jeremy Haag

CORNER STONE GENETICS

Ashley and Dan Hutchins

22232 State Rt 347, Raymond, OH 43067

(614) 581-2874 Home | (614) 546-9603 Cell | cornerstonegenetics@aol.com

We hope after you fill your stomach with a great Turkey dinner, that you log on to WWW.ANGUSLIVE.COM and review the great set of SAV Influenced Females. We feel the females represent the very best we have to offer out of our SAV influenced maternal lines. Our daughters of SAV Blackcap May 4136, SAV Blackcap May 5530, SAV Blackcap May 7306, SAV Blackcap May 8962, SAV Elba 1094, SAV Elba 1811, SAV Duke Girl 57, SAV Madame Pride 5290, SAV Madame Pride 0075 and many more will be irreplaceable. However, with the advancements in embryo technology, we have been able to secure a supply of embryos from these fabulous donors that will propel us into the future and allow us to offer these donors today to YOU. We run our program to be lean and efficient, to exploit the very best of performance, phenotype, carcass merit, and maternal characteristics into the soundest, free-moving package available; this can be exemplified with our winning past Bull Test and setting the bar with our AI Featured herd sires leased from our Annual Bull Sale.

The Donor Females offered this year are 2nd to none and would challenge any program to offer donors with the production history, power and performance, and Lineage as we are offering this year. With that Being said the Bred heifer division of this sale may prove to be the true hidden gem offering a lifetime of production and achievement.

Once again, thank you for the opportunity to earn your business,

Ashley and Dan Hutchins Family





SAV MADAME PRIDE 7088
She sells as Lot 1



SAV MADAME PRIDE 0075
Dam of Lot 1

1 SAV Madame Pride 7088

DOB: 2/21/2017 Cow 18770405 Tattoo: 7088

SAV RESOURCE 1441 ##*17016597	Rito 707 of Ideal 3407 7075	RR Rito 707	\$ M 40
	SAV Blackcap May 4136	Ideal 3407 of 1418 076 SAV 8180 Traveler 004 SAV May 2397	
SAV MADAME PRIDE 0075 13592871	SAF 598 Bando 5175	Bon View Bando 598	\$ B 135
	SAV Madame Pride 8264	SAF Royal Lass 1002 Leachman Right Time SAR Cruzs Pride 8597	\$ C 215

CED	BW	WW	YW	MILK	CWT	MARB	REA
1	4.2	70	126	22	63	0.12	0.72

• One of the All-Time Great Phenotype females to leave our Donor and Flushing Program with the ability to move any program to the next Level. She is out of the famous SAV Madame Pride 0075, who has more than \$5.2 million in direct progeny sales with 148 progeny averaging \$34,454 and 41 daughters retained in the Schaff Angus Valley program. She is a maternal sister to the all-time, high-selling bull for \$1.51 million, SAV America 8018, out of the now-deceased Pathfinder sire and \$110,000 SAV Resource 1441. This female is also a maternal sister to the \$235,000 Super Charger; the \$90,000 Accelerated Genetics AI sire, SAV Registry 2831; the \$400,000 top selling heifer in 2013 sale, and maternal sister to the \$150,000 SAV Madame Pride 0413. A maternal sister to 7088 sold to Troy Hill Angus for \$13,500, as a sale feature from our 2018 Production Sale. She was the 5th YW heifer of her calf crop with a ratio of 112, and her bull calf will be a feature in the 2021 SAV bull sale. Reserving the right to flush for eight future embryos at buyer's convenience and seller's expense.

• Safe to the \$70,000 SAV AJAX 8885. Due 5/31/2021.



SAV AMERICA 8018
Maternal brother to Lots 1



SAV SUPERCHARGER 6813
Maternal brother to Lot 1

1A SAV Madame Pride 7088 Embryos

4 Embryos by the \$300,000 SAV Bloodline 9578

1AA SAV Madame Pride 7088 Embryos

4 Embryos by the \$300,000 SAV Bloodline 9578

• High Selling sire of the 2020 SAV Bull and Female Sale, the Sire is related to many of the females in this sale.

1B SAV Madame Pride 7088 Embryos

4 Embryos by the \$750,000 SAV President 6847

1BB SAV Madame Pride 7088 Embryos

4 Embryos by the \$750,000 SAV President 6847

• Embryos would be 3/4 siblings to the \$1.51 million dollar SAV America 8018



SAV MADAME PRIDE 6501
She sells as Lot 2



SAV MADAME PRIDE 5290
Dam of Lot 2

2 SAV Madame Pride 6501

DOB: 1/4/2016 Cow #*18523149 Tattoo: 6501

SAV RENOWN 3439
##*17633839

Rito 707 of Ideal 3407 7075
SAV Blackcap May 4136

RR Rito 707
Ideal 3407 of 1418 076
SAV 8180 Traveler 004
SAV May 2397

SAV MADAME PRIDE 5290
*15108042

SAV 8180 Traveler 004
SAV Madame Pride 0075

Sitz Traveler 8180
Boyd Forever Lady 8003
SAF 598 Bando 5175
SAV Madame Pride 8264

\$ M
51
\$ W
59
\$ B
123
\$ C
211

CED	BW	WW	YW	MILK	CWT	MARB	REA
-3	4	69	118	24	49	0.12	0.74

• A favorite Donor female whose added dimension, flawless phenotype, and maternal power, who is going to remain a staple in our program through her embryo production. She was the #2 WW and #3 YW heifer of her calf crop. Her famous dam, SAV Madame Pride 5290, has \$1.5 million in progeny sales at Schaff Angus Valley with 118 progeny averaging \$12,451 and 22 daughters retained in the SAV program including SAV Madame Pride 0290, who is the #1 marbling female of the 2010 calf crop. Dam reigns among the 12 top income-producing cows in the history of the SAV program. The granddam of this outstanding female is the famous SAV Madame Pride 0075, who has more than \$5.2 million in direct progeny sales with 148 progeny averaging \$34,454 and 41 daughters retained in the SAV program. This female's dam is a maternal sister to the \$235,000 Super Charger, the \$90,000 Accelerated Genetics SAV Registry 2831, the \$400,000 top-selling heifer in 2013 sale, and is a maternal sister to the \$150,000 SAV Madame Pride 0413. A maternal sister sold to Troy Hill Angus for \$13,500 as a sale feature from our 2018 production sale.

• AI bred to the \$750,000 SAV PRESIDENT 6487. Due 1/30/2021.

2A SAV Madame Pride 6501 Embryos

4 Embryos by \$480,000 SAV Raindance 6848 (sexed female)

2B SAV Madame Pride 6501 Embryos

4 Embryos by SAV Extension 6856 (sexed female)

2AA SAV Madame Pride 6501 Embryos

4 Embryos by \$480,000 SAV Raindance 6848 (sexed female)

2BB SAV Madame Pride 6501 Embryos

4 Embryos by SAV Extension 6856 (sexed female)



SAV MADAME PRIDE 6650
She sells as Lot 3



SAV MADAME PRIDE 9803
Maternal sister to Lot 3

3 SAV Madame Pride 6650

DOB: 2/25/2016 Cow 18542162 Tattoo: 6651

CONNEALY BLACK GRANITE #*17028963	Connealy Consensus 7229	Connealy Consensus	\$ M				
	Eura Elga of Conanga 9109	Blue Lilly of Conanga 16		62			
SAV MADAME PRIDE 5290 *15108042	SAV 8180 Traveler 004	SAV Bismarck 5682	\$ W				
	SAV Madame Pride 0075	Eura Cal of Conanga 568	62				
		Sitz Traveler 8180	\$ B				
		Boyd Forever Lady 8003	128				
		SAF 598 Bando 5175	\$ C				
		SAV Madame Pride 8264	228				
CED	BW	WW	YW	MILK	CWT	MARB	REA
9	1.7	59	97	26	1+42	1+.39	1+.48

• Another tremendous 5290 daughter that we are proud to offer for your appraisal. Her flawless phenotype will help improve any herd. Her famous dam, SAV Madame Pride 5290, has \$1.5 million in progeny sales at Schaff Angus Valley with 118 progeny averaging \$12,451 and 22 daughters retained in the SAV program including SAV Madame Pride 0290, who is the #1 marbling female of the 2010 calf crop. Dam reigns among the 12 top income-producing cows in the history of the SAV program. The granddam of this outstanding female is the famous SAV Madame Pride 0075, who has more than \$5.2 million in direct progeny sales with 148 progeny averaging \$34,454 and 41 daughters retained in the SAV program. This female's dam is also a maternal sister to the \$235,000 Super Charger, the \$90,000 Accelerated Genetics SAV Registry 2831, the \$400,000 top-selling heifer in 2013 sale, and is a maternal sister to the \$150,000 SAV Madame Pride 0413. A maternal sister sold to Troy Hill Angus for \$13,500 as a sale feature from our 2018 production sale.

• AI bred to the \$460,000 SAV RAINFALL 6846. Due 2/3/2021.



SAV MADAME PRIDE 0290
Maternal sister to Lot 3



SAV MADAME PRIDE 2552
Maternal sister to Lot 3



SAV MADAME PRIDE 6625
She sells as Lot 4



SAV RENOVATION 6822
\$47,500 flush brother to Lot 4

4 SAV Madame Pride 6625

DOB: 2/3/2016 Cow 18554856 Tattoo: 6625

SAV RENOWN 3439
#**1763839

Rito 707 of Ideal 3407 7075
SAV Blackcap May 4136

RR Rito 707
Ideal 3407 of 1418 076
SAV 8180 Traveler 004
SAV May 2397

SAV MADAME PRIDE 0151
+*16638001

SAV 004 Density 4336
SAV Madame Pride 0075

SAV 8180 Traveler 004
SAV May 7238
SAF 598 Bando 5175
SAV Madame Pride 8264

\$ M
46
\$ W
42
\$ B
98
\$ C
173

CED	BW	WW	YW	MILK	CWT	MARB	REA
3	2.1	54	96	17	23	0.16	0.46

• This beautiful donor for us is a flush sister to the popular Semex Sire, SAV Renovation 6822, whose progeny look to be one of the lead off sire groups for the 2021 SAV Sale. Past daughters have sold to Allen Bros in Oregon and an SAV America 8018 featured heifer 2021 sale. Her beautiful dam by Density is flawless in terms of body type, udder and structural design and was selected by Paul Larsen as the \$37,500 top-selling cow in the 2015 Schaff Angus Valley sale and is a flush sister to the herd sires, SAV Sunrise 0060 and SAV Sunset 0257, and dam of the \$47,500 SAV Renovation 6822. Her granddam, SAV Madame Pride 0075, has more than \$5.2 million in direct progeny sales with 148 progeny averaging \$34,454 and 41 daughters retained in the SAV program. The dam of this female is a maternal sister to the \$235,000 Super Charger, the \$90,000 Accelerated Genetics SAV Registry 2831, the \$400,000 top-selling heifer in 2013 sale, and maternal sister to the \$150,000 SAV Madame Pride 0413.

• AI Bred to the \$175,000 SAV EMBLEM 8074. Confirmed with Sexed Heifer.

4A SAV Madame Pride 6625 Embryos

4 Embryos by SAV America 8018



SAV SUNRISE 0060
Flush brother to dam of Lot 4



SAV SUNSET 0257
Flush brother to dam of Lot 4



SAV MADAME PRIDE 1150
She sells as Lot 5

5 SAV Madame Pride 1150

DOB: 3/1/2011 Cow 16928523 Tattoo: 1150

SAV NET WORTH 4200 #14739204	SAV 8180 Traveler 004	Sitz Traveler 8180	\$ M				
	SAV May 2410	Boyd Forever Lady 8003		46			
SAV MADAME PRIDE 8283 16056409	SAV Bismarck 5682	SAF 598 Bando 5175	\$ W				
	SAV Madame Pride 1093	SAV May 6269	52				
		GAR Grid Maker	\$ B				
		SAV Abigale 0451	110				
		SAF 598 Bando 5175	\$ C				
		SAV Madame Pride 8264	189				
CED	BW	WW	YW	MILK	CWT	MARB	REA
7	2.5	50	91	31	26	0.33	0.28

• This fantastic female will be hard to let go of. She is one of our favorites for phenotype and power with her individual WW Ratio of 101 and YW ratio of 111 placing her as the #5 high heifer of the 2011 calf crop. Her progeny have a WW ratio of 104 and IMF Ratio of 111 on three head. Her famous dam has \$345,000 in progeny sales and a herd sire son selling to Accelerated Genetics for \$55,000 in the 2016 SAV Bull Sale.

• **Safe to the \$750,000 SAV PRESIDENT 6847. Due 12/20/2020.**



SAV MADAME PRIDE 8283
Dam of Lot 5



SAV MADAME PRIDE 1093
Granddam of Lot 5



SAV BLACKCAP MAY 2667
She sells as Lot 6



SAV BLACKCAP MAY 5530
Dam of Lot 6

6 SAV Blackcap May 2667

DOB: 1/25/2012 Cow #*17294186 Tattoo: 2667

SAV 707 RITO 9969 #*16417285	Rito 707 of Ideal 3407 7075	RR Rito 707	\$ M
	BR Polly 8077-472	Ideal 3407 of 1418 076 Papa Equator 2928 VDAR Polly 8077	
SAV BLACKCAP MAY 5530 #*15108209	BCC Bushwacker 41-93	Paramont Ambush 2172	\$ W
	SAV May 7238	RC Anita T Bando 918903 Leachman Right Time SAR Prospector May 9124	41
			\$ B
			131
			\$ C
			232

CED	BW	WW	YW	MILK	CWT	MARB	REA
-3	3.7	52	86	19	37	0.27	0.52

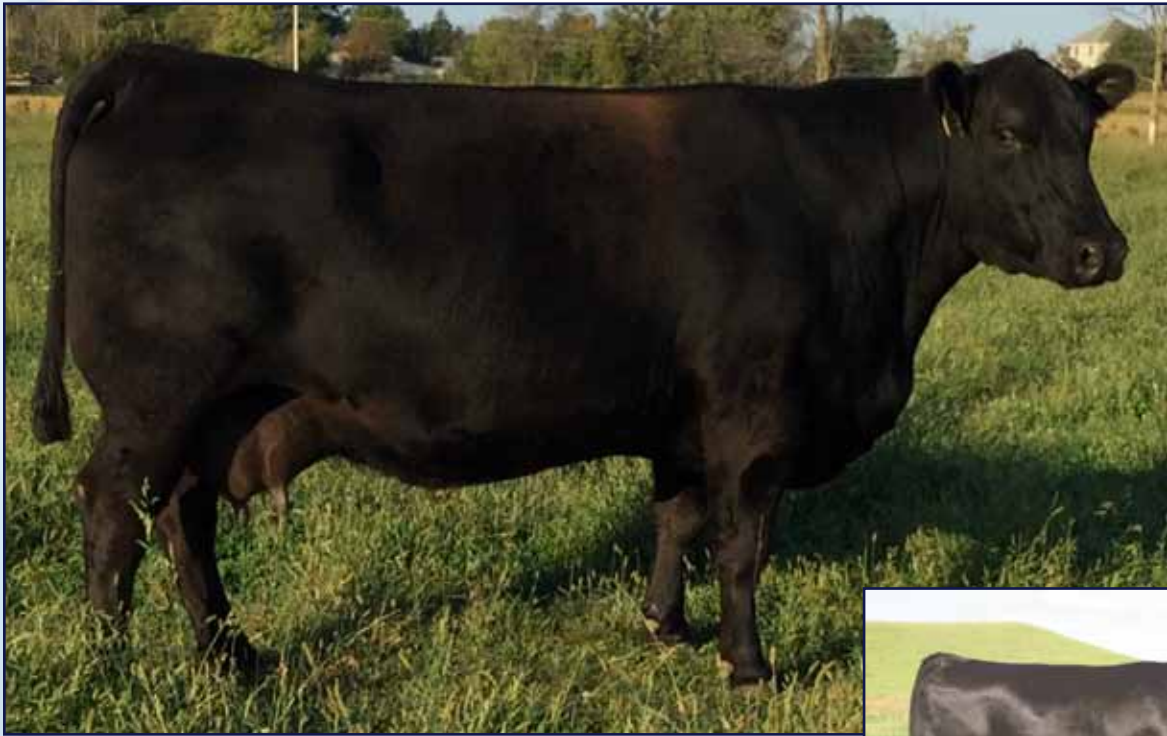
- A proven and featured donor for the Schaff Angus Valley and Corner Stone programs who offers a beautiful phenotype, pedigree, and production history. She has a featured son of SAV America for the upcoming 2021 bull sale, along with past progeny sales of \$25,000. SAV has retained one daughter who was the #3 IMF of the 2019 calf crop. Her maternal brother is the \$180,000 SAV Regard 4863 and full brothers, SAV Stunner 7006 and SAV Stud 7112, were features of the SAV Sale selling to Ingram Angus. Her iconic Pathfinder dam has earned \$1.9 million in direct progeny sales with 87 progeny averaging \$21,324, SAV Blackcap May 5530.
- **Safe to the \$175,000 SAV EMBLEM 8074. Due 5/19/2021.**

6A SAV Madame Pride 2667 Embryos
4 Embryos by SAV America 8018



SAV REGARD 4863
\$180,000 maternal brother to Lot 6





SAV POLLY 9973
She sells as Lot 7



BR POLLY 8077-472
Dam of Lot 7

7 SAV Polly 9973

DOB: 3/28/2009 Cow 16417331 Tattoo: 9973

RITO 707 OF IDEAL 3407 7075 13066860	RR Rito 707 Ideal 3407 of 1418 076	Rito N Bar Eriskay of Rollin Rock 3 Ideal 1418 of 8103 4286 Ideal 076 of 692 8375	\$ M 52				
BR POLLY 8077-472 14036558	Papa Equator 2928 VDAR Polly 8077	Papa Power 096 Papa Envious Blackbird 8849 VDAR Lucys Boy VDAR Polly 4027	\$ W 43				
			\$ B 112				
			\$ C 197				
CED	BW	WW	YW	MILK	CWT	MARB	REA
1	2.1	46	80	24	41	0.08	0.37

- Our featured Polly female who is a flush sister to the \$147,500 Performance Accelerated Genetics Sire, SAV Rito 7075 of 9969. She possesses the performance and phenotype that exemplifies the Rito 7075 genetics and the true maternal ability of the famed Polly line. She has six progeny averaging \$10,291 through past Schaff Angus Valley bull sales. Her full brother, SAV 707 Rito 9969, was selected by Little Goose Ranch for \$147,500 as the second top-selling bull in the 2010 SAV Sale and leased to Accelerated Genetics. She has eleven daughters retained in the SAV herd and 53 progeny amassing over \$516,750 in sales through SAV sales.

• **Sells Open and Ready to Flush**

7A SAV Polly 9973 Embryos

4 Embryos by \$750,000 SAV President 6847

7AA SAV Polly 9973 Embryos

4 Embryos by \$750,000 SAV President 6847

7B SAV Polly 9973 Embryos

4 Embryos by \$235,000 SAV Supercharger 6813

7C SAV Polly 9973 Embryos

3 Embryos by SAV Extension 6856 (sexed female)



SAV RITO 7075 9969
\$147,500 full brother to Lot 7



SAV POLLY 5506
She sells as Lot 3

8
SAV Polly 5506

DOB: 1/7/2015
Cow 18220637
Tattoo: 5506

SAV REGISTRY 2831 #+*17318928	Rito 707 of Ideal 3407 7075 SAV Madame Pride 0075	RR Rito 707 Ideal 3407 of 1418 076 SAF 598 Bando 5175 SAV Madame Pride 8264	\$ M 24
SAV POLLY 9813 +*16394686	SAV Heritage 6295 BR Polly 8077-472	CAR Duke 104 SAV Blackcap May 4136 Papa Equator 2928 VDAR Polly 8077	\$ W 35
			\$ B 149
			\$ C 217

CED	BW	WW	YW	MILK	CWT	MARB	REA
0	3.3	53	98	18	58	0.39	0.64

- A superb matron that is as attractive as she is long and powerful. Her past production has moved her to the donor pen. Her dam has a weaning record of 105 ratio on three calves and 14 progeny averaging \$11,589 in past Schaff Angus Valley sales to cowmen in eight states and Canada. A maternal sister was the Supreme Champion Overall Female at the 2016 ND Junior Angus Field Day and Grand Champion Angus Heifer at the 2016 Morton County Fair for Kourtney Schaff.
- **Safe to the \$100,000 SAV DOWNPOUR 8794. Due 1/1/2021.**



SAV POLLY 9946
\$42,500 maternal sister to the dam of Lot 8



SAV POLLY 9829
\$31,000 flush sister to Lot 8



SAV EMBLYNETTE 4585
She sells as Lot 9



SAV EMBLYNETTE 7566
Dam of Lot 9

9 SAV Emblynette 4585

DOB: 1/28/2014 Cow 17893635 Tattoo: 4585

SAV ANGUS VALLEY 1867 #*17016630	SAV Iron Mountain 8066	TC Gridiron 258	\$ M				
	SAV May 2397	SAV Madame Pride 3249	47				
SAV EMBLYNETTE 7566 +*15778925	SAV Net Worth 4200	SAF 598 Bando 5175	\$ W				
	SAV Emblynette 7261	SAV May 7238	43				
		SAV 8180 Traveler 004	\$ B				
		SAV May 2410	127				
		N Bar Emulation EXT	\$ C				
		SAV Emblynette April 1509	212				
CED	BW	WW	YW	MILK	CWT	MARB	REA
4	0.4	47	91	23	37	0.53	0.4

- One of the most unique breeding and phenotype donors offered in the sale. She has four progeny tallying \$36,750 in past Schaff Angus Valley sales and has a featured SAV America 8018 bull in the upcoming 2021 SAV Sale. She is a direct daughter of the famous 7566, who is a maternal sister to the current #1 Matron at SAV, SAV Emblynette 2369, the mother of past sale features such as the \$175,000 SAV Emblem 8074 and the 2020 high-selling bull, SAV Bloodline 9578.

- **Confirmed safe (Sexed Heifer) to the \$1.51 million SAV AMERICA 8018. Due 2/27/21.**

9A SAV Emblynette Embryos

4 Embryos by SAV America 8018



SAV EMBLYNETTE 2369
Maternal sister to Lot 9





SAV EMBLYNETTE 2588
She sells as Lot 10



SAV EMBLYNETTE 7261
Dam of Lot 10

10 SAV Emblynette 2588

DOB: 1/8/2012 Cow #*17296101 Tattoo: 2588

SAV 707 RITO 9969 #*16417285	Rito 707 of Ideal 3407 7075	RR Rito 707 Ideal 3407 of 1418 076	\$ M 36				
	BR Polly 8077-472	Papa Equator 2928 VDAR Polly 8077		\$ W 47			
SAV EMBLYNETTE 7261 #12819837	N Bar Emulation EXT	Emulation N Bar 5522 N Bar Primrose 2424	\$ B 143				
	SAV Emblynette April 1509	MA Rising Star SAV Jet Gal 548	\$ C 222				
CED	BW	WW	YW	MILK	CWT	MARB	REA
-3	3.4	52	94	28	I+45	I+.31	I+.53

- A treasured breeding piece female who is a current donor for Corner Stone and exemplifies the quality of the Emblynette family with stunning phenotype, depth of body, and length. Her past daughters have been featured females in our program and she will continue to provide influence through her embryo progeny. Her famous dam lived to the age of 19 years of age and was a long time donor female for SAV. A maternal sister to 2588 is the famous SAV Emblynette 7566, who has over \$450,000 in progeny sales and is the mother of SAV Emblynette 2369.

- **Sells Open and Ready to Flush.**



SAV EMBLYNETTE 7566
Maternal sister dam of Lot 10

10A SAV Madame Pride 7088

4 Embryos by SAV Rainfall 6846

- 3/4 sibling in blood to the \$300,000 SAV Bloodline 9578.

10B SAV Madame Pride 7088

2 Embryos by SAV Pedigree 4834

10C SAV Madame Pride 7088

2 Embryos by SAV Ten Speed 3022



SAV EMBLYNETTE 2007
She sells as Lot 11



SAV EMBLYNETTE 7229
\$11,000 dam of Lot 11

11 SAV Emblynette 2007

DOB: 2/18/2012 Cow 17249185 Tattoo: 2007

SAV 707 RITO 9969
#*16417285

Rito 707 of Ideal 3407 7075
BR Polly 8077-472

RR Rito 707
Ideal 3407 of 1418 076
Papa Equator 2928
VDAR Polly 8077

SAV EMBLYNETTE 7229
#15688219

SAV 8180 Traveler 004
SAV Emblynette 3325

Sitz Traveler 8180
Boyd Forever Lady 8003
SAF 598 Bando 5175
SAV Emblynette 7319

\$ M
41
\$ W
44
\$ B
134
\$ C
215

CED	BW	WW	YW	MILK	CWT	MARB	REA
1	3	51	92	26	47	0.2	0.32

- A powerhouse donor female who is a past donor for Schaff Angus Valley and currently Corner Stone Genetics. She has impressive udder quality and is a foundation-building female. She has had four progeny sell through past SAV sales totalling \$41,000 and averaging \$10,250. Two daughters were retained in the SAV program along with an outstanding SAV America bull calf born this year. Her dam was a Pathfinder donor with six progeny averaging \$11,125 and sold in the 2016 sale for the \$16,000.

• **Safe to the \$100,000 SAV LANDMARK 9148. Due 5/10/2021.**

11A SAV Emblynette 2007 Embryos

4 Embryos by SAV America 8018



SAV EMBLYNETTE 3325
Granddam of Lot 11



SAV EMBLYNETTE 7013
Daughter of Lot 11



SAV EMBLYNETTE 2583
She sells as Lot 12



SAV EMBLYNETTE 5483
\$250,000 maternal sister of Lot 12

- Another powerhouse female that will move any herd forward with maternally charged power. Her past sons and daughters have all been keepers and sought after in past CSG sales averaging \$5,500. Her maternal sister is the famous \$250,000 SAV Emblynette 5483 and the mother of the \$400,000 SAV International 2020. Expect greatness with coming calf.

• **Safe to CSG REMARKABLE 5506. Due 2/24/2021.**

12 SAV Emblynette 2583

DOB: 1/20/2012 Cow 17296096 Tattoo: 2583

SAV NET WORTH 4200
#14739204

SAV 8180 Traveler 004
SAV May 2410

Sitz Traveler 8180
Boyd Forever Lady 8003
SAF 598 Bando 5175
SAV May 6269

\$ M
49
\$ W
66
\$ B
131
\$ C
219

SAV EMBLYNETTE 7260
#12819836

N Bar Emulation EXT
SAV Emblynette April 1509

Emulation N Bar 5522
N Bar Primrose 2424
MA Rising Star
SAV Jet Gal 548

CED	BW	WW	YW	MILK	CWT	MARB	REA
6	2.8	60	101	34	41	0.66	0.39



SAV EMBLYNETTE 7260
Dam of Lot 12



SAV EMBLYNETTE 7415
Full sister to Lot 12



SAV EMBLYNETTE 6494
She sells as Lot 13



SAV EMBLYNETTE 0491
Dam of Lot 13

13 SAV Emblynette 6494

DOB: 1/1/2016 Cow 18523140 Tattoo: 6494

SAV TEN SPEED 3022
*17633563

AAR Ten X 7008 SA
SAV Madame Pride 1134

Mytty In Focus
AAR Lady Kelton 5551
SAV Bismarck 5682
SAV Madame Pride 9100

\$ M
53
\$ W
54
\$ B
123
\$ C
213

SAV EMBLYNETTE 0491
+*16703736

SAV Final Answer 0035
SAV Emblynette 7566

Sitz Traveler 8180
SAV Emulous 8145
SAV Net Worth 4200
SAV Emblynette 7261

CED	BW	WW	YW	MILK	CWT	MARB	REA
8	0.8	59	111	22	I+32	I+.53	I+.47

- One of the best EPD profiled and phenotyped females in the offering. Her awesome maternal abilities and perfect udder has led us to retain her past daughters into our herd. She will be a female who will take the herd she goes into to the next level. Her dam, SAV Emblynette 0491, has over \$460,000 in progeny sales including the \$110,000 SAV West River 2066.

• **Safe to CSG REMARKABLE 5506. Due 2/24/2021.**



SAV WEST RIVER 2066
\$100,000 maternal brother to Lot 13



SAV CHECKMATE 8158
\$60,000 same family as Lot 13



SAV EMBLYNETTE 4744
She sells as Lot 15



SAV EMBLYNETTE 6558
Dam of Lot 15

15 SAV Emblynette 4744

DOB: 2/20/2014 Cow 17948805 Tattoo: 4744

SAV ANGUS VALLEY 1867 #*17016630	SAV Iron Mountain 8066	TC Gridiron 258	\$ M
	SAV May 2397	SAV Madame Pride 3249	38
		SAF 598 Bando 5175	\$ W
		SAV May 7238	34
			\$ B
SAV EMBLYNETTE 6558 +*15465715	SAV 8180 Traveler 004	Sitz Traveler 8180	106
	SAV Emblynette 1181	Boyd Forever Lady 8003	\$ C
		SAF 598 Bando 5175	176
		Sav Emblynette Diamond 6377	

CED	BW	WW	YW	MILK	CWT	MARB	REA
1	3.6	50	90	19	32	0.16	0.49

- A stunning female who has impeccable phenotype and an outstanding udder along with maternal ability. Her past daughters have been featured through past SAV sales averaging \$4,000. Her grandam has past SAV progeny sales of over \$480,000 and represents several of the foundation Emblynettes in the production herd of SAV.

• **Safe to CSG REMARKABLE 5506. Due 4/10/2021.**



SAV EMBLYNETTE 6548
Flush sister to dam of Lot 15



SAV EMBLYNETTE 1181
Granddam of Lot 15



SAV ELBA 3512
She sells as Lot 16



SAV ELBA 5383
Granddam of Lot 16

16 SAV Elba 3512

DOB: 1/3/2013 Cow 17584156 Tattoo: 3512

RR Rito 707
RITO 707 OF IDEAL 3407 7075
13066860

Ideal 3407 of 1418 076

Rito N Bar
Eriskay of Rollin Rock 3
Ideal 1418 of 8103 4286
Ideal 076 of 692 8375

\$ M
57
\$ W
51
\$ B
90
\$ C
174

SAV ELBA 5383
15108227

SAV 8180 Traveler 004
SAV Elba 1094

Sitz Traveler 8180
Boyd Forever Lady 8003
SAF 598 Bando 5175
SAV Elba 7099

CED	BW	WW	YW	MILK	CWT	MARB	REA
4	1.3	50	85	22	28	-0.03	0.36

- A one-of-a-kind opportunity to acquire a direct daughter of Rito 7075 out of the \$90,000 featured ZWT donor, SAV Elba 5383. 3512 has five progeny averaging \$4,675 through past sales and one daughter retained in the herd. Her prolific granddam, SAV Elba 5383, has 12 daughters retained in the SAV herd and 38 progeny averaging \$10,092 in past SAV sales to cowmen in nine states.

• **Safe to \$100,000 SAV DOWNPOUR 8794. Due 1/21/2021.**

16A SAV Elba 3512 Embryos

3 Embryos by SAV Raindance 6848 (sexed female)



SAV ELBA 1094
\$100,000 granddam to Lot 16



SAV ELBA 3598
Full sister to Lot 16



CORNER STONE ELBA 28j
She sells as Lot 17



BECK-CSG OPTIMIZER 8005
Full brother to Lot 17

17 Corner Stone Elba 28j

DOB: 3/10/2017 Cow 18908122 Tattoo: 28J

KLR MAXIMIZER 1487 17047841	WCC KLR Grand Torino 95	TC Gridiron 258	\$ M				
	KLR Basin Lucy 178E II	Sandpoint WAR Evergreen 3023		54			
SAV ELBA 1811 16984060	SAV Bismarck 5682	Basin Max 602C	\$ W				
	SAV Elba 1094	Basin Lucy 855A	80				
		GAR Grid Maker	\$ B				
		SAV Abigale 0451	114				
		SAF 598 Bando 5175	\$ C				
		SAV Elba 7099	202				
CED	BW	WW	YW	MILK	CWT	MARB	REA
9	0.6	74	124	29	I+46	I-.01	I+.55

• One of the best females ever produced out of our embryo program is this female with limitless potential and a flush sister to “Optimizer.” This designed mating between KLR Maximizer 1487, the number #1 bull in the entire breed for combined WW and YW at his accuracy level and who won the Oklahoma Conner College State Bull Test with a gain of 6.61 and ultrasounding an actual 20 in ribeye combined with our past Lot 1 \$27,000 valued donor 1811 from our 2015 sale and a direct daughter of SAV Elba 1094, the 4th high-income producer in the historic SAV program who produced the past 2017 Treasure Bull Test Champion Jackpot Bull with a 1345 lb YW and an ADG of 3.71 earning an index of 111. 1811 has been praised to be one of the most completed daughters of Bismarck combining a phenomenal calving ease, growth and maternal ability; her flush sisters have sold in this past sales season: SAV Elba 1810 for \$20,000 in the ZWT sale to Pasture View Angus, IL/ Farmington Angus, TN and S A V Elba 910 for \$30,000 in the Siebring Angus sale to Pasture View Angus, IL/ Farmington Angus, TN.

• Safe to the \$460,000 SAV RAINFALL 6846. Due 2/3/2021.



SAV ELBA 1811
Dam of Lot 17



SAV ELBA 910
Full sister to the dam of Lot 17



SAV ROSETTA 4187
She sells as Lot 18

18 SAV Rosetta 4187

DOB: 2/25/2014 Cow 17824088 Tattoo: 4187

SAV RESOURCE 1441
#*17016597

Rito 707 of Ideal 3407 7075
SAV Blackcap May 4136

RR Rito 707
Ideal 3407 of 1418 076
SAV 8180 Traveler 004
SAV May 2397

SAV ROSETTA 8140
16056307

SAV Mandan 5664
SAV Rosetta 1053

SAV 8180 Traveler 004
SAV Abigale 0451
SAF 598 Bando 5175
SAV Dakota Rosetta 2474

\$ M
50
\$ W
42
\$ B
112
\$ C
195

CED	BW	WW	YW	MILK	CWT	MARB	REA
0	3.7	58	111	21	40	0.1	0.65

- A smashing phenotype Resource daughter that continues to impress with her fleshing ability and the ability to bring in a heavy weight, high valued calf. Her past progeny have averaged \$4,650 through past sales, and she is guaranteed to have a high end heifer calf next year. Her granddam, Rosetta 1053, is a high-valued donor for the Schaff Angus Valley program and has \$245,000 in past progeny sales with 12 daughters retained in the SAV herd.
- **Safe with Sexed Heifer to CSG REMARKABLE 5506. Due 4/25/2021.**



SAV ROSETTA 7428
Same family as Lot 18



SAV ROSETTA 1053
Granddam of Lot 18



SAV MISS VIXON 3744
She sells as Lot 19

19 SAV Miss Vixon 3744

DOB: 2/19/2013 Cow 17610556 Tattoo: 3744

AAR TEN X 7008 SA
#*15719841

Mytty In Focus
AAR Lady Kelton 5551

SAF Focus of ER
Mytty Countess 906
SAV Adaptor 2213
HSAF Lady Kelton 504B

SAV MISS VIXON 9706
16489203

SAV Bismarck 5682
SAV Miss Vixon 6712

GAR Grid Maker
SAV Abigale 0451
SAV 8180 Traveler 004
SAV Miss Vixon 0464

\$ M
61
\$ W
55
\$ B
124
\$ C
222

CED	BW	WW	YW	MILK	CWT	MARB	REA
12	-0.6	51	92	23	25	0.44	0.42

- One of the most impressive Ten X daughters you will find anywhere across the country. Her length and depth of body transmits to their progeny. Her progeny have averaged \$4,250 through past sales and her upcoming calf is by the up-and-coming sire, CSG Remarkable 5506.

• Safe with Sexed Heifer to CSG REMARKABLE 5506. Due 4/23/2021.





KLR LADY 1403
She sells as Lot 20



SINCLAIR LADY 1C8 4465
\$20,000 Dam of Lot 20

20 KLR Lady 1403

DOB: 8/15/2011 Cow 17047924 Tattoo: 1403

SAV IRON MOUNTAIN 8066 #*16115617	TC Gridiron 258	GAR Grid Maker	\$ M				
	SAV Madame Pride 3249	TC Blackbird 7049		35			
SINCLAIR LADY 1C8 4465 +*14037178	Papa Rito T Intense DHD 6844	Papa Rito Traveler 4807	\$ W				
		Blackcap Mc Henry DHD 4810	37				
	Ideal 4465 of 6807 4286	DHD Traveler 6807	\$ B				
		EE 4286 of Ideal 2240 1254	117				
		\$ C	187				
CED	BW	WW	YW	MILK	CWT	MARB	REA
1	3	50	89	19	31	0.36	0.36

- A standout Lady that will be hard to let go of. She combines all the qualities for a future donor. Her four progeny ratio'd 95 on BW and 105 on YW, averaging \$4,900 from past progeny sales. Her \$20,000 dam, 1C8 4465, has been a donor renowned for her fleshing ability combined into a great phenotype package.

• Safe with Sexed Heifer to CSG REMARKABLE 5506. Due 4/23/2021.



SINCLAIR LADY 2P61 4465
\$110,000 maternal sister to Dam of Lot 20



IDEAL 4465 OF 6807 4286
\$110,000 Granddam of Lot 20



CORNER STONE BLACKCAP MAY 9036
She sells as Lot 21



SAV BLACKCAP MAY 1803
Dam of Lot 21

21 CornerStone BlackcapMay 9036

DOB: 1/13/2019 Cow 19686119 Tattoo: 9036

KLR MAXIMIZER 1487 17047841	WCC KLR Grand Torino 95	TC Gridiron 258	\$ M 48				
	KLR Basin Lucy 178E II	Sandpoint WAR Evergreen 3023		\$ W 73			
SAV BLACKCAP MAY 1803 +*16984077	SAV Iron Mountain 8066	SAV Madame Pride 3249	\$ B 123				
	SAV May 2397	SAF 598 Bando 5175	\$ C 208				
		SAV May 7238					
CED	BW	WW	YW	MILK	CWT	MARB	REA
I+7	I+1.5	I+77	I+131	I+21	51	0.07	0.64

• A female which presents one of the most exciting outcross opportunities grounded into a maternal line known around the world. She is a true gem that exemplifies the best characteristics of her sire with pounds and performance and her dam's outstanding phenotype combined with depth of rib and thickness rarely seen in one individual. Her phenomenal donor, SAV Blackcap May 1803, has five daughters in the SAV Herd and is a flush sister to the \$200,000 SAV Angus Valley and a daughter of the \$75,000 Pathfinder sire and Accelerated Genetics AI sire, SAV Iron Mountain 8066. Granddam of this female, SAV May 2397, is an 18-year-old Pathfinder dam who is the third top income-producing cows in SAV history and has tallied \$1.7 million in receipts on 97 head averaging \$17,539 in past SAV sales; she has six sons working in AI studs including the \$200,000 SAV Angus Valley and the \$92,500 SAV Brave. Dam of this female is also a maternal sister to SAV Blackcap May 4136 who has shattered all records as the #1 income-producing cow in SAV history generating an astounding \$9.6 million in progeny sales to date with 149 direct sons and daughters averaging \$49,800 in past SAV sales to cattlemen in 25 states, Canada and Brazil.

• Safe to SAV EXCLAIM 9057. Due 1/27/2021.



SAV ANGUS VALLEY
\$200,000 full brother to dam of Lot 21



SAV MAY 2397
Grrranddam to Lot 21



CORNER STONE BLACKCAP MAY 9024
She sells as Lot 22



SAV BLACKCAP MAY 1803
Dam of Lot 22

22 Corner Stone Blackcap May 9024

DOB: 1/08/2019 Cow 19686123 Tattoo: 9024

SAV RAINFALL 6846 +*18578963	Coleman Charlo 0256	OCC Paxton 730P	\$ M
	SAV Blackcap May 4136	Bohi Abigale 6014	
SAV BLACKCAP MAY 1803 +*16984077	SAV Iron Mountain 8066	SAV 8180 Traveler 004	\$ W
	SAV May 2397	SAV May 2397	62
		TC Gridiron 258	\$ B
		SAV Madame Pride 3249	108
		SAF 598 Bando 5175	\$ C
		SAV May 7238	207

CED	BW	WW	YW	MILK	CWT	MARB	REA
I+11	I+.6	I+57	I+104	I+25	37	0.32	0.52

• A spectacular daughter out of the \$460,000 SAV Rainfall 6846, who exemplifies the best characteristics of his sire with pounds and performance and his dam's outstanding phenotype combined with depth of rib and thickness rarely seen in one individual. Her phenomenal donor, SAV Blackcap May 1803, is a flush sister to the \$200,000 SAV Angus Valley and is a daughter of the \$75,000 Pathfinder sire and Accelerated Genetics AI sire, SAV Iron Mountain 8066. Granddam of this female, SAV May 2397, is an 18-year old Pathfinder dam who is the third top-income producing cow in SAV history and has tallied \$1.7 million in receipts on 97 head averaging \$17,539 in past SAV sales; she has six sons working in AI studs including the \$200,000 SAV Angus Valley and the \$92,500 SAV Brave. Dam of this female is a maternal sister to SAV Blackcap May 4136 who has shattered all records as the #1 income-producing cow in SAV history generating an astounding \$9.6 million in progeny sales to date with 149 direct sons and daughters averaging \$49,800 in past SAV sales to cattlemen in 25 states, Canada and Brazil.

• Safe to SAV EXCLAIM 9057. Due 4/1/2021.



SAV BLACKCAP MAY 4136
Maternal sister to Dam of Lot 22



SAV BRAVE 8320
\$92,500 maternal brother to dam of Lot 22



SAV BLACKCAP MAY 8059
She sells as Lot 23



SAV BLACKCAP MAY 1433
Granddam of Lot 23

23 SAV Blackcap May 8059

DOB: 2/17/2018 Cow 19136784 Tattoo: 8059

SAV SENSATION 5615
+*18258149

SAV Registry 2831
SAV Blackcap May 4136

Rito 707 of Ideal 3407 7075
SAV Madame Pride 0075
SAV 8180 Traveler 004
SAV May 2397

\$ M
47
\$ W
44
\$ B
116
\$ C
198

SAV BLACKCAP MAY 6175
18443220

SAV Cutting Edge 4857
SAV Blackcap May 1433

SAV Harvester 0338
SAV Blackcap May 5530
Rito 707 of Ideal 3407 7075
SAV Blackcap May 4136

CED	BW	WW	YW	MILK	CWT	MARB	REA
0	3.5	62	110	18	I+49	I+.11	I+.50

- A fabulous daughter of the \$650,000 Sensation by our proven donor 6175. This female will lead any program she goes into to a next level for performance and maternal ability. Her dam is a beautiful donor with her beautiful udder and quiet disposition. Her sire is a maternal brother to the \$180,000 SAV Regard 4863, and full brothers, SAV Stunner 7006 and SAV Stud 7112, were features of the SAV Sale selling to Ingram Angus. She stems from the family family as the iconic Pathfinder dam with \$1.9 million in direct progeny sales and 87 progeny averaging \$21,324, SAV Blackcap May 5530. She has been a fabulous embryo producer and will be a staple in our breeding program moving forward.

• Safe to CORNER STONE MAXED OUT 9023. Due 2/17/2021.



SAV BLACKCAP MAY 1416
Full sister to the grandam of Lot 23



SAV BLACKCAP MAY 1443
Full sister to the grandam of Lot 23



CORNER STONE ELBA 8207
She sells as Lot 24



SAV ELBA 4236
Dam of Lot 24

24 Corner Stone Elba 8207

DOB: 12/16/2018 Cow 19686125 Tattoo: 8207

SAV RAINFALL 6846 +*18578963	Coleman Charlo 0256	OCC Paxton 730P Bohi Abigale 6014 SAV 8180 Traveler 004 SAV May 2397	\$ M				
	SAV Blackcap May 4136		67				
SAV ELBA 4236 14739177	Boyd New Day 8005	AAR New Trend SVF Forever Lady 57D SAF 598 Bando 5175 SAV Elba 7099	\$ W				
	SAV Elba 1094		66				
			\$ B				
			113				
			\$ C				
			214				
CED	BW	WW	YW	MILK	CWT	MARB	REA
I+9	I+1.9	I+57	I+104	I+31	38	0.29	0.42

• This female offers tremendous length of body and style in a calving-ease herd producer emanating from the negative calving-ease sire and \$460,000 SAV Rainfall 6848. Her dam is one of the most sought after donors of our program for maternal power, SAV Elba 4236, and a direct daughter of the Pathfinder sire, Boyd New Day 8005; she has \$185,000 in direct progeny sales and is a direct daughter of the \$1,000,000 progeny sales donor, SAV Elba 1094, who has 31 daughters retained in the SAV herd and ranks among one of the top five income-producing cows in SAV history. Granddam of this female has tallied \$1.1 million in receipts on 117 progeny in past SAV Sales including the \$200,000 SAV Peacemaker 3179, the \$30,000 SAV Regal 2883 selected by Denny Topf, the \$23,000 SAV Regency 2884 selected by Buford Ranches, the \$40,000 SAV Elba 8986, the \$36,000 SAV Elba 1810, the \$27,500 valued SAV Elba 1811, the \$100,000 SAV Elba 4436 and many others.

• Safe to SAV EXCLAIM 9057. Due 1/23/2021.



SAV ELBA 1797
\$36,000 maternal sister to dam of Lot 24



SAV ELBA 8986
\$40,000 maternal sister to dam of Lot 24



CSG-BECK ELBA
She sells as Lot 25

25 CSG-Beck Elba

DOB: 2/4/2019 Cow 19687714 Tattoo: 9089

SAV ANGUS VALLEY 1867
#+*17016630

SAV Iron Mountain 8066
SAV May 2397

TC Gridiron 258
SAV Madame Pride 3249
SAF 598 Bando 5175
SAV May 7238

CORNER STONE ELBA 289
17339741

SAV 707 Rito 9969
SAV Elba 1094

Rito 707 of Ideal 3407 7075
BR Polly 8077-472
SAF 598 Bando 5175
SAV Elba 7099

\$ M
43
\$ W
56
\$ B
148
\$ C
235

CED	BW	WW	YW	MILK	CWT	MARB	REA
I+2	I+2.4	I+58	I+109	I+28	58	0.37	0.48

- This female is a future herd matron that will be a staple of anyone's program. Her sensational Elba donor is by the \$147,500 SAV Rito 7075 of 9969 and the \$1 million producer, SAV Elba 1094. She is a true breeding master piece. Her dam has amassed over \$50,000 in progeny sales and is full flush sister to the 2018 Lead of Cow for the SAV sale, SAV Elba 2536, for \$65,000 going to GMC Genetics LLC, Fraziers Bottom, WV and Wells Cattle Company LLC, Hillsboro, KY. Her granddam has tallied \$1.1 million in receipts on 117 progeny in past SAV Sales including the \$200,000 SAV Peacemaker 3179, the \$30,000 SAV Regal 2883 selected by Denny Topf, the \$23,000 SAV Regency 2884 selected by Buford Ranches, the \$40,000 SAV Elba 8986, the \$36,000 SAV Elba 1810, the \$27,500 valued SAV Elba 1811, the \$100,000 SAV Elba 4436 and many others.

• Safe to SAV EXCLAIM 9057. Due 2/10/2021.



SAV REGAL 2883
\$30,000 maternal brother to the dam of Lot 25



SAV ELBA 2538
Full sister to the dam of Lot 25



CORNER STONE ELBA 72L
She sells as Lot 26

26 Corner Stone Elba 72L

DOB: 2/20/2019 Cow 19547264 Tattoo: 72L

CSG REMARKABLE 5506
+*18508178

SAV Renown 3439
SAV Greystone Jannet 5345

Rito 707 of Ideal 3407 7075
SAV Blackcap May 4136
SAV 8180 Traveler 004
SAV Jannet 7059

\$ M
49
\$ W
78
\$ B

CORNER STONE ELBA 23J
18915113

SAV Pedigree 4834
SAV Elba 9831

SAV Pioneer 7301
SAV Blackcap May 4136
FV 20K King 308M
SAV Elba 1094

\$ C

CED	BW	WW	YW	MILK	CWT	MARB	REA
8	0.8	71	120	32			

- A fantastic bred heifer prospect that lives up to her sire's name, "Remarkable," and maternal cow builder for a herd. Her dam is one of the top 1st calf heifers out of the \$750,000 SAV Pedigree 4834. Third-generation dam of this female is the famous SAV Elba 1094, who has 31 daughters retained in the SAV herd and ranks among one of the top five income-producing cows in SAV history tallying \$1.1 million in receipts on 117 progeny in past SAV Sales including the \$200,000 SAV Peacemaker 3179

• Safe to SAV EXCLAIM 9057. Due 2/3/2021.

27 Corner Stone Elba 56L

DOB: 2/18/2019 Cow 19547265 Tattoo: 56L

CSG REMARKABLE 5506
+*18508178

SAV Renown 3439
SAV Greystone Jannet 5345

Rito 707 of Ideal 3407 7075
SAV Blackcap May 4136
SAV 8180 Traveler 004
SAV Jannet 7059

\$ M
68
\$ W
78
\$ B

CORNER STONE ELBA 20J
18941518

SAV Platinum 5013
Corner Stone Elba 5010

SAV Platinum 0010
SAV Elba 3593
SAV International 2020
SAV Elba 8969

\$ C

CED	BW	WW	YW	MILK	CWT	MARB	REA
9	0.2	71	119	30			

- Another beautiful bred female who offers tremendous eye appeal and depth of body, which is a trademark of the Elba cow line. Her granddam is a proven donor for the SAV Program with over \$100,000 in progeny sales through past SAV Sales. Her fourth-generation dam, SAV Elba 1094, has 31 daughters retained in the SAV herd and ranks among one of the top five income-producing cows in SAV history tallying \$1.1 million in receipts on 117 progeny in past SAV sales including the \$200,000 SAV Peacemaker 3179.

• Safe to SAV EXCLAIM 9057. Due 2/3/2021.

28 Corner Stone Elba 30L

DOB: 2/3/2019 Cow 19552838 Tattoo: 30L

KLR MAXIMIZER 1487
17047841

WCC KLR Grand Torino 95
KLR Basin Lucy 178E II

TC Gridiron 258
Sandpoint WAR Evergreen 3023
Basin Max 602C
Basin Lucy 855A

\$ M
64
\$ W
80
\$ B

CORNER STONE ELBA 88F
17792896

Werner War Party 2417
KLR Elba 1311

Connealy Onward
BAAR USA Lady Jaye 489
SAV Final Answer 0035
SAV Elba 6381

\$ C

CED	BW	WW	YW	MILK	CWT	MARB	REA
10	0.1	77	132	28			

- An impressive, deep, phenotype bred heifer that goes back to our past donor dam and breed-leading performance and maternal dam, 4236. SAV Elba 4236 is a direct daughter of the Pathfinder sire, Boyd New Day 8005 and she has \$185,000 in direct progeny sales. The dam of 4236 is the famous SAV Elba 1094, who has 31 daughters retained in the SAV herd and ranks among one of the top five income-producing cows in SAV history tallying \$1.1 million in receipts on 117 progeny in past SAV Sales including the \$200,000 SAV Peacemaker 3179, the \$30,000 SAV Regal 2883 selected by Denny Topf, the \$23,000 SAV Regency 2884 selected by Buford Ranches, the \$40,000 SAV Elba 8986, the \$36,000 SAV Elba 1810, the \$27,500 valued SAV Elba 1811, the \$100,000 SAV Elba 4436 and many others

• Safe to SAV EXCLAIM 9057. Due 2/3/2021.



CORNER STONE ELBA 56L
She sells as Lot 27



CORNER STONE ELBA 30L
She sells as Lot 28

- One of the most impressive phenotype bred heifers out of the Madame Pride family of her calf crop. Her dam will be a long-term feature for our herd in the future. Her granddam, 2093 has phenotype and maternal power of the Rito 7075 and SAV Madame Pride lines combined into this one-of-a-kind donor female. A beautiful udder and heavy milking female who has two progeny tallying \$25,000 through past SAV Sales. She has four consecutive generations of SAV donors in her maternal line and is a female that is a can't miss producer.

- **Safe to SAV EXCLAIM 9057. Due 2/3/2021.**



CORNER STONE MADAME PRIDE 8L
She sells as Lot 29

29 Corner Stone Madame Pride 8L

DOB: 1/25/2019 Cow 19547262 Tattoo: 8L

COLEMAN CHARLO 0256 #**16879074	OCC Paxton 730P	OCC Focus 813F	\$ M 68				
	Bohi Abigale 6014	OCC Blackbird 736K		\$ W 74			
		Sitz Traveler 8180		\$ B			
CORNERSTONE MADAME PRIDE 50J 18908109	SAV Pedigree 4834	SAV Pioneer 7301	\$ C				
	SAV Madame Pride 2093	SAV Blackcap May 4136					
		Rito 707 of Ideal 3407 7075					
	SAV Madame Pride 8552						
CED	BW	WW	YW	MILK	CWT	MARB	REA
4	2.2	76	126	26			

29A Corner Stone Madame Pride 1923

DOB: 2/17/2019 Cow 19495042 Tattoo: 1923

SAV QUARTERBACK 7933 +*18913003	SAV Regard 4863	SAV Resource 1441	\$ M 61				
	SAV Blackcap May 3525	SAV Blackcap May 5530		\$ W 72			
		SAV Final Answer 0035		\$ B			
SAV MADAME PRIDE 2335 *17249247	SAV Brand Name 9155	SAV Bismarck 5682	\$ C 222				
	SAV Madame Pride 0075	SAV Blackcap May 5530		\$ B 124			
		SAF 598 Bando 5175		\$ C 222			
	SAV Madame Pride 8264						
CED	BW	WW	YW	MILK	CWT	MARB	REA
3	2.8	75	118	21	55	.04	.81

- A beautiful bred heifer that offers breed-leading power and performance. Her dam was a featured donor to sell through a past sale and is a direct daughter of SAV Madame Pride 0075, who has more than \$3.6 million in direct progeny sales with 148 progeny averaging \$24,485 and four daughter retained. She has three past progeny tallying \$37,750. Dam is a maternal sister to the \$1.51 million dollar SAV America 8018, the \$235,000 Super Charger, and the \$90,000 Accelerated Genetics AI sire, SAV Registry 2831.

- **AI Bred to the \$460,000 SAV Rainfall 6846, due 02-22-2021. Confirmed Safe**



CORNER STONE MADAME PRIDE 1923
She sells as Lot 29A



CORNER STONE EMBLYNETTE 58L
She sells as Lot 30

- A bred female who truly offers an array of possibilities as her phenotype and style along with her growth and power marks her as female who will make great herd sires. Her fantastic dam who records \$38,000 in total progeny sales is a direct daughter of SAV Emblynette 3301, who has amassed over \$1 million in progeny sales, and 5823's famous brother, SAV Drover, is leased to Select Sires AI stud and flush sister to him, the \$150,000 SAV Emblynette 5828.

• Safe to SAV EXCLAIM 9057. Due 2/3/2021.



SAV EMBLYNETTE 3301
Grandam of Lot 30

30 Corner Stone Emblynette 58L
DOB: 2/20/2019 Cow 19547269 Tattoo: 58L

KLR MAXIMIZER 1487 17047841	WCC KLR Grand Torino 95	TC Gridiron 258	\$ M
	KLR Basin Lucy 178E II	Sandpoint WAR Evergreen 3023	50
SAV EMBLYNETTE 5823 18204626	SAV Registry 2831	Basin Max 602C	\$ W
	SAV Emblynette 3301	Basin Lucy 855A	81
		Rito 707 of Ideal 3407 7075	\$ B
		SAV Madame Pride 0075	
		SAF 598 Bando 5175	\$ C
		SAV Emblynette 7319	
CED	BW	WW	YW
9	0.5	83	135
		MILK	CWT
		23	
		MARB	REA



CORNER STONE EMBLYNETTE 88L
She sells as Lot 31

- An opportunity to acquire one of the top phenotype and bred heifer prospects of the crop. She possess femininity and power along with an impressive EPD profile. Her Pathfinder dam, SAV Emblynette 1217, is one of the most impressive females to walk the pastures here and she continues to impress us with her continued ability to infuse her progeny with all the characteristics that make the Angus breed great; she has four progeny selling through past SAV sales totaling \$83,250.

• Safe to CORNER STONE MAKE IT RAIN 4L. Due 4/7/2021.



SAV EMBLYNETTE 1217
Dam of Lot 31

31 Corner Stone Emblynette 88L
DOB: 2/24/2019 Cow 19547268 Tattoo: 88L

KLR MAXIMIZER 1487 17047841	WCC KLR Grand Torino 95	TC Gridiron 258	\$ M
	KLR Basin Lucy 178E II	Sandpoint WAR Evergreen 3023	46
SAV EMBLYNETTE 1217 #16928550	SAV Iron Mountain 8066	Basin Max 602C	\$ W
	SAV Emblynette 3325	Basin Lucy 855A	91
		TC Gridiron 258	\$ B
		SAV Madame Pride 3249	135
		SAF 598 Bando 5175	\$ C
		SAV Emblynette 7319	221
CED	BW	WW	YW
6	1.6	92	149
		MILK	CWT
		25	I+.57
		MARB	REA
		I+.10	I+.55

32 Corner Stone Rosetta 74L

DOB: 2/25/2019 Cow 19558210 Tattoo: 74L

KLR MAXIMIZER 1487 17047841	WCC KLR Grand Torino 95	TC Gridiron 258	\$ M
	KLR Basin Lucy 178E II	Sandpoint WAR Evergreen 3023	51
SAV ROSETTA 4187 17824088	SAV Resource 1441	Basin Max 602C	\$ W
		Basin Lucy 855A	69
	SAV Rosetta 8140	Rito 707 of Ideal 3407 7075	\$ B
		SAV Blackcap May 4136	121
		SAV Mandan 5664	\$ C
		SAV Rosetta 1053	208

CED	BW	WW	YW	MILK	CWT	MARB	REA
6	1.5	78	136	21	I+51	I-.02	I+.76

•A moderate, deep-framed, bred heifer that is out of one of our favorite Rosetta's selling in this sale and a smashing phenotype Resource daughter that continues to impress with her fleshing ability and the ability to bring in a heavy-weight, high-valued calf, SAV Rosetta 4187; her progeny have averaged \$4,650 through past sales, and this featured female out of her is guaranteed to have a high end heifer calf next year. The third-generation dam of this female, SAV Rosetta 1053, is a high-valued donor for the Schaff Angus Valley program and has \$245,000 in past progeny sales with 12 daughters retained in the SAV herd.

•Safe to SAV EXCLAIM 9057. Due 2/3/2021.



CORNER STONE ROSETTA 74L
She sells as Lot 32

33 Corner Stone MS Blackcap 18L

DOB: 1/22/2019 Cow 19558207 Tattoo: 18L

SAV PEDIGREE 4834 +*17921485	SAV Pioneer 7301	SAV Final Answer 0035	\$ M
	SAV Blackcap May 4136	SAV Blackbird 5297	71
CORNER STONE MS BLACKCAP 6I 18592492	SAV Cornerstone 3637	SAV 8180 Traveler 004	\$ W
		SAV May 2397	76
	Corner Stone Ms Blackcap 25G	SAV Angus Valley 1867	\$ B
		SAV Emblynette 3301	\$ C
		KLR Maximizer 1487	
		Myers Miss Blackcap M355	

CED	BW	WW	YW	MILK	CWT	MARB	REA
7	1.2	75	124	26			

•NEED FOOTNOTES

• Safe to CORNER STONE MAKE IT RAIN 4L. Due 5/14/2021.



CORNER STONE MS BLACKCAP 18L
She sells as Lot 33

34 Corner Stone Queen Eva 40L

DOB: 1/20/2019 Cow 19558208 Tattoo: 40L

KLR MAXIMIZER 1487 17047841	WCC KLR Grand Torino 95	TC Gridiron 258	\$ M
	KLR Basin Lucy 178E II	Sandpoint WAR Evergreen 3023	57
CSG QUEEN EVA 1T 17440505	NAR On Track 743	Basin Max 602C	\$ W
		Basin Lucy 855A	76
	BR Queen Eva 518-191	Connealy Onward	\$ B
		Boyd Forever Lady 7095	137
		Twin Valley Precision E161	\$ C
		BR Queen Eva 518	235

CED	BW	WW	YW	MILK	CWT	MARB	REA
7	2.3	80	136	26	I+57	I+.11	I+.73

•The top WW and YW heifer of her calf crop from the Queen Eva family who has had many bull test winners and high sellers. This female will take any herd to the next level and her dam has progeny averaging \$4,650 through past sales and is the top matriarch of her lineage.

• Safe to CORNER STONE MAKE IT RAIN 4L. Due 4/7/2021.



CORNER STONE QUEEN EVA 40L
She sells as Lot 34

S A V EXCLAIM 9057

DOB

2/16/19

BW

-1.2

WW

+59

YW

+88

DOC

+23



Sinclair Emulation XXP

S A V Elation 7899

S A V Blackcap May 1782

S A V 004 Density 4336

S A V Emblynette 3293

S A V Emblynette 7411

S A V EXCLAIM 9057

AAA: +19542383 DOB: 2/16/2019

BULK DISCOUNT

\$15.00 ea

UNITS

BUY SEMEN: \$20.00 ea

CERTS

BUY CERTIFICATES: \$25.00 ea



Sire: S A V Elation 7899



Dam: S A V Emblynette 3293

- #1 Calving Ease Bull From The Schaff Angus Valley 2020 Sale
- Recommended On Heifers
- Top 10% on BW (-1.2)
- +23 on Docility
- Top 40% On WW (+59)
- +20 on Milk Power
- His Phenomenal 5th Generation Donor Dam Is The DAM of 'SAV Territory 7225'
- 70 lb Birth Weight
- 836 lb Weaning Weight
- 1302 lb Yearling Weight

Production											
CEM	BW	WW	YW	RADG	DMI	YH	SC	DOC	CLAW	ANGLE	HP
+4	-1.2	+59	+88	+21	+1.08	+6	+44	+23	+54	+49	+10.9
.05	.38	.34	.31	.05	.05	.05	.37	.36	.05	.05	.05
70%	10%	40%	75%	75%	65%	40%	75%	25%	65%	45%	55%
CEM	MILK	Maternal		MW	MH	CW	\$EN	MARB	RE	FAT	
+8	+20	+77	+77	+6	+6	+49	-8	+48	+61	+016	
.05	.14	.05	.05	.05	.05	.24	.20	.23	.23	.18	
55%	85%	25%	30%	30%	30%	30%	40%	55%	45%	60%	
\$M	\$F	\$B	\$Values				\$W	\$G	\$C		
+64	+77	+117				+61	+40	+216			
40%	60%	70%				35%	65%	60%			

As of 11/1/2020

CORNER STONE MAXED OUT 9023

DOB

1/8/19

BW

+1.5

WW

+77

YW

+131

DOC

+11



WCC KLR Grand Torino 95

KLR Maximizer 1487

KLR Basin Lucy 178E II

S A V Iron Mountain 8066

S A V Blackcap May 1803

S A V May 2397

CORNER STONE MAXED OUT 9023

AAA: +19686114 DOB: 1/8/2019

BULK DISCOUNT

\$15.00 ea

UNITS

BUY SEMEN: \$20.00 ea

CERTS

BUY CERTIFICATES: \$20.00 ea

SIRE BUYER



Sire: KLR Maximizer 1487



Dam: S A V Blackcap May 1803

- A Standout From Birth, Showing The Greatest Spread of BW (+78 lbs) To WW (889 lbs) and YW (1400 lbs)
- Top IMF Ratio of 125
- Lead Son of 'Maximizer' Destined To Carry On His Sires Legacy
- His Phenomenal Donor Dam Is A Flush Sister To The \$200,000 'SAV Angus Valley'
- Top 15% on RADG
- =21 on Milk Power

Production											
CED	BW	WW	YW	RADG	DMI	YH	SC	DOC	CLAW	ANGLE	HP
+7	+1.5	+77	+131	+28	+1.14	+1.1	+96	+11	+52	+49	+10.9
.05	.05	.05	.05	.05	.05	.05	.05	.05	.05	.05	.05
45%	55%	4%	10%	15%	70%	4%	40%	75%	55%	45%	55%
CEM	MILK	Maternal		MW	MH	CW	\$EN	MARB	RE	FAT	
+10	+21			+98	+9	+59	-34	+20	+61	+016	
.05	.05			.05	.05	.22	.19	.23	.18	.18	
35%	80%			10%	10%	10%	95%	90%	45%	60%	
\$M	\$F	\$B	\$Values				\$W	\$G	\$C		
+49	+99	+130				+73	+31	+218			
80%	15%	50%				15%	85%	60%			

As of 11/1/2020

CSG REMARKABLE 5506

DOB
11/11/15
BW
+7
WW
+64
YW
+111
DOC
+14



Production					
CED	BW	WW	YW	YH	DOC
+8	+.7	+64	+111	+7	+14
.40	.63	.54	.41	.47	.38
35%	40%	25%	30%	25%	60%
Maternal					
HP	CEM	MILK	MW	MH	\$EN
+9.2	+10	+30	+61	+7	-21
.26	.35	.36	.39	.41	
70%	35%	20%	40%	15%	75%
Carcass					
CW	MARB	RE	FAT	RADG	GRP
+32	-.07	+.52	+.024	+.21	+13
.41	.38	.38	.34	.34	.22
70%	95%	50%	70%	70%	10%
\$ Values					
\$M	\$W	\$F	\$G	\$B	\$C
+55	+74	+70	+17	+86	+167
50%	15%	75%	95%	95%	90%

Rito 707 of Ideal 3407 7075 S A V 8180 Traveler 004
 S A V Renown 3439 S A V Greystone Jannet 5345
 S A V Blackcap May 4136 S A V Jannet 5095

CSG REMARKABLE 5506

AAA: *18508178 DOB: 11/11/2015

UNITS	Buy Semen: \$20.00
CERTS	Buy Certificate: \$25.00

- Elite Heifer Bull Prospect
- Top Level SAV Renown 3439 son
- + 14 Docility
- Top 25% on CED (+12)
- Top 40% on BW (+.7)
- Top 25% on CEM (+10)
- Top 20% on Milk (+30)
- Will Sire Deep Bodied Calves With High Growth Potential
- Expect Phenotype, Heavy Milkers, Calving Ease With Exceptional Weaning & Yearling Weights!

CORNER STONE MAKE IT RAIN 4L

DOB
1/15/19
BW
-.9
WW
+73
YW
+125
DOC
+21



Production					
CED	BW	WW	YW	YH	DOC
+14	-.9	+73	+125	+2	+21
.25	.35	.31	.23	.05	.05
4%	15%	10%	15%	85%	30%
Maternal					
HP	CEM	MILK	MW	MH	\$EN
+7.8	+11	+31	+45	+0	-28
.05	.16	.17	.05	.05	
90%	25%	15%	65%	80%	90%
Carcass					
CW	MARB	RE	FAT	RADG	GRP
+56	+.29	+.52	+.021	+.24	N/A
.25	.22	.25	.22	.05	N/A
15%	80%	55%	65%	50%	N/A
\$ Values					
\$M	\$W	\$F	\$G	\$B	\$B
+60	+85	+87	+34	+120	+216
60%	3%	30%	80%	65%	60%

Coleman Charlo 0256 F V 20K King 308M
 S A V Rainfall 6846 S A V Elba 9831
 S A V Blackcap May 4136 S A V Elba 1094

CORNER STONE MAKE IT RAIN 4L

AAA: *19658966 DOB: 1/15/2019

UNITS	Buy Semen: \$20.00
CERTS	Buy Certificate: \$25.00

- Calving Ease + POWER
- Elite Heifer Bull Prospect
- Top 10% on WW (+73)
- Top 15% on YW (+125)
- Top 4% on Calving Ease (+14)
- Top 15% on Milk (+31)
- Top 3% on \$W
- A Top Level Heifer Bull Prospect With Exceptional Weaning & Yearling Weights
- Top 40% & Higher on Feet
- Top 55% on PAP (+1.09)
- +21 on Docility

BECK-CSG OPTIMIZER 8005



- DOB
1/11/18
- BW
+1.3
- WW
+86
- YW
+144
- DOC
+12

Production					
CED	BW	WW	YW	YH	DOC
+9	+1.3	+86	+144	+1.1	+12
.05	.37	.33	.29	.05	.05
30%	50%	1%	2%	4%	75%
Maternal					
HP	CEM	MILK	MW	MH	\$EN
+9.4	+11	+29	+78	+7	-41
.05	.05	.15	.05	.05	
75%	25%	20%	25%	15%	95%
Carcass					
CW	MARB	RE	FAT	RADG	GRP
+54	+11	+.60	+.035	+.26	+13
.24	.20	.24	.20	.05	.22
20%	95%	45%	85%	30%	10%
\$ Values					
\$M	\$W	\$F	\$G	\$B	\$C
+52	+90	+98	+35	+123	+212
75%	1%	15%	95%	60%	65%

WCC KLR Grand Torino 95 S A V Bismarck 5682
 KLR Maximizer 1487 S A V Elba 1811
 KLR Basin Lucy 178E II S A V Elba 1094

BECK-CSG OPTIMIZER 8005

AAA: +19353230 DOB: 1/11/2018

UNITS Buy Semen: \$25.00

CERTS Buy Certificate: \$25.00

- The Most Intriguing Outcross Sire With Performance, Carcass & Maternal Ability
- Top 30% on RADG (+.26)
- Top 30% on CED (+12)
- Top 50% on BW (+1.3)
- Top 25% on CEM (+11)
- SAV Elba 1811, One Of The Most Complete Daughters of Bismarck Combining Phenomenal Calving Ease, Growth & Maternal Ability
- Top Selling Bull Of The 2018 Calf Crop

KLR MAXIMIZER 1487



- DOB
9/10/04
- BW
+2.0
- WW
+98
- YW
+165
- DOC
+9

Production					
CED	BW	WW	YW	YH	DOC
+6	+2.0	+98	+165	+1.7	+9
.44	.83	.78	.61	.59	.32
55%	70%	1%	1%	1%	80%
Maternal					
HP	CEM	MILK	MW	MH	\$EN
+9.6	+9	+20	+133	+1.1	-50
.20	.36	.43	.41	.42	
65%	45%	80%	1%	2%	95%
Carcass					
CW	MARB	RE	FAT	RADG	GRP
+62	-.13	+.86	-.013	+.31	N/A
.47	.42	.42	.41	.37	N/A
10%	95%	10%	20%	5%	N/A
\$ Values					
\$M	\$W	\$F	\$G	\$B	\$C
+47	+89	+113	+21	+134	+221
75%	2%	4%	95%	40%	50%

TC Gridiron 258 Basin Max 602C
 WCC KLR Grand Torino 95 KLR Basin Lucy 178E II
 Sandpoint WAR Evergreen Basin Lucy 855A

KLR MAXIMIZER 1487

AAA: +17047841 DOB: 9/10/2004

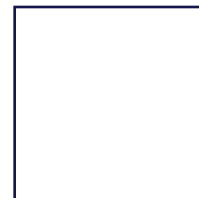
UNITS Buy Semen: \$25.00

CERTS Buy Certificate: \$25.00

- #1 Proven EPD Bull In The Entire Breed - Combining Birth, Weaning, Yearling & RADG
- Top 1% on (WW, YW & MW)
- Top 5% on RADG (+.31)
- Top 10% on Ribeye (+86)
- Top 50% on \$C (+221)
- Progeny Have Been Sale Toppers Across The Country, Including The Midland & Treasure Bull Test.
- Top Selling & Performing Bull At The Conner State university Bull Test in OK

CORNER STONE GENETICS

22232 State Rt 347
Raymond, OH 43067



DESIGNED BY FOCUS MARKETING GROUP

CORNER STONE GENETICS - 6th ANNUAL

Online **ANGUS**
Production Sale

Sale Hosted by
www.AngusLive.com
Sale Ends 11.27.20 - 7pm CST



CORNER STONE BLACKCAP MAY 9036
SHE SELLS!



S A V MADAME PRIDE 0075
ONE DAUGHTERS SELLS!



S A V ELBA 4236
ONE DAUGHTER SELL!

FRIDAY | NOVEMBER 27 | 2020