



BOUTIQUE COMMERCIAL
BOSTON OFFICE
PROJECT LOOKBOOK







INTRODUCTION

Lazare Builders was hired to bring to life the Developer’s vision for a charming and beautifully preserved yet fully updated boutique downtown office building. The project included many design-build aspects during which Lazare Builders worked directly with the client to maximize the leasable square footage and functionality of the spaces. Lazare Builders provided a level of quality and care in construction typically reserved for a custom home in an effort to make the office more than a place to work but a place to live and enjoy.

*Left: Pre-construction rendering
Right: As built*



BOSTON OFFICE

The project consisted of the full reconstruction of the entire building, including the lobby, elevator cabs, five office floors and two retail floors. The building features an entirely new HVAC system with capability for individualized controls and upgraded MERV filtration, a new glass addition exclusively for retail tenants, beautifully restored joists and exposed beams, a fully restored building facade, building lighting and all new energy efficient windows. The lobby features a stunning white Statuario marble wall with LED back lighting, custom designed marble tiled flooring and hand wrought iron scroll railings. The offices feature floor-to-ceiling Italian glass partitions with drop down gasketing, engineered wood flooring, and European kitchens.

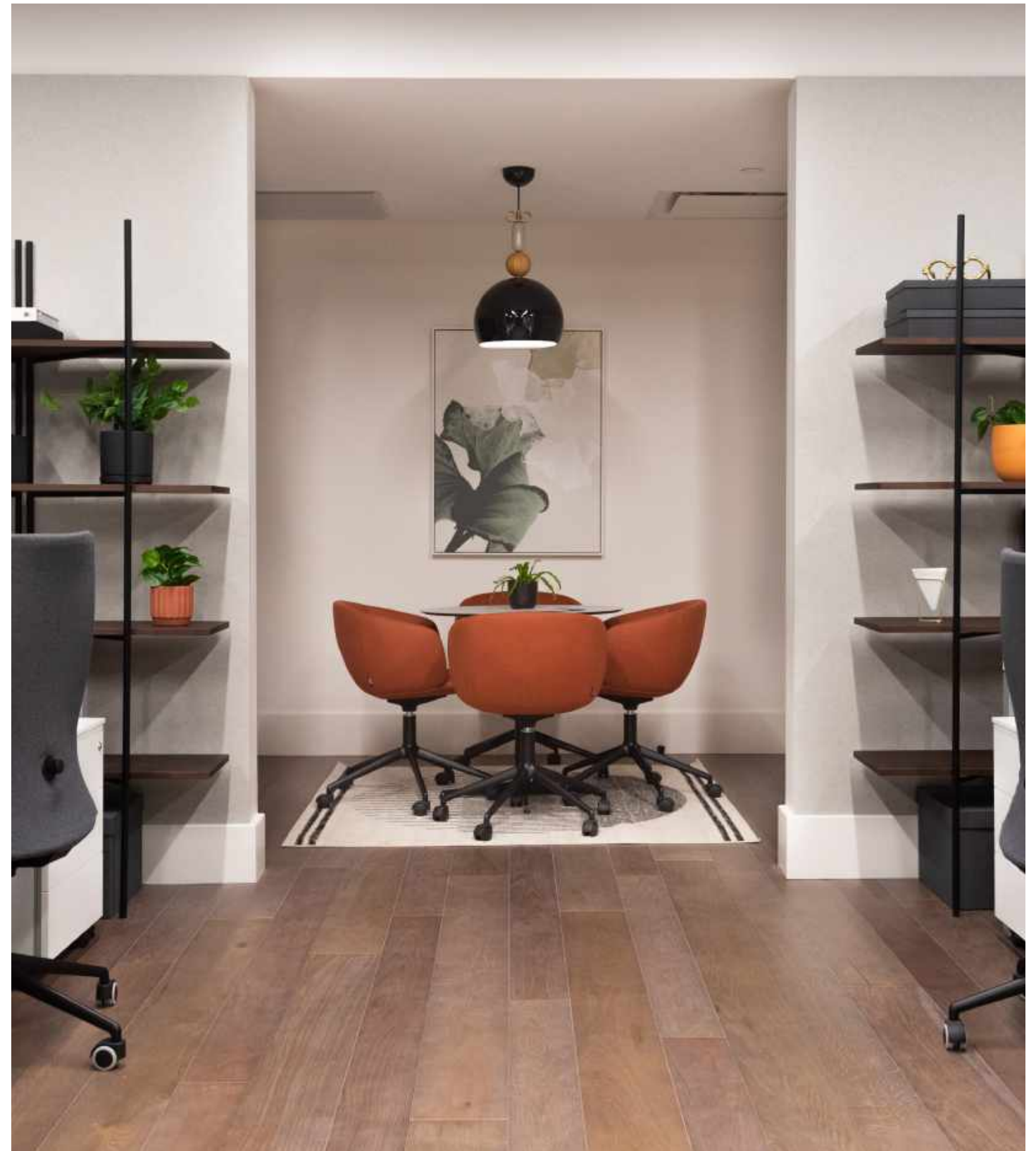
DEVELOPER & DESIGN CONCEPT
Chevron Partners
GENERAL CONTRACTOR
Lazare Builders
PROJECT ARCHITECT
DJSA Architecture
MATERIAL SOURCING
Adige Design



Lobby wall structure and flooring by Venetian Gold, and iron scroll railing by Il Fabbro di Omero Bertacco, sourced exclusively through Adige Design.



Office furniture by True Design, French oak wood flooring by Itlas Pavimenti, and glass partitions by Paretimilano, all sourced exclusively thorough Adige Design.





Hand-carved gas fireplace mantel by Venetian Gold, and furniture by Olivieri Mobili and True Design, sourced exclusively through Adige Design.





Kitchen cabinetry by Armonia Group, marble counters by Venetian Gold, and furniture by Alberta Pacific Furniture, all exclusively sourced through Adige Design.



Closet composition by Oliveri Mobili, sourced through Adige Design.











Reception area with graphite marble install by Venetian Gold, French oak wood flooring by Itlas Pavimenti, and glass partitions by Paretimilano, sourced exclusively through Adige Design.





LAZAREBUILDERS.COM

© LAZARE BUILDERS LLC