

HOW TO MEASURE YOUR SPACE

This guide was created with our virtual and 'design only' clients in mind. Learn how to measure your space for effective results

SKETCH THE ROOM

Roughly sketch your room noting where the windows, doors, and fixed furniture pieces are located. This does not need to be pretty or to scale, the measurements just need to be accurate.

GET YOUR TAPE MEASURE

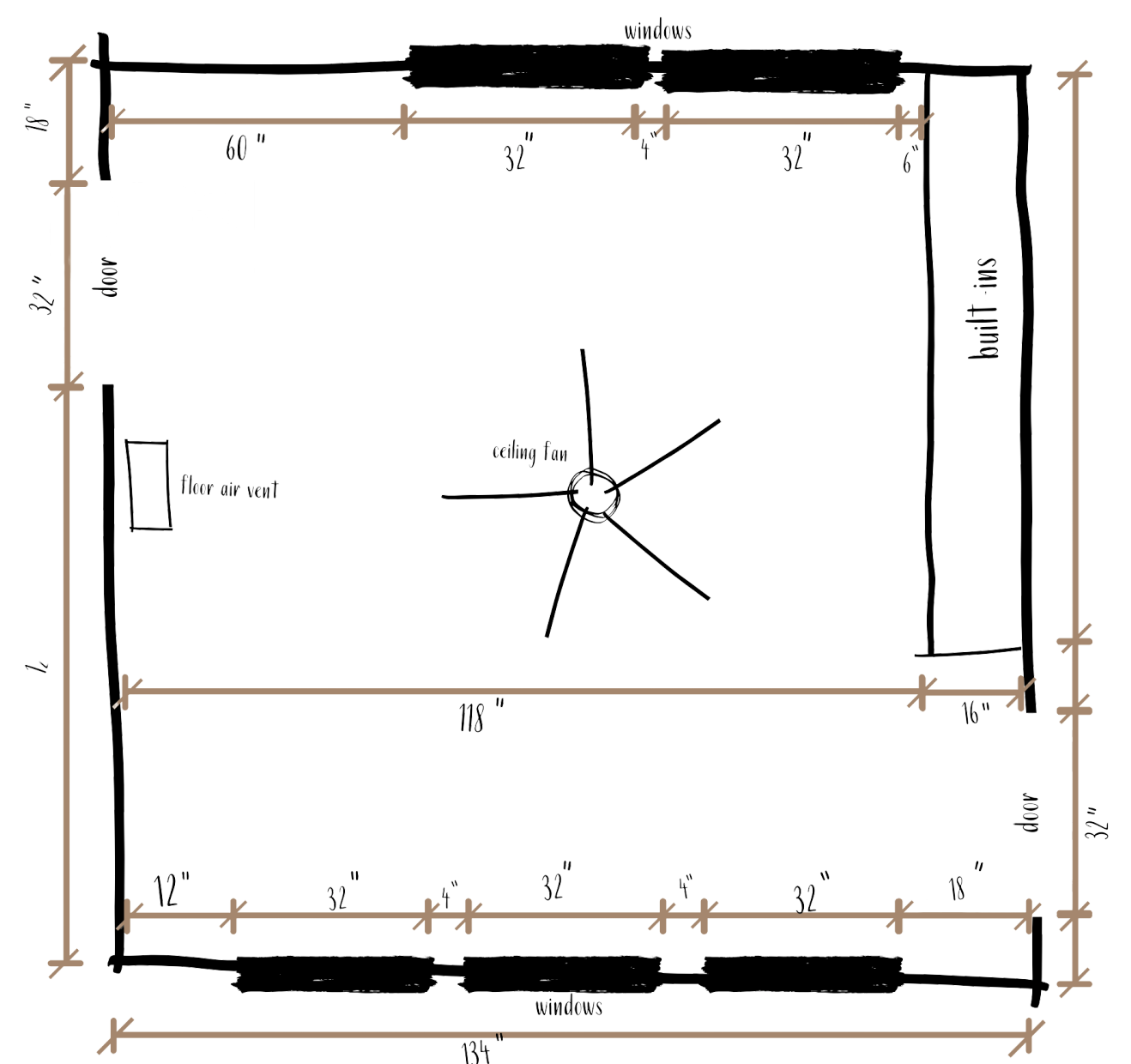
The longer the tape measure, the better. Ideally, 25' is the minimum yours should go so you can measure a whole room easily.

WALLS, WINDOWS, & DOORS

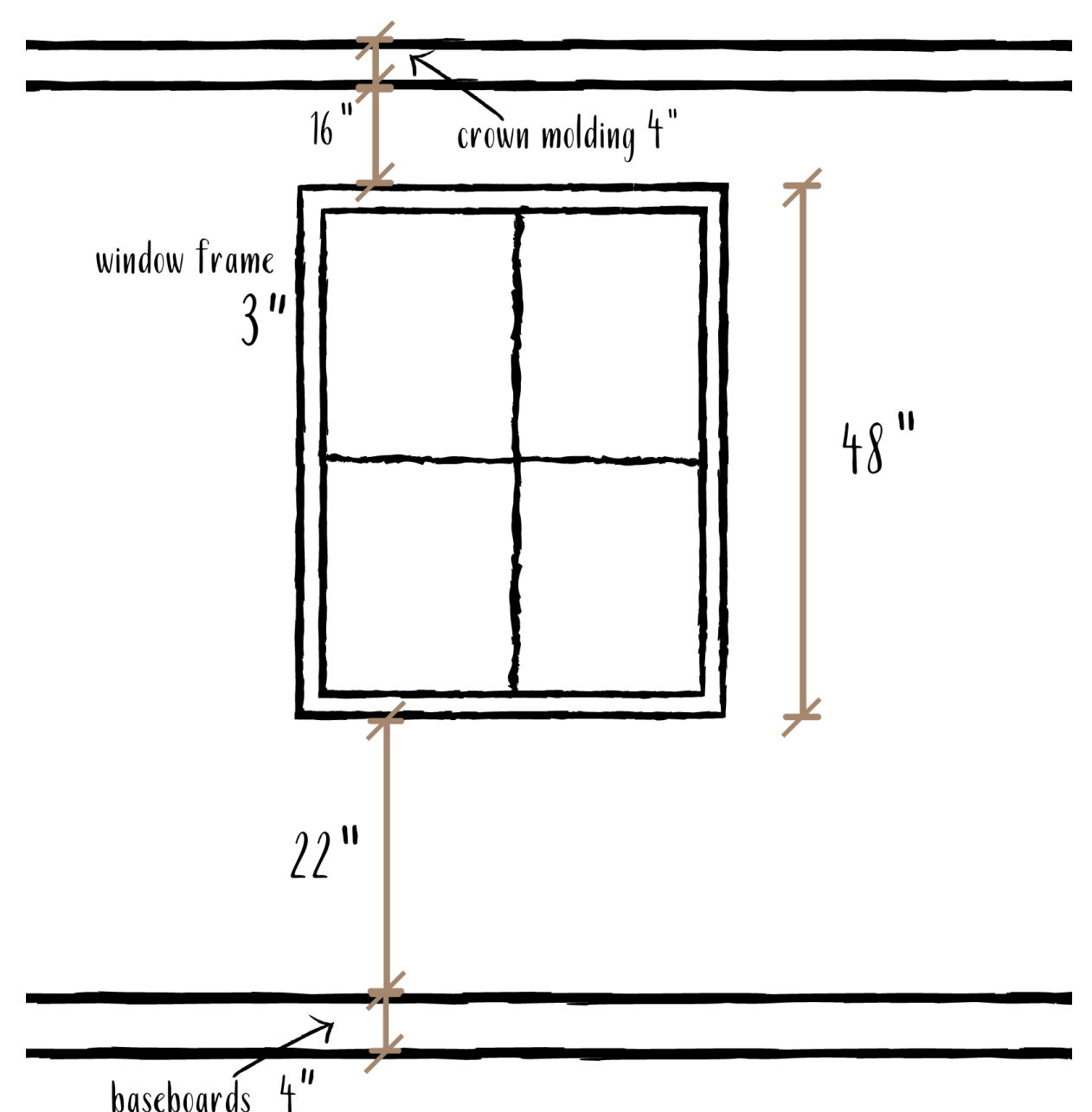
First, measure the general length and width of the room with the walls. Then measure doors, windows, and anything built-in. These dimensions should include their distance from the floor and ceiling.

DETAILS

Measure and note locations of, and distance between, outlets, light switches, thermostats, air vents/returns, baseboards, crown molding, light fixtures, etc.



SAMPLE ROOM SKETCH



SAMPLE WALL SKETCH

DAHR

INTERIOR

DELIVERY MEASURING GUIDE

DOORWAYS

Measure the **A** width and **B** height inside your door frame and stair landing.

If the door does not open wide enough, it may need to be removed from its hinges prior to delivery.

STAIRWELLS

Don't forget to take handrails and posts into consideration when measuring. **C**

Measure the landing if you have to pivot a large piece of furniture. **D**

HALLWAYS

Check for **E** low-hanging light fixtures or architectural details that can impede your delivery.

ELEVATOR

For apartments or condominiums measure the elevator doorway and interior

FURNITURE

Measure the Length, Depth, and Height of your furniture piece to ensure it fits all the areas it needs to pass through to be delivered.

