



2024

CLIENT QUESTIONNAIRE

I am here to make your design and decorating experience easy and as quick as possible

Answer the following with as much information as possible

- What design style(s) do you prefer?

- What design style(s) do you absolutely dislike?

- What colors do you like or dislike?

- What patterns, if any, do you like?

- Do you have any inspirational images you can share?

- What does your family normally do in this room (i.e., what is the intended use of this room)?

Q & A

- Are there any furniture or decor items you absolutely want to keep?
- What do you dislike about the current design?
- Do you or your family have any special needs?
- What are some of your hobbies/passions (e.g. traveling, reading, painting, cooking, etc.)?
- What is your budget?
- Do you want the space to embody a particular feeling or emotion? (calm, energizing, inviting, romantic, etc.)
- If you had to pick just one, what is the one goal you would like this design to achieve? (Ex: light & airy space, more efficient layout, more inspiring place to work, eat, live, etc.)

WORD ASSOCIATION

Choose all of the words that are most meaningful to you.

Choose as many as you want

winter

large gatherings

flowers

bright colors

formal / structured

traditional

leather

glaze

urban

clean lines

style

solids

eclectic

maximalist

summer

intimate gatherings

succulents

neutral colors

boho / casual

modern

texture

fabric

rural

familiar lines

substance

patterns

transitional

minimalist

COLOR ASSOCIATION

Choose up to 2 color schemes that best represent your color preferences

Earthy



Neutral



Colorful/Bold



Classic



Pastels



When choosing metals or hardware do you prefer gold, silver, black, mixed or antique brass?

 Gold

 Silvers

 Blacks

 Mixed metals

 Antique brass

DESIGN STYLE

Choose the design styles you like best. If you like a mix of styles, select the ones you like together.



TRANSITIONAL

If traditional design is too stuffy, but contemporary is too out of your comfort zone. The perfect mix of traditional elegance with contemporary lines and textiles. It mixes masculine and feminine.



TRADITIONAL

Most traditional homes have a very neutral color palette with pops of color brought in with oil paintings or floral arrangements. If you're not into 'matchy-matchy' traditional may not be your cup of tea. Above all, consistency is key so it's common to find matching furniture sets.



MODERN

Modern is the mix of Scandinavian, mid-century modern, and post-modern design. Furniture has clean lines with smooth, sleek surfaces. In particular metal, chrome, and glass are favored. Décor is kept minimal. This style uses art as the main décor. It's common to see bold colorful accents in art and furniture in a mostly neutral space.



DESIGN STYLE

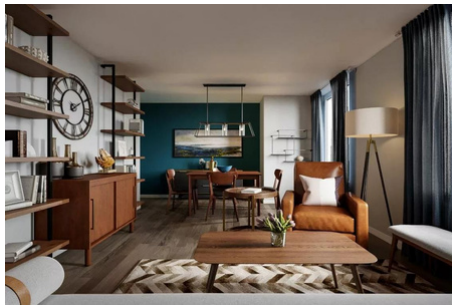
ECLECTIC

The ideal eclectic interior balances color and texture. As a result, it's the perfect blend of old and new.



MID-CENTURY MODERN

Rich and luxurious woods such as teak, rosewood, and walnut are regularly used. In addition, accents of different colors are used. Splayed legged furniture is common.



BOHEMIAN

Bohemian design is a free-spirited aesthetic that mixes different cultures and artistic expressions into an eclectic style that thinks outside the box. A laid back boho atmosphere places an emphasis on nature. However, it's common to find bold patterns and bright colors for furniture and accents. There are usually lots of greenery and plants.





I can't wait to get started!

send your finished questionnaire to
hello@4009decorates.com

I will get started on your design board with product suggestions and shopping links. If you have any questions please feel free to reach out any time!



www.4009decorates.com