



ENTITY SIDE DINING CHAIR

*PRODUCT SHOWN MAY NOT DEPICT STANDARD OFFERING

TECHNICAL DRAWINGS



DIMENSIONS

MEASUREMENTS ARE
APPROXIMATE

Overall Width: 21"

Overall Height: 34"

Overall Depth: 24"

Wood: Oak

Wood Finish Options: Ardesia, Bianco, Tortora Grigio, or Marrone

Metal Top Component: Powder Coated Steel Mesh and Frame

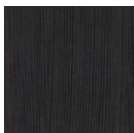
Metal Finish Options: Oil Rubbed Bronze or Gunmetal

COM @ 54" Plain: 2 yards

SW: 20"

SH: 19"

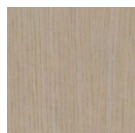
SD: 19"



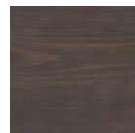
Ardesia



Bianco



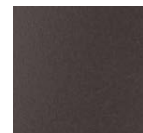
Tortora
Grigio



Marrone



Oil Rubbed
Bronze



Gunmetal