

SILICON VALLEY

FALL 2018

# DESIGN

THE MAGAZINE OF ASID CALIFORNIA PENINSULA | SILICON VALLEY CHAPTER OF ASID



AMERICAN  
SOCIETY OF  
INTERIOR  
DESIGNERS  
CALIFORNIA PENINSULA





**888-678-6789**

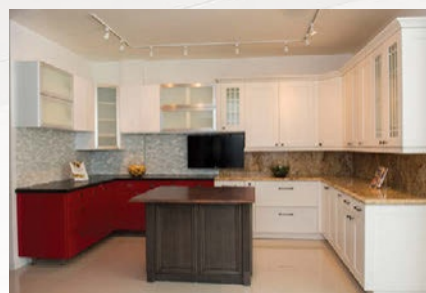
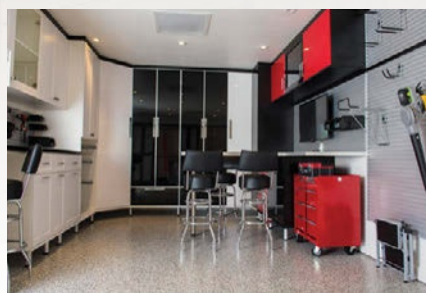
Call for free design consultation or visit us online at [closetfactory.com](http://closetfactory.com)

Visit our Showroom: 1000B Commercial Street, San Carlos, CA 94070

closets | garages | home offices | entertainment centers | wall units | wall beds  
pantries | craft rooms | laundry rooms | mud rooms | wine rooms



Photo by John Stillman



closet*f*actory  
the art of organization



**belmont**  
**HARDWARE**  
FINEST IN DECORATIVE HARDWARE & PLUMBING



**(650) 591-0345**

BELMONT | NOVATO | SAN JOSE | FRESNO | WALNUT CREEK | SAN FRANCISCO

See Us Online To Learn More  
[www.belmonthardware.com](http://www.belmonthardware.com)

**louis  
poulsen**

Extraordinary Lighting • Complete Showroom  
Top Manufacturers

**ILLUMINÉE**

LIGHTING • DESIGN • DECOR

402 Ingalls Street, Santa Cruz  
831-423-1121 • [www.illuminee.com](http://www.illuminee.com)

**Blinds | Shades | Shutters | Draperies | Motorization**



**HunterDouglas** *Gallery*

253 State St. | Los Altos CA 94022  
650.288.4377 | [www.rebarts.com](http://www.rebarts.com)

**Our Design Center Program Offers:**

- Knowledgeable and friendly staff and complete showroom available for your clients
- Sample books for loan at not charge ! Favorable trade pricing and discounts
- Valuable resources and precise solutions to meet each client's needs
- Full service for consultation, price quotes, ordering processing and installation

AMERICAN  
SOCIETY OF  
INTERIOR  
DESIGNERS  
CALIFORNIA PENINSULA  
**INDUSTRY  
PARTNER**



**ASID CA PENINSULA  
CHAPTER OFFICE**

1546 The Alameda, Suite 7195  
San Jose, CA 95126-5006  
408-906-9577  
administrator@capen.asid.org  
www.capen.asid.org

**ASID NATIONAL**

1152 15th St. NW, Suite 910  
Washington, DC 20005  
202-546-3480  
202-546-3240  
membership@asid.org  
www.asid.org

**CHAPTER EDITORIAL STAFF**

Maria Dolores Ayala, Allied ASID,  
Communications Director

Published by



ASSOCIATION SOLUTIONS  
5950 NW 1st Place  
Gainesville, FL 32607  
Tel: 352-332-1252  
Fax: 352-331-3525  
www.naylor.com

**Publisher:** Kim Davies

**Editor:** Monica Elliott

**Project Manager:**

Angela McDougall

**Marketing:** Nancy Taylor

**Advertising Sales Leader:**

April Hawkes

**Account Representatives:**

Adam Firestone, Cherie Dubay,  
Chris Zabel, Christian Naja,  
Curt Walker, Krystle Tribble,  
Sacha Balasubramaniam,  
Scott Pauquette, Stephen Cofino,  
Traci Clemente

**Project Coordinator:** Alana Place

**Layout & Design:** Madhu Rai

©2018 Naylor, LLC. All rights reserved.  
The contents of this publication may not be  
reproduced by any means, in whole or in part,  
without the prior written consent of the publisher.

PUBLISHED SEPTEMBER 2018/PED-Q0318 /6983

ON THE COVER: 2017 Silver Award Winner  
Residential B Kitchen. Ratna Khilnani,  
Allied ASID, Antarya Design;  
Photography by Mitchell Shenker

FALL 2018

# CONTENTS

## FEATURES

8  
Making space for  
what matters

12  
Custom closet design

14  
Five fresh laundry  
room solutions



## DEPARTMENTS

7  
President's Letter

15  
Industry News:  
A designer's cool co-op

16  
Chapter News: Design  
Excellence Award winners

18  
Chapter Sponsors

19  
Index to Advertisers



# The Rug Finder

## LOOKING FOR THE RIGHT RUG?

Let **The Rug Finder** find it for you. For over 15 years interior designers have had the confidence in us providing them the perfect rug for their projects. We are passionate about what we do and we look forward to providing you excellent service.



The Rug Finder

ALSO AVAILABLE:

**RUG CLEANING, REPAIR &  
RESTORATION AND PADDING**

[www.TheRugFinder.com](http://www.TheRugFinder.com) • (408) 464-3119

**WE DO  
CUSTOM RUGS**

Find us on: [f](#) [t](#) [i](#) [G+](#)



Dear members,

I would like to take this opportunity to thank the previous board of directors (2017-2018), the committee chairs and the committee members for their dedication and hard work, for going above and beyond and for making a challenging year a success. It is an honor to serve as your new president.

We are a chapter with a wonderful and supportive group of sponsors and industry partners, and without your support we would not be able to provide the educational and networking events that are so crucial to the success of our chapter. We appreciate your commitment, and I sincerely thank you for your continued support.

I am excited to begin the 2018-2019 fiscal year, and I am looking forward to reconnecting with and meeting every one of you.

As your new president, I have the privilege of working with a supportive board of directors and committee chairs. Together, we have begun planning relevant, fun and educational programs and events. We hope to engage our membership and promote the profession of interior design. We are looking forward to your continued participation. This year, we will also welcome our new administrator. Our focus and effort will be to further strengthen our chapter's organization.

Our board is committed to supporting our students and providing an environment where you can learn and advance, network with each other and future employers, and promote and support the value that ASID can and will bring to your career.

I believe the strength of any organization is in its members and their commitment. There is strength in belonging to a professional organization where you can form relationships, share accomplishments, network with those who share common goals and objectives, and, in the process, make your profession, community and industry stronger. I encourage you to get involved, volunteer and support your chapter.

I am looking forward to a productive year and invite everyone to participate and, most importantly, get involved.

Sincerely,  
Anna Sarkissian, Allied ASID, CID  
President 2018-2019



**ASID CALIFORNIA PENINSULA/  
SILICON VALLEY**

1346 The Alameda, Suite 7-195  
San Jose, CA 95126-5006  
408-906-9577

administrator@capen.asid.org  
www.capen.asid.org

**BOARD OF DIRECTORS**



President  
Anna Sarkissian, Allied ASID, CID  
president@capen.asid.org



President-Elect  
Janet Tosi Marena, ASID  
president-elect@capen.asid.org



Financial Director  
Taryne Meyer, Allied ASID  
finance@capen.asid.org



Communications Director  
Maria Dolores Ayala, Allied ASID  
communications@capen.asid.org



Professional Development Director  
Lucile Glessner, Allied ASID,  
LEED AP+C  
professionaldevelopment@  
capen.asid.org



Membership Director  
John Hamilton  
membership@capen.asid.org



At-Large Director, IP Liaison  
Mamuka Grigolia, Industry  
Partner ASID  
at-large@capen.asid.org



Student Representative  
Amy Fregosi, Student ASID  
studentrep@capen.asid.org



Student Affairs Committee Chair  
Nancy Lanthier, Student ASID  
the5lanthiers@gmail.com

# Making Space



# for What Matters



By Melinda Mandell, ASID

Pushing back the clutter is a daily battle in my house. I often wish I had an empty drawer to whisk that ugly pile into as friends dropped by on a Sunday afternoon. Here are four things to think about when searching for meaning in your clutter-filled home.

## Functional furniture

Use furniture that works for your needs rather than what you think should be in that space. Don't be afraid to break the rules. Need drawers instead of doors? Go for it!

In order to provide more storage for one family of passionate readers and writers, I placed an enclosed minimal bookcase in the dining room. It's stunning, and for all anyone would know, it contains serving dishes!

I'm a fan of packing as much storage into interiors as possible. But I also appreciate flexibility and an open, lightweight look. So often, instead of big, built-in solutions, I assemble collections of furniture that meet storage needs without feeling bulky. Think free-standing cabinets with tall legs flanking the living room fireplace to house a collection of cherished family photo albums.

I also want to take a moment to rant about console tables. There have so many beautiful designs, but with nearly all of them, I want to scream, "Put a drawer on it!" As far as I can see, there

# Natural Selection

Stone  
Porcelain  
Ceramic  
Mosaic  
Glass  
Quartz  
Metal

Image courtesy of Artistic Tile

All Natural Stone has the finest selection of tile and stone in the Bay Area. Our four locations are a virtual gallery of the most exclusive and beautiful product lines—many that can only be found here. We also have professional sales associates that can help you design and select the right products for your space. Step into one of our showrooms today and be amazed.



San Jose • Burlingame • Dublin • Berkeley • [allnaturalstone.com](http://allnaturalstone.com)

**All Natural Stone**  
GRANITE & FINE TILE

ARTISTIC TILE

A-K-D-O

COUNTRY FLOORS

NEW RAVENNA  
MOSAICS

LUNADA  
BAY TILE

## “Don’t be afraid of working with what you have.”

is no good reason not to have a drawer and a shelf on a console table — someplace to stash a bag, a pair of shoes, the spare keys or the doggie bags.

### Work with what you have

Don’t be afraid of working with what you have. If you have extra space in your laundry room and not enough in your pantry, use that space for pantry items. However, this is not permission to be haphazard in your storage habits. Keep like things with like things.

Though we are moving toward being a paperless society, we are not quite there yet. One good tip I heard from an organization-fairy-godmother and love to practice is to sort the mail as it comes into the house. Unnecessary items are tossed into the recycle bin, and the mail is placed in a tray to take further action with later. It helps so much to prevent clutter by deciding right at the door what you will allow into your home.

### Starting fresh

When designing a remodel or new build, we as designers are positioned perfectly to help our clients (or ourselves) optimize daily flow, both customizing spaces and maximizing organization.

When designing kitchens, I take inventory of what types of tools, appliances and supplies my clients have, and then design their kitchen to have high-frequency-use items close at hand and low-frequency-use items further away from the main work area. Knife collection? Have a drawer for that! Paper towels in bulk? Have a cabinet for that! Sparkling water obsession? Have a shelf for that!

One client wanted a dedicated space for their sacred morning coffee ritual. The solution took advantage of an enclosed stairwell



protruding inconveniently into the kitchen. The depth of the stairwell is now hidden by the kitchen’s new “coffee center” and pull-out pantry nestled perfectly behind. The client gained a hallowed space for coffee in the morning, extra accessible storage and maximum square feet in their new kitchen.

### Call in a professional

As professionals, we know and preach the value of bringing in experts. We know when we need to bring in an architect, a surveyor or a Title 24 consultant. Personally and professionally, I have benefitted from professional organization services. We want our community to value us as experts, so let’s practice what we preach. Let’s call in the dedicated closet designers, the qualified garage outfitters and the professional organizers.

What I strive for in my interior design practice, and in my own home, is to create spaces that support a meaningful life. Each space must be thoughtfully considered, planned and optimized with beautiful silhouettes, useful storage, organizational tools and negative (empty) space.

Designing our homes well gives us space in our lives to do more of the things that are meaningful to us. ■



Melinda Mandell

*Melinda Mandell is the owner of Melinda Mandell Interior Design in Palo Alto, California.*

# Custom closet design



By Karin Parodi,  
Allied ASID



Everyday my clients walk into their closets with a mission: Emerge fully dressed, shoes in hand, ready to face the day. What I hear after we build them a custom closet is, “I love getting dressed,” “You completely eliminated a huge marital pain point,” and even “You changed my life!”

How can a closet make such a difference? Until you experience it, it’s hard to truly understand.

My job is to create an organized and efficient system for storing and accessing every item of clothing and accessory in a way that functions well for both spouses individually and together. When it comes to children, this goal is even more essential. It had better be easy or it ends up on the floor!

## Inventory

The first step to any design is to inventory what they own, particularly for a closet or garage. How many pairs of shoes does she really have? Don’t estimate from memory; actually count them. How many ties does he have? Since rolling and folding ruins the shape of ties, these must be hung.

## Overview

As we inventory their belongings, a discussion of flow is important, too. Grouping like items together by size will take advantage of every inch and makes things easy to see and, therefore, easy to find. The goal is to minimize wasted space and maximize utility. This is where we discuss their flow as they get ready on a typical



morning. And if at all possible, a “separation of church and state” is essential. Each spouse having his or her own side will make for a more peaceful marriage. But don’t think it’ll be 50-50. One spouse’s side will typically be larger — usually hers.

### Layout and prioritize

Now it’s time to plan the details. We have assessed their belongings, and we know the space we have to work with. Now the goal is to minimize wasted space and maximize utility, without sacrificing style. I start with the items that must go in the closet: hanging clothes and shoes, then folded clothing like sweaters, shirts and pants. Once those items are accommodated, it’s time to fit drawers for underclothes, dirty laundry accommodations, jewelry, luggage, seating, mirrors and display.

### Materials and finishes

What the closet actually looks like — material and finishes — can come at any point in the design process. But it doesn’t matter if the closet is a simple white laminate or a solid wood custom stain with integrated lighting and glass doors, the process and storage solution is the same. For the best outcome every time, it always starts with what we are storing.

I love designing the perfect space for my clients. No two walk-in closets should be exactly alike because your wardrobe isn’t exactly like anyone else’s. Designing a custom closet reflects the lifestyle, habits and personal style of the person using the space. ■

*Karin Parodi is senior designer for Valet Custom Cabinets and Closets.*

# Five fresh laundry room solutions



ALL PHOTO COURTESY R. BRAD KNIPSTEIN PHOTOGRAPHY



By Lisa Staprans, Allied ASID

The laundry room is often prone to collecting clutter that can quickly become an eyesore. Fortunately, there are many smart storage and organization ideas that can transform the room into an effective space. The key is to allow plenty of storage options and keep the space aesthetically pleasing to keep it organized.

Here are five design solutions that are well worth the effort.

- 1 Consider a stackable washer-and-dryer unit to save valuable floor space. House the unit in a built-in cabinet that includes a shelf between units, which can be pulled out for folding items fresh from the dryer. This folding board can easily slide out of sight when not in use.
- 2 Add a few hanging rods staggered above the laundry sink to turn the overhead space into a drip-dry zone. These bars can also be helpful when ironing or hang-pressing clothes.
- 3 Install adjustable shelves that are positioned to fit the cabinet's contents, with little wasted space in between.
- 4 Add some pull-out drawers or baskets inside the cabinets to store supplies.
- 5 Create pull-out drying racks for delicate clothes by installing lightweight boards with waterproof mesh that slide out of base cabinets. ■

*Lisa Staprans is the owner of Staprans Design.*

# A designer's cool co-op

**W**hat happens when you put together six of the most sizzling interior designers of Silicon Valley?

A unique phenomenon called Mendelsohn Place Interior Design Studio.

It has been one of the South Bay's most guarded secrets for the past 20 years, and for good reason. Located in downtown Saratoga, California, this shared workspace fosters a creative community that feeds on each other for cross-pollination trendy ideas and styles.

At the moment, you can find six top-notch gals as well as an office manager. Barbara D'Ercole, Lucile Glessner, Anne Johnson, Alison Whittaker, Severing Secret and Sofieya Zsudara are the principals and owners of their respective interior design firms.

And while sometimes there is competition over a new client, for the most part, the camaraderie between them overshadows anything else.

These top designers gather once a month to discuss needs and issues, and they have trade representatives come and present to them. They also go on design trips together: Modernism week in Palm Springs, Dwell on Design in Los Angeles and architectural tours in the Valley. And during holidays, they organize dinners for the whole office.

The space has a well-stocked and organized resource library, a large conference room, a small kitchen, multiple printers and office supplies. For a monthly fee, Mendelsohn Place also allows additional resource renters to use the library and the large conference room on an appointment basis. If you are interested in becoming a resource renter, please contact [mendelsohnplace@gmail.com](mailto:mendelsohnplace@gmail.com).

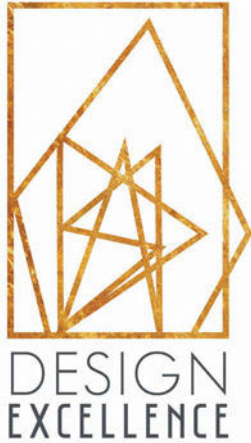
In the highly competitive architecture and design industry, Mendelsohn Place is a breath of fresh air that proves that cooperation trumps competition! You really need to see it to believe it. Learn more about the studio at [www.mendelsohnplace.com](http://www.mendelsohnplace.com). ■



Holiday dinner with the whole Mendelsohn Place crew

Mendelsohn Place building





# 2018 Design Award

## PLATINUM

### **Pamela Pennington, ASID**

Pamela Pennington Studios  
Residential Contemporary Singular Space

## GOLD

### **Jorie Clark, Allied ASID**

Jorie Clark Design  
Residential Contemporary SFR over 3,000 SF

### **Lucile Glessner, Allied ASID**

Lucile Glessner Design  
Residential Contemporary Kitchen

### **Risë Krag, Allied ASID**

**Nicole Chacon, Allied ASID**  
RKI Interior Design  
Residential Transitional SFR over 3,000 SF

### **Linda Sullivan, ASID**

Sullivan Design Studio  
Commercial Contemporary Healthcare

### **Linda Sullivan, ASID**

Sullivan Design Studio  
Commercial Contemporary Institutional

## SILVER

### **Penny Chin, ASID**

**Colette O'Brien, Allied ASID**  
Elements in Design  
Residential Transitional Kitchen

### **Risë Krag, Allied ASID**

RKI Interior Design  
Residential Transitional Singular Space

### **Alina Halloran, Allied ASID**

Alina Halloran Design  
Emerging Professional Residential Contemporary Kitchen

### **Alina Halloran, Allied ASID**

Alina Halloran Design  
Emerging Professional Residential Transitional SFR  
over 3,000 SF

### **Leslie Lamarre, Associate ASID**

TRG Architecture + Interior Design  
Residential Contemporary SFR over 3,000 SF

### **Pamela Pennington, ASID**

Pamela Pennington Studios  
Residential Contemporary Kitchen

### **Linda Sullivan, ASID**

Sullivan Design Studio  
Residential Transitional SFR over 3,000 SF

## BRONZE

### **Risë Krag, Allied ASID**

### **Nicole Chacon, Allied ASID**

RKI Interior Design  
Residential Transitional Kitchen

### **Lucile Glessner, Allied ASID**

### **Eve-Marie Olimpo, Allied ASID**

Lucile Glessner Design  
Residential Contemporary SFR under 3,000 SF

### **Jana Magginietti, Allied ASID**

Jana Magginietti Interior Design  
Residential Transitional SFR over 3,000 SF

### **Pamela Pennington, ASID**

Pamela Pennington Studios  
Residential Contemporary SFR over 3,000 SF

### **Lisa Staprans, Allied ASID**

Staprans Design  
Residential Contemporary Bathroom

# Excellence winners



Gala and Auction Chair Jim Heintz (second from right) with his team: Jessica Ross (from left), Chapter President Patty McDonald, Sue Ross, Chris Nobriga, Competition Chair Lilley Yee, Marianne Bauer, Susan Hoffman, Jackie Bartlett, Cita Rojas-Sila, Mamuka Grigolia, Competition Chair Jeanette Loretz, Heintz and John Hamilton

## Students

### **GOLD**

**Chris Nobriga**

Student Commercial Project Contemporary Bathroom

### **SILVER**

**Chris Nobriga**

Student Commercial Project Contemporary Kitchen

**Sue Ross**

Student Residential Project Contemporary Singular Space

**Sue Ross**

**Jill Vanni and Justeen Tomlinson**

Student Commercial Project Traditional Institutional

### **BRONZE**

**John Hamilton**

Student Residential Traditional Singular Space

San Francisco: 415-550-8848

Mountain View: 650-691-6850

San Mateo: 650-340-2890

San Rafael: 415-455-5363



Gilman's Kitchens and Baths is an award winning, family owned, full Design + Build company with 4 showrooms in the Bay Area. Gilman's is proud to have been serving the Bay Area community for over 30+ years!

228 Bayshore Blvd, San Francisco 94124  
[www.gkandb.com](http://www.gkandb.com)

# Chapter Sponsors

## DIAMOND



PURCELL MURRAY

## PLATINUM

All Natural Stone  
GRANITE & FINE TILE

## GOLD

PORCELANOSA  
TILE · KITCHEN · BATH · HARDWOOD

UNIVERSITY ELECTRIC  
HOME APPLIANCE CENTER  
Family Owned & Operated Since 1919

DA VINCI  
MARBLE

MENLO  
FLOORING & DESIGN

COAST  
LIGHTING

## SILVER

  
Benjamin Moore®

  
SUB-ZERO  
COVE  
SHOWROOM

  
RIGGS  
SHOWROOM +  
DISTRIBUTING

ATS  
ARTISTIC TILE AND STONE

REBARTS  
INTERIORS

The Integrated Lifestyle  
The Future Of Home Technology

design mart  
SILICON VALLEY  
Furniture & Fabrics To Live There

## BRONZE

DECORATIVE  
DPS  
PLUMBING SUPPLY, INC.  
"Welcome Home"

  
Festa

GKB gilman's  
kitchens + baths

  
VALET  
CUSTOM  
CABINETS  
& CLOSETS

THE YARDSTICK  
Window Treatments  
WINDOW COVERING SPECIALIST

PENINSULA SILICON VALLEY  
AND MORGAN HILL

CUSTOM  
SHUTTERS

CUSTOM  
DRAPERIES

CUSTOM BLINDS  
& SHADES

MOTORIZATION  
EXPERT

Decades of  
Experience

Phone: 408.214.1300  
[www.theyardstick.com](http://www.theyardstick.com)



DECORATIVE  
DPS  
PLUMBING SUPPLY, INC.  
[www.decorativeplumbingsupply.com](http://www.decorativeplumbingsupply.com)

1200 Industrial Rd. #8  
San Carlos, CA 94070  
Ph. 650-592-3337  
Fax. 650-592-3350

THANK YOU  
to the advertisers  
who helped make this  
publication possible!

## Index to Advertisers

### APPLIANCES

University Electric Home Appliance  
Center..... Inside Back Cover  
[www.universityelectric.com](http://www.universityelectric.com)

### CLOSET DESIGN

Closet Factory..... Inside Front Cover, 3  
[closetfactory.com](http://closetfactory.com)

### CUSTOM CABINETRY

Closet Factory..... Inside Front Cover, 3  
[closetfactory.com](http://closetfactory.com)

### CUSTOM GLASS HANDRAILS

HeavyLux Shower Doors ..... Outside Back Cover  
[www.heavylux.com](http://www.heavylux.com)

### FRAMELESS SHOWER DOORS

HeavyLux Shower Doors ..... Outside Back Cover  
[www.heavylux.com](http://www.heavylux.com)

### FURNITURE/ENTERTAINMENT UNITS

Closet Factory..... Inside Front Cover, 3  
[closetfactory.com](http://closetfactory.com)

### HOME DESIGN

The Yardstick..... 18  
[www.theyardstick.com](http://www.theyardstick.com)

### KITCHEN, BATH & HARDWARE

Belmont Hardware..... 4  
[www.belmonthardware.com](http://www.belmonthardware.com)

### LIGHTING

Illuminee Lighting ..... 4  
[www.illuminee.com](http://www.illuminee.com)

### ORIENTAL CARPET & RUGS

The Rug Finder ..... 6  
[www.rugfinder.com](http://www.rugfinder.com)

### SUSTAINABLE/GREEN DESIGN

Illuminee Lighting ..... 4  
[www.illuminee.com](http://www.illuminee.com)

### WINDOW TREATMENTS

The Yardstick..... 18  
[www.theyardstick.com](http://www.theyardstick.com)

Appliances

Built-ins



Serving The Bay Area Since 1919

1500 Martin Ave., Santa Clara, CA 95050

800-681-0508 | [info@universityelectric.com](mailto:info@universityelectric.com) | [www.universityelectric.com](http://www.universityelectric.com)

**MENLO**  
FLOORING & DESIGN

## Menlo Flooring & Design proudly presents the Interior Designer Program

Over the past 20 years we have worked with interior designers from around the country to create the most visually stimulating, and aesthetically pleasing floors imaginable. And with all those years of experience in the industry, we've streamlined the entire process down to a fine art.

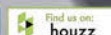
That's why we decided to create the **Interior Designer Program**, to provide our preferred partners with the highest level of flexibility for your project, and backed by our 20 years of experience.

### Benefits Include:

- ▶ IDP Partner Priority Showroom Access
- ▶ IDP Partner Exclusive Discounts
- ▶ IDP Partner Priority Delivery
- ▶ IDP Partner Priority Installation
- ▶ On-Request Product Specs & Pricing
- ▶ Any-Time Support



905 El Camino Real, Menlo Park, CA 94025 | [www.menloflooring.com](http://www.menloflooring.com) | (650) 384-6326



FRAMELESS  
SHOWER DOORS

# HEAVYLUX

HeavyLux | Innovation | Fabrication | Installation

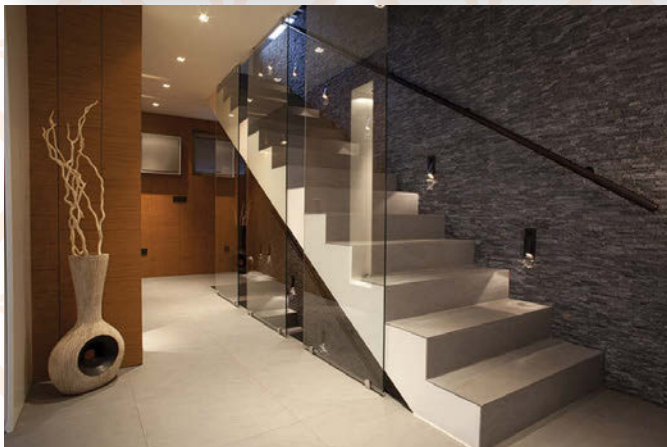


Heavylux, Inc. is a local Bay Area company built on its employees and their families as a team for over 20 years. We at Heavylux take great pride in our employees, our work and our customers.

Heavylux is the only Bay Area company to offer:

- Free on-site estimates
- Custom in-house fabrication
- Quick Lead Times
- Competitive Pricing
- LIFETIME WARRANTY

Call for a free estimate today!



Bay Area Showroom | 14077 Catalina Street. San Leandro, CA 94577  
[www.heavylux.com/](http://www.heavylux.com/) | Tel. 510.667.0781 | Fax. 510.667.0773



**SUPPORTING  
YOUR BUSINESS.  
INSPIRING  
YOUR CLIENTS.**

The Purcell Murray showroom provides a luxurious, no-pressure atmosphere in which you and your customers can experience the exquisite brands we represent. But it's more than a product showcase. Treat your clients to a true VIP experience, with live demos, concierge service and private meeting space to discuss your project.

To make an appointment or for product questions call 1-800-863-7133 or visit [purcellmurray.com](http://purcellmurray.com)

**SAN FRANCISCO  
DESIGN CENTER**  
235 KANSAS STREET  
SAN FRANCISCO, CA 94103

MONDAY - FRIDAY  
9AM TO 5PM AND  
SELECT SATURDAYS

 **PURCELLMURRAY**

