

20' HALF HEIGHT - REMOVABLE SIDE OFFSHORE BASKET

20' x 8' x 4'2"

Removable Side Door

Hot Dip Galvanized or Painted Finish



CERTIFICATIONS

DNV 2.7-1 (DNVGL-ST-E271) Standard for Offshore Containers

ISO 10855 International Standard for Offshore Containers and associated lifting sets

In support of IMO MSC Circ 860

CSC Convention for Safe Containers

API / Shell OPS0055 by request

Classification Society : Lloyd's Register or Det Norske Veritas (DNV)

DIMENSIONS (+/- 1/4")

	EXTERNAL	INTERNAL
Length	6058 mm 20'	5734 mm 18'-9 47/64"
Width	2438 mm 8'	2114 mm 6'-11 7/32"
Height	1280 mm 4'-2 25/64"	892 mm 2'-11 7/64"
Door Opening Width		4490 mm 14'-8 49/64"
Internal Cubic Capacity		10.8 M ³ 381 FT ³

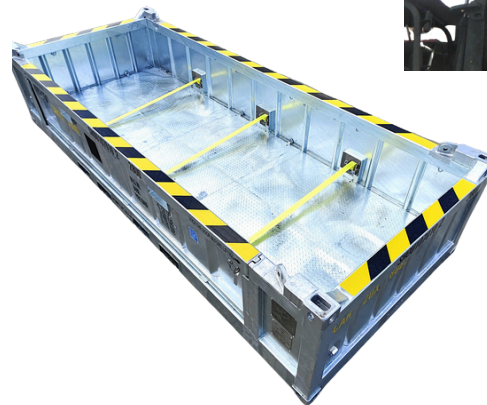
RATINGS (+/- 3%)

For Offshore / Sling Movement

Max Gross Weight	19,380 kg	42,720 lbs
Max Payload	15,750 kg	34,720 lbs
Tare Weight	3,630 kg	8,000 lbs

For Standard Cargo / Forklift Lift Movement

Max Gross Weight	19,380 kg	42,720 lbs
Max Payload	15,750 kg	34,720 lbs
Tare Weight	3,630 kg	8,000 lbs



INCLUDES

- DNV Certified Wire Rope Lifting Sling
- Full Data Book
- Original Certificates
- Electronic Mobilization Packet
- Delivery to your yard

