



BELLA GARDENS

EARLY LEARNING CENTER

Vision

To give underserved families equal access to high
quality childcare



A 501(c)(3) Organization



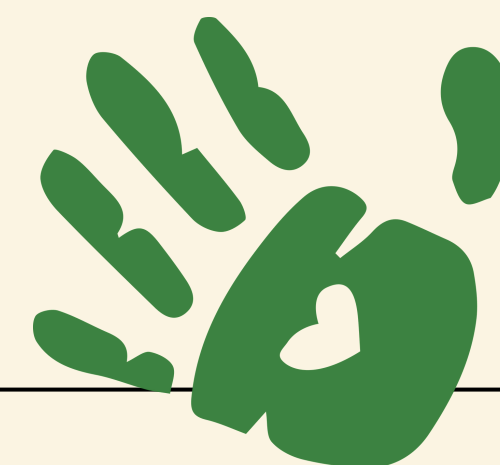
Hello, I'm Erika

Mother to a 4 and 6 year old

Working towards opening a preschool

After struggling to find affordable and consistent childcare near our home, I began homeschooling

I work part time as an assistant at White Rock Montessori



Experience

Early Childhood Care Experience:

- Three Years as a Toddler/Primary Assistant at White Rock Montessori
- Almost 10 years experience with infants through 6 years old

Recent Certificates:

- Home & Center Based Orientation from Child Care Licensing
- AMI Montessori 0-3 Orientation
- Positive Discipline in the Montessori Classroom

Program Participation:

- Wondergarten Summer Curriculum Test Group
- Callejo Botello Latino Leadership Academy
- Mujeres de Hacer Entrepreneurship program
- Wonderschool Academy on becoming licensed family childcare program
- Home Instruction for Parents of Preschool Youngsters (DISD)

Education:

SBEC certifications include: ESL Generalist (EC-4), Generalist (EC-6), Family and Consumer Sciences (6-12) and Human Development and Family Studies (8-12).

Erika holds a Masters of Humanities, with a concentration in Psychology, from the University of Dallas and a Bachelors of Interdisciplinary Studies, specializing in ESL from the University of North Texas.





Childcare in Texas

“early childhood development is much more than a child care issue. It’s much more than just a feminine issue. It is a labor issue. It is an economic development issue. And when business people comprehend this and embrace this concept, something good, productive, and sustainable will come.” Texas State Representative Angie Chen Button

The Problem- Access to childcare & pay

- 35% of workers who have or plan to quit their job cite childcare issues as a primary reason -[Source](#)
- TX has 333 zip codes represent childcare deserts, 48% of Texans -[Source](#)
- There is a 34% gap in labor force participation between men and women living with children under 5 -[Source](#)
- Lack of nontraditional care for service industry, healthcare, and airport employees
- Toddler Assistants make between \$29,000-\$40,000 a year

The Problem- Cost

- Federal government recommends child care costs 7% of a family’s income in order to be considered affordable -[Source](#)
- A family with one infant needs to make \$200,000 per year for child care costs to meet this recommendation (if childcare costs \$1,160). Texas’s median household income is \$57,000 and toddler care costs \$1,400+.
- Subsidized child care program offers financial assistance; this program only serves about 10% of eligible children -[Source](#)
- greater investment in quality child care- is the one policy which consistently increases women’s employment and closes the wage gap between men and women -[Source](#)

Some Solutions

- Legislation that supports early childcare initiatives
- Universal PreK that includes 18 months to 4 years old
- Infant/toddler care in businesses
- Mobile Care
- Infant/toddler care in schools
- Support for home based childcare

To give underserved families equal access to high quality early childcare

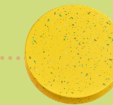


Vision





Essential Components:



Affordable

5% of family income

Small ratio

4:1 ration with no more
than 9 in a class

Diverse

Ethnically and
economically

Bilingual

Spanish & English

Outdoor play

Lots of it

Fair Pay

\$30/per hour





Mission Statement

We provide quality childcare to underserved families, thoughtfully designed to support child, family, and teacher well-being and advancement. Empowering through education, in an environment that promotes wonder, peace, and flourishing.

Overview

Services:

Bilingual Childcare- 2 to 5 year olds

Play & Nature Based Learning

Parent Workshops

Facilities:

Large classrooms

Indoor & Outdoor playground

Garden & Animal Care

Staff:

Fairly compensated, w/ benefits

Experienced

Bilingual- Spanish & English

Bella Gardens Curriculum



- Culinary Arts
- Agriculture
- Social Emotional Component
- Art, Crafts, & Handiwork
- Practical Life
- Outdoor Play

Our play-based curriculum is Montessori and Waldorf inspired, with a heavy emphasis on language and rich outdoor exploration. We emphasize play that promotes language, social development, and emotional regulation. Our classroom is a mixed age environment, with lower than standard ratios.

Bella Gardens is grounded in community, providing monthly parenting workshops to our families and workplace benefits to our teachers.



Traction

Building the Village w/ partners such as: United Way, Dallas Foundation, Wright Law, Financial Affairs, Hola Luz Creative Studio

Recognized 501(C)3 at the Federal and state level	Secured 2 classrooms at Owenwood Farm & Neighborhood Space	Copiloted Toddler Program at WRM. Served on its Strategic Planning & Grant Committee
Established home-based provider, ages 10 months to 10 years, w/ student waitlist	Started licensing process. Cleared Zoning & all four Inspections	Raised \$32,500 in funding (grants)



Timeline

Spring 2025- CO & Inspections

- Obtain Certificate of Operation
 - Code Complainece
 - Fire Inspection
- Acquire liability insurance
- Provide care for my children on a part-time basis
- Launch the marketing campaign
 - Website

Summer 2025- Set up environment

- Prepare for Licensing
 - Measurements
 - Health Inspections
- Recruit and Hire Teacher
- Set up classroom space 1 (Large)

Fall 2025- Begin Operation

- Begin tours and interviews
- Launch soft opeing- 3 day week, then add additional half day
- Recruit and Hire Teacher 2
- Increase enrollment



Target Market

Families living in childcare deserts in or near East Dallas

Families with children under the age of 4

Parents desiring Spanish exposure and outdoor play for their children

Families wanting alternative early education and support

Working parents- dual and single income



A preschool on a farm in East Dallas, providing affordable, quality childcare to underserved families. Our play based, bilingual educational program incorporates practical life, culinary arts, agriculture, art and a strong social/emotional component with rich outdoor play. We offer a mixed age environment with lower than standard student teacher ratios.

Erika Vargas Estrada

Founder & Director



Email:

erika@bellagardens.org

www.linkedin.com/in/evestrada