



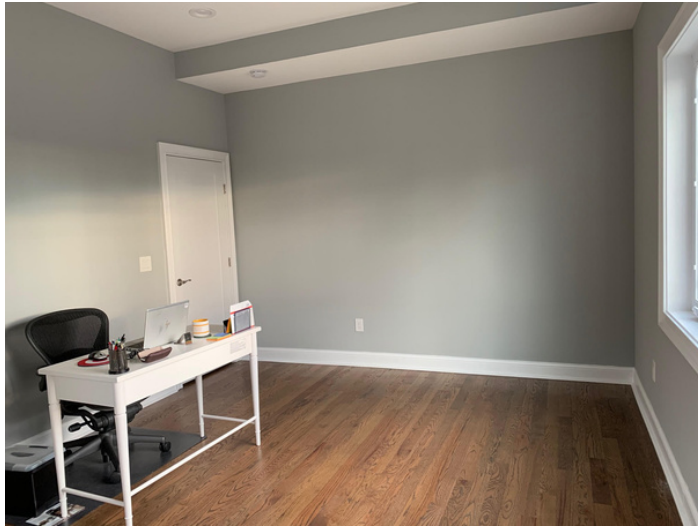
LARKIN | VIRTUAL INTERIOR DESIGN LIVING SPACES

Sample Signature Design Package

Designed by Tierney Larkin

The Goals

BEFORE:

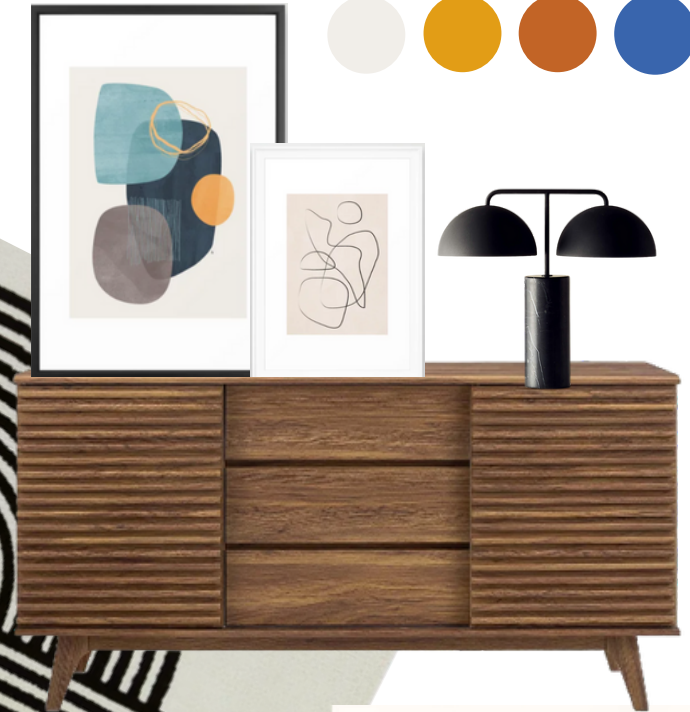


1. Recreate the old office in a minimal, Mid Century Modern Style
2. Required furniture will be a desk, chair, and some storage.
3. Office is used for client to work from home and hold Zoom meetings (so background is important)
4. The client loves Bobby Berk's personal office and would love to use this as inspiration
5. The client prefers artwork of an abstract style

Room Budget: \$10,000



The Inspiration

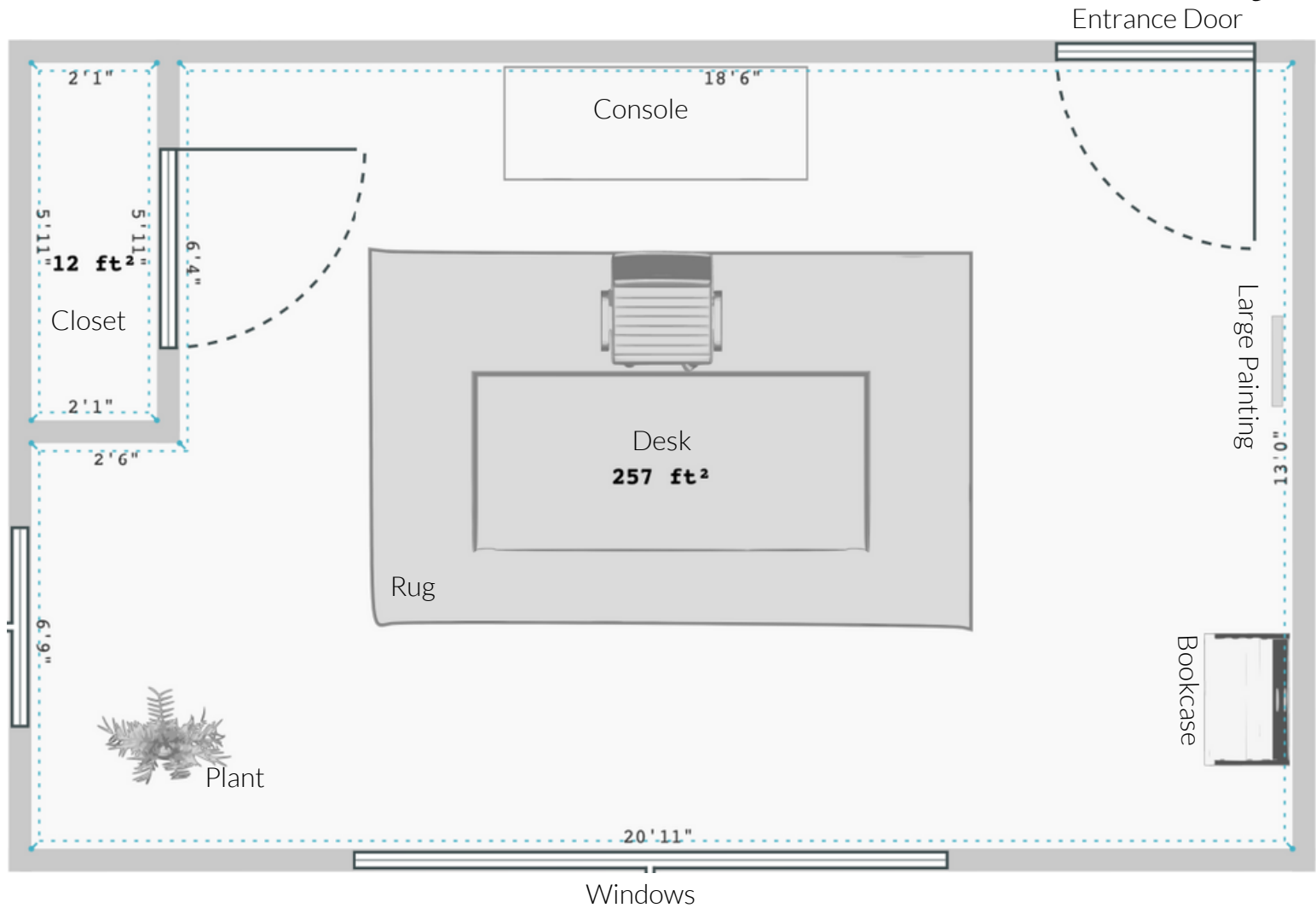


LARKIN
LIVING SPACES

BY TIERNEY LARKIN

VIRTUAL
INTERIOR
DESIGN

The Layout



LARKIN
LIVING SPACES

BY TIERNEY LARKIN

VIRTUAL
INTERIOR
DESIGN

The Details

1. West Elm Mid Century Bookshelf (small) - walnut
2. Society 6 Cyra Absstract Print -size large - black modern style frame
3. Society 6 Blude Nude Abstract Print - size large - black modern style frame
4. Rugs USA Brass lamp
5. CB2 Black two-dome lamp
6. Society 6 Abstract Print - size small - white modern frame
7. Society 6 Abstract Print - size small - black modern frame
8. Overstock Mid century console - walnut
9. Crate and Barrel Mid Century Desk - walnut
10. Wayfair - Faux Potted Plant - white
11. Laura Davidson Direct Wooden framed desk chair - black
12. Wayfair white and black area rug - size 7'10" x 10'

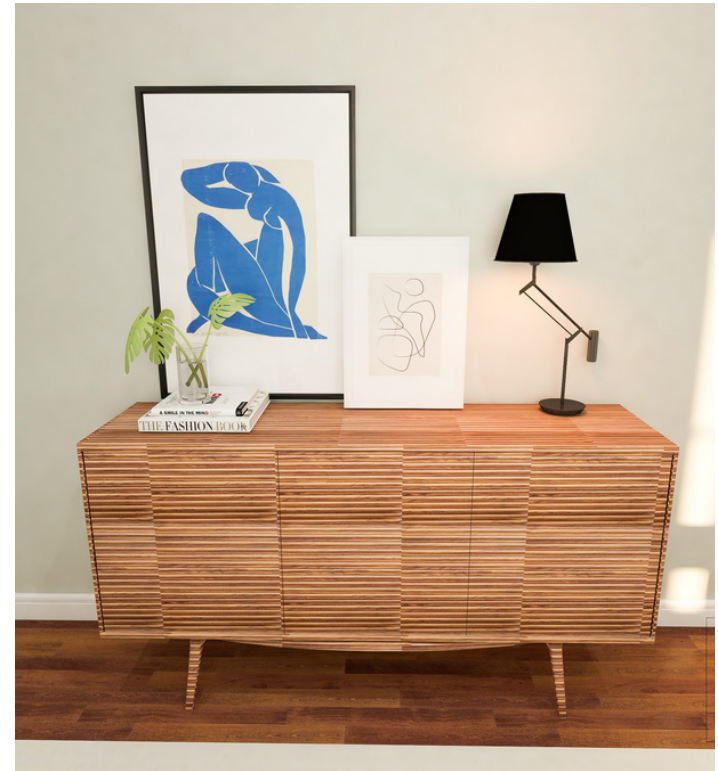


LARKIN
LIVING SPACES

BY TIERNEY LARKIN

VIRTUAL
INTERIOR
DESIGN

The 3D Renders



The 3D Walkthrough

Access your 3D walkthrough at the below link:

[CLICK HERE](#)

LARKIN
LIVING SPACES

BY TIERNEY LARKIN

VIRTUAL
INTERIOR
DESIGN

The Shopping List



Mid Century Bookshelf
\$799

[SHOP IT](#)



Cyra Print
\$179

[SHOP IT](#)



Blue Nude Print
\$148

[SHOP IT](#)



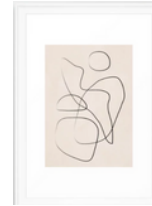
Gold Desk Lamp
\$49

[SHOP IT](#)



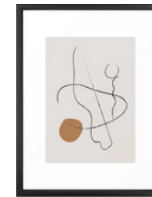
Black Dome Lamp
\$279

[SHOP IT](#)



Abstract Print
\$76

[SHOP IT](#)



Abstract Print
\$76

[SHOP IT](#)



Potted Faux Plant
\$299

[SHOP IT](#)



The Shopping List



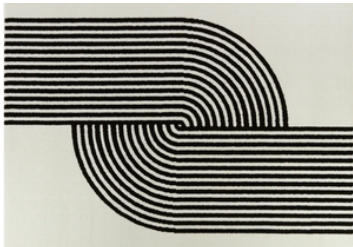
Mid Century Cabinet
\$498

[SHOP IT](#)



Walnut Desk
\$1,699

[SHOP IT](#)



B&W Rug 8x10
\$375

[SHOP IT](#)



Black and Wood Chair
\$345

[SHOP IT](#)

Room Budget: \$10,000
Selections Cost: \$6,545



The Instructions



The console is to be placed in the center of the back wall (door wall), behind the desk. The blue nude framed print, white-framed abstract print, and black dome lamp are to be style on top of the console as pictured above. The artwork is standing on top of the console and leaning against the wall, not hung on the wall.



The Large Cyra print is to be hung on the wall to the right of the door (facing the door), as shown in the 3D Renderings. Hang the painting so that the bottom of the painting is line with the top of the console table, so the paintings are at the same eye-level.



The mid-century bookshelf is to be placed in the front corner of the room, as shown in the 3D renderings. Style the shelves simply using the 3D renders as a guide, being sure to add a plant to the top shelf.

The Instructions



The black framed abstract print is to be placed on the wall to the right of the windows, centering the piece between the windows and the adjacent wall (single window wall). The plant is to be placed below and to the right of the painting, as shown above.



The rug is to be placed in the center of the room., but centering the longer side of the rug with the door wall, so that the rug and the console match up at their centers. The desk is to be placed at the center of the rug, chair behind the desk. The brass lamp stands at the corner of the desk. Place a small table top plant at the opposing corner of the desk.





LARKIN LIVING SPACES

VIRTUAL
INTERIOR
DESIGN

Designed by Tierney Larkin